



SYSTEMS WITH RELIABILITY, LP

Broadcast Antennas & Transmission Systems



[Home](#) [Products](#) [Services](#) [Tech Documents](#) [Quote Forms](#) [Contact Us](#) [Dealers](#) [About Us](#) [Site Map](#)

FMEC

[Scroll Down For Complete FMEC Data](#)



INCLUDES:

- Harness Cable
- Weatherproofing Kit
- UV Resistant Cable Ties
- Standard Mounting Bracket (fits up to 4" leg)
- Input Power Divider (systems with 3 or more bays)

FMEC SERIES

Circular Polarized Low Power FM Antenna

Frequency Range	88 - 108 MHz
Polarization	Circular
Power Rating	500 Watts (single bay)
Bay Input	Type N Female
VSWR	1.3:1 \pm 150 kHz

FEATURES:

- Built With Low Power Broadcasters in Mind
- Constructed of Heavy Wall Copper, Naval Brass, and PTFE Insulators. All Joints are Tig-Welded.
- Non-Pressurized, Cable Fed.
- Custom Directional Patterns and FCC Filing Documentation Available.
- Fiberglass Radomes or Electrical Deicers Available.
- 2 Year Limited Warranty on Defects and Workmanship to the Original Purchaser.



Standard FM

[BUY NOW](#)

Directional FM

[BUY NOW](#)

FMEC DATA

FULL WAVE SPACED ELECTRICAL AND MECHANICAL SPECIFICATIONS

Bays	Power Rating (watts)	Power Gain	dB Gain	Net. Weight (lbs)	Windload (lbs)
1	500	0.441	-3.556	15	35
2	1000	0.959	-0.182	35	85
3	1500	1.495	1.746	50	120
4	2000	2.044	3.105	65	155
5	2000	2.590	4.133	80	190
6	2000	3.160	4.997	95	225
8	2000	4.311	6.346	110	260
10	2000	5.456	7.369	130	295

Electrical & Mechanical Specifications Based On Mid-Band Operation (98.1MHz)

**HALF-WAVE SPACED
ELECTRICAL AND MECHANICAL SPECIFICATIONS**

Bays	Power Rating (watts)	Power Gain	dB Gain	Net. Weight (lbs)	Windload (lbs)
2	1000	0.695	-1.580	35	85
3	1500	1.012	0.052	50	120
4	2000	1.313	1.183	65	155
5	2000	1.623	2.103	80	190
6	2000	1.924	2.842	95	225
8	2000	2.528	4.028	110	260
10	2000	3.129	4.954	125	295

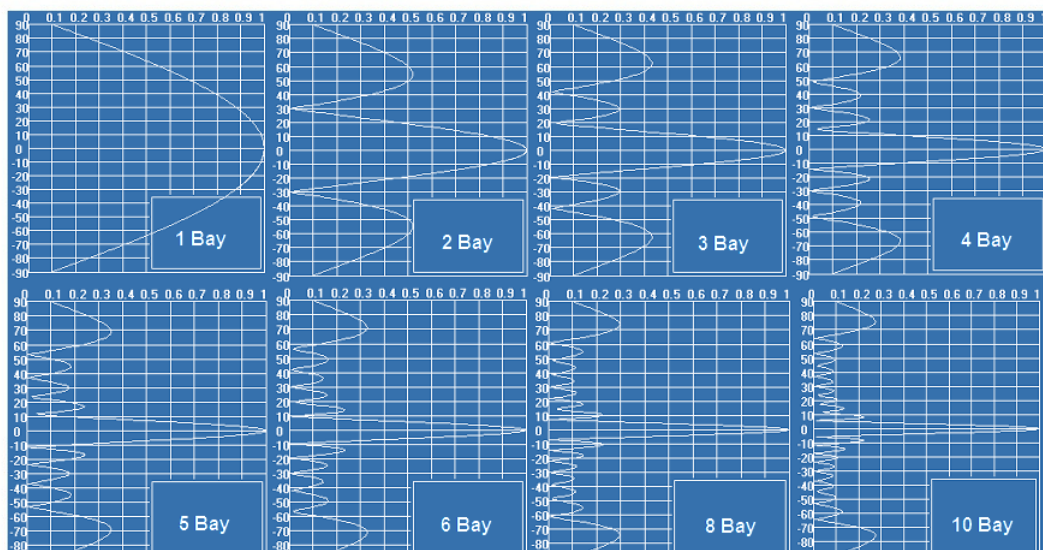
Electrical & Mechanical Specifications Based On Mid-Band Operation (98.1MHz)

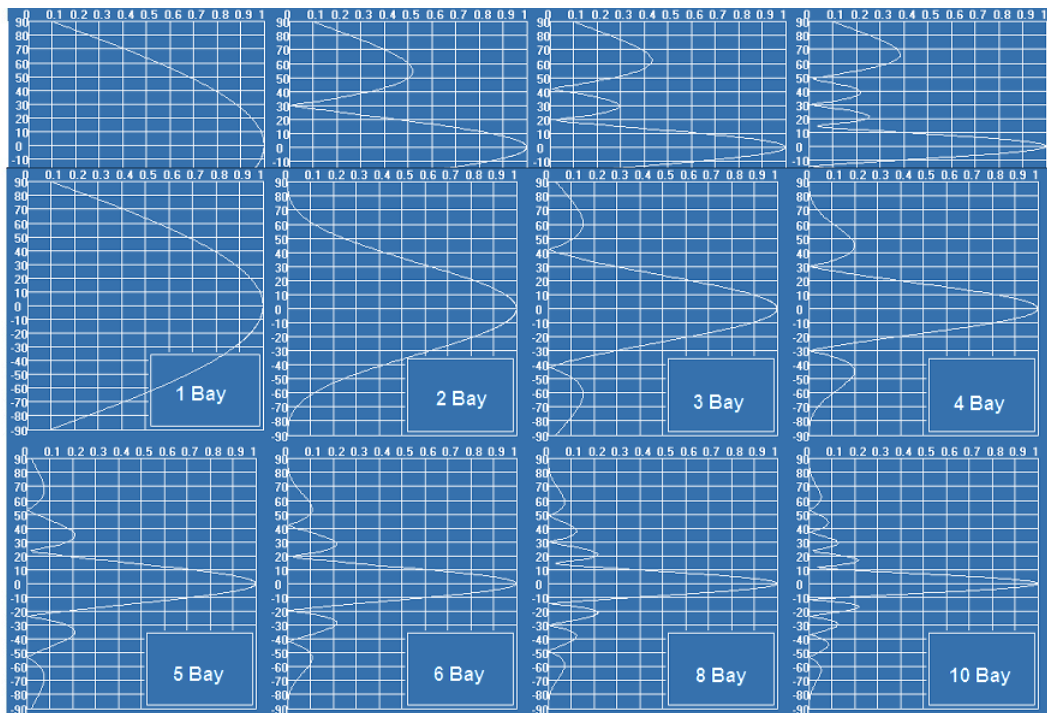
**3/4 WAVE SPACED
ELECTRICAL AND MECHANICAL SPECIFICATIONS**

Bays	Power Rating (watts)	Power Gain	dB Gain	Net. Weight (lbs)	Windload (lbs)
2	1000	.935	-0.292	35	85
3	1500	1.396	1.449	50	120
4	2000	1.845	2.660	65	155
5	2000	2.301	3.619	80	190
6	2000	2.756	4.403	95	225
8	2000	3.664	5.640	110	260
10	2000	4.590	6.618	125	295

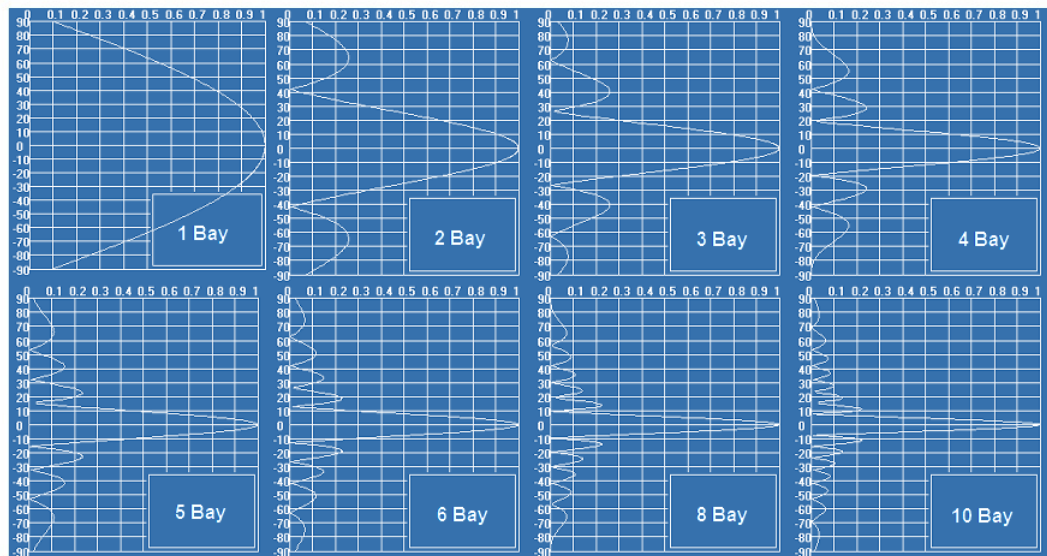
Electrical & Mechanical Specifications Based On Mid-Band Operation (98.1MHz)

**FULL WAVE SPACED
TYPICAL ELEVATION PATTERNS**



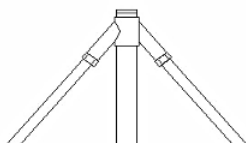


3/4 WAVE SPACED TYPICAL ELEVATION PATTERNS

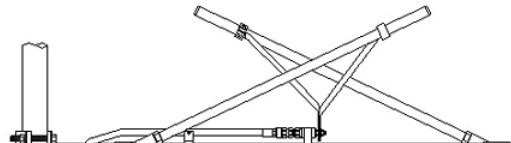


MOUNTING DETAIL

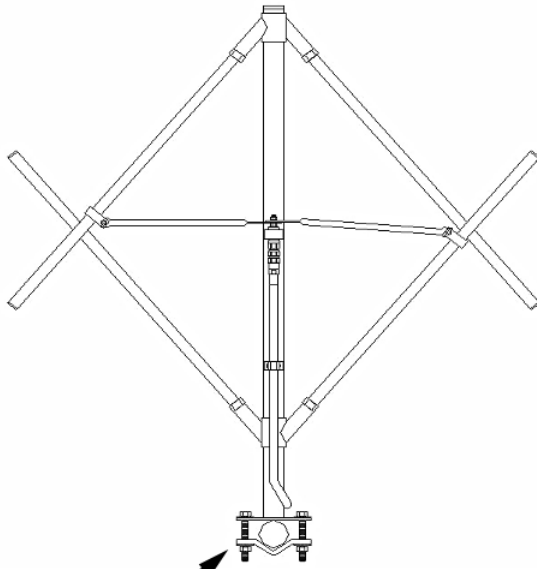
TOP VIEW



SIDE VIEW

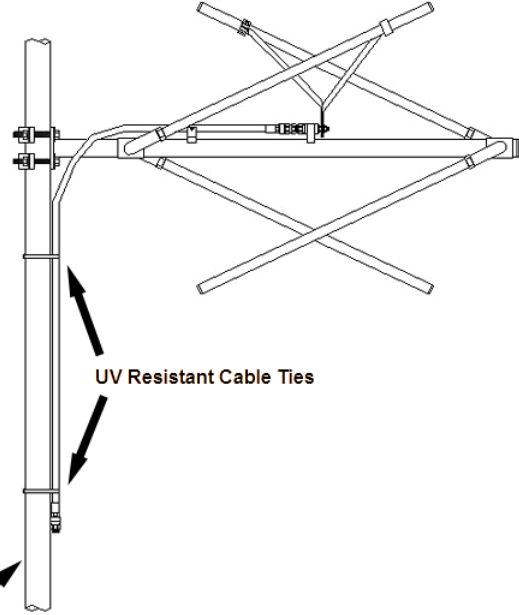


TOP VIEW



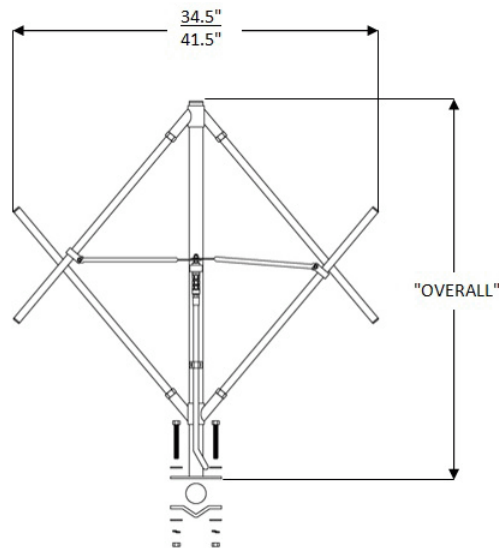
Mounting Bracket

SIDE VIEW



UV Resistant Cable Ties

SUPPORT STRUCTURE



"OVERALL"	
88.1-91.9	47.00"
92.1-94.7	45.50"
94.9-97.7	44.50"
97.9-100.9	43.50"
101.1-104.3	42.50"
104.5-107.9	41.25"

