

TV6 Calculation for Copiague, NY

Fcc Search

38.8 dBu

State

NY

 $H_{\Delta\Delta T}(m)$

213

Longitude

735638



0.300

FM Horizontal ERP

0.110

☒ Outside City Of 50k

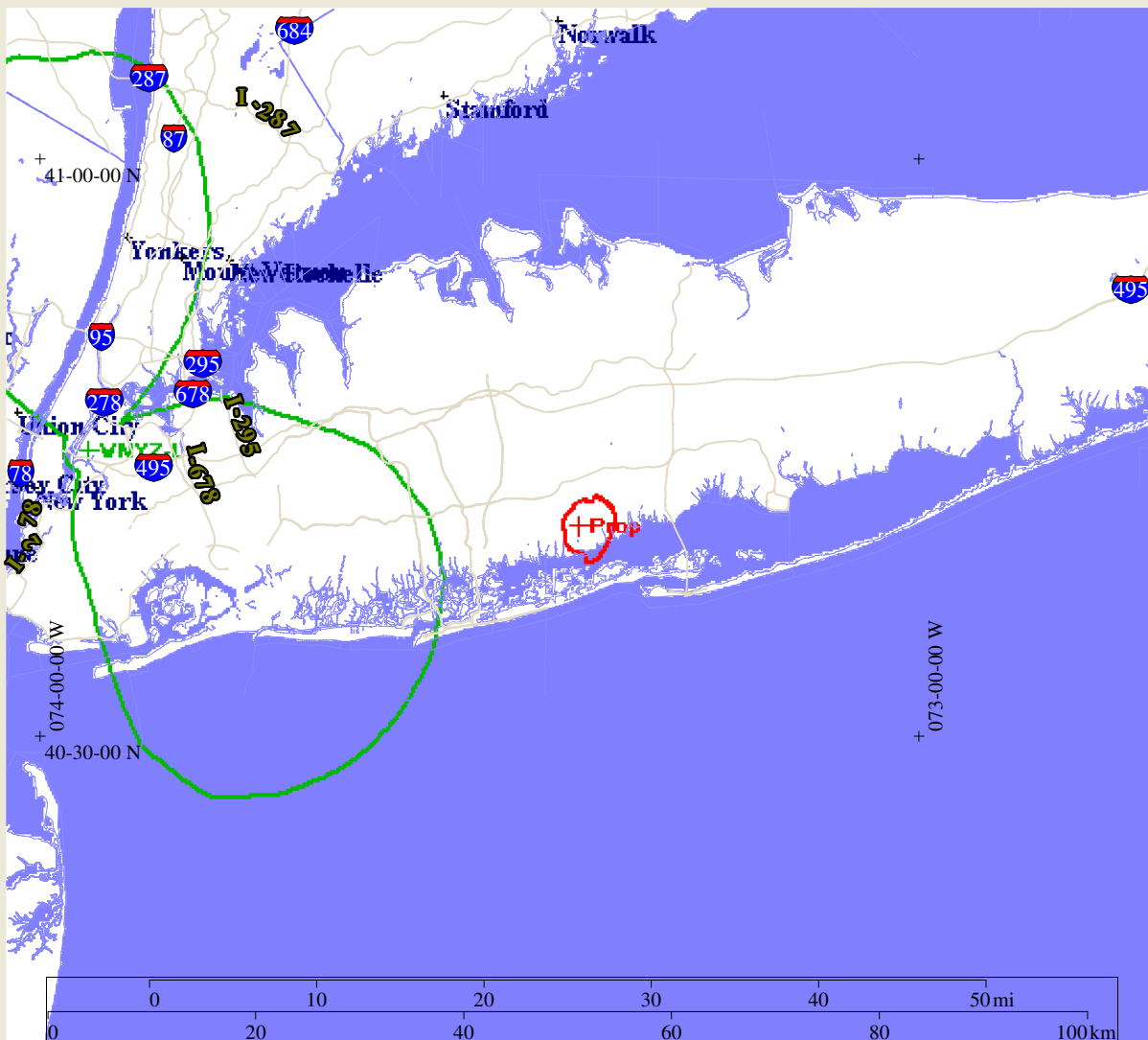
1

Plot Scale

500

☒☒ HideZeros☐ Plot All Centroids☒ Plot Inside Centroid Counts☐ Plot All Centroid Counts☒ Plot Contours☐ Print All Centroids to dBu☐ Print Centroids☒ Print TV Contour Table

Comp	Copy F	PrintText	Print Form
	Copy I		



WNYZ-L	06	0.300kW	ERP	224.0M	COR	AMSL	213.0M	H&AT	Lat.	404450	Lon.	735638
Prop	207	0.110kW	ERP	21.0M	COR	AMSL	9.7M	H&AT	Lat.	404058	Lon.	732304

```
Distance from TV to FM 47.8107km  Azi 278.6degr  Rev Azi 98.6 degr
Cutoff radius for channel 207 is 196 km
```

The FM horizontal polarization component is 0.110 kW,
and the area of just perceptible interference does not intersect a city of 50k,
so the effective ERP is $(P_v/40+P_h)$ 0.1127kW

The TV6 signal strength at the FM transmit site is 38.849 dBu

For F centroids (centroids where the TV6 signal strength is less than 68 dBu and which are also +/-70 degrees from line from the FM station to the TV station) a 6 dB bonus is added to the allowable FM signal.

TV Contour	Undesired/Desired Ratio	Total	Directional	Total
47	20.4	67.3	73.3	

Population in affected area	0
-----------------------------	---

2000 Block Centroids used