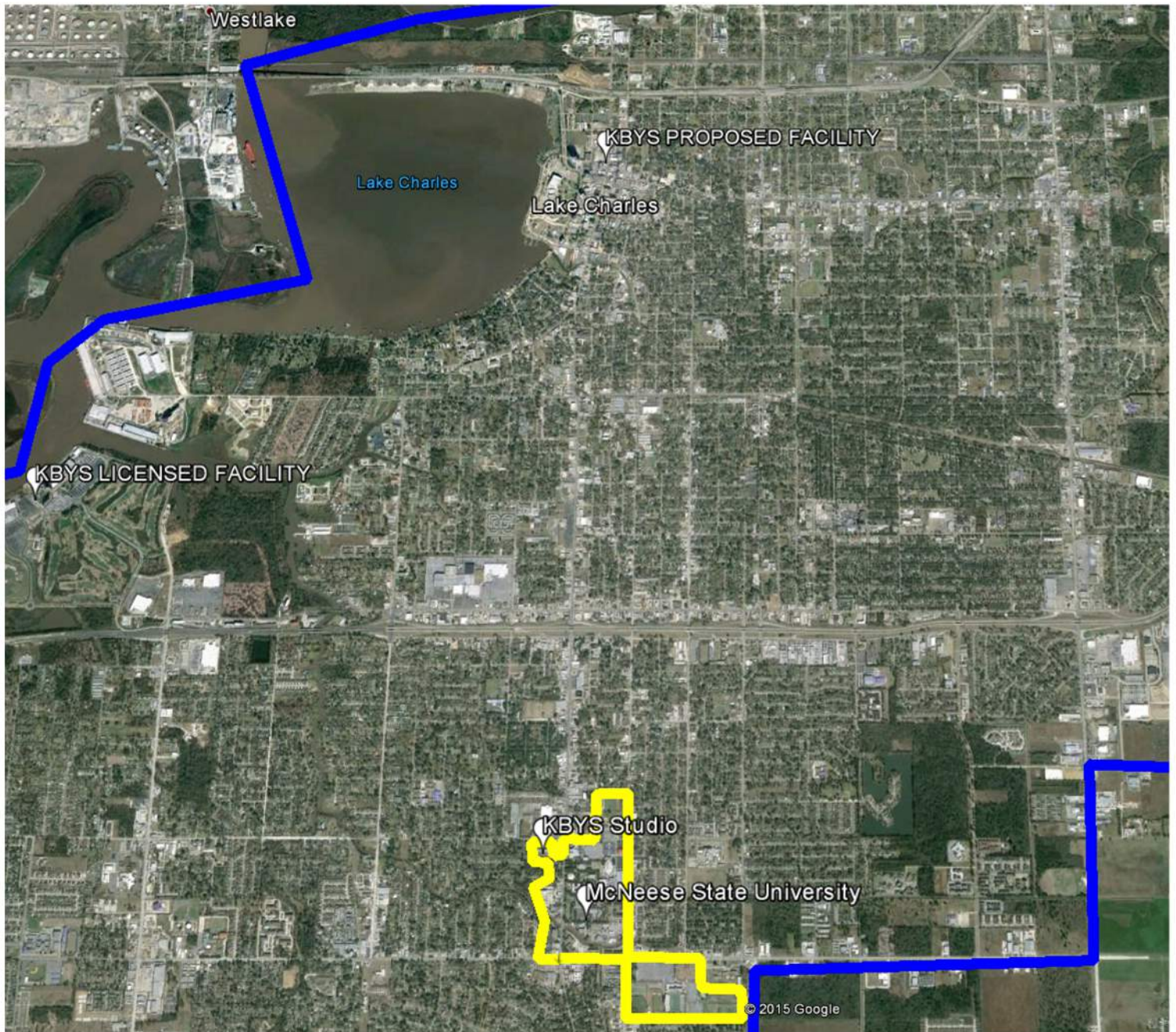


Exhibit 1-C Overview of KBYS Community of License Change



In addition to the arguments made in Exhibit 1-A, and Exhibit 1-B, Exhibit 1-C depicts the locations of the Lake Charles, LA city limits in relation to the locations of McNeese State University (licensee), the KBYS main studio location, the current KBYS licensed transmission facility, and the proposed KBYS transmission facility. All of the above stated facilities are within city limits of Lake Charles, LA, and are several miles from the community of Moss Bluff, LA.