

Exhibit 15.1 - Copy of USGS Topographic Map of Existing Site

Base Map Imagery Blank

Existing Site

43°57'17" NL

84°32'59" WL

NAD 1927

(43-57-16.8 NL; 84-32-58.6 WL NAD83)

▲824 ft/251 m

16

836

820



MUNN-REESE, INC.
Broadcast Engineering Consultants
Coldwater, MI 49036
1(517)278-7339

0 150 300ft

Scale 1:9,028

Exhibit 15.2 - Copy of USGS Aerial Photograph of Existing Site

Base Map

Imagery

Blank

Existing Site

43°57'17" NL

84°32'59" WL

NAD 1927

(43-57-16.8 NL; 84-32-58.6 WL NAD83)

▲ 24 ft/251 m

150 300ft

Scale 1:9,028



Exhibit 15.3

Vertical Plan of Antenna System

The site is located at 1130 Grout Road,
the city of Gladwin, Gladwin County, Michigan.

Site Location (NAD 27)

NL: 43° 57' 17"

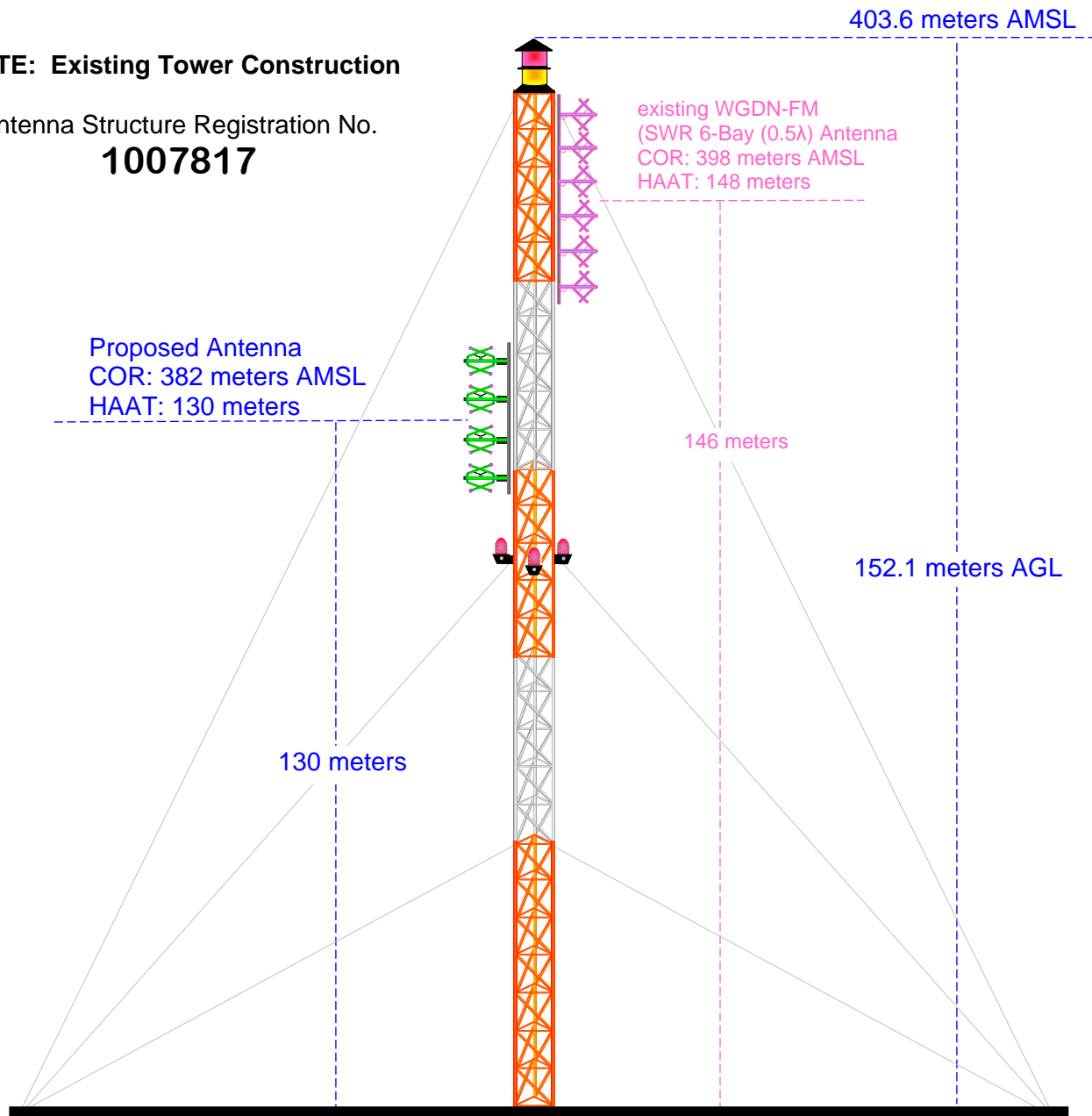
WL: 84° 32' 59"

(43-57-16.8 NL; 84-32-58.6 WL NAD1983)

NOTE: Existing Tower Construction

Antenna Structure Registration No.

1007817



Ground Elevation = 251.5 m AMSL

Drawing is not to Scale

MUNN REESE, INC.

Broadcast Engineering Consultants
Coldwater, MI 49036

Exhibit 15.4

Proposed FM Operating Specifications

Applicant: The Country King, Incorporated

Call: WKKM(FM)

City of License: Harrison, MI

Frequency: 90.7 MHz **Channel:** 214C3 **ERP:** 10.0 kW **HAAT:** 130 M

Transmitter Location: The site is located at 1130 Grout Road

City: Gladwin

County: Gladwin

State: Michigan

Site Coordinates: NL: 43° 57' 17" / WL: 84° 32' 59"

Tower Registration Number: 1007817

Proposed Operation: Class C3

Effective Radiated Power: 10.0 kW (H) 10.0 kW (V)

Height of Antenna Radiation Center Above:

	<u>Average Terrain</u>	<u>Mean Sea Level</u>	<u>Ground</u>
Horizontal	130 meters	382 meters	130 meters
Vertical	130 meters	382 meters	130 Meters

Elevation of Tower Site : 251.5 Meters AMSL

Overall Height of Structure Above Ground : 152.1 Meters AGL

Overall Height of Structure Above Mean Sea Level: 403.6 Meters AMSL

Exhibit 15.5 Present vs Proposed Service Contour Study

WKKM.P
Proposed Operation
Latitude: 43-57-17 N
Longitude: 084-32-59 W
ERP: 10.00 kW
Channel: 214
Frequency: 90.7 MHz
AMSL Height: 382.0 m
Horiz. Pattern: Directional
Vert. Pattern: No
Prop Model: None

60 dBu Contour
Total Population: 74,363
Total Area: 3,270 sq. km

WKKM.L
BLED20110718AAF
Latitude: 44-01-02 N
Longitude: 084-47-56 W
ERP: 0.10 kW
Channel: 214
Frequency: 90.7 MHz
AMSL Height: 366.0 m
Horiz. Pattern: Omni
Vert. Pattern: No
Prop Model: None

60 dBu Contour
Total Population: 7,654
Total Area: 138 sq. km

