

## **EXHIBIT 13**

**Waiver Request of Section 74.1204**  
K202CC Provo, Utah 80 Watts ERP  
Minor Modification – Fill In Service  
Calvary Chapel of Twin Falls, Inc.  
February 2012

The proposed site is contained entirely inside the service contour of second-adjacent FM Translator K204BO, Provo

### **K204BO**

The proposed site is contained entirely inside the service contour of second-FM Translator K204BO, 204D, .01 kW, Provo, UT. The level of least arriving protected F(50,50) signal at the proposed transmitter site is 103.1-dBu. Using the U/D method, the interfering contour is 143.1-dBu (free-space contour method employed). The interfering signal would, in the worst case at the maximum radial, extend only 4 meters, or 15 feet, from the center of radiation, proposed at 11 meters AGL. Attached is a portion of the USGS West Mountain(UT) Quadrangle showing this tower is located in a sparsely populated communications site on BLM land. The interference contour area does not touch the ground. There are no existing towers or communications buildings that close enough or tall enough to puncture the interfering contour. Because there are no residences, businesses or major roads that are located within this interference contour, Calvary Chapel of Twin Falls, Inc. respectfully requests a waiver of the FM translator contour overlap regulations with respect to second-adjacent FM Translator K204BO Provo, UT.

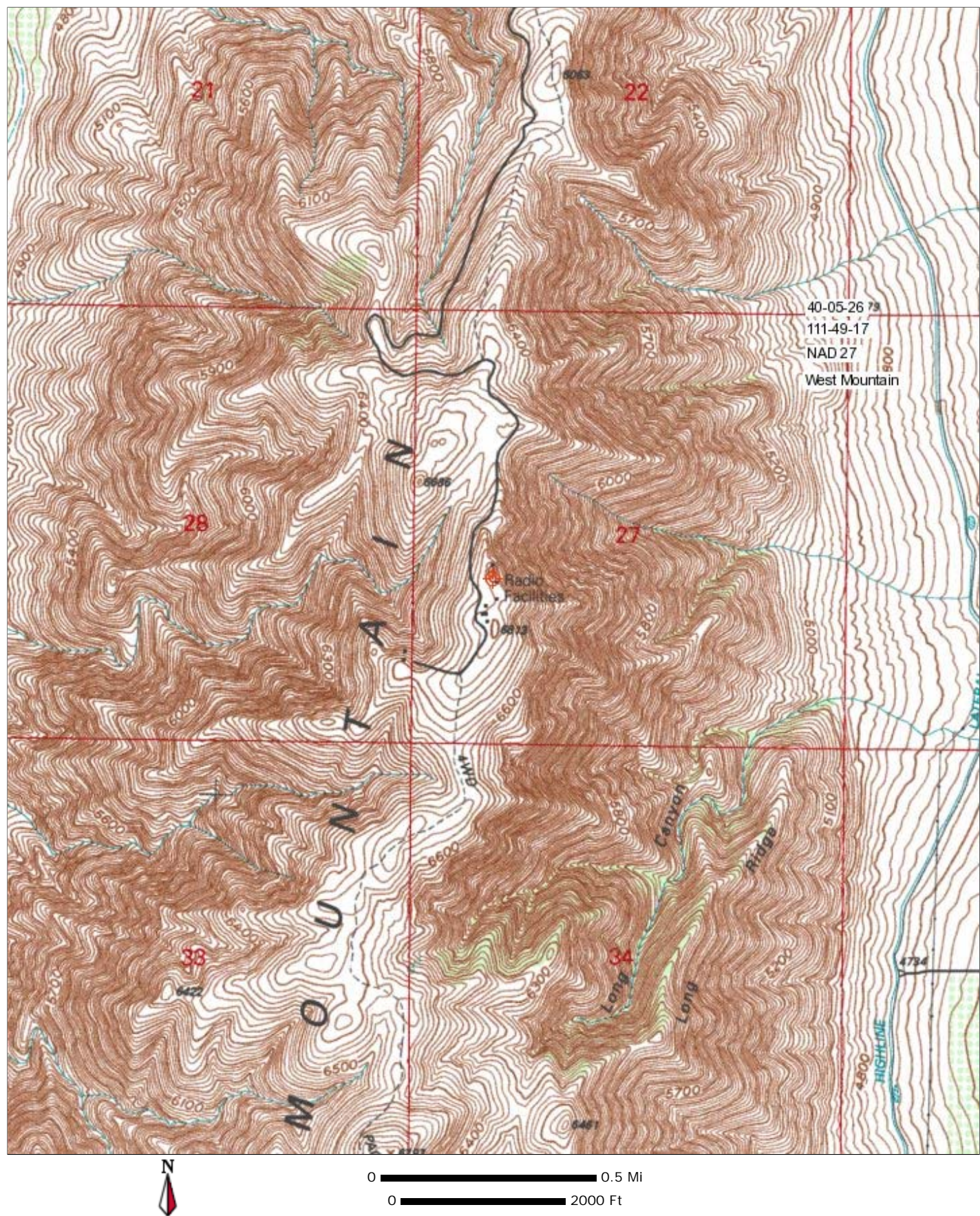
.

Calvary Chapel of Twin Falls, Inc.

Provo UT K202CC Fill In Calvary Chapel Of Twin Falls, Inc. CH# 202D - 88.3 MHz, Pwr= 0.08 kW DA, HAAT= 661.8 M, COR= 2090 M Average Protected F(50-50)= 25.67 km Standard Directional										
REFERENCE 40 05 26.0 N. 111 49 17.0 W.										
DISPLAY DATES DATA 02-15-12 SEARCH 02-22-12										
CH CITY	CALL	TYPE STATE	ANT AZI <--	DIST FILE #	LAT LNG	PWR(kW) HAAT(M)	INT(km) COR(M)	PRO(km) LICENSEE	*IN* (Overlap in km)	*OUT*
202D Provo	K202CC	LIC DV_ UT	302.8 122.8	0.1 BLFT20001109AAW	40 05 27.0 111 49 19.0	0.010 649	45.0 2073	11.7 Calvary Chapel Of Twin Fal	-52.3*	-45.9*
204D Provo, Etc.	K204B0	LIC _C_ UT	171.4 351.4	0.2 BLFT20050607ABK	40 05 21.0 111 49 16.0	0.010 673	0.2 2103	14.9 Utah State University Of A	-1.5*	-14.7*
202A Salt Lake City	KCPW-FM	LIC DC_ UT	355.6 175.6	74.9 BLED20000724AAG	40 45 48.0 111 53 23.0	2.350 -61	72.0 1437	23.7 Wasatch Public Media	1.6	41.2
201A Pleasant Grove	KPGR	LIC _CN UT	15.1 195.1	31.4 BLED19810914AE	40 21 48.0 111 43 30.0	0.115 -344	13.6 1457	9.7 Alpine School District	8.5	5.8
201D Coalville, Etc.	K201AE	LIC DC_ UT	18.7 198.9	89.7 BLFT20030513ACN	40 51 18.0 111 28 44.0	0.135 736	31.2 2765	20.7 Community Wireless Of Park	46.3	48.7
202D Manti, Etc.	K202BG	LIC DVN UT	177.2 357.2	85.3 BLFT19900730TE	39 19 23.0 111 46 23.0	0.033 683	36.6 2587	10.9 University Of Utah	47.5	65.3
202A Evanston	KPMD	CP _CX WY	28.4 209.0	160.0 BPED20090630ABS	41 21 10.0 110 54 29.0	0.285 411	90.8 2633	31.6 Western Inspirational Broa	51.0	66.4
203D Rural Summit County	K203AB	LIC DHN UT	18.7 198.9	89.7 BLFT19910206TA	40 51 18.0 111 28 44.0	0.026 811	26.0 2848	16.9 University Of Utah	51.4	52.5
205D Price	K205FK	LIC _V_ UT	117.4 297.9	80.2 BLFT20110616AAX	39 45 23.0 110 59 21.0	0.010 2988	0.2 2988	12.3 University Of Utah	56.7	67.4
203D Tooele	K203CQ	LIC _V_ UT	320.8 140.4	65.2 BLFT20100609AFE	40 32 36.0 112 18 33.0	0.041 -138	6.4 1539	4.5 Calvary Chapel Of Twin Fal	57.4	58.1
06NT Peoa And Oakley	K06OV	LI _D_N UT	28.8 209.1	80.2 BLTTV20090624ADT	40 43 21.0 111 21 46.0	0.040 332	18.3 2195	1.3 Summit County	19.6R	60.7M
205C3 Ephraim	KAGJ	LIC _CX UT	177.0 357.1	85.5 BLED20110819AAJ	39 19 18.0 111 46 11.0	0.380 708	1.4 2602	23.5 Snow College	82.9	61.9
06NT Spring Glen, Etc.	K06DR	LI _DHN UT	133.2 313.7	90.7 BLTTV1397	39 31 49.0 111 03 03.0	0.028 978	19.4 2926	7.6 Carbon County	27.0R	63.7M
202D Orangeville, Etc.	K202AD	LIC DVN UT	148.7 329.1	112.0 BLFT19821102IJ	39 13 40.0 111 08 46.0	0.019 405	9.4 2573	2.9 University Of Utah	90.5	65.5
06NT Wanship	K06JH	LI _D_N UT	24.2 204.5	87.6 BLTTV20021118ACN	40 48 31.0 111 23 41.0	0.043 95	15.9 1824	3.9 Summit County	19.7R	67.8M
06NT Scipio, Holden	K06DH	LI _HN UT	195.6 15.4	102.8 BLTTV3011	39 11 54.0 112 08 33.0	0.027 379	1.2 2004	13.1 Millard County	14.2R	88.6M
06NT Henefer, Etc.	DK06IM	LI _DHN UT	18.2 198.4	103.8 BLTTV4927	40 58 40.0 111 26 08.0	0.005 192	11.3 1865	0.1 Summit County	11.4R	92.4M

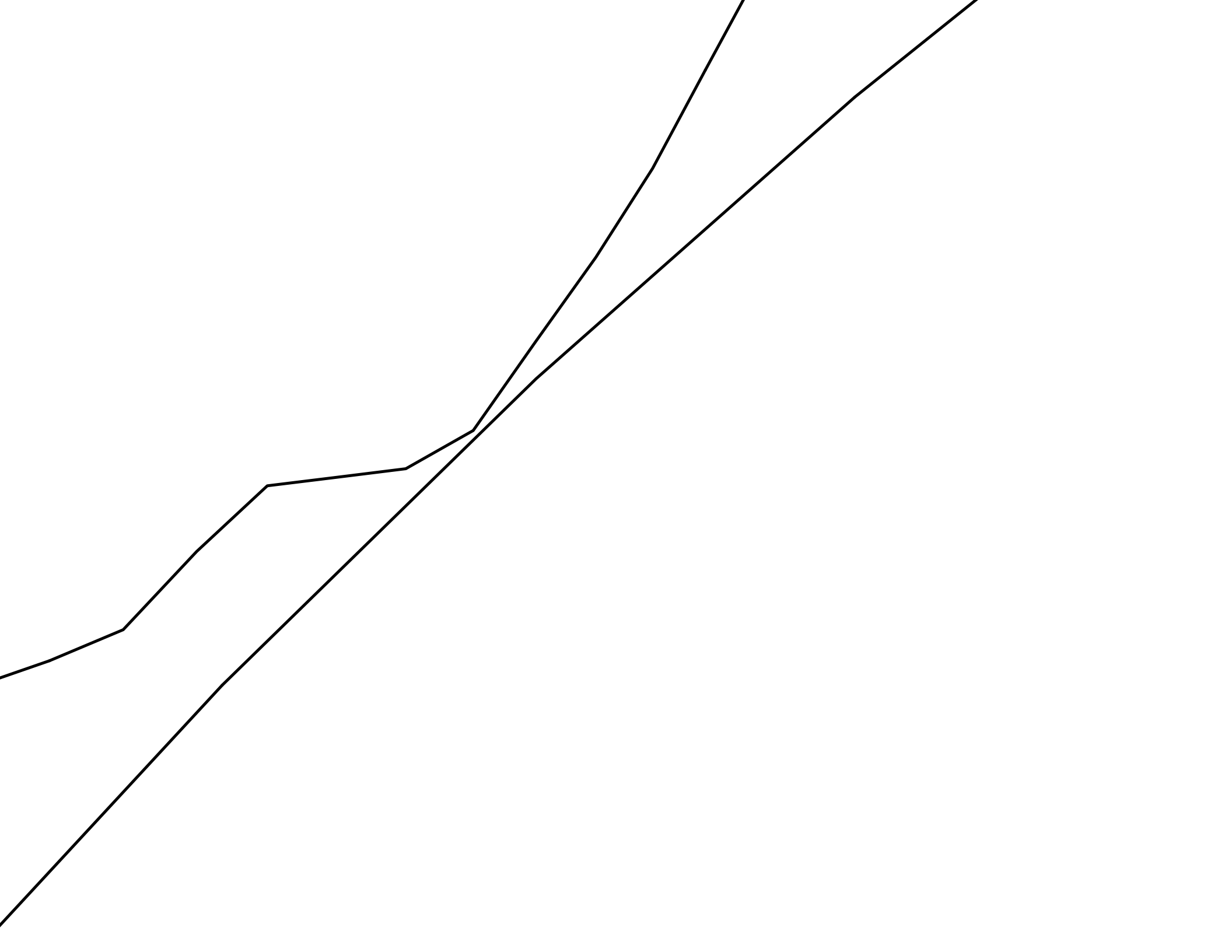
Terrain database is USGS 03 SEC , R= 73.215 qualifying spacings or FCC minimum Spacings in KM, M= Margin in KM  
 Contour distances are on direct line to and from reference station. Reference zone= , Co to 3rd adjacent.  
 Ant Column: (D= DA Standard, Z= DA 73.215, N= Not DA 73.215, \_= Omni), Polarization (C,H,V,E), Beamtilt(Y,N,X)  
 "\*"affixed to 'IN' or 'OUT' values = site inside protected contour.

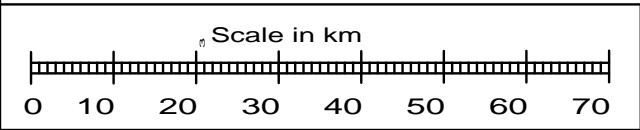
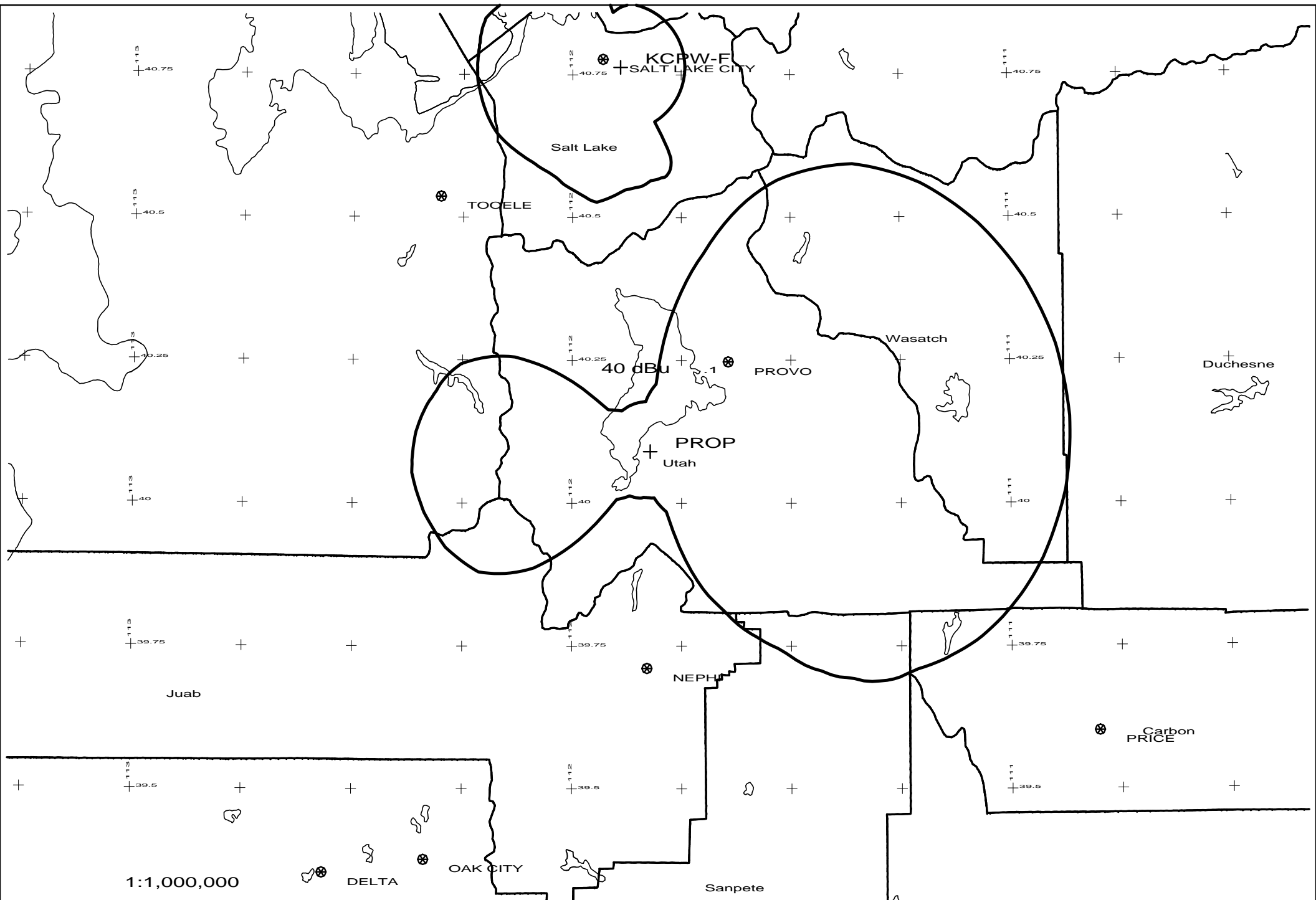






PROP vs KPGR  
CCTF - 02/12





PROP 202D .08kW 2090M AMSL  
N. Lat. 40 05 26 W. Lng. 111 49 17

PROP vs KCPW-FM  
CCTF - 02/12