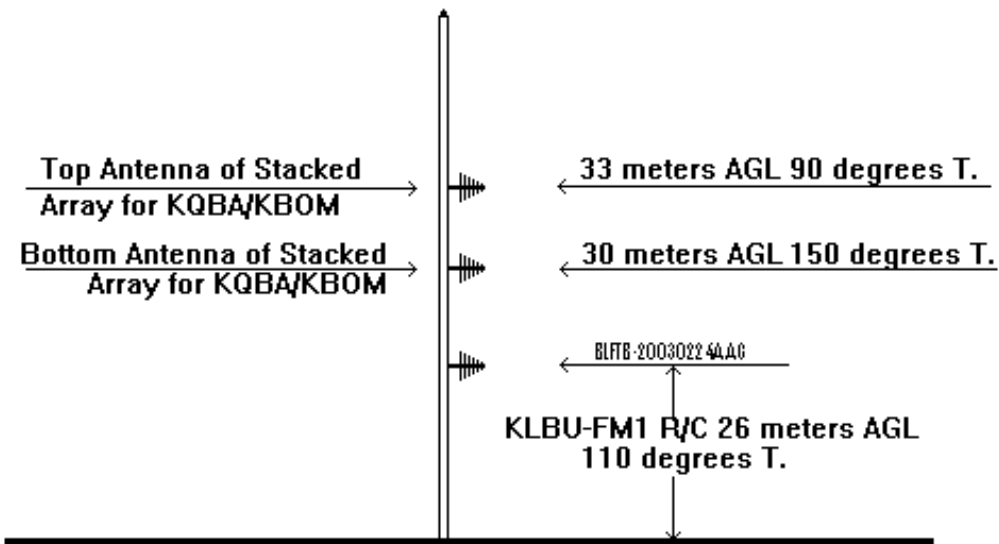


EXHIBIT E-1  
KQBA-FM1 & KBOM-FM1  
Antenna Placement Detail

FCC File#  
BPFTB-20040616ABP  
BPFTB-20040614ABM

*(NOT TO SCALE)*

*VERTICAL PLAN SKETCH*



Radiation Center for Proposed Stacked Array  
for KQBA-FM1 & KBOM-FM1 is 32.0 meters AGL  
Power Split for the Stacked Array is 50% / 50%  
[all elevations rounded to the nearest meter]

All Antennas are Scala CLFM LPA  
All Antennas are Vertically Polarized