

EXHIBIT 12

Page #1, Waiver Request of Section 74.1204

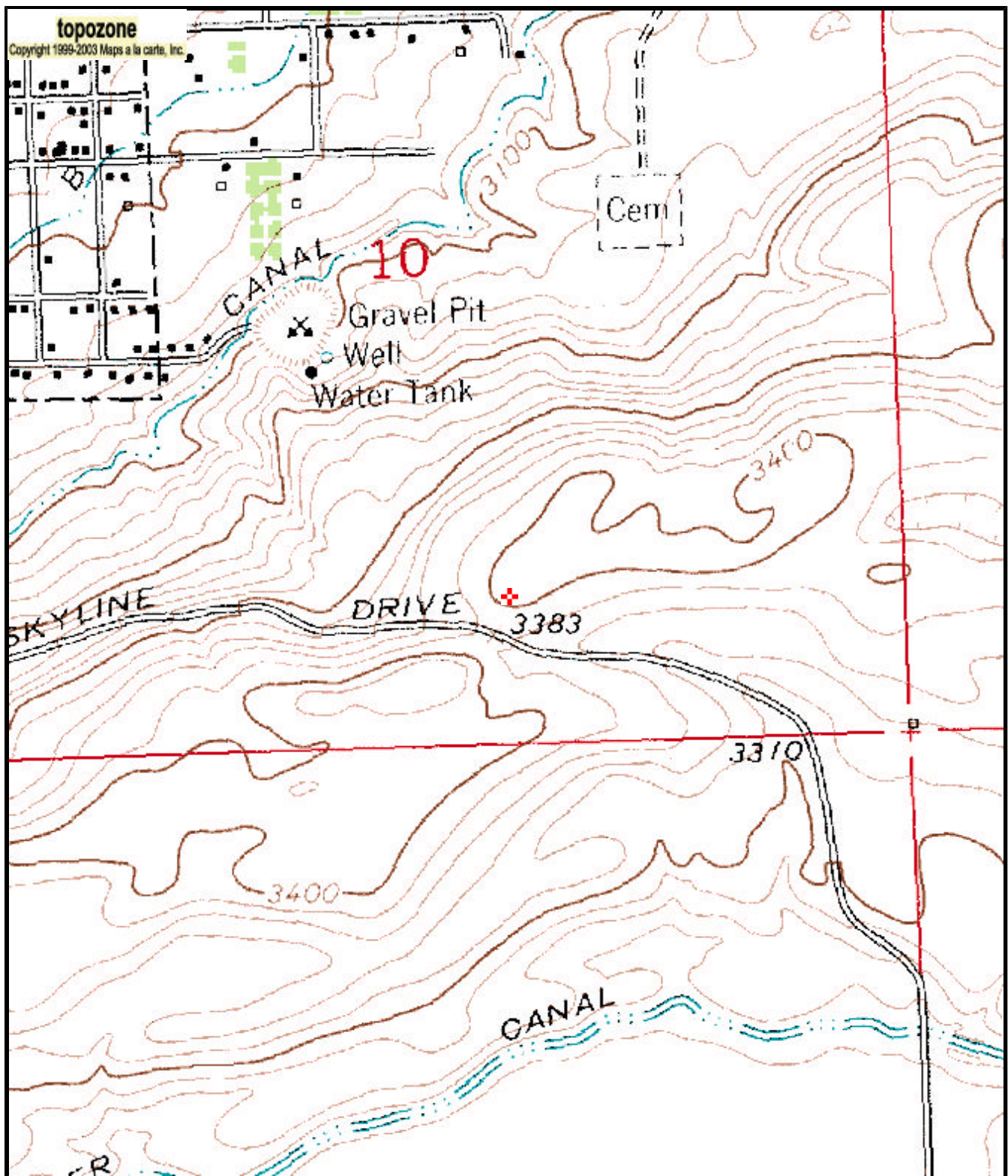
K212DV, Polson, MT Channel 266 75 Watts ERP

Calvary Chapel of Twin Falls, Inc. 5/05

The proposed site is contained entirely inside the service contour of second-adjacent FM Station KIBG, Bigfork, MT

KIBG.CP

The proposed site is contained entirely inside the service contour of second-adjacent KIBG, Channel 264, Class C, 85 kW, Bigfork, MT. The level of the second-adjacent KIBG arriving protected F(50,50) signal at the proposed transmitter site is 99.8-dBu. Using the Undesired-to-Desired method for calculating proposed interference (the basis of the FCC current contour overlap regulations and an acceptable method for the purposes of determining lack of interference for an FM Translator), the proposed interfering contour with respect to KIBG is 139.8-dBu (free-space contour method employed). This means that the 139.8-dBu interfering signal would, in the worst case at the maximum radial, extend 6 meters from the center of radiation, which already exists at 31 meters AGL. This interference contour does not touch the ground and is a remote location where there are no structures tall enough to pierce the interference area. Since no population inhabits this 39.8-dBu interfering area, Calvary Chapel of Twin Falls, Inc. respectfully requests a waiver of the contour overlap regulations with respect to second-adjacent channel station KIBG.



Map center is 47° 40' 37"N, 114° 08' 33"W (NAD27)

Polson quadrangle

Projection is UTM Zone 11 NAD83 Datum

M=15.861
G=2.114