

W221CG APPLICATION FOR MINOR CHANGE

This technical report has been developed in support of an application for a minor modification to FM translator W221CG's CP (BPFT-20100217AAA) requesting a change in channel to first adjacent channel 222, a change ERP to 250 Watts vertical only, an increase in HAAT and a change in antenna.

Allocations analysis:

Allocation exhibits are provided as required by FCC form 349 as follows:

- E1 Interference channel study on requested channel 222**
 - E1A Interference plot to W222AF**
 - E1B Interference study to WZGC on third adjacent channel**
 - E1C Proposed directional pattern**
 - E1D Vertical elevation pattern**
 - E1E Aerial map**
- E2 60 dBu plots**
 - E2A 60 dBu overlap plot**
- E3 HAAT tabulation**
- E4 ASR**

Exhibit E1 demonstrates clearance to all facilities with the exception of third adjacent channel WZGC which is addressed below. Exhibit E2 shows that the proposed 60 dBu is contained within the primary station's 60 dBu, and E2A demonstrates overlap between the proposed 60 dBu and the licensed W221CG 60 dBu. The FCC 30 second terrain database provided by V-Soft Communications has been used throughout this study.

The proposed W221CG channel 222 facility will be located inside the WZGC third adjacent channel's 60 dBu contour. Therefore, an interference analysis has been conducted based on the D/U ratio of +40 dB at the proposed site. The WZGC contour at that site is 79.655 dBu and the proposed interference contour of 119.655 dBu (50,10) is at a distance of 115.4 meters. Based on the proposed radiation center height above ground of 53 meters that yields a depression angle of 24.7 degrees and a reduced ERP of 0.137 kW. The resulting 119.655 dBu (50,10) interfering contour is 85.4 meters which will not reach any buildings or major highways. An aerial photograph is included as E1E demonstrating that the closest house is 90 meters away. Consequently, based on this

Anderson Associates

showing that the interfering contour will not reach a populated area, a waiver of Section 74.1204 is requested.

Further vertical clearance is demonstrated in the following table.

Depression Angle (Deg)	F	ERP X F ² kW	119.655 dBu meters	Vertical Clearance meters
24.7	.740	0.137	85.4	17.3
30	.645	0.104	74.7	15.7
35	.562	0.079	64.9	15.8
40	.470	0.055	54.1	18.2
45	.360	0.032	41.3	23.8
50	.250	0.016	29.2	30.6*

*** At 63 meters horizontal distance from the tower. No further analysis needed based on attached aerial photograph.**

Proposed site, antenna and RF calculation:

The RF contribution for the proposed facility at ASR#1018983 has been calculated to be 0.416 *uWatts/cm²* using the formula provided below and a composite CLFM vertically polarized antenna skewed 120 degrees (130 and 250 degrees True). The elevation pattern is provided in exhibit E1D. This is 0.2% of of the maximum permissible 200 micro-Watts/cm² exposure for general population/uncontrolled exposure and less than the 5% of that level that is excluded from consideration. A vertical factor of .36 at 45 degrees depression angle was used for a worst case analysis.

$$S \text{ (RF in micro-Watts/cm}^2\text{)} = \frac{33.4 (F^2 - \text{Vert Factor}) \times (H \text{ ERP} + V \text{ ERP in Watts})}{R^2 \text{ (distance to radiation center in meters)}}$$



Charles M. Anderson January 24, 2011
1519 Euclid Avenue
Bowling Green, KY 42103
© 2011 Anderson Associates

E1

REFERENCE		CH#	222D - 92.3 MHz, Pwr= 0.25 kw DA, HAAT= 49.4 M, COR= 340 M				DISPLAY DATES				
33 49 19.0 N.			Average Protected F(50-50)= 9.21 km				DATA 01-22-11				
84 40 49.0 W.			Standard Directional				SEARCH 01-24-11				
CH	CALL	TYPE	ANT	AZI	DIST	LAT	PWR(kw)	INT(km)	PRO(km)	*IN*	*OUT*
CITY		STATE		<--	FILE #	LNG	HAAT(M)	COR(M)	LICENSEE	(Overlap in km)	(in km)
221D	W221CG	LIC _V_		300.2	12.5	33 52 43.0	0.038	9.5	6.7	-3.6	-3.7
Kennesaw		GA		120.1	BLFT20100125AIL	84 47 52.0		341	Cumulus	Licensing Llc	
223D	W221CG	CP _C_		0.0	0.0	33 49 19.0	0.120	8.5	6.0	-10.7*	-9.0*
Lithia Springs		GA		0.0	BPFT20100217AAA	84 40 49.0		324	Cumulus	Licensing Llc	
225C1	WZGC	LIC NC_		92.9	31.6	33 48 26.0	66.000	9.9	72.4	12.9	-41.7*
Atlanta		GA		273.1	BMLH20080226ABQ	84 20 21.8	340	612	Cbs Radio Inc. of Atlanta		(1)
222C0	WDEF-FM	LIC _C_		338.2	157.2	35 08 06.0	100.000	191.6	87.5	-36.4*	63.2
Chattanooga		TN		157.8	BMLH20050831ADG	85 19 25.0	360	743	Jackson Telecasters, Inc.		
222D	W222AF	LIC _CN		33.2	20.8	33 58 41.0	0.010	23.7	7.0	-5.4*	6.1
Marietta		GA		213.3	BLFT19970707TI	84 33 25.0	130	433	Immanuel Broadcasting Netw		
275D	W275BK	LIC _C_		106.1	30.8	33 44 41.0	0.160	21.7	20.6	9.5R	21.3M
Decatur		GA		286.3	BLFT20100401AGD	84 21 36.0		580	Roa Licenses, Llc		
220A	WCLK	CP NCX		107.8	26.5	33 44 56.0	2.500	2.2	23.6	14.2	1.9
Atlanta		GA		287.9	BPED20081024ABB	84 24 27.0	94	372	Clark Atlanta University		
220A	WCLK	LIC ZC_		107.8	26.5	33 44 56.0	6.000	2.2	23.6	14.3	1.9
Atlanta		GA		287.9	BLED20010712ACT	84 24 26.0	94	372	Clark Atlanta University		
221A	WBTR-FM	LIC _CN		227.6	42.3	33 33 54.0	0.580	31.2	21.0	4.4	11.6
Carrollton		GA		47.4	BLH19861029KC	85 01 02.0	194	498	Wyai, Inc.		
223C3	WEKS	LIC _CX		169.2	77.1	33 08 20.0	12.000	57.1	38.0	11.5	27.1
Zebulon		GA		349.3	BLH20060714AAC	84 31 31.0	145	380	Legacy Media - South Atlan		
219C2	WCCV	LIC DC_		318.9	49.9	34 09 34.0	7.300	1.7	28.1	44.8	21.5
Cartersville		GA		138.7	BLED20010327AAC	85 02 13.0	285	518	Immanuel Broadcasting Netw		
222A	WMOQ	LIC _CX		94.3	104.4	33 44 49.0	3.000	72.9	22.3	22.5	52.8
Bostwick		GA		274.9	BLH20071022BXC	83 33 23.0	100	324	Bostwick Broadcasting Grou		
222C0	WLWI-FM	LIC _CX		222.3	211.6	32 24 13.0	100.000	173.4	73.3	31.8	116.6
Montgomery		AL		41.4	BMLH20070402ADQ	86 11 47.0	334	397	Cumulus Licensing Llc		
221D	W221AZ	LIC DCN		82.7	47.1	33 52 28.0	0.027	4.8	3.3	33.9	31.9
Lilburn		GA		263.0	BLFT19950802TO	84 10 26.0	82	372	Toccoa Falls College		
221D	W221AW	LIC _C_		15.8	52.2	34 16 26.0	0.010	14.6	10.4	35.1	38.3
North Canton		GA		195.9	BLFT20050420ABJ	84 31 32.0		602	Immanuel Broadcasting Netw		
219C3	WMVW	LIC DCX		160.1	68.3	33 14 39.0	13.000	2.7	27.2	55.4	40.2
Peachtree City		GA		340.2	BLED20100510AKQ	84 25 49.0	75	323	Life Radio Ministries Inc		
221A	WJGA-FM	LIC _CN		132.3	89.7	33 16 37.0	2.150	28.5	19.4	49.5	53.2
Jackson		GA		312.7	BLH19861029KB	83 57 59.0	114	304	Earnhart Broadcasting Co.,		
276D	641708	APP _C_		315.9	65.1	34 14 30.0	0.250	7.1	7.1	9.5R	55.6M
Atlanta Junction		GA		135.7	BNPFT20030314CKD	85 10 22.0		213	Alabama Christian Radio In		
222C	WLWI-FM	CP NCX		225.6	258.6	32 10 39.0	100.000	190.5	86.5	61.6	150.0
Montgomery		AL		44.5	BPH20091030AHL	86 38 33.0	494	557	Cumulus Licensing Llc		
222A	WLZN	LIC NCN		140.0	151.5	32 46 26.0	3.000	75.0	23.7	64.9	88.2
Macon		GA		320.5	BLH19920813KB	83 38 15.0	100	211	Cumulus Licensing Llc		
219A	WPIL	LIC DCX		254.2	83.2	33 36 55.0	1.300	1.6	11.4	73.2	70.7
Heflin		AL		73.7	BLED20100420AIG	85 32 41.0	26	339	Alabama Christian Radio In		

Terrain database is FCC NGDC 30 Sec , R= 73.215 qualifying spacings or FCC minimum Spacings in KM, M= Margin in KM
Contour distances are on direct line to and from reference station. Reference zone= East Zone, Co to 3rd adjacent.
Ant Column: (D= DA Standard, Z= DA 73.215, N= Not DA 73.215, _= Omni), Polarization (C,H,V,E), Beamtilt(Y,N,X)
"*"affixed to 'IN' or 'OUT' values = site inside protected contour.

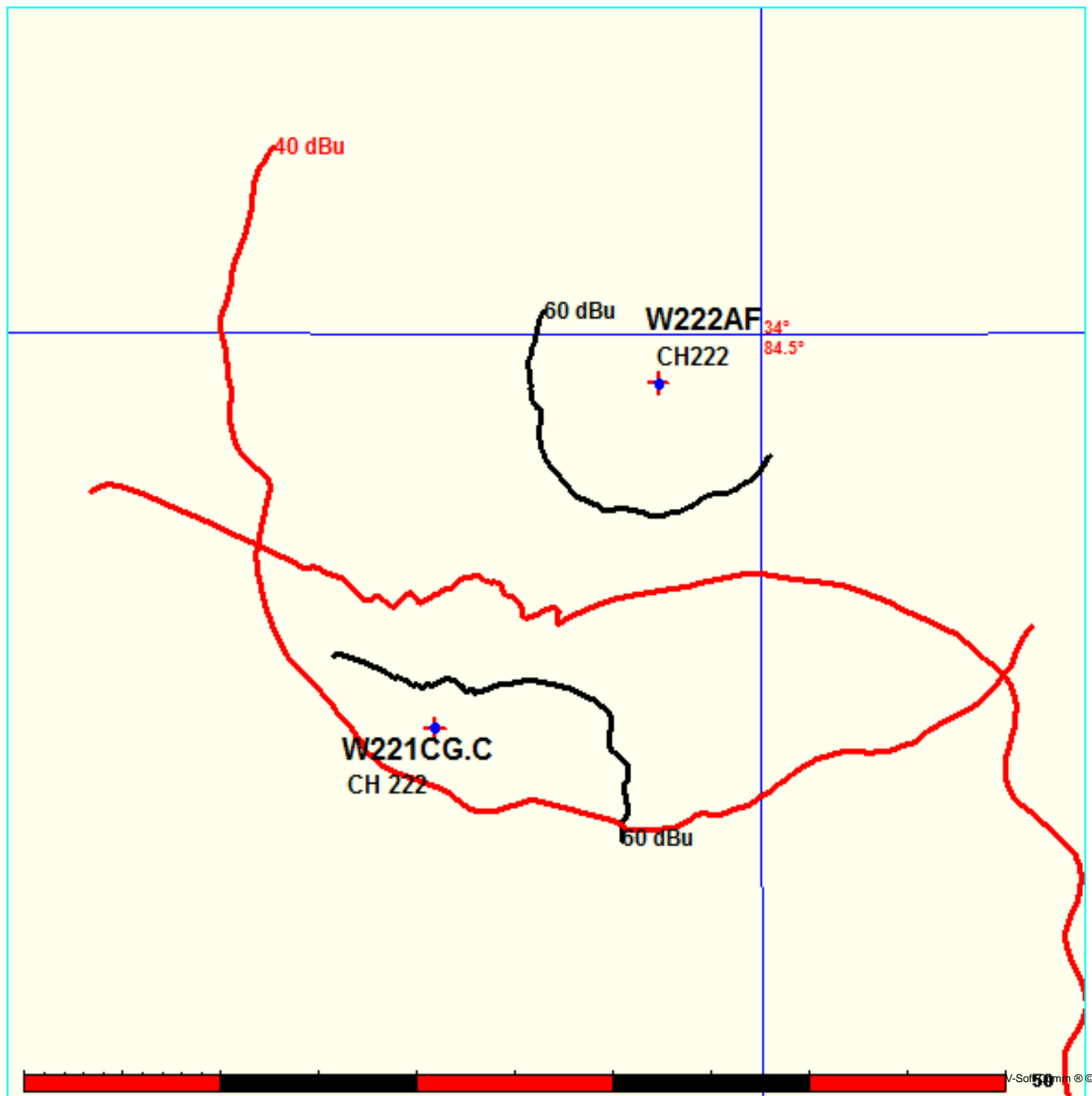
(1) See interference analysis in technical report,

E1A W221CG - W222AF PLOT

FMCommander Single Allocation Study - 01-24-2011 - FCC NGDC 30 Sec
W221CG.C's Overlaps (In= -5.37 km, Out= 6.1 km)

W221CG.C CH 222 D DA
Lat= 33 49 19.0, Lng= 84 40 49.0
0.25 kW 49.4 M HAAT, 340 M COR
Prot.= 60 dBu, Intef.= 40 dBu

W222AF CH 222 D BLFT19970707TI
Lat= 33 58 41.0, Lng= 84 33 25.0
0.01 kW 130 M HAAT, 433 M COR
Prot.= 60 dBu, Intef.= 40 dBu



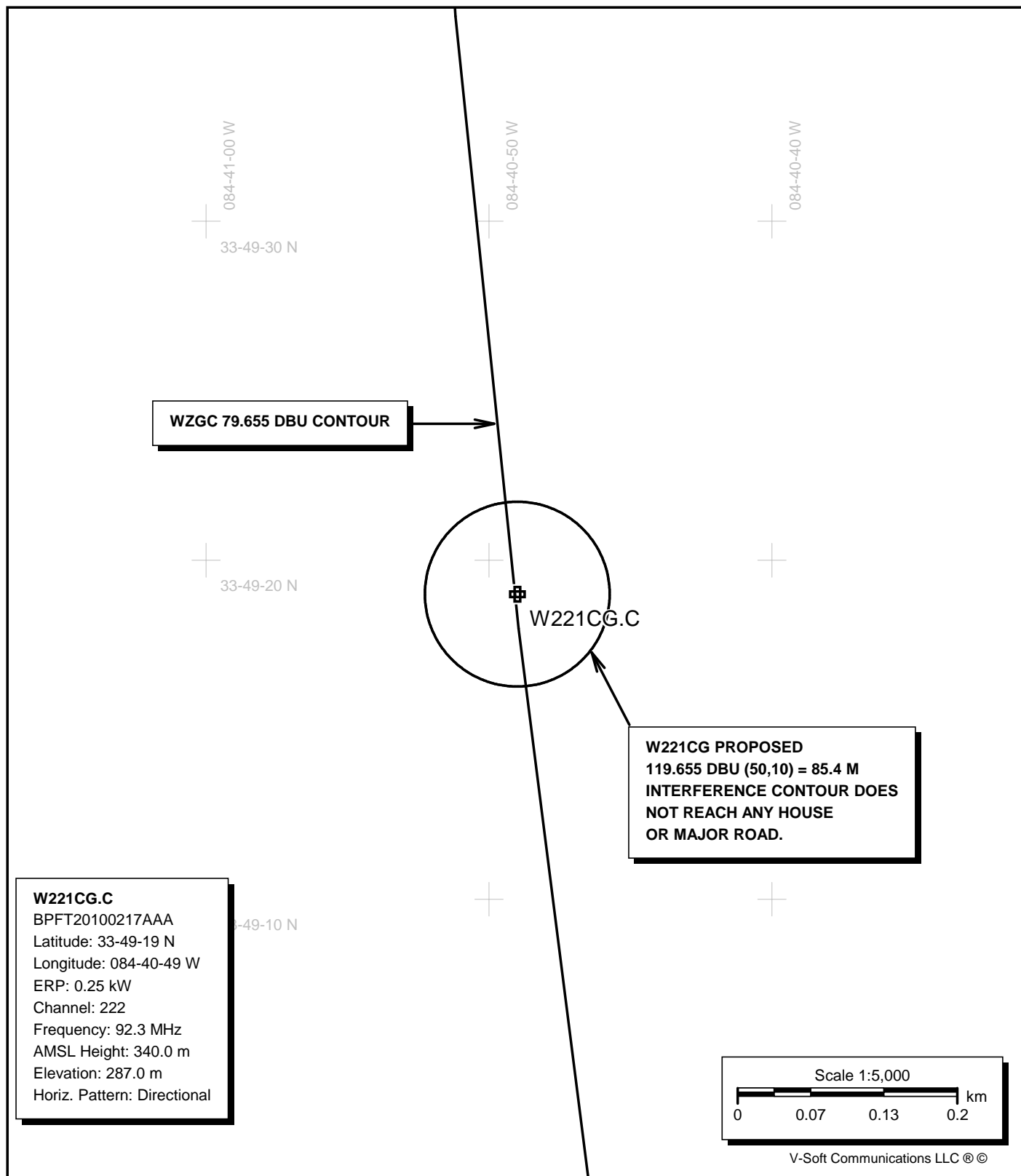
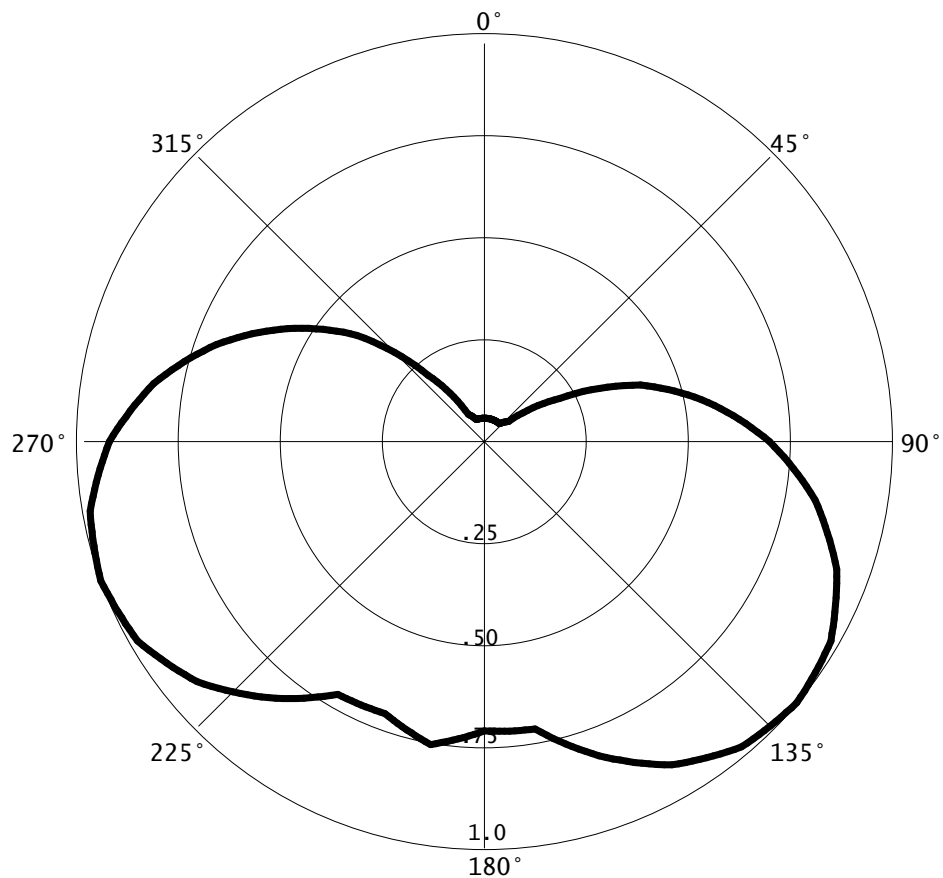


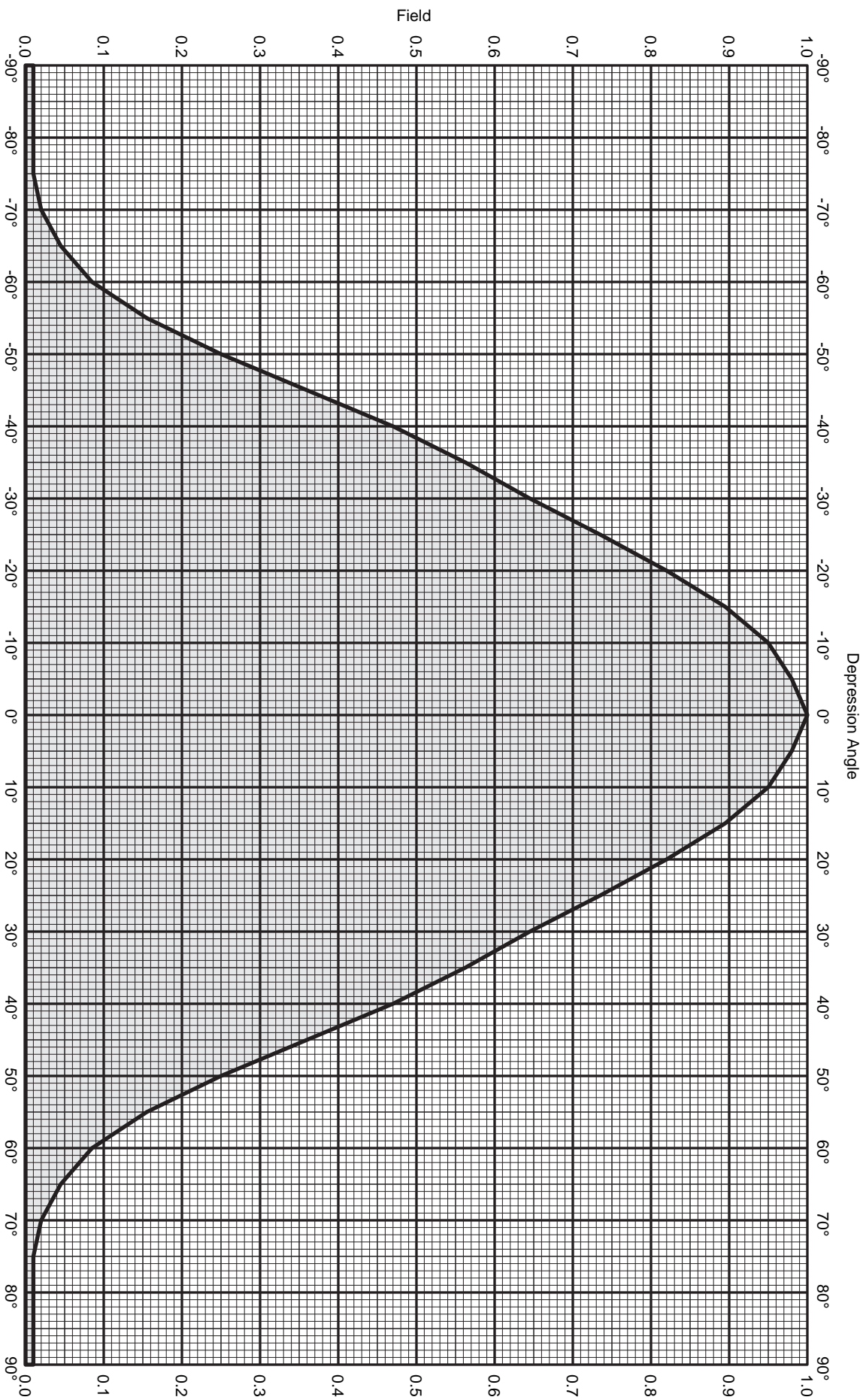
EXHIBIT E1B

221CG PROPOSED CHANNEL 222 INTERFERENCE CONTOUR

EIC DA PATTERNGraph is Relative Field

Azi	Field	dBk	kw
000	0.058	-30.8	0.001
010	0.058	-30.8	0.001
020	0.058	-30.8	0.001
030	0.058	-30.8	0.001
040	0.058	-30.8	0.001
050	0.078	-28.2	0.002
060	0.214	-19.4	0.011
070	0.408	-13.8	0.042
080	0.557	-11.1	0.078
090	0.699	-9.1	0.122
100	0.823	-7.7	0.169
110	0.919	-6.8	0.211
120	0.981	-6.2	0.241
130	1.000	-6.0	0.250
140	0.981	-6.2	0.241
150	0.919	-6.8	0.211
160	0.823	-7.7	0.169
170	0.718	-8.9	0.129
180	0.712	-9.0	0.127
190	0.757	-8.4	0.143
200	0.712	-9.0	0.127
210	0.718	-8.9	0.129
220	0.823	-7.7	0.169
230	0.919	-6.8	0.211
240	0.981	-6.2	0.241
250	1.000	-6.0	0.250
260	0.981	-6.2	0.241
270	0.919	-6.8	0.211
280	0.823	-7.7	0.169
290	0.699	-9.1	0.122
300	0.557	-11.1	0.078
310	0.408	-13.8	0.042
320	0.214	-19.4	0.011
330	0.078	-28.2	0.002
340	0.058	-30.8	0.001
350	0.058	-30.8	0.001





CL-FM Log-periodic

FM

7.0 dBd (9.15 dBi)

Vertical polarization



KATHREIN
SCALA DIVISION

Post Office Box 4580
Medford, OR 97501 (USA)
Phone: (541) 779-6500
Fax: (541) 779-3991
<http://www.kathrein-scala.com>



CL-FM Log-periodic
FM

7.0 dBd (9.15 dBi)

Vertical polarization

Vertical radiation pattern

Angle	Field	Rel.dB	dBd	PwrMult	Angle	Field	Rel.dB	dBd	PwrMult
-90	0.010	-40.00	-33.00	0.00	-45	0.360	-8.87	-1.87	0.65
-89	0.010	-40.00	-33.00	0.00	-44	0.382	-8.36	-1.36	0.73
-88	0.010	-40.00	-33.00	0.00	-43	0.404	-7.87	-0.87	0.82
-87	0.010	-40.00	-33.00	0.00	-42	0.426	-7.41	-0.41	0.91
-86	0.010	-40.00	-33.00	0.00	-41	0.448	-6.97	0.03	1.01
-85	0.010	-40.00	-33.00	0.00	-40	0.470	-6.56	0.44	1.11
-84	0.010	-40.00	-33.00	0.00	-39	0.488	-6.22	0.78	1.20
-83	0.010	-40.00	-33.00	0.00	-38	0.507	-5.90	1.10	1.29
-82	0.010	-40.00	-33.00	0.00	-37	0.525	-5.59	1.41	1.38
-81	0.010	-40.00	-33.00	0.00	-36	0.544	-5.29	1.71	1.48
-80	0.010	-40.00	-33.00	0.00	-35	0.562	-5.00	2.00	1.59
-79	0.010	-40.00	-33.00	0.00	-34	0.579	-4.75	2.25	1.68
-78	0.010	-40.00	-33.00	0.00	-33	0.595	-4.50	2.50	1.78
-77	0.010	-40.00	-33.00	0.00	-32	0.612	-4.26	2.74	1.88
-76	0.010	-40.00	-33.00	0.00	-31	0.628	-4.03	2.97	1.98
-75	0.010	-40.00	-33.00	0.00	-30	0.645	-3.81	3.19	2.09
-74	0.012	-38.42	-31.42	0.00	-29	0.663	-3.57	3.43	2.20
-73	0.014	-37.08	-30.08	0.00	-28	0.681	-3.34	3.66	2.32
-72	0.016	-35.92	-28.92	0.00	-27	0.699	-3.11	3.89	2.45
-71	0.018	-34.89	-27.89	0.00	-26	0.717	-2.89	4.11	2.58
-70	0.020	-33.98	-26.98	0.00	-25	0.735	-2.67	4.33	2.71
-69	0.025	-32.04	-25.04	0.00	-24	0.752	-2.48	4.52	2.83
-68	0.030	-30.46	-23.46	0.00	-23	0.769	-2.28	4.72	2.96
-67	0.035	-29.12	-22.12	0.01	-22	0.786	-2.09	4.91	3.10
-66	0.040	-27.96	-20.96	0.01	-21	0.803	-1.91	5.09	3.23
-65	0.045	-26.94	-19.94	0.01	-20	0.820	-1.72	5.28	3.37
-64	0.053	-25.51	-18.51	0.01	-19	0.835	-1.57	5.43	3.49
-63	0.061	-24.29	-17.29	0.02	-18	0.850	-1.41	5.59	3.62
-62	0.069	-23.22	-16.22	0.02	-17	0.865	-1.26	5.74	3.75
-61	0.077	-22.27	-15.27	0.03	-16	0.880	-1.11	5.89	3.88
-60	0.085	-21.41	-14.41	0.04	-15	0.895	-0.96	6.04	4.01
-59	0.099	-20.09	-13.09	0.05	-14	0.906	-0.86	6.14	4.11
-58	0.113	-18.94	-11.94	0.06	-13	0.917	-0.75	6.25	4.21
-57	0.127	-17.92	-10.92	0.08	-12	0.928	-0.65	6.35	4.32
-56	0.141	-17.02	-10.02	0.10	-11	0.939	-0.55	6.45	4.42
-55	0.155	-16.19	-9.19	0.12	-10	0.950	-0.45	6.55	4.52
-54	0.174	-15.19	-8.19	0.15	-9	0.956	-0.39	6.61	4.58
-53	0.193	-14.29	-7.29	0.19	-8	0.962	-0.34	6.66	4.64
-52	0.212	-13.47	-6.47	0.23	-7	0.968	-0.28	6.72	4.70
-51	0.231	-12.73	-5.73	0.27	-6	0.974	-0.23	6.77	4.75
-50	0.250	-12.04	-5.04	0.31	-5	0.980	-0.18	6.82	4.81
-49	0.272	-11.31	-4.31	0.37	-4	0.984	-0.14	6.86	4.85
-48	0.294	-10.63	-3.63	0.43	-3	0.988	-0.10	6.90	4.89
-47	0.316	-10.01	-3.01	0.50	-2	0.992	-0.07	6.93	4.93
-46	0.338	-9.42	-2.42	0.57	-1	0.996	-0.03	6.97	4.97
					0	1.000	0.00	7.00	5.01

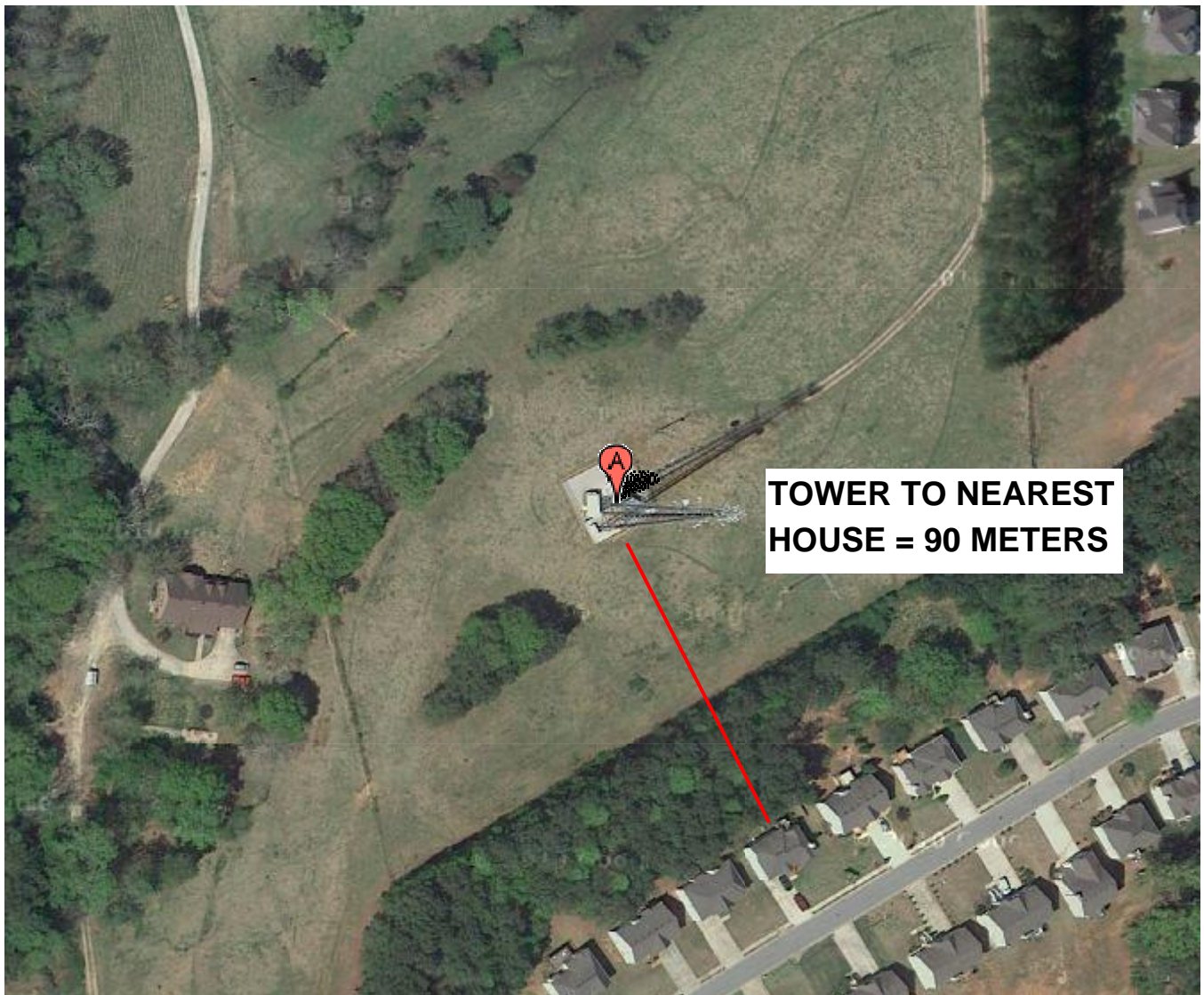


CL-FM Log-periodic
FM

7.0 dBd (9.15 dBi)
Vertical polarization

Vertical radiation pattern

Angle	Field	Rel.dB	dBd	PwrMult	Angle	Field	Rel.dB	dBd	PwrMult
0	1.000	0.00	7.00	5.01	45	0.360	-8.87	-1.87	0.65
1	0.996	-0.03	6.97	4.97	46	0.338	-9.42	-2.42	0.57
2	0.992	-0.07	6.93	4.93	47	0.316	-10.01	-3.01	0.50
3	0.988	-0.10	6.90	4.89	48	0.294	-10.63	-3.63	0.43
4	0.984	-0.14	6.86	4.85	49	0.272	-11.31	-4.31	0.37
5	0.980	-0.18	6.82	4.81	50	0.250	-12.04	-5.04	0.31
6	0.974	-0.23	6.77	4.75	51	0.231	-12.73	-5.73	0.27
7	0.968	-0.28	6.72	4.70	52	0.212	-13.47	-6.47	0.23
8	0.962	-0.34	6.66	4.64	53	0.193	-14.29	-7.29	0.19
9	0.956	-0.39	6.61	4.58	54	0.174	-15.19	-8.19	0.15
10	0.950	-0.45	6.55	4.52	55	0.155	-16.19	-9.19	0.12
11	0.939	-0.55	6.45	4.42	56	0.141	-17.02	-10.02	0.10
12	0.928	-0.65	6.35	4.32	57	0.127	-17.92	-10.92	0.08
13	0.917	-0.75	6.25	4.21	58	0.113	-18.94	-11.94	0.06
14	0.906	-0.86	6.14	4.11	59	0.099	-20.09	-13.09	0.05
15	0.895	-0.96	6.04	4.01	60	0.085	-21.41	-14.41	0.04
16	0.880	-1.11	5.89	3.88	61	0.077	-22.27	-15.27	0.03
17	0.865	-1.26	5.74	3.75	62	0.069	-23.22	-16.22	0.02
18	0.850	-1.41	5.59	3.62	63	0.061	-24.29	-17.29	0.02
19	0.835	-1.57	5.43	3.49	64	0.053	-25.51	-18.51	0.01
20	0.820	-1.72	5.28	3.37	65	0.045	-26.94	-19.94	0.01
21	0.803	-1.91	5.09	3.23	66	0.040	-27.96	-20.96	0.01
22	0.786	-2.09	4.91	3.10	67	0.035	-29.12	-22.12	0.01
23	0.769	-2.28	4.72	2.96	68	0.030	-30.46	-23.46	0.00
24	0.752	-2.48	4.52	2.83	69	0.025	-32.04	-25.04	0.00
25	0.735	-2.67	4.33	2.71	70	0.020	-33.98	-26.98	0.00
26	0.717	-2.89	4.11	2.58	71	0.018	-34.89	-27.89	0.00
27	0.699	-3.11	3.89	2.45	72	0.016	-35.92	-28.92	0.00
28	0.681	-3.34	3.66	2.32	73	0.014	-37.08	-30.08	0.00
29	0.663	-3.57	3.43	2.20	74	0.012	-38.42	-31.42	0.00
30	0.645	-3.81	3.19	2.09	75	0.010	-40.00	-33.00	0.00
31	0.628	-4.03	2.97	1.98	76	0.010	-40.00	-33.00	0.00
32	0.612	-4.26	2.74	1.88	77	0.010	-40.00	-33.00	0.00
33	0.595	-4.50	2.50	1.78	78	0.010	-40.00	-33.00	0.00
34	0.579	-4.75	2.25	1.68	79	0.010	-40.00	-33.00	0.00
35	0.562	-5.00	2.00	1.59	80	0.010	-40.00	-33.00	0.00
36	0.544	-5.29	1.71	1.48	81	0.010	-40.00	-33.00	0.00
37	0.525	-5.59	1.41	1.38	82	0.010	-40.00	-33.00	0.00
38	0.507	-5.90	1.10	1.29	83	0.010	-40.00	-33.00	0.00
39	0.488	-6.22	0.78	1.20	84	0.010	-40.00	-33.00	0.00
40	0.470	-6.56	0.44	1.11	85	0.010	-40.00	-33.00	0.00
41	0.448	-6.97	0.03	1.01	86	0.010	-40.00	-33.00	0.00
42	0.426	-7.41	-0.41	0.91	87	0.010	-40.00	-33.00	0.00
43	0.404	-7.87	-0.87	0.82	88	0.010	-40.00	-33.00	0.00
44	0.382	-8.36	-1.36	0.73	89	0.010	-40.00	-33.00	0.00
					90	0.010	-40.00	-33.00	0.00



**EXHIBIT E1E
AERIAL MAP OF SITE
SHOWING
CLEARANCE TO
NEAREST HOUSE**

Imagery ©2011 DigitalGlobe, USDA Farm Service Agency, GeoEye, U.S. Geological Survey -

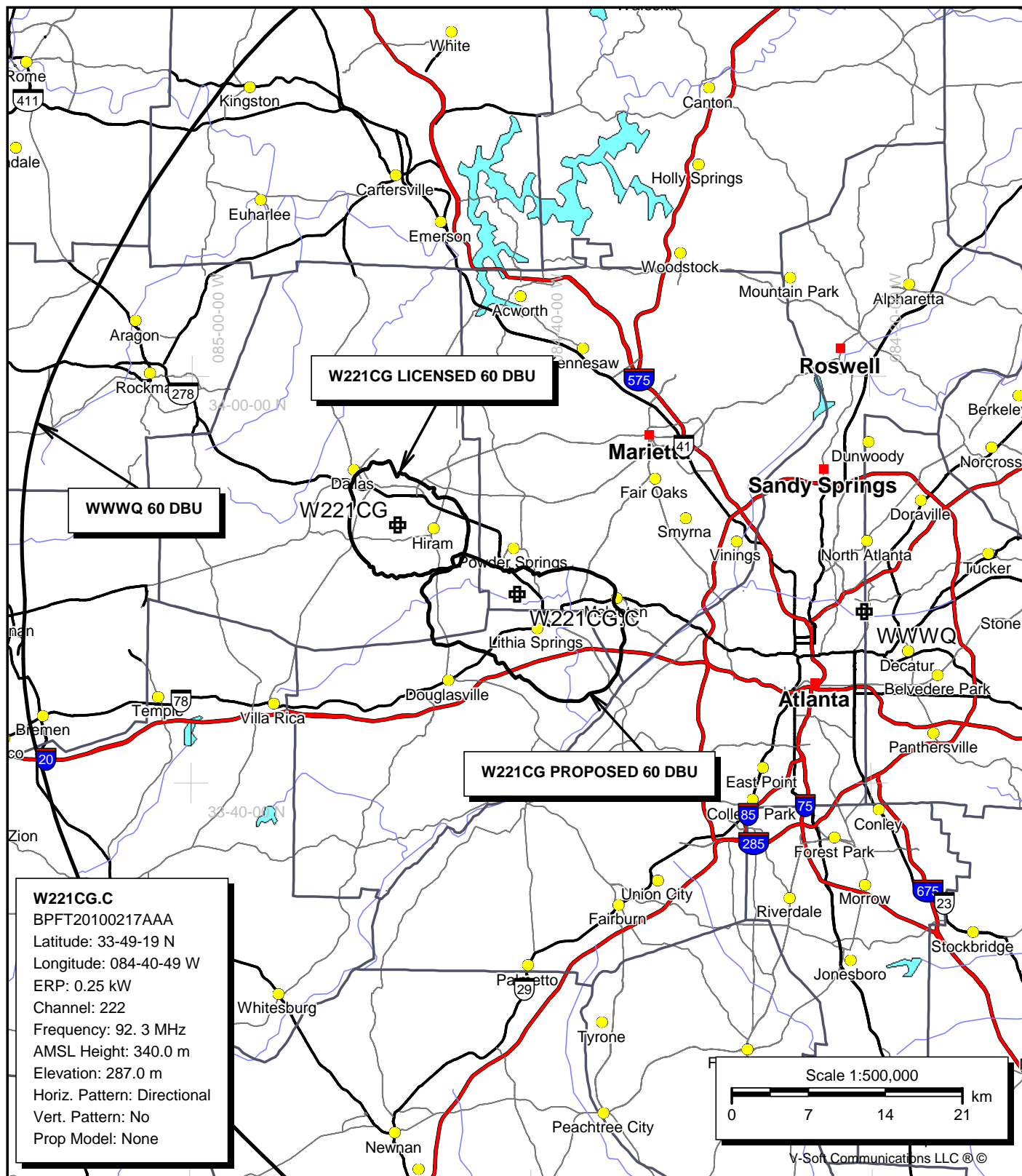


EXHIBIT E2

W221CG PROPOSED - LICENSED AND WWWQ 60 DBU CONTOURS

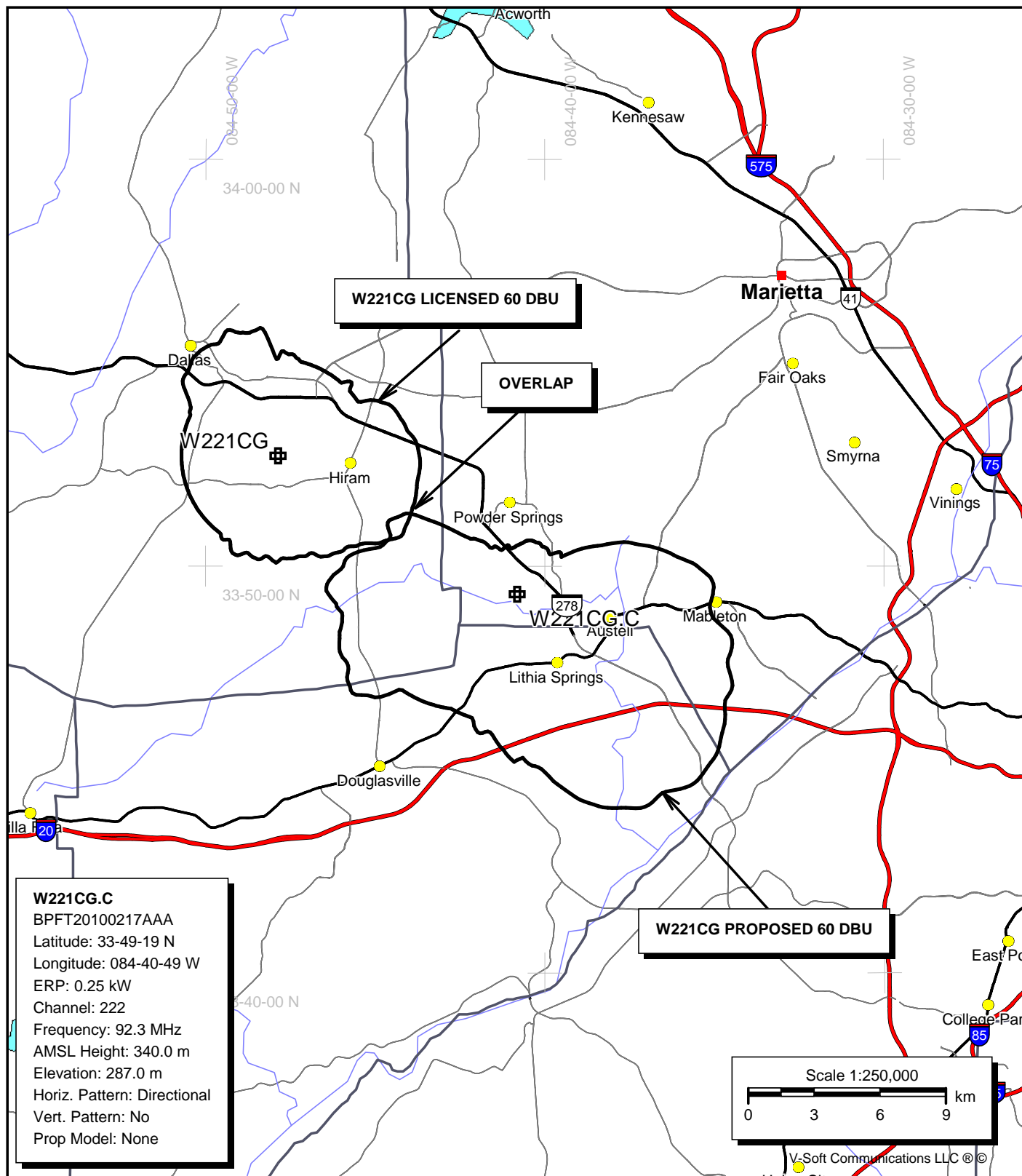


EXHIBIT E2A

221CG PROPOSED AND LICENSED 60 DBU CONTOURS OVERLAP

E3 HAAT AND CONTOUR TABULATION

N. Lat. = 334919.0 W. Lng. = 844049.0
HAAT and Distance to Contour,
V-Soft 3-16 km, 131 pts Method - FCC 30 SEC

Azi.	AV EL	HAAT	ERP kW	dBk	60-F5
000	293.0	47.0	0.0008	-30.75	2.21
030	279.7	60.3	0.0008	-30.75	2.46
060	286.1	53.9	0.0114	-19.41	4.43
090	273.2	66.8	0.1222	-9.13	8.90
120	268.0	72.0	0.2406	-6.19	10.93
150	258.3	81.7	0.2111	-6.75	11.23
180	292.0	48.0	0.1267	-8.97	7.53
210	335.8	4.2	0.1289	-8.90	6.00
240	294.2	45.8	0.2406	-6.19	8.73
270	292.8	47.2	0.2111	-6.75	8.58
300	291.3	48.7	0.0776	-11.10	6.71
330	296.6	43.4	0.0015	-28.18	2.43

Ave El= 288.42 M HAAT= 51.58 M AMSL= 340 M

ASR Registration Search

Registration 1018983**E4** [Map Registration](#)**Registration Detail**

Reg Number	1018983	Status	Constructed
File Number	A0710196	Constructed	09/18/1992
FAA Study	2010-ASO-6308-OE	EMI	No
FAA Issue Date	12/30/2010	NEPA	No

Antenna Structure

Structure Type MAST - Mast

Location (in NAD83 Coordinates)

Lat/Long 33-49-19.4 N 084-40-48.8 W 5300 HIRAM-LITHIA SPRINGS RD SW

City, State POWDER SPRINGS , GA

Center of
AM Array**Heights (meters)**

Elevation of Site Above Mean Sea Level	Overall Height Above Ground (AGL)
286.8	80.5
Overall Height Above Mean Sea Level	Overall Height Above Ground w/o Appurtenances
367.3	76.2

Painting and Lighting Specifications

FAA Chapters 4, 8, 12

Paint and Light in Accordance with FAA Circular Number 70/7460-1K

Owner & Contact Information

FRN	0003800307	Licensee ID	L00270093
-----	------------	-------------	-----------

OwnerVerizon Wireless (VAW) LLC
Attention To: Regulatory
1120 Sanctuary Pkwy, #150 GASA5REG
Alpharetta , GA 30009-7630P: (770)797-1070
E: Network.Regulatory@VerizonWireless.com**Contact**Janjua , Jerri L
1120 Sanctuary Pkwy, #150 GASA5REG
Alpharetta , GA 30009-7630P: (770)797-1070
E: Network.Regulatory@VerizonWireless.com**Last Action Status**

Status	Constructed	Received	01/05/2011
Purpose	Notification	Entered	01/05/2011
Mode	Interactive		

Related Applications

01/05/2011	A0710195 - Modification (MD)
01/05/2011	A0710196 - Notification (NT)
12/05/2006	A0529793 - Admin Update (AU)
	Related applications (11)