

DELAUDER COMMUNICATIONS, INC.

P.O. Box 1095
Ashburn, Virginia 20146-1095
(703) 299-9222

ENGINEERING REPORT

Lancaster, CA, Minor Change to 294D

ENGINEERING STATEMENT

All required protections are met by contour non-overlap pursuant to Section 74.1204, with the exception of protection to Lancaster, CA stations KGMX 292A (License and CP) and K296GX (CP). KGMX and K296GX are protected, as discussed below.

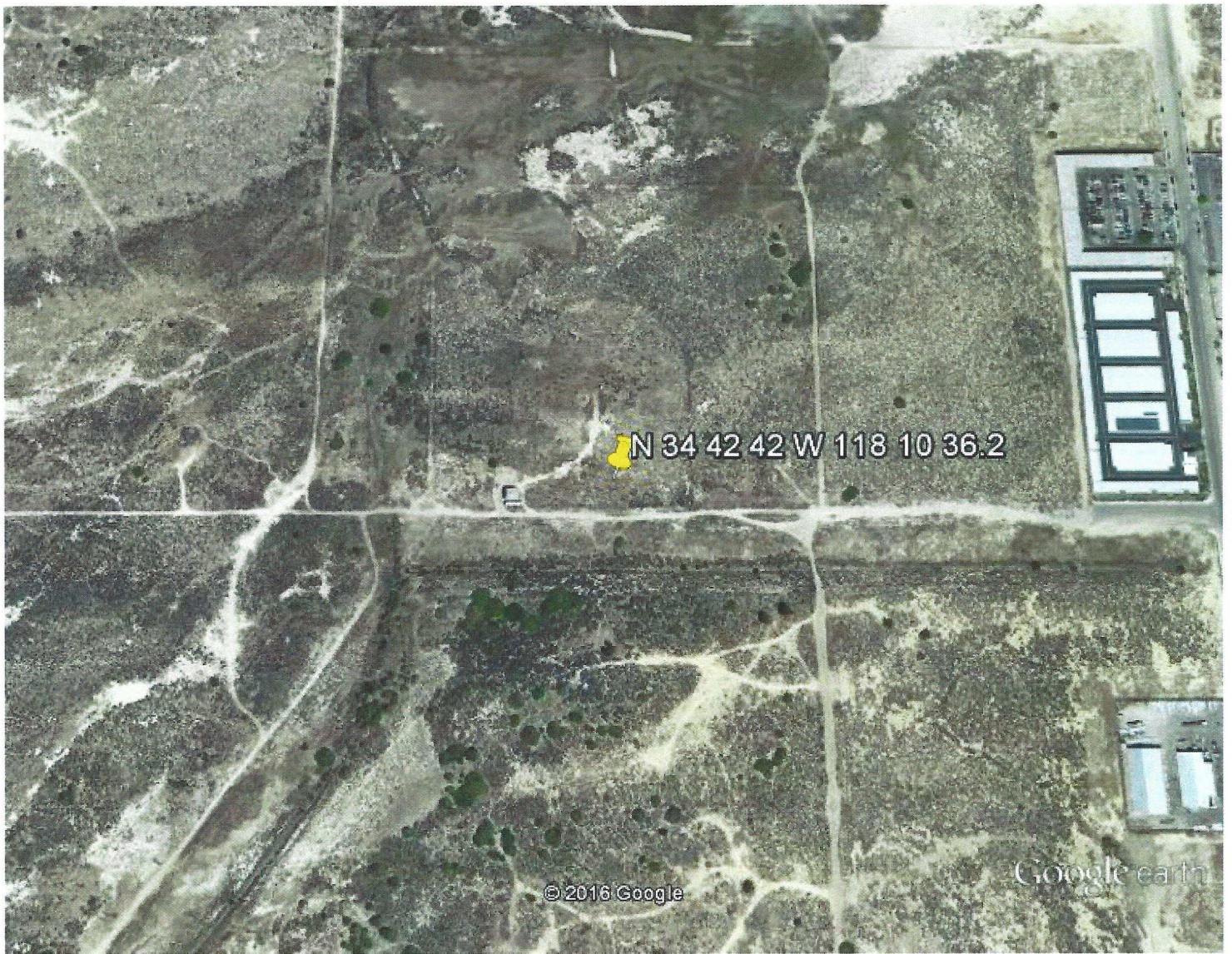
PROTECTION TO KGMX AND K296GX

KGMX (292A) and K296GX (296D) are second adjacent-channel stations to the proposed channel 294D translator facility. The 60 dBu F50,50 protected service contour of each station extends well beyond the 294D transmitter site. Using the well-established *Living Way Ministries* Methodology, no actual interference to any population is predicted to exist to KGMX or K296GX.

Note that a rule waiver of Section 74.1204 for this second and third adjacent-channel protection using the well-established *Living Way Ministries* Methodology is respectfully requested if such a rule waiver is deemed necessary for protection to any station.

The F50,50 signal strength from KGMX (licensed and authorized) at the proposed 294D transmitter site is greater than 75 dBu (the “desired” signal for KGMX). The F50,50 signal strength from K296GX at the proposed 294D transmitter site is greater than 110 dBu (the “desired” signal for K296GX). The second/third adjacent-channel protection is an undesired-to-desired (“U/D”) dB signal strength ratio of 40:1. Therefore, predicted interference to KGMX and K296GX is a 294D signal of greater than or equal to 115 dBu.

The 115 dBu signal based on a free space field determination is predicted to extend out to 198 meters from the proposed 294D transmitter site. As demonstrated by the attached aerial photo of the translator site, there are no homes or major roads located within this distance. Therefore, pursuant to Section 74.1204(d) of the FCC Rules, KGMX and K296GX are adequately protected by the proposed facility.



Google earth

feet 1000
meters 400

