

TECHNICAL EXHIBIT  
DTV APPLICATION FOR MODIFICATION OF CONSTRUCTION PERMIT  
STATION WUNW(DT)  
CANTON, NORTH CAROLINA  
CH 27    7 KW    474 M

Technical Narrative

This Technical Exhibit supports an application for digital television (DTV) station WUNW(DT) for its DTV operation at Canton, North Carolina. This application requests a modification of construction permit for WUNW(DT) digital television operation on channel 27 at Canton with a non-directional effective radiated power of 7 kilowatts. WUNW(DT) intends to use a Jampro JTZ non-directional transmitting antenna for digital operation.

These are the same operating parameters that were approved in STA File No. BDSTA-20100713AGM and pursuant to which WUNW is currently operating. It should be noted that the parameters contemplated herein represent no loss of service, as WUNW was never on the air as an analog facility nor has its digital operation ever encompassed a larger service area.

The facility will be constructed on an existing tower that will not require any additional Section 106 environmental review process. Using the Commission's TOWAIR program, the applicant confirmed that the tower, which will be less than 200 feet tall, does not require notification to the FAA nor registration in the Commission's ASR database.

Proposed Facilities

The proposed DTV transmitter site will be located at an existing tower. Therefore, the proposed site location is:

35° 34' 06" North Latitude  
82° 54' 25" West Longitude

A sketch of antenna and pertinent elevations are included as Figure 1.

Figure 2 is a map showing the proposed DTV predicted coverage contour. The extent of the contours have been calculated using the normal FCC prediction method. The Canton city limits were derived from information contained in the 2000 U.S. Census of Population and Housing.

Population Served

The herein proposed WUNW(DT) facility is predicted to serve 344,632 persons, based upon the 2000 Census.

### Allocation Considerations

The proposed WUNW(DT) Channel 27 facility meets the requirements of Section 73.623 of the FCC Rules concerning predicted interference to other Appendix B DTV allotments. Longley-Rice interference analyses were conducted pursuant to the requirements of the FCC Rules; OET Bulletin No. 69; and published FCC guidelines for preparation of such interference analyses. The Longley-Rice interference analyses were conducted using the software developed by du Treil, Lundin & Rackley, Inc. based on the FCC published software routines.<sup>1</sup> Stations selected for analysis were determined pursuant to the distance requirements outlined in the FCC DTV Processing Guidelines Public Notice. The results of the interference analyses for the proposed WUNW(DT) facility are summarized herein at Figure 3. As indicated therein, the proposed facility will meet the 0.5% criterion outlined in the FCC Rules and published guidelines with respect to all considered stations<sup>2</sup>.

### Radiofrequency Electromagnetic Field Exposure

The proposed WUNW-DT facilities were evaluated in terms of potential radiofrequency electromagnetic field exposure at ground level to workers and the general public. The radiation center for the proposed WUNW-DT antenna is

---

<sup>1</sup> The duTreil, Lundin & Rackley, Inc. DTV interference analysis program is based on the program and procedures outlined by the FCC in the Sixth Report and Order; subsequent Memorandum Opinion and Order; and FCC OET Bulletin No. 69. A nominal grid size resolution of 2 km was employed.

<sup>2</sup> Interference analysis results reflect the net change in interference to a given station considering the interference predicted to occur from all other stations (i.e. "masking") including the allotment facility for WUNW(DT). This properly reflects the net interference change for determining compliance with the FCC 0.5% *de minimis* standard.

located 21 meters above ground level. The effective radiated power is 7 kilowatts. A "worst-case" relative field value of 0.5 is assumed for the antenna's downward radiation. The calculated power density at a point 2 meters above ground level is less than  $0.14 \text{ mW/cm}^2$ . This is 38 percent of the Commission's recommended limit of  $0.37 \text{ mW/cm}^2$  for channel 27 for an "uncontrolled" environment.

Access to the transmitting site will be restricted and appropriately marked with warning signs. In the event that workers or other authorized personnel enter restricted areas or climb the tower, appropriate measures will be taken to assure worker safety with respect to radio frequency radiation exposure. Such measures include reducing the average exposure by spreading out the work over a longer period of time, wearing "accepted" RFR protective clothing and/or RFR exposure monitors or scheduling work when the stations are at reduced power or shut down.

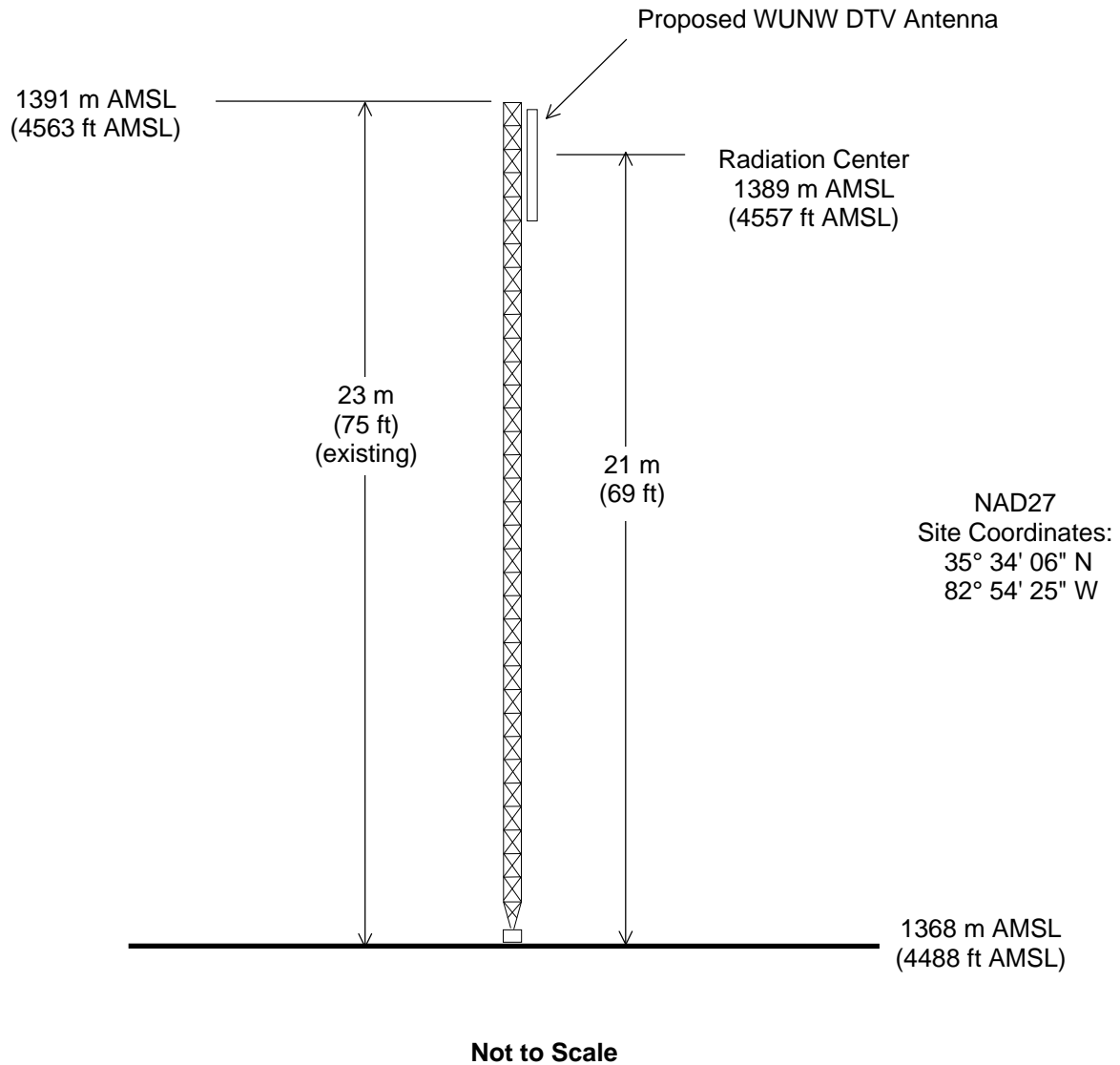
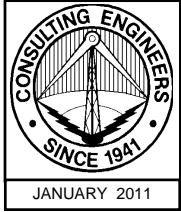
It is noted that this statement only addresses the potential for radiofrequency electromagnetic field exposure. All other aspects of the environmental processing analysis will be or already have been provided to the FCC by the tower owner.

Charles Cooper

du Treil, Lundin & Rackley, Inc.  
201 Fletcher Avenue  
Sarasota, Florida 32437  
941.329.6000

January 5, 2011

Figure 1

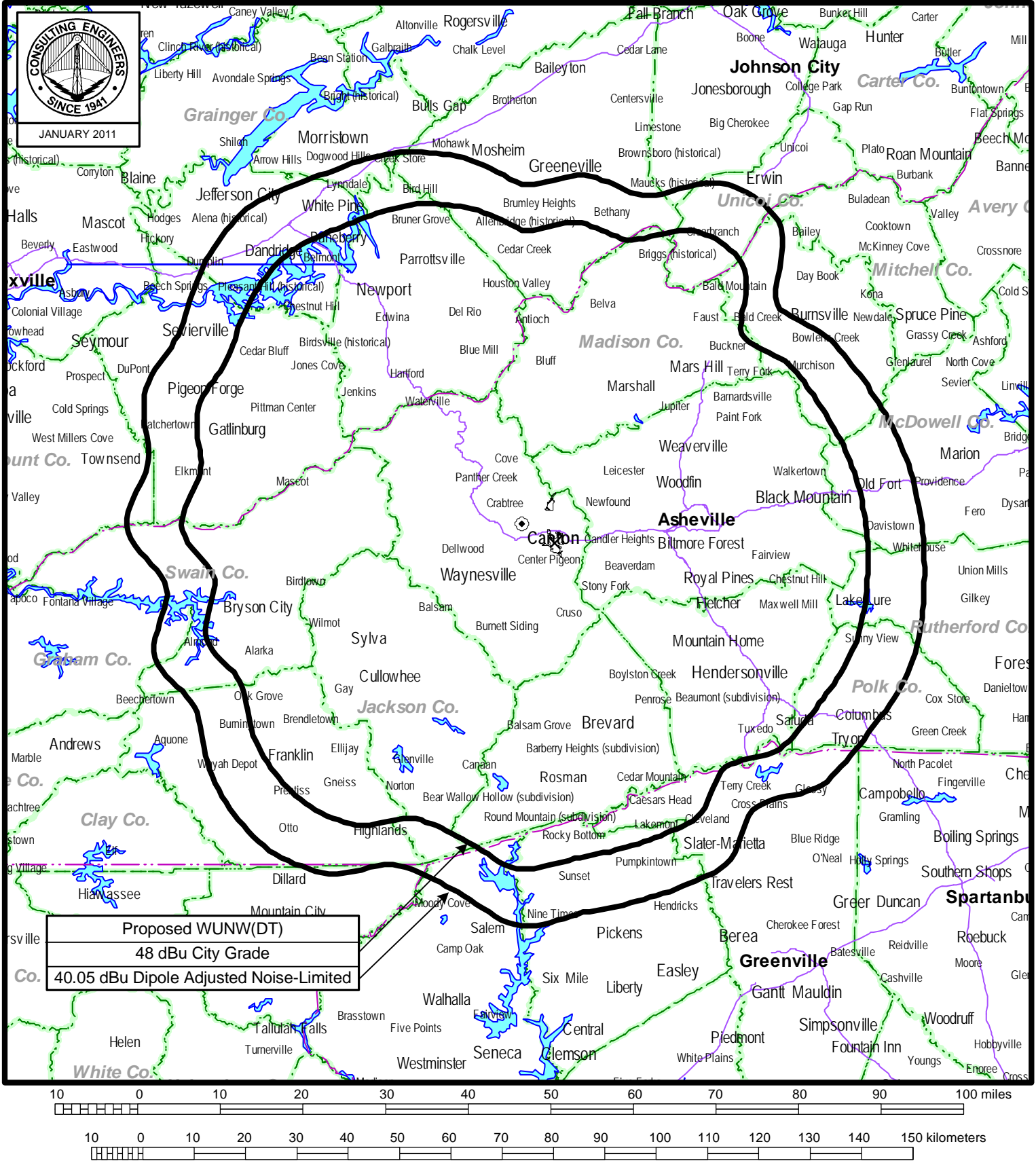


## ANTENNA AND SUPPORTING STRUCTURE

DTV STATION WUNW  
CANTON, NORTH CAROLINA  
CH 27 7 KW 474 M

du Treil, Lundin & Rackley, Inc. Sarasota, Florida

**Figure 2**



## **PREDICTED COVERAGE CONTOURS**

**STATION WUNW(DT)**

**CANTON, NORTH CAROLINA**

**CH 27 7 KW 474 M**

du Treil, Lundin & Rackley, Inc Sarasota, Florida

**Figure 3**

Percent allowed new interference: 0.500  
Percent allowed new interference to non Class A LPTV: 2.000  
TW Census data selected 2000  
Data Base Selected  
/export/home/cdb/pt\_tvdb.sff

WARNING WARNING WARNING

The following list of station records has been excluded from the analysis due to the fact that they have the same state, city and channel as the proposed station - This could cause the program to not find a potential fail situation

You can force the program to include these records by setting the state of the proposed record to ZZ and re-running the analysis

WUNW	27 CANTON	NC BMPEDT	20100826ADA
WUNW	27 CANTON	NC BMPEDT	20080929AHM
WUNW	27 CANTON	NC BMPEDT	20100826ADA

TV INTERFERENCE and SPACING ANALYSIS PROGRAM

Date: 01-05-2011 Time: 10:49:10

Record Selected for Analysis

WUNW	USERRECORD-01	CANTON	NC US
Channel	27 ERP 7. kW	HAAT 470. m	RCAMSL 01389 m
Latitude	035-34-06	Longitude	0082-54-25
Status	APP	Zone 2	Border
Site number:	01		
Last update	Cutoff date	Docket	
Comments			
Applicant			

Cell Size for Service Analysis 2.0 km/side

Distance Increments for Longley-Rice Analysis 1.00 km

Facility (site # 01) meets maximum height/power limits

Site number	1			
Azimuth	ERP	HAAT	41.0 dBu F(50,90)	
(Deg)	(kW)	(m)	(km)	
0.0	7.000	287.2	62.9	
45.0	7.000	386.7	68.9	
90.0	7.000	488.5	73.9	
135.0	7.000	460.4	72.9	
180.0	7.000	503.4	74.4	
225.0	7.000	565.6	76.9	
270.0	7.000	477.0	73.5	
315.0	7.000	587.3	77.8	

Evaluation toward Class A Stations from site # 01

No Spacing violations or contour overlap  
to Class A stations from site # 01

Class A Evaluation Complete

### Figure 3

SPACING VIOLATION FOUND BETWEEN STATION

WUNW      27 CANTON                          NC USERRECORD01                          Site # 01

and station

SHORT TO: WATE-TV 26 KNOXVILLE TN BMLCDT 20041203AEG  
036-00-13 0083-56-34  
Req. separation => 24.0 <= 110.0 Actual separation 105.4 Short 4.6( 81.4) km

SHORT TO: WCCB 27 CHARLOTTE NC BLCDT 20020227AAZ  
035-16- 1 0080-44- 5  
Req. separation 223.7 Actual separation 200.1 Short 23.6 km

SHORT TO: WKPT-TV 27 KINGSPORT TN BMPCDT 20050303AAJ  
036-25-54 0082-08-15  
Req. separation 223.7 Actual separation 118.3 Short 105.4 km

## LANDMOBILE SPACING VIOLATIONS FOUND

NONE from Site # 01

Checks to Site Number 01

Proposed facility OK to FCC Monitoring Stations

Proposed facility OK toward West Virginia quiet zone

Proposed facility OK toward Table Mountain

Proposed facility is beyond the Canadian coordination distance

Proposed facility is beyond the Mexican coordination distance

Proposed station is OK toward AM broadcast stations

\*\*\*\*\*

## Start of Interference Analysis

Channel	Proposed Station Call	City/State	ARN
27	WUNW	CANTON NC	USERRECORD01

Stations Potentially Affected by	Proposed Station
1	2
3	4
5	6
7	8
9	10
11	12
13	14
15	16
17	18
19	20
21	22
23	24
25	26
27	28
29	30
31	32
33	34
35	36
37	38
39	40
41	42
43	44
45	46
47	48
49	50
51	52
53	54
55	56
57	58
59	60
61	62
63	64
65	66
67	68
69	70
71	72
73	74
75	76
77	78
79	80
81	82
83	84
85	86
87	88
89	90
91	92
93	94
95	96
97	98
99	100

Chan	Call	City/State	Dist(km)	Status	Application	Ref. No.
24	WLNN-LP	BOONE NC	131.1	LIC	BLTTL	19970516JB
25	WKPT-LP	KINGSPORT TN	110.3	APP	BSTA	20060331AXC
25	WKPT-LP	KINGSPORT TN	110.3	LIC	BLTT	19871119IB
26	WATE-TV	KNOXVILLE TN	105.2	LIC	BMLCDT	20041203AEG
27	WAGA-TV	ATLANTA GA	236.1	LIC	BLCDT	20060728AEL
27	WCCB	CHARLOTTE NC	199.6	LIC	BLCDT	20020227AAZ
27	WLFL	RALEIGH NC	395.8	CP MOD	BMPCDT	20080620AJP
27	WOUB-TV	ATHENS OH	421.7	LIC	BLEDT	20030411ABC
27	WTNB-CA	CLEVELAND TN	183.7	LIC	BLTT	19971027JD
27	WKPT-TV	KINGSPORT TN	118.3	CP MOD	BMPCDT	20050303AAJ
27	WKRN-TV	NASHVILLE TN	357.6	LIC	BLCDT	20090624AB



Figure 3

28 WGTB-LP CHARLOTTE NC 204.2 APP BDFCDTA 20091211ACU

%%%

# Analysis of Interference to Affected Station 1

## Analysis of current record

Channel	Call	City/State	Application	Ref. No.
24	WLNN-LP	BOONE NC	BLTTL	-19970516JB

## Stations Potentially Affecting This Station

Chan	Call	City/State	Dist(km)	Status	Application	Ref. No.
17	WUNE-TV	LINVILLE NC	22.7	LIC	BLEDT	-20091118ADR
22	WCNC-TV	CHARLOTTE NC	110.0	LIC	BLCDT	-20031211ABN
22	WCNC-TV	CHARLOTTE NC	110.0	CP	BPCDT	-20080617AEH
23	WBTV	CHARLOTTE NC	107.6	LIC	BLCDT	-19991025AEB
24	WNEG-TV	TOCCOA GA	285.2	APP	BPCDT	-20100827AAS
24	WNEG-TV	TOCCOA GA	235.0	LIC	BLCDT	-20090127AAN
24	WKPI-TV	PIKEVILLE KY	137.5	LIC	BLEDT	-20020313ABL
24	WDTT-LP	KNOXVILLE TN	203.8	LIC	BLTTL	-20070731CPA
24	WDTT-LP	LENOIR CITY TN	203.8	APP	BSTA	-20070205AAI
24	WDRL-TV	DANVILLE VA	209.0	CP	BPCDT	-20080317AIL
25	WUNF-TV	ASHEVILLE NC	130.7	LIC	BLEDT	-20030401BAI
25	WUNF-TV	ASHEVILLE NC	130.7	CP	BPEDT	-20080619AEH
25	WUNF-TV	ASHEVILLE NC	130.7	CP MOD	BMPEDT	-20090511ANS
25	W25AY-D	JEFFERSON NC	31.7	LIC	BLDTT	-20100503ABO
27	WCCB	CHARLOTTE NC	138.9	LIC	BLCDT	-20020227AAZ
27	WKPT-TV	KINGSPORT TN	44.3	CP MOD	BMPEDT	-20050303AAJ
31	WXII-TV	WINSTON-SALEM NC	120.4	LIC	BLCDT	-20050627AAU
32	WUNL-TV	WINSTON-SALEM NC	120.6	CP MOD	BMPEDT	-20091026ACL
32	WUNL-TV	WINSTON-SALEM NC	120.6	LIC	BLEDT	-20020717AAH
32	WSBN-TV	NORTON VA	110.0	LIC	BLEDT	-20030428ABR
38	WEMT	GREENEVILLE TN	43.1	CP	BPCDT	-20090521ADA
38	WEMT	GREENEVILLE TN	93.6	LIC	BLCDT	-20050606AHR
39	WMYT-TV	ROCK HILL SC	109.1	LIC	BLCDT	-20090619ACX
27	WUNW	CANTON NC	131.1	APP	USERRECORD-01	
25	WUNF-TV	ASHEVILLE NC		CP MOD	BMPEDT	-20090511ANS

Proposed station is beyond the site to  
nearest cell evaluation distance

%%%

# Analysis of Interference to Affected Station 2

## Analysis of current record

Channel	Call	City/State	Application	Ref. No.
25	WKPT-LP	KINGSPORT TN	BSTA	-20060331AXC

## Stations Potentially Affecting This Station

Chan	Call	City/State	Dist(km)	Status	Application	Ref. No.
17	WUNE-TV	LINVILLE NC	84.2	LIC	BLEDT	-20091118ADR
17	WKOP-TV	KNOXVILLE TN	136.2	LIC	BLEDT	-20040405ACC
23	WPXK-TV	JELLICO TN	134.7	CP	BPCDT	-20080620AGZ
24	WKPI-TV	PIKEVILLE KY	84.5	LIC	BLEDT	-20020313ABL
25	WATL	ATLANTA GA	341.6	LIC	BLCDT	-20020716AAH
25	DW24BT	LEXINGTON KY	232.5	APP	BPTTL	-20011010AAH
25	WUNF-TV	ASHEVILLE NC	123.3	LIC	BLEDT	-20030401BAI
25	WUNF-TV	ASHEVILLE NC	123.3	CP	BPEDT	-20080619AEH
25	WUNF-TV	ASHEVILLE NC	123.3	CP MOD	BMPEDT	-20090511ANS
25	WUNF-TV	ASHEVILLE NC	134.5	CP MOD	BMPEDT	-20090511ANS
25	WJJV-LP	ASHEVILLE NC	111.4	LIC	BLTTL	-19990120JB
25	WUNC-TV	CHAPEL HILL NC	315.5	LIC	BLEDT	-20090824ABP
25	WDMC-LP	CHARLOTTE NC	222.2	CP	BPTTL	-20060323ABK
25	W25AY-D	JEFFERSON NC	98.4	LIC	BLDTT	-20100503ABO

**Figure 3**

25	WTVF-DR	NASHVILLE TN	376.9	APP	BPFS	-20100830ACL
27	WKPT-TV	KINGSPORT TN	41.6	CP MOD	BMPCDT	-20050303AAJ
32	WSBN-TV	NORTON VA	41.4	LIC	BLEDT	-20030428ABR
40	WHKY-TV	HICKORY NC	143.4	CP MOD	BMPCDT	-20090310ADE
40	WHKY-TV	HICKORY NC	143.4	CP	BPCDT	-20080619AAH
40	WHKY-TV	HICKORY NC	143.2	LIC	BLCDT	-20060630ABW
40	WLFV	BLUEFIELD WV	140.8	LIC	BLCDT	-20090622ADS
27	WUNW	CANTON NC	110.3	APP	USERRECORD-01	
40	WHKY-TV	HICKORY NC		CP MOD	BMPCDT	-20090310ADE

Proposed station is beyond the site to  
nearest cell evaluation distance

#####

#### Analysis of Interference to Affected Station 3

##### Analysis of current record

Channel	Call	City/State	Application	Ref. No.
25	WKPT-LP	KINGSPORT TN	BLTT	-19871119IB

##### Stations Potentially Affecting This Station

Chan	Call	City/State	Dist(km)	Status	Application	Ref. No.
17	WUNE-TV	LINVILLE NC	84.2	LIC	BLEDT	-20091118ADR
17	WKOP-TV	KNOXVILLE TN	136.2	LIC	BLEDT	-20040405ACC
23	WPXK-TV	JELICO TN	134.7	CP	BPCDT	-20080620AGZ
24	WKPI-TV	PIKEVILLE KY	84.5	LIC	BLEDT	-20020313ABL
25	WATL	ATLANTA GA	341.6	LIC	BLCDT	-20020716AAH
25	WUNF-TV	ASHEVILLE NC	123.3	LIC	BLEDT	-20030401BAI
25	WUNF-TV	ASHEVILLE NC	123.3	CP	BPEDT	-20080619AEH
25	WUNF-TV	ASHEVILLE NC	123.3	CP MOD	BMPEDT	-20090511ANS
25	WUNF-TV	ASHEVILLE NC	134.5	CP MOD	BMPEDT	-20090511ANS
25	WJTV-LP	ASHEVILLE NC	111.4	LIC	BLTTL	-19990120JB
25	WUNC-TV	CHAPEL HILL NC	315.5	LIC	BLEDT	-20090824ABP
25	WDMC-LP	CHARLOTTE NC	222.2	CP	BPTTL	-20060323ABK
25	W25AY-D	JEFFERSON NC	98.4	LIC	BLDTT	-20100503ABO
25	WTVF-DR	NASHVILLE TN	376.9	APP	BPFS	-20100830ACL
27	WKPT-TV	KINGSPORT TN	41.6	CP MOD	BMPCDT	-20050303AAJ
32	WSBN-TV	NORTON VA	41.4	LIC	BLEDT	-20030428ABR
40	WHKY-TV	HICKORY NC	143.4	CP MOD	BMPCDT	-20090310ADE
40	WHKY-TV	HICKORY NC	143.4	CP	BPCDT	-20080619AAH
40	WHKY-TV	HICKORY NC	143.2	LIC	BLCDT	-20060630ABW
40	WLFV	BLUEFIELD WV	140.8	LIC	BLCDT	-20090622ADS
27	WUNW	CANTON NC	110.3	APP	USERRECORD-01	
40	WHKY-TV	HICKORY NC		CP MOD	BMPCDT	-20090310ADE

Proposed station is beyond the site to  
nearest cell evaluation distance

#####

#### Analysis of Interference to Affected Station 4

##### Analysis of current record

Channel	Call	City/State	Application	Ref. No.
26	WATE-TV	KNOXVILLE TN	BMLCDT	-20041203AEG

##### Stations Potentially Affecting This Station

Chan	Call	City/State	Dist(km)	Status	Application	Ref. No.
25	WUNF-TV	ASHEVILLE NC	124.8	LIC	BLEDT	-20030401BAI
25	WUNF-TV	ASHEVILLE NC	124.8	CP	BPEDT	-20080619AEH
25	WUNF-TV	ASHEVILLE NC	124.8	CP MOD	BMPEDT	-20090511ANS
25	WUNF-TV	ASHEVILLE NC	81.3	CP MOD	BMPEDT	-20090511ANS
26	WTJP-TV	GADSDEN AL	333.7	LIC	BLCDT	-20050511AAF
26	WTJP-TV	GADSDEN AL	333.7	CP	BPCDT	-20080616AEF

**Figure 3**

26	WKAS	ASHLAND KY	297.3	LIC	BLEDT	-20020404ABM
26	WLKY-TV	LOUISVILLE KY	311.5	LIC	BLCDDT	-20030129AFL
26	WBDT	SPRINGFIELD OH	414.5	CP MOD	BMPCDDT	-20080619AKF
27	WKPT-TV	KINGSPORT TN	168.7	CP MOD	BMPCDDT	-20050303AAJ
27	WUNW	CANTON NC	105.2	APP	USERRECORD-01	

Total scenarios = 6

Result key: 1  
 Scenario 1 Affected station 4  
 Before Analysis

Results for: 26A TN KNOXVILLE BMLCDDT 20041203AEG LIC  
 HAAT 529.0 m, ATV ERP 930.0 kW

	POPULATION	AREA (sq km)
within Noise Limited Contour	1683760	43743.7
not affected by terrain losses	1466380	35287.8
lost to NTSC IX	0	0.0
lost to additional IX by ATV	27822	1279.6
lost to ATV IX only	27822	1279.6
lost to all IX	27822	1279.6

Potential Interfering Stations Included in above Scenario 1

25A NC ASHEVILLE	BLEDT	20030401BAI	LIC
26A AL GADSDEN	BLCDDT	20050511AAF	LIC
26A KY ASHLAND	BLEDT	20020404ABM	LIC
26A KY LOUISVILLE	BLCDDT	20030129AFL	LIC
27A TN KINGSPORT	BMPCDDT	20050303AAJ	CP

After Analysis

Results for: 26A TN KNOXVILLE BMLCDDT 20041203AEG LIC  
 HAAT 529.0 m, ATV ERP 930.0 kW

	POPULATION	AREA (sq km)
within Noise Limited Contour	1683760	43743.7
not affected by terrain losses	1466380	35287.8
lost to NTSC IX	0	0.0
lost to additional IX by ATV	27947	1307.7
lost to ATV IX only	27947	1307.7
lost to all IX	27947	1307.7

Potential Interfering Stations Included in above Scenario 1

25A NC ASHEVILLE	BLEDT	20030401BAI	LIC
26A AL GADSDEN	BLCDDT	20050511AAF	LIC
26A KY ASHLAND	BLEDT	20020404ABM	LIC
26A KY LOUISVILLE	BLCDDT	20030129AFL	LIC
27A TN KINGSPORT	BMPCDDT	20050303AAJ	CP
27A NC CANTON	USERRECORD01		APP

Percent new IX = 0.0087%

Result key: 2  
 Scenario 2 Affected station 4  
 Before Analysis

Results for: 26A TN KNOXVILLE BMLCDDT 20041203AEG LIC  
 HAAT 529.0 m, ATV ERP 930.0 kW

	POPULATION	AREA (sq km)
within Noise Limited Contour	1683760	43743.7
not affected by terrain losses	1466380	35287.8
lost to NTSC IX	0	0.0
lost to additional IX by ATV	33755	1472.2
lost to ATV IX only	33755	1472.2
lost to all IX	33755	1472.2

Potential Interfering Stations Included in above Scenario 2

25A NC ASHEVILLE	BLEDT	20030401BAI	LIC
------------------	-------	-------------	-----

**Figure 3**

26A AL GADSDEN	BPCDT	20080616AEF	CP
26A KY ASHLAND	BLEDT	20020404ABM	LIC
26A KY LOUISVILLE	BLCDT	20030129AFL	LIC
27A TN KINGSPORT	BMPCDT	20050303AAJ	CP

After Analysis

Results for: 26A TN KNOXVILLE BMLCDT 20041203AEG LIC  
HAAT 529.0 m, ATV ERP 930.0 kW

	POPULATION	AREA (sq km)
within Noise Limited Contour	1683760	43743.7
not affected by terrain losses	1466380	35287.8
lost to NTSC IX	0	0.0
lost to additional IX by ATV	33880	1500.2
lost to ATV IX only	33880	1500.2
lost to all IX	33880	1500.2

Potential Interfering Stations Included in above Scenario 2

25A NC ASHEVILLE	BLEDT	20030401BAI	LIC
26A AL GADSDEN	BPCDT	20080616AEF	CP
26A KY ASHLAND	BLEDT	20020404ABM	LIC
26A KY LOUISVILLE	BLCDT	20030129AFL	LIC
27A TN KINGSPORT	BMPCDT	20050303AAJ	CP
27A NC CANTON	USERRECORD01		APP

Percent new IX = 0.0087%

Result key: 3  
Scenario 3 Affected station 4  
Before Analysis

Results for: 26A TN KNOXVILLE BMLCDT 20041203AEG LIC  
HAAT 529.0 m, ATV ERP 930.0 kW

	POPULATION	AREA (sq km)
within Noise Limited Contour	1683760	43743.7
not affected by terrain losses	1466380	35287.8
lost to NTSC IX	0	0.0
lost to additional IX by ATV	27534	1271.6
lost to ATV IX only	27534	1271.6
lost to all IX	27534	1271.6

Potential Interfering Stations Included in above Scenario 3

25A NC ASHEVILLE	BPEDT	20080619AEH	CP
26A AL GADSDEN	BLCDT	20050511AAF	LIC
26A KY ASHLAND	BLEDT	20020404ABM	LIC
26A KY LOUISVILLE	BLCDT	20030129AFL	LIC
27A TN KINGSPORT	BMPCDT	20050303AAJ	CP

After Analysis

Results for: 26A TN KNOXVILLE BMLCDT 20041203AEG LIC  
HAAT 529.0 m, ATV ERP 930.0 kW

	POPULATION	AREA (sq km)
within Noise Limited Contour	1683760	43743.7
not affected by terrain losses	1466380	35287.8
lost to NTSC IX	0	0.0
lost to additional IX by ATV	27659	1299.7
lost to ATV IX only	27659	1299.7
lost to all IX	27659	1299.7

Potential Interfering Stations Included in above Scenario 3

25A NC ASHEVILLE	BPEDT	20080619AEH	CP
26A AL GADSDEN	BLCDT	20050511AAF	LIC
26A KY ASHLAND	BLEDT	20020404ABM	LIC
26A KY LOUISVILLE	BLCDT	20030129AFL	LIC
27A TN KINGSPORT	BMPCDT	20050303AAJ	CP
27A NC CANTON	USERRECORD01		APP

**Figure 3**

Percent new IX = 0.0087%

Result key: 4  
 Scenario 4 Affected station 4  
 Before Analysis

Results for: 26A TN KNOXVILLE BMLCDT 20041203AEG LIC  
 HAAT 529.0 m, ATV ERP 930.0 kW

	POPULATION	AREA (sq km)
within Noise Limited Contour	1683760	43743.7
not affected by terrain losses	1466380	35287.8
lost to NTSC IX	0	0.0
lost to additional IX by ATV	33467	1464.1
lost to ATV IX only	33467	1464.1
lost to all IX	33467	1464.1

Potential Interfering Stations Included in above Scenario 4

25A NC ASHEVILLE	BPEDT	20080619AEH	CP
26A AL GADSDEN	BPCDT	20080616AEF	CP
26A KY ASHLAND	BLEDT	20020404ABM	LIC
26A KY LOUISVILLE	BLCDT	20030129AFL	LIC
27A TN KINGSPORT	BMPCDT	20050303AAJ	CP

After Analysis

Results for: 26A TN KNOXVILLE BMLCDT 20041203AEG LIC  
 HAAT 529.0 m, ATV ERP 930.0 kW

	POPULATION	AREA (sq km)
within Noise Limited Contour	1683760	43743.7
not affected by terrain losses	1466380	35287.8
lost to NTSC IX	0	0.0
lost to additional IX by ATV	33592	1492.2
lost to ATV IX only	33592	1492.2
lost to all IX	33592	1492.2

Potential Interfering Stations Included in above Scenario 4

25A NC ASHEVILLE	BPEDT	20080619AEH	CP
26A AL GADSDEN	BPCDT	20080616AEF	CP
26A KY ASHLAND	BLEDT	20020404ABM	LIC
26A KY LOUISVILLE	BLCDT	20030129AFL	LIC
27A TN KINGSPORT	BMPCDT	20050303AAJ	CP
27A NC CANTON	USERRECORD01		APP

Percent new IX = 0.0087%

Result key: 5  
 Scenario 5 Affected station 4  
 Before Analysis

Results for: 26A TN KNOXVILLE BMLCDT 20041203AEG LIC  
 HAAT 529.0 m, ATV ERP 930.0 kW

	POPULATION	AREA (sq km)
within Noise Limited Contour	1683760	43743.7
not affected by terrain losses	1466380	35287.8
lost to NTSC IX	0	0.0
lost to additional IX by ATV	27541	1283.6
lost to ATV IX only	27541	1283.6
lost to all IX	27541	1283.6

Potential Interfering Stations Included in above Scenario 5

25A NC ASHEVILLE	BMPEDT	20090511ANS	CP
26A AL GADSDEN	BLCDT	20050511AAF	LIC
26A KY ASHLAND	BLEDT	20020404ABM	LIC
26A KY LOUISVILLE	BLCDT	20030129AFL	LIC
27A TN KINGSPORT	BMPCDT	20050303AAJ	CP

After Analysis

**Figure 3**

Results for: 26A TN KNOXVILLE BMLCDT 20041203AEG LIC

HAAT 529.0 m, ATV ERP 930.0 kW

	POPULATION	AREA (sq km)
within Noise Limited Contour	1683760	43743.7
not affected by terrain losses	1466380	35287.8
lost to NTSC IX	0	0.0
lost to additional IX by ATV	27666	1303.7
lost to ATV IX only	27666	1303.7
lost to all IX	27666	1303.7

Potential Interfering Stations Included in above Scenario 5

25A NC ASHEVILLE	BMPEDT	20090511ANS	CP
26A AL GADSDEN	BLCDT	20050511AAF	LIC
26A KY ASHLAND	BLEDT	20020404ABM	LIC
26A KY LOUISVILLE	BLCDT	20030129AFL	LIC
27A TN KINGSPORT	BMPCDT	20050303AAJ	CP
27A NC CANTON	USERRECORD01		APP

Percent new IX = 0.0087%

Result key: 6

Scenario 6 Affected station 4

Before Analysis

Results for: 26A TN KNOXVILLE BMLCDT 20041203AEG LIC

HAAT 529.0 m, ATV ERP 930.0 kW

	POPULATION	AREA (sq km)
within Noise Limited Contour	1683760	43743.7
not affected by terrain losses	1466380	35287.8
lost to NTSC IX	0	0.0
lost to additional IX by ATV	33474	1476.2
lost to ATV IX only	33474	1476.2
lost to all IX	33474	1476.2

Potential Interfering Stations Included in above Scenario 6

25A NC ASHEVILLE	BMPEDT	20090511ANS	CP
26A AL GADSDEN	BPCDT	20080616AEF	CP
26A KY ASHLAND	BLEDT	20020404ABM	LIC
26A KY LOUISVILLE	BLCDT	20030129AFL	LIC
27A TN KINGSPORT	BMPCDT	20050303AAJ	CP

After Analysis

Results for: 26A TN KNOXVILLE BMLCDT 20041203AEG LIC

HAAT 529.0 m, ATV ERP 930.0 kW

	POPULATION	AREA (sq km)
within Noise Limited Contour	1683760	43743.7
not affected by terrain losses	1466380	35287.8
lost to NTSC IX	0	0.0
lost to additional IX by ATV	33599	1496.2
lost to ATV IX only	33599	1496.2
lost to all IX	33599	1496.2

Potential Interfering Stations Included in above Scenario 6

25A NC ASHEVILLE	BMPEDT	20090511ANS	CP
26A AL GADSDEN	BPCDT	20080616AEF	CP
26A KY ASHLAND	BLEDT	20020404ABM	LIC
26A KY LOUISVILLE	BLCDT	20030129AFL	LIC
27A TN KINGSPORT	BMPCDT	20050303AAJ	CP
27A NC CANTON	USERRECORD01		APP

Percent new IX = 0.0087%

Worst case new IX 0.0087% Scenario 2

#####

**Figure 3**

Analysis of Interference to Affected Station 5

Analysis of current record

Channel	Call	City/State	Application	Ref. No.
27	WAGA-TV	ATLANTA GA	BLCDT	-20060728AEL

Stations Potentially Affecting This Station

Chan	Call	City/State	Dist(km)	Status	Application	Ref. No.
26	WTJP-TV	GADSDEN AL	195.3	LIC	BLCDT	-20050511AAF
26	WTJP-TV	GADSDEN AL	195.3	CP	BPCDT	-20080616AEF
27	WAIQ	MONTGOMERY AL	240.9	LIC	BLEDT	-20060706ACK
27	WTXL-TV	TALLAHASSEE FL	349.5	LIC	BLCDT	-20090217ABY
27	WCCB	CHARLOTTE NC	367.8	LIC	BLCDT	-20020227AAZ
27	WKPT-TV	KINGSPORT TN	354.4	CP MOD	BMPCDT	-20050303AAJ
27	WKRN-TV	NASHVILLE TN	338.0	LIC	BLCDT	-20090624ABO
27	WUNW	CANTON NC	236.1	APP	USERRECORD-01	

Total scenarios = 1

Result key: 7

Scenario 1 Affected station 5

Before Analysis

Results for: 27A GA ATLANTA BLCDT 20060728AEL LIC

HAAT 332.0 m, ATV ERP 1000.0 kW

	POPULATION	AREA (sq km)
within Noise Limited Contour	4851509	32778.7
not affected by terrain losses	4802880	31368.9
lost to NTSC IX	0	0.0
lost to additional IX by ATV	30428	819.4
lost to ATV IX only	30428	819.4
lost to all IX	30428	819.4

Potential Interfering Stations Included in above Scenario 1

27A AL MONTGOMERY	BLEDT	20060706ACK	LIC
27A FL TALLAHASSEE	BLCDT	20090217ABY	LIC
27A NC CHARLOTTE	BLCDT	20020227AAZ	LIC
27A TN NASHVILLE	BLCDT	20090624ABO	LIC

After Analysis

Results for: 27A GA ATLANTA BLCDT 20060728AEL LIC

HAAT 332.0 m, ATV ERP 1000.0 kW

	POPULATION	AREA (sq km)
within Noise Limited Contour	4851509	32778.7
not affected by terrain losses	4802880	31368.9
lost to NTSC IX	0	0.0
lost to additional IX by ATV	30428	819.4
lost to ATV IX only	30428	819.4
lost to all IX	30428	819.4

Potential Interfering Stations Included in above Scenario 1

27A AL MONTGOMERY	BLEDT	20060706ACK	LIC
27A FL TALLAHASSEE	BLCDT	20090217ABY	LIC
27A NC CHARLOTTE	BLCDT	20020227AAZ	LIC
27A TN NASHVILLE	BLCDT	20090624ABO	LIC
27A NC CANTON	USERRECORD01		APP

Percent new IX = 0.0000%

Worst case new IX 0.0000% Scenario 1

#####

Analysis of Interference to Affected Station 6

**Figure 3**

Analysis of current record

Channel	Call	City/State	Application	Ref. No.
27	WCCB	CHARLOTTE NC	BLCDDT	-20020227AAZ

Stations Potentially Affecting This Station

Chan	Call	City/State	Dist(km)	Status	Application	Ref. No.
27	WAGA-TV	ATLANTA GA	367.8	LIC	BLCDDT	-20060728AEL
27	WLFL	RALEIGH NC	204.8	CP MOD	BMPCDDT	-20080620AJP
27	WKPT-TV	KINGSPORT TN	180.9	CP MOD	BMPCDDT	-20050303AAJ
28	WRDC	DURHAM NC	204.2	CP MOD	BMPCDDT	-20080620AJU
28	WRJA-TV	SUMTER SC	159.8	LIC	BLEDDT	-20040805ABA
27	WUNW	CANTON NC	199.6	APP	USERRECORD-01	

Total scenarios = 1

Result key: 8

Scenario 1 Affected station 6

Before Analysis

Results for: 27A NC CHARLOTTE BLCDDT 20020227AAZ LIC

HAAT 368.0 m, ATV ERP 1000.0 kW

	POPULATION	AREA (sq km)
within Noise Limited Contour	2986872	33070.9
not affected by terrain losses	2925101	32292.1
lost to NTSC IX	0	0.0
lost to additional IX by ATV	187419	2404.4
lost to ATV IX only	187419	2404.4
lost to all IX	187419	2404.4

Potential Interfering Stations Included in above Scenario 1

27A GA ATLANTA	BLCDDT	20060728AEL	LIC
27A NC RALEIGH	BMPCDDT	20080620AJP	CP
28A NC DURHAM	BMPCDDT	20080620AJU	CP

After Analysis

Results for: 27A NC CHARLOTTE BLCDDT 20020227AAZ LIC

HAAT 368.0 m, ATV ERP 1000.0 kW

	POPULATION	AREA (sq km)
within Noise Limited Contour	2986872	33070.9
not affected by terrain losses	2925101	32292.1
lost to NTSC IX	0	0.0
lost to additional IX by ATV	188168	2424.4
lost to ATV IX only	188168	2424.4
lost to all IX	188168	2424.4

Potential Interfering Stations Included in above Scenario 1

27A GA ATLANTA	BLCDDT	20060728AEL	LIC
27A NC RALEIGH	BMPCDDT	20080620AJP	CP
28A NC DURHAM	BMPCDDT	20080620AJU	CP
27A NC CANTON	USERRECORD01		APP

Percent new IX = 0.0274%

Worst case new IX 0.0274% Scenario 1

#####

Analysis of Interference to Affected Station 7

Analysis of current record

Channel	Call	City/State	Application	Ref. No.
27	WLFL	RALEIGH NC	BMPCDDT	-20080620AJP



**Figure 3**

Stations Potentially Affecting This Station

Chan	Call	City/State	Dist(km)	Status	Application	Ref. No.
26	WRLH-TV	RICHMOND VA	220.4	LIC	BLCDT	-20041207AAW
27	WETA-TV	WASHINGTON DC	385.9	LIC	BLEDT	-20070727ACJ
27	WCCB	CHARLOTTE NC	204.8	LIC	BLCDT	-20020227AAZ
27	WKPT-TV	KINGSPORT TN	335.1	CP MOD	BMPCDT	-20050303AAJ
28	WRDC	DURHAM NC	0.7	CP MOD	BMPCDT	-20080620AJU
27	WUNW	CANTON NC	395.8	APP	USERRECORD-01	

Proposal causes no interference

#####

# Analysis of Interference to Affected Station 8

## Analysis of current record

Channel	Call	City/State	Application	Ref. No.
27	WOUB-TV	ATHENS OH	BLEDT	-20030411ABC

## Stations Potentially Affecting This Station

Chan	Call	City/State	Dist(km)	Status	Application	Ref. No.
26	WKAS	ASHLAND KY	103.1	LIC	BLEDT	-20020404ABM
26	WBDT	SPRINGFIELD OH	186.2	CP MOD	BMPCDT	-20080619AKF
26	WQEX	PITTSBURGH PA	224.9	LIC	BLCDT	-20040831ABW
27	WIPX-TV	BLOOMINGTON IN	343.4	LIC	BLCDT	-20040406AAH
27	WBGU-TV	BOWLING GREEN OH	251.5	LIC	BLEDT	-20090612AFQ
27	WKPT-TV	KINGSPORT TN	320.4	CP MOD	BMPCDT	-20050303AAJ
28	WPTO	OXFORD OH	207.6	LIC	BLEDT	-20040714AAQ
27	WUNW	CANTON NC	421.7	APP	USERRECORD-01	

Proposed station is beyond the site to nearest cell evaluation distance

#####

# Analysis of Interference to Affected Station 9

## Analysis of current record

Channel	Call	City/State	Application	Ref. No.
27	WTNB-CA	CLEVELAND TN	BLTT	-19971027JD

## Stations Potentially Affecting This Station

Chan	Call	City/State	Dist(km)	Status	Application	Ref. No.
20	WBXX-TV	CROSSVILLE TN	112.4	LIC	BLCDT	-20090619ABD
23	WPXK-TV	JELICO TN	123.3	CP	BPCDT	-20080620AGZ
23	WPXK-TV	JELICO TN	125.5	LIC	BLCDT	-20020510AAJ
25	WUNF-TV	ASHEVILLE NC	144.8	CP MOD	BMPEDT	-20090511ANS
26	W26BE	CHATTANOOGA TN	31.7	LIC	BLTTL	-19950313IR
26	WATE-TV	KNOXVILLE TN	123.3	LIC	BMLCDT	-20041203AEG
27	WAIQ	MONTGOMERY AL	339.3	LIC	BLEDT	-20060706ACK
27	WAGA-TV	ATLANTA GA	163.9	LIC	BLCDT	-20060728AEL
27	WCCB	CHARLOTTE NC	376.7	LIC	BLCDT	-20020227AAZ
27	WKPT-TV	KINGSPORT TN	282.8	CP MOD	BMPCDT	-20050303AAJ
27	WKRN-TV	NASHVILLE TN	199.4	LIC	BLCDT	-20090624ABO
28	WRNG-LP	CHATTANOOGA TN	53.0	CP	BDFCDTL	-20090820ACX
29	WTCI	CHATTANOOGA TN	36.1	LIC	BLEDT	-20060629ACO
30	WVLT-TV	KNOXVILLE TN	121.8	CP	BPCDT	-20080618AAM
30	WVLT-TV	KNOXVILLE TN	121.8	LIC	BLCDT	-20040420AAF
34	WTNZ	KNOXVILLE TN	123.3	LIC	BMLCDT	-20040706ABG
34	WTNZ	KNOXVILLE TN	123.3	CP	BPCDT	-20080619ABZ
41	WATC-DT	ATLANTA GA	132.1	CP	BPEDT	-20080619AIR
41	WATC-DT	ATLANTA GA	132.1	LIC	BLEDT	-20070912AAT
42	WFLI-TV	CLEVELAND TN	35.8	LIC	BLCDT	-20050808AGH
27	WUNW	CANTON NC	183.7	APP	USERRECORD-01	

**Figure 3**

25 WUNF-TV ASHEVILLE NC CP MOD BMPEDT -20090511ANS  
 Proposal causes no interference

#####

# Analysis of Interference to Affected Station 10

## Analysis of current record

Channel	Call	City/State	Application	Ref. No.
27	WKPT-TV	KINGSPORT TN	BMPCDT	-20050303AAJ

## Stations Potentially Affecting This Station

Chan	Call	City/State	Dist(km)	Status	Application	Ref. No.
26	WATE-TV	KNOXVILLE TN	168.7	LIC	BMLCDT	-20041203AEG
27	WAGA-TV	ATLANTA GA	354.4	LIC	BLCDT	-20060728AEL
27	WCCB	CHARLOTTE NC	180.9	LIC	BLCDT	-20020227AAZ
27	WLFL	RALEIGH NC	335.1	CP MOD	BMPCDT	-20080620AJP
27	WOUB-TV	ATHENS OH	320.4	LIC	BLEDT	-20030411ABC
27	WKRN-TV	NASHVILLE TN	422.8	LIC	BLCDT	-20090624ABO
27	WUNW	CANTON NC	118.3	APP	USERRECORD-01	

Total scenarios = 1

Result key: 9  
 Scenario 1 Affected station 10  
 Before Analysis

Results for: 27A TN KINGSPORT BMPCDT 20050303AAJ CP  
 HAAT 695.0 m, ATV ERP 200.0 kW

	POPULATION	AREA (sq km)
within Noise Limited Contour	1045838	27503.2
not affected by terrain losses	817251	20248.5
lost to NTSC IX	0	0.0
lost to additional IX by ATV	11158	415.1
lost to ATV IX only	11158	415.1
lost to all IX	11158	415.1

Potential Interfering Stations Included in above Scenario 1

26A TN KNOXVILLE	BMLCDT	20041203AEG	LIC
27A NC CHARLOTTE	BLCDT	20020227AAZ	LIC
27A NC RALEIGH	BMPCDT	20080620AJP	CP
27A OH ATHENS	BLEDT	20030411ABC	LIC

## After Analysis

Results for: 27A TN KINGSPORT BMPCDT 20050303AAJ CP  
 HAAT 695.0 m, ATV ERP 200.0 kW

	POPULATION	AREA (sq km)
within Noise Limited Contour	1045838	27503.2
not affected by terrain losses	817251	20248.5
lost to NTSC IX	0	0.0
lost to additional IX by ATV	11910	544.1
lost to ATV IX only	11910	544.1
lost to all IX	11910	544.1

Potential Interfering Stations Included in above Scenario 1

26A TN KNOXVILLE	BMLCDT	20041203AEG	LIC
27A NC CHARLOTTE	BLCDT	20020227AAZ	LIC
27A NC RALEIGH	BMPCDT	20080620AJP	CP
27A OH ATHENS	BLEDT	20030411ABC	LIC
27A NC CANTON	USERRECORD01		APP

Percent new IX = 0.0933%

Worst case new IX 0.0933% Scenario 1

**Figure 3**

#####

Analysis of Interference to Affected Station 11

Analysis of current record

Channel	Call	City/State	Application	Ref. No.
27	WKRN-TV	NASHVILLE TN	BLCDDT	-20090624ABO

Stations Potentially Affecting This Station

Chan	Call	City/State	Dist(km)	Status	Application	Ref. No.
27	WAIQ	MONTGOMERY AL	410.4	LIC	BLEDT	-20060706ACK
27	WAGA-TV	ATLANTA GA	338.0	LIC	BLCDDT	-20060728AEL
27	WIPX-TV	BLOOMINGTON IN	378.0	LIC	BLCDDT	-20040406AAH
27	WKPT-TV	KINGSPORT TN	422.8	CP MOD	BMPCDDT	-20050303AAJ
28	WTVW	EVANSVILLE IN	224.7	CP	BPCDDT	-19991101ACY
27	WUNW	CANTON NC	357.6	APP	USERRECORD-01	

Proposal causes no interference

#####

Analysis of Interference to Affected Station 12

Analysis of current record

Channel	Call	City/State	Application	Ref. No.
28	WGTB-LP	CHARLOTTE NC	BDFCDTA	-20091211ACU

Stations Potentially Affecting This Station

Chan	Call	City/State	Dist(km)	Status	Application	Ref. No.
27	WCCB	CHARLOTTE NC	4.7	LIC	BLCDDT	-20020227AAZ
28	WDWW-LP	CLEVELAND GA	296.3	LIC	BLTTL	-20070215AAL
28	WRDC	DURHAM NC	200.4	CP MOD	BMPCDDT	-20080620AJU
28	WTGS	HARDEEVILLE SC	361.4	LIC	BLCDDT	-20090706AEU
28	W28DB-D	HONEA PATH SC	160.6	LIC	BLDTT	-20100825AAD
28	WRJA-TV	SUMTER SC	157.0	LIC	BLEDT	-20040805ABA
28	WCYB-TV	BRISTOL VA	184.7	APP	BDRTCDT	-20090824ABQ
28	W28DC-D	ROANOKE, ETC. VA	221.0	CP	BDCCDTL	-20061019ACM
29	WXLV-TV	WINSTON-SALEM NC	103.8	CP	BPCDDT	-19991101ACF
27	WUNW	CANTON NC	204.2	APP	USERRECORD-01	

Proposed station is beyond the site to  
nearest cell evaluation distance

#####

Analysis of Interference to Affected Station 13

Analysis of current record

Channel	Call	City/State	Application	Ref. No.
27	WUNW	CANTON NC	USERRECORD-01	

Stations Potentially Affecting This Station

Chan	Call	City/State	Dist(km)	Status	Application	Ref. No.
26	WATE-TV	KNOXVILLE TN	105.2	LIC	BMLCDDT	-20041203AEG
27	WAGA-TV	ATLANTA GA	236.1	LIC	BLCDDT	-20060728AEL
27	WCCB	CHARLOTTE NC	199.6	LIC	BLCDDT	-20020227AAZ
27	WLFL	RALEIGH NC	395.8	CP MOD	BMPCDDT	-20080620AJP
27	WOUB-TV	ATHENS OH	421.7	LIC	BLEDT	-20030411ABC
27	WKPT-TV	KINGSPORT TN	118.3	CP MOD	BMPCDDT	-20050303AAJ
27	WKRN-TV	NASHVILLE TN	357.6	LIC	BLCDDT	-20090624ABO

Total scenarios = 1

Figure 3

```
Result key:      10
Scenario        1 Affected station      13
Before Analysis

Results for: 27A NC CANTON                USERRECORD01          APP
HAAT 470.0 m, ATV ERP    7.0 kW

                POPULATION    AREA (sq km)
within Noise Limited Contour    672384    17337.8
not affected by terrain losses    391398    9040.0
lost to NTSC IX                  0        0.0
lost to additional IX by ATV    47568    657.5
lost to ATV IX only            47568    657.5
lost to all IX                 47568    657.5

Potential Interfering Stations Included in above Scenario    1

26A TN KNOXVILLE          BMLCDT    20041203AEG    LIC
27A GA ATLANTA             BLCDT     20060728AEL    LIC
27A NC CHARLOTTE           BLCDT     20020227AAZ    LIC
27A TN KINGSPORT          BMPCDT    20050303AAJ    CP

#####

FINISHED FINISHED FINISHED FINISHED FINISHED FINISHED
```