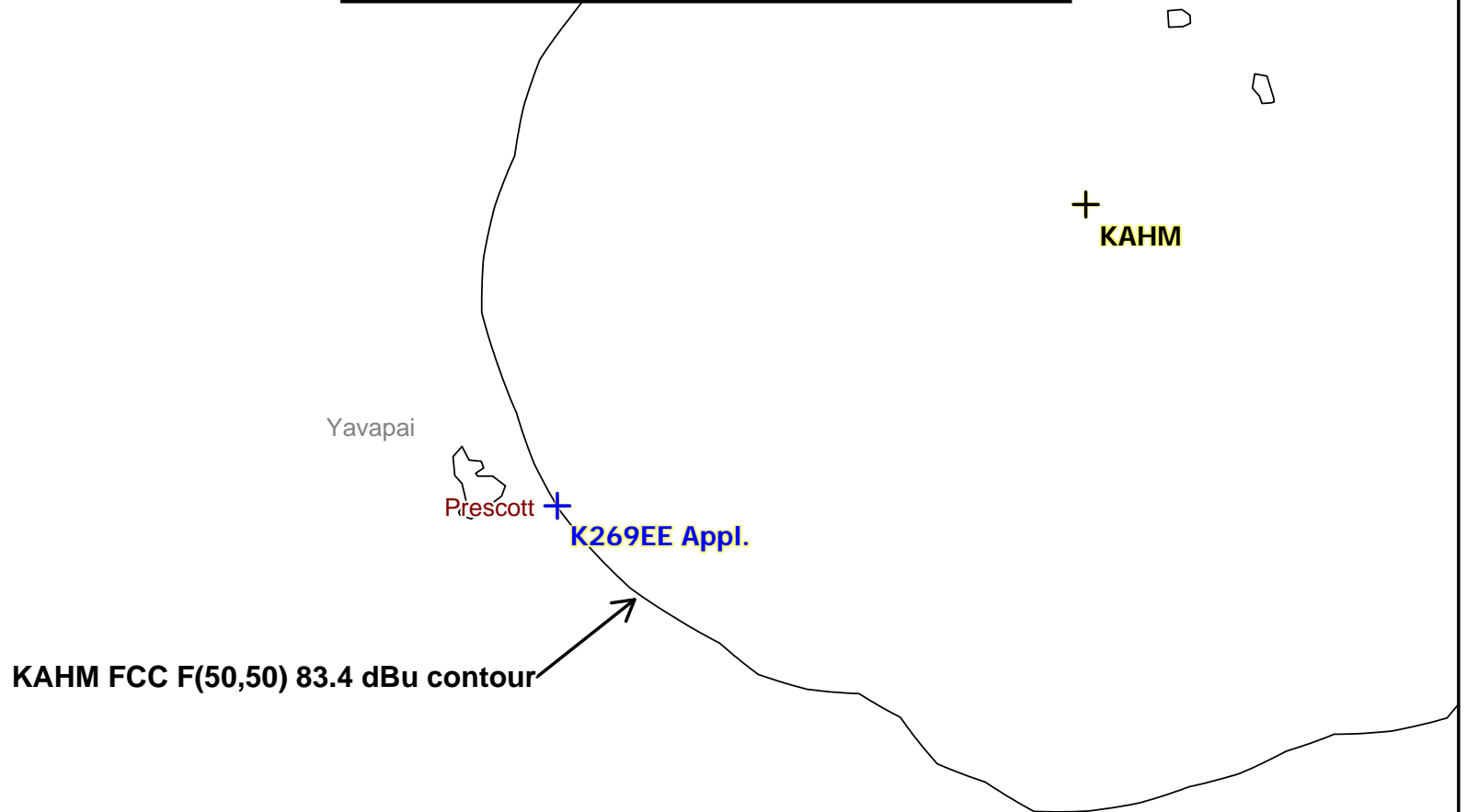


K269EE Appl.
BLFT19920403TD
Latitude: 34-32-27 N
Longitude: 112-25-40 W
ERP: 0.25 kW
Channel: 269
Frequency: 101.7 MHz
AMSL Height: 1935.0 m
Elevation: 1917.0 m
Horiz. Pattern: Omni
Vert. Pattern: No
Prop Model: FCC Model
Loc. Variability: 50.0%
Time Variability: 50.0%
HAAT Mthd: FCC

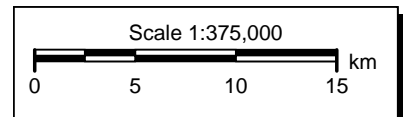
KAHM
Prescott, AZ
BLH19960111BK
Latitude: 34-41-14 N
Longitude: 112-07-01 W
ERP: 58.00 kW
Channel: 271
Frequency: 102.1 MHz
AMSL Height: 2356.0 m
Elevation: 2332.0 m
Horiz. Pattern: Omni
Vert. Pattern: No
Prop Model: FCC Model
Loc. Variability: 50.0%
Time Variability: 50.0%
HAAT Mthd: FCC

EXHIBIT 13-B SECTION 73.1204 Contour Protection - KAHM

The KAHM FCC F(50,50) contour at K269EE is 83.4 dBu.
Therefore the K269EE F(50,10) interfering contour with respect
to KAHM is 124.4 dBu, which extends 75 meters from the tower.
The nearest occupied building is 290 meters (951 ft.) from the
K269EE transmit site.



HORIZON
BROADCAST SOLUTIONS



V-Soft Communications LLC ©

Screen 3 - Results

Results of Calculation

Distance to Contour = 0.075 kilometers

[Back to Numeric Entries](#)

[Back to Initial Selections](#)

Input Data from Screens 1 and 2

ERP = 0.250 kW

HAAT = 197.0 meters

Field Strength = 123.4 dBu

Distances are in **meters and kilometers**

Power is in **kW (kilowatts)**

Field Strength is in **dBu**

FM and NTSC TV Channels 2 through 6

F(50,10) for interfering contours selected

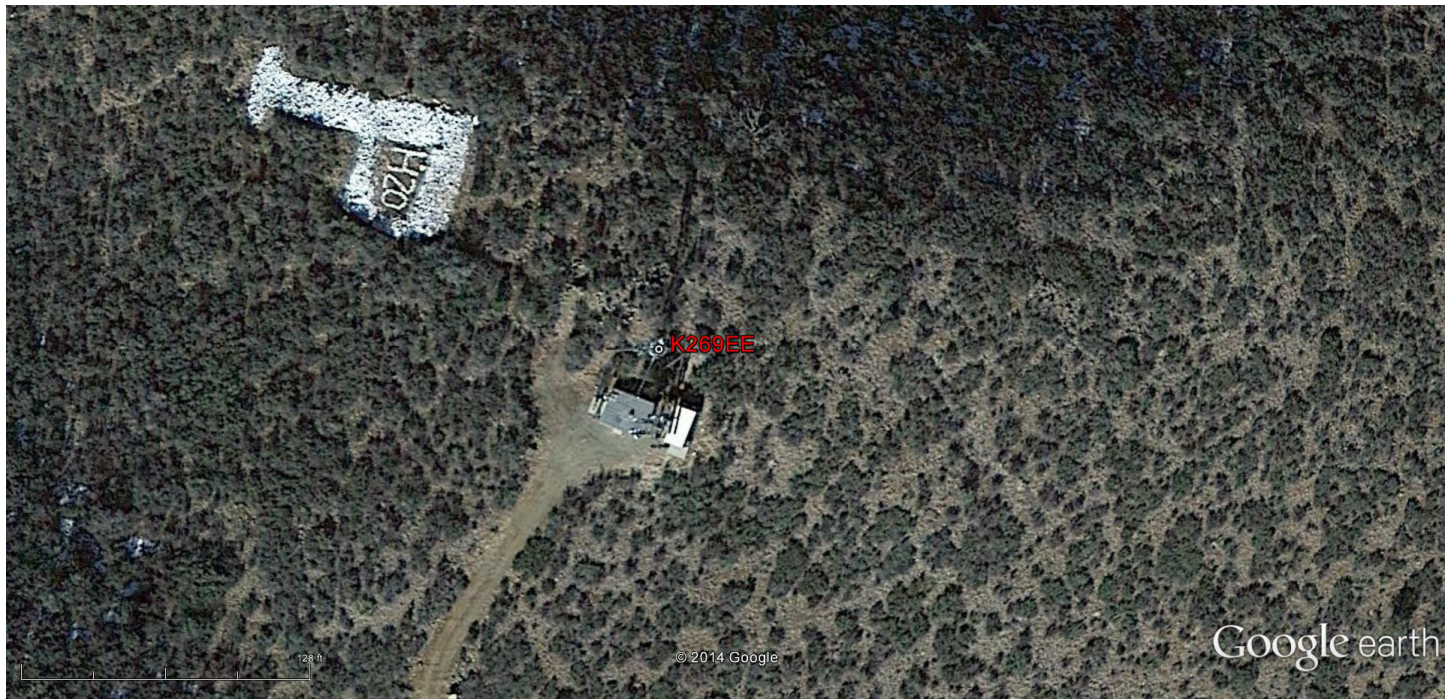
Find Distance, given a Field Strength



Google earth

feet
meters





Google earth

feet 300
meters 90

