

PAINTING AND LIGHTING IN ACCORDANCE
WITH F.A.A. SPECIFICATIONS.

NOT DRAWN TO
SCALE OR SHAPE

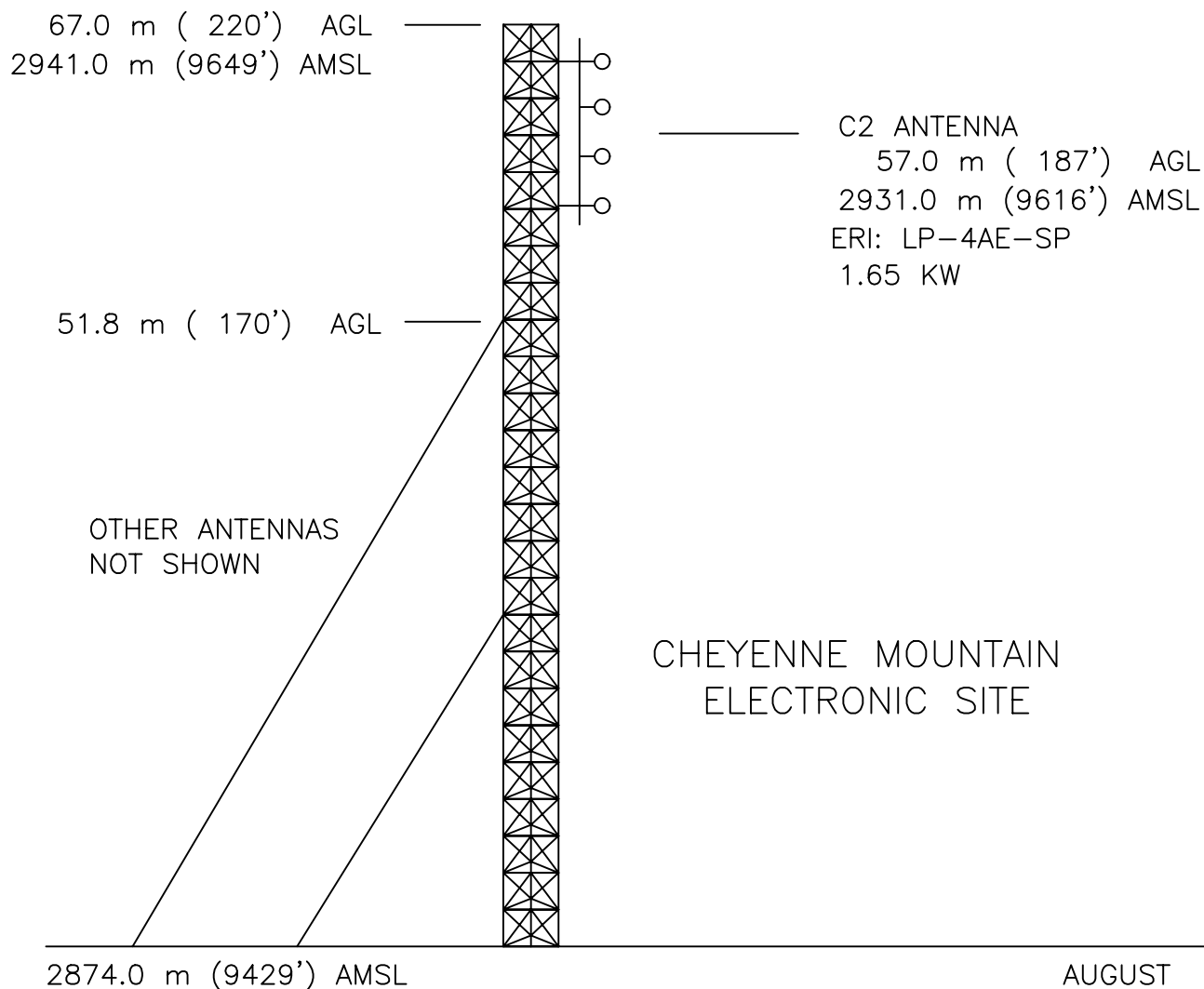
N. LAT.: 38° 44' 40"
W. LON: 104° 51' 41" NAD 1927

F.A.A.: 78-RM-191-OE

N. LAT.: 38° 44' 40.0"
W. LON: 104° 51' 42.9" NAD 1983

ASR: 1023337

NO LIGHTING REQUIRED
Adjacent to Taller Towers with Lights



AUGUST 2005

MULLANEY ENGINEERING, INC.
GAITHERSBURG, MARYLAND

FIGURE 3

TOWER SKETCH
RADIO STATION KSKX
SECURITY, COLORADO
CH. 288C2 1.65 KW-DA 676 m HAAT

