

TOWER & ANTENNA AS-BUILT

19824 760TH AVE. OSTRANDER
NW1/4, SEC. 16, T102N, R14W
MOWER COUNTY, MINNESOTA



BEARINGS
Bearings are Minnesota State
Plane Grid Azimuths measured
to the right from grid north.
MN STATE PLANE S. ZONE NAD 83(96)

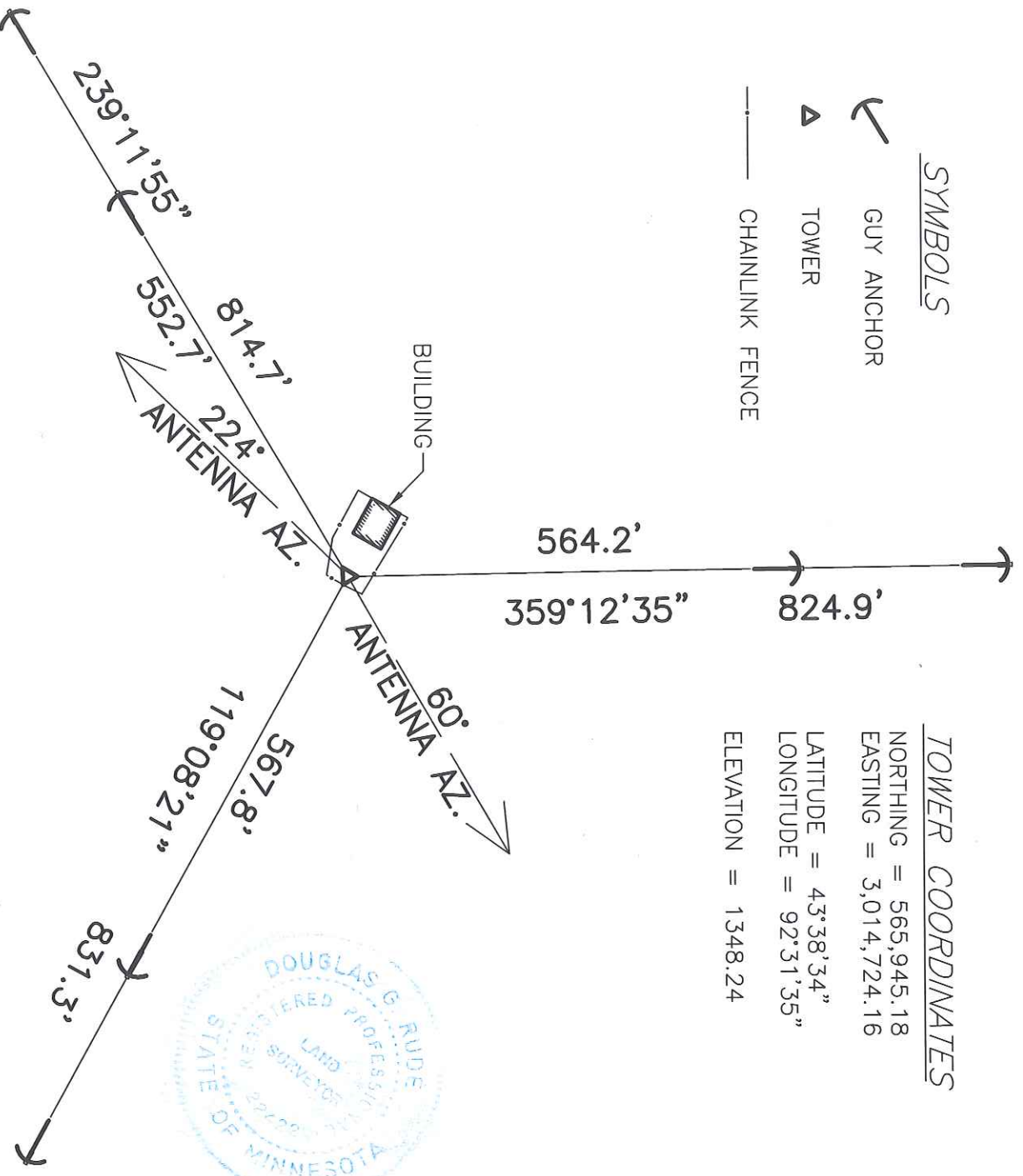
ELEVATION DATUM
NAVD88

SYMBOLS

- GUY ANCHOR
- TOWER
- CHAINLINK FENCE

TOWER COORDINATES

NORTHING = 565,945.18
EASTING = 3,014,724.16
LATITUDE = 43°38'34"
LONGITUDE = 92°31'35"
ELEVATION = 1348.24



PROJECT NUMBER 11345-10
11345Asb01.DWG
DATE OF SURVEY 12-16-10
DRAFTED BY C.D.M.
SURVEYED BY C.D.M./T. RUNIONS
SURVEYED FOR VCY America, Inc.

I HEREBY CERTIFY THAT THIS SURVEY, PLAN OR
REPORT WAS PREPARED BY ME OR UNDER MY
DIRECT SUPERVISION AND THAT I AM A DULY
LICENSED LAND SURVEYOR UNDER THE LAWS
OF THE STATE OF MINNESOTA.

DOUGLAS G. RUDE, PLS

DATE 12-16-2010

NUMBER 22422

ENGINEERS

SURVEYORS • PLANNERS
LANDSCAPE ARCHITECTS

717 THIRD AVE. S.E.
ROCHESTER, MN
507-288-6464
FAX 507-288-5058
E-MAIL: INFO@YACGY.COM

