

4

3

2

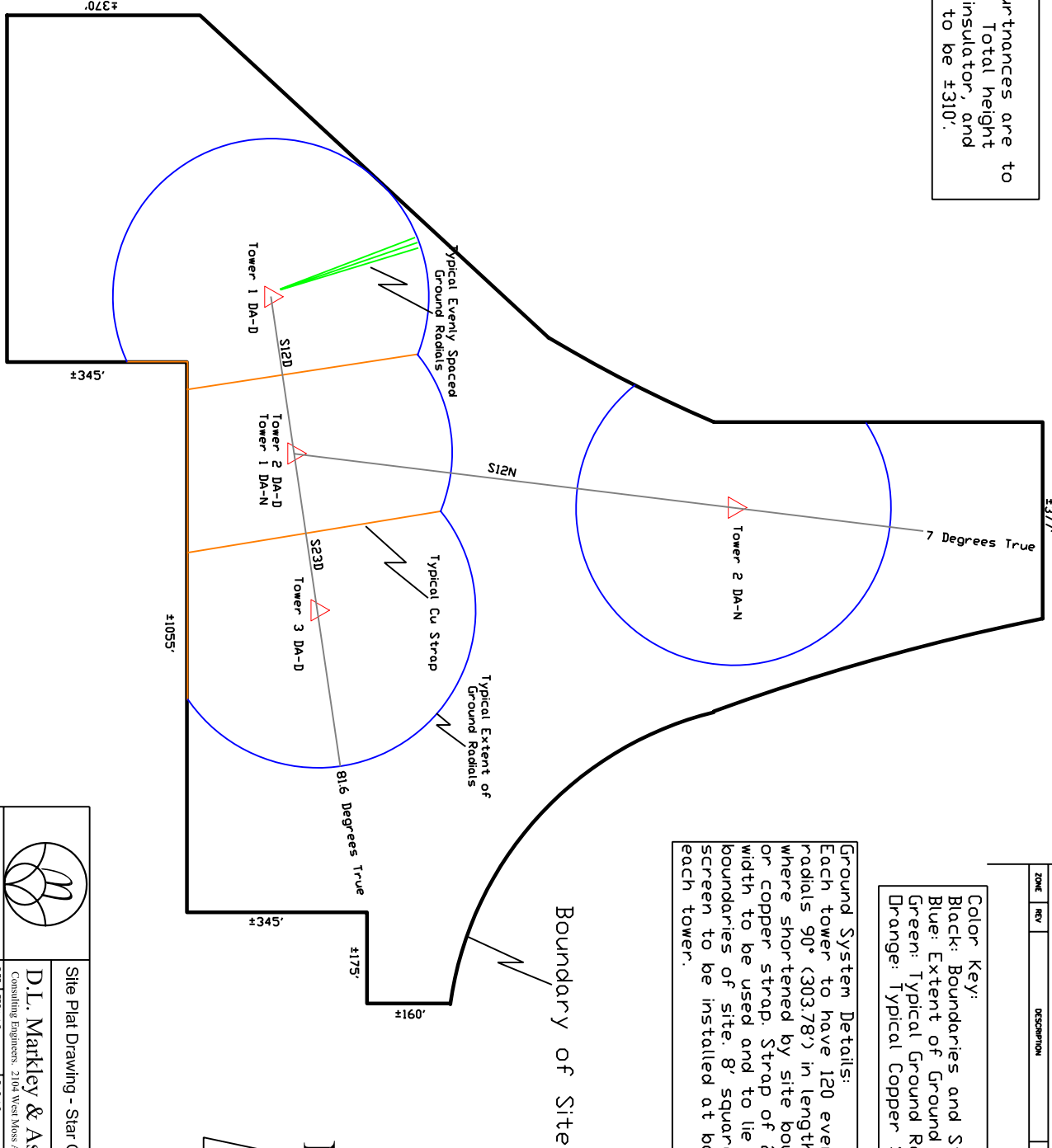
1

Tower Information:
Towers without appurtnances are to be 303.78' in height. Total height including base pier, insulator, and obstruction lighting to be ±310'.

Tower Spacings:
S12D=90°=303.78'
S23D=90°=303.78'
S12N=252°=850.58'

Color Key:
Black: Boundaries and Structures.
Blue: Extent of Ground Radials.
Green: Typical Ground Radials.
Orange: Typical Copper Strap.

Ground System Details:
Each tower to have 120 evenly spaced radials 90° (303.78') in length except where shortened by site boundaries or copper strap. Strap of 2 inch width to be used and to lie within boundaries of site. 8' square ground screen to be installed at base of each tower.



Site Plat Drawing - Star Over Orlando, Inc.

D.L. Markley & Associates, Inc.
Consulting Engineers, 2104 West Moss Ave., Peoria, Illinois 61604

Drawn: JDR
Approved: DLM

Scale: NTS
Sheet: 1 of 1