

**Attachment #5**  
**Multiple Ownership Compliance Study**  
Alamo, Tennessee  
December 2005

This Multiple Ownership Compliance Study is being conducted to determine if Grace Broadcasting Services, Inc. is in compliance with the multiple ownership rules of §73.3555 (a) with the correction of coordinates of WWGM (FM) at Alamo, Tennessee. Because the community of Alamo is not located within the boundaries of any BIA Metro, this study follows the guidelines of contour-overlap methodology.

The stations with common ownership form two markets. The subject area of Market #1 is comprised of the city grade contours of WWGM (FM), Alamo, Tennessee; WTNE (AM) and WTNE-FM, both at Trenton, Tennessee. All stations with common ownership are shown in Attachment #5A. The subject stations of Market #1 are shown in Attachment #5B. Attachments #5C-5D are contour maps showing all AM and FM services to the Market #1 subject area. Attachment #5E is a tabulation of all AM and FM services to the subject area of Market #1.

In Market #1, Grace Broadcasting Services, Inc. owns 3 stations (1 AM and 2 FM) in a market of 32 stations (including the 3 subject stations). FCC 301 Worksheet #2 states that a party in this local radio ownership "tier" may have a cognizable interest in a non-Metro radio market with the limits of:

*"In a radio market with between 30 and 44 (inclusive) commercial and noncommercial educational full-power radio stations, a party may have a cognizable interest in up to 7 commercial radio stations, not more than 4 of which are in the same service (AM or FM)."*

The subject area of Market #2 is comprised of the city grade contours of WWGM (FM), Alamo, Tennessee, WTKB-FM, Atwood, Tennessee and WTNE-FM, Trenton,

Tennessee. The subject stations of Market #2 are shown in Attachment #5F. All services to the Market #2 subject area are shown in Attachments #5G-5H. Attachment #5I is a tabulation of all AM and FM services to the subject area of Market #2.

In Market #2, Grace Broadcasting Services, Inc. owns 3 stations (all FM) in a market of 35 services (including the 3 subject stations). FCC 301 Worksheet #2 states that a party in this local radio ownership "tier" may have a cognizable interest in a non-Metro radio market with the limits of:

*"In a radio market with between 30 and 44 (inclusive) commercial and noncommercial educational full-power radio stations, a party may have a cognizable interest in up to 7 commercial radio stations, not more than 4 of which are in the same service (AM or FM);"*

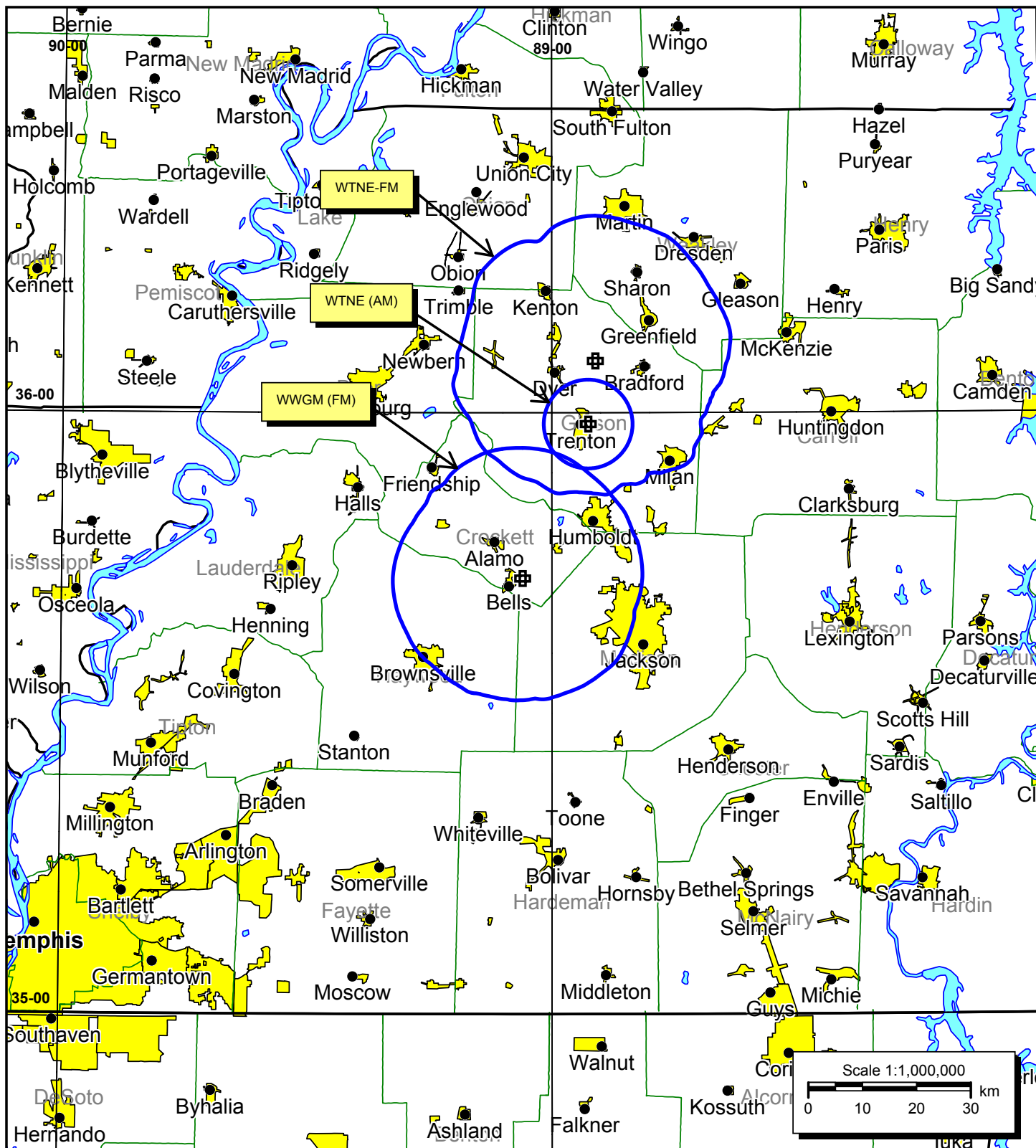
Based on these findings, it is believed that Grace Broadcasting Services, Inc. is in compliance with §73.3555 (a) of the Commission's rules. All statements contained herein are thought to be accurate and correct to the knowledge of the undersigned.



Clifton G. Moor  
Bromo Communications, Inc.

December 7, 2005





**Attachment #5B**  
**Market #1 - Subject Stations**  
**Multiple Ownership Compliance Study**  
**Alamo, Tennessee**

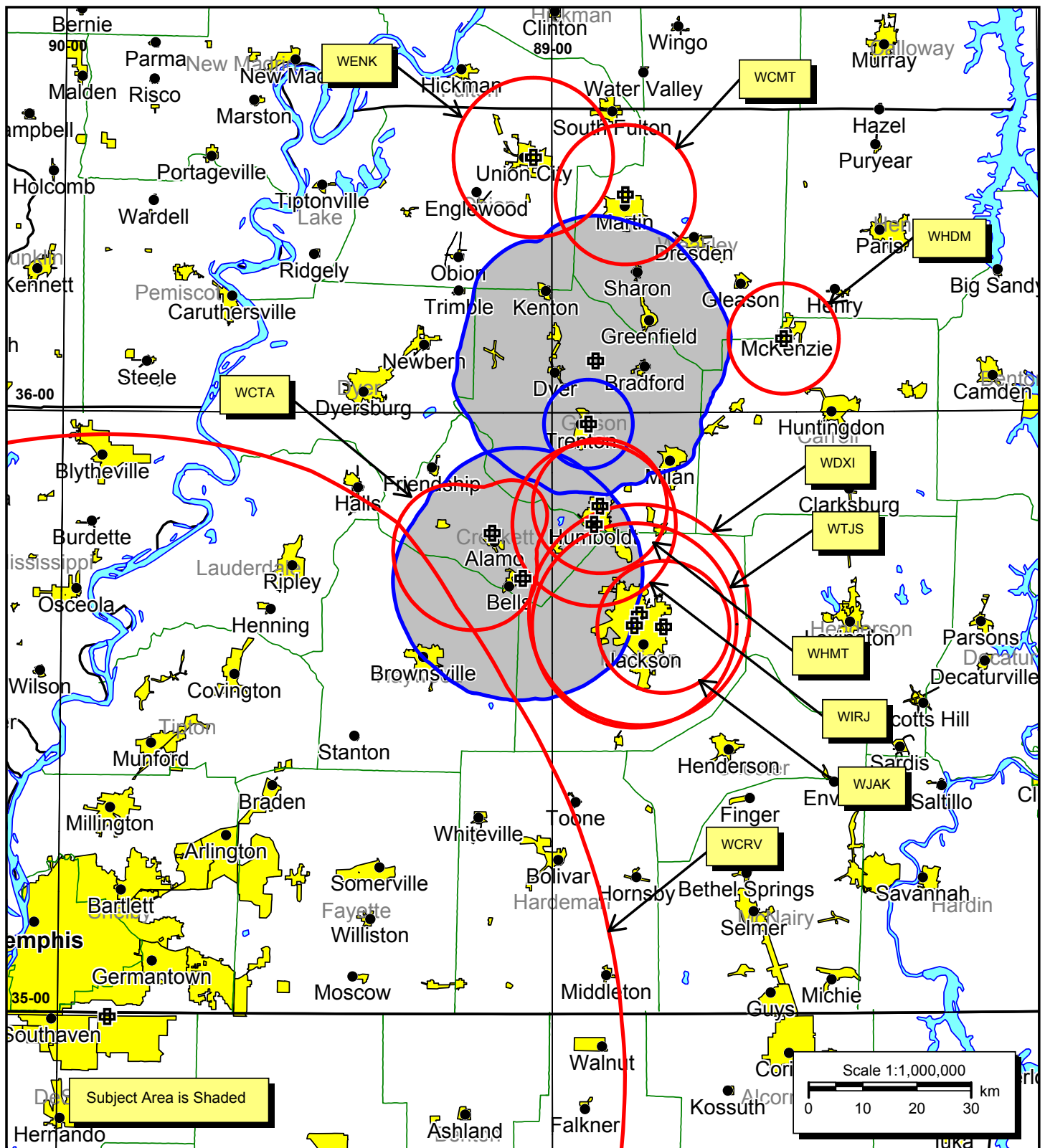
**Bromo Communications, Inc.**

Atlanta, Georgia

December 2005







**Attachment #5D**  
**Market #1 - AM Services to Subject Area**  
**Multiple Ownership Compliance Study**  
**Alamo, Tennessee**

**Bromo Communications, Inc.**

Atlanta, Georgia

December 2005

**Attachment #5E**  
**Multiple Ownership Compliance Study**  
 Alamo, Tennessee  
 December 2005

**Tabulation of Services to Subject Area**

**Market #1**

**Subject Stations**

Call	Ch/Freq	Latitude	Longitude	Power (kW)	City	State
WWGM	226C3	35° 43' 28"	89° 03' 35"	14	Alamo	TN
WTNE (AM)	1500	35° 58' 52"	88° 55' 32"	0.2	Trenton	TN
WTNE-FM	249C2	36° 05' 10"	88° 54' 39"	49	Trenton	TN

**FM Services to Subject Area**

Call	Ch/Freq	Latitude	Longitude	Power (kW)	City	State
WAMP	201A	35° 39' 38"	88° 51' 30"	0.75	Jackson	TN
WASL	261C2	36° 06' 00"	89° 29' 12"	26	Dyersburg	TN
WCDZ	236C3	36° 15' 50"	88° 40' 03"	21.5	Dresden	TN
WCMT	267C3	36° 29' 00"	88° 57' 10"	22	South Fulton	TN
WHHM	299C2	35° 27' 23"	88° 37' 36"	50	Henderson	TN
WIGH	204C2	35° 42' 12"	88° 36' 10"	15	Lexington	TN
WKNP	211C2	35° 38' 46"	88° 49' 57"	17	Jackson	TN
WKNQ	214C1	36° 06' 00"	89° 29' 12"	100	Dyersburg	TN
WLSQ	232A	36° 06' 12"	89° 07' 45"	6	Dyer	TN
WLSZ	287A	35° 50' 41"	88° 54' 08"	3	Humboldt	TN
WMXX	276C2	35° 32' 39"	88° 47' 18"	42	Jackson	TN
WNWS	268A	35° 38' 59"	88° 46' 11"	2.2	Jackson	TN
WTNV	281C1	35° 38' 46"	88° 49' 57"	100	Jackson	TN
WUTM	212A	36° 20' 28"	88° 51' 39"	0.185	Martin	TN
WVHR	265C3	35° 57' 05"	88° 27' 47"	25	Huntingdon	TN
WWYN	295C1	35° 54' 05"	88° 46' 51"	100	McKenzie	TN
WYNU	222C0	35° 54' 06"	88° 46' 55"	100	Milan	TN
WYVY	285A	36° 28' 25"	88° 56' 41"	6	Union City	TN
WZDQ	272A	35° 45' 45"	88° 51' 42"	6	Humboldt	TN

**AM Services to Subject Area**

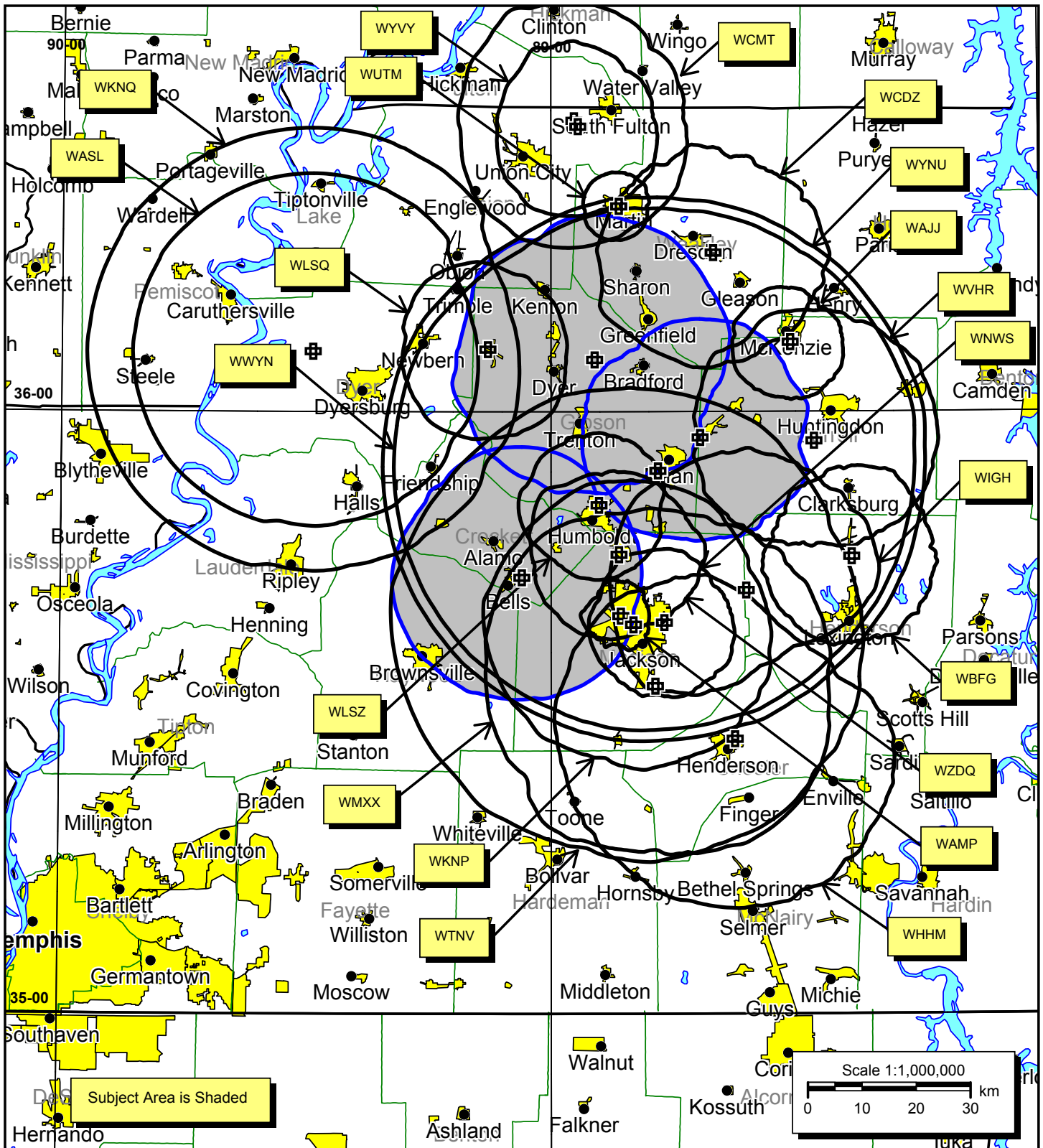
Call	Ch/Freq	Latitude	Longitude	Power (kW)	City	State
WCMT	1410	36° 21' 45"	88° 50' 57"	0.7	Martin	TN
WCRV	640	34° 59' 35"	89° 53' 58"	50	Collierville	TN
WCTA	810	35° 47' 59"	89° 07' 20"	0.25	Alamo	TN
WDXI	1310	35° 39' 50"	88° 49' 20"	5	Jackson	TN
WENK	1240	36° 25' 28"	89° 02' 17"	1	Union City	TN

**AM Services to Subject Area**  
(Continued)

<b>Call</b>	<b>Ch/Freq</b>	<b>Latitude</b>	<b>Longitude</b>	<b>Power (kW)</b>	<b>City</b>	<b>State</b>
WHDM	1440	36° 07' 20"	88° 31' 31"	0.5	McKenzie	TN
WHMT	1190	35° 50' 41"	88° 54' 08"	0.42	Humboldt	TN
WIRJ	740	35° 48' 52"	88° 54' 51"	0.25	Humboldt	TN
WJAK	1460	35° 38' 37"	88° 46' 24"	1	Jackson	TN
WTJS	1390	35° 38' 46"	88° 49' 57"	5	Jackson	TN





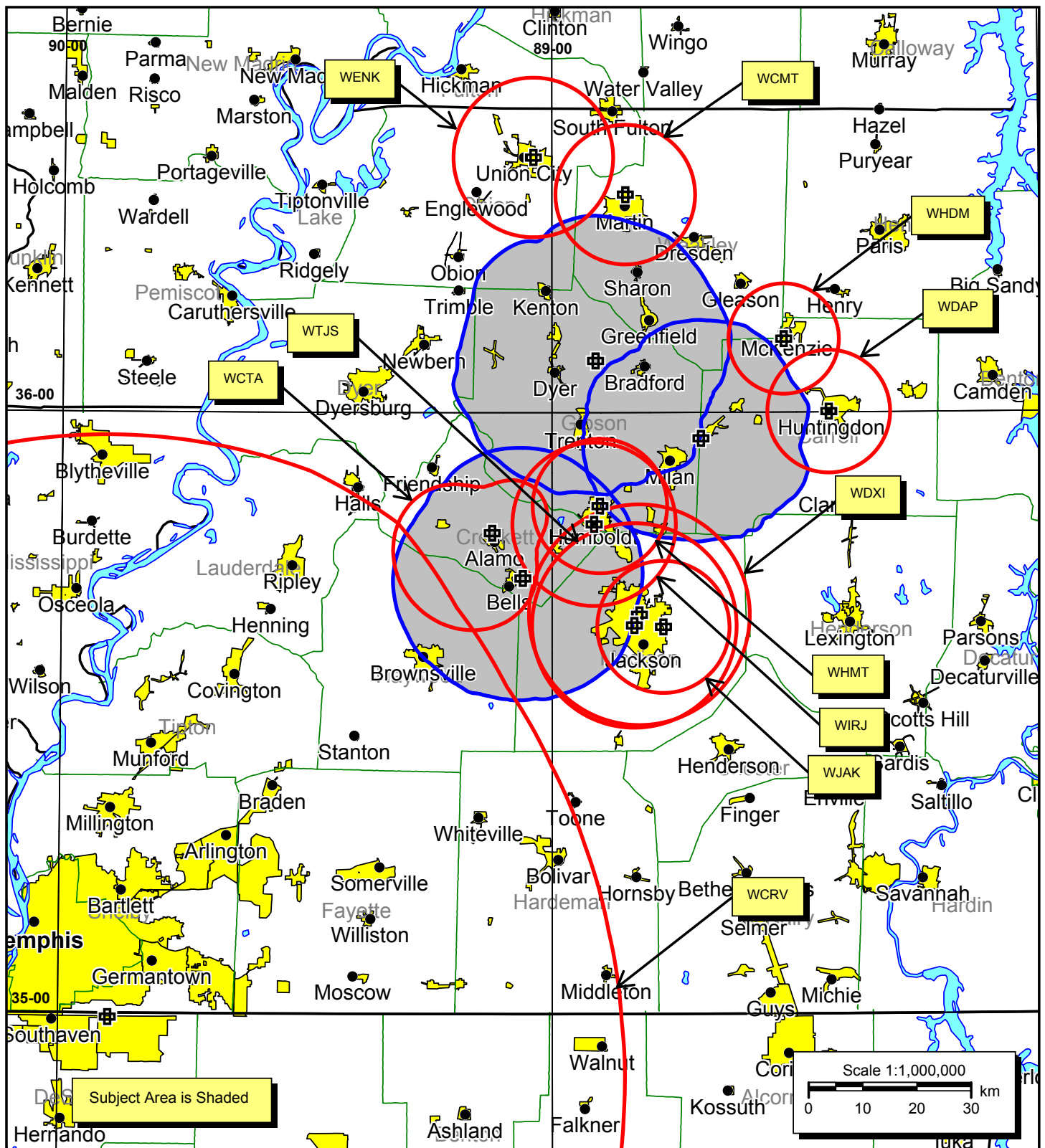


**Attachment #5G**  
**Market #2 - FM Services to Subject Area**  
**Multiple Ownership Compliance Study**  
**Alamo, Tennessee**

**Bromo Communications, Inc.**

Atlanta, Georgia

December 2005



**Attachment #5H**  
**Market #2 - AM Services to Subject Area**  
**Multiple Ownership Compliance Study**  
**Alamo, Tennessee**

**Bromo Communications, Inc.**

Atlanta, Georgia

December 2005

**Attachment #5I**  
**Multiple Ownership Compliance Study**  
 Alamo, Tennessee  
 December 2005

**Tabulation of Services to Subject Area**

**Market #2**

**Subject Stations**

Call	Ch/Freq	Latitude	Longitude	Power (kW)	City	State
WWGM	226C3	35° 43' 28"	89° 03' 35"	14	Alamo	TN
WTKB-FM	229C3	35° 57' 25"	88° 41' 44"	15	Atwood	TN
WTNE-FM	249C2	36° 05' 10"	88° 54' 39"	49	Trenton	TN

**FM Services to Subject Area**

Call	Ch/Freq	Latitude	Longitude	Power (kW)	City	State
WAJJ	207A	36° 06' 55"	88° 30' 38"	1	McKenzie	TN
WAMP	201A	35° 39' 38"	88° 51' 30"	0.75	Jackson	TN
WASL	261C2	36° 06' 00"	89° 29' 12"	26	Dyersburg	TN
WBSG	243A	35° 45' 33"	88° 23' 15"	6	Parker's Crossing	TN
WCDZ	236C3	36° 15' 50"	88° 40' 03"	21.5	Dresden	TN
WCMT	267C3	36° 29' 00"	88° 57' 10"	22	South Fulton	TN
WHHM	299C2	35° 27' 23"	88° 37' 36"	50	Henderson	TN
WIGH	204C2	35° 42' 12"	88° 36' 10"	15	Lexington	TN
WKNP	211C2	35° 38' 46"	88° 49' 57"	17	Jackson	TN
WKNQ	214C1	36° 06' 00"	89° 29' 12"	100	Dyersburg	TN
WLSQ	232A	36° 06' 12"	89° 07' 45"	6	Dyer	TN
WLSZ	287A	35° 50' 41"	88° 54' 08"	3	Humboldt	TN
WMXX	276C2	35° 32' 39"	88° 47' 18"	42	Jackson	TN
WNWS	268A	35° 38' 59"	88° 46' 11"	2.2	Jackson	TN
WTNV	281C1	35° 38' 46"	88° 49' 57"	100	Jackson	TN
WUTM	212A	36° 20' 28"	88° 51' 39"	0.185	Martin	TN
WVHR	265C3	35° 57' 05"	88° 27' 47"	25	Huntingdon	TN
WWYN	295C1	35° 54' 05"	88° 46' 51"	100	McKenzie	TN
WYNU	222C0	35° 54' 06"	88° 46' 55"	100	Milan	TN
WYVY	285A	36° 28' 25"	88° 56' 41"	6	Union City	TN
WZDQ	272A	35° 45' 45"	88° 51' 42"	6	Humboldt	TN

**AM Services to Subject Area**

Call	Ch/Freq	Latitude	Longitude	Power (kW)	City	State
WCMT	1410	36° 21' 45"	88° 50' 57"	0.7	Martin	TN
WCRV	640	34° 59' 35"	89° 53' 58"	50	Collierville	TN
WCTA	810	35° 47' 59"	89° 07' 20"	0.25	Alamo	TN

**AM Services to Subject Area**  
(Continued)

<b>Call</b>	<b>Ch/Freq</b>	<b>Latitude</b>	<b>Longitude</b>	<b>Power (kW)</b>	<b>City</b>	<b>State</b>
WDAP	1530	36° 00' 04"	88° 26' 02"	1	Huntingdon	TN
WDXI	1310	35° 39' 50"	88° 49' 20"	5	Jackson	TN
WENK	1240	36° 25' 28"	89° 02' 17"	1	Union City	TN
WHDM	1440	36° 07' 20"	88° 31' 31"	0.5	McKenzie	TN
WHMT	1190	35° 50' 41"	88° 54' 08"	0.42	Humboldt	TN
WIRJ	740	35° 48' 52"	88° 54' 51"	0.25	Humboldt	TN
WJAK	1460	35° 38' 37"	88° 46' 24"	1	Jackson	TN
WTJS	1390	35° 38' 46"	88° 49' 57"	5	Jackson	TN