

DELAWDER COMMUNICATIONS, INC.

P.O. Box 1095
Ashburn, Virginia 20146-1095
(703) 299-9222

ENGINEERING REPORT

K276GL, to Splendora Tower, TX, Channel 277D FM Translator Application

ENGINEERING STATEMENT

All required protections are met by contour non-overlap pursuant to Section 74.1204, with the exception of protection to KLTN, Houston, TX, 275C0 and KHJK, La Porte, TX, 279C. KLTN and KHJK are protected, as discussed below.

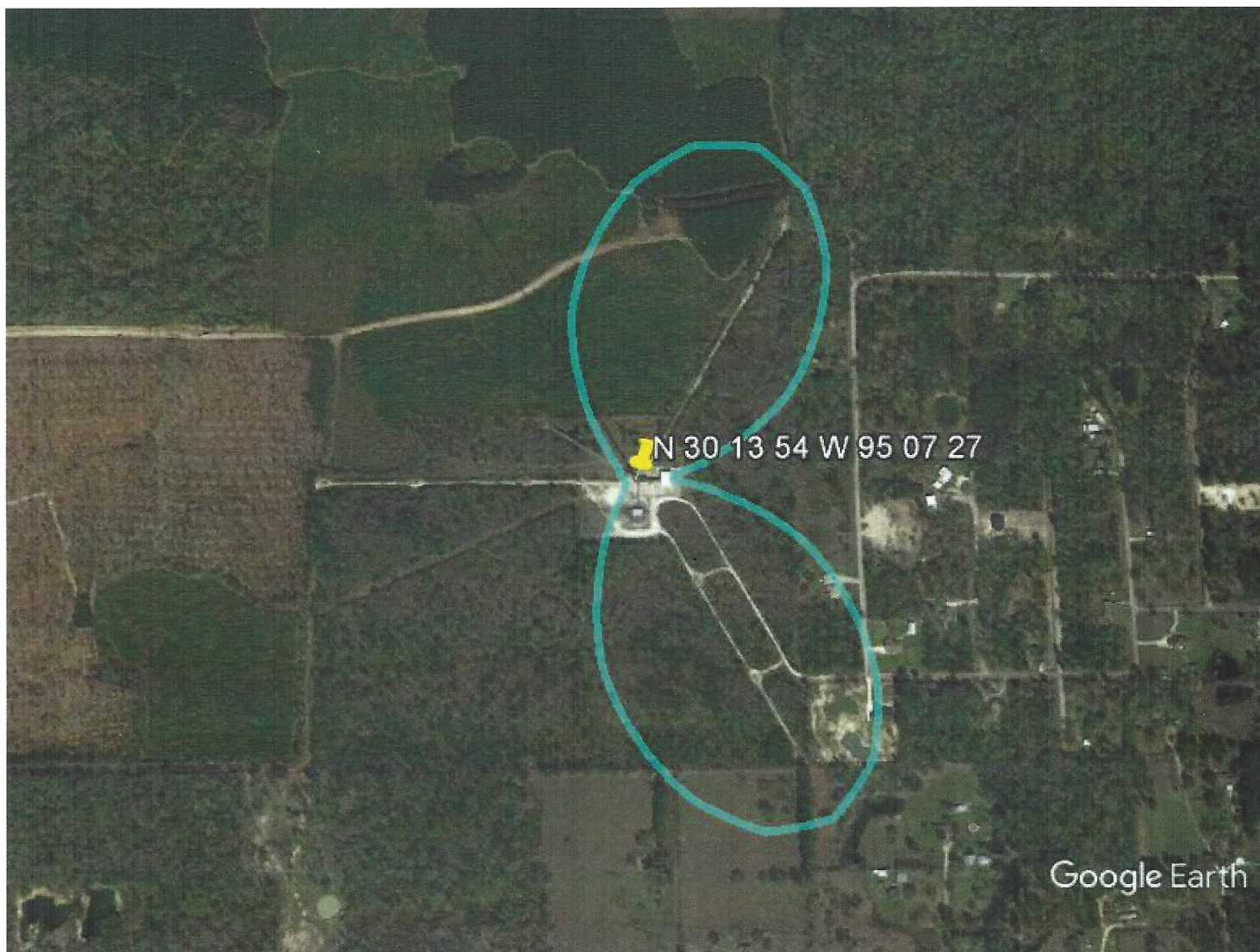
PROTECTION TO KLTN AND KHJK

KLTN 275C0 (56.5 kilometers at 201 degrees True from translator site) and KHJK 279C (67.6 kilometers at 119 degrees True from translator site) are second adjacent-channel stations to the proposed channel 277 translator facility. The 60 dBu F50,50 service contours of both KLTN and KHJK extend beyond the 277D transmitter site. Using the well-established *Living Way Ministries* Methodology, no actual interference to any population is predicted to exist to KLTN and KHJK.

Note that a rule waiver of Section 74.1204 for this second and third adjacent-channel protection using the well-established *Living Way Ministries* Methodology is respectfully requested if such a rule waiver is deemed necessary for protection to any station.

The F50,50 signal strength from KLTN at the proposed 277D transmitter site is greater than 67 dBu (the "desired" signal of KLTN). The F50,50 signal strength from KHJK at the proposed 277D transmitter site is greater than 70 dBu (the "desired" signal of KHJK). The second/third adjacent-channel protection is an undesired-to-desired ("U/D") dB signal strength ratio of 40:1. Therefore, predicted interference to KLTN and KHJK is a 277D signal of greater than or equal to 107 dBu.

The 107 dBu signal based on a free space field determination is predicted to extend out to 498 meters from the proposed 277D transmitter antenna. (See the attached aerial photo with the 107 dBu FSL contour.) Base on the relative field being below 0.7 at all downward angles greater than 30 degrees, the 107 dBu FSL contour extends no more than 348 meters at all depression angles below 30 degrees. The interfering signal level will not reach any point at ground level or at 2 meters above ground level. (The clearance is more than 80 meters.) Therefore, pursuant to Section 74.1204(d) of the FCC Rules, KLTN and KHJK are adequately protected by the proposed facility.



Google Earth



PROPOSED 107 DBU FREE SPACE LOSS CONTOUR IS SHOWN.