

Second Adjacent Channel Waiver Request and Statement.

**Proposed; New LPFM Station
Maryland Hall Arts Center
Annapolis, Maryland
104.7 MHz; FM Channel 284**

A second adjacent channel waiver is hereby requested in accordance with §73.807(e)(1).

This exhibit demonstrates that the overlap contours encompass uninhabited sections of county lands, federal lands, the waters of Carr Creek, the Severn River, and the Chesapeake Bay.

The proposed LPFM transmitter site is on the Greenbury Point Peninsula, a former site of the U.S. Naval Transmitter facility. The land., at the proposed LPFM site, and its assets, are currently

owned by Anne Arundel County, Maryland.

These uninhabited areas will be traversed by the signal (from the proposed LPFM station), and, as it reaches the general population, the signal strength of the proposed LPFM station will be on parity with that of the second adjacent channel stations discussed herein..

The following FCC Radio Tools were used in preparation of this exhibit.

- LPFM Channel Finder.
- FM Query.
- FM Curves.
- HAAT Tool: Height Above Average Terrain.
- FM Power Tool; ERP in accordance to HAAT for compliance with §73.811.
- Nadcon 27/83

Table 1; 40 dB U/D Overlap Contours

The proposed LPFM station facility at 104.7 MHz is within the 54 dBu primary service contours of two second adjacent channel Class “B” FM stations:

- WZFT, Baltimore, Maryland, at 104.3 MHz
- WAVA-FM, Arlington, Virginia, at 105.1 MHz.

Second Adjacent Channel Station Field Strengths and U/D Overlap Contours					
Proposed LPFM ERP of 75 Watts					
Call Sign	FM Channel	Frequency	F(50,50) Field	40 dB U/D Contour	40 dB U/D Radius
WZFT	282B	104.3 MHz	64.9 dBu	104.9 dBu	345 meters
WAVA-FM	286B	105.1 MHz	58.4 dBu	98.4 dBu	730 meters

Second Adjacent Channel Waiver Request and Statement.

**Proposed; New LPFM Station
Maryland Hall Arts Center
Annapolis, Maryland
104.7 MHz; FM Channel 284**

Table 2:

Second Adjacent Channel Signal Strength Summary.

						True Bearing From Station					Signal (dBu) at LPFM site
Call Sign	Channel, Class, Frequency	City of License	NAD-27 Lat./Lon.	State	ERP (kW)	Bearing (Degrees)	Antenna Field	Bearing ERP kW	Bearing HAAT	Distance (km)	
WZFT	282B 104.3 MHz	Baltimore	39-20-10 76-38-59	Md	13	157	0.827	8.9 ^①	366.7	43.09	64.9 F(50,50)
WAVA	286B 105.1 MHz	Arlington	38-53-30 77-07-55	Va	33	80.4	1	33.0	229.5	59.52	58.4 F(50,50)

Notes:

① According to the WZFT authorization, a directional antenna is used.

At the true azimuths of 150 and 160 degrees, the antenna field factors are 0.903 and 0.794 respectively.

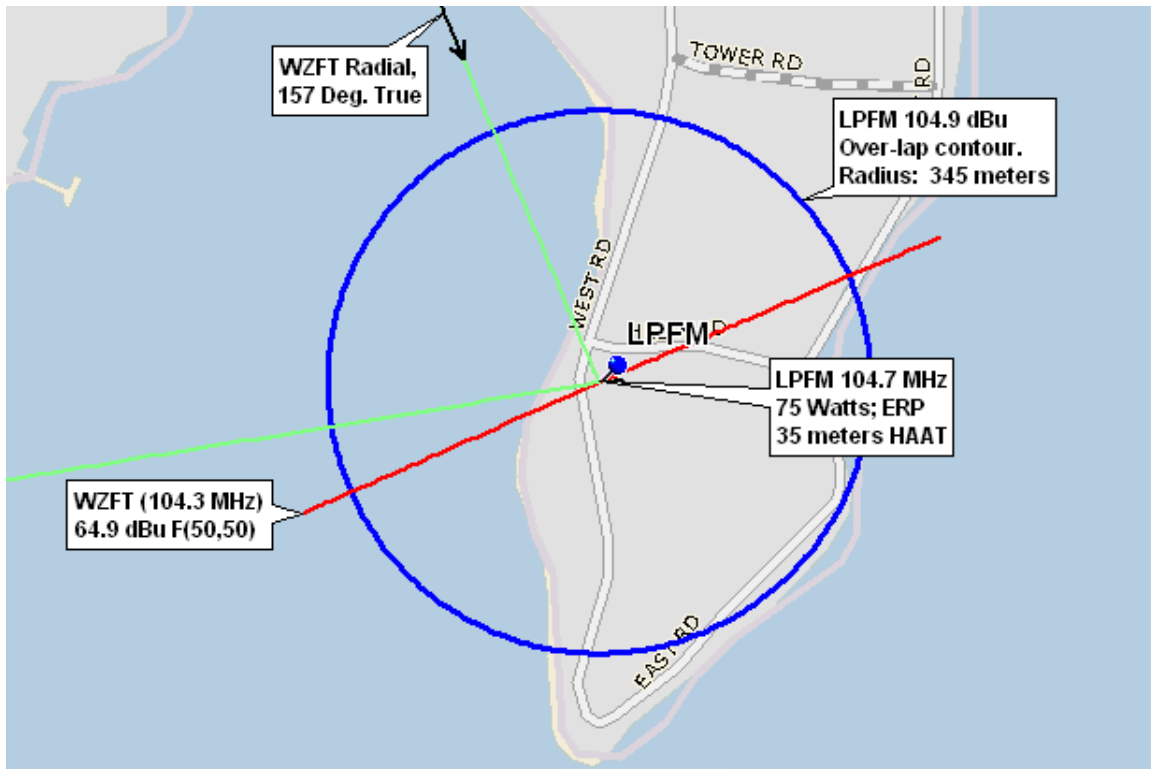
At 157 degrees (True Azimuth), it was determined, by linear interpolation, that the field factor of the antenna at the 157 degree radial from WZFT is 0.827.

Thus, the ERP from WZFT, in the direction of the proposed LPFM station, is $(0.827)^2 * 13 = 8.9$ kW.

Second Adjacent Channel Waiver Request and Statement.

Proposed; New LPFM Station
Maryland Hall Arts Center
Annapolis, Maryland
104.7 MHz; FM Channel 284

Figure 1: WZFT Overlap Contour



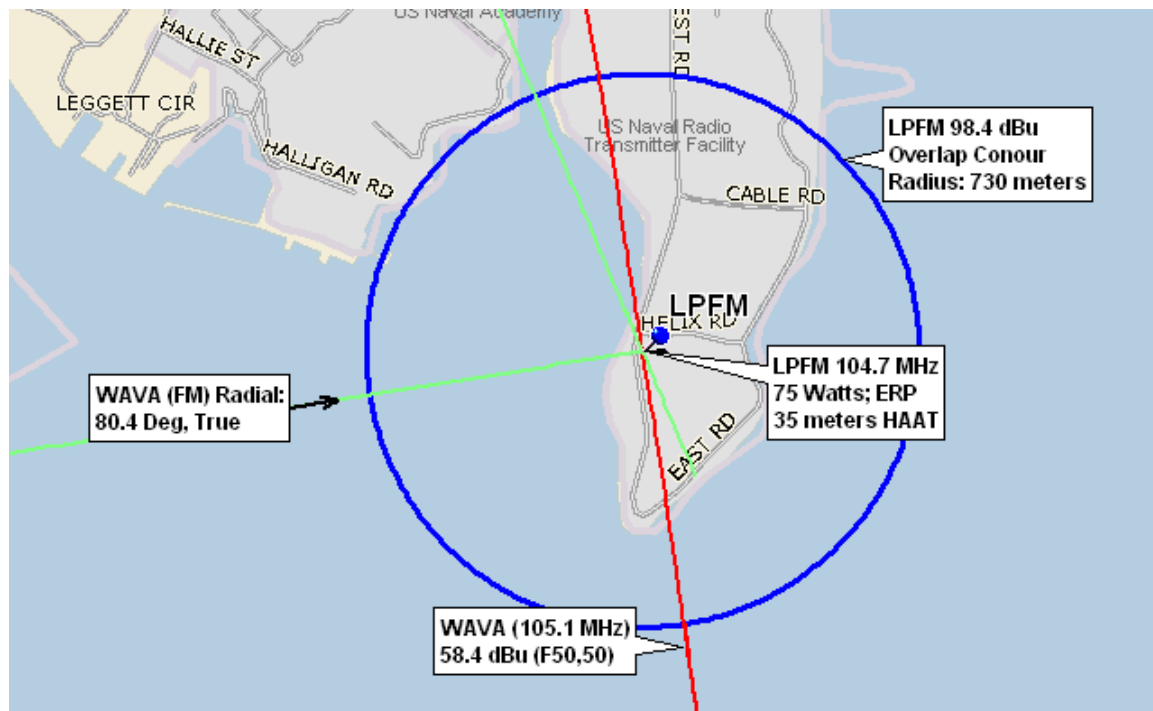
The 104.9 dBu contour, which overlaps the WZFT (104.3 MHz) 64.9 dBu contour encompasses uninhabited land on the Greenbury Peninsula and waters of the Severn River and Chesapeake Bay..

Refer to the satellite image in Figure 3 for an overview of this area.

Second Adjacent Channel Waiver Request and Statement.

Proposed; New LPFM Station
 Maryland Hall Arts Center
 Annapolis, Maryland
 104.7 MHz; FM Channel 284

Figure 2: WAVA-FM Overlap Contour.



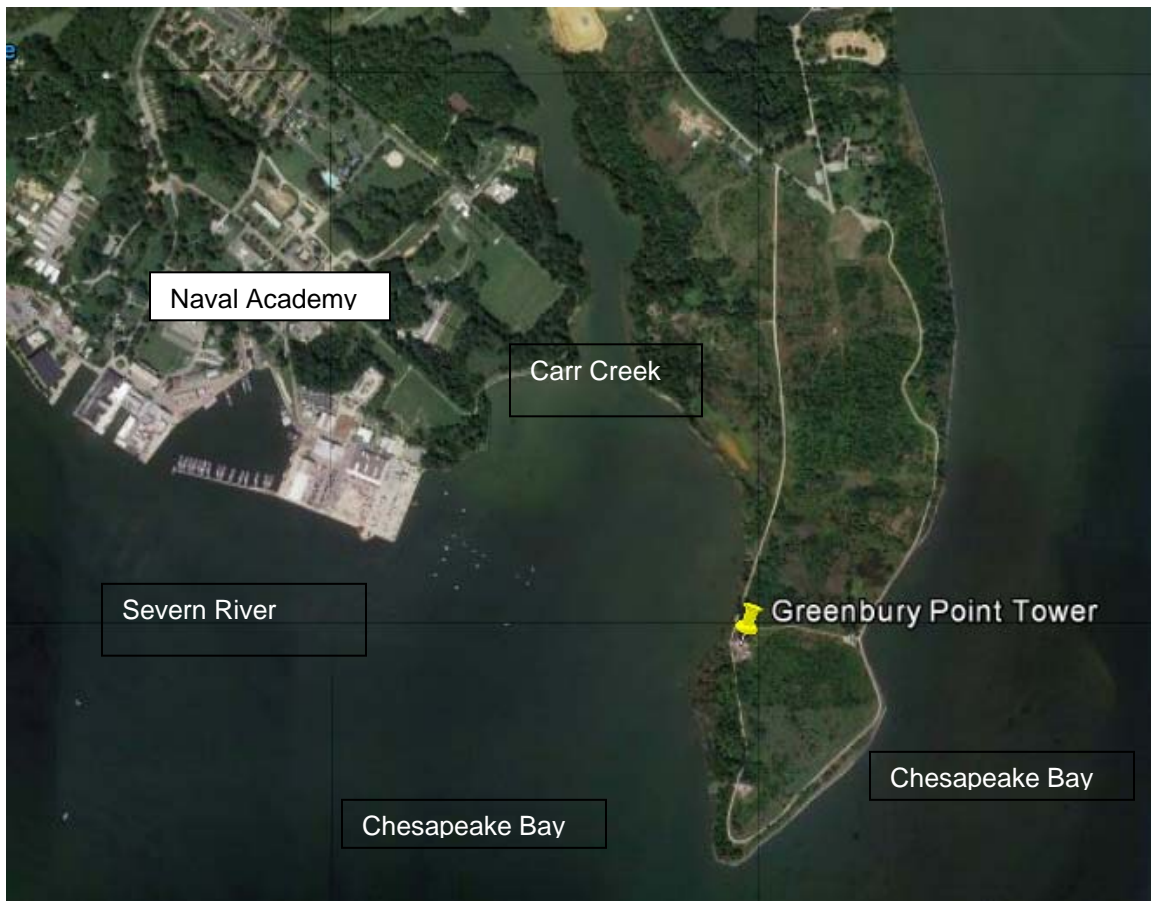
The 98.4 dBu contour (shown in **BLUE**), which overlaps the WAVA (105.1 MHz) 58.4 dBu contour, encompasses uninhabited land on the Greenbury Point Peninsula and waters of the Severn River, Carr Creek the Chesapeake Bay, and the uninhabited shoreline of the US Naval Academy.

Please refer to the satellite image in Figure 3 for an overview of this area..

Second Adjacent Channel Waiver Request and Statement.

**Proposed; New LPFM Station
Maryland Hall Arts Center
Annapolis, Maryland
104.7 MHz; FM Channel 284**

Figure 3: Greenbury Point Satellite Photo



-----End of Document-----