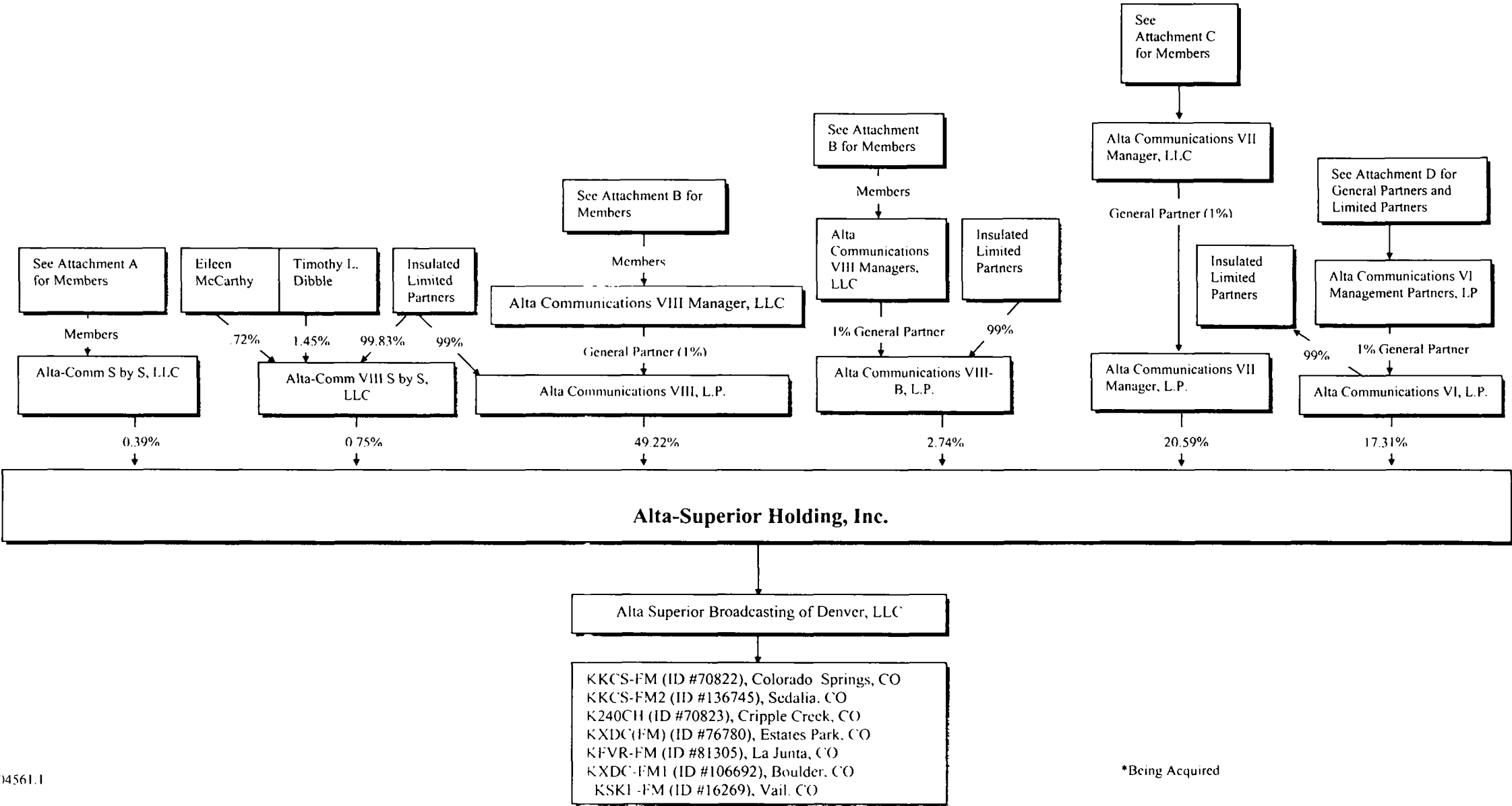


Superior Broadcasting of Denver, LLC



Alta-Comm S by S, LLC

Attachment A

The following are members of Alta-Comm S by S, LLC:

Members	Equity of Interest
William P. Egan	Member (13.77%)
Craig L. Burr	Member (13.77%)
Jean Deleage	Member (8.26%)
Jonathan A. Flint	Member (2.75%)
Craig L. Burr 1985 Childrens Trust	Member (13.77%)
Deleage Childrens Trust F/B/O Emmanuel Deleage	Member (2.065%)
Deleage Childrens Trust F/B/O Philippe Deleage	Member (2.065%)
Deleage Childrens Trust F/B/O Andre Deleage	Member (2.065%)
Deleage Childrens Trust F/B/O Michel Deleage	Member (2.065%)
William P. Egan 1985 Childrens Trust F/B/O William P. Egan, III	Member (3.44%)
William P. Egan 1985 Childrens Trust F/B/O Gregory J. Egan	Member (3.44%)
William P. Egan 1985 Childrens Trust F/B/O Mark P. Egan	Member (3.44%)
William P. Egan 1985 Childrens Trust F/B/O Kristin E. Reed	Member (3.44%)
Garrett P. Gruener	Member (0.69%)
Trust U/A 3/21/72 F/B/O Geoffrey R. Hoguet	Member (2.75%)
Gwendoline R. Hoguet Trust F/B/O Nancy H. Tilghman	Member (2.75%)
Daniel S. Janney	Member (0.83%)
Kingsley Pension Trust	Member (0.69%)
Le Seere	Member (1.38%)
Peter Looram	Member (5.51%)
Eileen McCarthy	Member (0.69%)
Brian W. McNeill	Member (2.75%)
James Francis Kenny IRA Rollover	Member (2.07%)
Guy Paul Nohra	Member (0.69%)
NorthStar Profit Sharing Trust F/B/O Terrance McGuire	Member (2.07%)
B.A. Ventures, Inc.	Member (2.75%)

Alta Communications VIII Managers, LLC

Attachment B

The following are members of Alta Communications VIII Managers, LLC:

Members	Equity Interest
Brian W. McNeill	Managing Member (20%)
Timothy L. Dibble	Manager Member (25%)
William P. Egan	Member (1.5720%)
Robert F. Benbow	Member (0.5%)
David E. Retik Trust	Member (7.5%)
Robert Emmert	Member (6.25%)
Philip L. Thompson	Member (6.25%)
B. Lane MacDonald	Member (6.25%)
Eileen McCarthy	Member (5%)
Patrick D. Brubaker	Member (1.25%)
William P. Egan 1998 Trust	Member (7.5%)
The Benbow Living Trust	Member (2%)
The Grace Margaret McNeill Gift Trust	Member (2.5%)
The Andrew McNeill Gift Trust	Member (2.5%)
William P. Egan 1985 Childrens Trust F/B/O William P. Egan, III	Member (1.500%)
William P. Egan 1985 Childrens Trust F/B/O Gregory J. Egan	Member (1.500%)
William P. Egan 1985 Childrens Trust F/B/O Mark P. Egan	Member (1.500%)
William P. Egan 1985 Childrens Trust F/B/O Kristin E. Reed	Member (1.500%)

Alta Communications VII Managers, LLC

Attachment C

The following are members of Alta Communications VII Managers, LLC:

Members	Equity of Interest
Robert F. Benbow	Managing Member (3.7500%)
Timothy L. Dibble	Managing Member (25.6250%)
Brian W. McNeill	Managing Member (25.6250%)
William P. Egan	Member (1.2500%)
Eileen McCarthy	Member (3.7500%)
David E. Retik Trust	Member (5.0%)
William P. Egan 1998 Trust	Member (13.7500%)
Benbow Investments, L.P.	Member (16.0420%)
The Benbow Living Trust	Member (2.7080%)
Robert Emmert	Member (1.2500%)
Philip L. Thompson	Member (1.2500%)

Alta Communications VI Management Partners, L.P.

Attachment D

The following are general partners and limited partners of Alta Communications VI Management Partners, LP:

General and Limited Partners	Equity of Interest
William P. Egan	Managing General Partner (4.0%)
Brian W. McNeill	Managing General Partner (22.5%)
Timothy L. Dibble	Managing General Partner (22.5%)
Robert F. Benbow	Managing General Partner (1.15%)
David E. Retik Trust	General Partner (2.5%)
Eileen McCarthy	General Partner (2.5%)
Burr Family Investment Company II, LLC	Limited Partner (5.0%)
Egan Family Investment Company, LLC	Limited Partner (18.50%)
The Benbow Living Trust	Limited Partner (21.35%)