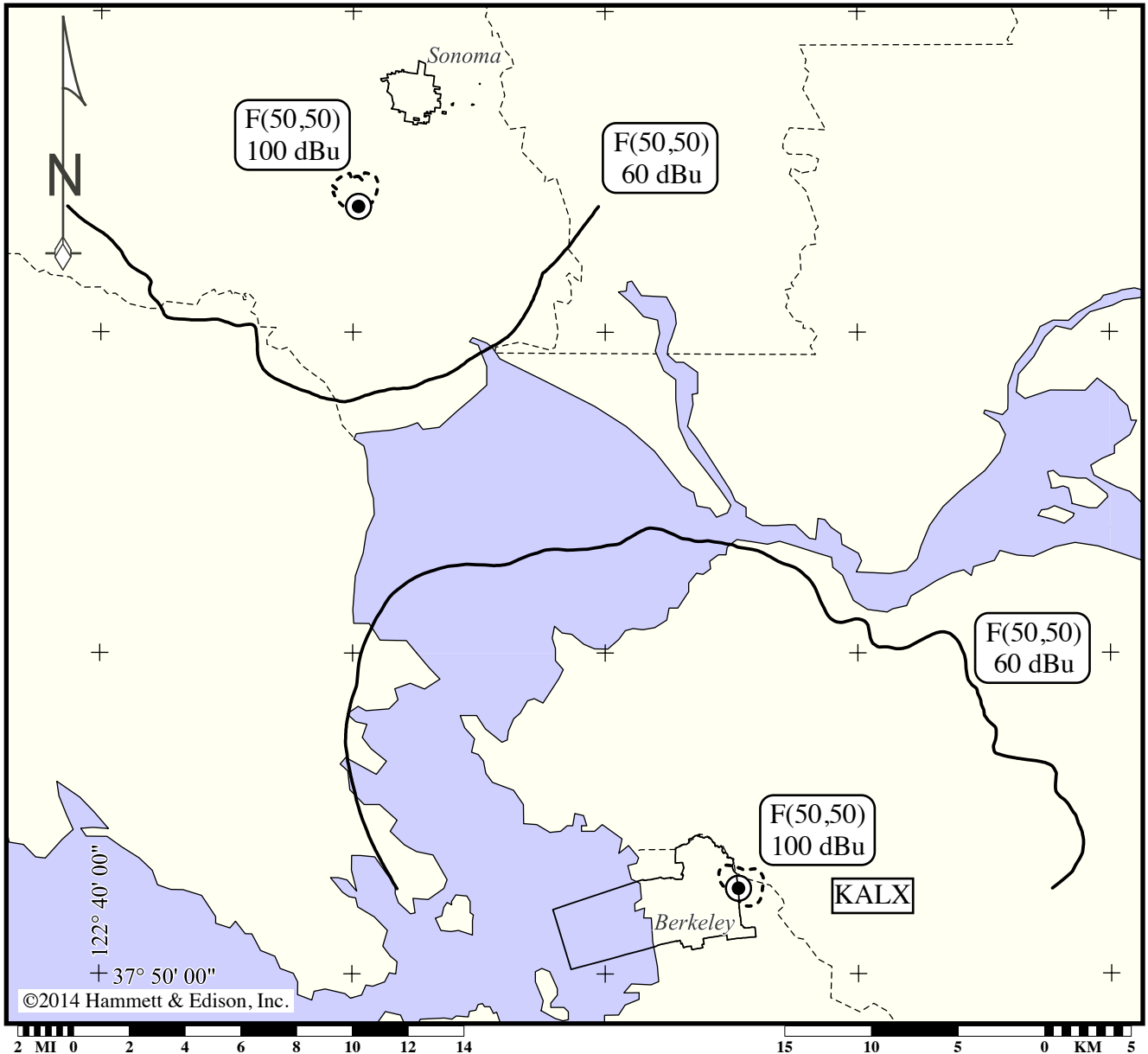


**Proposed KSVY versus
KALX, Channel 214A, Berkeley, California**

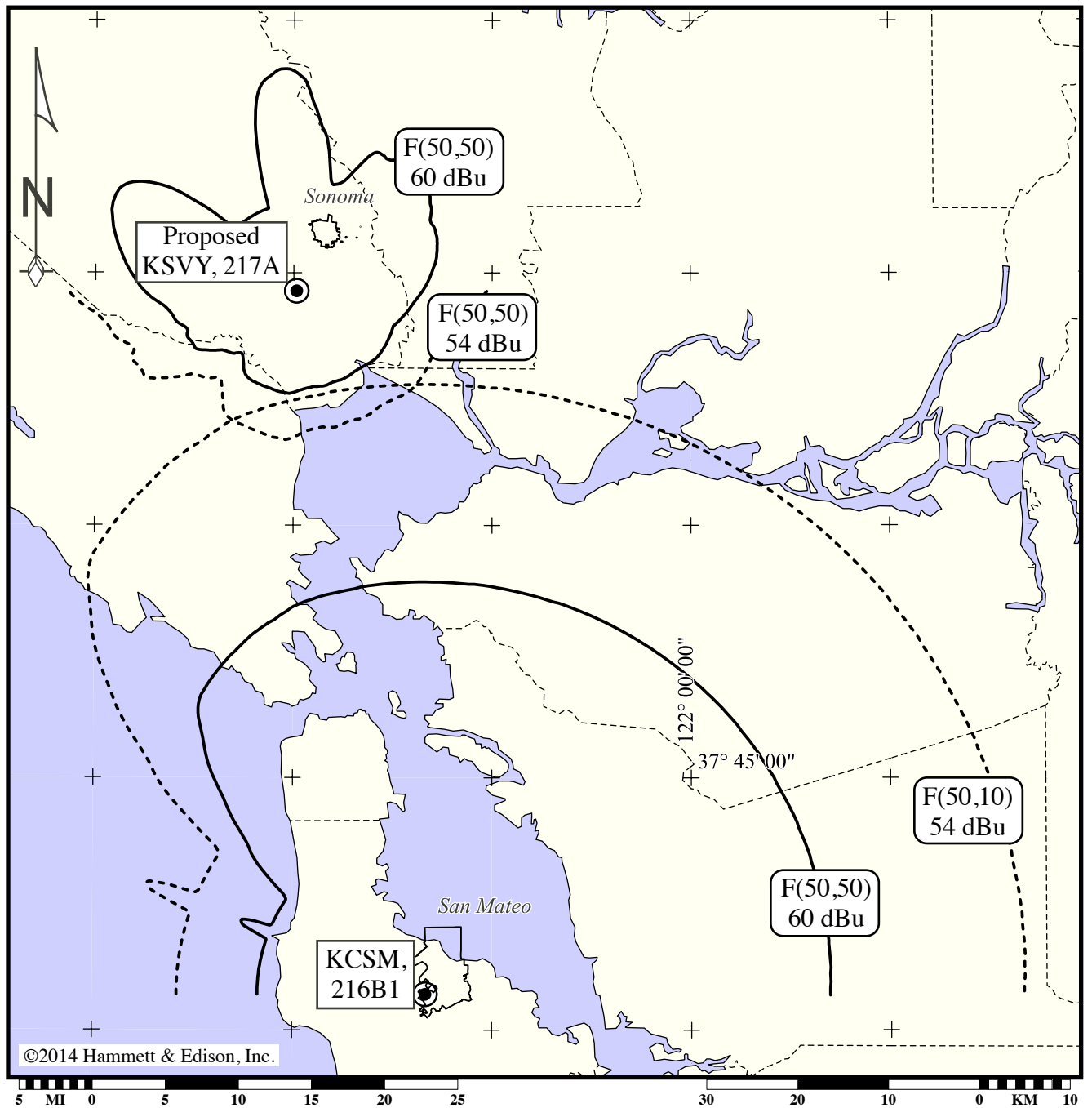


Lambert conformal conic map projection. Map data taken from Sectional Aeronautical Charts, published by the National Ocean Survey. Geographic coordinate marks shown at 10-minute increments. City limits shown taken from U.S. Census Bureau TIGER/Line 2000 data.



FM Station KSVY • Channel 217A, 91.3 MHz • Sonoma, California

Proposed KSVY versus
KCSM, Channel 216B1, San Mateo, California



Lambert conformal conic map projection. Map data taken from Sectional Aeronautical Charts, published by the National Ocean Survey. Geographic coordinate marks shown at 15-minute increments. City limits shown taken from U.S. Census Bureau TIGER/Line 2000 data.

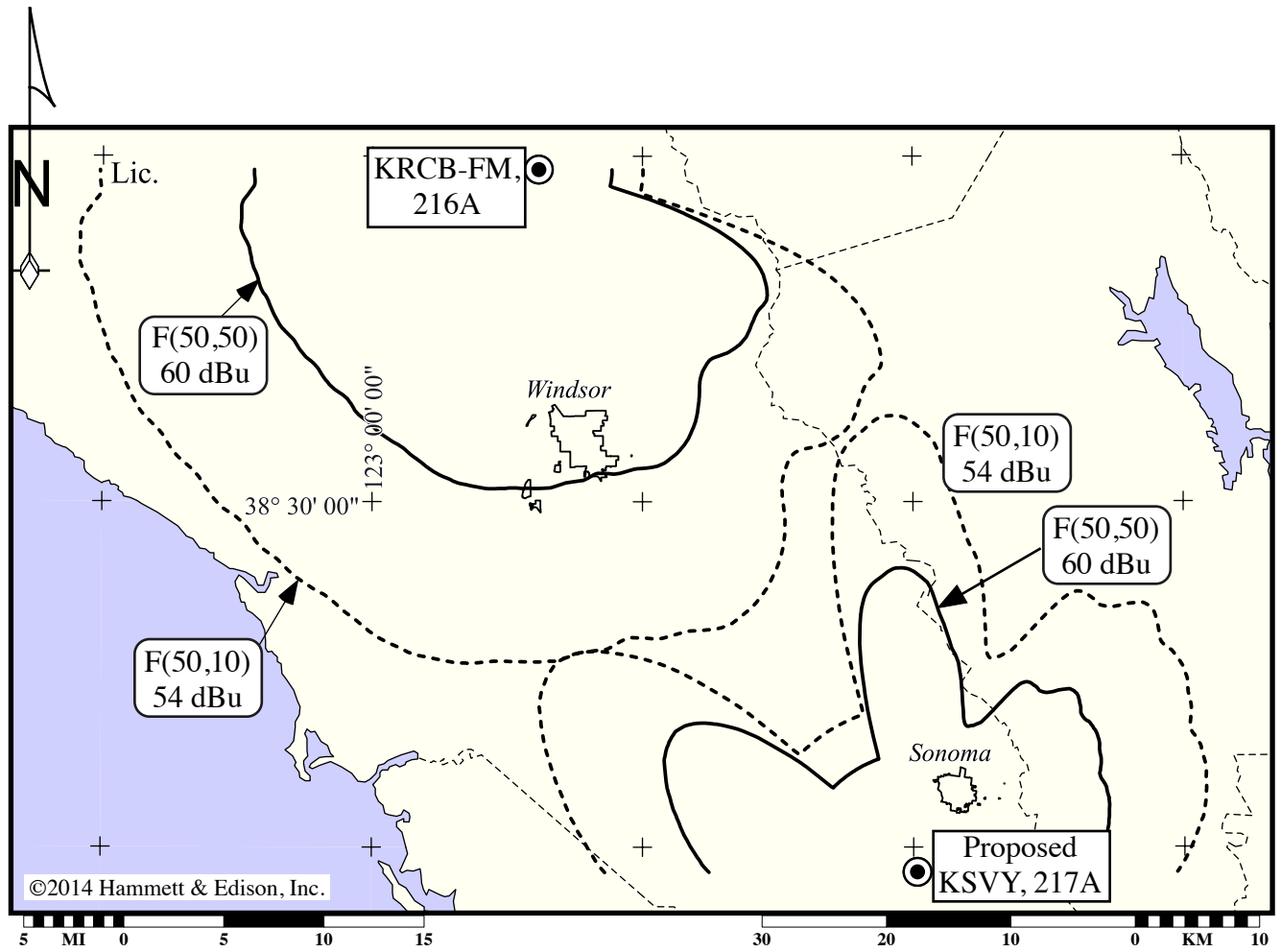


HAMMETT & EDISON, INC.
CONSULTING ENGINEERS
SAN FRANCISCO

140425
Exhibit 18B

FM Station KSVY • Channel 217A, 91.3 MHz • Sonoma, California

Proposed KSVY versus
KRCB-FM, Channel 216A, Windsor, California



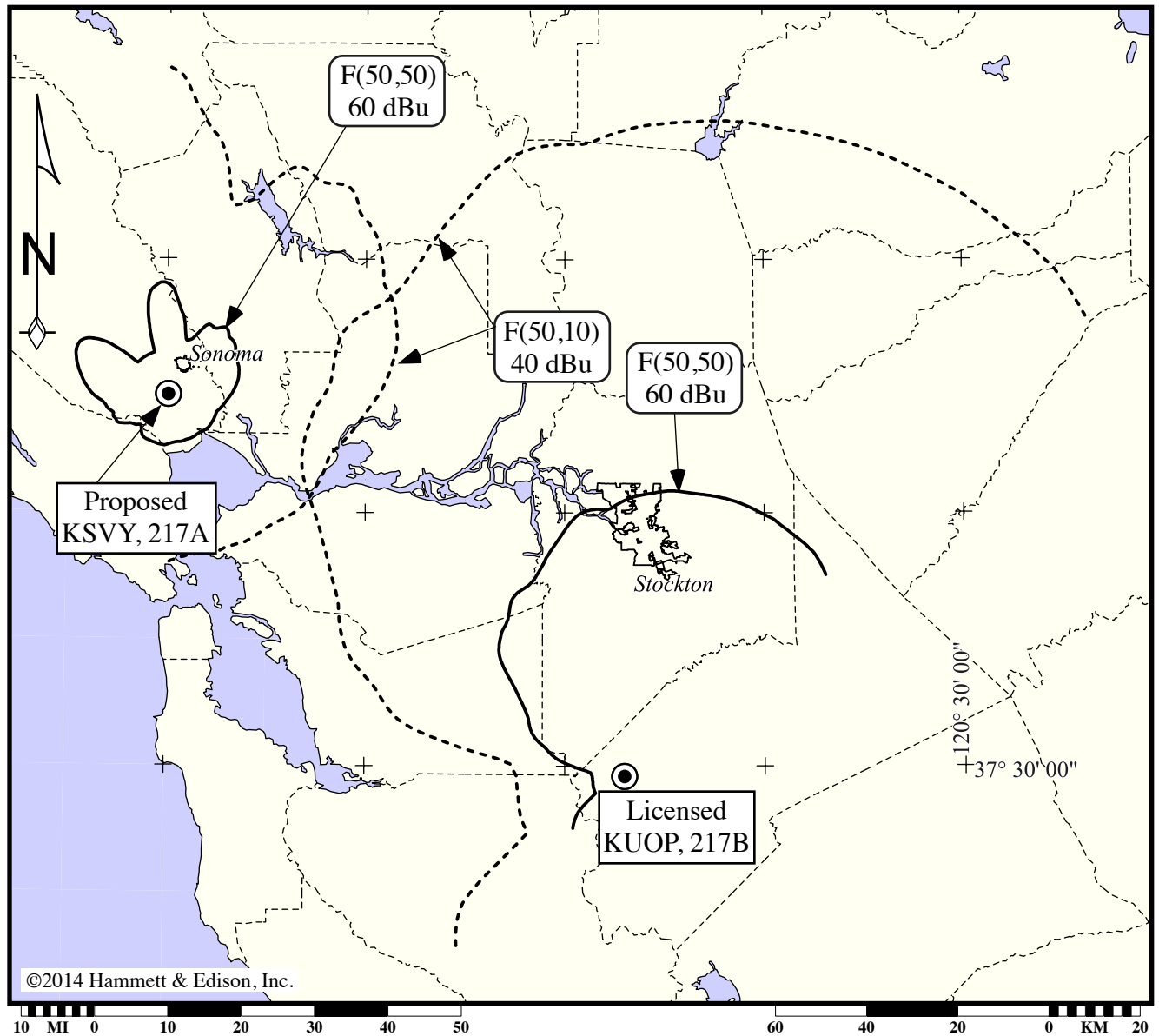
Lambert conformal conic map projection. Map data taken from Sectional Aeronautical Charts, published by the National Ocean Survey. Geographic coordinate marks shown at 15-minute increments. City limits shown taken from U.S. Census Bureau TIGER/Line 2000 data.



HAMMETT & EDISON, INC.
CONSULTING ENGINEERS
SAN FRANCISCO

140425
Exhibit 18C

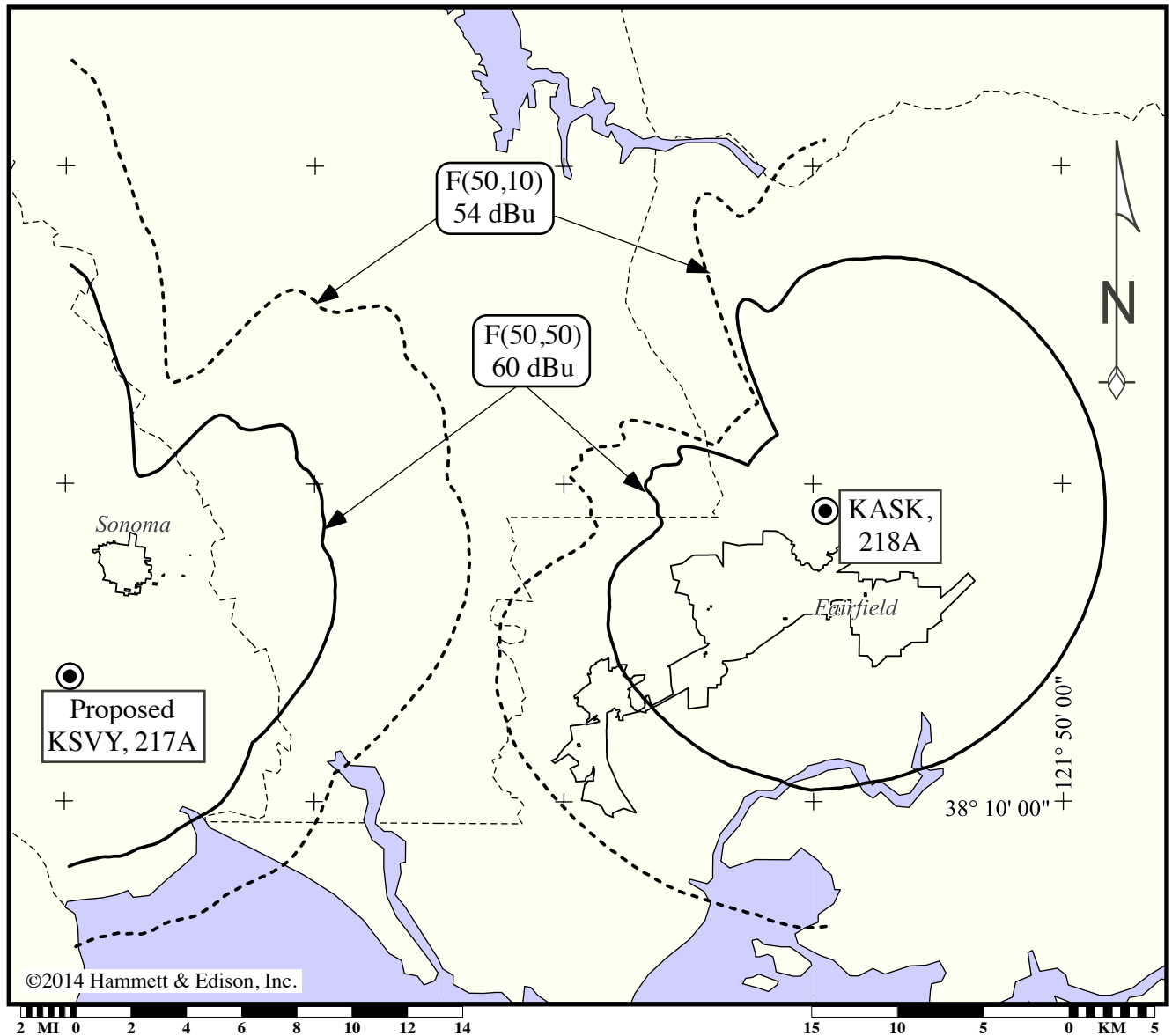
**Proposed KSVY versus
KUOP, Channel 217B, Stockton, California**



Lambert conformal conic map projection. Map data taken from Sectional Aeronautical Charts, published by the National Ocean Survey. Geographic coordinate marks shown at 30-minute increments. City limits shown taken from U.S. Census Bureau TIGER/Line 2000 data.

FM Station KSVY • Channel 217A, 91.3 MHz • Sonoma, California

Proposed KSVY versus
KASK, Channel 218A, Fairfield, California



Lambert conformal conic map projection. Map data taken from Sectional Aeronautical Charts, published by the National Ocean Survey. Geographic coordinate marks shown at 10-minute increments. City limits shown taken from U.S. Census Bureau TIGER/Line 2000 data.

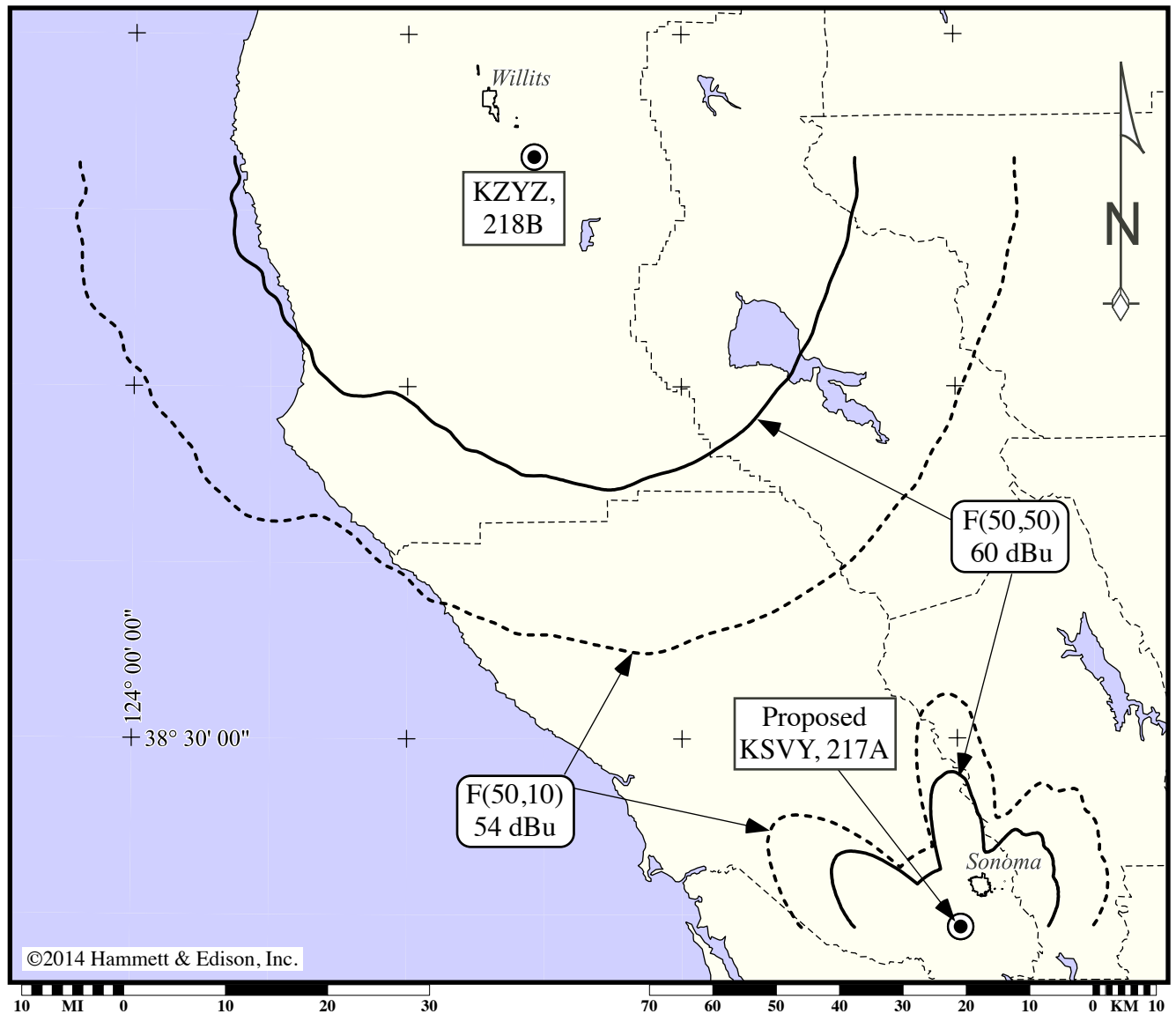


HAMMETT & EDISON, INC.
CONSULTING ENGINEERS
SAN FRANCISCO

140425
Exhibit 18E

FM Station KSVY • Channel 217A, 91.3 MHz • Sonoma, California

Proposed KSVY versus
KZYZ, Channel 218B, Willits, California



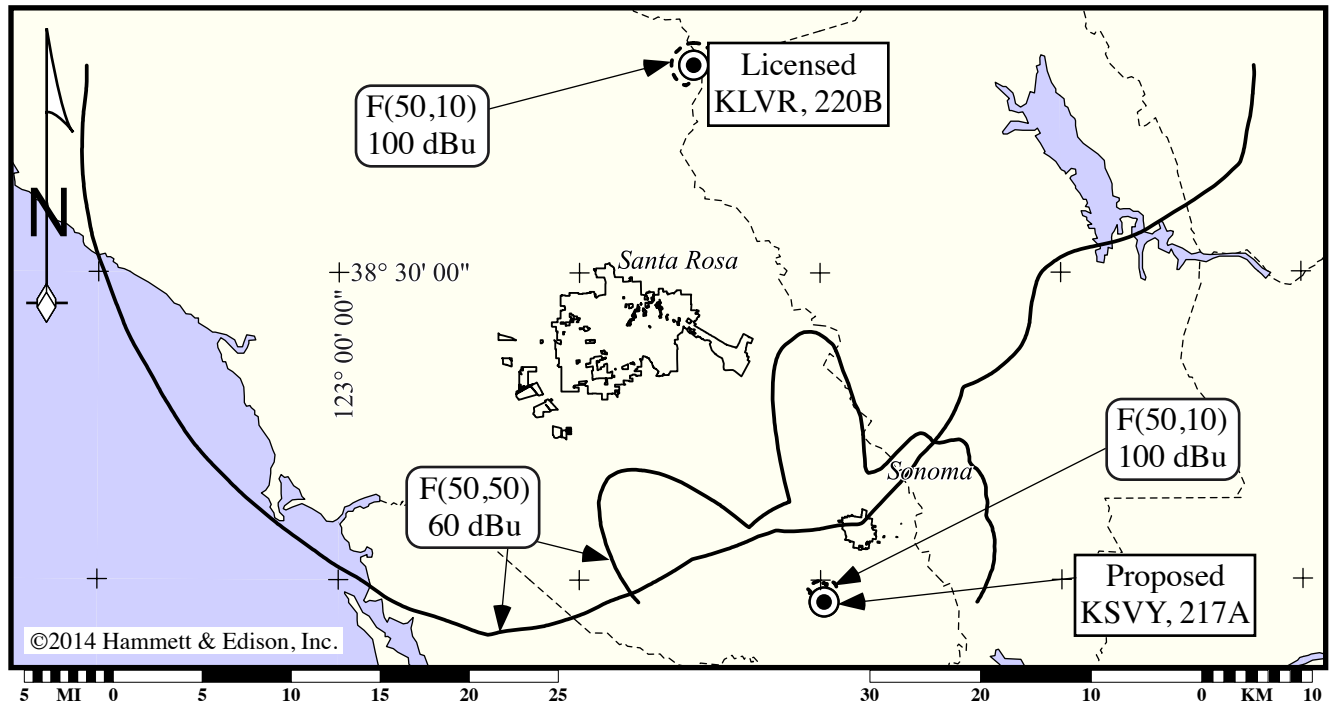
Lambert conformal conic map projection. Map data taken from Sectional Aeronautical Charts, published by the National Ocean Survey. Geographic coordinate marks shown at 30-minute increments. City limits shown taken from U.S. Census Bureau TIGER/Line 2000 data.



HAMMETT & EDISON, INC.
CONSULTING ENGINEERS
SAN FRANCISCO

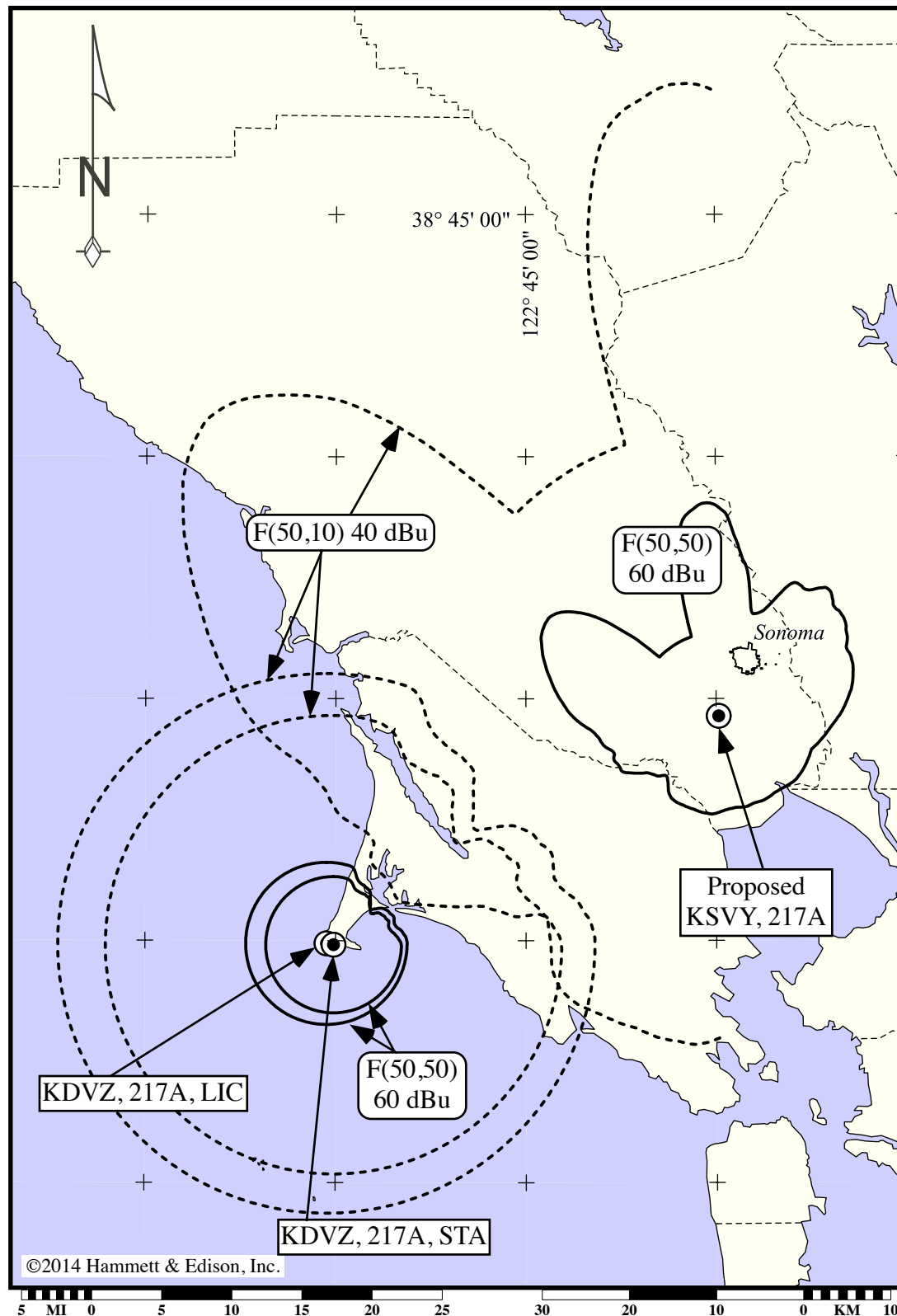
140425
Exhibit 18F

**Proposed KSVY versus
KLVR, Channel 220B, Santa Rosa, California**



Lambert conformal conic map projection. Map data taken from Sectional Aeronautical Charts, published by the National Ocean Survey. Geographic coordinate marks shown at 15-minute increments. City limits shown taken from U.S. Census Bureau TIGER/Line 2000 data.

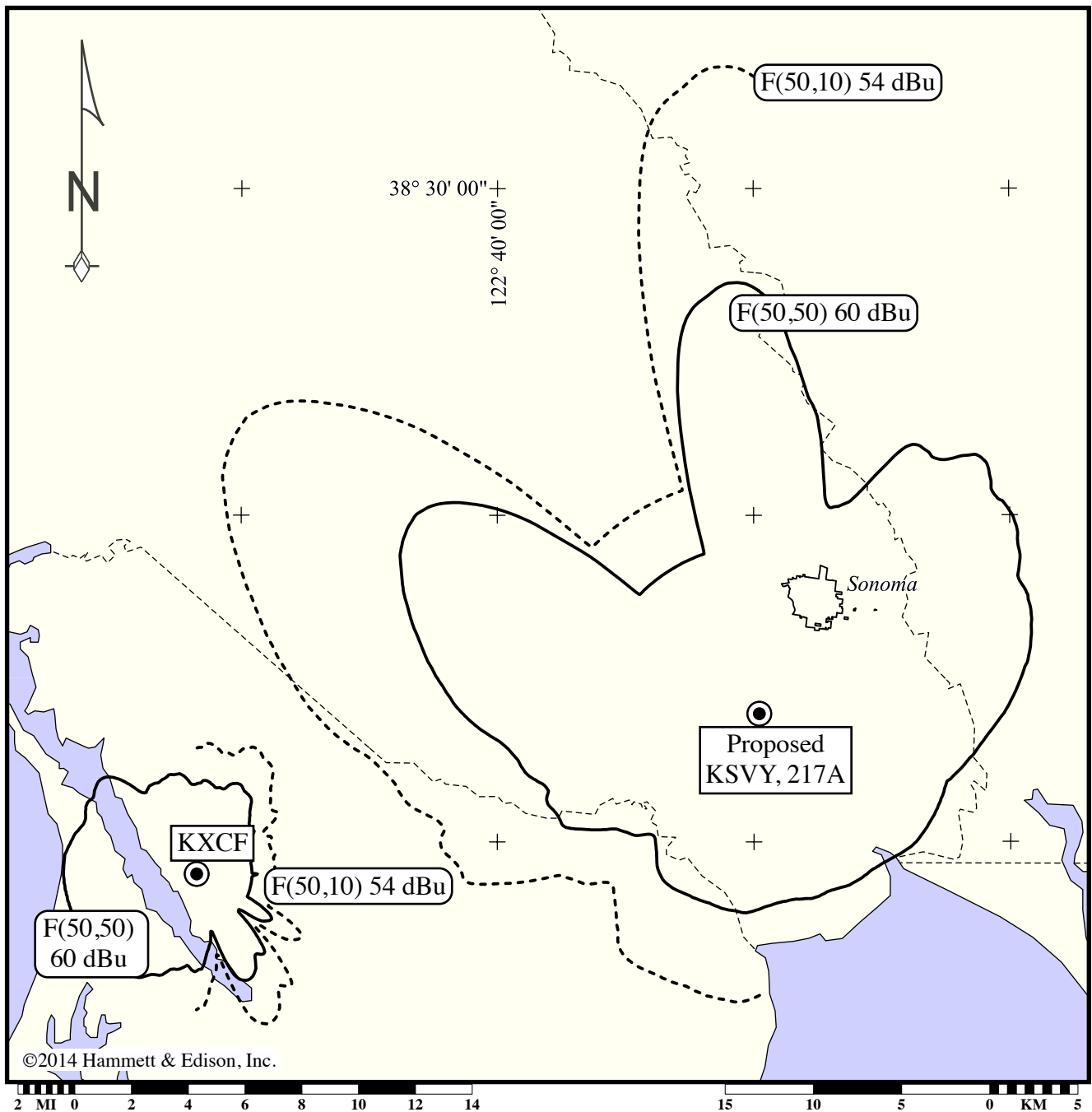
Proposed KSVY versus
KDVZ, Channel 217A, Point Reyes, California



Lambert conformal conic map projection. Map data taken from Sectional Aeronautical Charts, published by the National Ocean Survey. Geographic coordinate marks shown at 15-minute increments. City limits shown taken from U.S. Census Bureau TIGER/Line 2000 data.



Proposed KSVY versus
KXCF, Channel 218A, Marshall, California

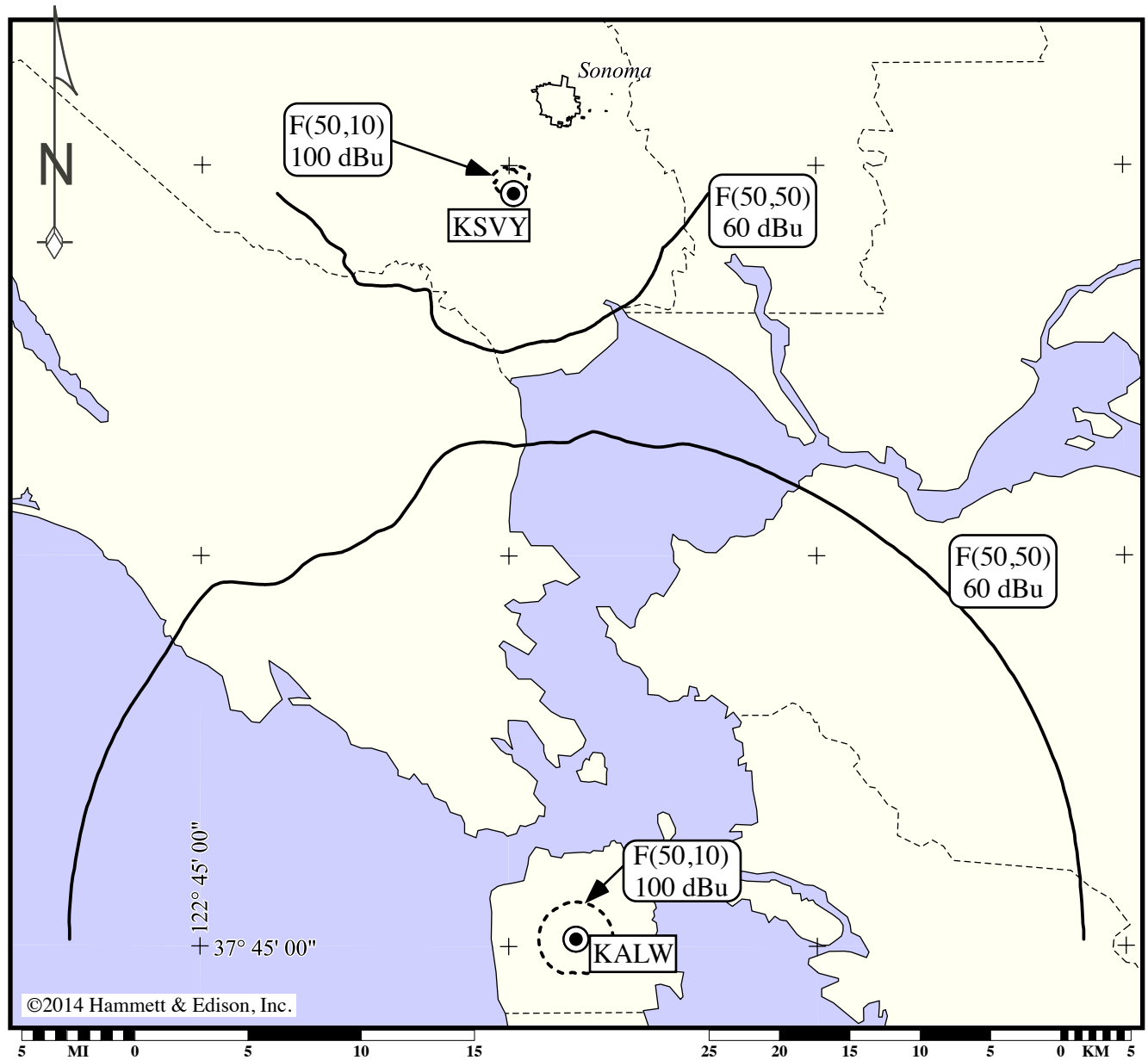


Lambert conformal conic map projection. Map data taken from Sectional Aeronautical Charts, published by the National Ocean Survey. Geographic coordinate marks shown at 10-minute increments. City limits shown taken from U.S. Census Bureau TIGER/Line 2000 data.



FM Station KSVY • Channel 217A, 91.3 MHz • Sonoma, California

Proposed KSVY versus
KALW, Channel 219BI, San Francisco, California



Lambert conformal conic map projection. Map data taken from Sectional Aeronautical Charts, published by the National Ocean Survey. Geographic coordinate marks shown at 15-minute increments. City limits shown taken from U.S. Census Bureau TIGER/Line 2000 data.



HAMMETT & EDISON, INC.
CONSULTING ENGINEERS
SAN FRANCISCO

140425
Exhibit 18J