

## **EXHIBIT 12**

**Waiver Request of Section 74.1204**  
Yakima WA K218CX 28 Watts ERP  
Calvary Chapel of Twin Falls, Inc. 7/08

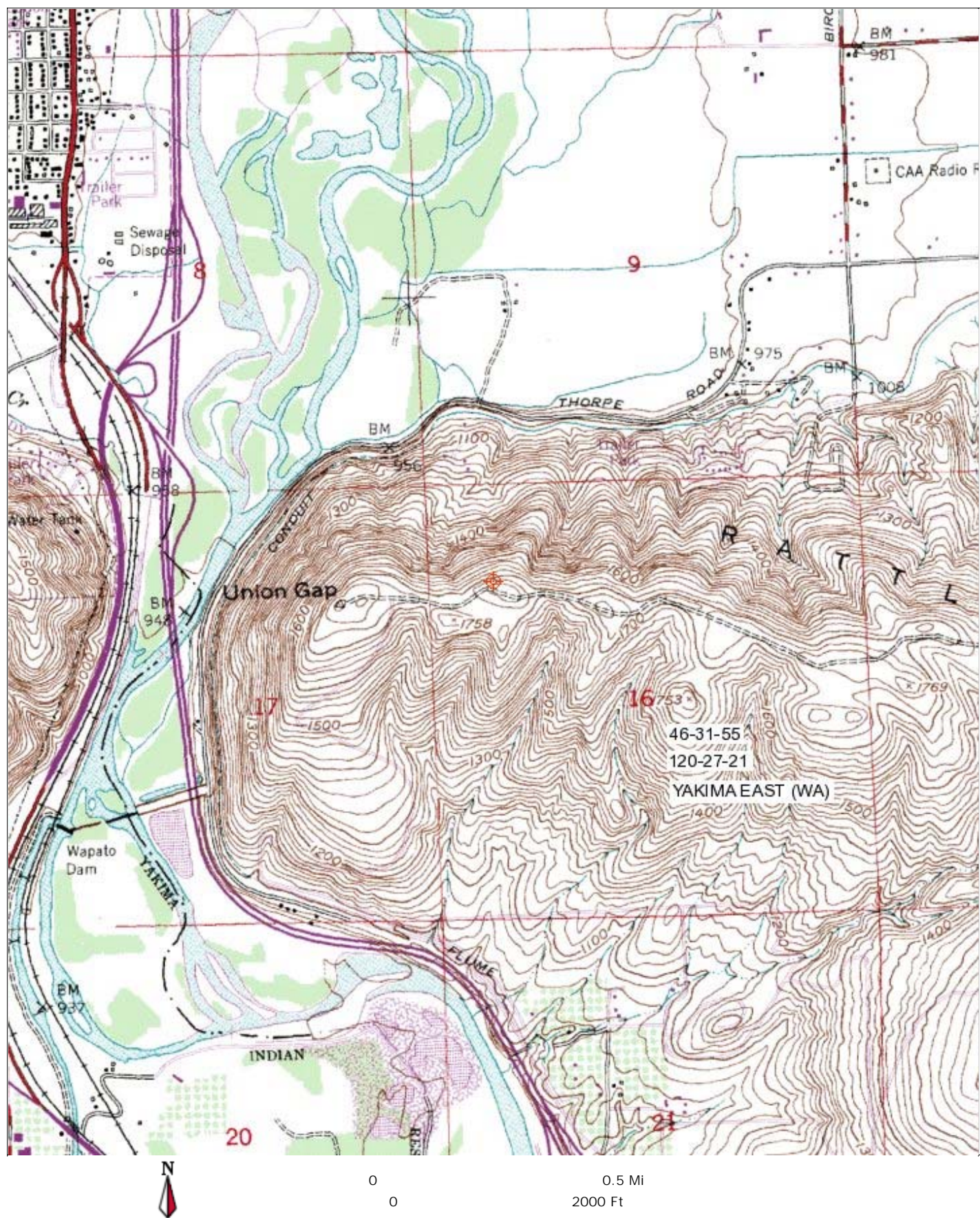
The proposed site is contained entirely inside the service contour of second-adjacent stations KYPL Yakima and KDNA Yakima

### **KYPL**

The proposed site is contained entirely inside the service contour of second-adjacent station KYPL, 216C1, 26kW, Yakima, WA. The level of least arriving protected F(50,50) signal at the proposed transmitter site is 104.6-dBu. Using the Undesired-to-Desired method for calculating proposed interference, the interfering contour with respect to KYPL is 144.6-dBu (free-space contour method employed). The interfering signal would, in the worst case at the maximum radial, extend 2 meters from the center of radiation, which is proposed at 28 meters AGL. This tower is located in a very sparsely populated area and attached is a section of the USGS Yakima East (WA) Quadrangle. There are no residences, businesses or roads that are located within the interfering contour, which does not touch the ground, and Calvary Chapel of Twin Falls, Inc. respectfully requests a waiver of the FM translator contour overlap regulations with respect to second-adjacent channel station KYPL.

### **KDNA**

The proposed site is contained entirely inside the service contour of second-adjacent station KDNA, 220C1, 18.5kW, Yakima, WA. The level of least arriving protected F(50,50) signal at the proposed transmitter site is 102.7-dBu. Using the Undesired-to-Desired method for calculating proposed interference, the interfering contour with respect to KDNA is 142.7-dBu (free-space contour method employed). The interfering signal would, in the worst case at the maximum radial, extend 3 meters from the center of radiation, which is proposed at 28 meters AGL. This tower is located in a very sparsely populated area and attached is a section of the USGS Yakima East (WA) Quadrangle. There are no residences, businesses or roads that are located within the interfering contour, which does not touch the ground, and Calvary Chapel of Twin Falls, Inc. respectfully requests a waiver of the FM translator contour overlap regulations with respect to second-adjacent channel station KDNA.



Contour.out

TERRAIN AND CONTOUR DATA - CANADIAN COMPLIANCE  
 K218CX YAKIMA, WA  
 CALVARY CHAPEL OF TWIN FALLS, INC.

JULY 2008 MINOR MODIFICATION OF  
 UNDERLYING CONSTRUCTION PERMIT  
 N. Lat. = 463155.0 W. Lng. = 1202721.0  
 HAAT and Distance to Contour - FCC Method - USGS 03 SEC

Azi .	AV EL	HAAT	ERP kW	dBk	Fi el d	34-F1
000	401.5	151.5	0.0280	-15.53	1.000	43.27
030	522.0	31.0	0.0280	-15.53	1.000	19.47
060	460.5	92.5	0.0280	-15.53	1.000	34.44
090	388.1	164.9	0.0280	-15.53	1.000	44.84
120	422.0	131.0	0.0280	-15.53	1.000	40.75
150	268.6	284.4	0.0280	-15.53	1.000	57.16
180	267.1	285.9	0.0280	-15.53	1.000	57.29
210	276.1	276.9	0.0280	-15.53	1.000	56.51
240	331.9	221.1	0.0280	-15.53	1.000	51.39
270	487.6	65.4	0.0280	-15.53	1.000	28.41
300	350.7	202.3	0.0280	-15.53	1.000	49.25
330	363.1	189.9	0.0280	-15.53	1.000	47.76

Ave EI = 378.27 M HAAT= 174.73 M AMSL= 553



Calvary Chapel Of Twin Falls, Inc.

K218CX YAKIMA, WA

REFERENCE  
46 31 55.0 N.  
120 27 21.0 W.

CH# 218D - 91.5 MHz, Pwr= 0.028 kW, HAAT= 174.7 M, COR= 553 M  
Average Protected F(50-50)= 10.02 km

DISPLAY DATES  
DATA 07-16-08  
SEARCH 07-22-08

CH CITY	CALL	TYPE STATE	ANT STATE	AZI <--	DI ST FILE #	LAT LNG	PWR(kW) HAAT(M)	INT(km) COR(M)	PRO(km) LICENSEE	*IN* (Overlap in km)	*OUT*
216C1 Yakima	KYPL	LIC WA	_CX	116.4 296.4	4.66 BLED20021217ABO	46 30 48.0 120 24 05.0	26.000 243	6.7 627	57.6 Growing Christian Foundati	-10.29*	-53.27*
220C1 Yakima	KDNA	LIC WA	_C_	265.2 85.1	4.75 BMLED20060906ABQ	46 31 42.0 120 31 03.0	18.500 280	5.9 641	53.5 Northwest Communities Educ	-5.17*	-49.08*
218D Yakima	K218CX	LIC WA	_C_	272.0 92.0	2.67 BLFT20080122APP	46 31 58.0 120 29 26.0	0.028	31.8 565	9.5 Calvary Chapel Of Twin Fal	-36.30*	-30.91*
218C2 Moses Lake	KLWS	LIC WA	_C_	37.0 217.7	109.48 BLED19970609KD	47 18 50.0 119 34 55.0	7.200 209	116.5 727	48.2 Washington State Universi t	-12.12*	44.85
218C0 Portland	KOPB-FM	LIC OR	_C_	238.4 56.8	209.83 BLED20030213AAI	45 31 21.0 122 44 45.0	73.000 470	184.0 561	84.1 Oregon Public Broadcasting	14.34	87.48
218D Cle Elum	K218DF	LIC WA	_V_	340.0 159.8	74.70 BLFT20000815ACS	47 09 46.0 120 47 36.0	0.026 60	35.6 904	10.7 Calvary Chapel Of Twin Fal	28.37	28.33
06-2C Spokane	KHQT	LI WA	_HY	62.9 245.2	266.89 BMLCT19860805KF	47 34 52.0 117 17 47.0	87.100 653	1373	26.0 Khq, Incorporated	131.5R	135.4M
06+T The Dalles	K06NI	LI OR	_N	209.4 28.9	104.46 BLTVL20050309ACR	45 42 43.0 121 06 58.0	0.250 807	977	26.0 Michael Mattson	29.7R	74.8M
06+2C Portland	K01N	LI OR	_HY	238.1 56.5	209.37 BLCT20041216ADG	45 30 58.0 122 43 58.0	100.000 491	569	26.0 Nvt Portland Licensee, LI c	131.5R	77.9M
06NT Baker Flats, Ect	K59BF	AP WA	D_N	5.4 185.5	107.40 BDI STTV20080225AAD	47 29 37.0 120 19 14.0	0.010 527	727	3.6 Apple Valley Tv Associatio	6.4R	101.0M

Terrain database is USGS 03 SEC Distance + R = 73.215 or FCC Spacings in KM, Distance + M = Margin in KM  
Contour distances are on direct line to and from reference station. Reference zone = . With 3rd Adj Channels.  
Ant Column: (D= DA Standard, Z= DA 73.215, N= Not DA 73.215, \_= Omni), Polarization (C,H,V,E), Beamtilt(Y,N,X)  
"\*"affixed to 'IN' or 'OUT' values = site inside protected contour.