

REV.	MADE BY CHECKED BY	DATE	CHANGE

This drawing is loaned subject to the express understanding and agreement that the drawing and information therein contained are, and shall remain the property of PSI, and will not be otherwise utilized or disposed of, directly or indirectly, and will not be used in whole or in part or assist in making or finish any information for the making of drawings, prints or other reproductions hereof, or for the design or making of any item, parts, object, apparatus or parts thereof, except upon the written permissions of PSI first obtained. The acceptance of this drawing will be construed as an acceptance of the forgoing agreement.

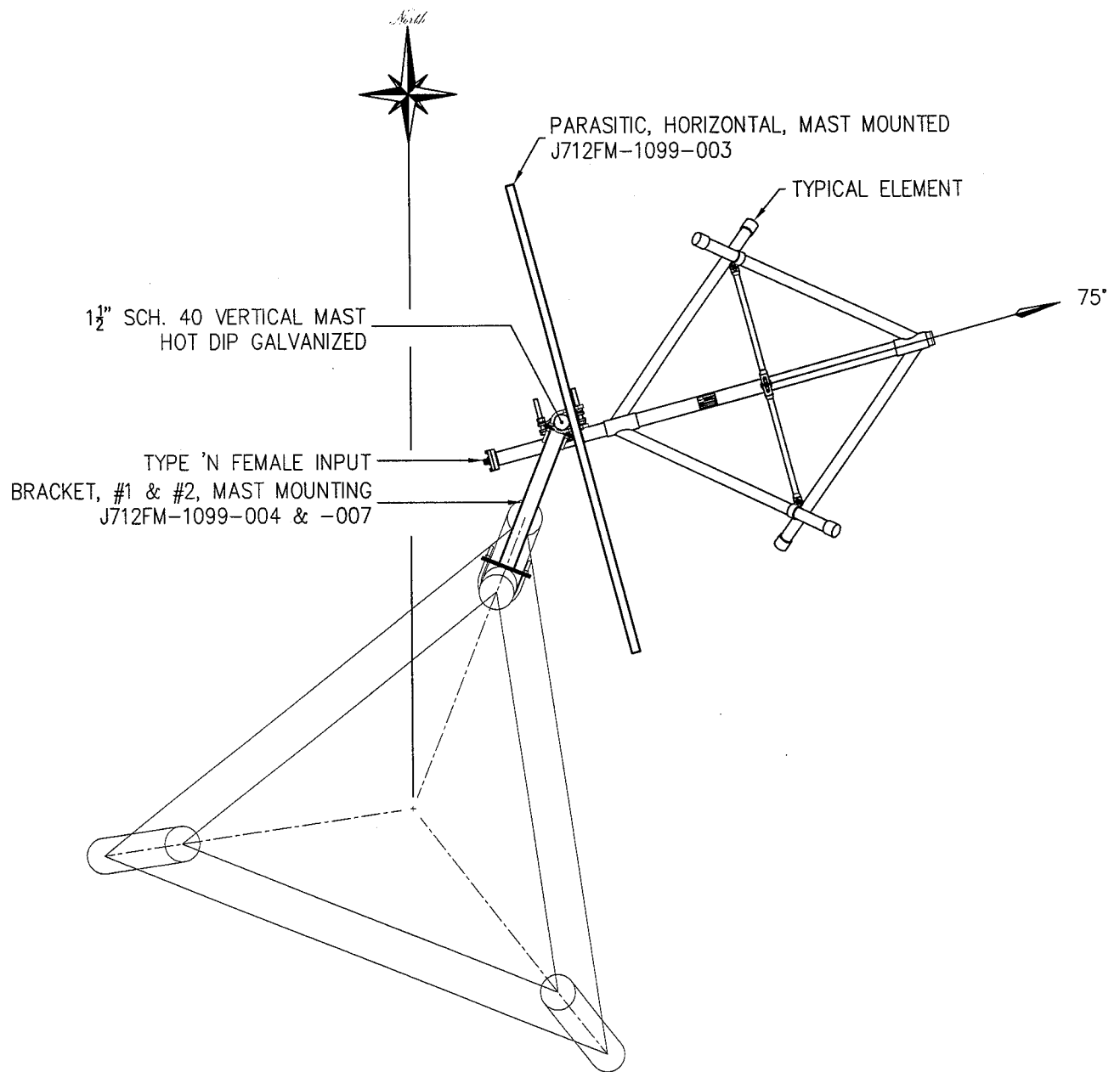
SIZE
A

PROPAGATION SYSTEMS, INC.

Ebensburg, Pennsylvania USA 814-472-5540

ELEVATIONS AND SPECIFICATIONS			
MODEL:	PSIFML-1A-DA	DRAWN BY:	D.G. Kellar
CHANNEL/ FREQUENCY:	92.9 MHz	APPROVED BY:	
SCALE:	1:20	DRAWING NO.:	J712FM-1099-001
		DATE:	7/26/12
		REV.	

C:\WD\FOUR\PMU\1099-0712FM\J712FM-1099-001.dwg, 8/30/2012 12:34:54 PM, Top Layer, 1:20 PCL 6



PROPAGATION SYSTEMS, INC.

Ebensburg, Pennsylvania USA 814-472-5540

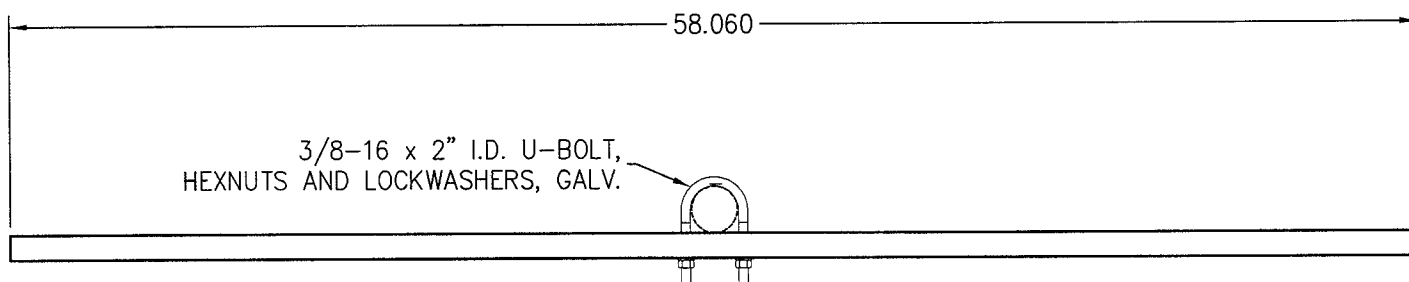
PLAN VIEW AND ORIENTATION

This drawing is loaned subject to the express understanding and agreement that the drawing and information therein contained are, and shall remain the property of PSI, and will not be otherwise utilized or disposed of, directly or indirectly, and will not be used in whole or in part or assist in making or finish any information for the making of drawings, prints or other reproductions hereof, or for the design or making of any item, parts, object, apparatus or parts thereof, except upon the written permissions of PSI first obtained. The acceptance of this drawing will be construed as an acceptance of the forgoing agreement.

SIZE

A

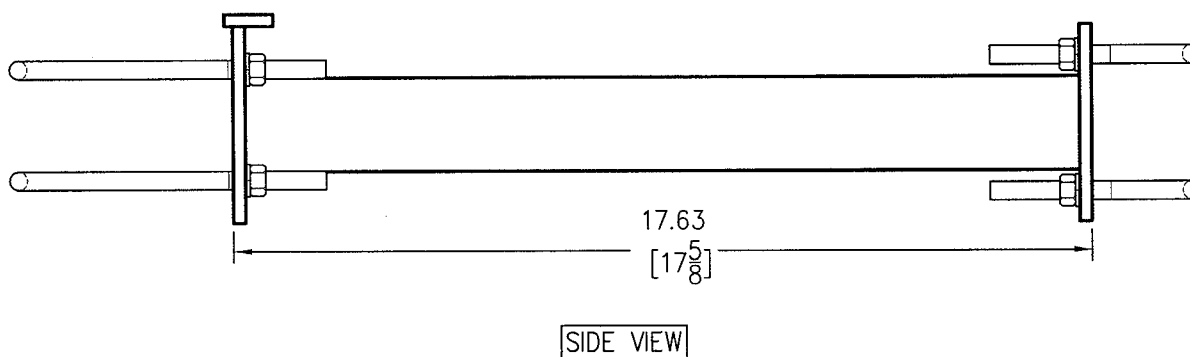
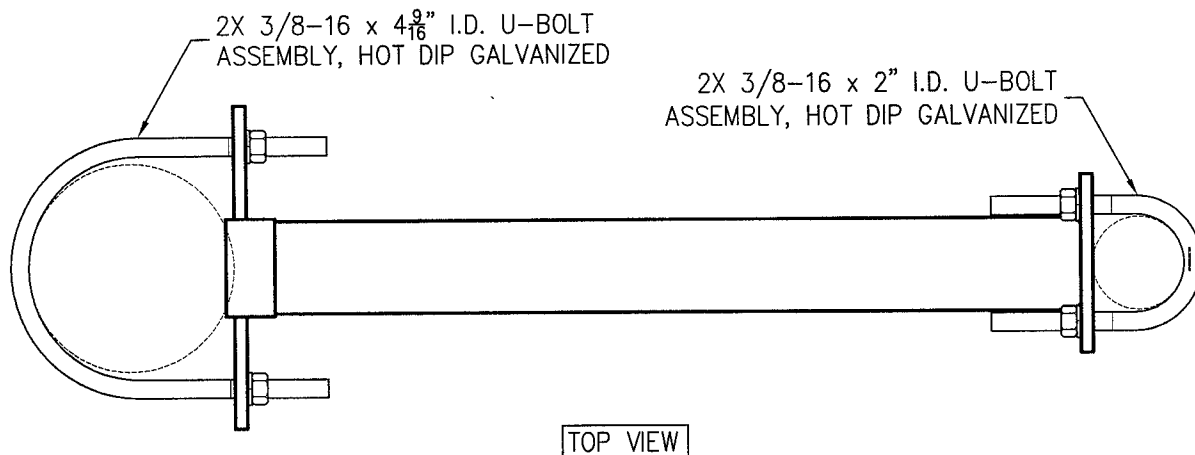
MODEL:	PSIFML-1A-DA	DRAWN BY:	D.G. Kellar	DATE:	8/28/12
CHANNEL/ FREQUENCY:	92.9 MHz	APPROVED BY:		DATE:	
SCALE:	1:20	DRAWING NO.:	J712FM-1099-002	REV.	



NOTES:

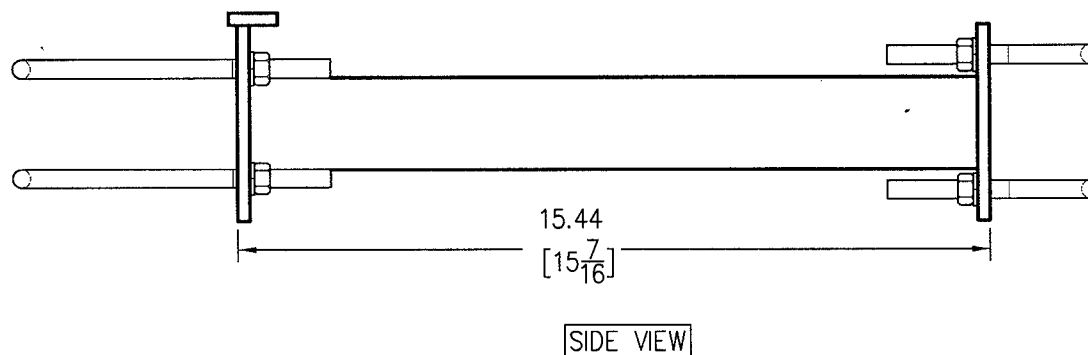
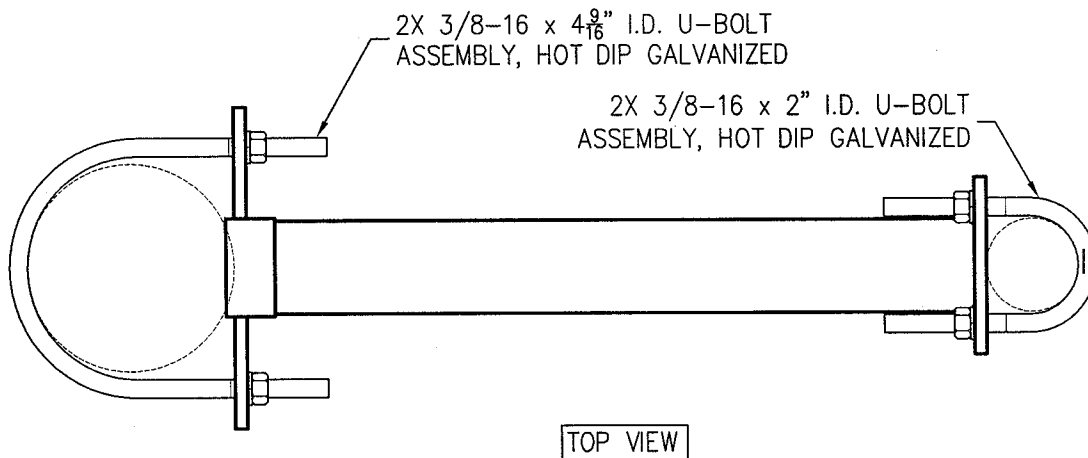
1. (1) REQUIRED
2. WEIGHT: 4.13 LB
3. WINDAREA: .4 FT²

<h2 style="margin: 0;">PROPAGATION SYSTEMS, INC.</h2> <p style="margin: 0;">Ebensburg, Pennsylvania USA 814-472-5540</p>			
REV.	MADE BY CHECKED BY	DATE	CHANGE
<p>This drawing is loaned subject to the express understanding and agreement that the drawing and information therein contained are, and shall remain the property of PSI, and will not be otherwise utilized or disposed of, directly or indirectly, and will not be used in whole or in part or assist in making or finish any information for the making of drawings, prints or other reproductions hereof, or for the design or making of any item, parts, object, apparatus or parts thereof, except upon the written permissions of PSI first obtained. The acceptance of this drawing will be construed as an acceptance of the forgoing agreement.</p>			
<div style="font-size: 2em; font-weight: bold;">A</div>		<div style="font-size: 1.5em; font-weight: bold;">PARASITIC, HORIZONTAL, MAST MOUNTED</div>	
MODEL: PSIFML-1A-DA		DRAWN BY: D.G. Kellar	
CHANNEL/FREQUENCY: 92.9 MHz		DATE: 8/28/12	
SCALE: 1:8		APPROVED BY:	
DRAWING NO.: J712FM-1099-003		REV.	



- NOTES:
1. (1) REQUIRED
 2. WEIGHT: 9.6 LB/EACH
 3. WINDAREA: .23 FT²/EACH
 4. HOT DIP GALVANIZED

PROPAGATION SYSTEMS, INC. Ebensburg, Pennsylvania USA 814-472-5540			
BRACKET #1, MAST MOUNTING			
REV.	MADE BY CHECKED BY	DATE	CHANGE
This drawing is loaned subject to the express understanding and agreement that the drawing and information therein contained are, and shall remain the property of PSI, and will not be otherwise utilized or disposed of, directly or indirectly, and will not be used in whole or in part or assist in making or finish any reproductions hereof, or for the design or making of any item, parts, object, apparatus or parts thereof, except upon the written permissions of PSI first obtained. The acceptance of this drawing will be construed as an acceptance of the forgoing agreement.			MODEL: PSIFML-1A-DA CHANNEL/FREQUENCY: 92.9 MHz SCALE: 1:4
SIZE A			DRAWN BY: D.G. Kellar APPROVED BY: DATE: 8/28/12
			DRAWING NO.: J712FM-1099-004 REV.



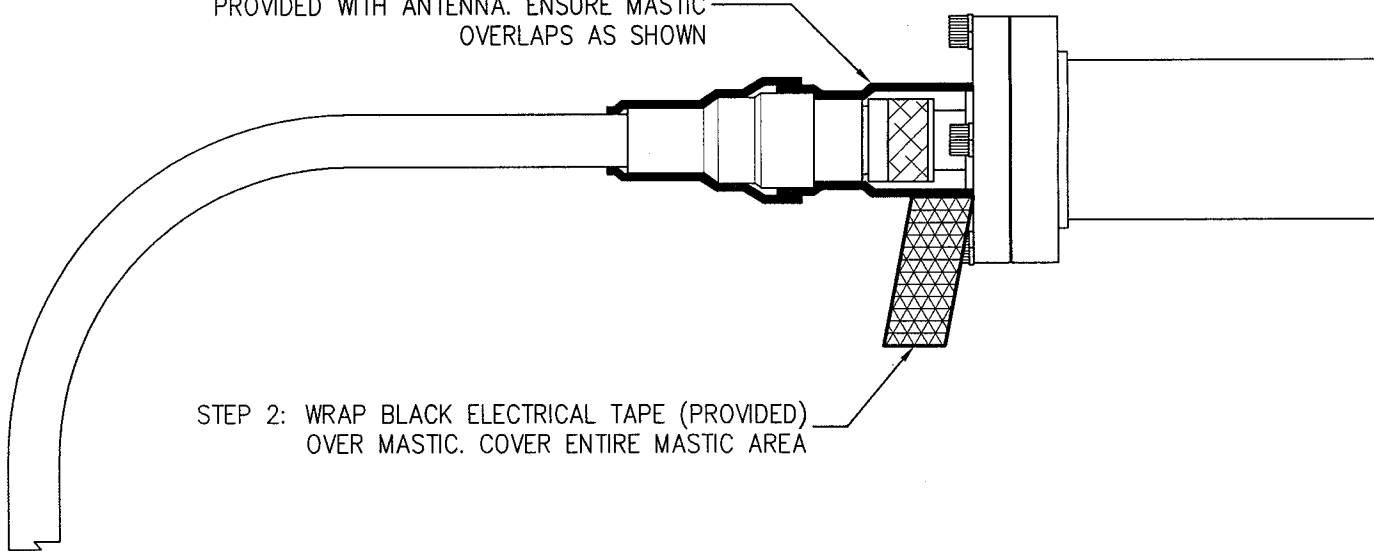
NOTES:

1. (1) REQUIRED
2. WEIGHT: 9.5 LB/EACH
3. WINDAREA: .23 FT²/EACH
4. HOT DIP GALVANIZED

<h1 style="margin: 0;">PROPAGATION SYSTEMS, INC.</h1> <p style="margin: 0;">Ebensburg, Pennsylvania USA 814-472-5540</p>			
REV.	MADE BY CHECKED BY	DATE	CHANGE
<p style="font-size: small;">This drawing is loaned subject to the express understanding and agreement that the drawing and information therein contained are, and shall remain the property of PSI, and will not be otherwise utilized or disposed of, directly or indirectly, and will not be used in whole or in part or assist in making or finish any information for the making of drawings, prints or other reproductions hereof, or for the design or making of any item, parts, object, apparatus or parts thereof, except upon the written permissions of PSI first obtained. The acceptance of this drawing will be construed as an acceptance of the foregoing agreement.</p>			<p style="text-align: center; font-size: large;">A</p>
BRACKET #2, MAST MOUNTING			
MODEL: PSIFML-1A-DA		DRAWN BY: D.G. Kellar	
CHANNEL/FREQUENCY: 92.9 MHz		DATE: 8/28/12	
SCALE: 1:4		DRAWING NO.: J712FM-1099-007	
			REV.

STEP 1: WRAP JOINT WITH MASTIC
PROVIDED WITH ANTENNA. ENSURE MASTIC
OVERLAPS AS SHOWN

STEP 2: WRAP BLACK ELECTRICAL TAPE (PROVIDED)
OVER MASTIC. COVER ENTIRE MASTIC AREA



REV.	MADE BY CHECKED BY	DATE	CHANGE

This drawing is loaned subject to the express understanding and agreement that the drawing and information therein contained are, and shall remain the property of PSI, and will not be otherwise utilized or disposed of, directly or indirectly, and will not be used in whole or in part or assist in making or finish any information for the making of drawings, prints or other reproductions hereof, or for the design or making of any item, parts, object, apparatus or parts thereof, except upon the written permissions of PSI first obtained. The acceptance of this drawing will be construed as an acceptance of the forgoing agreement.

SIZE

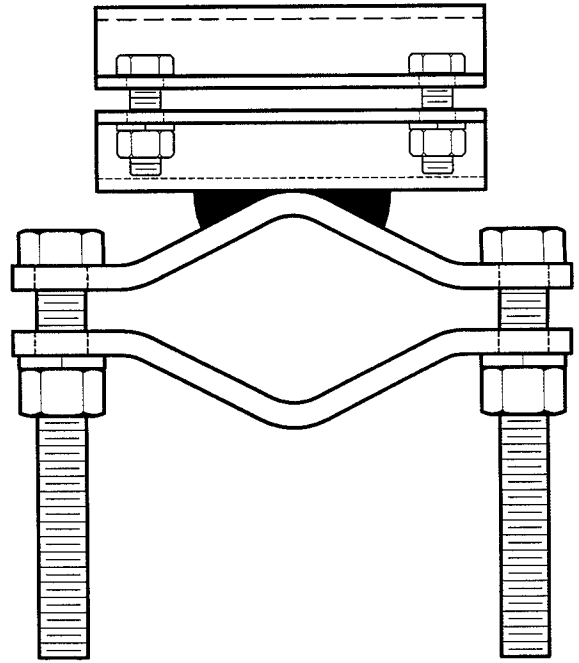
A

PROPAGATION SYSTEMS, INC.

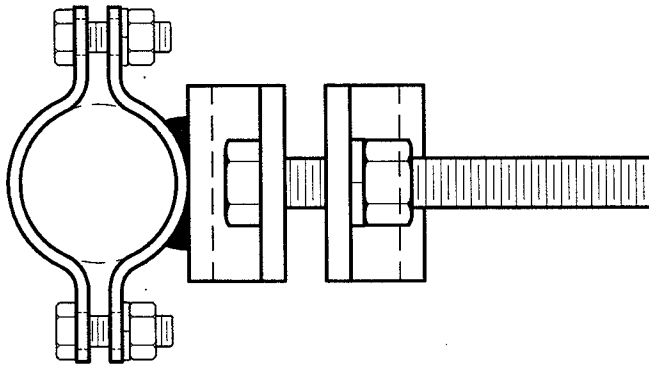
Ebensburg, Pennsylvania USA 814-472-5540

TYPE N SEALING INSTRUCTIONS

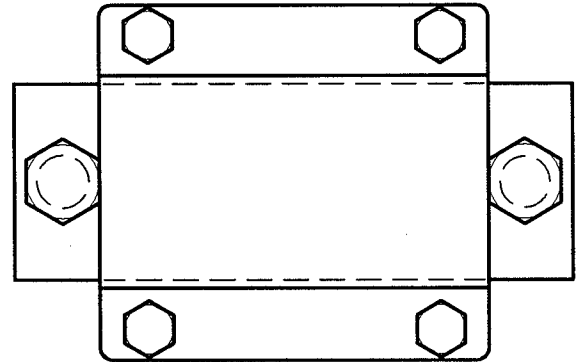
MODEL:	DRAWN BY: D.G. Kellar	DATE: 2/6/07
CHANNEL/ FREQUENCY:	APPROVED BY: D. ROSS	DATE: 1/22/11
SCALE: 1:2	DRAWING NO.: 31-00046	REV.



PLAN VIEW



SIDE VIEW



FRONT VIEW

NOTE:

1. FITS 1½" TO 4" DIAMETER ROUND MEMBERS
2. WEIGHT: 4.0 Lb
3. WINDAREA: .1 Sq. FT. (TIA-222-F)

REV.	MADE BY CHECKED BY	DATE	CHANGE

This drawing is loaned subject to the express understanding and agreement that the drawing and information therein contained are, and shall remain the property of PSI, and will not be otherwise utilized or disposed of, directly or indirectly, and will not be used in whole or in part or assist in making or finish any information for the making of drawings, prints or other reproductions hereof, or for the design or making of any item, parts, object, apparatus or parts thereof, except upon the written permissions of PSI first obtained. The acceptance of this drawing will be construed as an acceptance of the forgoing agreement.

SIZE
A

PROPAGATION SYSTEMS, INC.

Ebensburg, Pennsylvania USA 814-472-5540

SADDLE BRACKET

MODEL: PSIFM	DRAWN BY: D.G. Kellar	DATE: 11/01/05
CHANNEL/ FREQUENCY:	APPROVED BY:	DATE:
SCALE: 1:2	DRAWING NO.: 33-00155	REV.