

TECHNICAL EXHIBIT  
MINOR CHANGE APPLICATION  
TV STATION WWJX (FACILITY ID 166512)  
JACKSON, MISSISSIPPI  
CH 51 177 KW (MAX-DA) 384 M

Technical Narrative

This Technical Exhibit supports a minor change application for construction permit for an unbuilt television station WWJX at Jackson, Mississippi. Station WWJX is authorized on analog channel 51 with a non-directional antenna maximum effective radiated power (ERP) of 5000 kilowatts (kW) and an antenna height above average terrain (HAAT) of 384 meters (BNPCT-20060421ACB).

Proposed Facilities

Station WWJX desires to “flash-cut” to digital mode on the current channel 51. Digital operation is proposed with a Dielectric TFU-30GTH/VP-R 6T140 directional antenna, along with a maximum ERP of 177 kW and an antenna HAAT of 384 meters. The proposed site coordinates are (NAD27): 32-14-26 N, 90-24-15 W. The antenna structure registration number (ASRN) is 1042633.

Figure 2 is a map indicating that the proposed City-Grade contour will encompass all of the city limits of Jackson (derived from 2000 U.S. Census information for Mississippi).

---

Pre-Transition Allocation Considerations

The proposed WWJX-DT operation meets the FCC's interference standards to pertinent analog (NTSC) and DTV assignments using the procedures outlined in the FCC's OET-69 Bulletin and a 2 kilometer grid cell size as shown by the analysis provided in Figure 3. The proposed WWJX-DT operation complies with the FCC's "de minimis" interference policy with respect to pertinent Class A TV assignments.

The proposed operation complies with the current Freeze on contour extension, as it will not extend coverage beyond the currently authorized Grade B contour for WWJX (see Figure 2).

Post-Transition Allocation Considerations

The proposed WWJX-DT operation meets the FCC's interference standards to pertinent DTV Appendix B allotments using the procedures outlined in the FCC's OET-69 Bulletin and a 2 kilometer grid cell size as shown by the analysis provided in Figure 4. The proposed operation complies with the current Freeze on contour extension as it will not extend coverage beyond the WWJX "Appendix B" facility. (see Figure 2).

Population Served

The herein proposed WWJX-DT facility is predicted to serve 666,778 persons, post-transition based upon the 2000 Census. WWJX-DT's associated Appendix B facility is predicted to serve 681,000 persons. Therefore, the herein proposed facility would serve more than 97.9% of WWJX-DT's Appendix B population.

Radiofrequency Electromagnetic Field Exposure

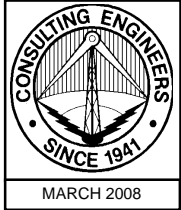
The proposed WWJX-DT facilities were evaluated in terms of potential radio frequency (RF) energy exposure at ground level to workers and the general public. The radiation center for the proposed antenna is located 366 meters above ground level with a maximum ERP of 177 kW. A conservative relative field value of 0.1 was assumed for the downward antenna radiation calculation (see Appendix). The calculated power density at a point 2 meters above ground level will not exceed  $0.0005 \text{ mW/cm}^2$ . This is less than 5% of the FCC's recommended limit of  $0.46 \text{ mW/cm}^2$  for channel 51 for an "uncontrolled" environment.

Access to the transmitting site will be restricted and appropriately marked with warning signs. As this will be a multi-user site an agreement between the stations will control access. In the event that workers or other authorized personnel enter restricted areas or climb the tower, appropriate measures will be taken to assure worker safety with respect to radio frequency radiation exposure. Such measures include reducing the average exposure by spreading out the work over a longer period of time, wearing "accepted" RFR protective clothing and/or RFR exposure monitors or scheduling work when the stations are at reduced power or shut down.

It is noted that this statement only addresses the potential for radiofrequency electromagnetic field exposure. All other aspects of the environmental processing analysis will be or already have been provided to the FCC by the tower owner.

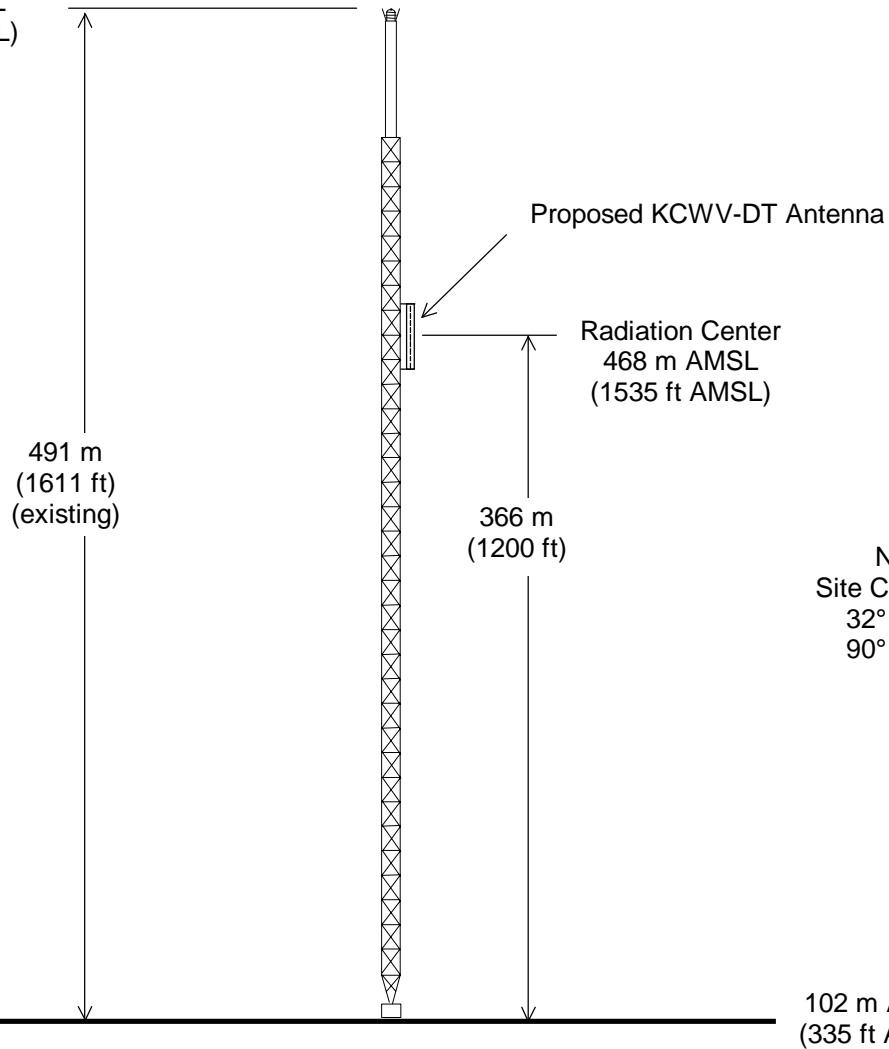
Charles A. Cooper  
du Treil, Lundin & Rackley, Inc.  
201 Fletcher Avenue  
Sarasota, Florida 34237  
(941) 329-6000  
CHARLES@DLR.COM

March 10, 2008



ASRN: 1042633

593 m AMSL  
(1946 ft AMSL)



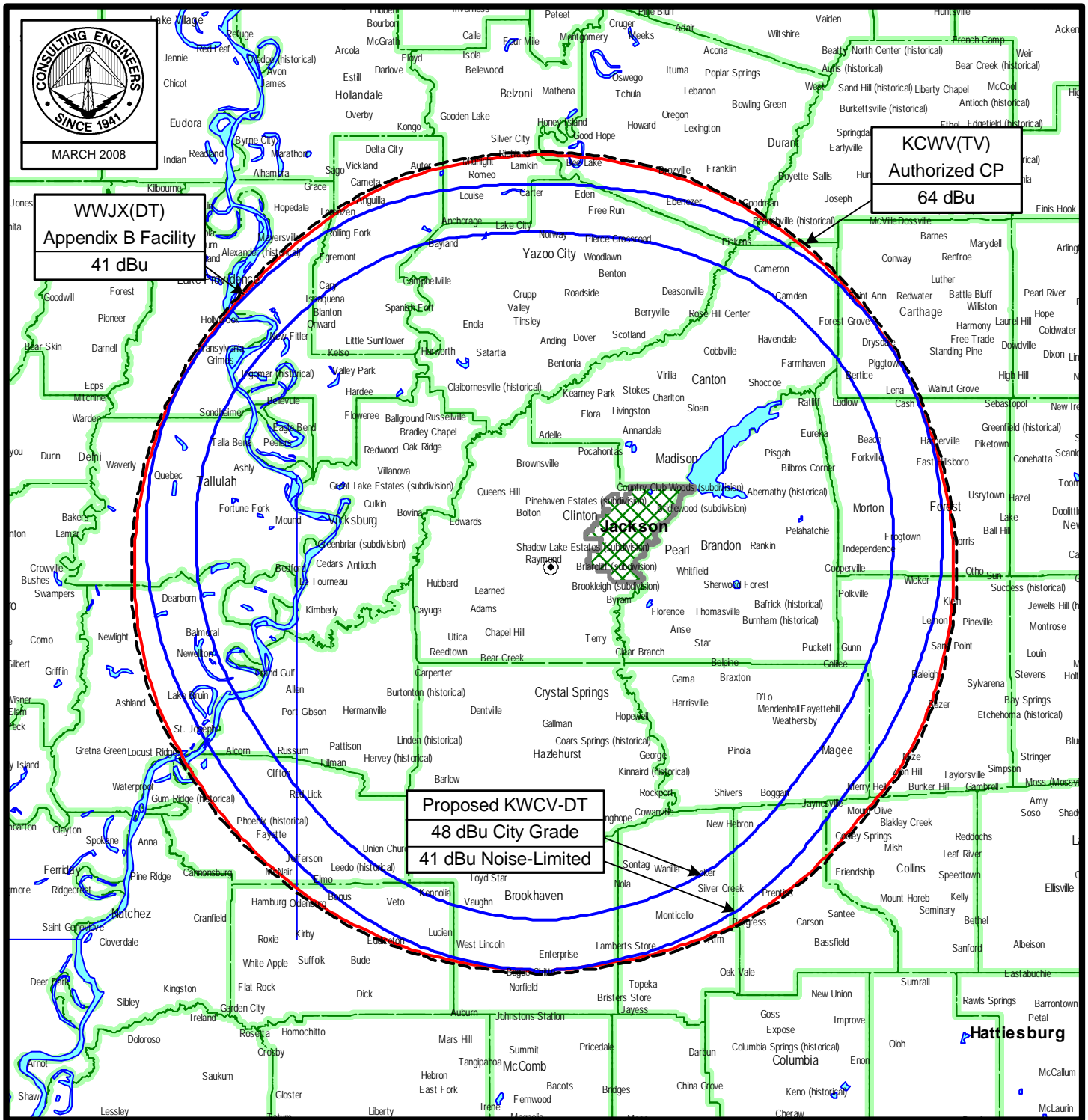
NAD27  
Site Coordinates:  
32° 14' 26" N  
90° 24' 15" W

## ANTENNA AND SUPPORTING STRUCTURE

TV STATION WWJX  
JACKSON, MISSISSIPPI  
CH 51 177 KW (MAX-DA) 384 M

du Treil, Lundin & Rackley, Inc. Sarasota, Florida

Figure 2



## PREDICTED COVERAGE CONTOURS

STATION WWJX(DT)

JACKSON, MISSISSIPPI

CH 51 177 KW (MAX-DA) 384 M

du Treil, Lundin & Rackley, Inc Sarasota, Florida

Figure 3  
Sheet 1 of 13

Census data selected 1990

TV INTERFERENCE and SPACING ANALYSIS PROGRAM

Date: 03-10-2008 Time: 11:21:34

Record Selected for Analysis

WWJX USERRECORD-01 JACKSON MS US  
Channel 51 ERP 177. kW HAAT 378. m RCAMSL 00468 m  
Latitude 032-14-26 Longitude 0090-24-15  
Status APP Zone 2 Border  
Dir Antenna Make usr Model WWJXDT Beam tilt N Ref Azimuth 0.  
Last update Cutoff date Docket  
Comments  
Applicant

Cell Size for Service Analysis 2.0 km/side

Distance Increments for Longley-Rice Analysis 1.00 km

Facility meets maximum height/power limits

Azimuth (Deg)	ERP (kW)	HAAT (m)	41.0 dBu F(50,90) (km)
0.0	72.726	388.7	84.5
45.0	157.898	372.7	88.8
90.0	121.348	365.8	86.3
135.0	87.599	353.9	82.9
180.0	177.000	367.4	89.2
225.0	87.599	385.9	85.6
270.0	121.348	404.4	89.0
315.0	157.898	383.1	89.5

Evaluation toward Class A Stations

No Spacing violations or contour overlap to Class A stations

Class A Evaluation Complete

Proposed facility OK to FCC Monitoring Stations

Proposed facility OK toward West Virginia quite zone

Proposed facility OK toward Table Mountain

Proposed facility is beyond the Canadian coordination distance

Proposed facility is beyond the Mexican coordination distance

Proposed station is OK toward AM broadcast stations

Figure 3  
Sheet 2 of 13

\*\*\*\*\*

Start of Interference Analysis

Channel	Call	City/State	ARN
51	WWJX	JACKSON MS	USERRECORD01

Stations Potentially Affected by Proposed Station

Chan	Call	City/State	Dist(km)	Status	Application Ref. No.
47	960724KS	HATTIESBURG MS	139.0	APP	BPET -19960724KS
48	WNTZ	NATCHEZ MS	137.0	LIC	BLCT -19951010KS
48	WNTZ	NATCHEZ MS	62.5	CP	BPCT -20011115AAF
51	NEW	CENTER POINT AL	342.0	ADD	BPRM -20000717AFD
51	WNCF	MONTGOMERY AL	389.4	LIC	BLCDT -20070905ADG
51	WHOA-DT	MONTGOMERY AL	344.3	PLN	DTVPLN -DTVPI468
51	WPXX-TV	MEMPHIS TN	334.7	LIC	BLCDT -20020430ACC
51	WFBI-DT	MEMPHIS TN	334.7	PLN	DTVPLN -DTVPI494
52	WJTV-DT	JACKSON MS	0.0	PLN	DTVPLN -DTVPI514

\*\*\*\*\*

Analysis of Interference to Affected Station 1

Analysis of current record

Channel	Call	City/State	Application Ref. No.
47	960724KS	HATTIESBURG MS	BPET -19960724KS

Stations Potentially Affecting This Station

Chan	Call	City/State	Dist(km)	Status	Application Ref. No.
39	WLOX-DT	BILOXI MS	74.6	PLN	DTVPLN -DTVPI095
40	WDBD	JACKSON MS	135.5	CP MOD	BMPCT -20020429ABF
44	WMAW-TV	MERIDIAN MS	91.4	CP	BPEDT -20000501AHT
44	WMAW-DT	MERIDIAN MS	91.4	PLN	DTVPLN -DTVPI273
45	960724KR	COLUMBIA MS	44.9	APP	BPET -19960724KR
46	960920LV	WIGGINS MS	74.7	APP	BPCT -19960920LV
46	NEW	WIGGINS MS	91.7	LIC	BPRM -20020308ABU
47	WPMI-TV	MOBILE AL	187.0	LIC	BLCDT -20020510ABE
47	WPMI-DT	MOBILE AL	182.8	PLN	DTVPLN -DTVPI349
47	WPCT-DT	PANAMA CITY BEACH FL	366.7	PLN	DTVPLN -DTVPI355
48	WXXV-DT	GULFPORT MS	73.4	PLN	DTVPLN -DTVPI395
48	WXXV-TV	GULFPORT MS	73.4	CP	BPCT -19991014ABJ
48	WNTZ	NATCHEZ MS	157.0	CP	BPCT -20011115AAF
49	WTOK-DT	MERIDIAN MS	126.1	PLN	DTVPLN -DTVPI422
51	WLBT-DT	JACKSON MS	135.4	PLN	DTVPLN -DTVPI483
51	WWJX	JACKSON MS	139.0	CP	BNPCT -20060421ACB
54	WUPL	SLIDELL LA	128.9	LIC	BLCT -19950530KE
61	960722KQ	MOBILE AL	184.7	APP	BPCT -19960722KQ
61	960725LB	MOBILE AL	138.8	APP	BPCT -19960725LB
51	WWJX	JACKSON MS	139.0	APP	USERRECORD-01

Proposed station is beyond the site to  
nearest cell evaluation distance

\*\*\*\*\*

Analysis of Interference to Affected Station 2

NTSC Baseline Analysis

**Figure 3**  
**Sheet 3 of 13**

Channel	Call	City/State	Application Ref. No.
48	WNTZ	NATCHEZ MS	DTVPLN -NPLN1733

Stations Potentially Affecting This Station

Chan	Call	City/State	Dist(km)	Status	Application Ref. No.
40	WDBD	JACKSON MS	137.0	PLN	DTVPLN -NPLN1587
41	WDBD-DT	JACKSON MS	137.0	PLN	DTVPLN -DTVP1166
48	WXXV-DT	GULFPORT MS	270.5	PLN	DTVPLN -DTVP1395
49	NEW	EL DORADO AR	201.8	PLN	DTVPLN -NPLN1746
49	WNTZ-DT	NATCHEZ MS	0.0	PLN	DTVPLN -DTVP1423
51	WLBT-DT	JACKSON MS	137.6	PLN	DTVPLN -DTVP1483
52	WJTV-DT	JACKSON MS	137.0	PLN	DTVPLN -DTVP1514
55	KNOE-DT	MONROE LA	68.6	PLN	DTVPLN -DTVP1567

Results for: 48N MS NATCHEZ	DTVPLN	NPLN1733	PLN
	POPULATION	AREA (sq km)	
within Noise Limited Contour	178413	15280.4	
not affected by terrain losses	178222	15268.4	
lost to NTSC IX	0	0.0	
lost to additional IX by ATV	0	0.0	
lost to all IX	0	0.0	

Analysis of current record

Channel	Call	City/State	Application Ref. No.
48	WNTZ	NATCHEZ MS	BLCT -19951010KS

Stations Potentially Affecting This Station

Chan	Call	City/State	Dist(km)	Status	Application Ref. No.
40	WDBD	JACKSON MS	137.5	CP MOD	BMPCT -20020429ABF
41	960920IX	ALEXANDRIA LA	87.2	APP	BPCT -19960920IX
41	KBCA	ALEXANDRIA LA	122.7	LIC	BLCT -20050728AMI
41	WDBD-DT	JACKSON MS	137.0	PLN	DTVPLN -DTVP1166
41	WDBD	JACKSON MS	137.5	CP	BPCDT -19980825KH
48	WXXV-DT	GULFPORT MS	270.5	PLN	DTVPLN -DTVP1395
48	WXXV-TV	GULFPORT MS	270.5	CP	BPCDT -19991014ABJ
49	KKYK-DT	CAMDEN AR	201.9	LIC	BLCT -20000412ADA
49	KKYK-DT	CAMDEN AR	201.8	CP	BPCDT -20050224ABE
49	WNTZ	NATCHEZ MS	0.0	LIC	BLCT -20060630AAV
49	WNTZ-DT	NATCHEZ MS	0.0	PLN	DTVPLN -DTVP1423
49	WNTZ	NATCHEZ MS	77.4	APP	BMPCT -20011116ABJ
51	WLBT-DT	JACKSON MS	137.6	PLN	DTVPLN -DTVP1483
51	WWJX	JACKSON MS	137.0	CP	BNPCT -20060421ACB
52	WJTV-DT	JACKSON MS	137.0	PLN	DTVPLN -DTVP1514
55	KNOE-DT	MONROE LA	68.6	PLN	DTVPLN -DTVP1567
51	WWJX	JACKSON MS	137.0	APP	USERRECORD-01

Proposed station is beyond the site to  
nearest cell evaluation distance

#####

Analysis of Interference to Affected Station 3

Analysis of current record

Channel	Call	City/State	Application Ref. No.
48	WNTZ	NATCHEZ MS	BPCT -20011115AAF

Stations Potentially Affecting This Station

Chan	Call	City/State	Dist(km)	Status	Application Ref. No.
40	WDBD	JACKSON MS	62.3	CP MOD	BMPCT -20020429ABF

**Figure 3**  
**Sheet 4 of 13**

41	960920IX	ALEXANDRIA LA	163.1	APP	BPCT	-19960920IX
41	KBCA	ALEXANDRIA LA	195.2	LIC	BLCT	-20050728AMI
41	WDBD-DT	JACKSON MS	62.5	PLN	DTVPLN	-DTVP1166
41	WDBD	JACKSON MS	62.3	CP	BPCDT	-19980825KH
45	960724KR	COLUMBIA MS	122.5	APP	BPET	-19960724KR
47	960724KS	HATTIESBURG MS	157.0	APP	BPET	-19960724KS
48	WXXV-DT	GULFPORT MS	216.0	PLN	DTVPLN	-DTVP1395
48	WXXV-TV	GULFPORT MS	216.0	CP	BPCDT	-19991014ABJ
49	WNTZ	NATCHEZ MS	77.4	LIC	BLCT	-20060630AAV
49	WNTZ-DT	NATCHEZ MS	77.4	PLN	DTVPLN	-DTVP1423
49	WNTZ	NATCHEZ MS	0.0	APP	BMPCT	-20011116ABJ
51	WLBT-DT	JACKSON MS	62.3	PLN	DTVPLN	-DTVP1483
51	WWJX	JACKSON MS	62.5	CP	BNPCT	-20060421ACB
52	WJTV-DT	JACKSON MS	62.5	PLN	DTVPLN	-DTVP1514
55	KNOE-DT	MONROE LA	114.9	PLN	DTVPLN	-DTVP1567
51	WWJX	JACKSON MS	62.5	APP	USERRECORD-01	

Proposal causes no interference

#####

Analysis of Interference to Affected Station 4

Analysis of current record

Channel	Call	City/State	Application Ref. No.
51	NEW	CENTER POINT AL	BPRM -20000717AFD

Stations Potentially Affecting This Station

Chan	Call	City/State	Dist(km)	Status	Application Ref. No.
44	WPXH	GADSDEN AL	96.5	LIC	BLCT -19980527KE
50	WBRC-DT	BIRMINGHAM AL	44.3	PLN	DTVPLN -DTVP1437
51	WSST-TV		319.0	APP	BDSTA -20060630AHJ
51	WNCF	MONTGOMERY AL	100.4	LIC	BLCT -20070905ADG
51	WHOA-DT	MONTGOMERY AL	107.1	PLN	DTVPLN -DTVP1468
51	WBIF	MARIANNA FL	316.6	LIC	BLCT -20010910ACH
51	WSST-TV	CORDELE GA	319.0	CP MOD	BMPCT -20000501ABJ
51	WSST-DT	CORDELE GA	318.6	PLN	DTVPLN -DTVP1475
51	WPXA	ROME GA	247.7	LIC	BLCT -20020510AAN
51	WTLK-DT	ROME GA	247.7	PLN	DTVPLN -DTVP1476
51	WLBT-DT	JACKSON MS	340.9	PLN	DTVPLN -DTVP1483
51	WWJX	JACKSON MS	342.0	CP	BNPCT -20060421ACB
51	WPGD-DT	HENDERSONVILLE TN	376.4	PLN	DTVPLN -DTVP1493
51	WPGD-TV	HENDERSONVILLE TN	352.5	LIC	BLCT -20050124ADA
51	WPXX-TV	MEMPHIS TN	356.9	LIC	BLCT -20020430ACC
51	WFBI-DT	MEMPHIS TN	356.9	PLN	DTVPLN -DTVP1494
52	WVTM-DT	BIRMINGHAM AL	44.6	PLN	DTVPLN -DTVP1498
53	WBIQ-DT	BIRMINGHAM AL	44.3	PLN	DTVPLN -DTVP1523
55	WAKA-DT	SELMA AL	105.9	PLN	DTVPLN -DTVP1559
58	WJSU-DT	ANNISTON AL	72.8	PLN	DTVPLN -DTVP1620
66	WLGA	OPELIKA AL	214.8	LIC	BLCT -20051104ADM
66	WSWSTV	PHENIX CITY AL	215.6	ADD	BPRM -20000717AFR
51	WWJX	JACKSON MS	342.0	APP	USERRECORD-01

Proposed station is beyond the site to  
nearest cell evaluation distance

#####

Analysis of Interference to Affected Station 5

DTV Baseline Analysis

**Figure 3**  
**Sheet 5 of 13**

Channel	Call	City/State	Application Ref. No.
51	WHOA-DT	MONTGOMERY AL	DTVPLN -DTVP1468

Stations Potentially Affecting This Station

Chan	Call	City/State	Dist(km)	Status	Application Ref. No.
50	WBRC-DT	BIRMINGHAM AL	149.8	PLN	DTVPLN -DTVP1437
51	NEW	MARIANNA FL	216.9	PLN	DTVPLN -NPLN1793
51	WSST-DT	CORDELE GA	278.5	PLN	DTVPLN -DTVP1475
51	WTLK-DT	ROME GA	310.2	PLN	DTVPLN -DTVP1476
51	WLBT-DT	JACKSON MS	342.2	PLN	DTVPLN -DTVP1483
52	WVTM-DT	BIRMINGHAM AL	150.0	PLN	DTVPLN -DTVP1498

Results for: 51A AL MONTGOMERY DTVPLN DTVP1468 PLN

HAAT 545.0 m, ATV ERP 285.0 kW

	POPULATION	AREA (sq km)
within Noise Limited Contour	540218	28781.4
not affected by terrain losses	539588	28609.8
lost to NTSC IX	162	51.9
lost to additional IX by ATV	1150	131.7
lost to ATV IX only	1167	135.7
lost to all IX	1312	183.5

NTSC Baseline Analysis

Channel	Call	City/State	Application Ref. No.
32	WHOATV	MONTGOMERY AL	DTVPLN -NPLN1420

Stations Potentially Affecting This Station

Chan	Call	City/State	Dist(km)	Status	Application Ref. No.
24	NEW -DT	TUSKEGEE AL	75.4	PLN	DTVPLN -DTVP0554
29	NEW	SELMA AL	41.0	PLN	DTVPLN -NPLN1348
31	WSWS-DT	OPELIKA AL	152.1	PLN	DTVPLN -DTVP0811
31	WSRE-DT	PENSACOLA FL	194.4	PLN	DTVPLN -DTVP0818
31	WGBC-DT	MERIDIAN MS	183.7	PLN	DTVPLN -DTVP0830
32	WAAY-DT	HUNTSVILLE AL	289.2	PLN	DTVPLN -DTVP0849
32	WFSU-DT	TALLAHASSEE FL	283.6	PLN	DTVPLN -DTVP0860
32	WPGA-DT	PERRY GA	306.4	PLN	DTVPLN -DTVP0861
32	WLAETV	NEW ORLEANS LA	388.3	PLN	DTVPLN -NPLN1431
32	NEW	YAZOO CITY MS	350.4	PLN	DTVPLN -NPLN1433
33	WDFX-DT	OZARK AL	149.0	PLN	DTVPLN -DTVP0891
33	WCFTTV	TUSCALOOSA AL	161.9	PLN	DTVPLN -NPLN1441
33	WHBR	PENSACOLA FL	188.9	PLN	DTVPLN -NPLN1446
39	NEW	DOTHAN AL	164.6	PLN	DTVPLN -NPLN1555
39	NEW	TUSCALOOSA AL	161.0	PLN	DTVPLN -NPLN1556
46	WMCF-DT	MONTGOMERY AL	59.2	PLN	DTVPLN -DTVP1316

Results for: 32N AL MONTGOMERY DTVPLN NPLN1420 PLN

	POPULATION	AREA (sq km)
within Noise Limited Contour	540218	28773.4
not affected by terrain losses	537076	28346.4
lost to NTSC IX	2157	335.2
lost to additional IX by ATV	11089	921.7
lost to all IX	13246	1256.9

Analysis of current record

Channel	Call	City/State	Application Ref. No.
51	WNCF	MONTGOMERY AL	BLCDT -20070905ADG

Stations Potentially Affecting This Station

Chan	Call	City/State	Dist(km)	Status	Application Ref. No.
50	WBRC-DT	BIRMINGHAM AL	134.3	PLN	DTVPLN -DTVP1437
51	WSST-TV		237.2	APP	BDSTA -20060630AHJ
51	NEW	CENTER POINT AL	100.4	ADD	BPRM -20000717AFD

**Figure 3**  
**Sheet 6 of 13**

51	WBIF	MARIANNA FL	219.0	LIC	BLCT	-20010910ACH
51	WSST-TV	CORDELE GA	237.2	CP MOD	BMPCDT	-20000501ABJ
51	WSST-DT	CORDELE GA	237.0	PLN	DTVPLN	-DTVP1475
51	WPXA	ROME GA	263.0	LIC	BLCDT	-20020510AAN
51	WTLK-DT	ROME GA	263.0	PLN	DTVPLN	-DTVP1476
51	WLBT-DT	JACKSON MS	387.5	PLN	DTVPLN	-DTVP1483
52	WVTM-DT	BIRMINGHAM AL	134.4	PLN	DTVPLN	-DTVP1498
51	WWJX	JACKSON MS	389.4	APP	USERRECORD-01	

Proposed station is beyond the site to nearest cell evaluation distance

#####

Analysis of Interference to Affected Station 6

Analysis of current record

Channel	Call	City/State	Application Ref. No.
51	WHOA-DT	MONTGOMERY AL	DTVPLN -DTVP1468

Stations Potentially Affecting This Station

Chan	Call	City/State	Dist(km)	Status	Application Ref. No.
50	WBRC-DT	BIRMINGHAM AL	149.8	PLN	DTVPLN -DTVP1437
50	WFGX	FORT WALTON BEACH FL	190.2	APP	BMPCDT -20051108AFS
50	WFGX-TV	FORT WALTON BEACH FL	194.6	LIC	BPRM -20000803AAE
50	WFGX	FORT WALTON BEACH FL	195.4	CP MOD	BMPCDT -20040204AAK
51	WSST-TV		278.5	APP	BDSTA -20060630AHJ
51	NEW	CENTER POINT AL	107.1	ADD	BPRM -20000717AFD
51	WBIF	MARIANNA FL	217.0	LIC	BLCT -20010910ACH
51	WSST-TV	CORDELE GA	278.5	CP MOD	BMPCDT -20000501ABJ
51	WSST-DT	CORDELE GA	278.5	PLN	DTVPLN -DTVP1475
51	WPXA	ROME GA	310.3	LIC	BLCDT -20020510AAN
51	WTLK-DT	ROME GA	310.2	PLN	DTVPLN -DTVP1476
51	WLBT-DT	JACKSON MS	342.2	PLN	DTVPLN -DTVP1483
52	WVTM-DT	BIRMINGHAM AL	150.0	PLN	DTVPLN -DTVP1498
51	WWJX	JACKSON MS	344.3	APP	USERRECORD-01

Proposal causes no interference

#####

Analysis of Interference to Affected Station 7

DTV Baseline Analysis

Channel	Call	City/State	Application Ref. No.
51	WFBI-DT	MEMPHIS TN	DTVPLN -DTVP1494

Stations Potentially Affecting This Station

Chan	Call	City/State	Dist(km)	Status	Application Ref. No.
50	WFBI	MEMPHIS TN	0.0	PLN	DTVPLN -NPLN1784
51	KFAA	ROGERS AR	402.3	PLN	DTVPLN -NPLN1788
51	WLBT-DT	JACKSON MS	337.4	PLN	DTVPLN -DTVP1483
51	WPGD-DT	HENDERSONVILLE TN	331.2	PLN	DTVPLN -DTVP1493
52	WMC-DT	MEMPHIS TN	8.0	PLN	DTVPLN -DTVP1520

Results for: 51A TN MEMPHIS DTVPLN DTVP1494 PLN

HAAT 315.0 m, ATV ERP 50.0 kW

	POPULATION	AREA (sq km)
within Noise Limited Contour	1129612	15669.2
not affected by terrain losses	1129451	15661.2



**Figure 3**  
**Sheet 7 of 13**

lost to NTSC IX	0	0.0
lost to additional IX by ATV	10860	835.8
lost to ATV IX only	10860	835.8
lost to all IX	10860	835.8

**NTSC Baseline Analysis**

Channel	Call	City/State	Application Ref. No.
50	WFBI	MEMPHIS TN	DTVPLN -NPLN1784

**Stations Potentially Affecting This Station**

Chan	Call	City/State	Dist(km)	Status	Application Ref. No.
43	WBBJ-DT	JACKSON TN	112.2	PLN	DTVPLN -DTVP1243
47	WLJT-DT	LEXINGTON TN	122.6	PLN	DTVPLN -DTVP1374
48	KVTJ	JONESBORO AR	123.9	PLN	DTVPLN -NPLN1729
49	KVTJ-DT	JONESBORO AR	123.9	PLN	DTVPLN -DTVP1409
50	WBRC-DT	BIRMINGHAM AL	336.5	PLN	DTVPLN -DTVP1437
50	KFAA-DT	ROGERS AR	402.3	PLN	DTVPLN -DTVP1438
50	WDKA-DT	PADUCAH KY	255.1	PLN	DTVPLN -DTVP1447
50	WPGD	HENDERSONVILLE TN	331.2	PLN	DTVPLN -NPLN1783
51	WFBI-DT	MEMPHIS TN	0.0	PLN	DTVPLN -DTVP1494
52	WMC-DT	MEMPHIS TN	8.0	PLN	DTVPLN -DTVP1520
53	WHBQ-DT	MEMPHIS TN	4.9	PLN	DTVPLN -DTVP1538

Results for: 50N TN MEMPHIS	DTVPLN	NPLN1784	PLN
	POPULATION	AREA (sq km)	
within Noise Limited Contour	1129612	15669.2	
not affected by terrain losses	1128881	15601.2	
lost to NTSC IX	0	20.0	
lost to additional IX by ATV	660	68.0	
lost to all IX	660	88.0	

**Analysis of current record**

Channel	Call	City/State	Application Ref. No.
51	WPXX-TV	MEMPHIS TN	BLCDDT -20020430ACC

**Stations Potentially Affecting This Station**

Chan	Call	City/State	Dist(km)	Status	Application Ref. No.
50	WPXX-TV	MEMPHIS TN	0.0	LIC	BLCDDT -19950315KH
51	NEW	CENTER POINT AL	356.9	ADD	BPRM -20000717AFD
51	KNWA-TV	ROGERS AR	396.3	CP	BPCT -20040121ADD
51	WLBT-DT	JACKSON MS	337.4	PLN	DTVPLN -DTVP1483
51	WPGD-DT	HENDERSONVILLE TN	331.2	PLN	DTVPLN -DTVP1493
51	WPGD-TV	HENDERSONVILLE TN	296.6	LIC	BLCDDT -20050124ADA
52	WMC-TV	MEMPHIS TN	7.9	LIC	BLCDDT -20020501AAP
52	WMC-DT	MEMPHIS TN	8.0	PLN	DTVPLN -DTVP1520
51	WWJX	JACKSON MS	334.7	APP	USERRECORD-01

Total scenarios = 4

Result key: 1  
Scenario 1 Affected station 7  
Before Analysis

Results for: 51A TN MEMPHIS	BLCDDT	20020430ACC	LIC
HAAT 298.0 m, ATV ERP 1000.0 kW			
	POPULATION	AREA (sq km)	
within Noise Limited Contour	1314363	27622.5	
not affected by terrain losses	1306652	27410.6	
lost to NTSC IX	0	0.0	
lost to additional IX by ATV	1626	152.0	
lost to ATV IX only	1626	152.0	
lost to all IX	1626	152.0	

**Figure 3**  
**Sheet 8 of 13**

Potential Interfering Stations Included in above Scenario 1

51A MS JACKSON	DTVPLN	DTVP1483	PLN
51A TN HENDERSONVILLE	DTVPLN	DTVP1493	PLN
52A TN MEMPHIS	BLCDDT	20020501AAP	LIC

**After Analysis**

Results for: 51A TN MEMPHIS	BLCDDT	20020430ACC	LIC
HAAT 298.0 m, ATV ERP 1000.0 kW			
	POPULATION	AREA (sq km)	
within Noise Limited Contour	1314363	27622.5	
not affected by terrain losses	1306652	27410.6	
lost to NTSC IX	0	0.0	
lost to additional IX by ATV	1626	152.0	
lost to ATV IX only	1626	152.0	
lost to all IX	1626	152.0	

Potential Interfering Stations Included in above Scenario 1

51A MS JACKSON	DTVPLN	DTVP1483	PLN
51A TN HENDERSONVILLE	DTVPLN	DTVP1493	PLN
52A TN MEMPHIS	BLCDDT	20020501AAP	LIC
51A MS JACKSON	USERRECORD01		APP

Percent new IX = 0.0000%

Result key: 2  
Scenario 2 Affected station 7  
Before Analysis

Results for: 51A TN MEMPHIS	BLCDDT	20020430ACC	LIC
HAAT 298.0 m, ATV ERP 1000.0 kW			
	POPULATION	AREA (sq km)	
within Noise Limited Contour	1314363	27622.5	
not affected by terrain losses	1306652	27410.6	
lost to NTSC IX	0	0.0	
lost to additional IX by ATV	1769	160.0	
lost to ATV IX only	1769	160.0	
lost to all IX	1769	160.0	

Potential Interfering Stations Included in above Scenario 2

51A MS JACKSON	DTVPLN	DTVP1483	PLN
51A TN HENDERSONVILLE	DTVPLN	DTVP1493	PLN
52A TN MEMPHIS	DTVPLN	DTVP1520	PLN

**After Analysis**

Results for: 51A TN MEMPHIS	BLCDDT	20020430ACC	LIC
HAAT 298.0 m, ATV ERP 1000.0 kW			
	POPULATION	AREA (sq km)	
within Noise Limited Contour	1314363	27622.5	
not affected by terrain losses	1306652	27410.6	
lost to NTSC IX	0	0.0	
lost to additional IX by ATV	1769	160.0	
lost to ATV IX only	1769	160.0	
lost to all IX	1769	160.0	

Potential Interfering Stations Included in above Scenario 2

51A MS JACKSON	DTVPLN	DTVP1483	PLN
51A TN HENDERSONVILLE	DTVPLN	DTVP1493	PLN
52A TN MEMPHIS	DTVPLN	DTVP1520	PLN

Figure 3  
Sheet 9 of 13

51A MS JACKSON                      USERRECORD01                      APP

Percent new IX =        0.0000%

Result key:                      3  
Scenario                      3    Affected station                      7  
Before Analysis

Results for: 51A TN MEMPHIS                      BLCDT                      20020430ACC    LIC  
HAAT    298.0 m, ATV ERP 1000.0 kW

	POPULATION	AREA (sq km)
within Noise Limited Contour	1314363	27622.5
not affected by terrain losses	1306652	27410.6
lost to NTSC IX	0	0.0
lost to additional IX by ATV	1879	184.0
lost to ATV IX only	1879	184.0
lost to all IX	1879	184.0

Potential Interfering Stations Included in above Scenario                      3

51A MS JACKSON	DTVPLN	DTVP1483	PLN
51A TN HENDERSONVILLE	BLCDT	20050124ADA	LIC
52A TN MEMPHIS	BLCDT	20020501AAP	LIC

After Analysis

Results for: 51A TN MEMPHIS                      BLCDT                      20020430ACC    LIC  
HAAT    298.0 m, ATV ERP 1000.0 kW

	POPULATION	AREA (sq km)
within Noise Limited Contour	1314363	27622.5
not affected by terrain losses	1306652	27410.6
lost to NTSC IX	0	0.0
lost to additional IX by ATV	1879	184.0
lost to ATV IX only	1879	184.0
lost to all IX	1879	184.0

Potential Interfering Stations Included in above Scenario                      3

51A MS JACKSON	DTVPLN	DTVP1483	PLN
51A TN HENDERSONVILLE	BLCDT	20050124ADA	LIC
52A TN MEMPHIS	BLCDT	20020501AAP	LIC

Percent new IX =        0.0000%

Result key:                      4  
Scenario                      4    Affected station                      7  
Before Analysis

Results for: 51A TN MEMPHIS                      BLCDT                      20020430ACC    LIC  
HAAT    298.0 m, ATV ERP 1000.0 kW

	POPULATION	AREA (sq km)
within Noise Limited Contour	1314363	27622.5
not affected by terrain losses	1306652	27410.6
lost to NTSC IX	0	0.0
lost to additional IX by ATV	2022	192.0
lost to ATV IX only	2022	192.0
lost to all IX	2022	192.0

Potential Interfering Stations Included in above Scenario                      4

51A MS JACKSON	DTVPLN	DTVP1483	PLN
51A TN HENDERSONVILLE	BLCDT	20050124ADA	LIC
52A TN MEMPHIS	DTVPLN	DTVP1520	PLN

Figure 3  
Sheet 10 of 13

After Analysis

Results for: 51A TN MEMPHIS                      BLCDT                      20020430ACC    LIC  
HAAT    298.0 m, ATV ERP 1000.0 kW

	POPULATION	AREA (sq km)
within Noise Limited Contour	1314363	27622.5
not affected by terrain losses	1306652	27410.6
lost to NTSC IX	0	0.0
lost to additional IX by ATV	2022	192.0
lost to ATV IX only	2022	192.0
lost to all IX	2022	192.0

Potential Interfering Stations Included in above Scenario                      4

51A MS JACKSON	DTVPLN	DTVP1483	PLN
51A TN HENDERSONVILLE	BLCDT	20050124ADA	LIC
52A TN MEMPHIS	DTVPLN	DTVP1520	PLN
51A MS JACKSON	USERRECORD01		APP

Percent new IX =        0.0000%

Worst case new IX        0.0000% Scenario                      1

#####

Analysis of Interference to Affected Station                      8

Analysis of current record

Channel	Call	City/State	Application Ref. No.
51	WFBI-DT	MEMPHIS TN	DTVPLN -DTVP1494

Stations Potentially Affecting This Station

Chan	Call	City/State	Dist(km)	Status	Application Ref. No.
50	WPXX-TV	MEMPHIS TN	0.0	LIC	BLCT -19950315KH
51	NEW	CENTER POINT AL	356.9	ADD	BPRM -20000717AFD
51	KNWA-TV	ROGERS AR	396.3	CP	BPCT -20040121ADD
51	WLBT-DT	JACKSON MS	337.4	PLN	DTVPLN -DTVP1483
51	WPGD-DT	HENDERSONVILLE TN	331.2	PLN	DTVPLN -DTVP1493
51	WPGD-TV	HENDERSONVILLE TN	296.6	LIC	BLCDT -20050124ADA
52	WMC-TV	MEMPHIS TN	7.9	LIC	BLCDT -20020501AAP
52	WMC-DT	MEMPHIS TN	8.0	PLN	DTVPLN -DTVP1520
51	WWJX	JACKSON MS	334.7	APP	USERRECORD-01

Proposal causes no interference

#####

Analysis of Interference to Affected Station                      9

DTV Baseline Analysis

Channel	Call	City/State	Application Ref. No.
52	WJTV-DT	JACKSON MS	DTVPLN -DTVP1514

Stations Potentially Affecting This Station

Chan	Call	City/State	Dist(km)	Status	Application Ref. No.
51	WLBT-DT	JACKSON MS	3.7	PLN	DTVPLN -DTVP1483
52	WVIM-DT	BIRMINGHAM AL	364.3	PLN	DTVPLN -DTVP1498
52	WMC-DT	MEMPHIS TN	329.0	PLN	DTVPLN -DTVP1520

Results for: 52A MS JACKSON                      DTVPLN                      DTVP1514                      PLN

Figure 3  
Sheet 11 of 13

HAAT 497.0 m, ATV ERP 1000.0 kW					
		POPULATION		AREA (sq km)	
within Noise Limited Contour		789099		39435.4	
not affected by terrain losses		786035		39213.5	
lost to NTSC IX		0		0.0	
lost to additional IX by ATV		1840		274.4	
lost to ATV IX only		1840		274.4	
lost to all IX		1840		274.4	
NTSC Baseline Analysis					
Channel	Call	City/State		Application Ref. No.	
12	WJTV	JACKSON MS		DTVPLN	-NPLN0776
Stations Potentially Affecting This Station					
Chan	Call	City/State	Dist(km)	Status	Application Ref. No.
11	KAQY	COLUMBIA LA	169.0	PLN	DTVPLN -NPLN0716
11	WTOKTV	MERIDIAN MS	161.3	PLN	DTVPLN -NPLN0722
12	WSFA	MONTGOMERY AL	400.4	PLN	DTVPLN -NPLN0752
12	KTHV-DT	LITTLE ROCK AR	344.3	PLN	DTVPLN -DTVP0094
12	WVESTV	NEW ORLEANS LA	257.8	PLN	DTVPLN -NPLN0767
12	KSLATV	SHREVEPORT LA	334.4	PLN	DTVPLN -NPLN0768
12	WMAETV	BOONEVILLE MS	310.2	PLN	DTVPLN -NPLN0775
12	KBMT	BEAUMONT TX	401.7	PLN	DTVPLN -NPLN0796
13	KLTMTV	MONROE LA	156.7	PLN	DTVPLN -NPLN0834
13	WLOXTV	BILOXI MS	209.5	PLN	DTVPLN -NPLN0842
Results for: 12N MS JACKSON					
		POPULATION		DTVPLN	NPLN0776 PLN
within Noise Limited Contour		789099		AREA (sq km)	
not affected by terrain losses		770488		39435.4	
lost to NTSC IX		49343		37885.9	
lost to additional IX by ATV		104		4616.2	
lost to all IX		49447		20.2	
				4636.4	
Analysis of current record					
Channel	Call	City/State		Application Ref. No.	
52	WJTV-DT	JACKSON MS		DTVPLN	-DTVP1514
Stations Potentially Affecting This Station					
Chan	Call	City/State	Dist(km)	Status	Application Ref. No.
51	WLBT-DT	JACKSON MS	3.7	PLN	DTVPLN -DTVP1483
52	WVTM-DT	BIRMINGHAM AL	364.3	PLN	DTVPLN -DTVP1498
52	WMC-TV	MEMPHIS TN	342.3	LIC	BLCDT -20020501A
52	WMC-DT	MEMPHIS TN	329.0	PLN	DTVPLN -DTVP1520
51	WWJX	JACKSON MS	0.0	APP	USERRECORD-01
Proposal causes no interference					
#####					
Analysis of Interference to Affected Station 10					
DTV Baseline Analysis					
Channel	Call	City/State		Application Ref. No.	
51	WLBT-DT	JACKSON MS		DTVPLN	-DTVP1483
Stations Potentially Affecting This Station					
Chan	Call	City/State	Dist(km)	Status	Application Ref. No.
51	WHOA-DT	MONTGOMERY AL	342.2	PLN	DTVPLN -DTVP1468
51	WFBI-DT	MEMPHIS TN	337.4	PLN	DTVPLN -DTVP1494
52	WJTV-DT	JACKSON MS	3.7	PLN	DTVPLN -DTVP1514

Figure 3  
Sheet 12 of 13

Results for: 51A MS JACKSON			DTVPLN	DTVP1483	PLN
HAAT	610.0 m, ATV ERP 1000.0 kW				
		POPULATION	AREA (sq km)		
within Noise Limited Contour		932820	47559.1		
not affected by terrain losses		918725	46856.8		
lost to NTSC IX		0	0.0		
lost to additional IX by ATV		2167	157.4		
lost to ATV IX only		2167	157.4		
lost to all IX		2167	157.4		
NTSC Baseline Analysis					
Channel	Call	City/State	Application	Ref. No.	
03	WLBTTV	JACKSON MS	DTVPLN	-NPLN0237	
Stations Potentially Affecting This Station					
Chan	Call	City/State	Dist(km)	Status	Application Ref. No.
02	WBRZ	BATON ROUGE LA	226.5	PLN	DTVPLN -NPLN0168
02	WMABTV	MISSISSIPPI STATE MS	171.2	PLN	DTVPLN -NPLN0176
03	WEARTV	PENSACOLA FL	315.3	PLN	DTVPLN -NPLN0217
03	KATC	LAFAYETTE LA	306.9	PLN	DTVPLN -NPLN0230
03	KTBSTV	SHREVEPORT LA	337.2	PLN	DTVPLN -NPLN0231
03	WREGTV	MEMPHIS TN	333.8	PLN	DTVPLN -NPLN0259
04	WCBITV	COLUMBUS MS	221.2	PLN	DTVPLN -NPLN0298
Results for: 3N MS JACKSON			DTVPLN	NPLN0237	PLN
		POPULATION	AREA (sq km)		
within Noise Limited Contour		932820	47559.1		
not affected by terrain losses		909831	46404.7		
lost to NTSC IX		176074	11898.9		
lost to additional IX by ATV		0	0.0		
lost to all IX		176074	11898.9		
Analysis of current record					
Channel	Call	City/State	Application Ref. No.		
51	WWJX	JACKSON MS	USERRECORD-01		
Stations Potentially Affecting This Station					
Chan	Call	City/State	Dist(km)	Status	Application Ref. No.
51	NEW	CENTER POINT AL	342.0	ADD	BPRM -20000717AFD
51	WNCF	MONTGOMERY AL	389.4	LIC	BLCDT -20070905ADG
51	WHOA-DT	MONTGOMERY AL	344.3	PLN	DTVPLN -DTVP1468
51	WPXX-TV	MEMPHIS TN	334.7	LIC	BLCDT -20020430ACC
51	WFBI-DT	MEMPHIS TN	334.7	PLN	DTVPLN -DTVP1494
51	KFXK	LONGVIEW TX	427.3	LIC	BLCT -19910904KE
52	WJTV-DT	JACKSON MS	0.0	PLN	DTVPLN -DTVP1514
Total scenarios = 1					

Potential Interfering Stations Included in above Scenario 1

51A TN MEMPHIS	BLCDT	20020430ACC	LIC
52A MS JACKSON	DTVPLN	DTVP1514	PLN

#####  
FINISHED FINISHED FINISHED FINISHED FINISHED FINISHED

Figure 4  
Sheet 1 of 2

Census data selected 2000

Post Transition Data Base Selected  
/export/home/cdbs/tvdb.sff\_G  
TV INTERFERENCE and SPACING ANALYSIS PROGRAM

Date: 03-10-2008 Time: 11:29:08

Record Selected for Analysis

WWJX USERRECORD-01 JACKSON MS US  
Channel 51 ERP 177. kW HAAT 378. m RCMSL 00468 m  
Latitude 032-14-26 Longitude 0090-24-15  
Status APP Zone 2 Border  
Dir Antenna Make usr Model WWJXDT Beam tilt N Ref Azimuth 0.  
Last update Cutoff date Docket  
Comments  
Applicant

Cell Size for Service Analysis 2.0 km/side

Distance Increments for Longley-Rice Analysis 1.00 km

Facility meets maximum height/power limits

Azimuth (Deg)	ERP (kW)	HAAT (m)	41.0 dBu F(50,90) (km)
0.0	72.726	388.7	84.5
45.0	157.898	372.7	88.8
90.0	121.348	365.8	86.3
135.0	87.599	353.9	82.9
180.0	177.000	367.4	89.2
225.0	87.599	385.9	85.6
270.0	121.348	404.4	89.0
315.0	157.898	383.1	89.5

Evaluation toward Class A Stations

No Spacing violations or contour overlap to Class A stations

Class A Evaluation Complete

Proposed facility OK to FCC Monitoring Stations

Proposed facility OK toward West Virginia quite zone

Proposed facility OK toward Table Mountain

Proposed facility is beyond the Canadian coordination distance

Proposed facility is beyond the Mexican coordination distance

Proposed station is OK toward AM broadcast stations

\*\*\*\*\*  
Start of Interference Analysis

Figure 4  
Sheet 2 of 2

Channel	Call	Proposed Station City/State	ARN
51	WWJX	JACKSON MS	USERRECORD01

Stations Potentially Affected by Proposed Station

Chan	Call	City/State	Dist(km)	Status	Application Ref. No.
51	WPXX-TV	MEMPHIS TN	334.7	LIC	BLCDT -20020430ACC

\*\*\*\*\*

Analysis of Interference to Affected Station 1

Analysis of current record

Channel	Call	City/State	Application Ref. No.
51	WPXX-TV	MEMPHIS TN	BLCDT -20020430ACC

Stations Potentially Affecting This Station

Chan	Call	City/State	Dist(km)	Status	Application Ref. No.
51	WPGD-TV	HENDERSONVILLE TN	296.6	CP MOD	BMPCDT -20030826AOD
51	WWJX	JACKSON MS	334.7	APP	USERRECORD-01

Proposal causes no interference

\*\*\*\*\*

Analysis of Interference to Affected Station 2

Analysis of current record

Channel	Call	City/State	Application Ref. No.
51	WWJX	JACKSON MS	USERRECORD-01

Stations Potentially Affecting This Station

Chan	Call	City/State	Dist(km)	Status	Application Ref. No.
51	WPXX-TV	MEMPHIS TN	334.7	LIC	BLCDT -20020430ACC

Total scenarios = 1

Result key: 1  
Scenario 1 Affected station 2  
Before Analysis

Results for: 51A MS JACKSON USERRECORD01 APP  
HAAT 378.0 m, ATV ERP 177.0 kW

	POPULATION	AREA (sq km)
within Noise Limited Contour	667641	22878.2
not affected by terrain losses	667542	22849.9
lost to NTSC IX	0	0.0
lost to additional IX by ATV	764	8.1
lost to ATV IX only	764	8.1
lost to all IX	764	8.1

Potential Interfering Stations Included in above Scenario 1

51A TN MEMPHIS	BLCDT	20020430ACC	LIC
----------------	-------	-------------	-----

\*\*\*\*\*

FINISHED FINISHED FINISHED FINISHED FINISHED FINISHED

# APPENDIX

## DIRECTIONAL ANTENNA INFORMATION



Proposal Number

Revision

Date

**05 Mar 2008**

Call Letters

**WWJX**

Channel

**51**

Location

**Jackson, MS**

Customer

Antenna Type

**TFU-30GTH/VP-R 6T140****ELEVATION PATTERN**

RMS Gain at Main Lobe

**27.0 (14.31 dB)**

Beam Tilt

**0.75 Degrees**

RMS Gain at Horizontal

**18.7 (12.72 dB)**

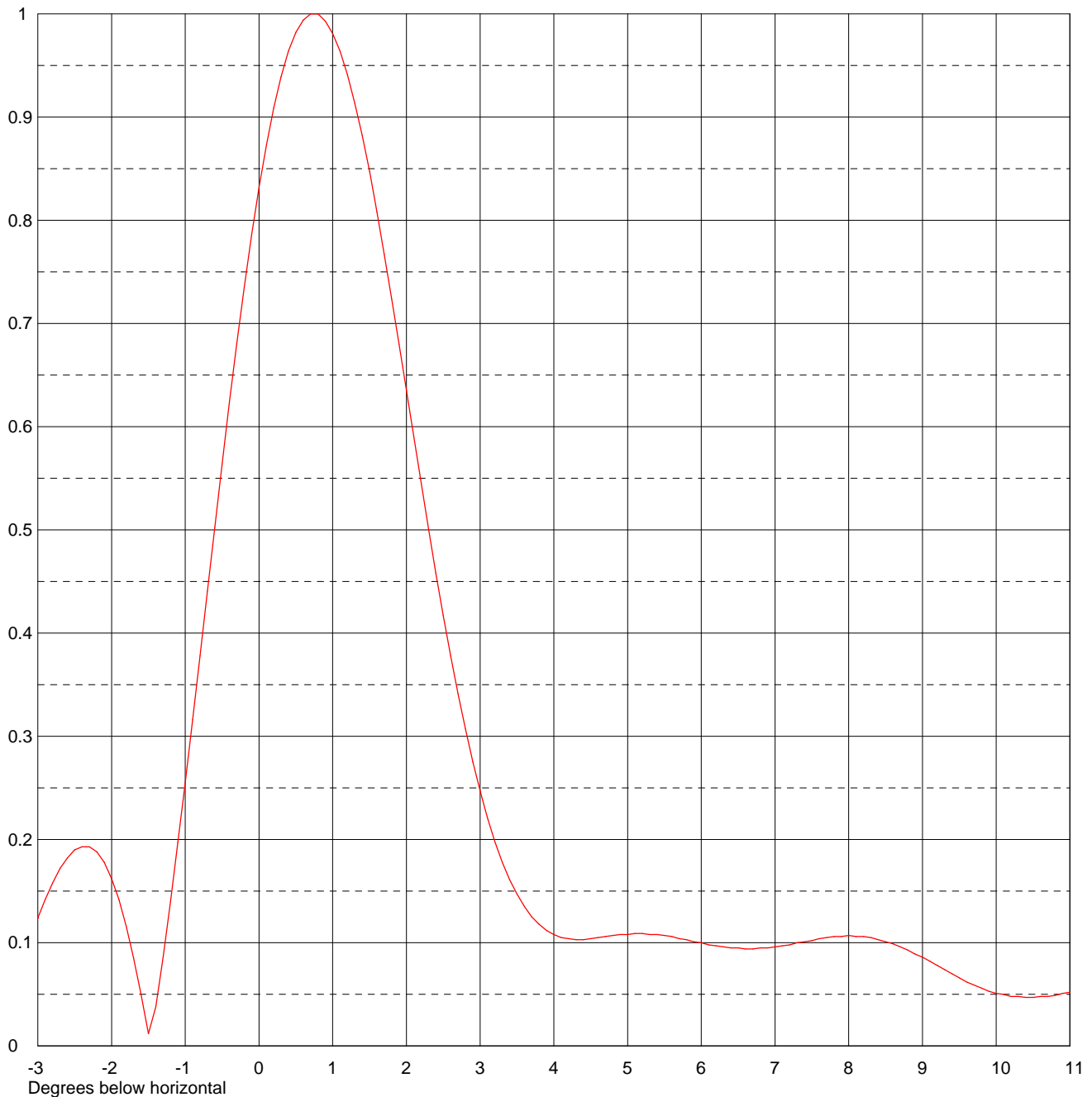
Frequency

**695.00 MHz**

Calculated / Measured

**Calculated**

Drawing #

**30G270075**

Remarks:



Proposal Number

Revision

Date

**05 Mar 2008**

Call Letters

**WWJX**

Channel

**51**

Location

**Jackson, MS**

Customer

Antenna Type

**TFU-30GTH/VP-R 6T140****ELEVATION PATTERN**

RMS Gain at Main Lobe

**27.0 (14.31 dB)**

Beam Tilt

**0.75 Degrees**

RMS Gain at Horizontal

**18.7 (12.72 dB)**

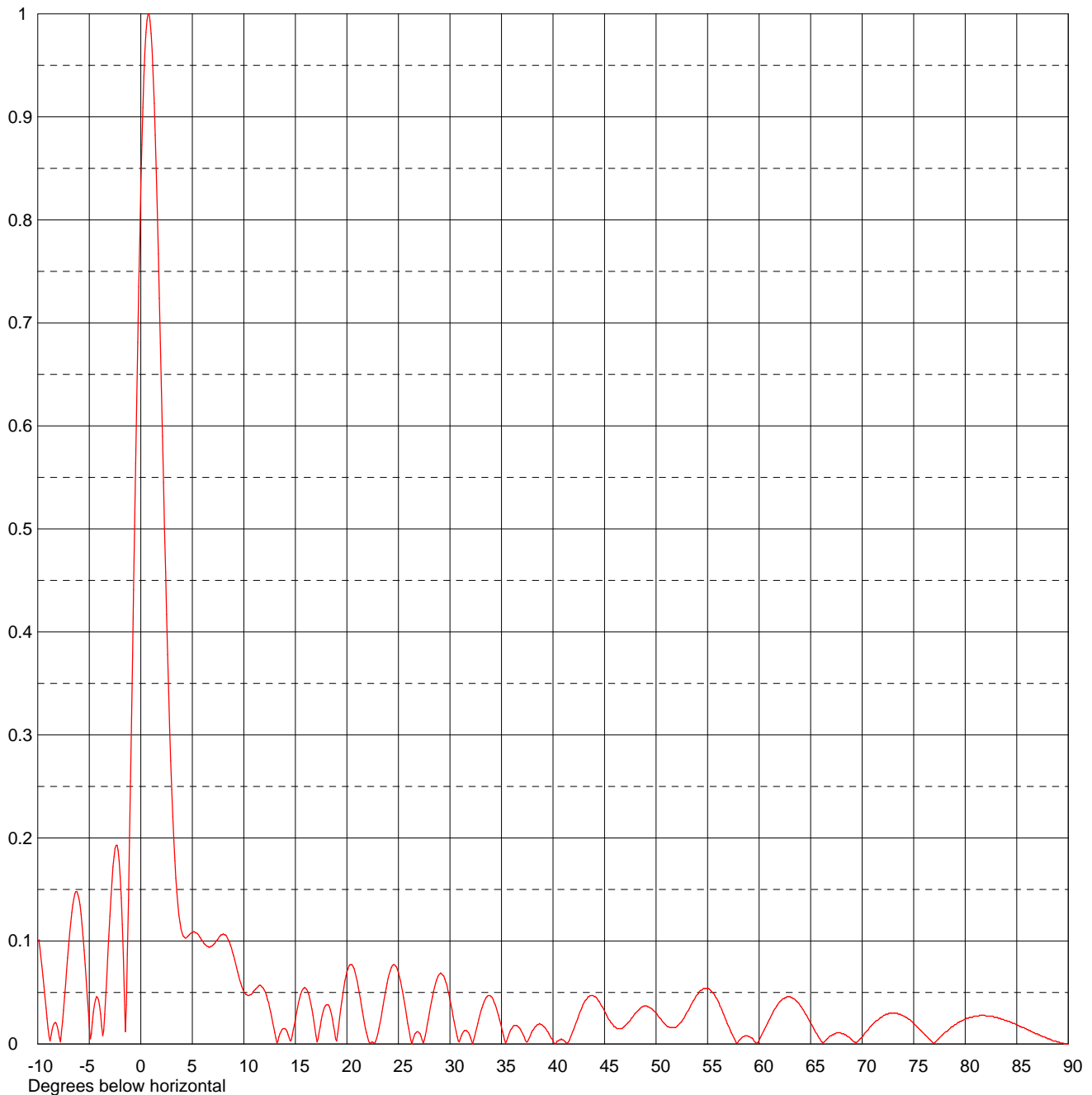
Frequency

**695.00 MHz**

Calculated / Measured

**Calculated**

Drawing #

**30G270075-90**

Remarks:





Proposal Number  
 Date **05 Mar 2008**  
 Call Letters **WWJX**  
 Location **Jackson, MS**  
 Customer  
 Antenna Type **TFU-30GTH/VP-R 6T140**

Revision  
 Channel **51**

## TABULATION OF ELEVATION PATTERN

Elevation Pattern Drawing # **30G270075-90**

Angle	Field	Angle	Field	Angle	Field	Angle	Field	Angle	Field	Angle	Field
-10.0	0.108	2.4	0.458	10.6	0.048	30.5	0.017	51.0	0.018	71.5	0.023
-9.5	0.066	2.6	0.378	10.8	0.049	31.0	0.005	51.5	0.016	72.0	0.027
-9.0	0.015	2.8	0.307	11.0	0.052	31.5	0.013	52.0	0.017	72.5	0.029
-8.5	0.018	3.0	0.247	11.5	0.057	32.0	0.006	52.5	0.022	73.0	0.030
-8.0	0.012	3.2	0.198	12.0	0.052	32.5	0.012	53.0	0.031	73.5	0.029
-7.5	0.033	3.4	0.161	12.5	0.035	33.0	0.032	53.5	0.040	74.0	0.027
-7.0	0.096	3.6	0.135	13.0	0.011	33.5	0.045	54.0	0.048	74.5	0.024
-6.5	0.141	3.8	0.118	13.5	0.010	34.0	0.046	54.5	0.053	75.0	0.020
-6.0	0.141	4.0	0.108	14.0	0.015	34.5	0.035	55.0	0.054	75.5	0.015
-5.5	0.091	4.2	0.104	14.5	0.003	35.0	0.016	55.5	0.050	76.0	0.010
-5.0	0.017	4.4	0.103	15.0	0.024	35.5	0.003	56.0	0.042	76.5	0.005
-4.5	0.038	4.6	0.105	15.5	0.048	36.0	0.015	56.5	0.030	77.0	0.001
-4.0	0.037	4.8	0.107	16.0	0.054	36.5	0.018	57.0	0.018	77.5	0.006
-3.5	0.029	5.0	0.108	16.5	0.039	37.0	0.011	57.5	0.007	78.0	0.011
-3.0	0.124	5.2	0.109	17.0	0.008	37.5	0.002	58.0	0.003	78.5	0.015
-2.8	0.158	5.4	0.108	17.5	0.023	38.0	0.013	58.5	0.007	79.0	0.019
-2.6	0.182	5.6	0.106	18.0	0.038	38.5	0.019	59.0	0.007	79.5	0.022
-2.4	0.193	5.8	0.103	18.5	0.029	39.0	0.018	59.5	0.003	80.0	0.024
-2.2	0.188	6.0	0.100	19.0	0.003	39.5	0.012	60.0	0.004	80.5	0.026
-2.0	0.162	6.2	0.097	19.5	0.041	40.0	0.003	60.5	0.014	81.0	0.027
-1.8	0.116	6.4	0.095	20.0	0.070	40.5	0.003	61.0	0.024	81.5	0.028
-1.6	0.050	6.6	0.094	20.5	0.077	41.0	0.004	61.5	0.034	82.0	0.027
-1.4	0.038	6.8	0.095	21.0	0.061	41.5	0.002	62.0	0.041	82.5	0.027
-1.2	0.140	7.0	0.096	21.5	0.032	42.0	0.014	62.5	0.045	83.0	0.026
-1.0	0.255	7.2	0.098	22.0	0.007	42.5	0.028	63.0	0.046	83.5	0.024
-0.8	0.378	7.4	0.101	22.5	0.002	43.0	0.040	63.5	0.043	84.0	0.023
-0.6	0.503	7.6	0.104	23.0	0.010	43.5	0.046	64.0	0.037	84.5	0.021
-0.4	0.624	7.8	0.106	23.5	0.037	44.0	0.046	64.5	0.029	85.0	0.019
-0.2	0.735	8.0	0.107	24.0	0.064	44.5	0.041	65.0	0.020	85.5	0.016
0.0	0.832	8.2	0.106	24.5	0.077	45.0	0.032	65.5	0.011	86.0	0.014
0.2	0.909	8.4	0.103	25.0	0.069	45.5	0.023	66.0	0.003	86.5	0.012
0.4	0.964	8.6	0.099	25.5	0.045	46.0	0.017	66.5	0.004	87.0	0.010
0.6	0.994	8.8	0.093	26.0	0.015	46.5	0.015	67.0	0.008	87.5	0.007
0.8	1.000	9.0	0.086	26.5	0.007	47.0	0.018	67.5	0.011	88.0	0.005
1.0	0.981	9.2	0.078	27.0	0.011	47.5	0.023	68.0	0.010	88.5	0.003
1.2	0.941	9.4	0.070	27.5	0.004	48.0	0.030	68.5	0.008	89.0	0.002
1.4	0.882	9.6	0.062	28.0	0.030	48.5	0.035	69.0	0.004	89.5	0.001
1.6	0.808	9.8	0.056	28.5	0.055	49.0	0.037	69.5	0.002	90.0	0.000
1.8	0.724	10.0	0.051	29.0	0.068	49.5	0.035	70.0	0.007		
2.0	0.635	10.2	0.048	29.5	0.063	50.0	0.030	70.5	0.013		
2.2	0.545	10.4	0.047	30.0	0.043	50.5	0.024	71.0	0.019		

Remarks:



Proposal Number

Revision

Date

05 Mar 2008

Call Letters

WWJX

Channel

51

Location

Jackson, MS

Customer

Antenna Type

TFU-30GTH/VP-R 6T140

### AZIMUTH PATTERN

Gain

1.40 (1.46 dB)

Frequency

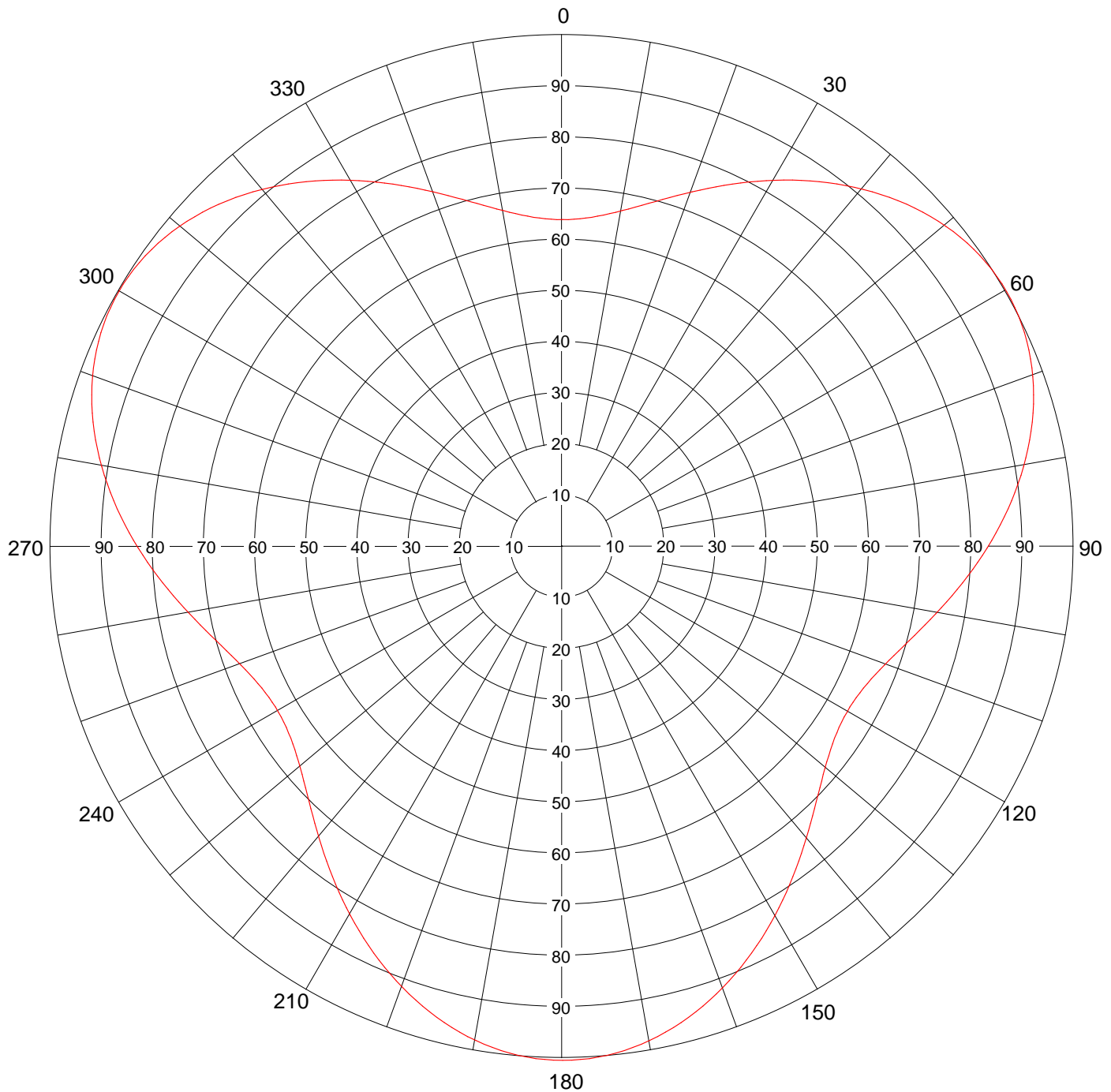
695 MHz

Calculated / Measured

Calculated

Drawing #

TFU-6T140 HP



Remarks:



Proposal Number  
 Date **05 Mar 2008**  
 Call Letters **WWJX** Channel **51**  
 Location **Jackson, MS**  
 Customer  
 Antenna Type **TFU-30GTH/VP-R 6T140**

## TABULATION OF AZIMUTH PATTERN

Azimuth Pattern Drawing # **TFU-6T140 HP**

Angle	Field	Angle	Field	Angle	Field	Angle	Field	Angle	Field	Angle	Field	Angle	Field	Angle	Field
0	0.641	45	0.949	90	0.828	135	0.700	180	1.000	225	0.700	270	0.828	315	0.949
1	0.641	46	0.955	91	0.819	136	0.707	181	1.000	226	0.693	271	0.837	316	0.942
2	0.642	47	0.961	92	0.810	137	0.715	182	0.999	227	0.686	272	0.846	317	0.935
3	0.643	48	0.966	93	0.801	138	0.723	183	0.998	228	0.680	273	0.855	318	0.928
4	0.645	49	0.971	94	0.792	139	0.731	184	0.996	229	0.674	274	0.864	319	0.921
5	0.648	50	0.976	95	0.783	140	0.739	185	0.994	230	0.668	275	0.872	320	0.913
6	0.651	51	0.981	96	0.774	141	0.748	186	0.991	231	0.663	276	0.881	321	0.905
7	0.654	52	0.984	97	0.765	142	0.757	187	0.988	232	0.659	277	0.889	322	0.897
8	0.659	53	0.988	98	0.757	143	0.765	188	0.984	233	0.654	278	0.897	323	0.889
9	0.663	54	0.991	99	0.748	144	0.774	189	0.981	234	0.651	279	0.905	324	0.881
10	0.668	55	0.994	100	0.739	145	0.783	190	0.976	235	0.648	280	0.913	325	0.872
11	0.674	56	0.996	101	0.731	146	0.792	191	0.971	236	0.645	281	0.921	326	0.864
12	0.680	57	0.998	102	0.723	147	0.801	192	0.966	237	0.643	282	0.928	327	0.855
13	0.686	58	0.999	103	0.715	148	0.810	193	0.961	238	0.642	283	0.935	328	0.846
14	0.693	59	1.000	104	0.707	149	0.819	194	0.955	239	0.641	284	0.942	329	0.837
15	0.700	60	1.000	105	0.700	150	0.828	195	0.949	240	0.641	285	0.949	330	0.828
16	0.707	61	1.000	106	0.693	151	0.837	196	0.942	241	0.641	286	0.955	331	0.819
17	0.715	62	0.999	107	0.686	152	0.846	197	0.935	242	0.642	287	0.961	332	0.810
18	0.723	63	0.998	108	0.680	153	0.855	198	0.928	243	0.643	288	0.966	333	0.801
19	0.731	64	0.996	109	0.674	154	0.864	199	0.921	244	0.645	289	0.971	334	0.792
20	0.739	65	0.994	110	0.668	155	0.872	200	0.913	245	0.648	290	0.976	335	0.783
21	0.748	66	0.991	111	0.663	156	0.881	201	0.905	246	0.651	291	0.981	336	0.774
22	0.757	67	0.988	112	0.659	157	0.889	202	0.897	247	0.654	292	0.984	337	0.765
23	0.765	68	0.984	113	0.654	158	0.897	203	0.889	248	0.659	293	0.988	338	0.757
24	0.774	69	0.981	114	0.651	159	0.905	204	0.881	249	0.663	294	0.991	339	0.748
25	0.783	70	0.976	115	0.648	160	0.913	205	0.872	250	0.668	295	0.994	340	0.739
26	0.792	71	0.971	116	0.645	161	0.921	206	0.864	251	0.674	296	0.996	341	0.731
27	0.801	72	0.966	117	0.643	162	0.928	207	0.855	252	0.680	297	0.998	342	0.723
28	0.810	73	0.961	118	0.642	163	0.935	208	0.846	253	0.686	298	0.999	343	0.715
29	0.819	74	0.955	119	0.641	164	0.942	209	0.837	254	0.693	299	1.000	344	0.707
30	0.828	75	0.949	120	0.641	165	0.949	210	0.828	255	0.700	300	1.000	345	0.700
31	0.837	76	0.942	121	0.641	166	0.955	211	0.819	256	0.707	301	1.000	346	0.693
32	0.846	77	0.935	122	0.642	167	0.961	212	0.810	257	0.715	302	0.999	347	0.686
33	0.855	78	0.928	123	0.643	168	0.966	213	0.801	258	0.723	303	0.998	348	0.680
34	0.864	79	0.921	124	0.645	169	0.971	214	0.792	259	0.731	304	0.996	349	0.674
35	0.872	80	0.913	125	0.648	170	0.976	215	0.783	260	0.739	305	0.994	350	0.668
36	0.881	81	0.905	126	0.651	171	0.981	216	0.774	261	0.748	306	0.991	351	0.663
37	0.889	82	0.897	127	0.654	172	0.984	217	0.765	262	0.757	307	0.988	352	0.659
38	0.897	83	0.889	128	0.659	173	0.988	218	0.757	263	0.765	308	0.984	353	0.654
39	0.905	84	0.881	129	0.663	174	0.991	219	0.748	264	0.774	309	0.981	354	0.651
40	0.913	85	0.872	130	0.668	175	0.994	220	0.739	265	0.783	310	0.976	355	0.648
41	0.921	86	0.864	131	0.674	176	0.996	221	0.731	266	0.792	311	0.971	356	0.645
42	0.928	87	0.855	132	0.680	177	0.998	222	0.723	267	0.801	312	0.966	357	0.643
43	0.935	88	0.846	133	0.686	178	0.999	223	0.715	268	0.810	313	0.961	358	0.642
44	0.942	89	0.837	134	0.693	179	1.000	224	0.707	269	0.819	314	0.955	359	0.641

Remarks: