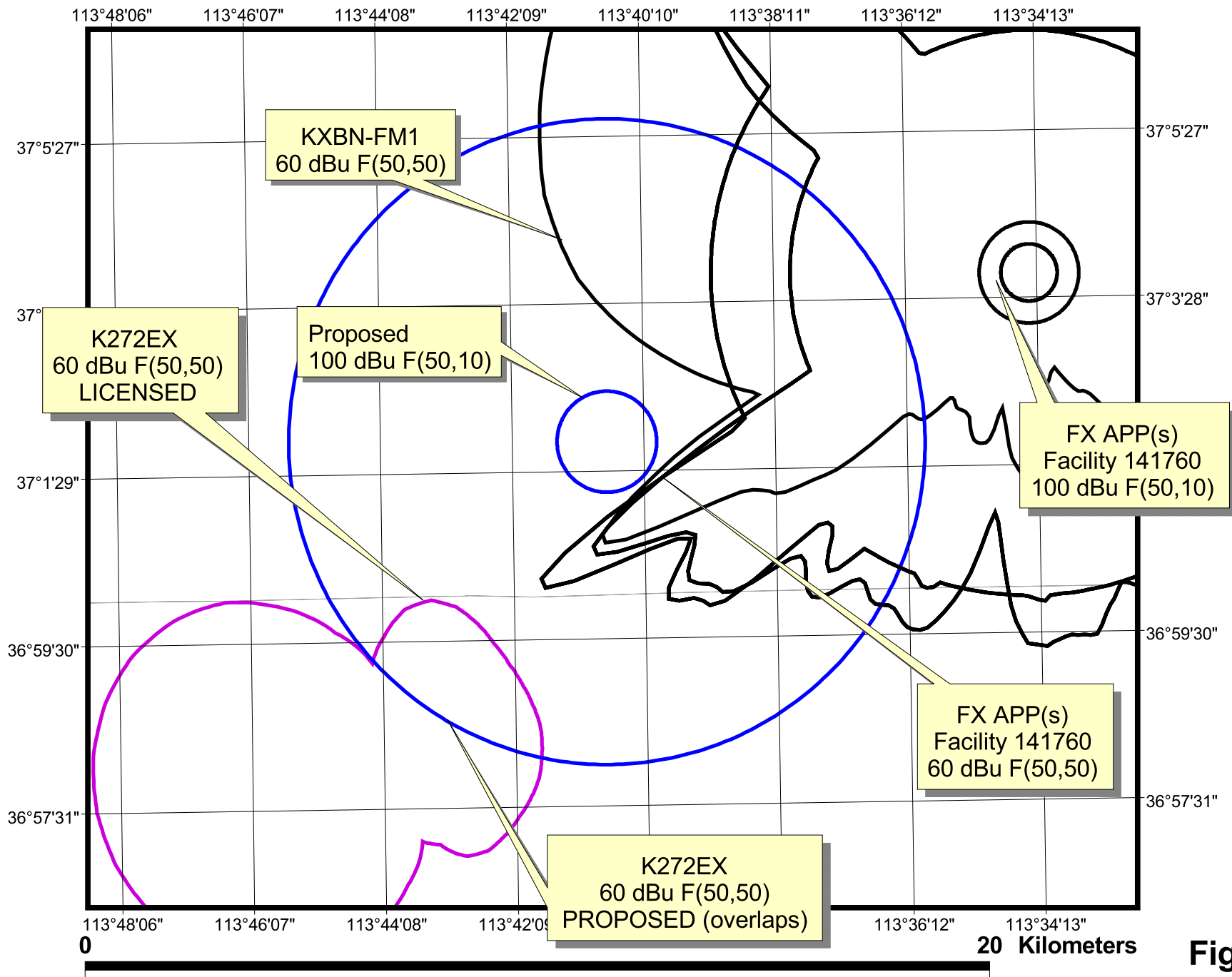


**Table 1**

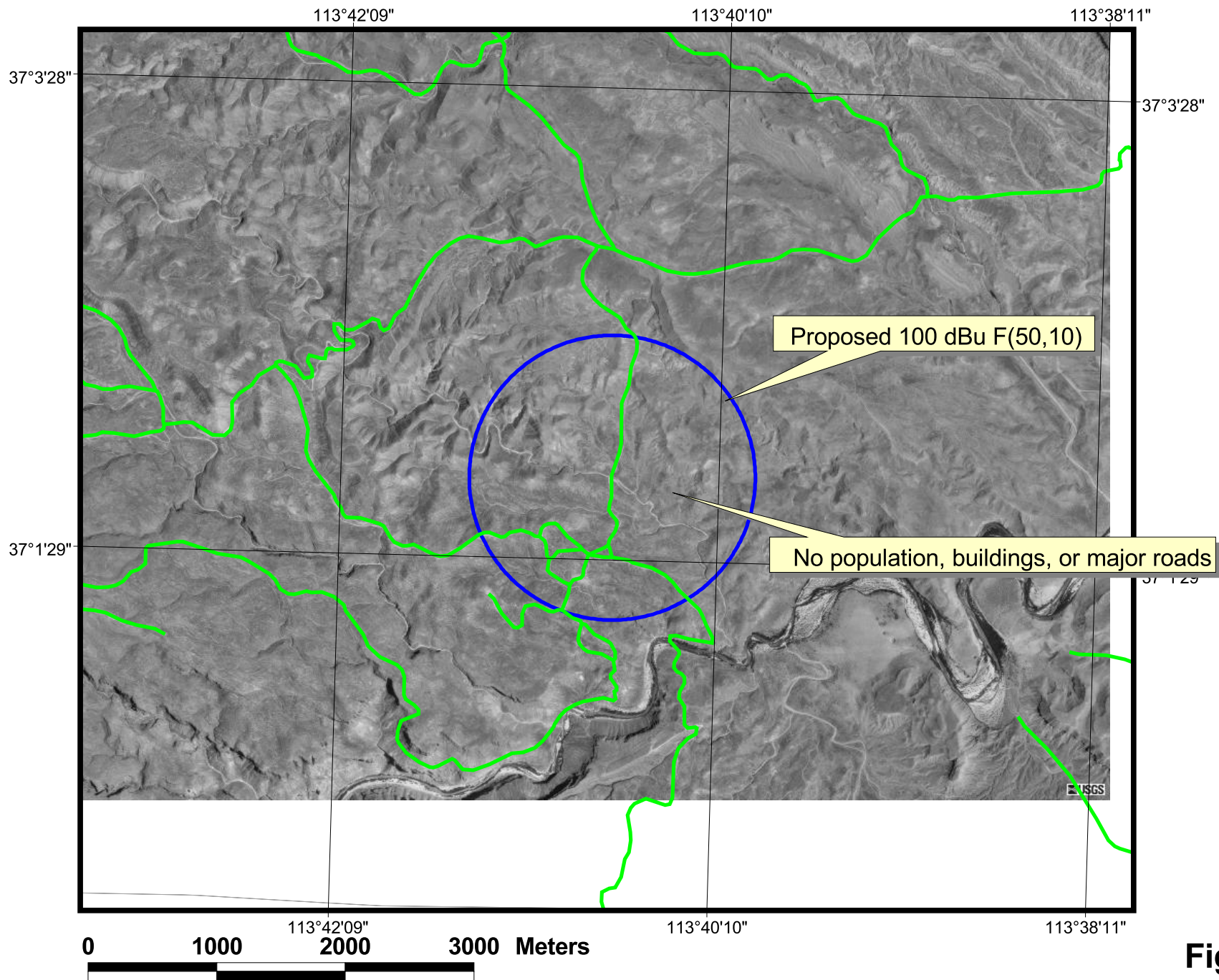
**K272EX Minor Change To Licensed Facility (to CH219), September 3, 2009  
Channel Study**

Chan	Class	Call Letters	Type	Status	City	State	Country	Owner	Distance (km)	Bearing TO (deg)	Req. Dist. (km)	Clearance (km)
216	A	KAIZ	FM	LIC	MESQUITE	NV	US	EDUCATIONAL MEDIA FOUNDATION	56.0	254.8	30.5	25.5
216	D	K216EV	FX	LIC	LOGANDALE	NV	US	FAITH COMMUNICATIONS CORPORA	84.1	243.0	1.6	82.5
216	C3	KSUU	FM	LIC	CEDAR CITY	UT	US	SOUTH STATE UNIVERSITY	86.0	36.9	38.5	47.5
217	C3	KXDS	FM	CP	SANTA CLARA	UT	US	DIXIE COLLEGE	26.4	140.8	43.0	-16.6 (see Figure 2)
217	C3	KXDS	FM	LIC	ST. GEORGE	UT	US	DIXIE COLLEGE	26.4	140.8	38.7	-12.2 (see Figure 2)
217	A	KRRA	FM	CP	PARAGONAH	UT	US	RON ELMORE MINISTRIES INC	126.9	39.0	8.6	118.3
217	C3	KQLN	FM	CP	ALAMO	NV	US	TALK RADIO OF PAHRUMP, INC.	137.5	286.4	16.9	120.6
219	C1	KLNR	FM	LIC	PANACA	NV	US	NEVADA PUBLIC RADIO	124.4	320.7	82.7	41.8
221	D	KXBN-FM1	FB	LIC	ST. GEORGE	UT	US	CCR-ST. GEORGE IV, LLC	9.9	68.8	7.9	2.0
221	D	NEW	FX	APP	ST. GEORGE	UT	US	BRIGHAM YOUNG UNIVERSITY	10.1	69.2	8.2	1.9
221	D	NEW	FX	APP	ST. GEORGE	UT	US	BRIGHAM YOUNG UNIVERSITY	10.1	69.2	7.7	2.4
221	C	KXBN	FM	LIC	CEDAR CITY	UT	US	CCR-ST. GEORGE IV, LLC	73.4	21.5	78.4	-5.0 (see Figure 2)
222	D	K222BM	FX	LIC	MOAPA	NV	US	EDGEWATER BROADCASTING, INC.	83.7	242.7	4.8	78.9
272	C2	KCDC	FM	APP	LA VERKIN	UT	US	COCHISE BROADCASTING LLC	45.8	51.0	15.0	30.8



**Figure 1**

**K272EX LAS VEGAS, NV: MINOR CHANGE TO LICENSED FACILITY**  
 Minor change showing overlap of 60 dBu contours and contour protection



**K272EX LAS VEGAS, NV: MINOR CHANGE TO LICENSED FACILITY**  
**2nd Adjacent Channel study with respect to KXBN and KXDS**

## Radiofrequency Electromagnetic Exposure Analysis

Source	Height AGL(m)	Antenna type	Bays	Horizontal ERP (kw)	Vertical ERP (kw)	Power Density $\mu\text{W}/\text{cm}^2$ at 2 meters AGL				
						within 10 meters distance	% controlled environment limit (1000 $\mu\text{W}/\text{cm}^2$ )	Max. PD	% uncontrolled environment limit (200 $\mu\text{W}/\text{cm}^2$ )	Distance to maximum PD (m)
PROPOSED	9	SHI 6812B	1	0.250	0.250	72.6	7.3%	72.6	36.3%	7.2
						72.6	<b>7.3%</b>	72.6	<b>36.3%</b>	7.2

The proposed facility is excluded from environmental processing under 47. C.F.R. Section 1.1306 (i.e., The facility will not have a significant environmental impact and complies with the maximum permissible radiofrequency electromagnetic exposure limits for controlled and uncontrolled environments).

Calculations made using Equation 10 from OET Bulletin 65 and elevation pattern provided by antenna manufacturer