

Exhibit 13

TED A. McCALL
P O Box 2115
EASLEY, SC 29641-2115
W242BX

Minor Change

**ComStudy 2.2 search of channel 242 (96.3 MHz Class D)
at 34-56-27.0 N, 82-24-41.0 W.**

CALL	CITY	ST	CHN	CL	DIST	SEP	BRNG	CLEARANCE
W245CH	TRAVELERS REST	SC	245	D	0.06	0.00	1.0	-60.64 dB*b
W242BX	GREENVILLE	SC	242	D	0.00	0.00	90.0	-56.96 dB*a
WGOG	WALHALLA	SC	242	A	59.85	0.00	261.4	-44.13 dB*c
WPLS-LP	GREENVILLE	SC	240	LP100	3.34	6.00	226.8	-17.54 dB*d
WOXL-FM	BILTMORE FOREST	NC	243	C2	76.45	0.00	343.5	-1.16 dB*e
WRBN	CLAYTON	GA	242	A	91.83	0.00	267.9	0.03 dB
WHQC	SHELBY	NC	241	C	123.64	0.00	67.3	0.17 dB
WRBN	CLAYTON	GA	242	A	85.32	0.00	268.4	3.94 dB
WOXL-FM	BILTMORE FOREST	NC	243	C3	76.45	0.00	343.5	5.39 dB
WKSP	AIKEN	SC	242	C2	146.27	0.00	162.2	6.95 dB
W240BO	WOODRUFF	SC	240	D	38.50	0.00	122.2	7.86 dB
870831MK	BILTMORE FOREST	NC	243	A	65.87	0.00	353.4	10.87 dB
WOXL-FM	BILTMORE FOREST	NC	243	C3	75.85	0.00	341.8	11.93 dB
WLTE	PENDLETON	SC	240	A	33.09	0.00	212.2	12.50 dB
W242BN	COMMERCE	GA	242	D	126.78	0.00	231.0	15.36 dB
WHMR-LP	WHITMIRE	SC	243	LP100	87.52	13.00	123.6	17.01 dB
WKSP	AIKEN	SC	242	C2	164.43	0.00	165.4	18.67 dB
WOXL-FM	BILTMORE FOREST	NC	243	C2	58.88	0.00	357.7	19.21 dB

*a This is the current licensed site for this application.

*b See attached Waiver Request showing no predicted interference to W245CH.

*c WGOG is changing channels to 269 which should be completed by 08/06/2015. If WGOG has not completed the License app for Channel 269 by the time this application is processed, I request the grant of this application conditional upon the completion of the WGOG channel change to 269.

*d WPLS-LP is on 2nd adjacent channel to this application and does not require protection by this application.

*e See contour map that shows no interference overlap with WOXL-FM CP protected 60 dbu contour.

Exhibit 13
(Compliance with CFR 74.1204)
And Waiver Request
W242BX, Greenville SC

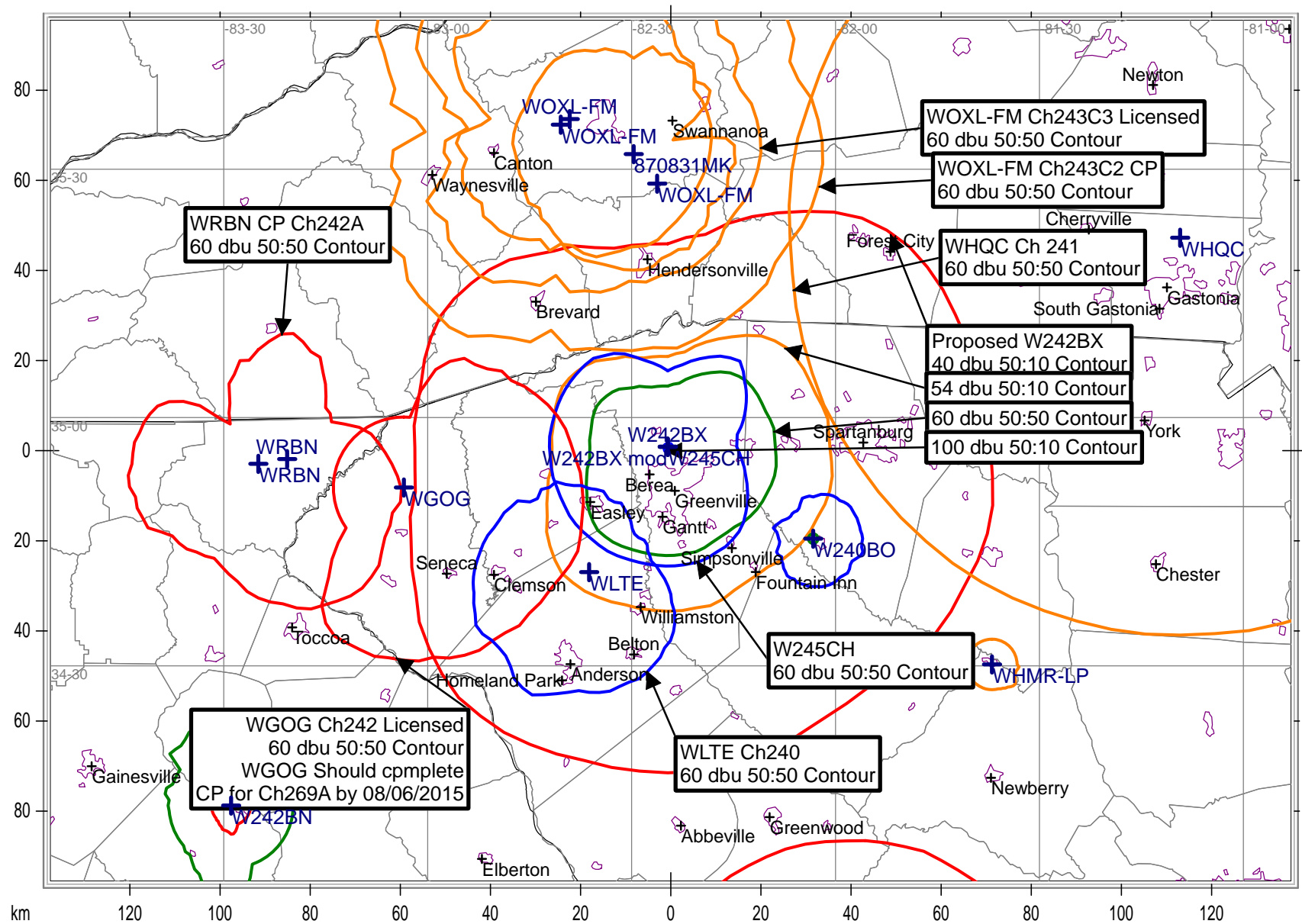
The proposed W242BX FM translator site is located within the protected 60 dBu contour of third adjacent channel translator W245CH, Travelers Rest, SC and on a tower less than 100 meters from W245CH and can be considered co-located. The predicted F(50-50) field strength of W245CH at the proposed translator site is >120 dbu. Therefore, the respective predicted interfering contour generated by the proposed FM Translator is 160 dbu and occurs within 2 meters of the transmit antenna.

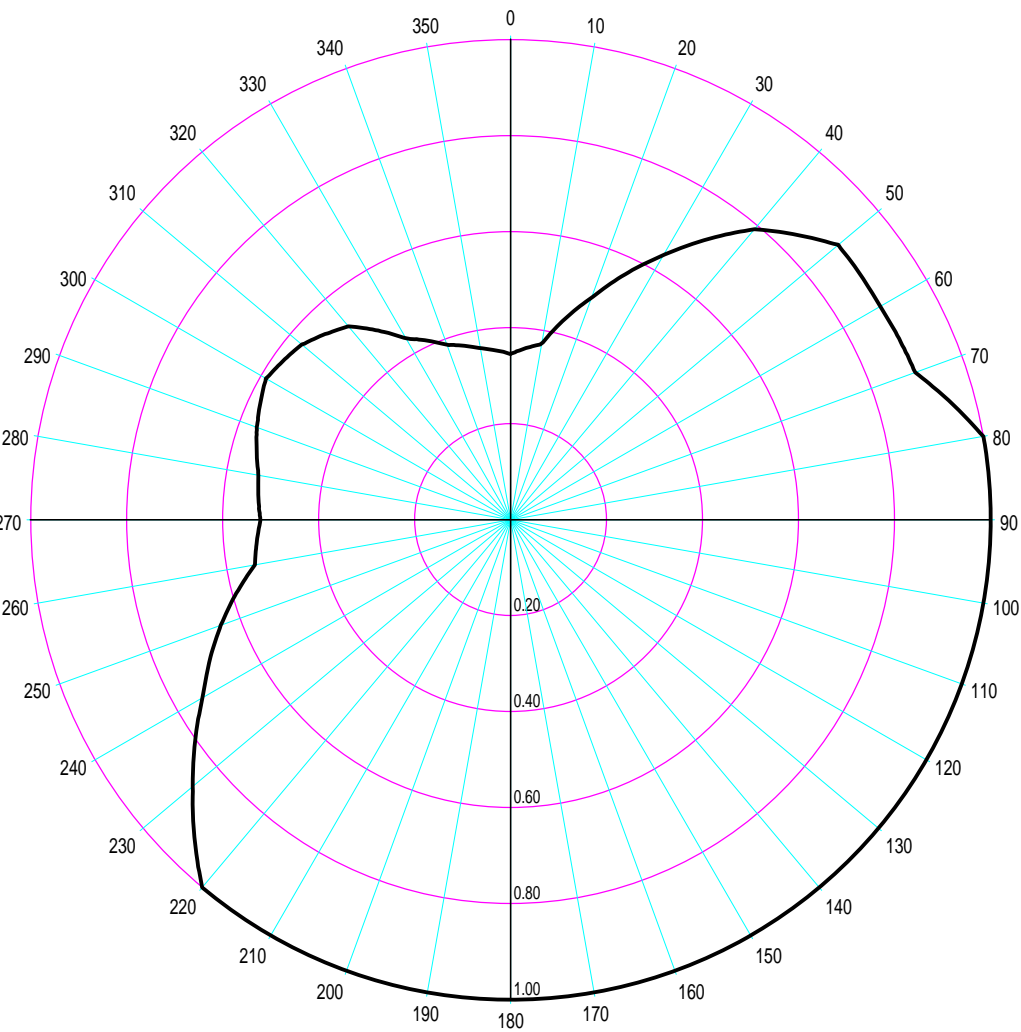
I, Ted A McCall, have inspected this site and it is located a mountain top with many communication towers. There are no occupied homes or offices buildings within 100 meters of this site.

Therefore, Ted A McCall respectfully requests a waiver of C.F.R. 74.1204 based on the interfering contour not reaching the ground and no population within the area of predicted interference.

Should there be any actual interference to W245CH, W242Bx will reduce power or suspend operation until the problem can be corrected.

W242BX Contours





Azim	Rel.FS	ERP [W]	dBk
0.0	0.346	29.929	-15.239
5.0	0.359	32.220	-14.919
10.0	0.372	34.596	-14.610
15.0	0.432	46.656	-13.311
20.0	0.492	60.516	-12.181
25.0	0.564	79.524	-10.995
30.0	0.637	101.442	-9.938
35.0	0.713	127.092	-8.959
40.0	0.790	156.025	-8.068
45.0	0.840	176.400	-7.535
50.0	0.891	198.470	-7.023
55.0	0.890	198.025	-7.033
60.0	0.889	197.580	-7.043
65.0	0.893	199.362	-7.004
70.0	0.897	201.152	-6.965
75.0	0.948	224.676	-6.484
80.0	1.000	250.000	-6.021
85.0	1.000	250.000	-6.021
90.0	1.000	250.000	-6.021
95.0	1.000	250.000	-6.021
100.0	1.000	250.000	-6.021
105.0	1.000	250.000	-6.021
110.0	1.000	250.000	-6.021
115.0	1.000	250.000	-6.021
120.0	1.000	250.000	-6.021
125.0	1.000	250.000	-6.021
130.0	1.000	250.000	-6.021
135.0	1.000	250.000	-6.021
140.0	1.000	250.000	-6.021
145.0	1.000	250.000	-6.021
150.0	1.000	250.000	-6.021
155.0	1.000	250.000	-6.021
160.0	1.000	250.000	-6.021
165.0	1.000	250.000	-6.021
170.0	1.000	250.000	-6.021
175.0	1.000	250.000	-6.021
180.0	1.000	250.000	-6.021

Azim	Rel.FS	ERP [W]	dBk
185.0	1.000	250.000	-6.021
190.0	1.000	250.000	-6.021
195.0	1.000	250.000	-6.021
200.0	1.000	250.000	-6.021
205.0	1.000	250.000	-6.021
210.0	1.000	250.000	-6.021
215.0	1.000	250.000	-6.021
220.0	1.000	250.000	-6.021
225.0	0.932	217.156	-6.632
230.0	0.865	187.056	-7.280
235.0	0.803	161.202	-7.926
240.0	0.741	137.270	-8.624
245.0	0.692	119.716	-9.218
250.0	0.643	103.362	-9.856
255.0	0.592	87.616	-10.574
260.0	0.541	73.170	-11.357
265.0	0.531	70.490	-11.519
270.0	0.522	68.121	-11.667
275.0	0.528	69.696	-11.568
280.0	0.534	71.289	-11.470
285.0	0.548	75.076	-11.245
290.0	0.563	79.242	-11.010
295.0	0.576	82.944	-10.812
300.0	0.589	86.730	-10.618
305.0	0.578	83.521	-10.782
310.0	0.568	80.656	-10.934
315.0	0.547	74.802	-11.261
320.0	0.526	69.169	-11.601
325.0	0.481	57.840	-12.378
330.0	0.436	47.524	-13.231
335.0	0.412	42.436	-13.723
340.0	0.388	37.636	-14.244
345.0	0.375	35.156	-14.540
350.0	0.363	32.942	-14.822
355.0	0.354	31.329	-15.041



Audio Division

(202)-418-2700

FM and TV Propagations Curves Calculations

[FCC](#) > [MB](#) > [Audio Division](#) > [FM and TV Curves Calculations](#)

[FCC site map](#)

Results -- FM and TV Propagation Curves Calculations

Free Space equation used, not curves

Results of Calculation

Distance to Contour = 0.001 km

[Back to Numeric Entries](#)

[Back to Initial Selections](#)

For input data from Pages 1 and 2:

ERP entered = 0.250 kW

HAAT entered = 350.00 meters

Field Strength entered = 160.000 dBu

Find the Distance to the Contour, Given a Field Strength

F(50,10) curves for interfering contours

FM and NTSC analog TV Channels 2 through 6

[Back to Numeric Entries](#)

[Back to Initial Selections](#)

Comments on this program may be referred to [Dale Bickel](#)

[FCC Home](#) | [Search](#) | [RSS](#) | [Updates](#) | [E-Filing](#) | [Initiatives](#) | [Consumers](#) | [Find People](#)

If you would like more information pertaining to the Media Bureau, please call: (202) 418-7200.

Federal Communications
Commission

445 12th Street SW
Washington, DC 20554

[More FCC Contact Information...](#)

Phone: 1-888-CALL-FCC (1-888-
225-5322)

TTY: 1-888-TELL-FCC (1-888-
835-5322)

Fax: 1-866-418-0232

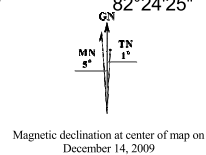
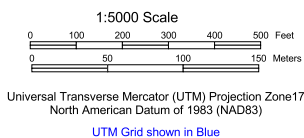
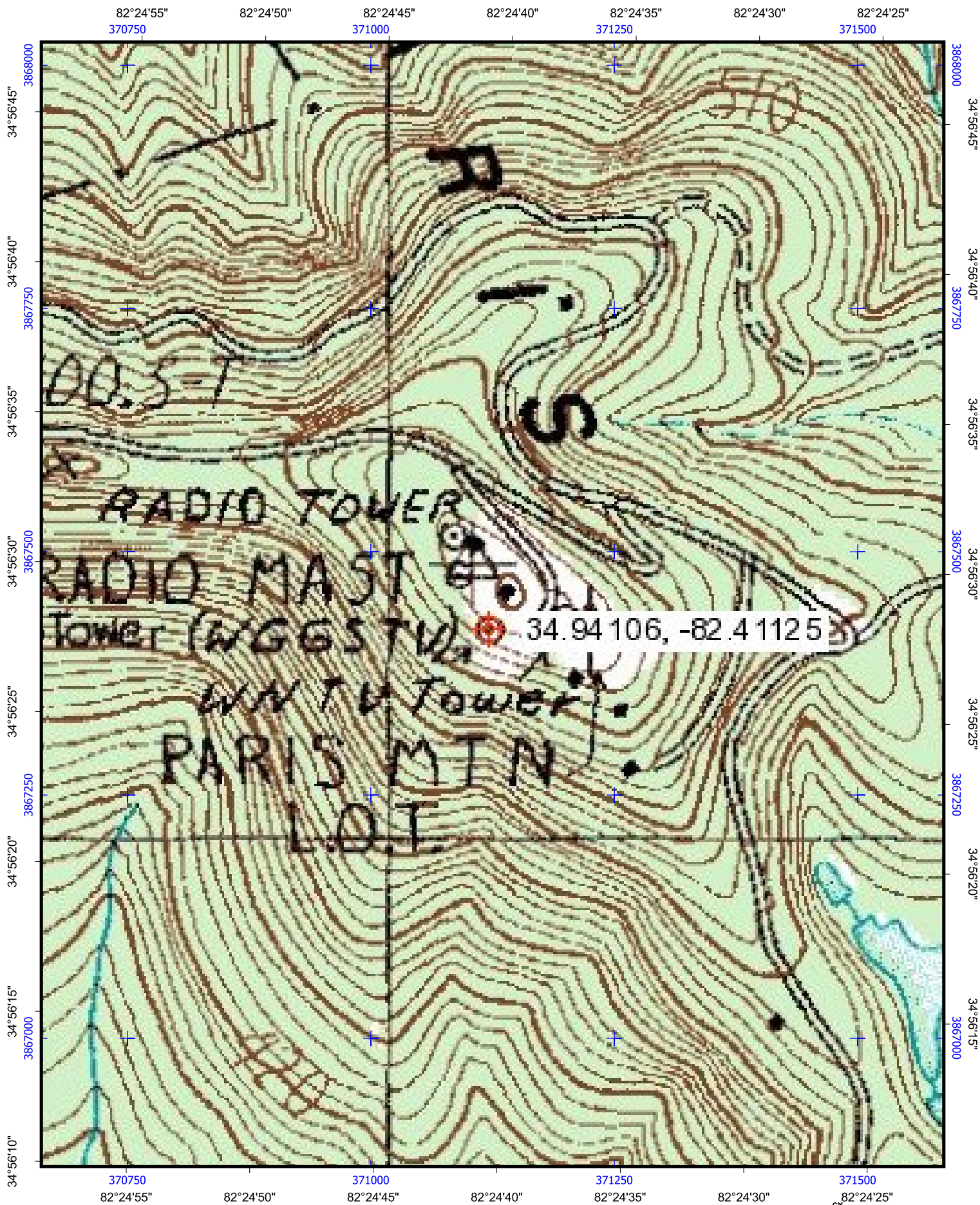
E- fccinfo@fcc.gov
mail:

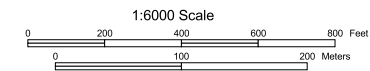
- [Privacy Policy](#)

- [Website Policies & Notices](#)

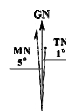
- [Required Browser Plug-ins](#)

- [Freedom of Information Act](#)





Universal Transverse Mercator (UTM) Projection Zone17
North American Datum of 1983 (NAD83)
UTM Grid shown in Blue



Magnetic declination at center of map on
December 14, 2009