

Channel Study

REFERENCE		CH# 244D - 96.7 MHz, Pwr= 0.027 kW, HAAT=83.0M, COR= 162 M						DISPLAY DATES			
35 06 28.0 N.		Average Protected F(50-50)= 6.7 km						DATA 06-27-07			
89 59 22.0 W.								SEARCH 06-27-07			
CH CITY	CALL	TYPE STATE	AZI. <--	DIST FILE #	LAT. LNG.	Pwr(kW) HAAT(M)	INT(km) COR(M)	PRO(km) LICENSEE	*IN* (Overlap in km)	*OUT*	
246C1 Memphis	WHRK	LIC CN TN	339.4 159.4	13.67 BLH5591	35 13 23.0 90 02 33.0	100.000 160	7.3 238	59.7 Cc Licenses, Llc	-0.72	-46.37*	
244D Memphis	W244BY	CP C TN	143.7 323.7	0.38 BMPFT20060323AHP	35 06 18.0 89 59 13.0	0.055 64	23.5 130	7.0 Educational Media Foundati	-29.32*	-27.11*	
244C2 Newport	KOKR	LIC CN AR	288.2 107.4	138.25 BLH19971020KD	35 29 16.0 91 26 13.0	40.000 210	140.4 271	56.2 Newport Broadcasting Compa	-9.28	58.13	
241C3 Tunica	WIVG	LIC ZCX MS	200.4 20.3	45.12 BLH20060119ACX	34 43 36.0 90 09 43.0	9.500 161	3.9 227	39.1 Flinn Broadcasting Corpora	34.63	5.68	
241C3 Tunica	WIVG	CP ZCX MS	200.4 20.3	45.12 BPH20060621AAK	34 43 36.0 90 09 43.0	4.100 246	3.4 312	39.0 Flinn Broadcasting Corpora	35.06	5.75	
243A Holly Springs	AP5925	APP CX MS	138.5 318.7	61.60 BNPH20070502AAS	34 41 32.0 89 32 33.0	6.000 111	45.7 236	29.7 George S. Flinn, Jr.	9.58	23.01	
244A Bolivar	WMOD	LIC CN TN	80.7 261.3	101.28 BMLH19910730KC	35 15 00.0 88 53 28.0	3.000 102	76.3 223	24.5 Wmod, Inc.	18.51	55.24	
242C1 Blytheville	KHLS	LIC NCX AR	6.4 186.5	88.33 BLH20020723AAB	35 53 56.0 89 52 48.0	100.000 135	6.7 207	56.4 Sudbury Services, Inc.	74.79	31.53	
243A Holly Springs	AU7057678	VAC MS	138.5 318.7	61.60 RM10221	34 41 32.0 89 32 33.0	6.000 -125	23.5 0	15.8 Holly Springs Radio	31.85	36.93	
243D Holly Springs	W243BB	CP C MS	123.1 303.5	63.06 BMPFT20070611AKF	34 47 48.0 89 24 42.0	0.013 120	9.6 254	6.8 Horizon Christian Fellowsh	47.02	47.06	
243A Holly Springs	AP9970	APP MS	138.5 318.7	61.60 BSFH20061219AFQ	34 41 32.0 89 32 33.0	0.000 -125	0.0 0	0.0 Flinn Jr, George S	55.33	52.68	
243A Holly Springs	AP4203	APP MS	139.1 319.3	61.92 BSFED20061212CFW	34 41 10.3 89 32 43.9	0.000 -126	0.0 0	0.0 American Family Associatio	55.67	53.03	
244A Pontotoc	WSEL-FM	LIC HN MS	135.0 315.6	133.78 BLH3172	34 15 10.0 88 57 36.0	3.000 87	73.5 206	22.7 Ollie Collins, Jr.	53.90	89.75	

Terrain database is NGDC 30 SEC

ERP and HAAT on direct-line with reference station.

"*"affixed to 'IN' or 'Out' values = site inside protected contour.

Compliance with C.F.R. 74.1204

The proposed FM Translator is located within the protected 60 dBu contour of second adjacent channel station WHRK, channel 246C1, Memphis, TN. The predicted F(50-50) field strength of WHRK at the proposed translator site is 89.1 dBu, (see Exhibit 12A-1). Therefore, the respective predicted interfering contour generated by the proposed FM Translator is 129.1 dBu. This interfering contour extends approximately 12.8 meters from the proposed transmit antenna, and the area of overlap does not reach the ground. The antenna will be mounted on a pole, two meters above the roof of a 67 meter building/grainery tower which houses grain only; therefore the building is not a regularly occupied structure.

To confirm the absence of population within the interference aperture, EMF has examined the attached topographic map (see Exhibit 12B) and aerial photos (see Exhibits 12C, 12C-1 and 12C-2), which indicate a lack of structures near the proposed tower which could be tall enough to enter the 12.8 meter interference aperture.

Therefore, EMF respectfully requests a waiver of C.F.R 74.1204 based on no population within the area of predicted interference.

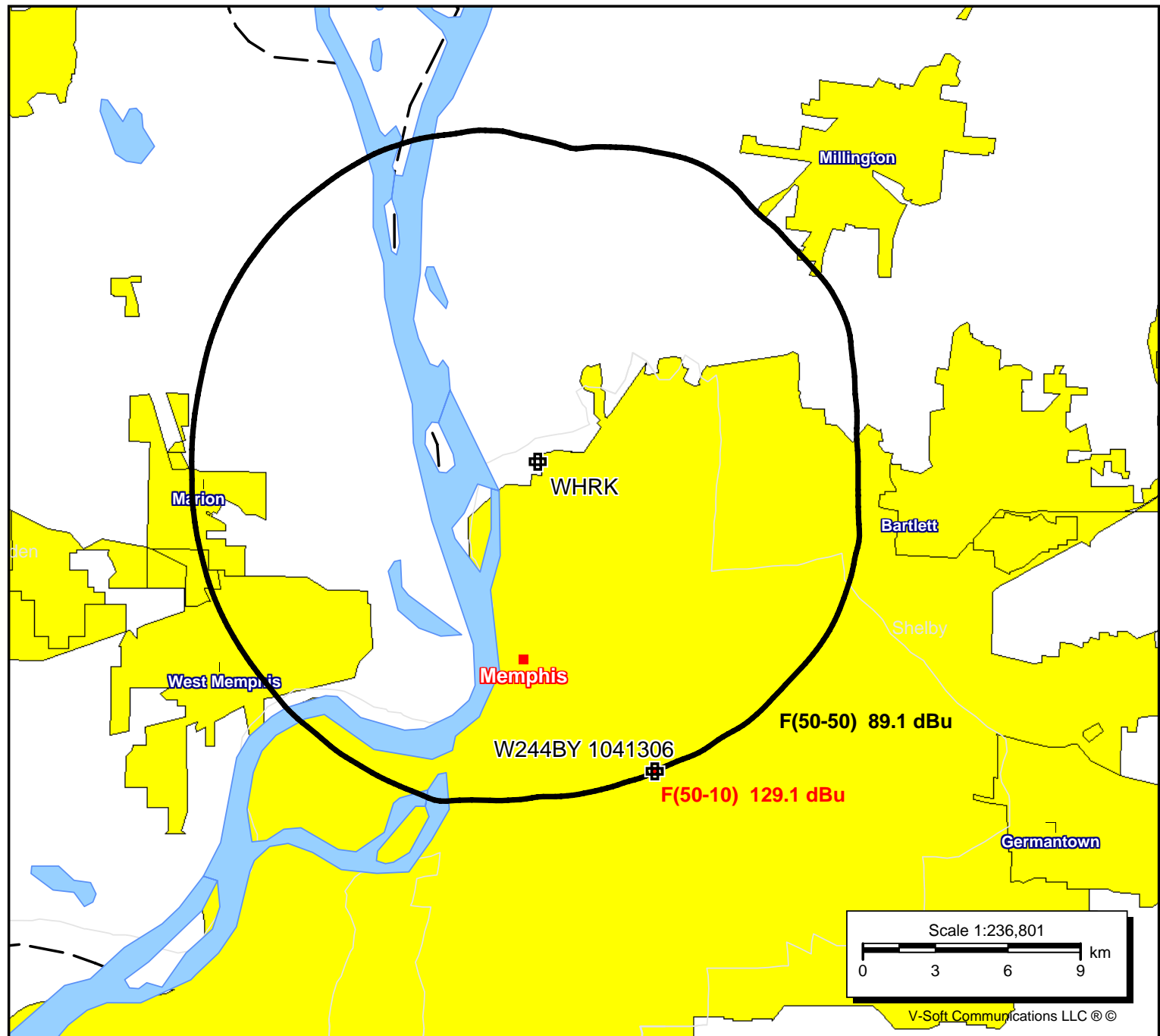
W244BY 1041306

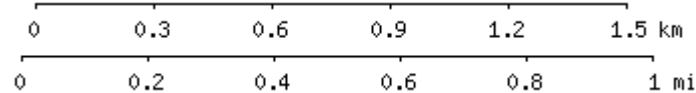
Latitude: 35-06-28 N
Longitude: 089-59-22 W
ERP: 0.027 kW
Channel: 244
Frequency: 96.7 MHz
AMSL Height: 162.0 m
Horiz. Pattern: Omni
Vert. Pattern: No
Prop Model: None

WHRK

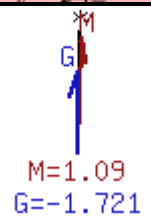
BLH5591
Latitude: 35-13-23 N
Longitude: 090-02-33 W
ERP: 100.00 kW
Channel: 246
Frequency: 97.1 MHz
AMSL Height: 238.0 m
Horiz. Pattern: Omni
Vert. Pattern: No
Prop Model: None

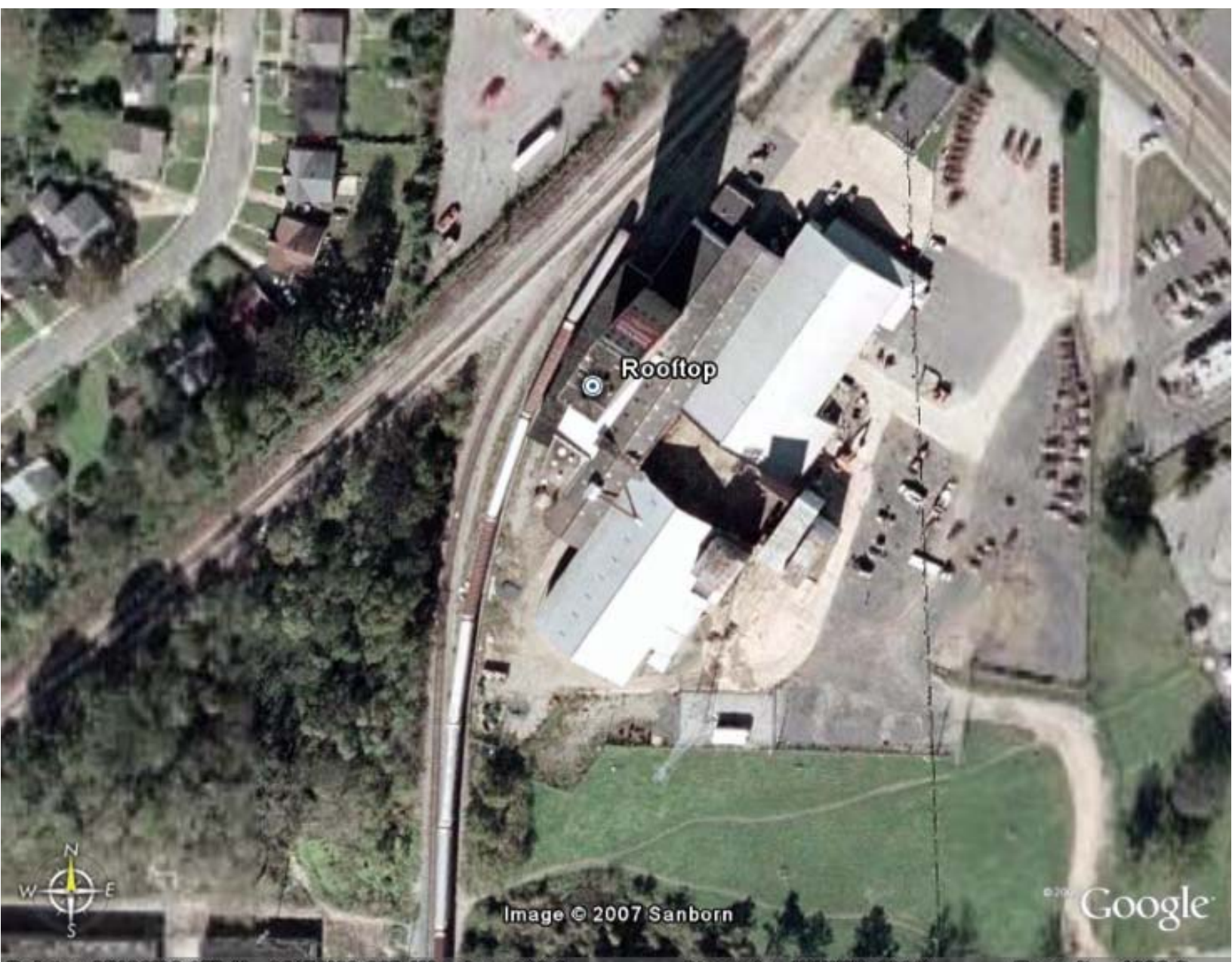
■ W244BY 1041306
■ WHRK





35° 06' 28"N, 89° 59' 22"W (NAD27)
USGS Southeast Memphis (TN) Quadrangle
 Projection is UTM Zone 16 NAD83 Datum







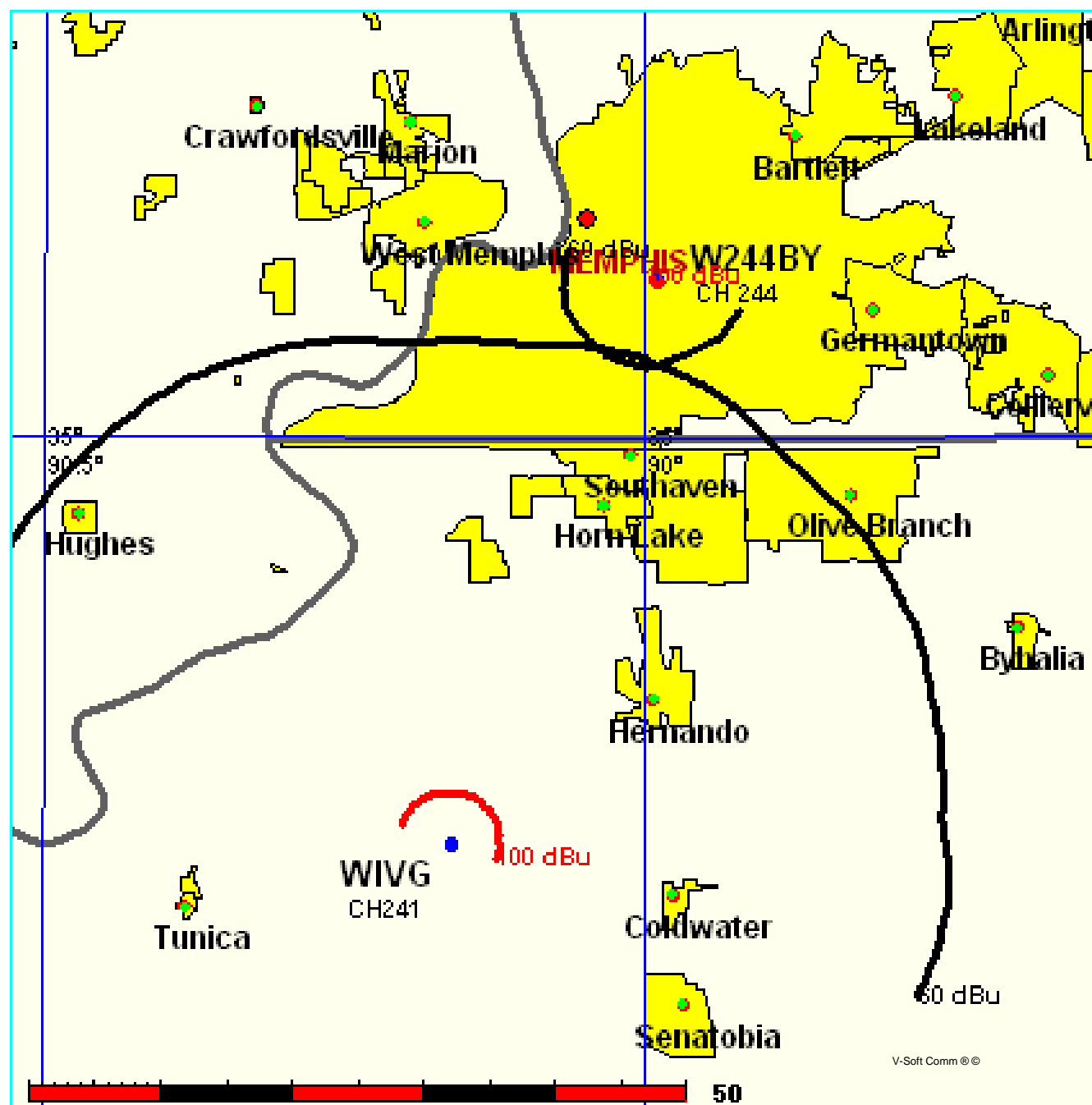


FMCommander Single Allocation Study
06-27-2007

W244BY CH 244 D
0.027 kW 162 M COR
Prot. = 60 dBu
Intef. = 100 dBu

WIVG CH 241 C3 BLH20060119ACX
9.5 kW, 227 M COR DA
Prot. = 60 dBu
Intef. = 100 dBu

Scale = 1:750,000



FMCommander Single Allocation Study
06-27-2007

W244BY CH 244 D
0.027 kW 162 M COR
Prot. = 60 dBu
Intef. = 100 dBu

WIVG-C CH 241 C3 BPH20060621AAK
4.1 kW, 312 M COR DA
Prot. = 60 dBu
Intef. = 100 dBu

Scale = 1:750,000

