



October 13, 2014

Mr. Michael S. Powell
 Tower Erection & Maintenance Inc.
 5585 County Road 68
 Spencerville, IN 46788

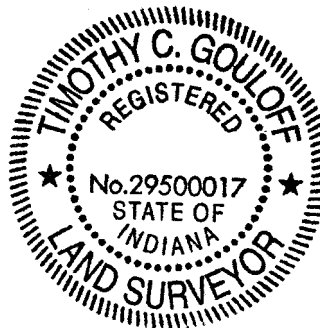
RE: Antenna orientation from True (geodetic) North
 FMECD/2-PLUS-DA, FREQ. 103.9
 WWFW, FORT WAYNE, IN

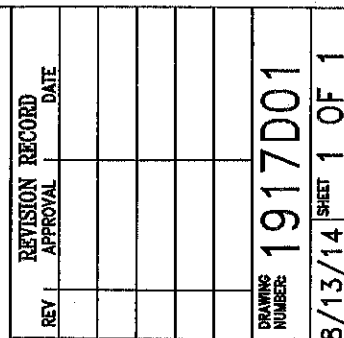
On October 5, 2014, a control line was established that was oriented to Geodetic (True) North from a control point set this survey to the Southeast leg of the existing above referenced tower utilizing Topcon Legacy (base) and Hiper (rover) GPS receivers in RTK mode.

Occupying said control point with a NIKON total station, the antennas at bays 1 and 2 were oriented to within +/- 1° of a geodetic azimuth of 120 degrees as stipulated on the attached drawing number 1917D01 dated 8/13/14 by Systems With Reliability, LP.

Sincerely,

Timothy C. Gouloff, LS





SCALE NTS	NAME:	RAC	DATE:	
	PARTS MADE BY THIS DRAWING			

SIZE	A
------	---


--	--	--

FREQ. 103.9
YNE, IN
TATION
ORTH

2-PLUS-DA,
FW, FORT WA
ANTENNA ORIENT
FROM TRUE N

TITLE:	FMECD/2
MATERIAL:	WW AN F

WITH RELIABILITY, LP
INDUSTRIAL PARK ROAD
PITTSBURGH, PENNSYLVANIA 15931



SYSTEMS
819 INDUSTRIAL
EBENSBURG, PA