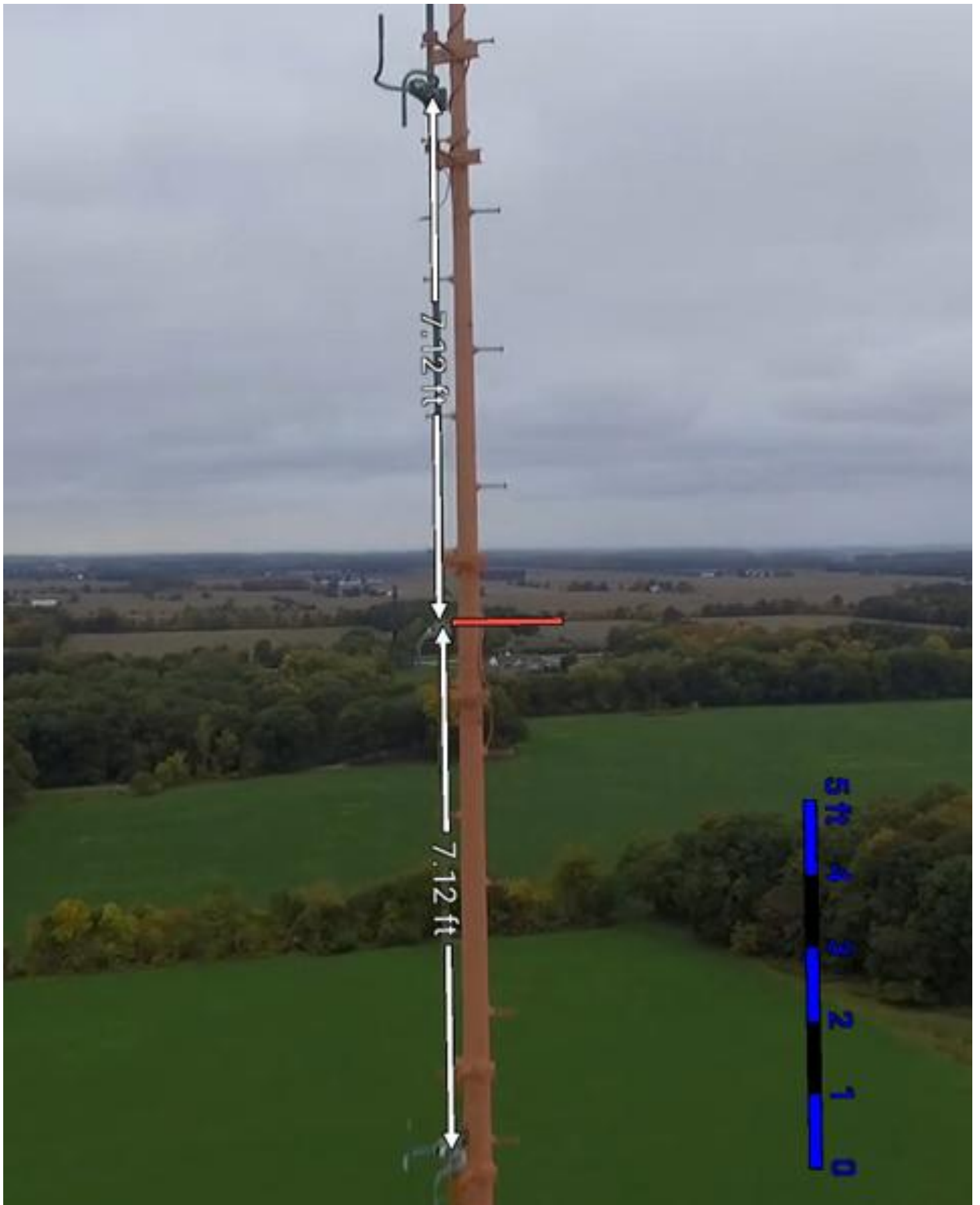


2/12/19 W276CZ, Saginaw, MI FAC# 140015 20190206ABG

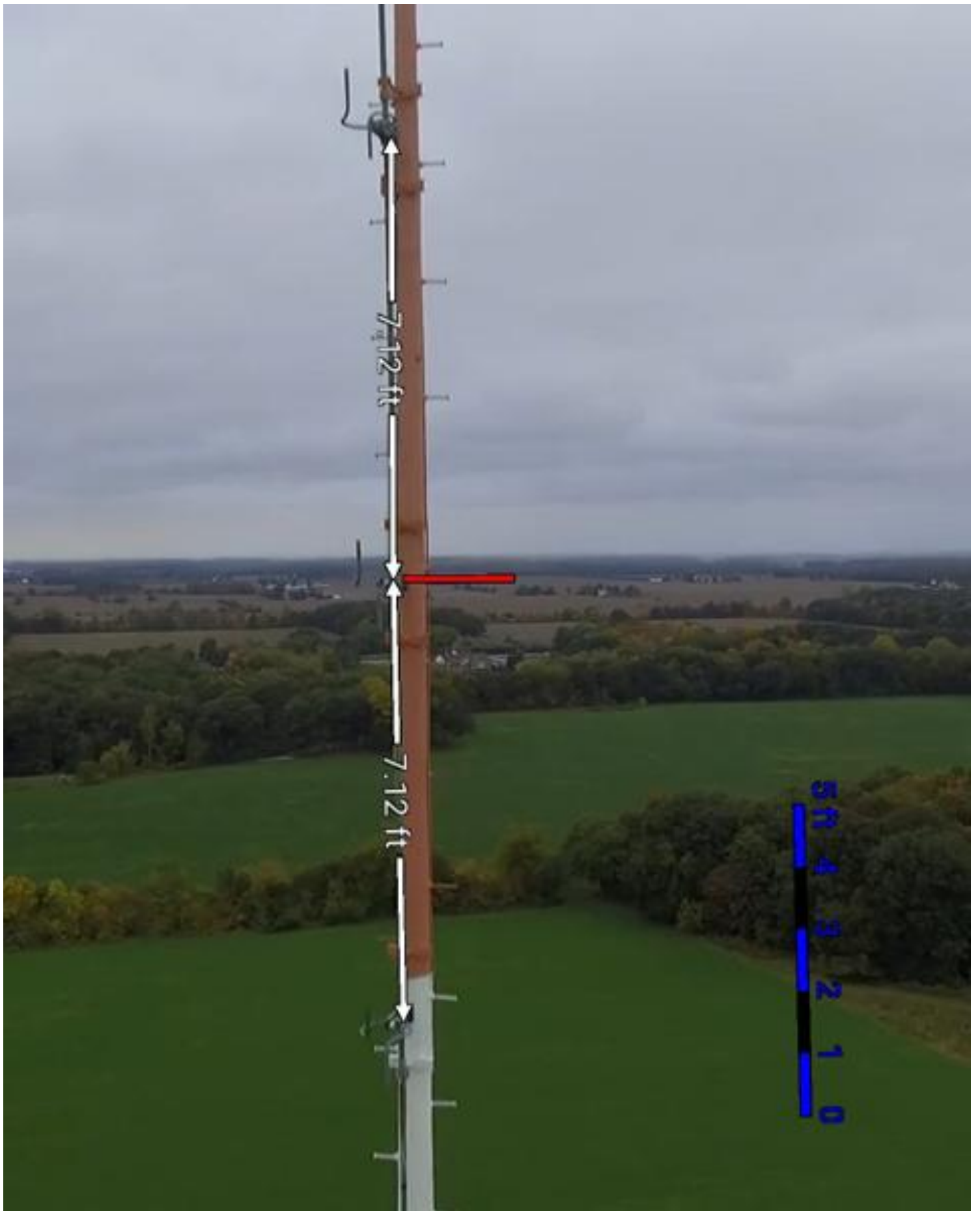
EXHIBIT:

Drone footage from 10-7-2018 of tower inspection. Perspective reference calibrated. Identifying all 6 bays are spaced 7.12ft

Tony Burkhead, 0026756510



BAYS 1, 2 & 3 TOP



BAYS 4,5 & 6 BOTTOM