

Interference contour study

Propagation methods:

service contour : FCC-FCC 50.0%
cochannel interference : FCC-FCC 10.0%

= 60.0 dBμV/m service contour
= 40.0 dBμV/m cochannel interference

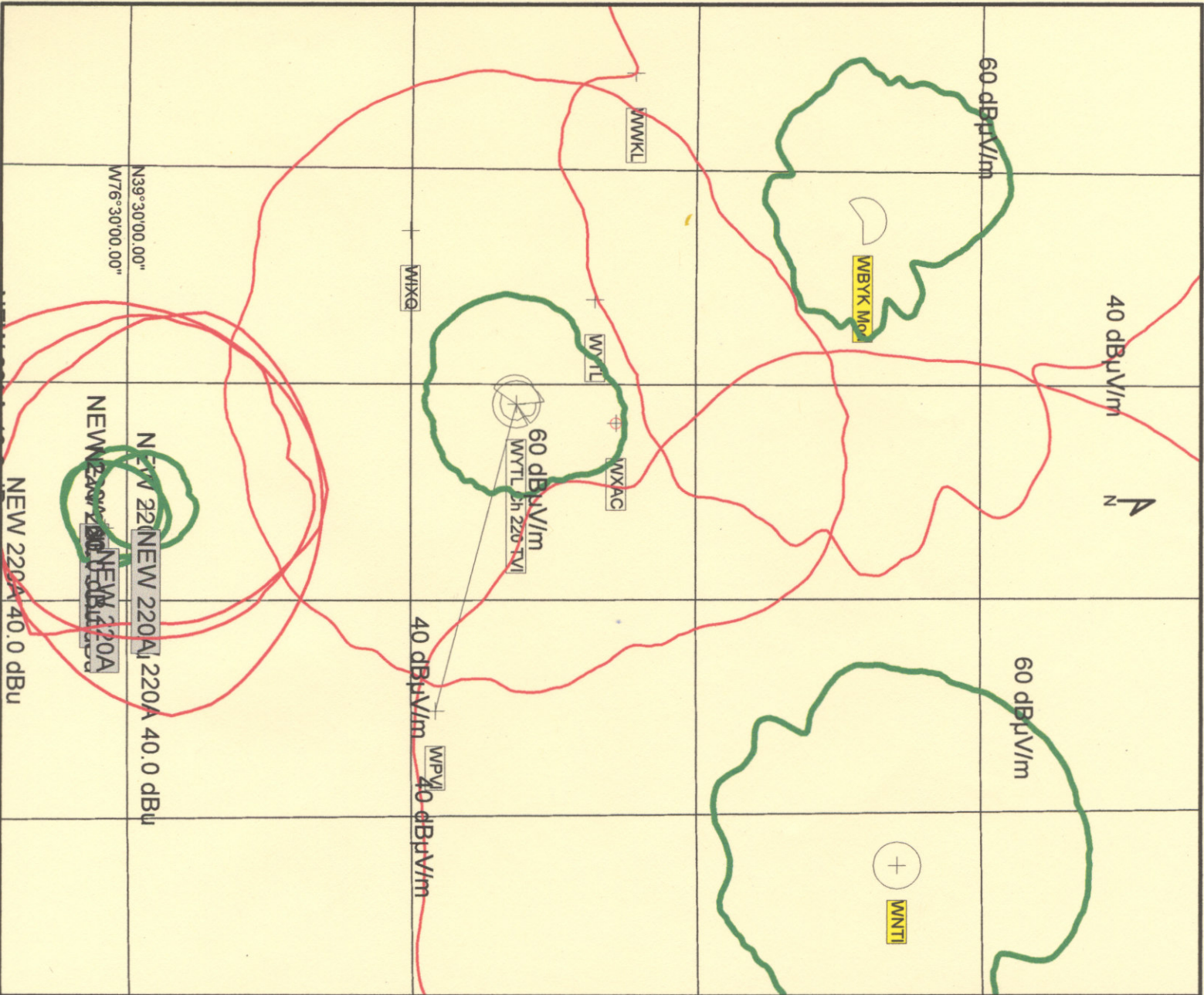
Study Grid Boundary

Reference Grid (spacing: 30')

KILOMETERS



WYTL Co-Ch Study



$z \rightarrow$

Interference contour study

: FCC-FCC 50.0%

10.0%

10.0%



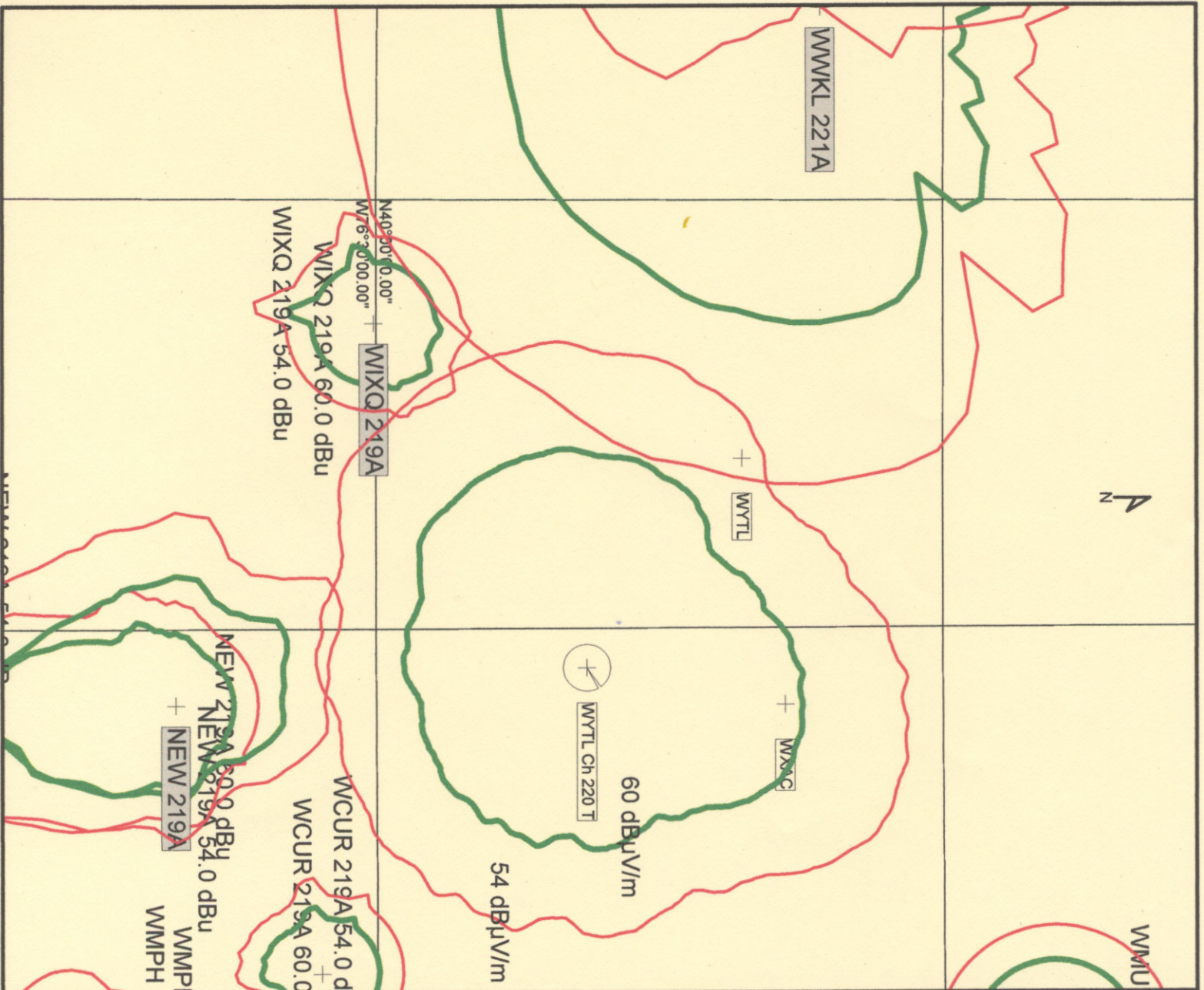
54.0 dB μ V/m 1st adjacent interference

Reference Grid (spacing: 30")

Reference Grid (spacing: 30")

-5 0 20

WYTL 1st Adjacent Study



Interference contour study

Propagation methods:

service contour	: FCC-FCC	50.0%
2nd adjacent interference	: FCC-EDX	10.0%
3rd adjacent interference	: FCC-EDX	10.0%

=	60.0 dBuV/m service contour
=	100.0 dBuV/m 2nd adjacent interference
=	100.0 dBuV/m 3rd adjacent interference

Study Grid Boundary

Reference Grid (spacing: 30')

KILOMETERS



WYTL 2nd & 3rd Adjacent Study

