

WMYX-FM Interference

The site for the proposed facility is located within the protected contour on a channel which is third-adjacent to WMYX-FM (the “Affected Station”). We predict the affected station protected contour at the proposed site, using more accurate NED-3 data, is 60.6 dBu F[50,50] as displayed in **Figure 1**. According to established third-adjacent channel contour Undesired-to-Desired (U/D) protection ratios, the contour from the interfering station should be 40 dB higher than the protected contour. Therefore the respective interfering contour for this proposed amendment is 100.6 dBu F[50,10].

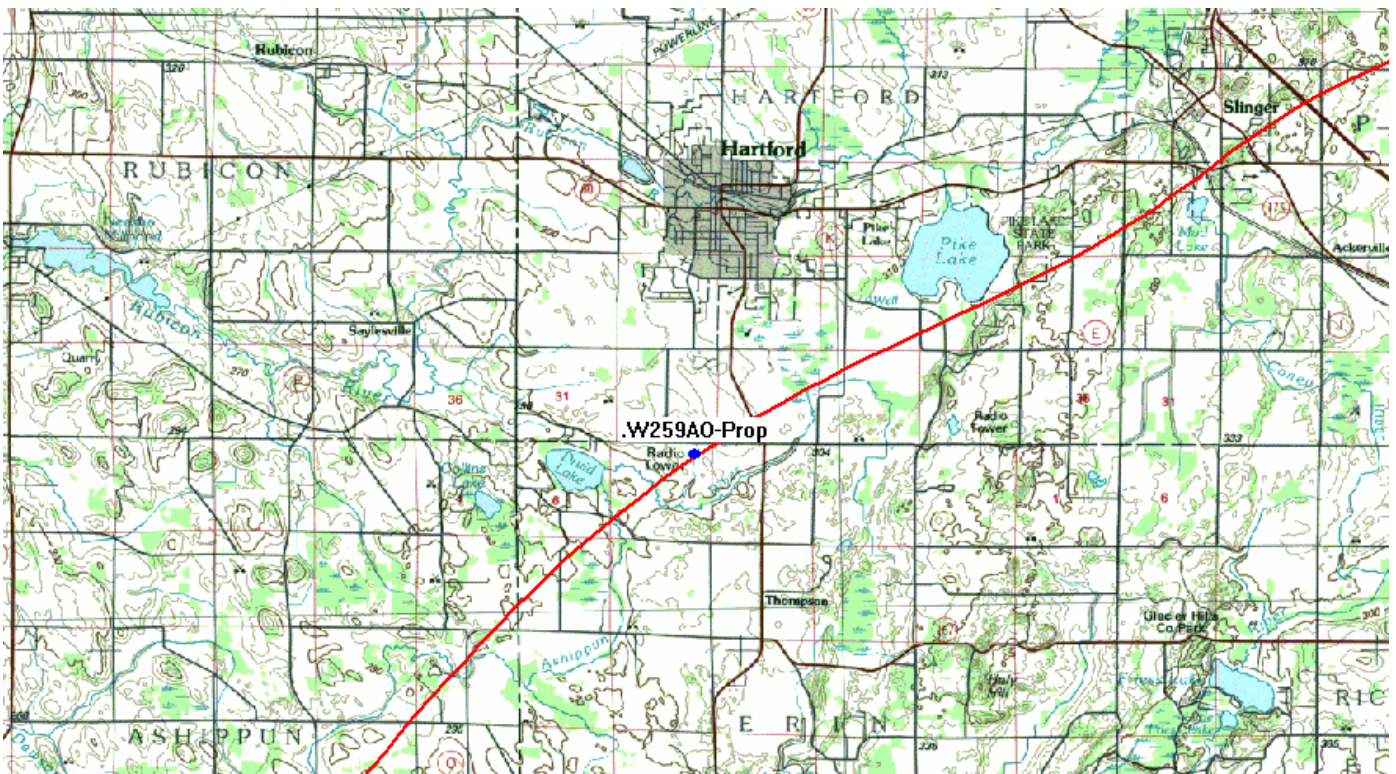


Figure 1

Protection to WMYX-FM from Interference

The proposed antenna has a radiation center 392 meters (1286 feet) AMSL transmitting 0.175 KW ERP. The predicted interfering contour at maximum radiation outward is 866 meters

(the Affected Area). The Affected Area is indicated by a blue dashed circle on a map based upon aerial photography in **Figure 2** to confirm proper location of the interference area and a USGS topographic map in **Figure 3** to show relative elevations.

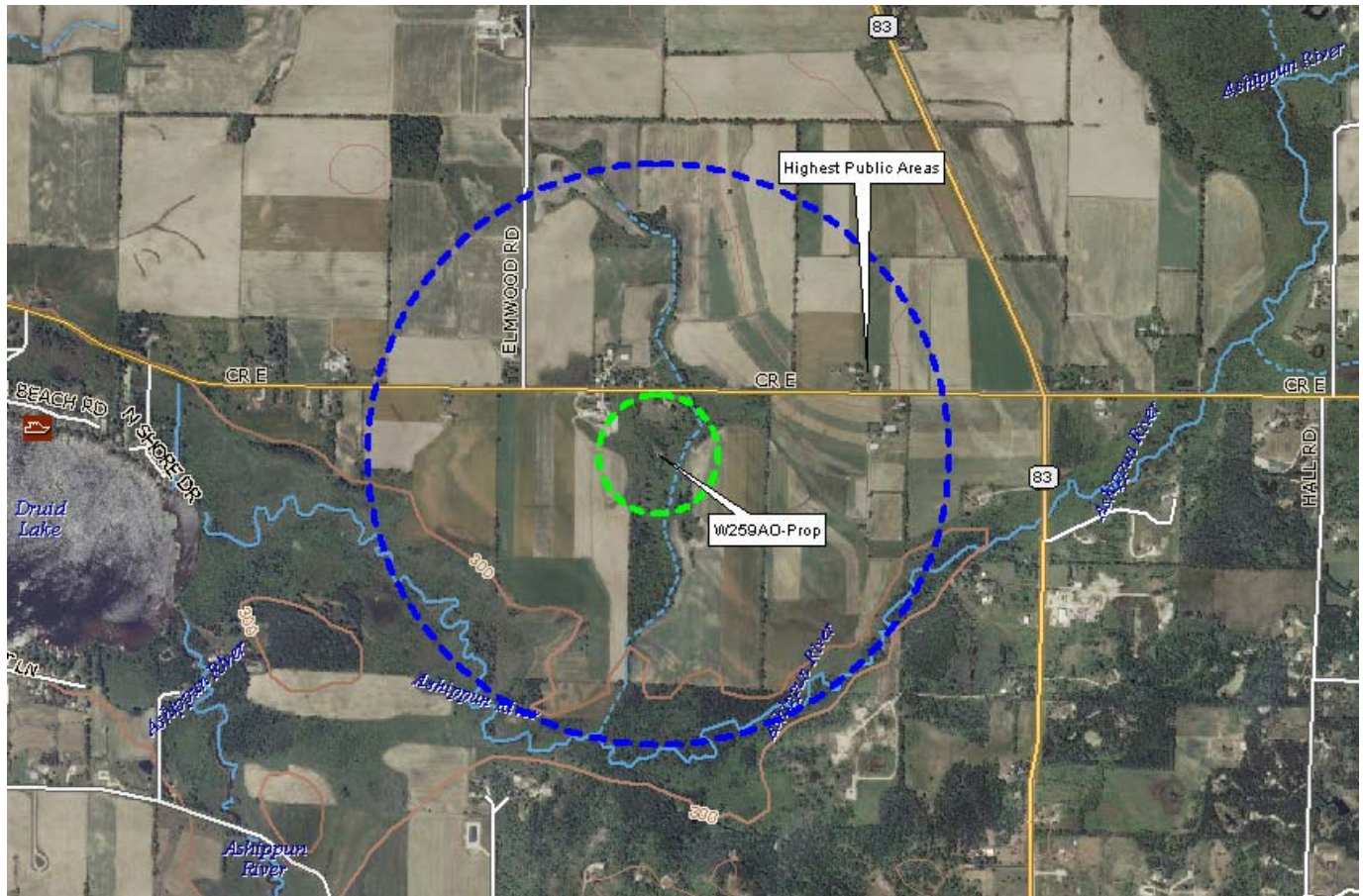


Figure 2

Applicant proposes to use a Bext antenna model TFC2K-6-75WS, which is a six-bay antenna with 75% vertical wavelength spacing. A graphical representation of radiation in the vertical plane is displayed in **Figure 4**

A table of elevation angles, field strength and Field dB as provided by the antenna manufacturer is displayed as **Table 1** at the end of this exhibit. It also contains columns with

the contour distance in meters which were calculated both in elevation radial form and for plotting in plane coordinates.

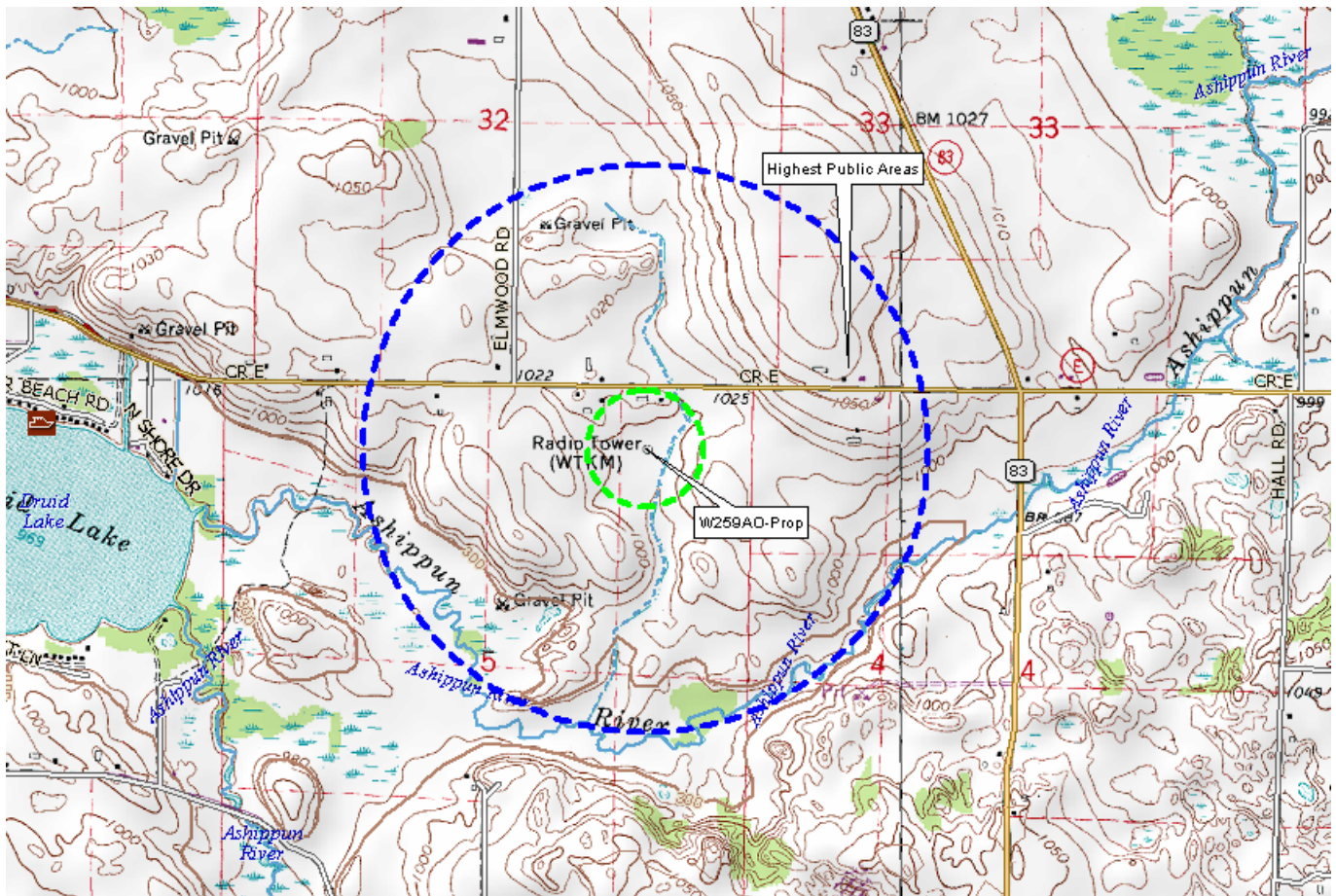
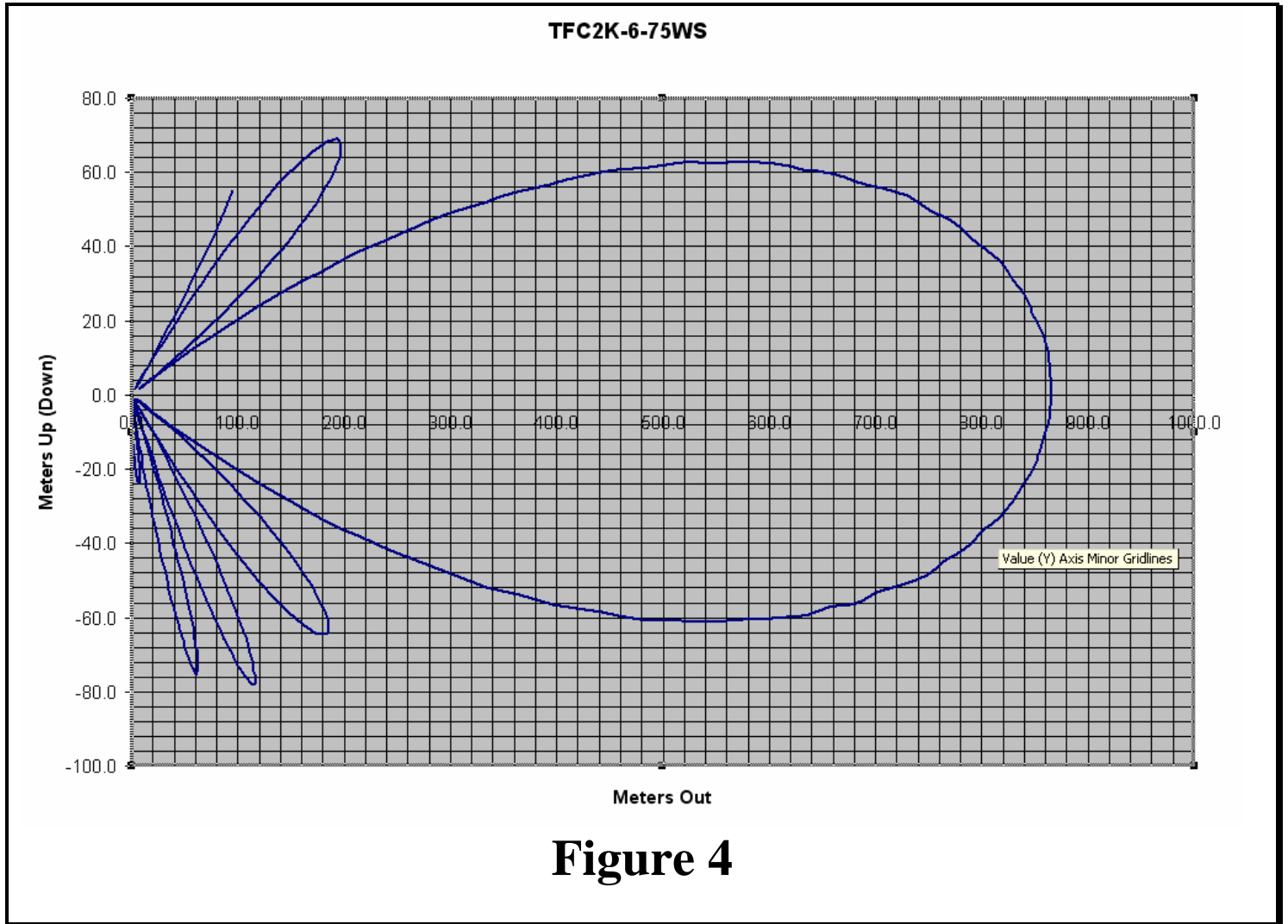


Figure 3

Figure 4 shows the minor lobes extending lower than the main lobe. Data in **Table 1** is highlighted for the minor lobes, on the -20.0, -34.3 and -50.9 vertical azimuths. The minor lobes do not exceed 177.4 meters from the tower, indicated by a green dashed circle (“Minor Lobe Perimeter”) in **Figure 2** and **Figure 3**, which does not extend into any public areas.

The lowest area of radiation outside of the Minor Lobe Perimeter is at the 6.4 degree declination angle, reaching 61.3 meter below Radiation Center (330.7m AMSL) at 546 meters radius (also highlighted in **Table 1**). The highest public area, so labeled in Figure 2 and Figure

3, includes two residences with garages and a storage building. The tallest such structure is a two-story residence (See house on left side of **Figure 5**). No structures in the Affected Area exceed 328 meters AMSL, which is below the lowest radiation of the main lobe.



Request for Waiver

Since this proposal complies with 47CFR74.1204(d) based upon the fact that no actual interference will occur due to no population and no public locations within the Affected Area,

we hereby request waiver of 47CFR74.1204(a)(3) for separation between this proposed facility and the Affected Station.



Figure 5

Table 1

TFC2K675.DAT

| ELEV ANGLE | FIELD STRENGTH | FIELD DB | ELEV ERP(KW) | ELEV DBK | 100.60DBU CNTR(M) | DISTANCE OUT(M) | DISTANCE UP(DOWN) | ELEVATION AMSL(M) |
|---------------|-------------------|-------------|-----------------|-------------|----------------------|--------------------|----------------------|----------------------|
| 30.0 | 0.127 | -17.92 | 0.0028 | -25.49 | 110.0 | 95.2 | 55.0 | 447.0 |
| 29.7 | 0.117 | -18.64 | 0.0024 | -26.21 | 101.3 | 88.0 | 50.2 | 442.2 |
| 29.3 | 0.107 | -19.41 | 0.002 | -26.98 | 92.6 | 80.8 | 45.3 | 437.3 |
| 29.0 | 0.096 | -20.35 | 0.0016 | -27.92 | 83.1 | 72.7 | 40.3 | 432.3 |
| 28.6 | 0.084 | -21.51 | 0.0012 | -29.08 | 72.7 | 63.9 | 34.8 | 426.8 |
| 28.3 | 0.072 | -22.85 | 0.0009 | -30.42 | 62.3 | 54.9 | 29.6 | 421.6 |
| 28.0 | 0.059 | -24.58 | 0.0006 | -32.15 | 51.1 | 45.1 | 24.0 | 416.0 |
| 27.6 | 0.046 | -26.74 | 0.0004 | -34.31 | 39.8 | 35.3 | 18.5 | 410.5 |
| 27.3 | 0.032 | -29.90 | 0.0002 | -37.47 | 27.7 | 24.6 | 12.7 | 404.7 |
| 26.9 | 0.018 | -34.89 | 0.0001 | -42.46 | 15.6 | 13.9 | 7.1 | 399.1 |
| 26.6 | 0.004 | -47.96 | 0 | -55.53 | 3.5 | 3.1 | 1.6 | 393.6 |
| 26.3 | 0.011 | -39.17 | 0 | -46.74 | 9.5 | 8.5 | 4.2 | 396.2 |
| 25.9 | 0.026 | -31.70 | 0.0001 | -39.27 | 22.5 | 20.2 | 9.8 | 401.8 |

FCC Form 349
Exhibit No. 13B
Waiver Request 47CFR74.1204

| | | | | | | | | |
|------|-------|--------|--------|--------|-------|-------|------|-------|
| 25.6 | 0.041 | -27.74 | 0.0003 | -35.31 | 35.5 | 32.0 | 15.3 | 407.3 |
| 25.2 | 0.056 | -25.04 | 0.0005 | -32.61 | 48.5 | 43.9 | 20.6 | 412.6 |
| 24.9 | 0.071 | -22.97 | 0.0009 | -30.54 | 61.5 | 55.8 | 25.9 | 417.9 |
| 24.6 | 0.085 | -21.41 | 0.0013 | -28.98 | 73.6 | 66.9 | 30.6 | 422.6 |
| 24.2 | 0.100 | -20.00 | 0.0017 | -27.57 | 86.6 | 79.0 | 35.5 | 427.5 |
| 23.9 | 0.114 | -18.86 | 0.0023 | -26.43 | 98.7 | 90.2 | 40.0 | 432.0 |
| 23.5 | 0.128 | -17.86 | 0.0029 | -25.43 | 110.8 | 101.6 | 44.2 | 436.2 |
| 23.2 | 0.142 | -16.95 | 0.0035 | -24.52 | 122.9 | 113.0 | 48.4 | 440.4 |
| 22.9 | 0.155 | -16.19 | 0.0042 | -23.76 | 134.2 | 123.6 | 52.2 | 444.2 |
| 22.5 | 0.167 | -15.55 | 0.0049 | -23.12 | 144.6 | 133.6 | 55.3 | 447.3 |
| 22.2 | 0.179 | -14.94 | 0.0056 | -22.51 | 155.0 | 143.5 | 58.6 | 450.6 |
| 21.8 | 0.190 | -14.42 | 0.0063 | -21.99 | 164.5 | 152.7 | 61.1 | 453.1 |
| 21.5 | 0.200 | -13.98 | 0.007 | -21.55 | 173.2 | 161.1 | 63.5 | 455.5 |
| 21.2 | 0.209 | -13.60 | 0.0076 | -21.17 | 180.9 | 168.7 | 65.4 | 457.4 |
| 20.8 | 0.217 | -13.27 | 0.0082 | -20.84 | 187.9 | 175.6 | 66.7 | 458.7 |
| 20.5 | 0.224 | -13.00 | 0.0088 | -20.56 | 193.9 | 181.7 | 67.9 | 459.9 |
| 20.1 | 0.230 | -12.77 | 0.0093 | -20.34 | 199.1 | 187.0 | 68.4 | 460.4 |
| 19.8 | 0.235 | -12.58 | 0.0097 | -20.15 | 203.5 | 191.4 | 68.9 | 460.9 |
| 19.5 | 0.238 | -12.47 | 0.0099 | -20.04 | 206.1 | 194.2 | 68.8 | 460.8 |
| 19.1 | 0.240 | -12.40 | 0.0101 | -19.97 | 207.8 | 196.3 | 68.0 | 460.0 |
| 18.8 | 0.241 | -12.36 | 0.0102 | -19.93 | 208.7 | 197.5 | 67.2 | 459.2 |
| 18.4 | 0.240 | -12.40 | 0.0101 | -19.97 | 207.8 | 197.2 | 65.6 | 457.6 |
| 18.1 | 0.238 | -12.47 | 0.0099 | -20.04 | 206.1 | 195.9 | 64.0 | 456.0 |
| 17.8 | 0.234 | -12.62 | 0.0096 | -20.19 | 202.6 | 192.9 | 61.9 | 453.9 |
| 17.4 | 0.228 | -12.84 | 0.0091 | -20.41 | 197.4 | 188.4 | 59.0 | 451.0 |
| 17.1 | 0.221 | -13.11 | 0.0085 | -20.68 | 191.3 | 182.9 | 56.3 | 448.3 |
| 16.7 | 0.212 | -13.47 | 0.0079 | -21.04 | 183.5 | 175.8 | 52.7 | 444.7 |
| 16.4 | 0.202 | -13.89 | 0.0071 | -21.46 | 174.9 | 167.8 | 49.4 | 441.4 |
| 16.1 | 0.190 | -14.42 | 0.0063 | -21.99 | 164.5 | 158.0 | 45.6 | 437.6 |
| 15.7 | 0.176 | -15.09 | 0.0054 | -22.66 | 152.4 | 146.7 | 41.2 | 433.2 |
| 15.4 | 0.161 | -15.86 | 0.0045 | -23.43 | 139.4 | 134.4 | 37.0 | 429.0 |
| 15.0 | 0.144 | -16.83 | 0.0036 | -24.4 | 124.7 | 120.4 | 32.3 | 424.3 |
| 14.7 | 0.125 | -18.06 | 0.0027 | -25.63 | 108.2 | 104.7 | 27.5 | 419.5 |
| 14.4 | 0.105 | -19.58 | 0.0019 | -27.15 | 90.9 | 88.0 | 22.6 | 414.6 |
| 14.0 | 0.083 | -21.62 | 0.0012 | -29.19 | 71.9 | 69.7 | 17.4 | 409.4 |
| 13.7 | 0.059 | -24.58 | 0.0006 | -32.15 | 51.1 | 49.6 | 12.1 | 404.1 |
| 13.3 | 0.034 | -29.37 | 0.0002 | -36.94 | 29.4 | 28.6 | 6.8 | 398.8 |
| 13.0 | 0.008 | -41.94 | 0 | -49.51 | 6.9 | 6.7 | 1.6 | 393.6 |
| 12.7 | 0.020 | -33.98 | 0.0001 | -41.55 | 17.3 | 16.9 | 3.8 | 395.8 |
| 12.3 | 0.048 | -26.38 | 0.0004 | -33.94 | 41.6 | 40.6 | 8.9 | 400.9 |
| 12.0 | 0.079 | -22.05 | 0.0011 | -29.62 | 68.4 | 66.9 | 14.2 | 406.2 |
| 11.6 | 0.110 | -19.17 | 0.0021 | -26.74 | 95.2 | 93.3 | 19.1 | 411.1 |
| 11.3 | 0.142 | -16.95 | 0.0035 | -24.52 | 122.9 | 120.6 | 24.1 | 416.1 |
| 11.0 | 0.175 | -15.14 | 0.0054 | -22.71 | 151.5 | 148.7 | 28.9 | 420.9 |
| 10.6 | 0.209 | -13.60 | 0.0076 | -21.17 | 180.9 | 177.9 | 33.3 | 425.3 |
| 10.3 | 0.244 | -12.25 | 0.0104 | -19.82 | 211.2 | 207.8 | 37.8 | 429.8 |
| 9.9 | 0.279 | -11.09 | 0.0136 | -18.66 | 241.5 | 238.0 | 41.5 | 433.5 |
| 9.6 | 0.315 | -10.03 | 0.0174 | -17.6 | 272.7 | 268.9 | 45.5 | 437.5 |
| 9.3 | 0.351 | -9.09 | 0.0216 | -16.66 | 303.9 | 299.9 | 49.1 | 441.1 |
| 8.9 | 0.387 | -8.25 | 0.0262 | -15.82 | 335.1 | 331.0 | 51.8 | 443.8 |
| 8.6 | 0.424 | -7.45 | 0.0315 | -15.02 | 367.1 | 363.0 | 54.9 | 446.9 |

FCC Form 349
Exhibit No. 13B
Waiver Request 47CFR74.1204

| | | | | | | | | |
|------|-------|-------|--------|--------|-------|-------|-------|-------|
| 8.2 | 0.460 | -6.74 | 0.037 | -14.31 | 398.3 | 394.2 | 56.8 | 448.8 |
| 7.9 | 0.496 | -6.09 | 0.0431 | -13.66 | 429.4 | 425.3 | 59.0 | 451.0 |
| 7.6 | 0.532 | -5.48 | 0.0495 | -13.05 | 460.6 | 456.5 | 60.9 | 452.9 |
| 7.2 | 0.567 | -4.93 | 0.0563 | -12.5 | 490.9 | 487.0 | 61.5 | 453.5 |
| 6.9 | 0.602 | -4.41 | 0.0634 | -11.98 | 521.2 | 517.4 | 62.6 | 454.6 |
| 6.5 | 0.636 | -3.93 | 0.0708 | -11.5 | 550.6 | 547.1 | 62.3 | 454.3 |
| 6.2 | 0.669 | -3.49 | 0.0783 | -11.06 | 579.2 | 575.8 | 62.6 | 454.6 |
| 5.9 | 0.702 | -3.07 | 0.0862 | -10.64 | 607.8 | 604.6 | 62.5 | 454.5 |
| 5.5 | 0.733 | -2.70 | 0.094 | -10.27 | 634.6 | 631.7 | 60.8 | 452.8 |
| 5.2 | 0.763 | -2.35 | 0.1019 | -9.92 | 660.6 | 657.9 | 59.9 | 451.9 |
| 4.8 | 0.791 | -2.04 | 0.1095 | -9.61 | 684.8 | 682.4 | 57.3 | 449.3 |
| 4.5 | 0.819 | -1.73 | 0.1174 | -9.3 | 709.1 | 706.9 | 55.6 | 447.6 |
| 4.2 | 0.845 | -1.46 | 0.125 | -9.03 | 731.6 | 729.6 | 53.6 | 445.6 |
| 3.8 | 0.869 | -1.22 | 0.1322 | -8.79 | 752.4 | 750.7 | 49.9 | 441.9 |
| 3.5 | 0.891 | -1.00 | 0.1389 | -8.57 | 771.4 | 770.0 | 47.1 | 439.1 |
| 3.1 | 0.912 | -0.80 | 0.1456 | -8.37 | 789.6 | 788.4 | 42.7 | 434.7 |
| 2.8 | 0.930 | -0.63 | 0.1514 | -8.2 | 805.2 | 804.2 | 39.3 | 431.3 |
| 2.5 | 0.946 | -0.48 | 0.1566 | -8.05 | 819.0 | 818.2 | 35.7 | 427.7 |
| 2.1 | 0.960 | -0.35 | 0.1613 | -7.92 | 831.1 | 830.6 | 30.5 | 422.5 |
| 1.8 | 0.972 | -0.25 | 0.1653 | -7.82 | 841.5 | 841.1 | 26.4 | 418.4 |
| 1.4 | 0.982 | -0.16 | 0.1688 | -7.73 | 850.2 | 849.9 | 20.8 | 412.8 |
| 1.1 | 0.990 | -0.09 | 0.1715 | -7.66 | 857.1 | 857.0 | 16.5 | 408.5 |
| 0.8 | 0.996 | -0.03 | 0.1736 | -7.6 | 862.3 | 862.2 | 12.0 | 404.0 |
| 0.4 | 0.999 | -0.01 | 0.1747 | -7.58 | 864.9 | 864.9 | 6.0 | 398.0 |
| 0.1 | 1.000 | 0.00 | 0.175 | -7.57 | 865.8 | 865.8 | 1.5 | 393.5 |
| -0.3 | 0.999 | -0.01 | 0.1747 | -7.58 | 864.9 | 864.9 | -4.5 | 387.5 |
| -0.6 | 0.995 | -0.04 | 0.1733 | -7.61 | 861.4 | 861.4 | -9.0 | 383.0 |
| -0.9 | 0.989 | -0.10 | 0.1712 | -7.67 | 856.2 | 856.1 | -13.4 | 378.6 |
| -1.3 | 0.981 | -0.17 | 0.1684 | -7.74 | 849.3 | 849.1 | -19.3 | 372.7 |
| -1.6 | 0.971 | -0.26 | 0.165 | -7.83 | 840.7 | 840.3 | -23.5 | 368.5 |
| -2.0 | 0.958 | -0.37 | 0.1606 | -7.94 | 829.4 | 828.9 | -28.9 | 363.1 |
| -2.3 | 0.944 | -0.50 | 0.1559 | -8.07 | 817.3 | 816.6 | -32.8 | 359.2 |
| -2.6 | 0.927 | -0.66 | 0.1504 | -8.23 | 802.6 | 801.7 | -36.4 | 355.6 |
| -3.0 | 0.908 | -0.84 | 0.1443 | -8.41 | 786.1 | 785.0 | -41.1 | 350.9 |
| -3.3 | 0.888 | -1.03 | 0.138 | -8.6 | 768.8 | 767.5 | -44.3 | 347.7 |
| -3.7 | 0.866 | -1.25 | 0.1312 | -8.82 | 749.8 | 748.2 | -48.4 | 343.6 |
| -4.0 | 0.842 | -1.49 | 0.1241 | -9.06 | 729.0 | 727.2 | -50.9 | 341.1 |
| -4.3 | 0.816 | -1.77 | 0.1165 | -9.34 | 706.5 | 704.5 | -53.0 | 339.0 |
| -4.7 | 0.789 | -2.06 | 0.1089 | -9.63 | 683.1 | 680.8 | -56.0 | 336.0 |
| -5.0 | 0.760 | -2.38 | 0.1011 | -9.95 | 658.0 | 655.5 | -57.3 | 334.7 |
| -5.4 | 0.731 | -2.72 | 0.0935 | -10.29 | 632.9 | 630.1 | -59.6 | 332.4 |
| -5.7 | 0.700 | -3.10 | 0.0857 | -10.67 | 606.0 | 603.0 | -60.2 | 331.8 |
| -6.0 | 0.668 | -3.50 | 0.0781 | -11.07 | 578.3 | 575.2 | -60.5 | 331.5 |
| -6.4 | 0.635 | -3.94 | 0.0706 | -11.51 | 549.8 | 546.3 | -61.3 | 330.7 |
| -6.7 | 0.602 | -4.41 | 0.0634 | -11.98 | 521.2 | 517.6 | -60.8 | 331.2 |
| -7.1 | 0.567 | -4.93 | 0.0563 | -12.5 | 490.9 | 487.1 | -60.7 | 331.3 |
| -7.4 | 0.533 | -5.47 | 0.0497 | -13.04 | 461.5 | 457.6 | -59.4 | 332.6 |
| -7.7 | 0.497 | -6.07 | 0.0432 | -13.64 | 430.3 | 426.4 | -57.7 | 334.3 |
| -8.1 | 0.462 | -6.71 | 0.0374 | -14.28 | 400.0 | 396.0 | -56.4 | 335.6 |
| -8.4 | 0.426 | -7.41 | 0.0318 | -14.98 | 368.8 | 364.9 | -53.9 | 338.1 |
| -8.8 | 0.390 | -8.18 | 0.0266 | -15.75 | 337.7 | 333.7 | -51.7 | 340.3 |

FCC Form 349
Exhibit No. 13B
Waiver Request 47CFR74.1204

| | | | | | | | | |
|-------|-------|--------|--------|--------|-------|-------|-------|-------|
| -9.1 | 0.355 | -9.00 | 0.0221 | -16.57 | 307.3 | 303.5 | -48.6 | 343.4 |
| -9.4 | 0.320 | -9.90 | 0.0179 | -17.47 | 277.0 | 273.3 | -45.2 | 346.8 |
| -9.8 | 0.285 | -10.90 | 0.0142 | -18.47 | 246.7 | 243.1 | -42.0 | 350.0 |
| -10.1 | 0.250 | -12.04 | 0.0109 | -19.61 | 216.4 | 213.1 | -38.0 | 354.0 |
| -10.5 | 0.217 | -13.27 | 0.0082 | -20.84 | 187.9 | 184.7 | -34.2 | 357.8 |
| -10.8 | 0.183 | -14.75 | 0.0059 | -22.32 | 158.4 | 155.6 | -29.7 | 362.3 |
| -11.1 | 0.151 | -16.42 | 0.004 | -23.99 | 130.7 | 128.3 | -25.2 | 366.8 |
| -11.5 | 0.120 | -18.42 | 0.0025 | -25.99 | 103.9 | 101.8 | -20.7 | 371.3 |
| -11.8 | 0.089 | -21.01 | 0.0014 | -28.58 | 77.1 | 75.4 | -15.8 | 376.2 |
| -12.2 | 0.060 | -24.44 | 0.0006 | -32.01 | 51.9 | 50.8 | -11.0 | 381.0 |
| -12.5 | 0.032 | -29.90 | 0.0002 | -37.47 | 27.7 | 27.0 | -6.0 | 386.0 |
| -12.8 | 0.005 | -46.02 | 0 | -53.59 | 4.3 | 4.2 | -1.0 | 391.0 |
| -13.2 | 0.021 | -33.56 | 0.0001 | -41.13 | 18.2 | 17.7 | -4.2 | 387.8 |
| -13.5 | 0.045 | -26.94 | 0.0004 | -34.51 | 39.0 | 37.9 | -9.1 | 382.9 |
| -13.9 | 0.068 | -23.35 | 0.0008 | -30.92 | 58.9 | 57.1 | -14.1 | 377.9 |
| -14.2 | 0.090 | -20.92 | 0.0014 | -28.48 | 77.9 | 75.5 | -19.1 | 372.9 |
| -14.5 | 0.110 | -19.17 | 0.0021 | -26.74 | 95.2 | 92.2 | -23.8 | 368.2 |
| -14.9 | 0.128 | -17.86 | 0.0029 | -25.43 | 110.8 | 107.1 | -28.5 | 363.5 |
| -15.2 | 0.145 | -16.77 | 0.0037 | -24.34 | 125.5 | 121.1 | -32.9 | 359.1 |
| -15.6 | 0.160 | -15.92 | 0.0045 | -23.49 | 138.5 | 133.4 | -37.3 | 354.7 |
| -15.9 | 0.174 | -15.19 | 0.0053 | -22.76 | 150.6 | 144.9 | -41.3 | 350.7 |
| -16.2 | 0.186 | -14.61 | 0.0061 | -22.18 | 161.0 | 154.6 | -44.9 | 347.1 |
| -16.6 | 0.196 | -14.15 | 0.0067 | -21.72 | 169.7 | 162.6 | -48.5 | 343.5 |
| -16.9 | 0.205 | -13.76 | 0.0074 | -21.33 | 177.5 | 169.8 | -51.6 | 340.4 |
| -17.3 | 0.212 | -13.47 | 0.0079 | -21.04 | 183.5 | 175.2 | -54.6 | 337.4 |
| -17.6 | 0.218 | -13.23 | 0.0083 | -20.8 | 188.7 | 179.9 | -57.1 | 334.9 |
| -17.9 | 0.222 | -13.07 | 0.0086 | -20.64 | 192.2 | 182.9 | -59.1 | 332.9 |
| -18.3 | 0.225 | -12.96 | 0.0089 | -20.53 | 194.8 | 184.9 | -61.2 | 330.8 |
| -18.6 | 0.226 | -12.92 | 0.0089 | -20.49 | 195.7 | 185.4 | -62.4 | 329.6 |
| -19.0 | 0.226 | -12.92 | 0.0089 | -20.49 | 195.7 | 185.0 | -63.7 | 328.3 |
| -19.3 | 0.225 | -12.96 | 0.0089 | -20.53 | 194.8 | 183.9 | -64.4 | 327.6 |
| -19.6 | 0.222 | -13.07 | 0.0086 | -20.64 | 192.2 | 181.1 | -64.5 | 327.5 |
| -20.0 | 0.218 | -13.23 | 0.0083 | -20.8 | 188.7 | 177.4 | -64.6 | 327.4 |
| -20.3 | 0.213 | -13.43 | 0.0079 | -21 | 184.4 | 173.0 | -64.0 | 328.0 |
| -20.7 | 0.207 | -13.68 | 0.0075 | -21.25 | 179.2 | 167.6 | -63.3 | 328.7 |
| -21.0 | 0.199 | -14.02 | 0.0069 | -21.59 | 172.3 | 160.8 | -61.7 | 330.3 |
| -21.3 | 0.191 | -14.38 | 0.0064 | -21.95 | 165.4 | 154.1 | -60.1 | 331.9 |
| -21.7 | 0.182 | -14.80 | 0.0058 | -22.37 | 157.6 | 146.4 | -58.3 | 333.7 |
| -22.0 | 0.172 | -15.29 | 0.0052 | -22.86 | 148.9 | 138.1 | -55.8 | 336.2 |
| -22.4 | 0.162 | -15.81 | 0.0046 | -23.38 | 140.3 | 129.7 | -53.4 | 338.6 |
| -22.7 | 0.150 | -16.48 | 0.0039 | -24.05 | 129.9 | 119.8 | -50.1 | 341.9 |
| -23.0 | 0.138 | -17.20 | 0.0033 | -24.77 | 119.5 | 110.0 | -46.7 | 345.3 |
| -23.4 | 0.126 | -17.99 | 0.0028 | -25.56 | 109.1 | 100.1 | -43.3 | 348.7 |
| -23.7 | 0.113 | -18.94 | 0.0022 | -26.51 | 97.8 | 89.6 | -39.3 | 352.7 |
| -24.1 | 0.100 | -20.00 | 0.0017 | -27.57 | 86.6 | 79.0 | -35.4 | 356.6 |
| -24.4 | 0.086 | -21.31 | 0.0013 | -28.88 | 74.5 | 67.8 | -30.8 | 361.2 |
| -24.7 | 0.072 | -22.85 | 0.0009 | -30.42 | 62.3 | 56.6 | -26.0 | 366.0 |
| -25.1 | 0.058 | -24.73 | 0.0006 | -32.3 | 50.2 | 45.5 | -21.3 | 370.7 |
| -25.4 | 0.045 | -26.94 | 0.0004 | -34.51 | 39.0 | 35.2 | -16.7 | 375.3 |
| -25.8 | 0.031 | -30.17 | 0.0002 | -37.74 | 26.8 | 24.2 | -11.7 | 380.3 |
| -26.1 | 0.017 | -35.39 | 0.0001 | -42.96 | 14.7 | 13.2 | -6.5 | 385.5 |

FCC Form 349
Exhibit No. 13B
Waiver Request 47CFR74.1204

| | | | | | | | | |
|-------|-------|--------|--------|--------|-------|-------|-------|-------|
| -26.4 | 0.003 | -50.46 | 0 | -58.03 | 2.6 | 2.3 | -1.2 | 390.8 |
| -26.8 | 0.010 | -40.00 | 0 | -47.57 | 8.7 | 7.7 | -3.9 | 388.1 |
| -27.1 | 0.024 | -32.40 | 0.0001 | -39.97 | 20.8 | 18.5 | -9.5 | 382.5 |
| -27.5 | 0.037 | -28.64 | 0.0002 | -36.21 | 32.0 | 28.4 | -14.8 | 377.2 |
| -27.8 | 0.049 | -26.20 | 0.0004 | -33.77 | 42.4 | 37.5 | -19.8 | 372.2 |
| -28.1 | 0.061 | -24.29 | 0.0007 | -31.86 | 52.8 | 46.6 | -24.9 | 367.1 |
| -28.5 | 0.073 | -22.73 | 0.0009 | -30.3 | 63.2 | 55.5 | -30.2 | 361.8 |
| -28.8 | 0.084 | -21.51 | 0.0012 | -29.08 | 72.7 | 63.7 | -35.0 | 357.0 |
| -29.2 | 0.094 | -20.54 | 0.0015 | -28.11 | 81.4 | 71.0 | -39.7 | 352.3 |
| -29.5 | 0.104 | -19.66 | 0.0019 | -27.23 | 90.0 | 78.4 | -44.3 | 347.7 |
| -29.8 | 0.113 | -18.94 | 0.0022 | -26.51 | 97.8 | 84.9 | -48.6 | 343.4 |
| -30.2 | 0.121 | -18.34 | 0.0026 | -25.91 | 104.8 | 90.5 | -52.7 | 339.3 |
| -30.5 | 0.129 | -17.79 | 0.0029 | -25.36 | 111.7 | 96.2 | -56.7 | 335.3 |
| -30.9 | 0.136 | -17.33 | 0.0032 | -24.9 | 117.7 | 101.0 | -60.5 | 331.5 |
| -31.2 | 0.142 | -16.95 | 0.0035 | -24.52 | 122.9 | 105.2 | -63.7 | 328.3 |
| -31.5 | 0.147 | -16.65 | 0.0038 | -24.22 | 127.3 | 108.5 | -66.5 | 325.5 |
| -31.9 | 0.152 | -16.36 | 0.004 | -23.93 | 131.6 | 111.7 | -69.5 | 322.5 |
| -32.2 | 0.155 | -16.19 | 0.0042 | -23.76 | 134.2 | 113.6 | -71.5 | 320.5 |
| -32.6 | 0.158 | -16.03 | 0.0044 | -23.6 | 136.8 | 115.2 | -73.7 | 318.3 |
| -32.9 | 0.160 | -15.92 | 0.0045 | -23.49 | 138.5 | 116.3 | -75.2 | 316.8 |
| -33.2 | 0.161 | -15.86 | 0.0045 | -23.43 | 139.4 | 116.6 | -76.3 | 315.7 |
| -33.6 | 0.162 | -15.81 | 0.0046 | -23.38 | 140.3 | 116.8 | -77.6 | 314.4 |
| -33.9 | 0.161 | -15.86 | 0.0045 | -23.43 | 139.4 | 115.7 | -77.7 | 314.3 |
| -34.3 | 0.160 | -15.92 | 0.0045 | -23.49 | 138.5 | 114.4 | -78.1 | 313.9 |
| -34.6 | 0.158 | -16.03 | 0.0044 | -23.6 | 136.8 | 112.6 | -77.7 | 314.3 |
| -34.9 | 0.156 | -16.14 | 0.0043 | -23.71 | 135.1 | 110.8 | -77.3 | 314.7 |
| -35.3 | 0.152 | -16.36 | 0.004 | -23.93 | 131.6 | 107.4 | -76.0 | 316.0 |
| -35.6 | 0.148 | -16.59 | 0.0038 | -24.16 | 128.1 | 104.2 | -74.6 | 317.4 |
| -36.0 | 0.144 | -16.83 | 0.0036 | -24.4 | 124.7 | 100.9 | -73.3 | 318.7 |
| -36.3 | 0.138 | -17.20 | 0.0033 | -24.77 | 119.5 | 96.3 | -70.7 | 321.3 |
| -36.6 | 0.133 | -17.52 | 0.0031 | -25.09 | 115.1 | 92.4 | -68.7 | 323.3 |
| -37.0 | 0.126 | -17.99 | 0.0028 | -25.56 | 109.1 | 87.1 | -65.7 | 326.3 |
| -37.3 | 0.119 | -18.49 | 0.0025 | -26.06 | 103.0 | 82.0 | -62.4 | 329.6 |
| -37.7 | 0.112 | -19.02 | 0.0022 | -26.59 | 97.0 | 76.7 | -59.3 | 332.7 |
| -38.0 | 0.104 | -19.66 | 0.0019 | -27.23 | 90.0 | 71.0 | -55.4 | 336.6 |
| -38.3 | 0.096 | -20.35 | 0.0016 | -27.92 | 83.1 | 65.2 | -51.5 | 340.5 |
| -38.7 | 0.088 | -21.11 | 0.0014 | -28.68 | 76.2 | 59.5 | -47.6 | 344.4 |
| -39.0 | 0.080 | -21.94 | 0.0011 | -29.51 | 69.3 | 53.8 | -43.6 | 348.4 |
| -39.4 | 0.071 | -22.97 | 0.0009 | -30.54 | 61.5 | 47.5 | -39.0 | 353.0 |
| -39.7 | 0.062 | -24.15 | 0.0007 | -31.72 | 53.7 | 41.3 | -34.3 | 357.7 |
| -40.0 | 0.053 | -25.51 | 0.0005 | -33.08 | 45.9 | 35.2 | -29.5 | 362.5 |
| -40.4 | 0.044 | -27.13 | 0.0003 | -34.7 | 38.1 | 29.0 | -24.7 | 367.3 |
| -40.7 | 0.035 | -29.12 | 0.0002 | -36.69 | 30.3 | 23.0 | -19.8 | 372.2 |
| -41.1 | 0.026 | -31.70 | 0.0001 | -39.27 | 22.5 | 17.0 | -14.8 | 377.2 |
| -41.4 | 0.017 | -35.39 | 0.0001 | -42.96 | 14.7 | 11.0 | -9.7 | 382.3 |
| -41.7 | 0.008 | -41.94 | 0 | -49.51 | 6.9 | 5.2 | -4.6 | 387.4 |
| -42.1 | 0.001 | -60.00 | 0 | -67.57 | 0.9 | 0.6 | -0.6 | 391.4 |
| -42.4 | 0.010 | -40.00 | 0 | -47.57 | 8.7 | 6.4 | -5.8 | 386.2 |
| -42.8 | 0.018 | -34.89 | 0.0001 | -42.46 | 15.6 | 11.4 | -10.6 | 381.4 |
| -43.1 | 0.026 | -31.70 | 0.0001 | -39.27 | 22.5 | 16.4 | -15.4 | 376.6 |
| -43.4 | 0.034 | -29.37 | 0.0002 | -36.94 | 29.4 | 21.4 | -20.2 | 371.8 |

FCC Form 349
Exhibit No. 13B
Waiver Request 47CFR74.1204

| | | | | | | | | |
|-------|-------|--------|--------|--------|------|------|-------|-------|
| -43.8 | 0.042 | -27.54 | 0.0003 | -35.1 | 36.4 | 26.2 | -25.2 | 366.8 |
| -44.1 | 0.049 | -26.20 | 0.0004 | -33.77 | 42.4 | 30.5 | -29.5 | 362.5 |
| -44.5 | 0.056 | -25.04 | 0.0005 | -32.61 | 48.5 | 34.6 | -34.0 | 358.0 |
| -44.8 | 0.063 | -24.01 | 0.0007 | -31.58 | 54.5 | 38.7 | -38.4 | 353.6 |
| -45.1 | 0.069 | -23.22 | 0.0008 | -30.79 | 59.7 | 42.2 | -42.3 | 349.7 |
| -45.5 | 0.075 | -22.50 | 0.001 | -30.07 | 64.9 | 45.5 | -46.3 | 345.7 |
| -45.8 | 0.080 | -21.94 | 0.0011 | -29.51 | 69.3 | 48.3 | -49.7 | 342.3 |
| -46.2 | 0.085 | -21.41 | 0.0013 | -28.98 | 73.6 | 50.9 | -53.1 | 338.9 |
| -46.5 | 0.090 | -20.92 | 0.0014 | -28.48 | 77.9 | 53.6 | -56.5 | 335.5 |
| -46.8 | 0.094 | -20.54 | 0.0015 | -28.11 | 81.4 | 55.7 | -59.3 | 332.7 |
| -47.2 | 0.098 | -20.18 | 0.0017 | -27.75 | 84.8 | 57.6 | -62.3 | 329.7 |
| -47.5 | 0.101 | -19.91 | 0.0018 | -27.48 | 87.4 | 59.1 | -64.5 | 327.5 |
| -47.9 | 0.104 | -19.66 | 0.0019 | -27.23 | 90.0 | 60.4 | -66.8 | 325.2 |
| -48.2 | 0.106 | -19.49 | 0.002 | -27.06 | 91.8 | 61.2 | -68.4 | 323.6 |
| -48.5 | 0.108 | -19.33 | 0.002 | -26.9 | 93.5 | 62.0 | -70.0 | 322.0 |
| -48.9 | 0.110 | -19.17 | 0.0021 | -26.74 | 95.2 | 62.6 | -71.8 | 320.2 |
| -49.2 | 0.111 | -19.09 | 0.0022 | -26.66 | 96.1 | 62.8 | -72.7 | 319.3 |
| -49.6 | 0.112 | -19.02 | 0.0022 | -26.59 | 97.0 | 62.8 | -73.8 | 318.2 |
| -49.9 | 0.112 | -19.02 | 0.0022 | -26.59 | 97.0 | 62.5 | -74.2 | 317.8 |
| -50.2 | 0.112 | -19.02 | 0.0022 | -26.59 | 97.0 | 62.1 | -74.5 | 317.5 |
| -50.6 | 0.112 | -19.02 | 0.0022 | -26.59 | 97.0 | 61.5 | -74.9 | 317.1 |
| -50.9 | 0.112 | -19.02 | 0.0022 | -26.59 | 97.0 | 61.2 | -75.3 | 316.7 |
| -51.3 | 0.111 | -19.09 | 0.0022 | -26.66 | 96.1 | 60.1 | -75.0 | 317.0 |
| -51.6 | 0.109 | -19.25 | 0.0021 | -26.82 | 94.4 | 58.6 | -74.0 | 318.0 |
| -51.9 | 0.108 | -19.33 | 0.002 | -26.9 | 93.5 | 57.7 | -73.6 | 318.4 |
| -52.3 | 0.106 | -19.49 | 0.002 | -27.06 | 91.8 | 56.1 | -72.6 | 319.4 |
| -52.6 | 0.104 | -19.66 | 0.0019 | -27.23 | 90.0 | 54.7 | -71.5 | 320.5 |
| -53.0 | 0.102 | -19.83 | 0.0018 | -27.4 | 88.3 | 53.1 | -70.5 | 321.5 |
| -53.3 | 0.099 | -20.09 | 0.0017 | -27.66 | 85.7 | 51.2 | -68.7 | 323.3 |
| -53.6 | 0.096 | -20.35 | 0.0016 | -27.92 | 83.1 | 49.3 | -66.9 | 325.1 |
| -54.0 | 0.093 | -20.63 | 0.0015 | -28.2 | 80.5 | 47.3 | -65.1 | 326.9 |
| -54.3 | 0.090 | -20.92 | 0.0014 | -28.48 | 77.9 | 45.5 | -63.3 | 328.7 |
| -54.7 | 0.087 | -21.21 | 0.0013 | -28.78 | 75.3 | 43.5 | -61.5 | 330.5 |
| -55.0 | 0.084 | -21.51 | 0.0012 | -29.08 | 72.7 | 41.7 | -59.6 | 332.4 |
| -55.3 | 0.080 | -21.94 | 0.0011 | -29.51 | 69.3 | 39.4 | -56.9 | 335.1 |
| -55.7 | 0.077 | -22.27 | 0.001 | -29.84 | 66.7 | 37.6 | -55.1 | 336.9 |
| -56.0 | 0.073 | -22.73 | 0.0009 | -30.3 | 63.2 | 35.3 | -52.4 | 339.6 |
| -56.4 | 0.069 | -23.22 | 0.0008 | -30.79 | 59.7 | 33.1 | -49.8 | 342.2 |
| -56.7 | 0.065 | -23.74 | 0.0007 | -31.31 | 56.3 | 30.9 | -47.0 | 345.0 |
| -57.0 | 0.062 | -24.15 | 0.0007 | -31.72 | 53.7 | 29.2 | -45.0 | 347.0 |
| -57.4 | 0.058 | -24.73 | 0.0006 | -32.3 | 50.2 | 27.1 | -42.3 | 349.7 |
| -57.7 | 0.054 | -25.35 | 0.0005 | -32.92 | 46.8 | 25.0 | -39.5 | 352.5 |
| -58.1 | 0.050 | -26.02 | 0.0004 | -33.59 | 43.3 | 22.9 | -36.8 | 355.2 |
| -58.4 | 0.046 | -26.74 | 0.0004 | -34.31 | 39.8 | 20.9 | -33.9 | 358.1 |
| -58.7 | 0.043 | -27.33 | 0.0003 | -34.9 | 37.2 | 19.3 | -31.8 | 360.2 |
| -59.1 | 0.039 | -28.18 | 0.0003 | -35.75 | 33.8 | 17.3 | -29.0 | 363.0 |
| -59.4 | 0.035 | -29.12 | 0.0002 | -36.69 | 30.3 | 15.4 | -26.1 | 365.9 |
| -59.8 | 0.032 | -29.90 | 0.0002 | -37.47 | 27.7 | 13.9 | -23.9 | 368.1 |
| -60.1 | 0.028 | -31.06 | 0.0001 | -38.63 | 24.2 | 12.1 | -21.0 | 371.0 |
| -60.4 | 0.025 | -32.04 | 0.0001 | -39.61 | 21.6 | 10.7 | -18.8 | 373.2 |
| -60.8 | 0.021 | -33.56 | 0.0001 | -41.13 | 18.2 | 8.9 | -15.9 | 376.1 |

FCC Form 349
Exhibit No. 13B
Waiver Request 47CFR74.1204

| | | | | | | | | |
|-------|-------|--------|--------|--------|------|-----|-------|-------|
| -61.1 | 0.018 | -34.89 | 0.0001 | -42.46 | 15.6 | 7.5 | -13.6 | 378.4 |
| -61.5 | 0.015 | -36.48 | 0 | -44.05 | 13.0 | 6.2 | -11.4 | 380.6 |
| -61.8 | 0.012 | -38.42 | 0 | -45.99 | 10.4 | 4.9 | -9.2 | 382.8 |
| -62.1 | 0.009 | -40.92 | 0 | -48.48 | 7.8 | 3.6 | -6.9 | 385.1 |
| -62.5 | 0.006 | -44.44 | 0 | -52.01 | 5.2 | 2.4 | -4.6 | 387.4 |
| -62.8 | 0.003 | -50.46 | 0 | -58.03 | 2.6 | 1.2 | -2.3 | 389.7 |
| -63.2 | 0.001 | -60.00 | 0 | -67.57 | 0.9 | 0.4 | -0.8 | 391.2 |
| -63.5 | 0.002 | -53.98 | 0 | -61.55 | 1.7 | 0.8 | -1.5 | 390.5 |
| -63.8 | 0.004 | -47.96 | 0 | -55.53 | 3.5 | 1.5 | -3.1 | 388.9 |
| -64.2 | 0.007 | -43.10 | 0 | -50.67 | 6.1 | 2.6 | -5.5 | 386.5 |
| -64.5 | 0.009 | -40.92 | 0 | -48.48 | 7.8 | 3.4 | -7.0 | 385.0 |
| -64.9 | 0.011 | -39.17 | 0 | -46.74 | 9.5 | 4.0 | -8.6 | 383.4 |
| -65.2 | 0.013 | -37.72 | 0 | -45.29 | 11.3 | 4.7 | -10.2 | 381.8 |
| -65.5 | 0.014 | -37.08 | 0 | -44.65 | 12.1 | 5.0 | -11.0 | 381.0 |
| -65.9 | 0.016 | -35.92 | 0 | -43.49 | 13.9 | 5.7 | -12.6 | 379.4 |
| -66.2 | 0.018 | -34.89 | 0.0001 | -42.46 | 15.6 | 6.3 | -14.3 | 377.7 |
| -66.6 | 0.019 | -34.42 | 0.0001 | -41.99 | 16.4 | 6.5 | -15.1 | 376.9 |
| -66.9 | 0.020 | -33.98 | 0.0001 | -41.55 | 17.3 | 6.8 | -15.9 | 376.1 |
| -67.2 | 0.022 | -33.15 | 0.0001 | -40.72 | 19.0 | 7.4 | -17.6 | 374.4 |
| -67.6 | 0.023 | -32.77 | 0.0001 | -40.34 | 19.9 | 7.6 | -18.4 | 373.6 |
| -67.9 | 0.024 | -32.40 | 0.0001 | -39.97 | 20.8 | 7.8 | -19.3 | 372.7 |
| -68.3 | 0.025 | -32.04 | 0.0001 | -39.61 | 21.6 | 8.0 | -20.1 | 371.9 |
| -68.6 | 0.026 | -31.70 | 0.0001 | -39.27 | 22.5 | 8.2 | -21.0 | 371.0 |
| -68.9 | 0.026 | -31.70 | 0.0001 | -39.27 | 22.5 | 8.1 | -21.0 | 371.0 |
| -69.3 | 0.027 | -31.37 | 0.0001 | -38.94 | 23.4 | 8.3 | -21.9 | 370.1 |
| -69.6 | 0.027 | -31.37 | 0.0001 | -38.94 | 23.4 | 8.1 | -21.9 | 370.1 |
| -70.0 | 0.028 | -31.06 | 0.0001 | -38.63 | 24.2 | 8.3 | -22.8 | 369.2 |
| -70.3 | 0.028 | -31.06 | 0.0001 | -38.63 | 24.2 | 8.2 | -22.8 | 369.2 |
| -70.6 | 0.029 | -30.75 | 0.0001 | -38.32 | 25.1 | 8.3 | -23.7 | 368.3 |
| -71.0 | 0.029 | -30.75 | 0.0001 | -38.32 | 25.1 | 8.2 | -23.7 | 368.3 |
| -71.3 | 0.029 | -30.75 | 0.0001 | -38.32 | 25.1 | 8.0 | -23.8 | 368.2 |
| -71.7 | 0.029 | -30.75 | 0.0001 | -38.32 | 25.1 | 7.9 | -23.8 | 368.2 |
| -72.0 | 0.029 | -30.75 | 0.0001 | -38.32 | 25.1 | 7.8 | -23.9 | 368.1 |
| -72.3 | 0.029 | -30.75 | 0.0001 | -38.32 | 25.1 | 7.6 | -23.9 | 368.1 |
| -72.7 | 0.029 | -30.75 | 0.0001 | -38.32 | 25.1 | 7.5 | -24.0 | 368.0 |
| -73.0 | 0.029 | -30.75 | 0.0001 | -38.32 | 25.1 | 7.3 | -24.0 | 368.0 |
| -73.4 | 0.029 | -30.75 | 0.0001 | -38.32 | 25.1 | 7.2 | -24.1 | 367.9 |
| -73.7 | 0.029 | -30.75 | 0.0001 | -38.32 | 25.1 | 7.0 | -24.1 | 367.9 |
| -74.0 | 0.029 | -30.75 | 0.0001 | -38.32 | 25.1 | 6.9 | -24.1 | 367.9 |
| -74.4 | 0.028 | -31.06 | 0.0001 | -38.63 | 24.2 | 6.5 | -23.3 | 368.7 |
| -74.7 | 0.028 | -31.06 | 0.0001 | -38.63 | 24.2 | 6.4 | -23.4 | 368.6 |
| -75.1 | 0.028 | -31.06 | 0.0001 | -38.63 | 24.2 | 6.2 | -23.4 | 368.6 |
| -75.4 | 0.027 | -31.37 | 0.0001 | -38.94 | 23.4 | 5.9 | -22.6 | 369.4 |
| -75.7 | 0.027 | -31.37 | 0.0001 | -38.94 | 23.4 | 5.8 | -22.7 | 369.3 |
| -76.1 | 0.027 | -31.37 | 0.0001 | -38.94 | 23.4 | 5.6 | -22.7 | 369.3 |
| -76.4 | 0.026 | -31.70 | 0.0001 | -39.27 | 22.5 | 5.3 | -21.9 | 370.1 |
| -76.8 | 0.026 | -31.70 | 0.0001 | -39.27 | 22.5 | 5.1 | -21.9 | 370.1 |
| -77.1 | 0.025 | -32.04 | 0.0001 | -39.61 | 21.6 | 4.8 | -21.1 | 370.9 |
| -77.4 | 0.025 | -32.04 | 0.0001 | -39.61 | 21.6 | 4.7 | -21.1 | 370.9 |
| -77.8 | 0.024 | -32.40 | 0.0001 | -39.97 | 20.8 | 4.4 | -20.3 | 371.7 |
| -78.1 | 0.024 | -32.40 | 0.0001 | -39.97 | 20.8 | 4.3 | -20.3 | 371.7 |

FCC Form 349
Exhibit No. 13B
Waiver Request 47CFR74.1204

| | | | | | | | | |
|-------|-------|--------|--------|--------|------|------|-------|-------|
| -78.5 | 0.023 | -32.77 | 0.0001 | -40.34 | 19.9 | 4.0 | -19.5 | 372.5 |
| -78.8 | 0.023 | -32.77 | 0.0001 | -40.34 | 19.9 | 3.9 | -19.5 | 372.5 |
| -79.1 | 0.022 | -33.15 | 0.0001 | -40.72 | 19.0 | 3.6 | -18.7 | 373.3 |
| -79.5 | 0.021 | -33.56 | 0.0001 | -41.13 | 18.2 | 3.3 | -17.9 | 374.1 |
| -79.8 | 0.021 | -33.56 | 0.0001 | -41.13 | 18.2 | 3.2 | -17.9 | 374.1 |
| -80.2 | 0.020 | -33.98 | 0.0001 | -41.55 | 17.3 | 2.9 | -17.1 | 374.9 |
| -80.5 | 0.020 | -33.98 | 0.0001 | -41.55 | 17.3 | 2.9 | -17.1 | 374.9 |
| -80.8 | 0.019 | -34.42 | 0.0001 | -41.99 | 16.4 | 2.6 | -16.2 | 375.8 |
| -81.2 | 0.018 | -34.89 | 0.0001 | -42.46 | 15.6 | 2.4 | -15.4 | 376.6 |
| -81.5 | 0.018 | -34.89 | 0.0001 | -42.46 | 15.6 | 2.3 | -15.4 | 376.6 |
| -81.9 | 0.017 | -35.39 | 0.0001 | -42.96 | 14.7 | 2.1 | -14.6 | 377.4 |
| -82.2 | 0.017 | -35.39 | 0.0001 | -42.96 | 14.7 | 2.0 | -14.6 | 377.4 |
| -82.5 | 0.016 | -35.92 | 0 | -43.49 | 13.9 | 1.8 | -13.7 | 378.3 |
| -82.9 | 0.015 | -36.48 | 0 | -44.05 | 13.0 | 1.6 | -12.9 | 379.1 |
| -83.2 | 0.015 | -36.48 | 0 | -44.05 | 13.0 | 1.5 | -12.9 | 379.1 |
| -83.6 | 0.014 | -37.08 | 0 | -44.65 | 12.1 | 1.4 | -12.0 | 380.0 |
| -83.9 | 0.014 | -37.08 | 0 | -44.65 | 12.1 | 1.3 | -12.1 | 379.9 |
| -84.2 | 0.013 | -37.72 | 0 | -45.29 | 11.3 | 1.1 | -11.2 | 380.8 |
| -84.6 | 0.012 | -38.42 | 0 | -45.99 | 10.4 | 1.0 | -10.3 | 381.7 |
| -84.9 | 0.012 | -38.42 | 0 | -45.99 | 10.4 | 0.9 | -10.3 | 381.7 |
| -85.3 | 0.011 | -39.17 | 0 | -46.74 | 9.5 | 0.8 | -9.5 | 382.5 |
| -85.6 | 0.011 | -39.17 | 0 | -46.74 | 9.5 | 0.7 | -9.5 | 382.5 |
| -85.9 | 0.010 | -40.00 | 0 | -47.57 | 8.7 | 0.6 | -8.6 | 383.4 |
| -86.3 | 0.010 | -40.00 | 0 | -47.57 | 8.7 | 0.6 | -8.6 | 383.4 |
| -86.6 | 0.009 | -40.92 | 0 | -48.48 | 7.8 | 0.5 | -7.8 | 384.2 |
| -87.0 | 0.008 | -41.94 | 0 | -49.51 | 6.9 | 0.4 | -6.9 | 385.1 |
| -87.3 | 0.008 | -41.94 | 0 | -49.51 | 6.9 | 0.3 | -6.9 | 385.1 |
| -87.6 | 0.008 | -41.94 | 0 | -49.51 | 6.9 | 0.3 | -6.9 | 385.1 |
| -88.0 | 0.007 | -43.10 | 0 | -50.67 | 6.1 | 0.2 | -6.1 | 385.9 |
| -88.3 | 0.007 | -43.10 | 0 | -50.67 | 6.1 | 0.2 | -6.1 | 385.9 |
| -88.7 | 0.006 | -44.44 | 0 | -52.01 | 5.2 | 0.1 | -5.2 | 386.8 |
| -89.0 | 0.006 | -44.44 | 0 | -52.01 | 5.2 | 0.1 | -5.2 | 386.8 |
| -89.3 | 0.006 | -44.44 | 0 | -52.01 | 5.2 | 0.1 | -5.2 | 386.8 |
| -89.7 | 0.006 | -44.44 | 0 | -52.01 | 5.2 | 0.0 | -5.2 | 386.8 |
| -90.0 | 0.008 | -41.94 | 0 | -49.51 | 6.9 | 0.0 | -6.9 | 385.1 |
| -90.4 | 0.008 | -41.94 | 0 | -49.51 | 6.9 | 0.0 | -6.9 | 385.1 |
| -90.7 | 0.009 | -40.92 | 0 | -48.48 | 7.8 | -0.1 | -7.8 | 384.2 |
| -91.0 | 0.009 | -40.92 | 0 | -48.48 | 7.8 | -0.1 | -7.8 | 384.2 |
| -91.4 | 0.010 | -40.00 | 0 | -47.57 | 8.7 | -0.2 | -8.7 | 383.3 |
| -91.7 | 0.011 | -39.17 | 0 | -46.74 | 9.5 | -0.3 | -9.5 | 382.5 |
| -92.1 | 0.012 | -38.42 | 0 | -45.99 | 10.4 | -0.4 | -10.4 | 381.6 |

TFC2K675.DAT

MAX: 865.8m -78.1m 313.9m