



Proposal #: **C-02852** Antenna Type: **THV-6A10-R 3C140** Channel: **10 DTV**
 Call Letters: **WSWP-DT** Location: **GRANDVIEW, WV**

| Electrical Specifications | | Value | | Remarks | |
|---|-----------|------------------|--------------|-------------------|-----------------------------|
| | | Ratio | dBd | | |
| RMS Gain at Main Lobe over Halfwave Dipole | Hpol | | | | |
| | Vpol | | | | |
| RMS Gain at Horizontal over Halfwave Dipole | Hpol | | | | |
| | Vpol | | | | |
| Peak Directional Gain over Halfwave Dipole | Hpol | 9.8 | 9.91 | | |
| | Vpol | | | | |
| Peak Directional Gain at Horizontal over Halfwave Dipole | Hpol | 9.5 | 9.78 | | |
| | Vpol | | | | |
| Circularity Directional | | dB | | | |
| Axial Ratio | | dB | | | |
| Beam Tilt | | 0.75 deg | | | |
| Average Power | | 30 kW | 14.77 dBk | | |
| Antenna Input: T/L | | 3 1/8 in | 50.0 ohm | Type: | EIA/DCA |
| Maximum Antenna Input VSWR | | Channel 1.15 : 1 | | Notes: | |
| | | | | | |
| | | | | | |
| Patterns | Azimuth | 3C140 | | | |
| | Elevation | 07V070075 | 07V070075-90 | | |
| | | | | | |
| Mechanical Specifications | | Metric | English | | With Support Pole & Antenna |
| Height with Lightning Protector | H4 | 13.4 m | 44.1 ft | | 90.1 ft |
| Height Less Lightning Protector | H2 | 12.2 m | 40.1 ft | TIA/EIA-222-F. | 86.1 ft |
| Height of Center of Radiation | H3 | 7.0 m | 21.9 ft | Above tower top | 67.9 ft |
| Basic Wind Speed | V | 112.7 km/h | 70 mi/h | | |
| | | | | | |
| Force Coeff. x Projected Area | CaAc | 5.3 m² | 57.5 ft² | Above base flange | 115.0 ft² |
| Moment Arm | D1 | 6.6 m | 21.8 ft | Above base flange | 48.8 ft |
| Force Coeff. x Projected Area | CaAc | m² | ft² | | |
| Moment Arm | D3 | m | ft | | |
| Pole Bury Length | D2 | m | ft | | |
| Weight | W | 4.6 t | 10,200 lbs | | 18,600 lbs |
| Radome | | | | | |
| Antenna designed in accordance with AISC specifications for design of structural steel for building as prescribed by TIA/EIA-222-F. | | | | | |

NOTE:

Prepared By : **JBC** TLB Approved By : **KWC**
 Original Date : **8-Aug-07**

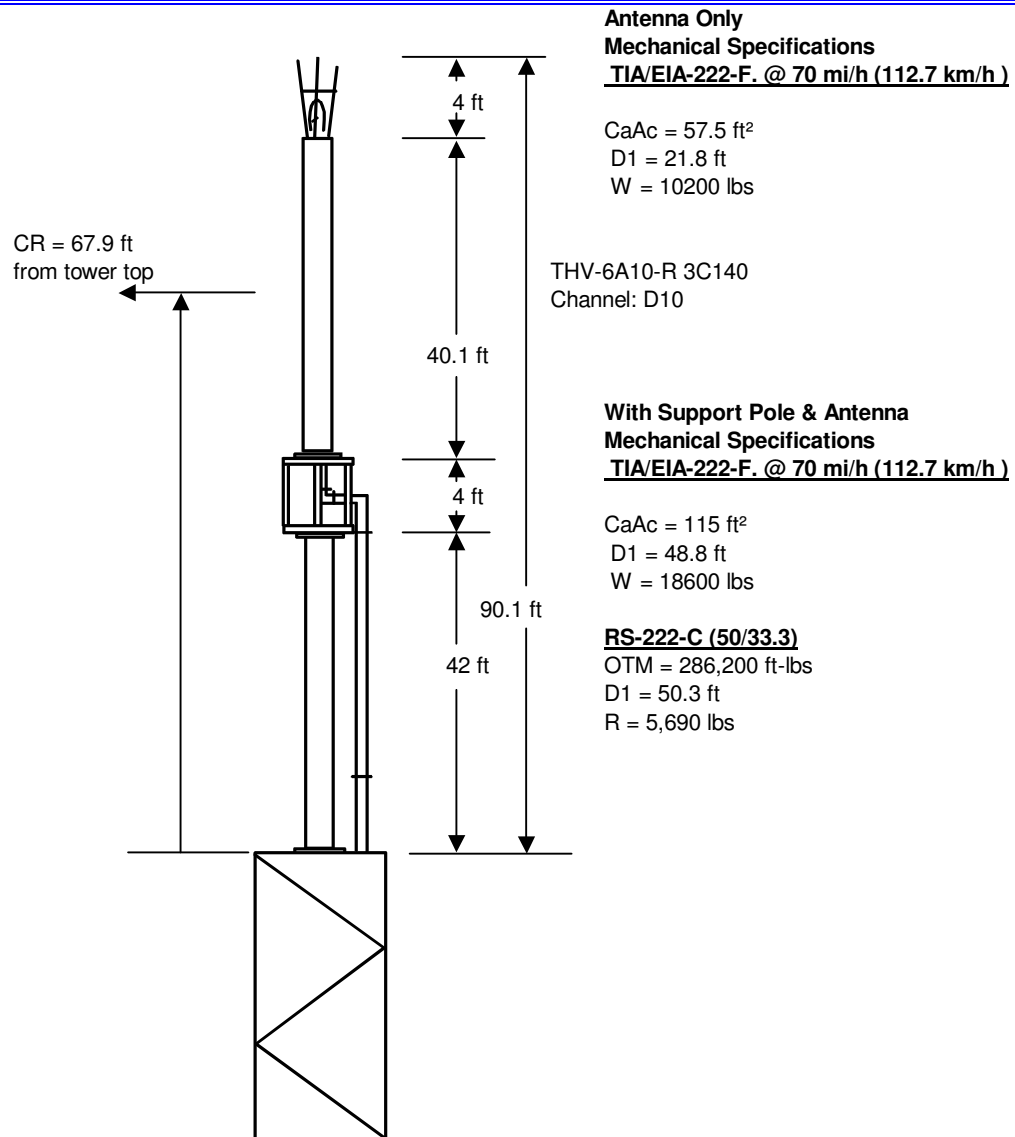
This document contains proprietary and confidential information of Dielectric Communications and SPX Corporation. It is to be used solely for the purpose for which it is provided. No disclosure, reproduction, or use of this document or any part of it may be made without the written permission of Dielectric Communications or SPX Corporation.



Proposal #: **C-02852**
Call Letters: **WSWP-DT**

Antenna Type: **THV-6A10-R 3C140**
Location: **GRANDVIEW, WV**

Channel: **10 DTV**



JBC-082108-1

Not to Scale

This document contains proprietary and confidential information of Dielectric Communications and SPX Corporation. It is to be used solely for the purpose for which it is provided. No disclosure, reproduction, or use of this document or any part of it may be made without the written permission of Dielectric Communications or SPX Corporation.



| | | |
|-----------------|-------------------------|-------------------|
| Proposal Number | C-02852 | |
| Date | 8-Aug-07 | |
| Call Letters | WSWP-DT | Channel 10 |
| Location | GRANDVIEW, WV | |
| Customer | | |
| Antenna Type | THV-6A10-R 3C140 | |

DTV SYSTEM SUMMARY

Antenna:

| | | | | |
|-----------|-------------------------|--------------|----------------|-------------------------------|
| Type: | THV-6A10-R 3C140 | ERP: | 24.0 kW | H Pol (13.80 dBk) |
| Channel: | 10 | Peak Gain*: | 9.80 | (9.91 dB) |
| Location: | GRANDVIEW, WV | Input Power: | 2.4 kW | (3.89 dBk) |

Transmission Line:

| | | | |
|------------|-----------------|----------------|----------------|
| Type: | EIA/DCA | Attenuation: | 0.62 dB |
| Size: | 3.1/8 in | Efficiency: | 86.7% |
| Impedance: | 50 ohm | | |
| Length: | 450 ft | 137.2 m | |

Transmitter:

| | | |
|-----------------|---------------|---------------------|
| Power Required: | 2.8 kW | (4.51 dBk) |
|-----------------|---------------|---------------------|

* Gain is with respect to half wave dipole.

This document contains proprietary and confidential information of Dielectric Communications and SPX Corporation. It is to be used solely for the purpose for which it is provided. No disclosure, reproduction, or use of this document or any part of it may be made without the written permission of Dielectric Communications or SPX Corporation.

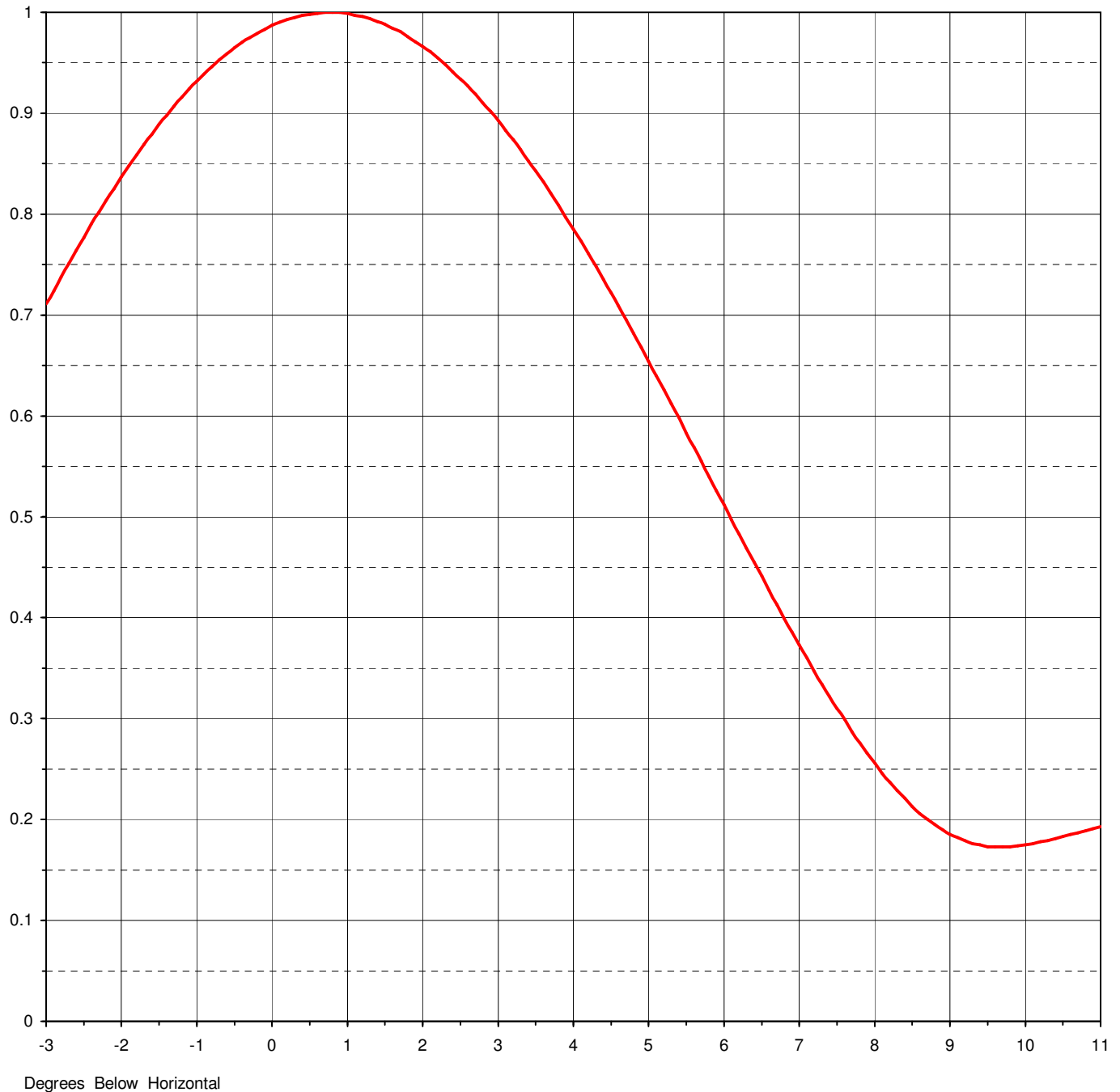


| | | | |
|-----------------|-------------------------|---------|-----------|
| Proposal Number | C-02852 | | |
| Date | 8-Aug-07 | | |
| Call Letters | WSWP-DT | Channel | 10 |
| Location | GRANDVIEW, WV | | |
| Customer | | | |
| Antenna Type | THV-6A10-R 3C140 | | |

ELEVATION PATTERN

| | | |
|------------------------|-------------------|--------------------|
| RMS Gain at Main Lobe | 7.00 | (8.45 dB) |
| RMS Gain at Horizontal | 6.80 | (8.33 dB) |
| Calculated / Measured | Calculated | |

| | |
|-----------|-------------------|
| Beam Tilt | 0.75 deg |
| Frequency | 195.00 MHz |
| Drawing # | 07V070075 |



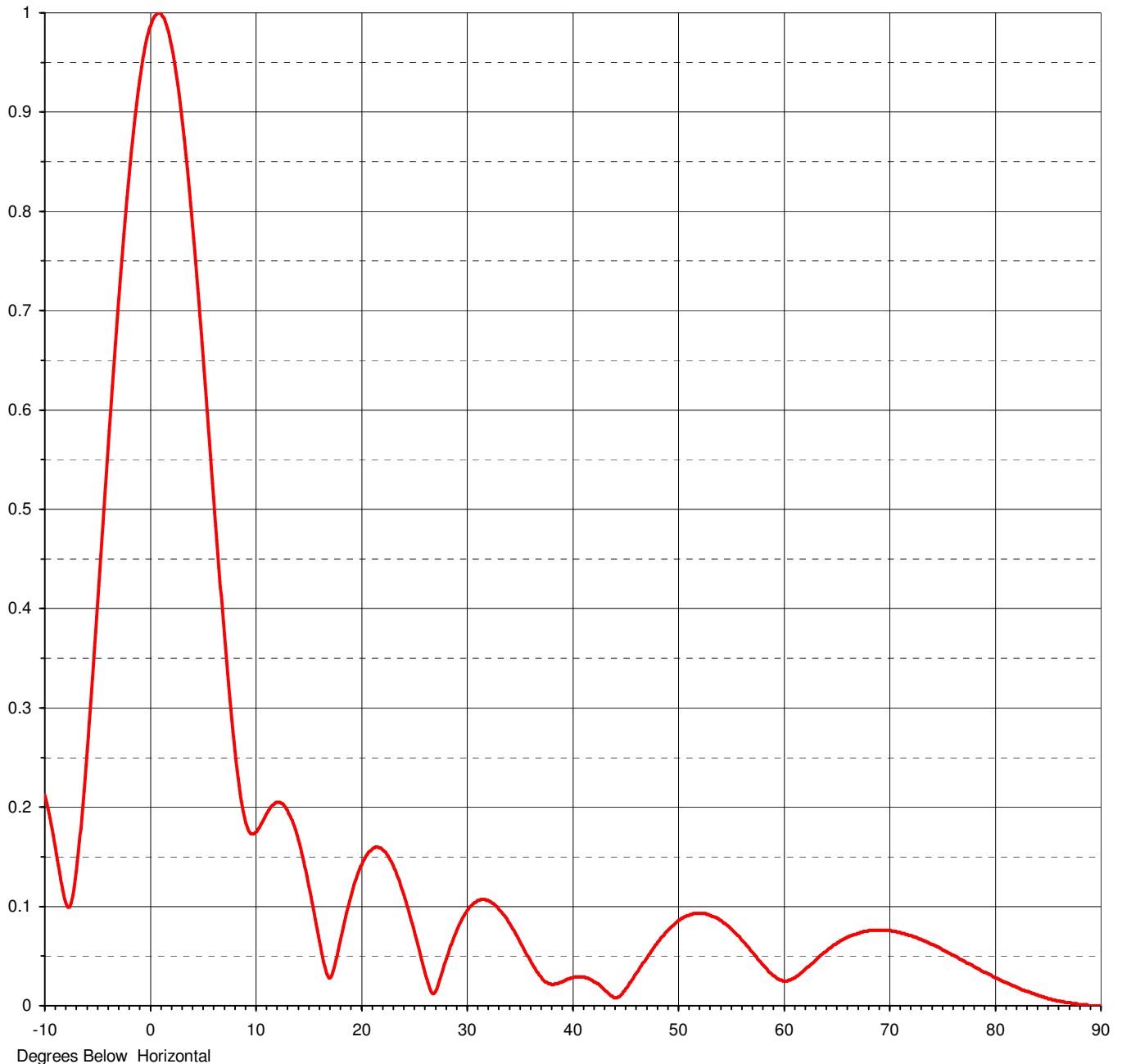


| | | |
|-----------------|------------------|------------|
| Proposal Number | C-02852 | |
| Date | 8-Aug-07 | |
| Call Letters | WSWP-DT | Channel 10 |
| Location | GRANDVIEW, WV | |
| Customer | | |
| Antenna Type | THV-6A10-R 3C140 | |

ELEVATION PATTERN

| | | |
|------------------------|------------|-------------|
| RMS Gain at Main Lobe | 7.00 | (8.45 dB) |
| RMS Gain at Horizontal | 6.80 | (8.33 dB) |
| Calculated / Measured | Calculated | |

| | |
|-----------|--------------|
| Beam Tilt | 0.75 deg |
| Frequency | 195.00 MHz |
| Drawing # | 07V070075-90 |



This document contains proprietary and confidential information of Dielectric Communications and SPX Corporation. It is to be used solely for the purpose for which it is provided. No disclosure, reproduction, or use of this document or any part of it may be made without the written permission of Dielectric Communications or SPX Corporation.



Proposal Number **C-02852**
 Date **8-Aug-07**
 Call Letters **WSWP-DT** Channel **10**
 Location **GRANDVIEW, WV**
 Customer
 Antenna Type **THV-6A10-R 3C140**

TABULATION OF ELEVATION PATTERN

Elevation Pattern Drawing #: **07V070075-90**

| Angle | Field | Angle | Field | Angle | Field | Angle | Field | Angle | Field | Angle | Field |
|-------|-------|-------|-------|-------|-------|-------|-------|-------|-------|-------|-------|
| -10.0 | 0.212 | 2.4 | 0.941 | 10.6 | 0.183 | 30.5 | 0.101 | 51.0 | 0.091 | 71.5 | 0.072 |
| -9.5 | 0.189 | 2.6 | 0.927 | 10.8 | 0.187 | 31.0 | 0.105 | 51.5 | 0.093 | 72.0 | 0.071 |
| -9.0 | 0.160 | 2.8 | 0.910 | 11.0 | 0.191 | 31.5 | 0.107 | 52.0 | 0.093 | 72.5 | 0.069 |
| -8.5 | 0.128 | 3.0 | 0.893 | 11.5 | 0.200 | 32.0 | 0.106 | 52.5 | 0.093 | 73.0 | 0.067 |
| -8.0 | 0.104 | 3.2 | 0.874 | 12.0 | 0.205 | 32.5 | 0.103 | 53.0 | 0.092 | 73.5 | 0.064 |
| -7.5 | 0.103 | 3.4 | 0.853 | 12.5 | 0.204 | 33.0 | 0.099 | 53.5 | 0.089 | 74.0 | 0.062 |
| -7.0 | 0.135 | 3.6 | 0.832 | 13.0 | 0.198 | 33.5 | 0.092 | 54.0 | 0.086 | 74.5 | 0.059 |
| -6.5 | 0.190 | 3.8 | 0.809 | 13.5 | 0.187 | 34.0 | 0.084 | 54.5 | 0.083 | 75.0 | 0.056 |
| -6.0 | 0.257 | 4.0 | 0.785 | 14.0 | 0.171 | 34.5 | 0.076 | 55.0 | 0.078 | 75.5 | 0.054 |
| -5.5 | 0.330 | 4.2 | 0.761 | 14.5 | 0.150 | 35.0 | 0.066 | 55.5 | 0.073 | 76.0 | 0.051 |
| -5.0 | 0.407 | 4.4 | 0.735 | 15.0 | 0.125 | 35.5 | 0.056 | 56.0 | 0.067 | 76.5 | 0.048 |
| -4.5 | 0.485 | 4.6 | 0.709 | 15.5 | 0.099 | 36.0 | 0.047 | 56.5 | 0.061 | 77.0 | 0.045 |
| -4.0 | 0.563 | 4.8 | 0.682 | 16.0 | 0.071 | 36.5 | 0.038 | 57.0 | 0.055 | 77.5 | 0.042 |
| -3.5 | 0.639 | 5.0 | 0.654 | 16.5 | 0.044 | 37.0 | 0.030 | 57.5 | 0.049 | 78.0 | 0.039 |
| -3.0 | 0.711 | 5.2 | 0.626 | 17.0 | 0.028 | 37.5 | 0.024 | 58.0 | 0.042 | 78.5 | 0.037 |
| -2.8 | 0.738 | 5.4 | 0.598 | 17.5 | 0.038 | 38.0 | 0.022 | 58.5 | 0.037 | 79.0 | 0.034 |
| -2.6 | 0.764 | 5.6 | 0.569 | 18.0 | 0.061 | 38.5 | 0.022 | 59.0 | 0.031 | 79.5 | 0.031 |
| -2.4 | 0.790 | 5.8 | 0.540 | 18.5 | 0.085 | 39.0 | 0.024 | 59.5 | 0.027 | 80.0 | 0.028 |
| -2.2 | 0.814 | 6.0 | 0.512 | 19.0 | 0.106 | 39.5 | 0.026 | 60.0 | 0.025 | 80.5 | 0.026 |
| -2.0 | 0.837 | 6.2 | 0.483 | 19.5 | 0.125 | 40.0 | 0.028 | 60.5 | 0.026 | 81.0 | 0.023 |
| -1.8 | 0.859 | 6.4 | 0.455 | 20.0 | 0.140 | 40.5 | 0.029 | 61.0 | 0.028 | 81.5 | 0.021 |
| -1.6 | 0.879 | 6.6 | 0.427 | 20.5 | 0.151 | 41.0 | 0.029 | 61.5 | 0.031 | 82.0 | 0.019 |
| -1.4 | 0.898 | 6.8 | 0.399 | 21.0 | 0.157 | 41.5 | 0.028 | 62.0 | 0.036 | 82.5 | 0.016 |
| -1.2 | 0.916 | 7.0 | 0.373 | 21.5 | 0.160 | 42.0 | 0.025 | 62.5 | 0.040 | 83.0 | 0.014 |
| -1.0 | 0.932 | 7.2 | 0.347 | 22.0 | 0.158 | 42.5 | 0.022 | 63.0 | 0.045 | 83.5 | 0.012 |
| -0.8 | 0.946 | 7.4 | 0.322 | 22.5 | 0.152 | 43.0 | 0.017 | 63.5 | 0.050 | 84.0 | 0.011 |
| -0.6 | 0.959 | 7.6 | 0.299 | 23.0 | 0.143 | 43.5 | 0.012 | 64.0 | 0.054 | 84.5 | 0.009 |
| -0.4 | 0.970 | 7.8 | 0.276 | 23.5 | 0.130 | 44.0 | 0.008 | 64.5 | 0.059 | 85.0 | 0.007 |
| -0.2 | 0.979 | 8.0 | 0.256 | 24.0 | 0.115 | 44.5 | 0.009 | 65.0 | 0.063 | 85.5 | 0.006 |
| 0.0 | 0.987 | 8.2 | 0.237 | 24.5 | 0.098 | 45.0 | 0.015 | 65.5 | 0.066 | 86.0 | 0.005 |
| 0.2 | 0.993 | 8.4 | 0.221 | 25.0 | 0.079 | 45.5 | 0.023 | 66.0 | 0.069 | 86.5 | 0.004 |
| 0.4 | 0.997 | 8.6 | 0.206 | 25.5 | 0.059 | 46.0 | 0.031 | 66.5 | 0.071 | 87.0 | 0.003 |
| 0.6 | 0.999 | 8.8 | 0.195 | 26.0 | 0.038 | 46.5 | 0.039 | 67.0 | 0.073 | 87.5 | 0.002 |
| 0.8 | 1.000 | 9.0 | 0.185 | 26.5 | 0.020 | 47.0 | 0.047 | 67.5 | 0.075 | 88.0 | 0.001 |
| 1.0 | 0.999 | 9.2 | 0.179 | 27.0 | 0.013 | 47.5 | 0.055 | 68.0 | 0.076 | 88.5 | 0.001 |
| 1.2 | 0.996 | 9.4 | 0.175 | 27.5 | 0.027 | 48.0 | 0.062 | 68.5 | 0.076 | 89.0 | 0.000 |
| 1.4 | 0.991 | 9.6 | 0.173 | 28.0 | 0.044 | 48.5 | 0.069 | 69.0 | 0.076 | 89.5 | 0.000 |
| 1.6 | 0.984 | 9.8 | 0.173 | 28.5 | 0.060 | 49.0 | 0.075 | 69.5 | 0.076 | 90.0 | 0.000 |
| 1.8 | 0.976 | 10.0 | 0.174 | 29.0 | 0.073 | 49.5 | 0.080 | 70.0 | 0.076 | | |
| 2.0 | 0.966 | 10.2 | 0.176 | 29.5 | 0.085 | 50.0 | 0.085 | 70.5 | 0.075 | | |
| 2.2 | 0.955 | 10.4 | 0.179 | 30.0 | 0.094 | 50.5 | 0.088 | 71.0 | 0.074 | | |

This document contains proprietary and confidential information of Dielectric Communications and SPX Corporation. It is to be used solely for the purpose for which it is provided. No disclosure, reproduction, or use of this document or any part of it may be made without the written permission of Dielectric Communications or SPX Corporation.

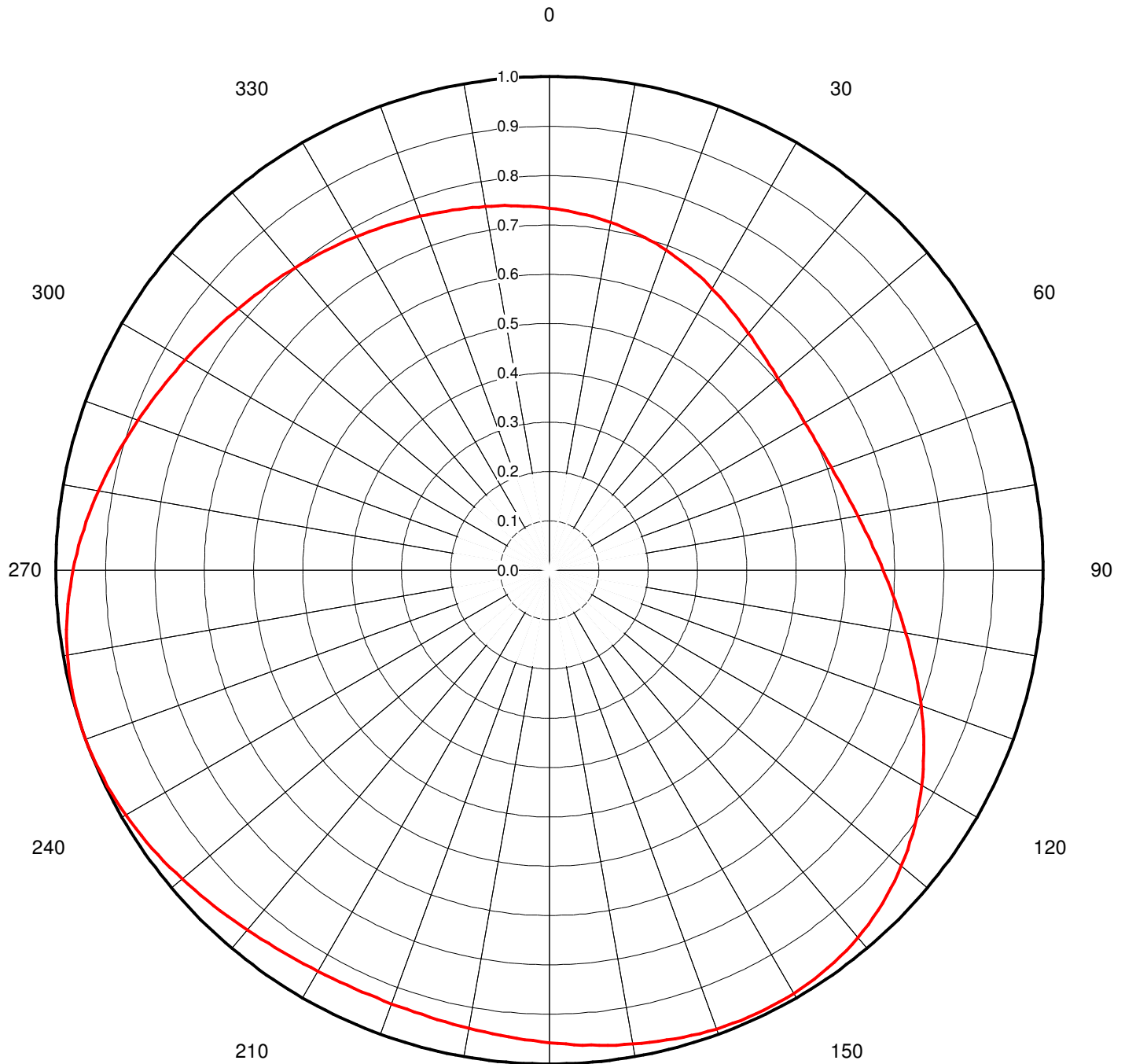


| | | |
|-----------------|------------------|------------|
| Proposal Number | C-02852 | |
| Date | 8-Aug-07 | |
| Call Letters | WSWP-DT | Channel 10 |
| Location | GRANDVIEW, WV | |
| Customer | | |
| Antenna Type | THV-6A10-R 3C140 | |

AZIMUTH PATTERN

Gain **1.40** (1.46 dB)
Calculated / Measured **Calculated**

Frequency **195.00 MHz**
Drawing # **3C140**



180

This document contains proprietary and confidential information of Dielectric Communications and SPX Corporation. It is to be used solely for the purpose for which it is provided. No disclosure, reproduction, or use of this document or any part of it may be made without the written permission of Dielectric Communications or SPX Corporation.



Proposal Number

C-02852

Date

8-Aug-07

Call Letters

WSWP-DT

Channel

10

Location

GRANDVIEW, WV

Customer

Antenna Type

THV-6A10-R 3C140**TABULATION OF AZIMUTH PATTERN**Azimuth Pattern Drawing #: **3C140**

| Angle | Field | Angle | Field | Angle | Field | Angle | Field | Angle | Field | Angle | Field | Angle | Field | Angle | Field |
|-------|-------|-------|-------|-------|-------|-------|-------|-------|-------|-------|-------|-------|-------|-------|-------|
| 0 | 0.733 | 45 | 0.614 | 90 | 0.676 | 135 | 0.954 | 180 | 0.957 | 225 | 0.961 | 270 | 0.965 | 315 | 0.812 |
| 1 | 0.732 | 46 | 0.612 | 91 | 0.681 | 136 | 0.958 | 181 | 0.955 | 226 | 0.963 | 271 | 0.962 | 316 | 0.809 |
| 2 | 0.730 | 47 | 0.610 | 92 | 0.686 | 137 | 0.962 | 182 | 0.953 | 227 | 0.965 | 272 | 0.959 | 317 | 0.807 |
| 3 | 0.729 | 48 | 0.608 | 93 | 0.692 | 138 | 0.965 | 183 | 0.952 | 228 | 0.967 | 273 | 0.955 | 318 | 0.805 |
| 4 | 0.727 | 49 | 0.606 | 94 | 0.697 | 139 | 0.968 | 184 | 0.950 | 229 | 0.970 | 274 | 0.951 | 319 | 0.803 |
| 5 | 0.725 | 50 | 0.605 | 95 | 0.703 | 140 | 0.972 | 185 | 0.949 | 230 | 0.972 | 275 | 0.947 | 320 | 0.801 |
| 6 | 0.723 | 51 | 0.603 | 96 | 0.709 | 141 | 0.974 | 186 | 0.947 | 231 | 0.974 | 276 | 0.944 | 321 | 0.799 |
| 7 | 0.721 | 52 | 0.602 | 97 | 0.715 | 142 | 0.977 | 187 | 0.946 | 232 | 0.976 | 277 | 0.940 | 322 | 0.796 |
| 8 | 0.719 | 53 | 0.601 | 98 | 0.721 | 143 | 0.979 | 188 | 0.944 | 233 | 0.978 | 278 | 0.936 | 323 | 0.794 |
| 9 | 0.717 | 54 | 0.600 | 99 | 0.727 | 144 | 0.982 | 189 | 0.943 | 234 | 0.980 | 279 | 0.932 | 324 | 0.792 |
| 10 | 0.715 | 55 | 0.599 | 100 | 0.733 | 145 | 0.983 | 190 | 0.942 | 235 | 0.982 | 280 | 0.928 | 325 | 0.790 |
| 11 | 0.713 | 56 | 0.598 | 101 | 0.740 | 146 | 0.985 | 191 | 0.941 | 236 | 0.984 | 281 | 0.924 | 326 | 0.788 |
| 12 | 0.711 | 57 | 0.598 | 102 | 0.746 | 147 | 0.987 | 192 | 0.940 | 237 | 0.986 | 282 | 0.919 | 327 | 0.786 |
| 13 | 0.709 | 58 | 0.598 | 103 | 0.753 | 148 | 0.988 | 193 | 0.939 | 238 | 0.988 | 283 | 0.915 | 328 | 0.784 |
| 14 | 0.706 | 59 | 0.598 | 104 | 0.759 | 149 | 0.989 | 194 | 0.938 | 239 | 0.990 | 284 | 0.911 | 329 | 0.783 |
| 15 | 0.704 | 60 | 0.598 | 105 | 0.766 | 150 | 0.990 | 195 | 0.937 | 240 | 0.991 | 285 | 0.907 | 330 | 0.781 |
| 16 | 0.701 | 61 | 0.598 | 106 | 0.773 | 151 | 0.990 | 196 | 0.936 | 241 | 0.993 | 286 | 0.903 | 331 | 0.779 |
| 17 | 0.698 | 62 | 0.598 | 107 | 0.780 | 152 | 0.991 | 197 | 0.936 | 242 | 0.994 | 287 | 0.899 | 332 | 0.777 |
| 18 | 0.696 | 63 | 0.599 | 108 | 0.787 | 153 | 0.991 | 198 | 0.935 | 243 | 0.995 | 288 | 0.895 | 333 | 0.775 |
| 19 | 0.693 | 64 | 0.600 | 109 | 0.794 | 154 | 0.991 | 199 | 0.935 | 244 | 0.996 | 289 | 0.891 | 334 | 0.773 |
| 20 | 0.690 | 65 | 0.601 | 110 | 0.801 | 155 | 0.991 | 200 | 0.934 | 245 | 0.997 | 290 | 0.887 | 335 | 0.772 |
| 21 | 0.687 | 66 | 0.602 | 111 | 0.808 | 156 | 0.991 | 201 | 0.934 | 246 | 0.998 | 291 | 0.883 | 336 | 0.770 |
| 22 | 0.684 | 67 | 0.603 | 112 | 0.815 | 157 | 0.990 | 202 | 0.934 | 247 | 0.999 | 292 | 0.880 | 337 | 0.768 |
| 23 | 0.681 | 68 | 0.605 | 113 | 0.822 | 158 | 0.990 | 203 | 0.934 | 248 | 0.999 | 293 | 0.876 | 338 | 0.766 |
| 24 | 0.678 | 69 | 0.606 | 114 | 0.829 | 159 | 0.989 | 204 | 0.934 | 249 | 1.000 | 294 | 0.872 | 339 | 0.765 |
| 25 | 0.675 | 70 | 0.608 | 115 | 0.837 | 160 | 0.988 | 205 | 0.935 | 250 | 1.000 | 295 | 0.869 | 340 | 0.763 |
| 26 | 0.672 | 71 | 0.610 | 116 | 0.844 | 161 | 0.987 | 206 | 0.935 | 251 | 1.000 | 296 | 0.865 | 341 | 0.761 |
| 27 | 0.669 | 72 | 0.612 | 117 | 0.850 | 162 | 0.986 | 207 | 0.935 | 252 | 1.000 | 297 | 0.862 | 342 | 0.760 |
| 28 | 0.665 | 73 | 0.614 | 118 | 0.857 | 163 | 0.985 | 208 | 0.936 | 253 | 0.999 | 298 | 0.858 | 343 | 0.758 |
| 29 | 0.662 | 74 | 0.617 | 119 | 0.864 | 164 | 0.984 | 209 | 0.937 | 254 | 0.999 | 299 | 0.855 | 344 | 0.757 |
| 30 | 0.659 | 75 | 0.619 | 120 | 0.871 | 165 | 0.982 | 210 | 0.937 | 255 | 0.998 | 300 | 0.852 | 345 | 0.755 |
| 31 | 0.655 | 76 | 0.622 | 121 | 0.878 | 166 | 0.981 | 211 | 0.938 | 256 | 0.997 | 301 | 0.849 | 346 | 0.754 |
| 32 | 0.652 | 77 | 0.625 | 122 | 0.884 | 167 | 0.980 | 212 | 0.939 | 257 | 0.996 | 302 | 0.846 | 347 | 0.752 |
| 33 | 0.649 | 78 | 0.628 | 123 | 0.890 | 168 | 0.978 | 213 | 0.941 | 258 | 0.995 | 303 | 0.843 | 348 | 0.751 |
| 34 | 0.646 | 79 | 0.631 | 124 | 0.897 | 169 | 0.976 | 214 | 0.942 | 259 | 0.993 | 304 | 0.840 | 349 | 0.749 |
| 35 | 0.642 | 80 | 0.634 | 125 | 0.903 | 170 | 0.975 | 215 | 0.943 | 260 | 0.992 | 305 | 0.837 | 350 | 0.748 |
| 36 | 0.639 | 81 | 0.638 | 126 | 0.909 | 171 | 0.973 | 216 | 0.945 | 261 | 0.990 | 306 | 0.834 | 351 | 0.747 |
| 37 | 0.636 | 82 | 0.642 | 127 | 0.914 | 172 | 0.971 | 217 | 0.946 | 262 | 0.988 | 307 | 0.831 | 352 | 0.745 |
| 38 | 0.633 | 83 | 0.645 | 128 | 0.920 | 173 | 0.969 | 218 | 0.948 | 263 | 0.985 | 308 | 0.829 | 353 | 0.744 |
| 39 | 0.630 | 84 | 0.649 | 129 | 0.926 | 174 | 0.968 | 219 | 0.949 | 264 | 0.983 | 309 | 0.826 | 354 | 0.742 |
| 40 | 0.627 | 85 | 0.653 | 130 | 0.931 | 175 | 0.966 | 220 | 0.951 | 265 | 0.980 | 310 | 0.824 | 355 | 0.741 |
| 41 | 0.624 | 86 | 0.658 | 131 | 0.936 | 176 | 0.964 | 221 | 0.953 | 266 | 0.978 | 311 | 0.821 | 356 | 0.739 |
| 42 | 0.622 | 87 | 0.662 | 132 | 0.941 | 177 | 0.962 | 222 | 0.955 | 267 | 0.975 | 312 | 0.819 | 357 | 0.738 |
| 43 | 0.619 | 88 | 0.667 | 133 | 0.945 | 178 | 0.960 | 223 | 0.957 | 268 | 0.972 | 313 | 0.816 | 358 | 0.736 |
| 44 | 0.617 | 89 | 0.671 | 134 | 0.950 | 179 | 0.959 | 224 | 0.959 | 269 | 0.969 | 314 | 0.814 | 359 | 0.735 |

This document contains proprietary and confidential information of Dielectric Communications and SPX Corporation. It is to be used solely for the purpose for which it is provided. No disclosure, reproduction, or use of this document or any part of it may be made without the written permission of Dielectric Communications or SPX Corporation.