

**AMENDMENT TO BPFT-20160729ACD
CORRECTING COORDINATES**

**W244CU (#139106)
250 MILE AM WAIVER MOVE TO
PITTSBURGH, PA AS A FILL-IN FOR
WJAS(AM) (#55705)**

The modified W244CU translator will rebroadcast WJAS(AM). The proposed facility is located **106.15 miles** from the licensed W244CU facility.

Distance between:

40 23 49. N Latitude, 79 57 33. W Longitude (Point 1)
As decimals: 40.3969444 Latitude, -79.9591667 Longitude

and

41 48 50. N Latitude, 79 10 4. W Longitude (Point 2)
As decimals: 41.8138889 Latitude, -79.1677778 Longitude

Distance = 170.824 km (106.145 miles)

via the method in Sections 73.208 and 73.611(d)

This method is only suitable for distances up to 475 km (295 miles).

Azimuth, Point 1 to Point 2: 22.56 ° True

Azimuth, Point 2 to Point 1: 203.08° True

Allocation analyses:

A channel study is included as E1 demonstrating compliance with §74.1204 with the exception of 2nd adjacent channel stations WOGI and WOGH. A plot of the proposed 60 dBu contour is provided as E2 showing that it is entirely contained within primary station WJAS(AM)'s 2 mV/m and 40 km radius.

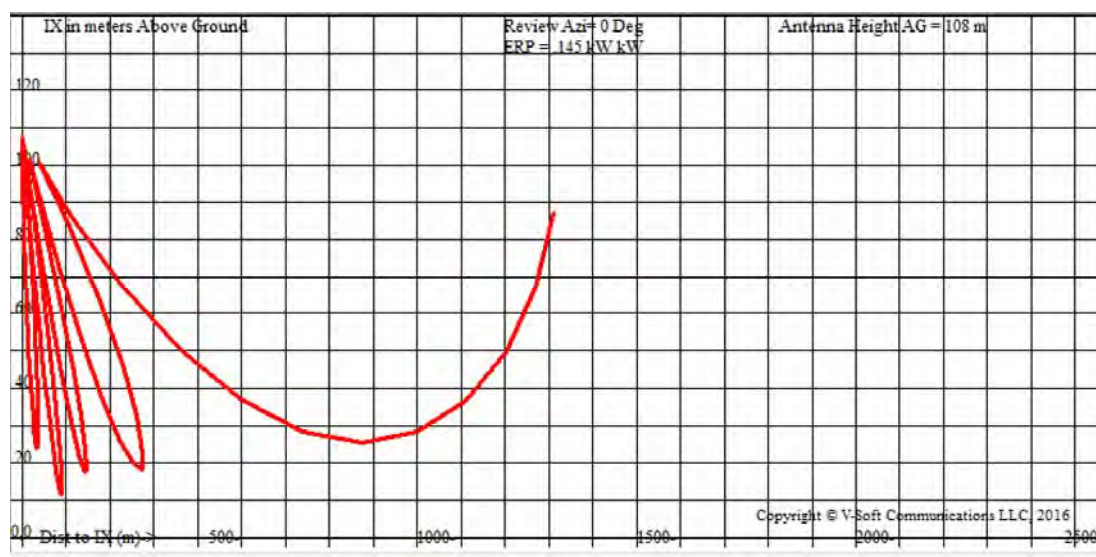
All exhibits utilize the V-Soft NGDC 30 second database.

- E1 Channel study
- E1A Interference plot to co-channel WLSW
- E1B WOGH interference disproval
- E1C WOGI interference disproval
- E1D Aerial photographs
- E1E DA horizontal and vertical elevation tabulations
- E2 60 dBu and 2 mV/m contours
- E3 ASR

The proposed facility will be located inside the protected contours of WOGH on 278B and WOGI on 282B. Interference analysis have been conducted based on the U/D ratio of +40 dB at the proposed site and the vertical elevation pattern of the proposed PSI FML-6 80% spaced antenna.

WOGH places a 56.58 dBu (50:50) contour at the site. The resulting 96.58 dBu (50:10) interference contour clears the ground by at least 10.9 meters in the first 285 meters from the site and 24.8 meters beyond that radius (E1B). The tallest buildings within the entire contour are two stories with the exception of a three story school located at 630-780 meters at azimuths 300-305 degrees True. At that distance the minimum interference contour clearance is 24.8 meters (E1B). Aerial and street level views are included as E1D.

WOGH 96.58 dBu contour vertical clearance graph:



WOGI places a 61.44 dBu (50:50) contour at the site and the 101.44 dBu (50:10) contour clears the ground by at least 60.8 meters (see E1C).

It is clear from exhibits E1B, E1C and E1D that the interference contour will not reach any populated area or major highways. Based on this showing, a waiver of Section 74.1204 is requested in accordance with *Living Way Ministries, Inc.* (FCC 08-242).

RF Exposure Calculation:

The proposed facility will utilize a 6 bay 80% spaced PSI FML, circularly polarized antenna with a center of radiation at 108 meters above ground (ASR#1026283). The RF level was evaluated using FMMODEL to be 0.008 $\mu\text{Watts/cm}^2$ or 0.004% of the maximum permissible 200 microwatts/cm² exposure for general population/uncontrolled exposure, and well below the 5% of that limit which requires consideration.

E1 CHANNEL STUDY

REFERENCE		CH#	280D - 103.9 MHz, Pwr= 0.145 kw DA, HAAT= 145.3 M, COR= 450 M					DISPLAY DATES			
40 23 49.0 N.			Average Protected F(50-50)= 13.53 km					DATA 08-26-16			
79 57 33.0 W.			Standard Directional					SEARCH 08-26-16			
CH	CALL	TYPE	ANT	AZI	DIST	LAT	PWR(kw)	INT(km)	PRO(km)	*IN*	*OUT*
CITY		STATE		<--	FILE #	LNG	HAAT(M)	COR(M)	LICENSEE	(Overlap in km)	
280D	W244CU	APP DC_		90.0	0.21	40 23 49.0	0.145	44.4	13.2	-59.3*	-62.1*
Pittsburgh		PA		270.0	BPFT20160729ACD	79 57 24.0		450	Radio Partners, Llc		
280A	WLSW	LIC _CN		138.4	56.75	40 00 51.0	0.320	77.6	26.3	-29.7*	9.4
Scottdale		PA		318.7	BLH5328	79 31 01.0	238	719	Sharon Wall As Administrat		
282B	WOGI	LIC NCX		298.6	44.39	40 35 14.0	13.000	4.9	59.9	24.1	-17.1* (1)
Moon Township		PA		118.3	BLH20071003AAS	80 25 15.0	219	549	Fm Radio Licenses, Llc		
280A	WWIZ	RSV-A _		339.4	96.01	41 12 16.0	6.000	90.0	29.9	-9.5	20.7
West Middlesex		PA		159.1		80 21 49.0	100	441	Cumulus Licensing Llc		
280A	WWIZ	LIC _CX		339.4	96.01	41 12 16.0	6.000	88.4	28.6	-7.9	21.9
West Middlesex		PA		159.1	BLH20131127BKY	80 21 49.0	89	431	Cumulus Licensing Llc		
278B	WOGH	LIC _CX		264.0	56.34	40 20 33.0	19.500	5.3	61.8	37.7	-7.1* (2)
Burgettstown		PA		83.6	BLH20040823AAU	80 37 14.0	247	561	Fm Radio Licenses, Llc		
280D	W280EW	CP DV_		241.5	77.38	40 03 42.9	0.250	49.1	14.5	15.5	17.5
Wheeling		WV		61.0	BMPFT20160129AHC	80 45 30.0		463	Capstar Tx, Llc		
281D	W281AG	LIC _C_		194.3	60.43	39 52 12.0	0.010	11.6	8.2	36.8	36.3
Waynesburg		PA		14.1	BLFT20070227ACK	80 08 01.0	180	535	Broadcast Communications,		
281D	W281AI	LIC _C_		103.9	61.95	40 15 40.0	0.013	10.2	6.9	37.3	40.5
Ligonier		PA		284.3	BLFT20070129APG	79 15 01.0	17	505	Pittsburgh Community Broad		
281A	WPXZ-FM	LIC _CN		51.9	102.12	40 57 36.0	3.000	43.8	28.6	44.9	53.9
Punxsutawney		PA		232.5	BMLH19980403KF	79 00 08.0	90	559	Renda Radio Inc.		
279L1	WFSJ-LP	LIC _N		69.5	72.67	40 37 23.0	0.052			51.7	45.6
Indiana		PA		250.0	BLL20041228AAA	79 09 09.0	41	426	Godstock Ministries		

Terrain database is NGDC 30 SEC , R= 73.215 qualifying spacings or FCC minimum Spacings in KM, M= Margin in KM
In & Out distances between contours are shown at closest points. Reference zone= East Zone, Co to 3rd adjacent.
All separation margins (if shown) include rounding. Call signs with strikeout need not be protected.
Ant Column: (D= DA Standard, Z= DA 73.215, N= Not DA 73.215, _= Omni), Polarization (C,H,V,E), Beamtilt(Y,N,X)
"*"affixed to 'IN' or 'OUT' values = site inside restricted contour.
Reference station has protected zone issue: AM tower

(1) See E1C and E1D for interference disproval per Living Way.

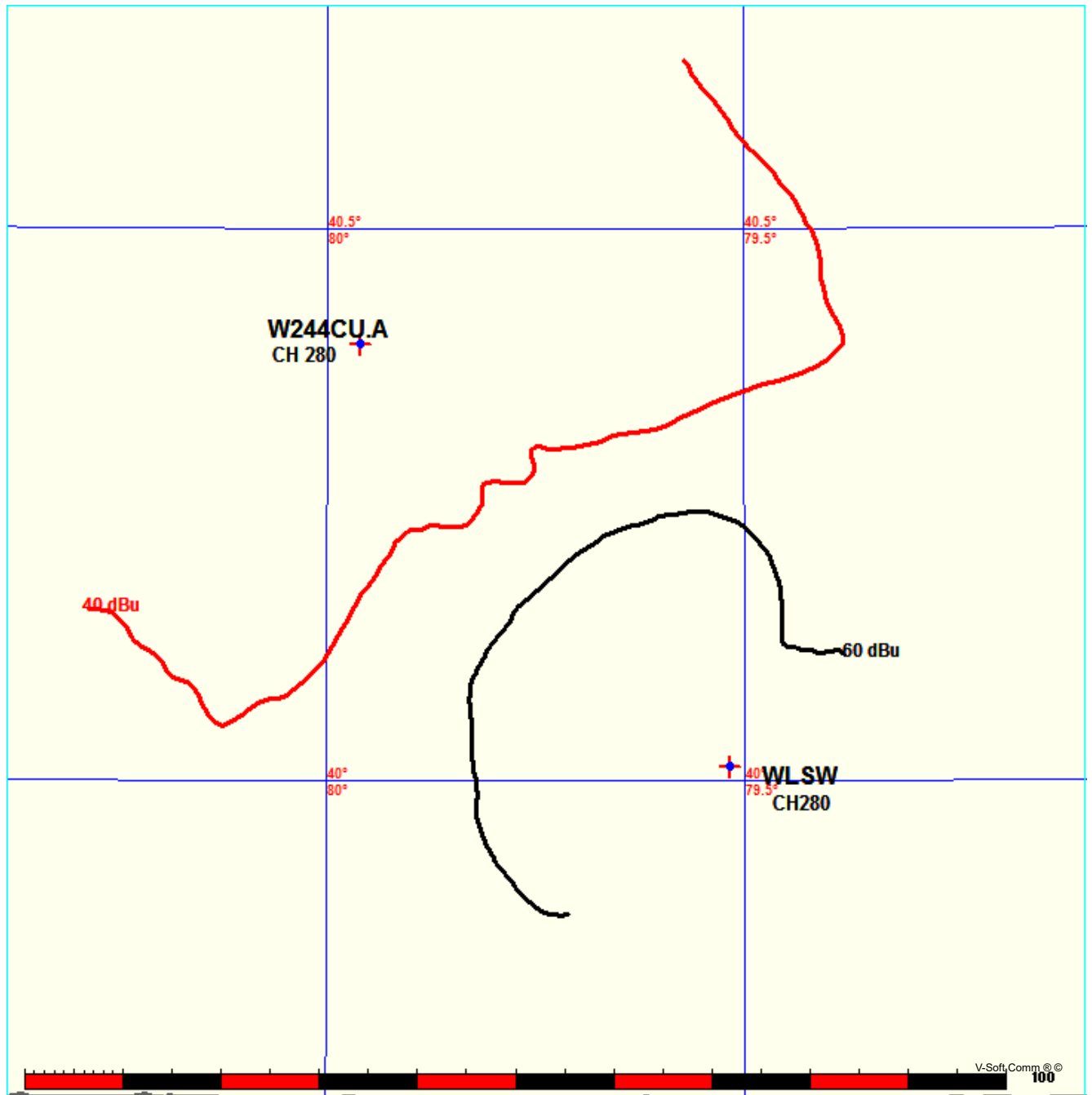
(2) See E1B and E1D for interference disproval per Living Way.

E1A W244CU - WLSW PLOT

FMCommander Single Allocation Study - 08-26-2016 - NGDC 30 SEC
W244CU.A's Overlaps (In= -29.7 km, Out= 9.4 km)

W244CU.A CH 280 D DA
Lat= 40 23 49.0, Lng= 79 57 33.0
0.145 kW 145.3 m HAAT, 450 m COR
Prot.= 60 dBu, Intef.= 40 dBu

WLSW CH 280 A BLH5328
Lat= 40 00 51.0, Lng= 79 31 01.0
0.32 kW 238 m HAAT, 719 m COR
Prot.= 60 dBu, Intef.= 40 dBu



E1B WOGH INTERFERENCE DISPROVAL

W244CU PITTSBURGH, PA

74.1204(d) Showing

Translator or LPFM Maximum Licensed ERP = 0.145

Translator or LPFM Antenna Height AG = 108 Meters

W244CU Antenna Model = PSI FML-6 80% SPACING

Protected Station's Contour = 56.57585 dBu

Translator's or LPFM's full Interference contour 96.57585

Review Azimuth = 0 Degrees True

Relative Field on the horizon at Review Azimuth = 1.000

Translator/LPFM ERP on the horizon at Review Azimuth = 0.145 kW

Distance between stations = 56.3 km

Protected Station= WOGH, 19.5 kW, 561 M Meters COR AMSL

Depression Angle From Horizon(Deg)	Vertical Relative Field	Horizontal Relative Field	ERP (kw)	Dist to IX Contour Along Dep. Angle(m)	Dist to IX Contour From Tower Base(m)	Height IX Above Ground (m)
00.00	1.00	1.0	0.1450	1252.8281	1252.8281	108.000
01.00	0.987	1.0	0.1413	1236.5414	1236.3530	086.419
02.00	0.954	1.0	0.1320	1195.1980	1194.4700	066.288
03.00	0.899	1.0	0.1172	1126.2925	1124.7489	049.054
04.00	0.825	1.0	0.0987	1033.5832	1031.0654	035.901
05.00	0.736	1.0	0.0785	922.0815	918.5727	027.635
06.00	0.635	1.0	0.0585	795.5459	791.1878	024.843 (1)
07.00	0.525	1.0	0.0400	657.7347	652.8321	027.842
08.00	0.411	1.0	0.0245	514.9124	509.9013	036.338
09.00	0.298	1.0	0.0129	373.3428	368.7463	049.596
10.00	0.19	1.0	0.0052	238.0373	234.4210	066.665
11.00	0.091	1.0	0.0012	114.0074	111.9127	086.246
12.00	0.031	1.0	0.0001	038.8377	037.9890	099.925
13.00	0.087	1.0	0.0011	108.9960	106.2025	083.481
14.00	0.147	1.0	0.0031	184.1657	178.6952	063.446
15.00	0.192	1.0	0.0053	240.5430	232.3467	045.743
16.00	0.221	1.0	0.0071	276.8750	266.1494	031.683
17.00	0.234	1.0	0.0079	293.1618	280.3520	022.288
18.00	0.233	1.0	0.0079	291.9090	277.6219	017.795
19.00	0.218	1.0	0.0069	273.1165	258.2368	019.082
20.00	0.193	1.0	0.0054	241.7958	227.2138	025.301
21.00	0.159	1.0	0.0037	199.1997	185.9689	036.613
22.00	0.12	1.0	0.0021	150.3394	139.3922	051.682
23.00	0.078	1.0	0.0009	097.7206	089.9523	069.818
24.00	0.036	1.0	0.0002	045.1018	041.2026	089.655
25.00	0.014	1.0	0.0000	017.5396	015.8963	100.587
26.00	0.047	1.0	0.0003	058.8829	052.9236	082.187
27.00	0.08	1.0	0.0009	100.2262	089.3022	062.498
28.00	0.106	1.0	0.0016	132.7998	117.2552	045.654
29.00	0.125	1.0	0.0023	156.6035	136.9685	032.077
30.00	0.136	1.0	0.0027	170.3846	147.5574	022.808
31.00	0.14	1.0	0.0028	175.3959	150.3437	017.664
32.00	0.137	1.0	0.0027	171.6374	145.5568	017.046
33.00	0.128	1.0	0.0024	160.3620	134.4909	020.661
34.00	0.113	1.0	0.0019	141.5696	117.3665	028.835
35.00	0.093	1.0	0.0013	116.5130	095.4419	041.171
36.00	0.071	1.0	0.0007	088.9508	071.9627	055.716
37.00	0.046	1.0	0.0003	057.6301	046.0254	073.317
38.00	0.021	1.0	0.0001	026.3094	020.7321	091.802
39.00	0.004	1.0	0.0000	005.0113	003.8945	104.846
40.00	0.027	1.0	0.0001	033.8264	025.9125	086.257
41.00	0.049	1.0	0.0003	061.3886	046.3305	067.725

E1B WOGH CONTINUED

42.00	0.067	1.0	0.0007	083.9395	062.3792	051.834
43.00	0.082	1.0	0.0010	102.7319	075.1334	037.937
44.00	0.094	1.0	0.0013	117.7658	084.7137	026.193
45.00	0.102	1.0	0.0015	127.7885	090.3601	017.640
46.00	0.105	1.0	0.0016	131.5470	091.3802	013.373
47.00	0.106	1.0	0.0016	132.7998	090.5692	010.876
48.00	0.102	1.0	0.0015	127.7885	085.5072	013.035
49.00	0.096	1.0	0.0013	120.2715	078.9052	017.230
50.00	0.088	1.0	0.0011	110.2489	070.8666	023.544
51.00	0.077	1.0	0.0009	096.4678	060.7091	033.030
52.00	0.065	1.0	0.0006	081.4338	050.1357	043.829
53.00	0.051	1.0	0.0004	063.8942	038.4525	056.972
54.00	0.037	1.0	0.0002	046.3546	027.2466	070.498
55.00	0.024	1.0	0.0001	030.0679	017.2462	083.370
56.00	0.011	1.0	0.0000	013.7811	007.7063	096.575
57.00	0.009	1.0	0.0000	011.2755	006.1411	098.544
58.00	0.019	1.0	0.0001	023.8037	012.6141	087.813
59.00	0.03	1.0	0.0001	037.5848	019.3576	075.784
60.00	0.04	1.0	0.0002	050.1131	025.0566	064.601
61.00	0.049	1.0	0.0003	061.3886	029.7618	054.308
62.00	0.056	1.0	0.0005	070.1584	032.9374	046.054
63.00	0.063	1.0	0.0006	078.9282	035.8326	037.674
64.00	0.067	1.0	0.0007	083.9395	036.7966	032.556
65.00	0.07	1.0	0.0007	087.6980	037.0628	028.519
66.00	0.072	1.0	0.0008	090.2036	036.6891	025.595
67.00	0.073	1.0	0.0008	091.4565	035.7349	023.814
68.00	0.073	1.0	0.0008	091.4565	034.2602	023.203
69.00	0.072	1.0	0.0008	090.2036	032.3261	023.788
70.00	0.07	1.0	0.0007	087.6980	029.9945	025.591
71.00	0.067	1.0	0.0007	083.9395	027.3280	028.634
72.00	0.064	1.0	0.0006	080.1810	024.7773	031.743
73.00	0.06	1.0	0.0005	075.1697	021.9775	036.115
74.00	0.056	1.0	0.0005	070.1584	019.3383	040.559
75.00	0.052	1.0	0.0004	065.1471	016.8613	045.073
76.00	0.048	1.0	0.0003	060.1358	014.5482	049.651
77.00	0.044	1.0	0.0003	055.1244	012.4003	054.288
78.00	0.04	1.0	0.0002	050.1131	010.4191	058.982
79.00	0.036	1.0	0.0002	045.1018	008.6058	063.727
80.00	0.032	1.0	0.0001	040.0905	006.9616	068.519
81.00	0.028	1.0	0.0001	035.0792	005.4876	073.353
82.00	0.024	1.0	0.0001	030.0679	004.1846	078.225
83.00	0.021	1.0	0.0001	026.3094	003.2063	081.887
84.00	0.017	1.0	0.0000	021.2981	002.2263	086.819
85.00	0.014	1.0	0.0000	017.5396	001.5287	090.527
86.00	0.011	1.0	0.0000	013.7811	000.9613	094.252
87.00	0.008	1.0	0.0000	010.0226	000.5245	097.991
88.00	0.005	1.0	0.0000	006.2641	000.2186	101.740
89.00	0.003	1.0	0.0000	003.7585	000.0656	104.242
90.00	0.001	1.0	0.0000	001.2528	000.0000	106.747

(2)

(1) The tallest building in this zone is 11 meters.

(2) The tallest buildings in this zone (0-258m) are two story houses.

E1C WOGI INTERFERENCE DISPROVAL

W244CU PITTSBURGH, PA

74.1204(d) Showing

Translator or LPFM Maximum Licensed ERP = 0.145

Translator or LPFM Antenna Height AG = 108 Meters

W244CU Antenna Model = PSI FML-6 80% SPACING

Protected Station's Contour = 61.44391 dBu

Translator's or LPFM's full Interference contour 101.44391

Review Azimuth = 0 Degrees True

Relative Field on the horizon at Review Azimuth = 1.000

Translator/LPFM ERP on the horizon at Review Azimuth = 0.145 kW

Distance between stations = 44.4 km

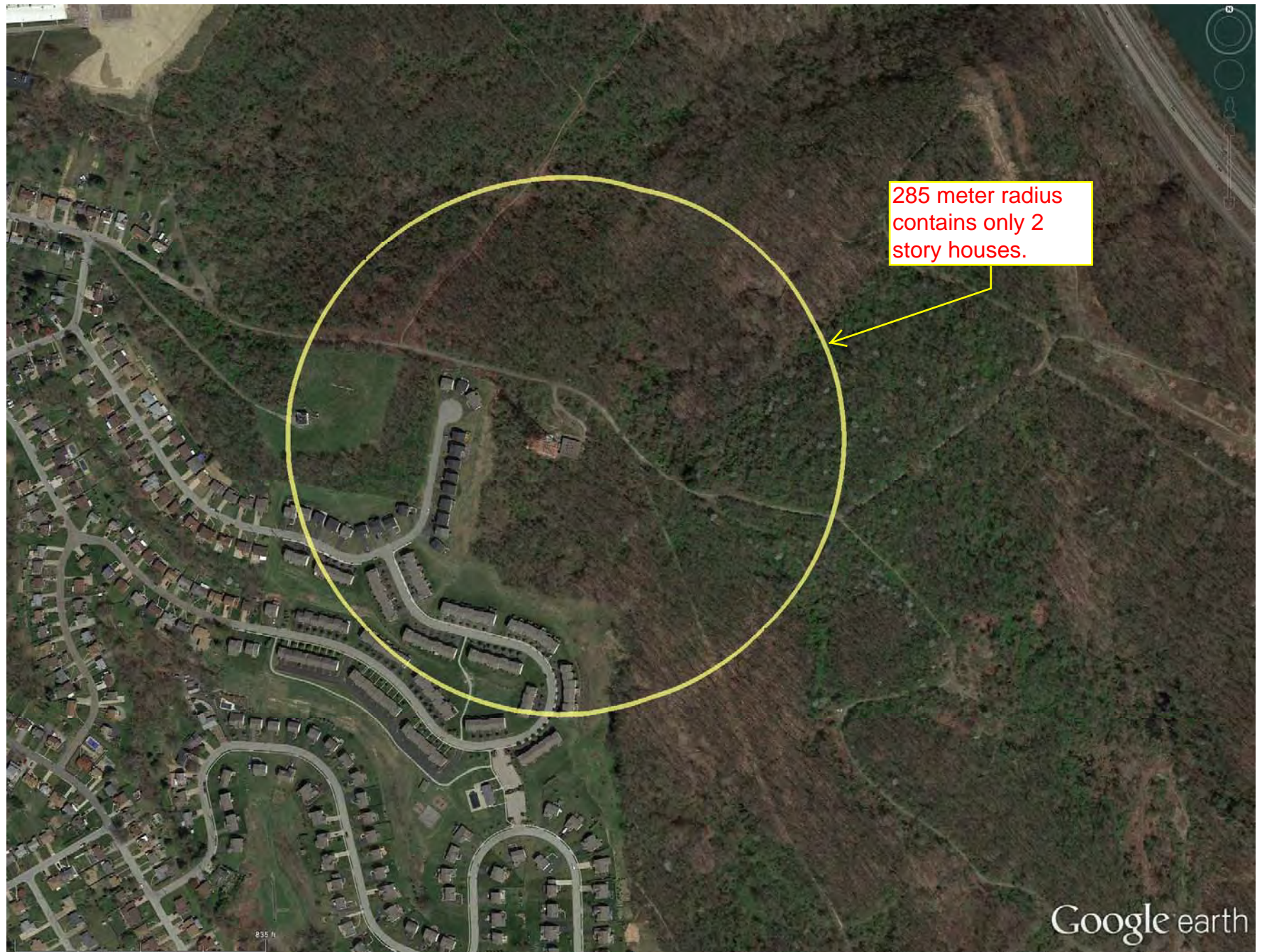
Protected Station= WOGI, 13 kW, 549 M Meters COR AMSL

Depression Angle From Horizon(Deg)	Vertical Relative Field	Horizontal Relative Field	ERP (kw)	Dist to IX Contour Along Dep. Angle(m)	Dist to IX Contour From Tower Base(m)	Height IX Above Ground (m)
00.00	1.00	1.0	0.1450	715.3005	715.3005	108.000
05.00	0.736	1.0	0.0785	526.4611	524.4578	062.116
10.00	0.19	1.0	0.0052	135.9071	133.8424	084.400
15.00	0.192	1.0	0.0053	137.3377	132.6580	072.454
20.00	0.193	1.0	0.0054	138.0530	129.7274	060.783
25.00	0.014	1.0	0.0000	010.0142	009.0760	103.768
30.00	0.136	1.0	0.0027	097.2809	084.2477	059.360
35.00	0.093	1.0	0.0013	066.5229	054.4924	069.844
40.00	0.027	1.0	0.0001	019.3131	014.7947	095.586
45.00	0.102	1.0	0.0015	072.9606	051.5910	056.409
50.00	0.088	1.0	0.0011	062.9464	040.4612	059.780
55.00	0.024	1.0	0.0001	017.1672	009.8467	093.937
60.00	0.04	1.0	0.0002	028.6120	014.3060	083.221
65.00	0.07	1.0	0.0007	050.0710	021.1609	062.620
70.00	0.07	1.0	0.0007	050.0710	017.1253	060.949
75.00	0.052	1.0	0.0004	037.1956	009.6269	072.072
80.00	0.032	1.0	0.0001	022.8896	003.9747	085.458
85.00	0.014	1.0	0.0000	010.0142	000.8728	098.024
90.00	0.001	1.0	0.0000	000.7153	000.0000	107.285

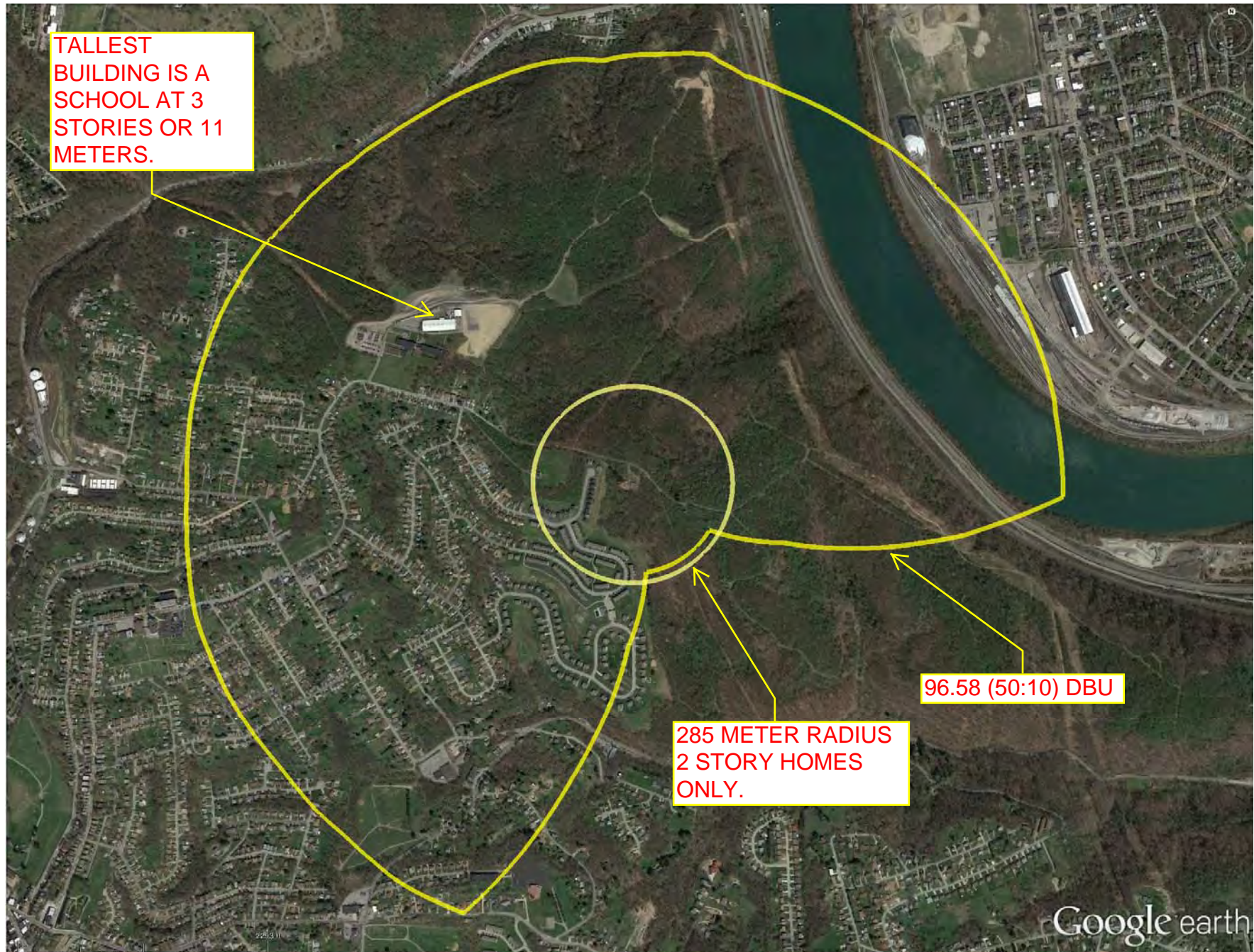
X-Field™ By V-Soft

Communications®LLC

E1D AERIAL VIEW OF 285 METER RADIUS OF PROPOSED SITE



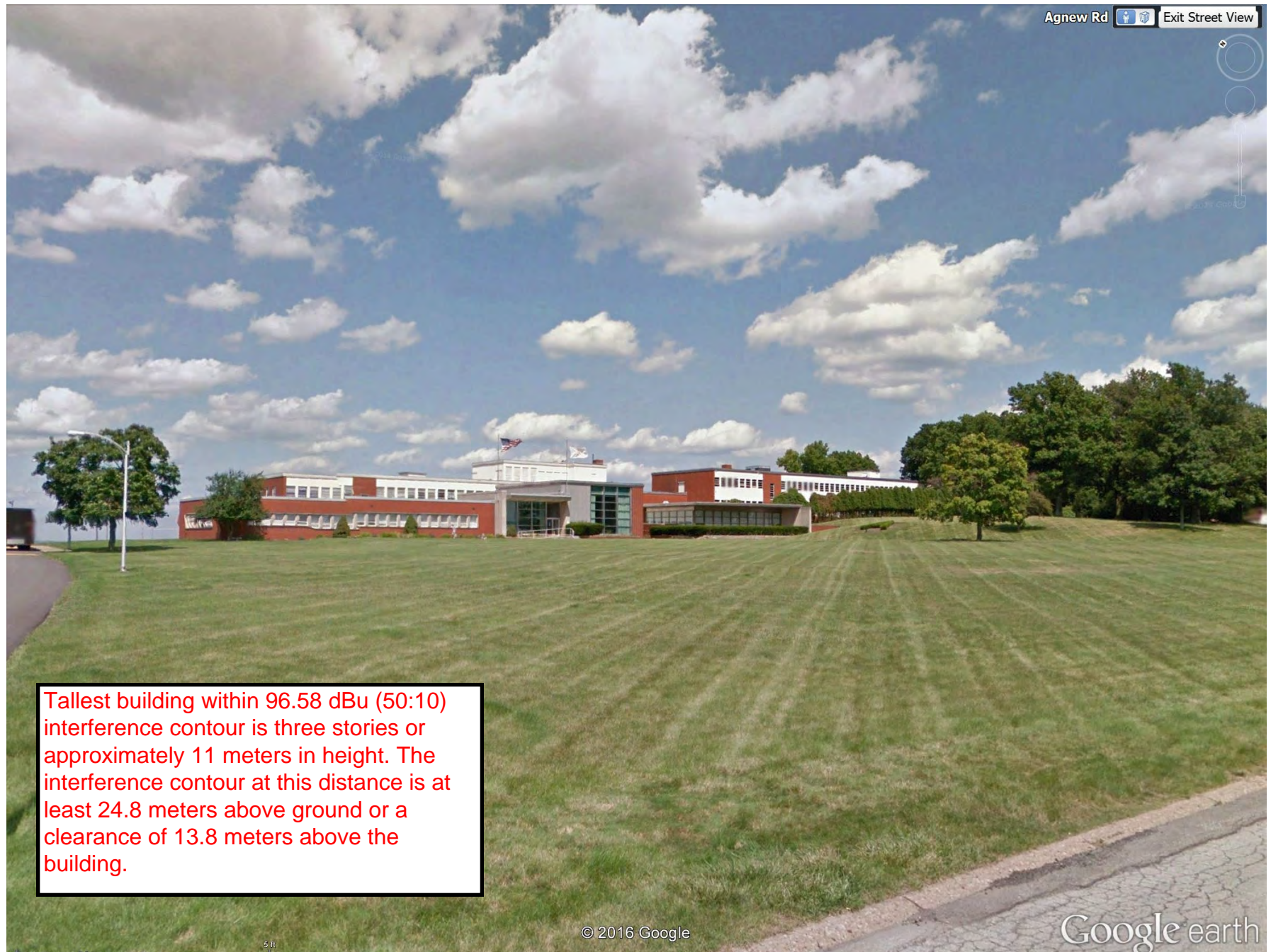
E1D AERIAL VIEW OF INTERFERENCE CONTOUR



E1D STREET VIEW OF TALLEST HOMES WITHIN 285 METERS



E1D STREET VIEW OF TALLEST BUILDING WITHIN INTERFERENCE CONTOUR



Tallest building within 96.58 dBu (50:10) interference contour is three stories or approximately 11 meters in height. The interference contour at this distance is at least 24.8 meters above ground or a clearance of 13.8 meters above the building.

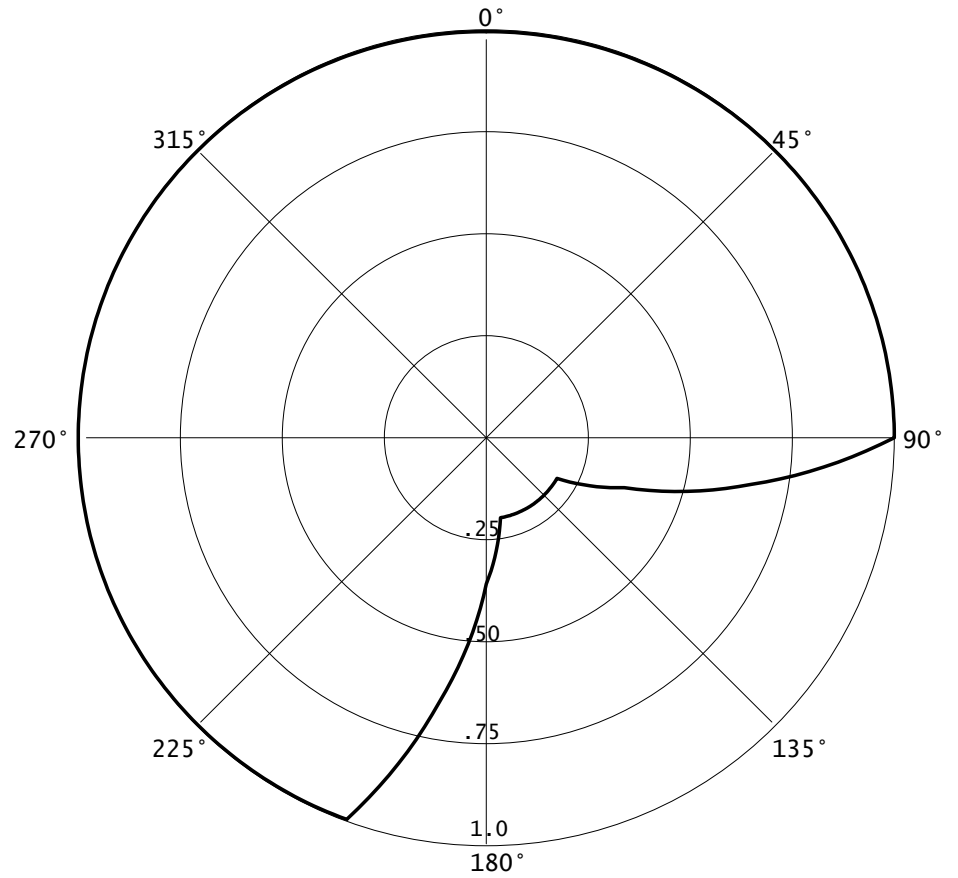
E1E W244CU DA

07-28-2016

RMS(V)= .871

Graph is Relative Field

Azi	Field	dBk	kw
000	1.000	-08.386	0.145
010	1.000	-08.386	0.145
020	1.000	-08.386	0.145
030	1.000	-08.386	0.145
040	1.000	-08.386	0.145
050	1.000	-08.386	0.145
060	1.000	-08.386	0.145
070	1.000	-08.386	0.145
080	1.000	-08.386	0.145
090	1.000	-08.386	0.145
100	0.660	-11.995	0.063
110	0.360	-17.260	0.019
120	0.200	-22.366	0.006
130	0.200	-22.366	0.006
140	0.200	-22.366	0.006
150	0.200	-22.366	0.006
160	0.200	-22.366	0.006
170	0.200	-22.366	0.006
180	0.360	-17.260	0.019
190	0.660	-11.995	0.063
200	1.000	-08.386	0.145
210	1.000	-08.386	0.145
220	1.000	-08.386	0.145
230	1.000	-08.386	0.145
240	1.000	-08.386	0.145
250	1.000	-08.386	0.145
260	1.000	-08.386	0.145
270	1.000	-08.386	0.145
280	1.000	-08.386	0.145
290	1.000	-08.386	0.145
300	1.000	-08.386	0.145
310	1.000	-08.386	0.145
320	1.000	-08.386	0.145
330	1.000	-08.386	0.145
340	1.000	-08.386	0.145
350	1.000	-08.386	0.145





Propagation Systems Inc.

Elevation Pattern Tabulation

Antenna: PSIFML-6-80WS

Angle	Field	dB	Angle	Field	dB	Angle	Field	dB
-90.0	0.001	-60.000	-50.0	0.088	-21.140	-10.0	0.190	-14.440
-89.0	0.003	-51.400	-49.0	0.096	-20.330	-9.0	0.298	-10.510
-88.0	0.005	-45.330	-48.0	0.102	-19.790	-8.0	0.411	-7.720
-87.0	0.008	-41.720	-47.0	0.106	-19.530	-7.0	0.525	-5.600
-86.0	0.011	-39.100	-46.0	0.105	-19.550	-6.0	0.635	-3.950
-85.0	0.014	-37.010	-45.0	0.102	-19.870	-5.0	0.736	-2.660
-84.0	0.017	-35.260	-44.0	0.094	-20.550	-4.0	0.825	-1.670
-83.0	0.021	-33.730	-43.0	0.082	-21.680	-3.0	0.899	-0.920
-82.0	0.024	-32.370	-42.0	0.067	-23.440	-2.0	0.954	-0.410
-81.0	0.028	-31.140	-41.0	0.049	-26.230	-1.0	0.987	-0.110
-80.0	0.032	-30.010	-40.0	0.027	-31.230	0.0	1.000	0.000
-79.0	0.036	-28.980	-39.0	0.004	-48.050	1.0	0.989	-0.100
-78.0	0.040	-28.030	-38.0	0.021	-33.540	2.0	0.954	-0.410
-77.0	0.044	-27.160	-37.0	0.046	-26.690	3.0	0.899	-0.920
-76.0	0.048	-26.360	-36.0	0.071	-23.000	4.0	0.826	-1.660
-75.0	0.052	-25.630	-35.0	0.093	-20.600	5.0	0.736	-2.660
-74.0	0.056	-24.980	-34.0	0.113	-18.960	6.0	0.635	-3.940
-73.0	0.060	-24.400	-33.0	0.128	-17.880	7.0	0.525	-5.590
-72.0	0.064	-23.900	-32.0	0.137	-17.250	8.0	0.412	-7.710
-71.0	0.067	-23.470	-31.0	0.140	-17.060	9.0	0.299	-10.500
-70.0	0.070	-23.140	-30.0	0.136	-17.310	10.0	0.190	-14.440
-69.0	0.072	-22.890	-29.0	0.125	-18.080	11.0	0.091	-20.830
-68.0	0.073	-22.750	-28.0	0.106	-19.520	12.0	0.031	-30.220
-67.0	0.073	-22.720	-27.0	0.080	-21.980	13.0	0.088	-21.140
-66.0	0.072	-22.820	-26.0	0.047	-26.480	14.0	0.148	-16.620
-65.0	0.070	-23.060	-25.0	0.014	-36.950	15.0	0.193	-14.310
-64.0	0.067	-23.470	-24.0	0.036	-28.930	16.0	0.222	-13.090
-63.0	0.063	-24.080	-23.0	0.078	-22.170	17.0	0.235	-12.590
-62.0	0.056	-24.960	-22.0	0.120	-18.400	18.0	0.233	-12.640
-61.0	0.049	-26.190	-21.0	0.159	-15.950	19.0	0.219	-13.200
-60.0	0.040	-27.910	-20.0	0.193	-14.290	20.0	0.194	-14.260
-59.0	0.030	-30.400	-19.0	0.218	-13.220	21.0	0.160	-15.920
-58.0	0.019	-34.340	-18.0	0.233	-12.670	22.0	0.120	-18.390
-57.0	0.009	-40.950	-17.0	0.234	-12.610	23.0	0.078	-22.160
-56.0	0.011	-39.060	-16.0	0.221	-13.120	24.0	0.036	-28.960
-55.0	0.024	-32.550	-15.0	0.192	-14.340	25.0	0.015	-36.690
-54.0	0.037	-28.540	-14.0	0.147	-16.650	26.0	0.048	-26.360
-53.0	0.051	-25.800	-13.0	0.087	-21.170	27.0	0.080	-21.900
-52.0	0.065	-23.790	-12.0	0.031	-30.220	28.0	0.107	-19.440
-51.0	0.077	-22.280	-11.0	0.091	-20.820	29.0	0.126	-18.010

W244CU
BLFT20120724AFM
Latitude: 40-23-49 N
Longitude: 079-57-33 W
ERP: 0.145 kW
Channel: 280
Frequency: 103.9 MHz
AMSL Height: 450.0 m
Elevation: 342.0 m
Horiz. Pattern: Directional

E2 CONTOURS

FCC 60 DBU

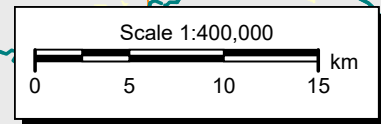
WJAS

Pittsburgh

W244CU

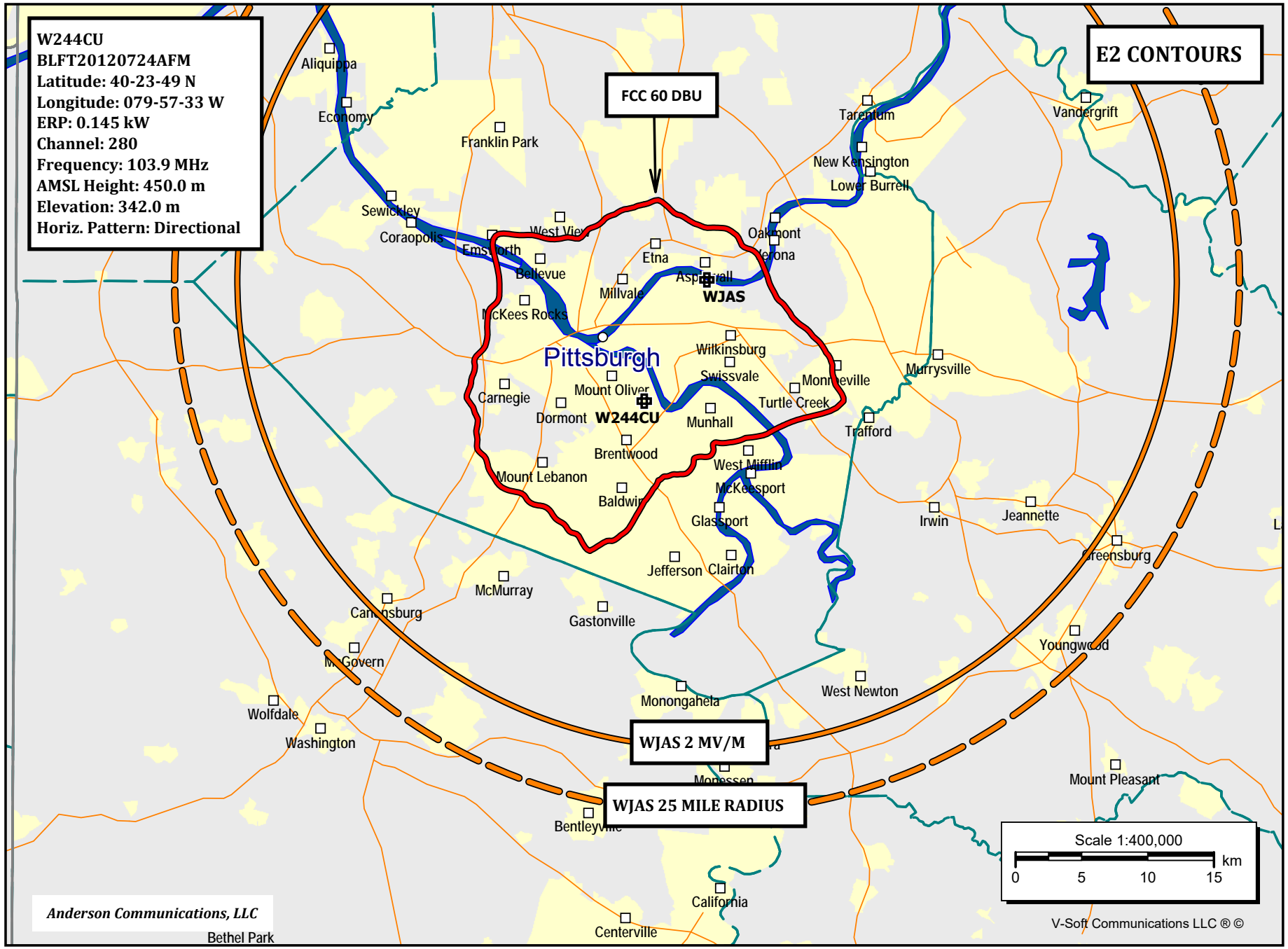
WJAS 2 MV/M

WJAS 25 MILE RADIUS



Anderson Communications, LLC
Bethel Park

V-Soft Communications LLC ©



E3 Registration 1026283

 [Map Registration](#)

Registration Detail

Reg Number	1026283	Status	Constructed
File Number	A0812716	Constructed	06/09/2011
EMI	No	Dismantled	
NEPA	No		

Antenna Structure

Structure Type LTOWER - Lattice Tower

Location (in NAD83 Coordinates)

Lat/Long	40-23-48.8 N 079-57-32.3 W	Address	1000 AGNEW AVE (088185)
City, State	Pittsburgh , PA		
Zip	15207	County	ALLEGHENY
Center of AM Array		Position of Tower in Array	

Heights (meters)

Elevation of Site Above Mean Sea Level	Overall Height Above Ground (AGL)
341.9	112.8
Overall Height Above Mean Sea Level	Overall Height Above Ground w/o Appurtenances
454.7	106.7

Painting and Lighting Specifications

FAA Chapters 4, 6, 13
Paint and Light in Accordance with FAA Circular Number 70/7460-1H

FAA Notification

FAA Study	2012-AEA-4403-OE	FAA Issue Date	11/30/2012
-----------	------------------	----------------	------------

Owner & Contact Information

FRN	0011498342	Owner Entity Type	Limited Liability Company
-----	------------	-------------------	---------------------------

Owner

American Towers, LLC.	P: (678)564-3236
Attention To: Regulatory Compliance	F:
10 Presidential Way	E: faa-fcc@americantower.com
Woburn , MA 01801	

Contact

Attention To: Regulatory Compliance	P: (678)564-3236
10 Presidential Way	F:
Woburn , MA 01801	E: faa-fcc@americantower.com

Last Action Status

Status	Constructed	Received	01/09/2013
Purpose	Notification	Entered	01/09/2013
Mode	Interactive		

Related Applications

01/09/2013	A0812716	- Notification (NT)
01/09/2013	A0812715	- Modification (MD)
01/03/2013	A0810813	- Notification (NT)

NADCON Program Version 2.11

Transformation #: 1 Region: Conus

Latitude

Longitude

NAD 27 datum values: 40 23 48.55049 79 57 33.11428 (1)

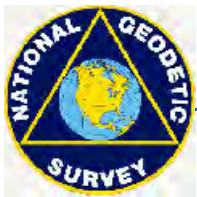
NAD 83 datum values: 40 23 48.80000 79 57 32.30000

NAD 27 - NAD 83 shift values: -0.24951 0.81428 (secs.)

-7.696 19.203 (meters)

Magnitude of total shift: 20.688 (meters)

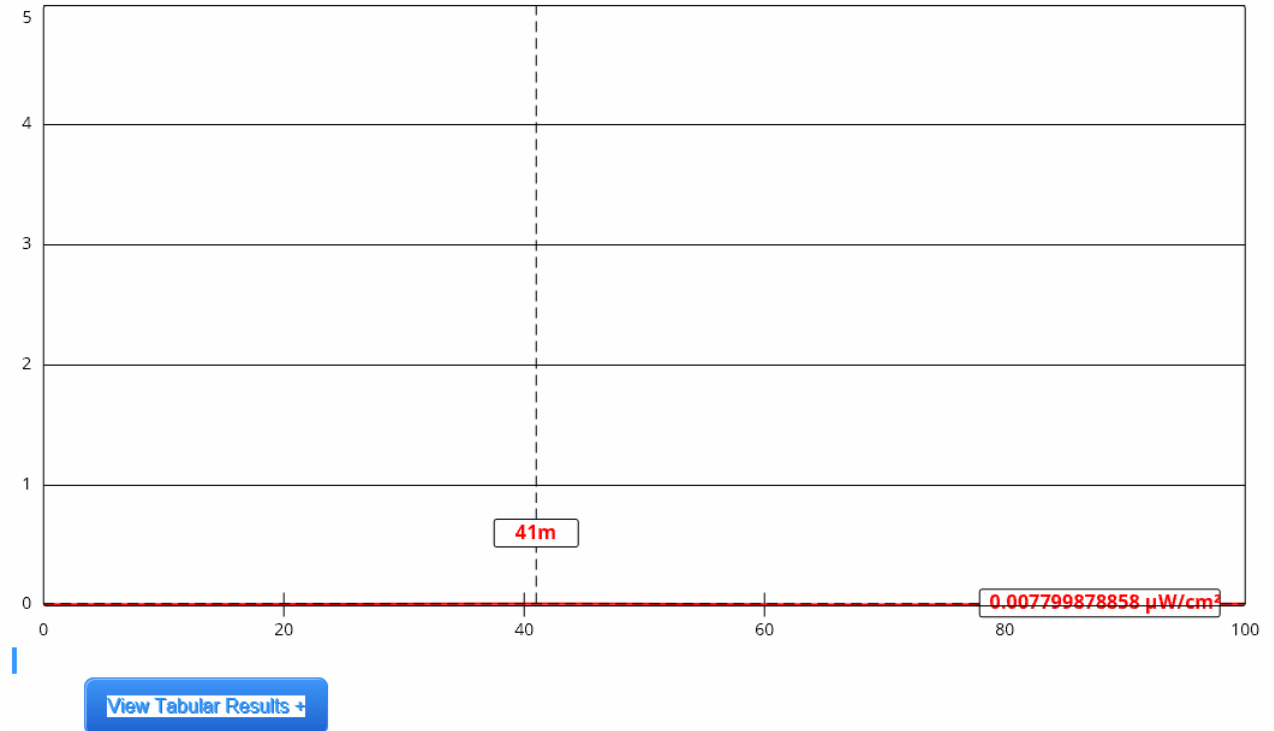
(1) Rounds to N 40-23-49 W 79-57-33 (NAD27)



NGS HOME PAGE

FMMODEL CALCULATION

The FM Model calculator determines the potential exposure from radiofrequency (RF) electromagnetic fields produced by FM broadcast station antennas at ground level. The FM Model software was originally developed by the FCC in 1997 as a standalone executable program and this improved version provides more precise predictions and runs via a JavaScript enabled web browser. The FM Model is originally based on measured data [published in 1985 by the EPA](#). [▼ Show More....](#)



Channel Selection	Channel 280 (103.9 MHz) ▼		
Antenna Type +	EPA Type 2: Opposed V Dipole ▼		
Height (m)	<input type="text" value="108"/>	Distance (m)	<input type="text" value="100"/>
ERP-H (W)	<input type="text" value="145"/>	ERP-V (W)	<input type="text" value="145"/>
Num of Elements	<input type="text" value="6"/>	Element Spacing (λ)	<input type="text" value="0.8"/>
Num of Points	<input type="text" value="500"/>	<input type="button" value="Apply"/>	