

Non-Interference Compliance

Regarding Facility id 145194

Channel 261

Description of Exhibit 13 Contents

This exhibit demonstrates that the proposed facility complies with contour overlap and interference protection provisions in all of the applicable rule sections and that this application for a construction permit is in full compliance with 47 C.F.R. § 74.1204.

Let it be noted that should any actual real world interference occur, the applicant acknowledges that it will promptly suspend operation of this translator in accordance with 47 C.F.R. § 74.1203.

Page 2 of this exhibit is an explanation of the method used to demonstrate compliance with contour overlap and interference provisions based on 47 C.F.R. § 74.1204(d), which states:

[A]n application otherwise precluded by this section will be accepted if it can be demonstrated that no actual interference will occur due to intervening terrain, lack of population or such other factors as may be applicable.

Page 3 of this exhibit contains the tabulated data from the interference analysis, which shows all stations whose protected contours come within 50 km of the 34 dBμ F(50,10) contour of the proposed translator. These tabulated values were calculated using data from the FCC's CDBS files and 30 arc second terrain data. The column labeled "Adj" shows the number of channels difference between the entry and the proposed translator. The column labeled "Dist" shows the distance in km. The column labeled "Overlap" shows the area of contour overlap in square kilometers.

Page 4 of this exhibit is a portion of a USGS 1:24,000 scale 7.5 minute quadrangle at full scale with the calculated area of interference overlaid. The sheet includes the quadrangle name and measurement scale at the bottom-left corner (note: "Mt" refers to meters). The area of interference was calculated using the free space equation and 120 radials.

Page 5 of this exhibit is an aerial photo of the vicinity surrounding the proposed translator's tower site.

Compliance with 47 C.F.R. § 74.1204(d)

All authorized second and third adjacent stations with which the proposed translator has contour overlap are tabulated below. Column four show the station's signal level at the proposed translator's tower site, and column five gives the minimum value within the entire standard interfering contour of the proposed translator (100 dBμ for most classes, 94 for class B, 97 for class B1). The minimum second or third adjacent F(50,50) contour within the proposed translator's standard interfering contour was used to calculate the proposed translator's actual "worst-case" interfering contour.

Application_id	File Number	Callsign	Contour at Tower	Min. Contour
1211855	BLFT20071022BEI	K262BM	71.4	71.4
1626448	BLFT20140224AAC	K266BR	85.5	83.6
1627878	BPFT20140304AAA	K266BR	84.4	82.6
Minimum F(50,50) Contour of Adjacent Station within Proposed Translator's Standard Interfering Contour				71.4

FCC 02-244 at Section II.A.5 states that "when demonstrating that 'no actual interference will occur due to . . . other factors,' pursuant to Section 74.1204(d), an applicant may use the undesired-to-desired signal ratio method." The undesired-to-desired ratio for second and third adjacent stations required by § 74.1204(a) is 40 dB. Since the minimum protected contour strength within the proposed translator's standard interference contour is **71.4 dBμ**, this makes the proposed translator's worst-case interfering contour **111.4 dBμ**. By the free-space equation, this contour is calculated to extend a maximum of **298.5 m** from the transmit antenna.

The interfering contour of the proposed translator was calculated for 120 radials and plotted on the pertinent portion of a USGS quadrangle (page 4 of this exhibit). As demonstrated on the quadrangle, there are no populated structures or highways within the area of interference (Note: FCC 02-244 at Section II.A.6 states that USGS quadrangles "have been recognized as acceptable to demonstrate lack of population").

Note: The only structures within the zone of predicted interference are unoccupied communications buildings so, in accordance with 47 C.F.R. § 74.1204(d) and the clarification provided by the FCC in the decision *Re: Living Way Ministries* (FCC 02-244), a lack of population has been demonstrated within the area of interference and this application is therefore in full compliance with 47 C.F.R. § 74.1204.

Antenna Manufacturer: BEX
Antenna Model: LOG-R @ 30°
CORAGL: 7 m
Maximum ERP: 0.25 kW
Interfering Contour: 111.4 dBμ
Max Int. Contour Distance: 298.5 m

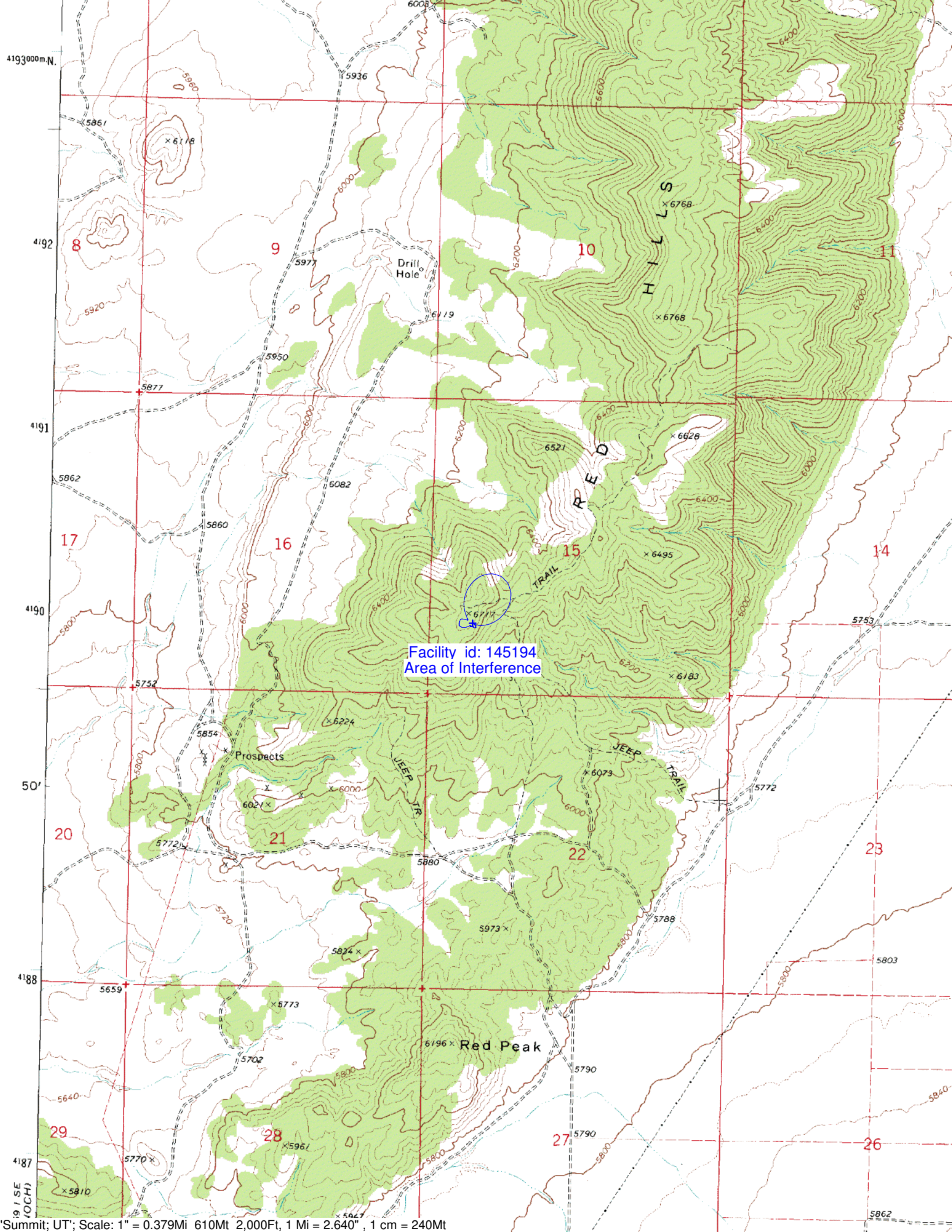
Adjacent Channel Study **For Station K261EN, Facility_id: 145194**

Co-channel through third adjacent:

App_id	Fac_id	File_Number	Call	Licensee	Class	City	State	Status	ERP	RCAMSL	Chan	Adj	Dist	Overlap
195670	51699	BLFT-19940310TC	K258AA	PAROWAN CITY CORPORATION	D	PAROWAN	UT	LIC	0.019	2067	258	3	0.4	0.3088
1227829	164258	BLH-20080122ADT	KMXD	SANPETE COUNTY BROADCASTI	C	MONROE	UT	LIC	33	3600	263	2	82.5	0.3088
1211855	141827	BLFT-20071022BEI	K262BM	BRIGHAM YOUNG UNIVERSITY	D	CEDAR CITY	UT	LIC	0.01	2671	262	1	23.1	0
1801485	201450	BLFT-20190307AAA	K264CT	TRI-STAR MEDIA, LLC	D	SANTA CLARA	UT	LIC	0.25	1630	264	3	66.9	0
76634	59041	BLFT-19850304TJ	K261BP	GARFIELD COUNTY	D	RURAL PIUTE, ET	UT	LIC	0.076	3433	261	0	110.3	0
1725736	141740	BLFT-20160405ABF	K264BM	BRIGHAM YOUNG UNIVERSITY	D	IVINS	UT	LIC	0.01	2278	264	3	110.7	0
1788173	58260	BPFT-20180813AAA	K231BP	CARL L. RIECK	D	ST. GEORGE	UT	CP	0.25	1896	258	3	119.4	0
1483476	18140	BLH-20120315AAA	KONY	CANYON MEDIA CORPORATION	C	ST. GEORGE	UT	LIC	89	1985	260	1	119.7	0
1047654	59031	BLFT-20050225ABM	K259AR	AIRFREE WIRELESS, INC.	D	FILLMORE, ETC.	UT	LIC	0.076	3128	259	2	130.3	0
1739962	59031	BPFT-20160927AEA	K259AR	AIRFREE WIRELESS, INC.	D	FILLMORE	UT	CP	0.25	3108	259	2	131	0

Intermediate Frequencies (53 and 54 channels difference):

App_id	Fac_id	File_Number	Call	Licensee	Class	City	State	Status	ERP	RCAMSL	Channel	Adj	Dist	Clr
1807307	69320	BPFT-20190828AAO	K211BJ	UNIVERSITY OF UTAH	D	TOQUERVILLE	UT	CP	0.25	1622	208	53	66.9	56.9
1404794	173336	BLED-20101210ALL	KUSL	UTAH STATE UNIVERSITY OF AG	C1	RICHFIELD	UT	LIC	2	3577	207	54	82.5	60.5



Facility id: 145194
Area of Interference

