

**ENGINEERING TECHNICAL STATEMENT PREPARED BY WILLIAM T. GODFREY OF THE FIRM KESSLER AND GEHMAN ASSOCIATES, INC., TELECOMMUNICATIONS CONSULTING ENGINEERS IN CONNECTION WITH THE GEORGIA PUBLIC TELECOMMUNICATIONS COMMISSION'S (GPTC) MINOR MODIFICATION OF CONSTRUCTION PERMIT APPLICATION TO CHANGE CHANNELS FROM WVAN-DT CHANNEL 46 TO WVAN-DT CHANNEL 13 AS AUTHORIZED BY THE FCC IN A REPORT & ORDER RELEASED AUGUST 9, 2002.**

The firm Kessler and Gehman Associates, Inc., (KGA) has been retained by the Georgia Public Telecommunications Commission (GPTC), Atlanta, Georgia in order to prepare engineering studies and the engineering portion of a minor modification of construction permit application to change channels from DTV Channel 46 to DTV Channel 13 as authorized by the FCC in a Report and Order released on August 9, 2002.

**Discussion**

On August 9<sup>th</sup> the FCC released a Report and Order stating that the public interest would be served by allotting DTV Channel \*13 in lieu of DTV Channel \*46 for WVAN-DT. In the Order, the FCC stated that the GPTC shall submit to the Commission a minor change application for a construction permit specifying DTV Channel \*13 in lieu of DTV Channel \*46 for station WVAN-DT. Accordingly, we are filing a minor modification of construction permit application for Channel 13 with one change from that what was filed in the petition for rule making (PFRM). The PFRM requested an effective radiated power (ERP) of 10.0 kW and this minor modification application is requesting an ERP of 20 kW. When the WVAN-DT Channel 13 PFRM was originally prepared, KGA was using reliable and FCC-compliant software to perform the Longley-Rice interference studies. Calculations initially demonstrated that the maximum ERP that the proposed WVAN-DT Channel 13 facility could operate at without causing above de minimis interference to applicable surrounding stations was 10.0 kW. KGA still uses the same software for initial studies but also uses the FCC's software on Sun Spark computers for final studies. The Sun Spark computer, loaded with the FCC's Longley-Rice interference study software, calculated that the proposed WVAN-DT Channel 13 facility could operate with an ERP of 20 kW without causing unacceptable interference to any applicable surrounding stations. Therefore, this minor modification to construction permit application requests permission to make the following changes: 1) change from DTV Channel 46 to DTV Channel 13 as authorized; and 2) change ERP from 10 kW to 20 kW.

**Interference Studies**

The Longley-Rice studies were performed using a Sun Microsystems SPARC 5 computer work station loaded with the FCC's TV Interference and Spacing Analysis software (See Exhibit 12).

Exhibit 12 depicts detailed Longley-Rice interference studies with WVAN-DT operating at the proposed ERP (20 kW). As you can see, the proposed WVAN-DT Channel 13 facility would not cause more than 2.0% interference to any station. Exhibit 12 demonstrates that there is no unacceptable interference to any applicable surrounding stations, including Class A stations. The W13CC Channel 13 Class A eligible station listed on Exhibit has voluntarily agreed to depart channel 13 for channel 46 and accordingly, should be ignored.

## **Exhibits**

Exhibits 1 and 2 represent WVAN-DT's administration data, antenna and antenna structure specifications as per §VII item 10 in the DTV Engineering Technical Specifications portion of the application regarding directional antennas and beam tilt.

Exhibit 3 depicts the profile view of the proposed antenna on the antenna structure with all the appropriate elevations as per §VII item 10 in the DTV Engineering Technical Specifications portion of the application regarding supporting structures and elevations.

Exhibits 4 and 5 display the azimuth pattern and the azimuth pattern tabulation respectively.

Exhibits 6 and 7 display the elevation pattern and the elevation pattern tabulation respectively.

Exhibits 8 and 9 display the ERP/dBk pattern and the ERP/dBk pattern tabulation respectively.

Exhibit 10 depicts the site location of the proposed WVAN-DT site on a 7.5-Minute (Series) Topographic Map as per §VII item 10 in the DTV Engineering Technical Specifications portion of the application regarding topographic maps.

Exhibit 11 depicts the proposed WVAN-DT coverage contour, boundaries of the principal community to be served, and the proposed transmitting location with radials every 45° as per §VII item 10 in the DTV Engineering Technical Specifications portion of the application regarding Sectional Aeronautical Charts.

Exhibit 12 (21 pages) contains detailed Longley-Rice interference studies using the proposed parameters for WVAN-DT Channel 13.

## **Environmental Impact**

The proposed construction will have no significant environmental impact as defined in §1.1307 of the FCC Rules. The DTV transmitter, 3-inch (50-ohm) transmission line and antenna system will produce an ERP of 20 kW. Assuming that the maximum lobe of radiation is oriented at the base of the tower, it will produce a power density six feet above the ground of  $0.009 \text{ mW/cm}^2$ . This is only 0.92% of the maximum permissible exposure (MPE) authorized by the American National Standards Institute (ANSI). Since the proposed operation of WVAN-DT Channel 13 will not exceed 5.0% of the MPE limit for population/uncontrolled at any point on the ground, WVAN-DT is not considered to be a "significant contributor" to the RF exposure environment pursuant to OET Bulletin 65, Edition 97-01. Therefore, contributions of exposure from other sources were not accounted for in this analysis. It is safe to conclude that the emissions will be insignificant and well within the maximum allowable requirements.

If other antennas are placed on the tower in the future, the applicant will cooperate with those users by reducing or completely terminating the power to the antenna when maintenance workers are in danger from the electromagnetic radiation emanating from the antenna. The tower will be enclosed within a fence with warning signs posted at the locked gate.

## **Certification**

The applicant accepts full responsibility for the elimination of any objectionable interference including that caused by intermodulation to facilities in existence or authorized prior to the grant of this application.

This technical statement was prepared by William T. Godfrey, Telecommunications Consultant with Kessler and Gehman Associates, Inc. having offices in Gainesville, Florida and has been working in the field of radio and television broadcast consulting since 1998. He graduated from the University of North Florida with a Bachelor of Arts degree in Criminal Justice and a minor in Mathematics and received a Commission in the Aviation Branch of the United States Army in 1993. As a Professional in the field of Telecommunications and as a Captain in the United States Army, he states under penalty of perjury that the information contained in this report is true and correct to the best of his knowledge and belief.



KESSLER AND GEHMAN ASSOCIATES, INC.

A handwritten signature in blue ink, reading 'William T. Godfrey', is written over a horizontal line. Below the line, the name 'WILLIAM T. GODFREY' and the title 'Telecommunications Consultant' are printed.

WILLIAM T. GODFREY  
Telecommunications Consultant

3 September, 2002

**WVAN-DT  
SAVANNAH, GA**

**ENGINEERING SPECIFICATIONS**

**A. Transmitter Site:**

Geographic coordinates:

North Latitude .....	32° 08' 48"
West Longitude .....	81° 37' 05"

Transmitter Site Address:   **100 Vandiver Street, Pembroke, GA 31321 (0.8 Miles NNE of Pembroke, GA)**

**B. Main Studio Site Address:   260  14<sup>th</sup> Street N.W., Atlanta, GA 30318.**

**C. Proposed Facility:**

DTV Channel	Number .....	13
	Frequency .....	210-216 MHz

**D. Antenna Height:**

Height of Site Above Mean Sea Level (AMSL).....	29.0 M
Overall Height of Structure Above Ground.....	331.0 M
(including all appurtenances)	
Overall Height of Structure Above Mean Sea Level.....	360.0 M
(including all appurtenances)	
Height of Site Above Average Terrain .....	4.9 M
Antenna Height Radiation Center (R/C) Above Ground .....	289.5 M
Antenna Height R/C Above Mean Sea Level .....	318.5 M
Average of All Non-Odd Radials.....	25.1 M
Antenna Height R/C Above Average Terrain .....	293.4 M

**E. System Parameters – Circular Polarization:**

Transmitter Power Required (Circular).....	3.03 kW
Maximum Power Input to Antenna .....	1.79 kW
Total System Loss .....	2.29 dB
Transmission Line Efficiency.....	59.0%
Maximum Antenna Gain in Beam Maximum .....	13.50 dB
Maximum Antenna Gain in Horizontal Plane.....	13.32 dB
Maximum Effective Radiated Power .....	13.0 dBk
In Beam Maximum .....	20.0 kW
Maximum Effective Radiated Power .....	12.8 dBk
In Horizontal Plane .....	19.2 kW

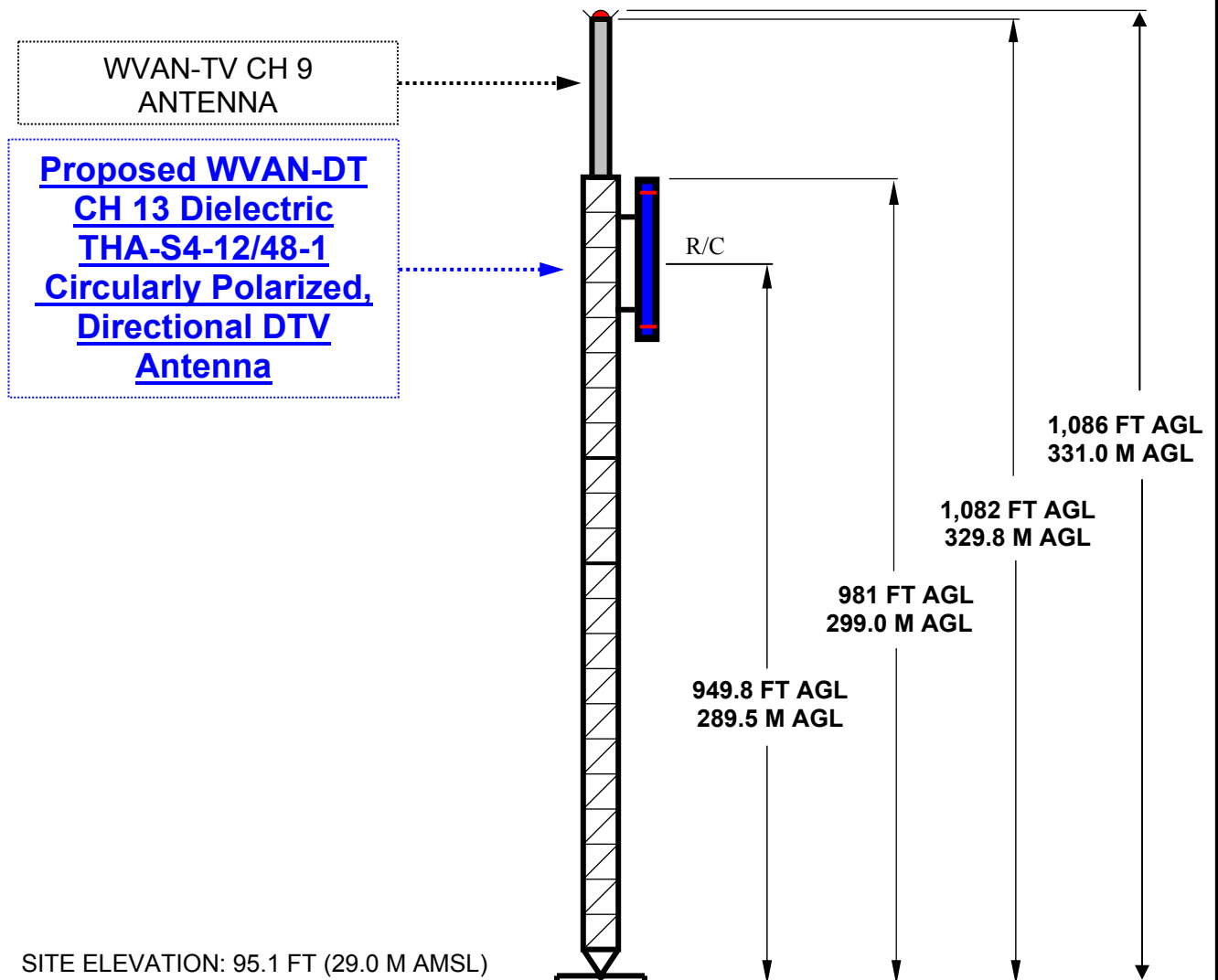
**WVAN-DT  
SAVANNAH, GA**

**DATA FOR PROPOSED DTV  
DIRECTIONAL TRANSMITTING ANTENNA**

- A. **Antenna:** Dielectric THA-S4-12/48-1, Circularly Polarized, Directional (Skull), Side-mount Antenna.
- B. **Electrical Beam Tilt:** 0.60°
- C. **Mechanical Beam Tilt:** None
- D. 

<b><u>Maximum Power Gain</u></b>	<b><u>Horizontal Polarization</u></b>
Maximum:	22.4 (13.50 dB)
Horizontal:	21.5 (13.32 dB)
- E. **Length:** 62.4 feet (19.0 meters) not including appurtenances.
- F. **Average Power DTV:** 3.03 kW
- G. **Null Fill:** 13.8%
- H. **Transmission Line:** 3-1/8" 50-ohm Heliax.
- I. **Transmission Line Loss:** 0.220 dB/100-feet
- J. **Total Transmission Line:** 1,040 feet
- K. **Transmission Line Attenuation:** 2.29 dB

## ANTENNA STRUCTURE ELEVATION VIEW



OVERALL HEIGHT AGL: 331.0 M  
OVERALL HEIGHT AMSL: 360.0 M  
RADIATION CENTER AGL: 289.5 M  
RADIATION CENTER AMSL: 318.5 M  
RADIATION CENTER HAAT: 293.4 M  
AVG OF ALL NON-ODD RADIALS: 25.1 M

**COORDINATES (NAD 27):**  
N. LATITUDE 32° 08' 48"  
W. LONGITUDE 81° 37' 05"  
Antenna Structure Registration Number:  
1018799

**NOTE: NOT TO SCALE**

**KESSLER & GEHMAN**  
TELECOMMUNICATIONS CONSULTING ENGINEERS  
507 N.W. 60th Street, Suite C  
Gainesville, Florida 32607

WVAN-DT CHANNEL 13  
SAVANNAH, GEORGIA  
20020903

EXHIBIT 3



Date  
Call Letters  
Location  
Customer  
Antenna Type

03 Sep 2002  
WVAN-DT  
Savannah, GA  
GPTC  
THA-S4-12/48-1

Channel 13

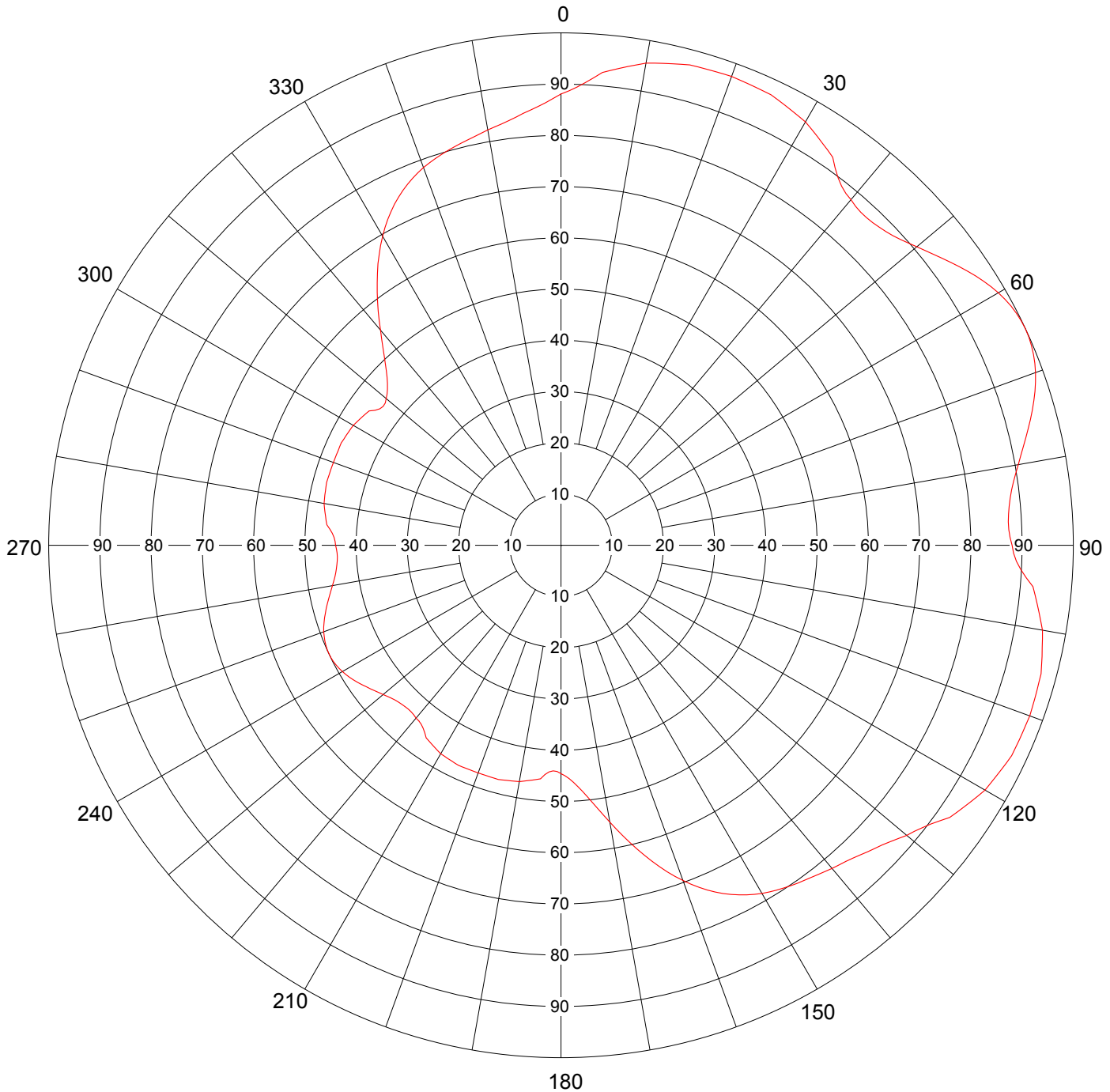
### AZIMUTH PATTERN

RMS Gain at Main Lobe  
Calculated / Measured

1.90 (2.79 dB)  
Calculated

Frequency  
Drawing #

213 MHz  
THA-S4



Remarks: Exhibit 4



Date **03 Sep 2002**  
 Call Letters **WVAN-DT** Channel **13**  
 Location **Savannah, GA**  
 Customer **GPTC**  
 Antenna Type **THA-S4-12/48-1**

## TABULATION OF AZIMUTH PATTERN

Azimuth Pattern Drawing # **THA-S4**

Angle	Field	Angle	Field	Angle	Field	Angle	Field	Angle	Field	Angle	Field	Angle	Field	Angle	Field
0	0.881	45	0.878	90	0.880	135	0.846	180	0.446	225	0.439	270	0.440	315	0.482
1	0.887	46	0.882	91	0.884	136	0.840	181	0.441	226	0.441	271	0.441	316	0.494
2	0.895	47	0.886	92	0.890	137	0.835	182	0.440	227	0.443	272	0.443	317	0.506
3	0.904	48	0.892	93	0.899	138	0.831	183	0.443	228	0.446	273	0.447	318	0.520
4	0.915	49	0.899	94	0.910	139	0.827	184	0.449	229	0.449	274	0.452	319	0.534
5	0.926	50	0.906	95	0.925	140	0.823	185	0.457	230	0.453	275	0.459	320	0.548
6	0.932	51	0.914	96	0.931	141	0.819	186	0.460	231	0.457	276	0.461	321	0.564
7	0.938	52	0.923	97	0.936	142	0.815	187	0.462	232	0.461	277	0.463	322	0.579
8	0.944	53	0.931	98	0.942	143	0.812	188	0.464	233	0.466	278	0.465	323	0.595
9	0.950	54	0.940	99	0.948	144	0.808	189	0.466	234	0.470	279	0.467	324	0.610
10	0.956	55	0.949	100	0.954	145	0.805	190	0.468	235	0.474	280	0.470	325	0.625
11	0.959	56	0.957	101	0.957	146	0.801	191	0.469	236	0.479	281	0.470	326	0.641
12	0.962	57	0.965	102	0.960	147	0.798	192	0.470	237	0.483	282	0.471	327	0.656
13	0.965	58	0.973	103	0.964	148	0.794	193	0.471	238	0.486	283	0.472	328	0.670
14	0.968	59	0.980	104	0.967	149	0.789	194	0.472	239	0.490	284	0.473	329	0.683
15	0.971	60	0.986	105	0.970	150	0.785	195	0.473	240	0.493	285	0.474	330	0.696
16	0.971	61	0.991	106	0.971	151	0.779	196	0.473	241	0.495	286	0.473	331	0.709
17	0.972	62	0.995	107	0.971	152	0.773	197	0.473	242	0.497	287	0.473	332	0.720
18	0.972	63	0.998	108	0.972	153	0.766	198	0.473	243	0.499	288	0.473	333	0.731
19	0.973	64	0.999	109	0.973	154	0.758	199	0.473	244	0.500	289	0.473	334	0.741
20	0.974	65	1.000	110	0.974	155	0.750	200	0.473	245	0.500	290	0.473	335	0.750
21	0.973	66	0.999	111	0.973	156	0.741	201	0.473	246	0.500	291	0.473	336	0.758
22	0.972	67	0.998	112	0.972	157	0.731	202	0.473	247	0.499	292	0.473	337	0.766
23	0.971	68	0.995	113	0.972	158	0.720	203	0.473	248	0.497	293	0.473	338	0.773
24	0.971	69	0.991	114	0.971	159	0.709	204	0.473	249	0.495	294	0.473	339	0.779
25	0.970	70	0.986	115	0.971	160	0.696	205	0.474	250	0.493	295	0.473	340	0.785
26	0.967	71	0.980	116	0.968	161	0.683	206	0.473	251	0.490	296	0.472	341	0.789
27	0.964	72	0.973	117	0.965	162	0.670	207	0.472	252	0.486	297	0.471	342	0.794
28	0.960	73	0.965	118	0.962	163	0.656	208	0.471	253	0.483	298	0.470	343	0.798
29	0.957	74	0.957	119	0.959	164	0.641	209	0.470	254	0.479	299	0.469	344	0.801
30	0.954	75	0.949	120	0.956	165	0.625	210	0.470	255	0.474	300	0.468	345	0.805
31	0.948	76	0.940	121	0.950	166	0.610	211	0.467	256	0.470	301	0.466	346	0.808
32	0.942	77	0.931	122	0.944	167	0.595	212	0.465	257	0.466	302	0.464	347	0.812
33	0.936	78	0.923	123	0.938	168	0.579	213	0.463	258	0.461	303	0.462	348	0.815
34	0.931	79	0.914	124	0.932	169	0.564	214	0.461	259	0.457	304	0.460	349	0.819
35	0.925	80	0.906	125	0.926	170	0.548	215	0.459	260	0.453	305	0.457	350	0.823
36	0.910	81	0.899	126	0.915	171	0.534	216	0.452	261	0.449	306	0.449	351	0.827
37	0.899	82	0.892	127	0.904	172	0.520	217	0.447	262	0.446	307	0.443	352	0.831
38	0.890	83	0.886	128	0.895	173	0.506	218	0.443	263	0.443	308	0.440	353	0.835
39	0.884	84	0.882	129	0.887	174	0.494	219	0.441	264	0.441	309	0.441	354	0.840
40	0.880	85	0.878	130	0.881	175	0.482	220	0.440	265	0.439	310	0.446	355	0.846
41	0.877	86	0.876	131	0.872	176	0.472	221	0.438	266	0.438	311	0.450	356	0.852
42	0.875	87	0.874	132	0.864	177	0.463	222	0.437	267	0.437	312	0.456	357	0.858
43	0.874	88	0.875	133	0.858	178	0.456	223	0.437	268	0.437	313	0.463	358	0.864
44	0.876	89	0.877	134	0.852	179	0.450	224	0.438	269	0.438	314	0.472	359	0.872

Remarks: Exhibit 5

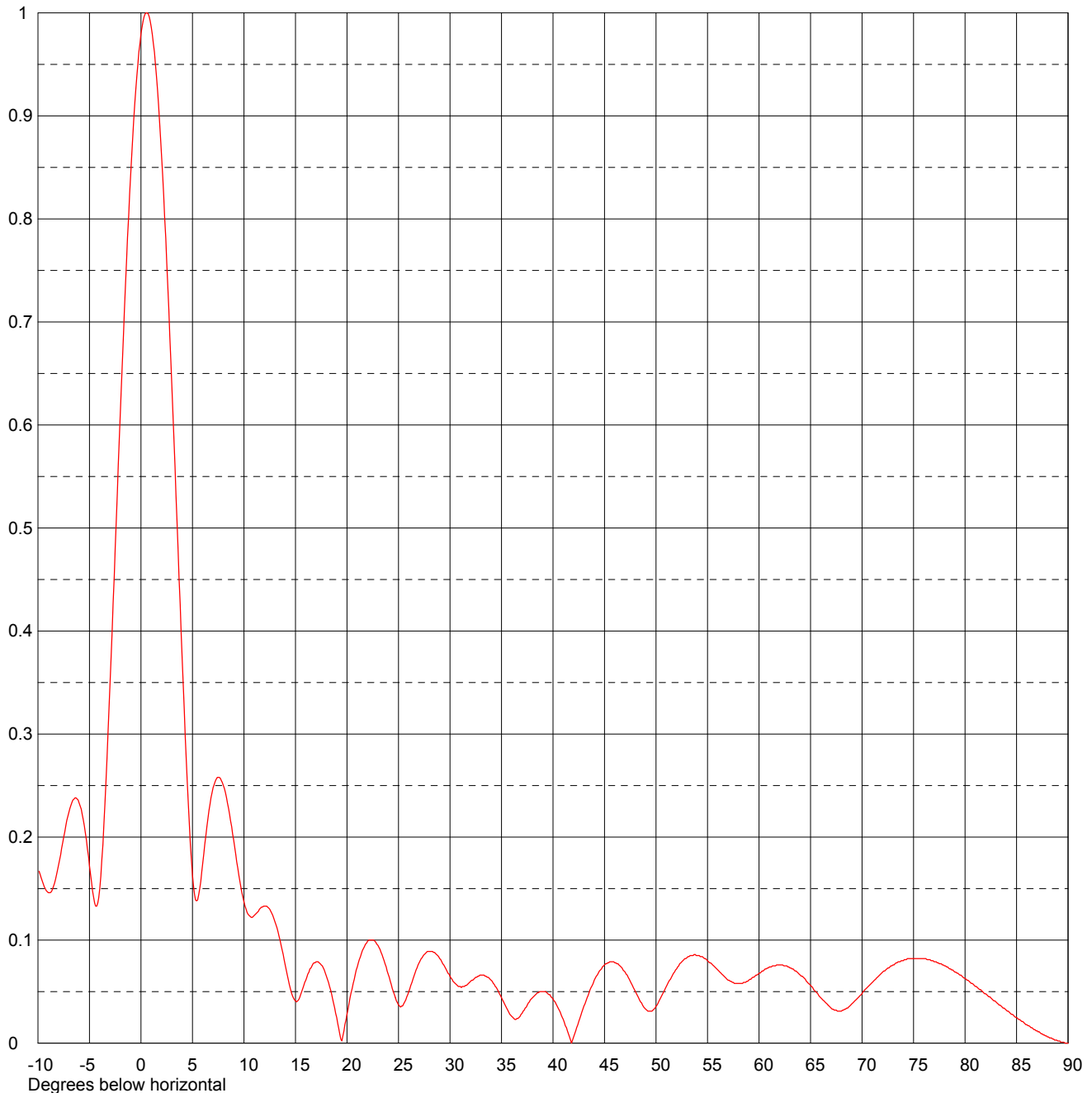




Date	03 Sep 2002
Call Letters	WVAN-DT Channel 13
Location	Savannah, GA
Customer	GPTC
Antenna Type	THA-S4-12/48-1

### ELEVATION PATTERN

RMS Gain at Main Lobe	11.8 (10.72 dB)	Beam Tilt	0.60 Degrees
RMS Gain at Horizontal	11.3 (10.53 dB)	Frequency	213.00 MHz
Calculated / Measured	Calculated	Drawing #	12H118060-90



Remarks: Exhibit 6



Date **03 Sep 2002**  
 Call Letters **WVAN-DT** Channel **13**  
 Location **Savannah, GA**  
 Customer **GPTC**  
 Antenna Type **THA-S4-12/48-1**

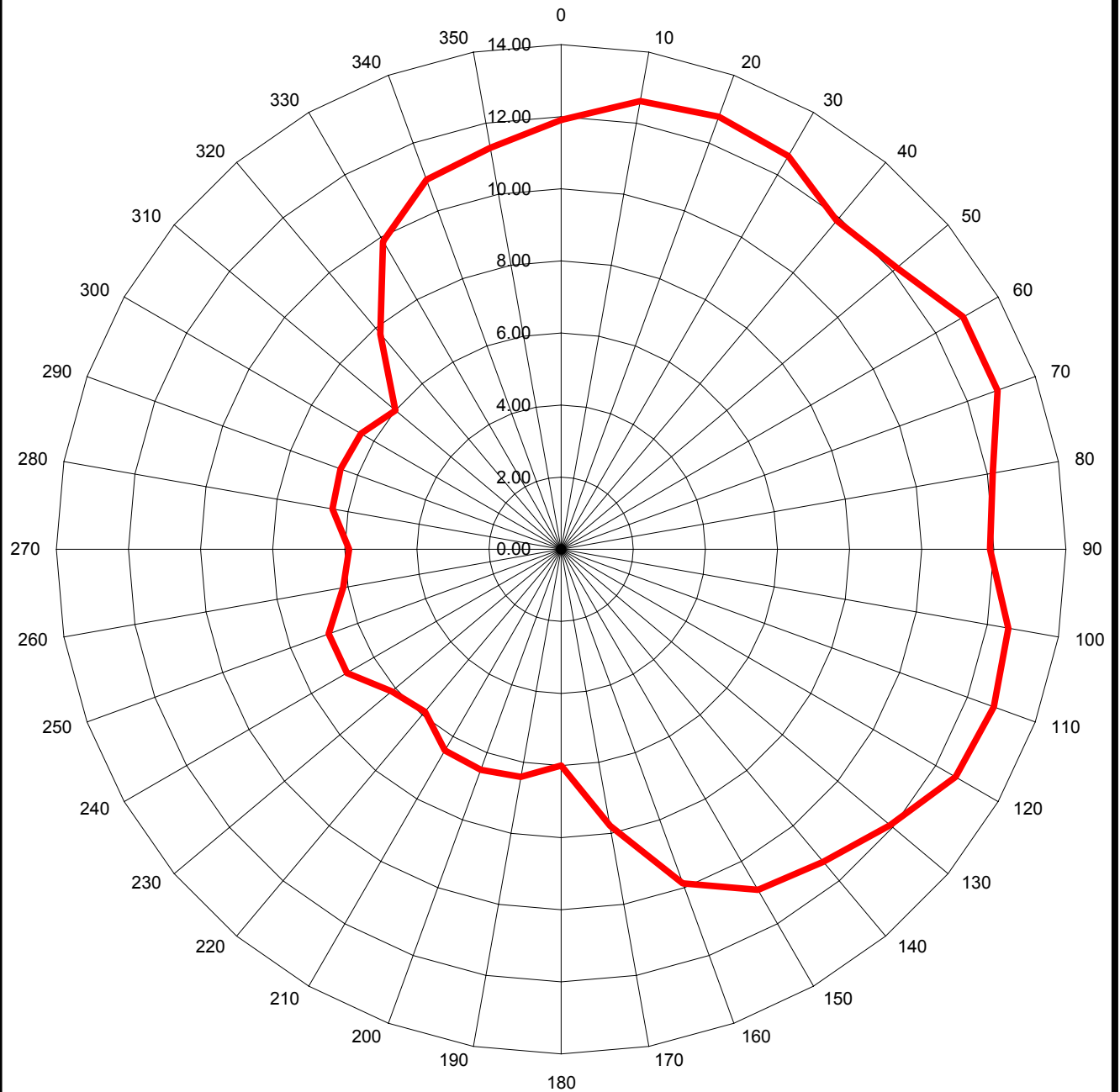
## TABULATION OF ELEVATION PATTERN

Elevation Pattern Drawing # **12H118060-90**

Angle	Field	Angle	Field	Angle	Field	Angle	Field	Angle	Field	Angle	Field
-10.0	0.170	2.4	0.781	10.6	0.123	30.5	0.058	51.0	0.055	71.5	0.064
-9.5	0.155	2.6	0.735	10.8	0.122	31.0	0.055	51.5	0.064	72.0	0.069
-9.0	0.146	2.8	0.687	11.0	0.124	31.5	0.056	52.0	0.072	72.5	0.073
-8.5	0.152	3.0	0.637	11.5	0.130	32.0	0.060	52.5	0.079	73.0	0.076
-8.0	0.173	3.2	0.585	12.0	0.133	32.5	0.064	53.0	0.083	73.5	0.079
-7.5	0.200	3.4	0.532	12.5	0.130	33.0	0.066	53.5	0.085	74.0	0.080
-7.0	0.224	3.6	0.479	13.0	0.118	33.5	0.065	54.0	0.085	74.5	0.082
-6.5	0.237	3.8	0.426	13.5	0.100	34.0	0.061	54.5	0.084	75.0	0.082
-6.0	0.233	4.0	0.373	14.0	0.076	34.5	0.054	55.0	0.080	75.5	0.082
-5.5	0.211	4.2	0.323	14.5	0.053	35.0	0.044	55.5	0.076	76.0	0.082
-5.0	0.172	4.4	0.275	15.0	0.041	35.5	0.034	56.0	0.071	76.5	0.081
-4.5	0.136	4.6	0.231	15.5	0.047	36.0	0.026	56.5	0.066	77.0	0.079
-4.0	0.150	4.8	0.193	16.0	0.061	36.5	0.024	57.0	0.061	77.5	0.077
-3.5	0.232	5.0	0.163	16.5	0.073	37.0	0.029	57.5	0.059	78.0	0.075
-3.0	0.350	5.2	0.144	17.0	0.079	37.5	0.037	58.0	0.058	78.5	0.072
-2.8	0.401	5.4	0.138	17.5	0.076	38.0	0.044	58.5	0.059	79.0	0.069
-2.6	0.454	5.6	0.144	18.0	0.065	38.5	0.049	59.0	0.061	79.5	0.066
-2.4	0.507	5.8	0.157	18.5	0.048	39.0	0.050	59.5	0.064	80.0	0.063
-2.2	0.561	6.0	0.175	19.0	0.025	39.5	0.048	60.0	0.068	80.5	0.059
-2.0	0.613	6.2	0.193	19.5	0.002	40.0	0.043	60.5	0.071	81.0	0.055
-1.8	0.664	6.4	0.210	20.0	0.028	40.5	0.034	61.0	0.074	81.5	0.052
-1.6	0.713	6.6	0.226	20.5	0.053	41.0	0.023	61.5	0.075	82.0	0.048
-1.4	0.760	6.8	0.238	21.0	0.074	41.5	0.009	62.0	0.076	82.5	0.044
-1.2	0.803	7.0	0.248	21.5	0.090	42.0	0.006	62.5	0.075	83.0	0.040
-1.0	0.843	7.2	0.254	22.0	0.099	42.5	0.021	63.0	0.073	83.5	0.036
-0.8	0.880	7.4	0.258	22.5	0.100	43.0	0.036	63.5	0.070	84.0	0.032
-0.6	0.912	7.6	0.258	23.0	0.095	43.5	0.049	64.0	0.066	84.5	0.028
-0.4	0.939	7.8	0.255	23.5	0.083	44.0	0.061	64.5	0.062	85.0	0.025
-0.2	0.962	8.0	0.250	24.0	0.067	44.5	0.070	65.0	0.056	85.5	0.021
0.0	0.980	8.2	0.243	24.5	0.050	45.0	0.076	65.5	0.050	86.0	0.018
0.2	0.992	8.4	0.233	25.0	0.037	45.5	0.079	66.0	0.044	86.5	0.015
0.4	0.999	8.6	0.222	25.5	0.038	46.0	0.078	66.5	0.039	87.0	0.012
0.6	1.000	8.8	0.210	26.0	0.050	46.5	0.075	67.0	0.034	87.5	0.009
0.8	0.996	9.0	0.197	26.5	0.065	47.0	0.069	67.5	0.032	88.0	0.006
1.0	0.986	9.2	0.183	27.0	0.078	47.5	0.060	68.0	0.031	88.5	0.004
1.2	0.971	9.4	0.170	27.5	0.086	48.0	0.050	68.5	0.034	89.0	0.002
1.4	0.951	9.6	0.157	28.0	0.089	48.5	0.040	69.0	0.038	89.5	0.001
1.6	0.926	9.8	0.146	28.5	0.088	49.0	0.033	69.5	0.043	90.0	0.000
1.8	0.896	10.0	0.137	29.0	0.082	49.5	0.031	70.0	0.048		
2.0	0.861	10.2	0.130	29.5	0.074	50.0	0.036	70.5	0.054		
2.2	0.823	10.4	0.125	30.0	0.065	50.5	0.045	71.0	0.059		

Remarks: Exhibit 7

## ERP - dBk



**DIELECTRIC MODEL THA-S4-12/48-1**  
**DIRECTIONAL ANTENNA (SKULL)**  
**ORIENTED WITH MAIN BEAM MAXIMUM TOWARD 065°**  
**0.60 DEGREES ELECTRICAL BEAM TILT**  
**MAXIMUM ANTENNA GAIN IN BEAM MAXIMUM 13.50 dB**

**KESSLER & GEHMAN**  
TELECOMMUNICATIONS CONSULTING ENGINEERS  
507 N.W. 60th Street, Suite C  
Gainesville, Florida 32607

**WVAN-DT CHANNEL 13**  
**SAVANNAH, GEORGIA**

20020903

EXHIBIT 8

## WVAN-DT CHANNEL 13

SAVANNAH, GEORGIA

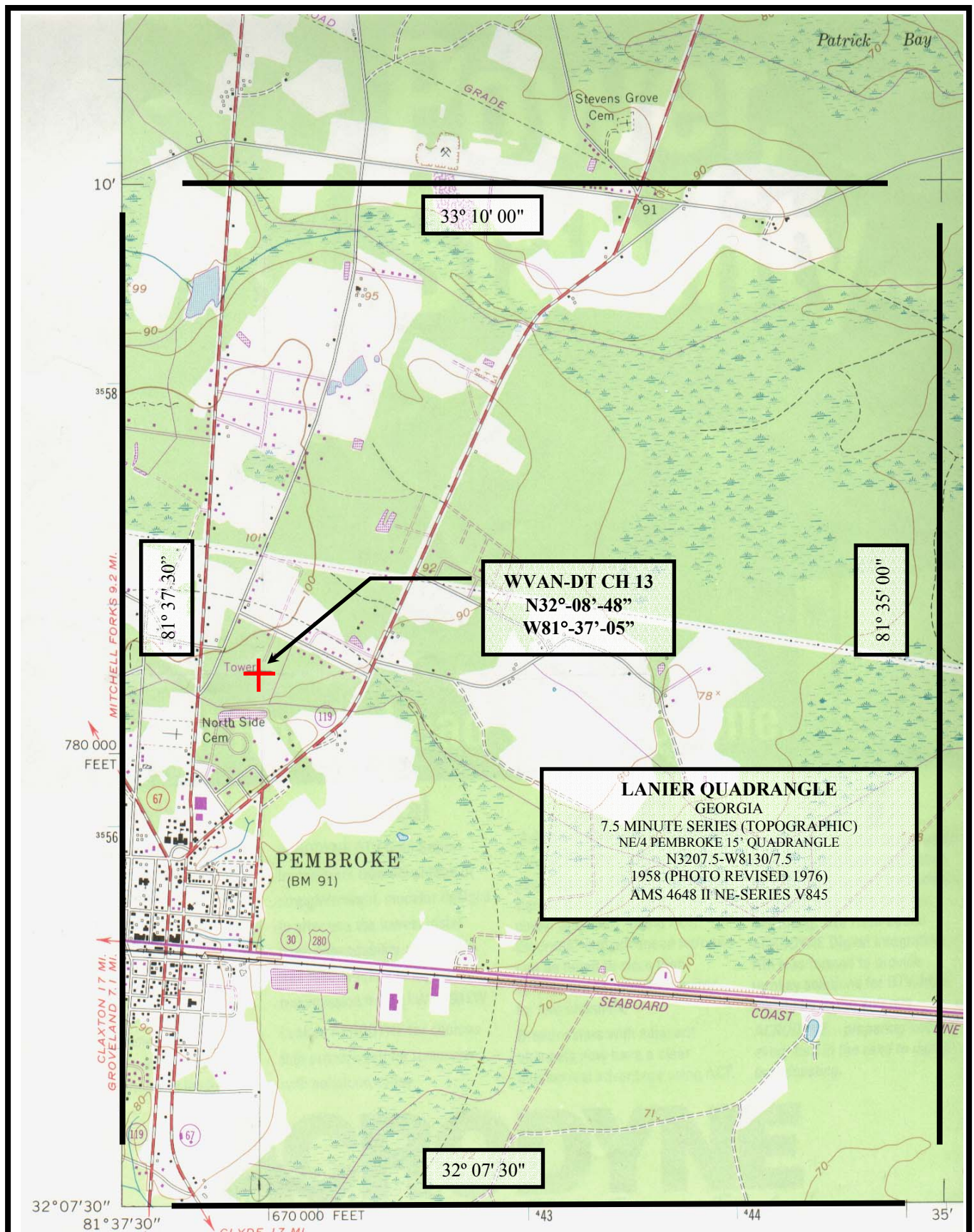
### TABULATION OF RELATIVE FIELDS FOR PROPOSED DIRECTIONAL ANTENNA

<u>AZIMUTH</u>	<u>RELATIVE FIELD</u>	<u>AZIMUTH</u>	<u>RELATIVE FIELD</u>
N000°E	0.881	N180°E	0.446
N010°E	0.956	N190°E	0.468
N020°E	0.974	N200°E	0.473
N030°E	0.954	N210°E	0.470
N040°E	0.880	N220°E	0.440
N050°E	0.906	N230°E	0.453
N060°E	0.986	N240°E	0.493
N070°E	0.986	N250°E	0.493
N080°E	0.906	N260°E	0.453
N090°E	0.880	N270°E	0.440
N100°E	0.954	N280°E	0.470
N110°E	0.974	N290°E	0.473
N120°E	0.956	N300°E	0.468
N130°E	0.881	N310°E	0.446
N140°E	0.823	N320°E	0.548
N150°E	0.785	N330°E	0.696
N160°E	0.696	N340°E	0.785
N170°E	0.548	N350°E	0.823

MINIMUM OF 0.437 AT N222°E AND N267°E

MAXIMA OF 1.000 AT N065°E





**KESSLER & GEHMAN**

TELECOMMUNICATIONS CONSULTING ENGINEERS

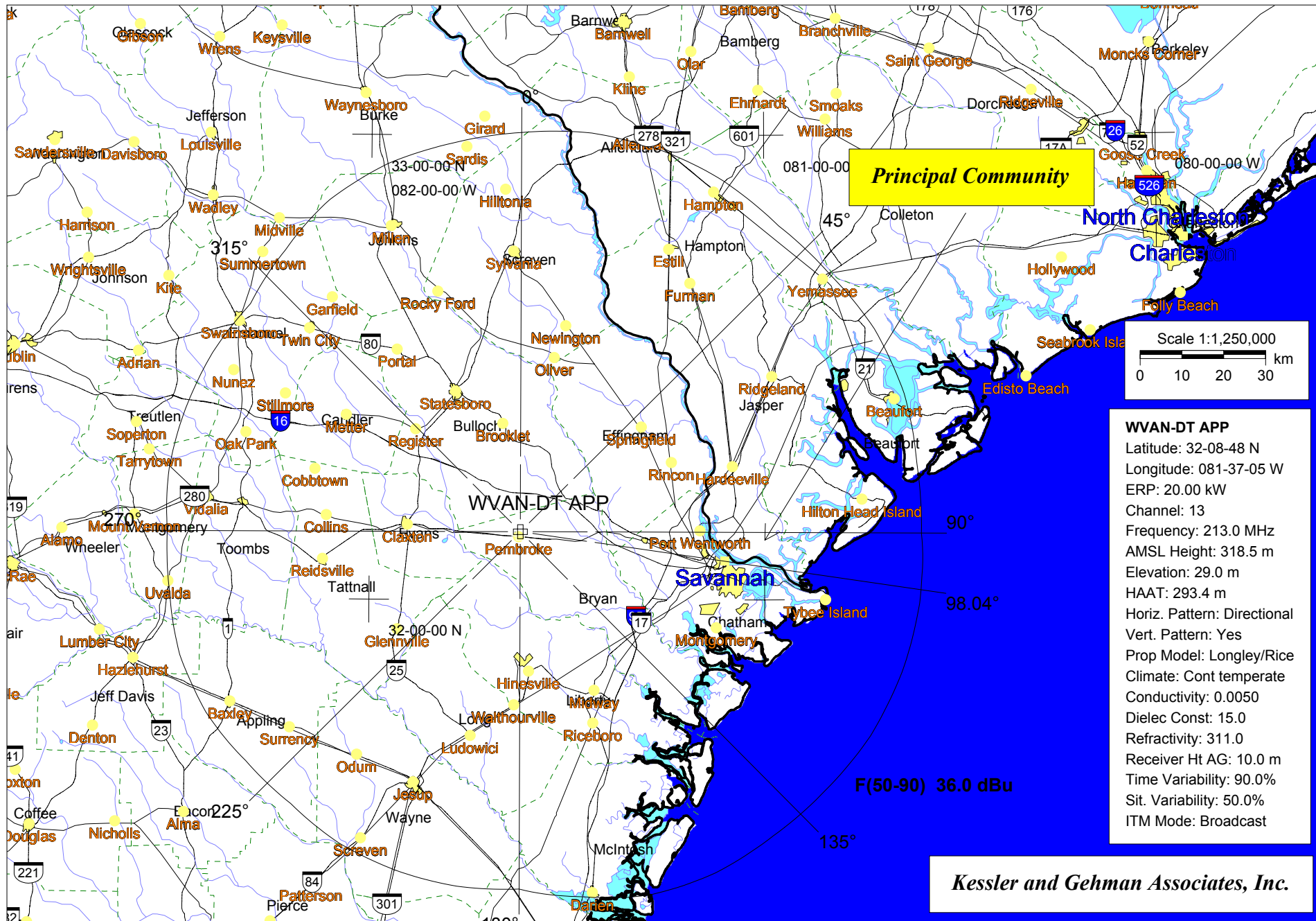
507 N.W. 60th Street, Suite C  
Gainesville, Florida 32607

**WVAN-DT CHANNEL 13**

SAVANNAH, GEORGIA

20020903

EXHIBIT 10



**Exhibit 11**

# TV INTERFERENCE and SPACING ANALYSIS PROGRAM

Date: 08-30-2002 Time: 15:03:20

Record Selected for Analysis

WVAN-D.P CUR -PROPOSED Savannah GA US  
 Channel 13 ERP 20.0 kW HAAT 00293 m RCAMSL 00318 m  
 Latitude 032-08-48 Longitude 0081-37- 5  
 Status APR Zone Border  
 Dir Antenna Make CDB Model 000000000000001 Beam tilt N Ref Azimuth 0.0  
 Last update 00000000 Cutoff date 00000000 Docket  
 Comments  
 Applicant

Cell Size for Service Analysis 2.0 km/side

Distance Increments for Longley-Rice Analysis 1.00 km

Facility meets maximum height/power limits

Azimuth (Deg)	ERP (kW)	HAAT (m)	36.0 dBu F(50,90) (km)
0.0	15.523	291.2	95.3
45.0	15.949	297.9	95.8
90.0	15.488	300.5	95.8
135.0	14.518	295.7	95.0
180.0	3.978	298.8	85.4
225.0	3.987	296.0	85.2
270.0	3.872	282.8	84.3
315.0	4.940	280.1	86.1

## Evaluation toward Class A Stations

Contour overlap to Class A station

W13CC 13 SAVANNAH GA BLTVL 19940608IL

D/U ratio at contour -1.3 dB

Offset Proposed Offset Class A - Required D/U ratio: 34.0

Radial 0.0 degrees

Bearing to point on contour 96.5 degrees

D/U ratio at contour -0.8 dB

Radial 10.0 degrees

Bearing to point on contour 96.4 degrees

D/U ratio at contour -0.4 dB

Radial 20.0 degrees

Bearing to point on contour 96.6 degrees

D/U ratio at contour -0.1 dB

Radial 30.0 degrees

Bearing to point on contour 97.0 degrees



D/U ratio at contour 0.3 dB  
Radial 40.0 degrees  
Bearing to point on contour 97.5 degrees  
D/U ratio at contour 0.5 dB  
Radial 50.0 degrees  
Bearing to point on contour 98.2 degrees  
D/U ratio at contour 0.8 dB  
Radial 60.0 degrees  
Bearing to point on contour 99.0 degrees  
D/U ratio at contour 0.9 dB  
Radial 70.0 degrees  
Bearing to point on contour 99.9 degrees  
D/U ratio at contour 1.1 dB  
Radial 80.0 degrees  
Bearing to point on contour 100.9 degrees  
D/U ratio at contour 1.2 dB  
Radial 90.0 degrees  
Bearing to point on contour 102.0 degrees  
D/U ratio at contour 1.3 dB  
Radial 100.0 degrees  
Bearing to point on contour 103.1 degrees  
D/U ratio at contour 1.2 dB  
Radial 110.0 degrees  
Bearing to point on contour 104.2 degrees  
D/U ratio at contour 1.1 dB  
Radial 120.0 degrees  
Bearing to point on contour 105.2 degrees  
D/U ratio at contour 1.0 dB  
Radial 130.0 degrees  
Bearing to point on contour 106.2 degrees  
D/U ratio at contour 0.8 dB  
Radial 140.0 degrees  
Bearing to point on contour 107.2 degrees  
D/U ratio at contour 0.5 dB  
Radial 150.0 degrees  
Bearing to point on contour 108.1 degrees  
D/U ratio at contour 0.2 dB  
Radial 160.0 degrees  
Bearing to point on contour 108.9 degrees  
D/U ratio at contour -0.1 dB  
Radial 170.0 degrees  
Bearing to point on contour 109.5 degrees  
D/U ratio at contour -0.5 dB  
Radial 180.0 degrees  
Bearing to point on contour 110.0 degrees  
D/U ratio at contour -0.9 dB  
Radial 190.0 degrees  
Bearing to point on contour 110.3 degrees  
D/U ratio at contour -1.3 dB  
Radial 200.0 degrees  
Bearing to point on contour 110.4 degrees  
D/U ratio at contour -1.7 dB  
Radial 210.0 degrees  
Bearing to point on contour 110.3 degrees  
D/U ratio at contour -2.2 dB  
Radial 220.0 degrees  
Bearing to point on contour 110.0 degrees



D/U ratio at contour -2.5 dB  
 Radial 230.0 degrees  
 Bearing to point on contour 109.5 degrees  
 D/U ratio at contour -2.9 dB  
 Radial 240.0 degrees  
 Bearing to point on contour 108.7 degrees  
 D/U ratio at contour -3.2 dB  
 Radial 250.0 degrees  
 Bearing to point on contour 107.7 degrees  
 D/U ratio at contour -3.4 dB  
 Radial 260.0 degrees  
 Bearing to point on contour 106.6 degrees  
 D/U ratio at contour -3.5 dB  
 Radial 270.0 degrees  
 Bearing to point on contour 105.3 degrees  
 D/U ratio at contour -3.6 dB  
 Radial 280.0 degrees  
 Bearing to point on contour 104.0 degrees  
 D/U ratio at contour -3.5 dB  
 Radial 290.0 degrees  
 Bearing to point on contour 102.6 degrees  
 D/U ratio at contour -3.4 dB  
 Radial 300.0 degrees  
 Bearing to point on contour 101.3 degrees  
 D/U ratio at contour -3.2 dB  
 Radial 310.0 degrees  
 Bearing to point on contour 100.0 degrees  
 D/U ratio at contour -2.9 dB  
 Radial 320.0 degrees  
 Bearing to point on contour 98.9 degrees  
 D/U ratio at contour -2.5 dB  
 Radial 330.0 degrees  
 Bearing to point on contour 98.0 degrees  
 D/U ratio at contour -2.1 dB  
 Radial 340.0 degrees  
 Bearing to point on contour 97.2 degrees  
 D/U ratio at contour -1.7 dB  
 Radial 350.0 degrees  
 Bearing to point on contour 96.7 degrees

Class A Evaluation Complete

SPACING VIOLATION FOUND BETWEEN STATION

WVAN-D.P 13 Savannah                      GA CUR                      PROPOSED

and station

SHORT TO: WTLV              13 JACKSONVILLE                      FL BMPCDT              20000501ADK  
 030-16-24    0081-33-13  
 Req. separation 273.6 Actual separation 207.8 Short    65.8 km

SHORT TO: WTLV-DT 13 JACKSONVILLE FL DTVPLN DTVP0112  
 30-16-23 81-33-13  
 Req. separation 273.6 Actual separation 207.8 Short 65.8 km

SHORT TO: WMAZ-TV 13 MACON GA BLCT 2397  
 032-45-10 0083-33-32  
 Req. separation 273.6 Actual separation 194.5 Short 79.1 km

Proposed facility OK to FCC Monitoring Stations

Proposed facility OK toward West Virginia quite zone

Proposed facility OK toward Table Mountain

Proposed facility is beyond the Canadian coordination distance

Proposed facility is beyond the Mexican coordination distance

Proposed station is OK toward AM broadcast stations

\*\*\*\*\*

#### Start of Interference Analysis

Channel	Proposed Station Call	City/State	ARN	
13	WVAN-D.P	Savannah GA	CUR	PROPOSED

#### Stations Potentially Affected by Proposed Station

Chan	Call	City/State	Dist(km)	Status	Application	Ref. No.
12	WTLV	JACKSONVILLE FL	208.3	LIC	BLCT	-19860102KE
12	WRDW-TV	AUGUSTA GA	141.8	LIC	BMLCT	-557
13	WTLV	JACKSONVILLE FL	208.3	CP MOD	BMPCDT	-20000501ADK
13	WTLV-DT	JACKSONVILLE FL	208.3	PLN	DTVPLN	-DTVP0112
13	WMBB	PANAMA CITY FL	410.2	LIC	BLCT	-19900816KE
13	WMAZ-TV	MACON GA	194.1	LIC	BLCT	-2397
13	WLOS	ASHEVILLE NC	379.3	LIC	BLCT	-2599
13	WBTW	FLORENCE SC	326.2	LIC	BLCT	-19800922KH

%%%

#### Analysis of Interference to Affected Station 1

##### NTSC Baseline Analysis

Channel	Call	City/State	Application	Ref. No.
12	WTLV	JACKSONVILLE FL	DTVPLN	-NPLN0758

#### Stations Potentially Affecting This Station

Chan	Call	City/State	Dist(km)	Status	Application	Ref. No.
11	WESH-DT	DAYTONA BEACH FL	150.1	PLN	DTVPLN	-DTVP0081

11	WTCTV	SAVANNAH GA	198.9	PLN	DTVPLN	-NPLN0707
12	WTVT-DT	TAMPA FL	280.8	PLN	DTVPLN	-DTVP0099
12	WRDWT	AUGUSTA GA	349.5	PLN	DTVPLN	-NPLN0760
13	WTLV-DT	JACKSONVILLE FL	0.0	PLN	DTVPLN	-DTVP0112

Results for: 12N FL JACKSONVILLE	DTVPLN	NPLN0758	PLN
	POPULATION	AREA (sq km)	
within Noise Limited Contour	1092653	28346.9	
not affected by terrain losses	1091561	28174.4	
lost to NTSC IX	557	256.9	
lost to additional IX by ATV	23511	1099.7	
lost to all IX	24068	1356.5	

#### Analysis of current record

Channel	Call	City/State	Application	Ref. No.
12	WTLV	JACKSONVILLE FL	BLCT	-19860102KE

#### Stations Potentially Affecting This Station

Chan	Call	City/State	Dist(km)	Status	Application	Ref. No.
11	WESH-DT	DAYTONA BEACH FL	191.0	CP MOD	BMPCDT	-19990407KJ
11	WESH-DT	DAYTONA BEACH FL	150.1	PLN	DTVPLN	-DTVP0081
11	WESH	DAYTONA BEACH FL	191.0	LIC	BLCDT	-20010614AKA
11	WTOC-TV	SAVANNAH GA	198.9	LIC	BLCT	-2311
12	WTVT	TAMPA FL	280.8	LIC	BLCDT	-20000501ABM
12	WTVT-DT	TAMPA FL	280.8	PLN	DTVPLN	-DTVP0099
12	WTVT-DT	TAMPA FL	280.8	CP MOD	BMPCDT	-19990526KG
12	WFXL-DT	ALBANY GA	249.8	CP	BPCDT	-20000427ABX
12	WRDW-TV	AUGUSTA GA	349.5	LIC	BMLCT	-557
13	WTLV	JACKSONVILLE FL	0.0	CP MOD	BMPCDT	-20000501ADK
13	WTLV-DT	JACKSONVILLE FL	0.0	PLN	DTVPLN	-DTVP0112
13	WVAN-D.P	Savannah GA	208.3	APR	CUR	-PROPOSED

Proposed station is beyond the site to  
nearest cell evaluation distance

#####

#### Analysis of Interference to Affected Station 2

#### NTSC Baseline Analysis

Channel	Call	City/State	Application	Ref. No.
12	WRDWT	AUGUSTA GA	DTVPLN	-NPLN0760

#### Stations Potentially Affecting This Station

Chan	Call	City/State	Dist(km)	Status	Application	Ref. No.
11	WTCTV	SAVANNAH GA	157.4	PLN	DTVPLN	-NPLN0707
12	WTLV	JACKSONVILLE FL	349.5	PLN	DTVPLN	-NPLN0758
12	WXII	WINSTON-SALEM NC	356.0	PLN	DTVPLN	-NPLN0779
12	WDEFTV	CHATTANOOGA TN	372.8	PLN	DTVPLN	-NPLN0795
13	WMAZTV	MACON GA	175.6	PLN	DTVPLN	-NPLN0823

Results for: 12N GA AUGUSTA	DTVPLN	NPLN0760	PLN
	POPULATION	AREA (sq km)	

within Noise Limited Contour	1232896	38591.1
not affected by terrain losses	1181556	36863.9
lost to NTSC IX	260672	4644.8
lost to additional IX by ATV	0	0.0
lost to all IX	260672	4644.8

#### Analysis of current record

Channel	Call	City/State	Application	Ref. No.
12	WRDW-TV	AUGUSTA GA	BMLCT	-557

#### Stations Potentially Affecting This Station

Chan	Call	City/State	Dist(km)	Status	Application	Ref. No.
11	WTOG-TV	SAVANNAH GA	157.4	LIC	BLCT	-2311
12	WTLV	JACKSONVILLE FL	349.5	LIC	BLCT	-19860102KE
12	WFXL-DT	ALBANY GA	298.7	CP	BPCDT	-20000427ABX
12	WGTV-TV	ATHENS GA	217.5	APP	BPRM	-20010226ABP
12	WXII	WINSTON-SALEM NC	356.0	LIC	BLCT	-2283
12	WDEF-TV	CHATTANOOGA TN	372.8	LIC	BLCT	-1619
13	WMAZ-TV	MACON GA	175.6	LIC	BLCT	-2397
13	WVAN-D.P	Savannah GA	141.8	APR	CUR	-PROPOSED

Total scenarios = 2

Result key: 1  
 Scenario 1 Affected station 2  
 Before Analysis

Results for: 12N GA AUGUSTA			BMLCT	557	LIC
	POPULATION	AREA (sq km)			
within Noise Limited Contour	1232896	38591.1			
not affected by terrain losses	1181556	36863.9			
lost to NTSC IX	260672	4644.8			
lost to additional IX by ATV	14044	678.0			
lost to all IX	274716	5322.8			

Potential Interfering Stations Included in above Scenario 1

11N GA SAVANNAH	BLCT	2311	LIC
12N FL JACKSONVILLE	BLCT	19860102KE	LIC
12N NC WINSTON-SALEM	BLCT	2283	LIC
12N TN CHATTANOOGA	BLCT	1619	LIC
13N GA MACON	BLCT	2397	LIC
12A GA ALBANY	BPCDT	20000427ABX	CP

#### After Analysis

Results for: 12N GA AUGUSTA			BMLCT	557	LIC
	POPULATION	AREA (sq km)			
within Noise Limited Contour	1232896	38591.1			
not affected by terrain losses	1181556	36863.9			
lost to NTSC IX	260672	4644.8			
lost to additional IX by ATV	14044	678.0			
lost to all IX	274716	5322.8			

Potential Interfering Stations Included in above Scenario 1

11N GA SAVANNAH	BLCT	2311	LIC	
12N FL JACKSONVILLE	BLCT	19860102KE	LIC	
12N NC WINSTON-SALEM	BLCT	2283	LIC	
12N TN CHATTANOOGA	BLCT	1619	LIC	
13N GA MACON	BLCT	2397	LIC	
12A GA ALBANY	BPCDT	20000427ABX	CP	
13A GA Savannah	CUR	PROPOSED	APR	
*Percent new DTV interference without proposal:			1.1	BMLCT 557
*Percent new DTV interference with proposal:			1.1	BMLCT 557

Result key: 2  
Scenario 2 Affected station 2  
Before Analysis

Results for: 12N GA AUGUSTA	BMLCT	557	LIC
	POPULATION	AREA (sq km)	
within Noise Limited Contour	1232896	38591.1	
not affected by terrain losses	1181556	36863.9	
lost to NTSC IX	260672	4644.8	
lost to additional IX by ATV	37395	2469.7	
lost to all IX	298067	7114.5	

Potential Interferring Stations Included in above Scenario 2

11N GA SAVANNAH	BLCT	2311	LIC
12N FL JACKSONVILLE	BLCT	19860102KE	LIC
12N NC WINSTON-SALEM	BLCT	2283	LIC
12N TN CHATTANOOGA	BLCT	1619	LIC
13N GA MACON	BLCT	2397	LIC
12A GA ALBANY	BPCDT	20000427ABX	CP
12A GA ATHENS	BPRM	20010226ABP	APP

After Analysis

Results for: 12N GA AUGUSTA	BMLCT	557	LIC
	POPULATION	AREA (sq km)	
within Noise Limited Contour	1232896	38591.1	
not affected by terrain losses	1181556	36863.9	
lost to NTSC IX	260672	4644.8	
lost to additional IX by ATV	37395	2469.7	
lost to all IX	298067	7114.5	

Potential Interferring Stations Included in above Scenario 2

11N GA SAVANNAH	BLCT	2311	LIC
12N FL JACKSONVILLE	BLCT	19860102KE	LIC
12N NC WINSTON-SALEM	BLCT	2283	LIC
12N TN CHATTANOOGA	BLCT	1619	LIC
13N GA MACON	BLCT	2397	LIC
12A GA ALBANY	BPCDT	20000427ABX	CP
12A GA ATHENS	BPRM	20010226ABP	APP
13A GA Savannah	CUR	PROPOSED	APR
*Percent new DTV interference without proposal:			3.0 BMLCT 557
*Percent new DTV interference with proposal:			3.0 BMLCT 557

#####

# Analysis of Interference to Affected Station 3

## DTV Baseline Analysis

Channel	Call	City/State	Application	Ref. No.
13	WTLV-DT	JACKSONVILLE FL	DTVPLN	-DTVP0112

## Stations Potentially Affecting This Station

Chan	Call	City/State	Dist(km)	Status	Application	Ref. No.
12	WTLV	JACKSONVILLE FL	0.0	PLN	DTVPLN	-NPLN0758
13	WMBB	PANAMA CITY FL	368.3	PLN	DTVPLN	-NPLN0821
13	WTVT	TAMPA FL	280.8	PLN	DTVPLN	-NPLN0822
13	WMAZTV	MACON GA	334.8	PLN	DTVPLN	-NPLN0823

Results for: 13A FL JACKSONVILLE DTVPLN DTVP0112 PLN  
 HAAT 296.0 m, ATV ERP 14.6 kW

	POPULATION	AREA (sq km)
within Noise Limited Contour	1092636	28350.9
not affected by terrain losses	1092414	28318.8
lost to NTSC IX	8558	573.9
lost to additional IX by ATV	0	0.0
lost to ATV IX only	0	0.0
lost to all IX	8558	573.9

## NTSC Baseline Analysis

Channel	Call	City/State	Application	Ref. No.
12	WTLV	JACKSONVILLE FL	DTVPLN	-NPLN0758

## Stations Potentially Affecting This Station

Chan	Call	City/State	Dist(km)	Status	Application	Ref. No.
11	WESH-DT	DAYTONA BEACH FL	150.1	PLN	DTVPLN	-DTVP0081
11	WTCTV	SAVANNAH GA	198.9	PLN	DTVPLN	-NPLN0707
12	WTVT-DT	TAMPA FL	280.8	PLN	DTVPLN	-DTVP0099
12	WRDWT	AUGUSTA GA	349.5	PLN	DTVPLN	-NPLN0760
13	WTLV-DT	JACKSONVILLE FL	0.0	PLN	DTVPLN	-DTVP0112

Results for: 12N FL JACKSONVILLE DTVPLN NPLN0758 PLN

	POPULATION	AREA (sq km)
within Noise Limited Contour	1092653	28346.9
not affected by terrain losses	1091561	28174.4
lost to NTSC IX	557	256.9
lost to additional IX by ATV	23511	1099.7
lost to all IX	24068	1356.5

## Analysis of current record

Channel	Call	City/State	Application	Ref. No.
13	WTLV	JACKSONVILLE FL	BMPCDT	-20000501ADK

## Stations Potentially Affecting This Station

Chan	Call	City/State	Dist(km)	Status	Application	Ref. No.
------	------	------------	----------	--------	-------------	----------

12	WTLV	JACKSONVILLE FL	0.0	LIC	BLCT	-19860102KE
13	WMBB	PANAMA CITY FL	368.3	LIC	BLCT	-19900816KE
13	WTVT	TAMPA FL	280.9	LIC	BLCT	-1682
13	WMAZ-TV	MACON GA	334.7	LIC	BLCT	-2397
13	WVAN-D.P	Savannah GA	208.3	APR	CUR	-PROPOSED

Total scenarios = 1

Result key: 3  
Scenario 1 Affected station 3  
Before Analysis

Results for: 13A FL JACKSONVILLE BMPCDT 20000501ADK CP  
HAAT 310.0 m, ATV ERP 25.0 kW

	POPULATION	AREA (sq km)
within Noise Limited Contour	1155719	31517.5
not affected by terrain losses	1155466	31489.4
lost to NTSC IX	21165	441.5
lost to additional IX by ATV	0	0.0
lost to ATV IX only	0	0.0
lost to all IX	21165	441.5

Potential Interferring Stations Included in above Scenario 1

13N FL PANAMA CITY	BLCT	19900816KE	LIC
13N FL TAMPA	BLCT	1682	LIC

After Analysis

Results for: 13A FL JACKSONVILLE BMPCDT 20000501ADK CP  
HAAT 310.0 m, ATV ERP 25.0 kW

	POPULATION	AREA (sq km)
within Noise Limited Contour	1155719	31517.5
not affected by terrain losses	1155466	31489.4
lost to NTSC IX	21165	441.5
lost to additional IX by ATV	17144	337.1
lost to ATV IX only	20839	373.2
lost to all IX	38309	778.6

Potential Interferring Stations Included in above Scenario 1

13N FL PANAMA CITY	BLCT	19900816KE	LIC
13N FL TAMPA	BLCT	1682	LIC
13A GA Savannah	CUR	PROPOSED	APR
*Percent Service lost without proposal:	-4.0	to BMPCDT	20000501ADK
*Percent Service lost with proposal:	-2.4	to BMPCDT	20000501ADK

#####

Analysis of Interference to Affected Station 4

Analysis of current record  
Channel Call City/State Application Ref. No.

13 WTLV-DT JACKSONVILLE FL DTVPLN -DTVP0112

Stations Potentially Affecting This Station

Chan	Call	City/State	Dist(km)	Status	Application	Ref. No.
12	WTLV	JACKSONVILLE FL	0.0	LIC	BLCT	-19860102KE
13	WMBB	PANAMA CITY FL	368.3	LIC	BLCT	-19900816KE
13	WTVT	TAMPA FL	280.8	LIC	BLCT	-1682
13	WMAZ-TV	MACON GA	334.8	LIC	BLCT	-2397
13	WVAN-D.P	Savannah GA	208.3	APR	CUR	-PROPOSED

Total scenarios = 1

Result key: 4  
 Scenario 1 Affected station 4  
 Before Analysis

Results for: 13A FL JACKSONVILLE DTVPLN DTVP0112 PLN  
 HAAT 296.0 m, ATV ERP 14.6 kW

	POPULATION	AREA (sq km)
within Noise Limited Contour	1092636	28350.9
not affected by terrain losses	1092414	28318.8
lost to NTSC IX	8485	573.9
lost to additional IX by ATV	0	0.0
lost to ATV IX only	0	0.0
lost to all IX	8485	573.9

Potential Interferring Stations Included in above Scenario 1

13N FL PANAMA CITY	BLCT	19900816KE	LIC
13N FL TAMPA	BLCT	1682	LIC

After Analysis

Results for: 13A FL JACKSONVILLE DTVPLN DTVP0112 PLN  
 HAAT 296.0 m, ATV ERP 14.6 kW

	POPULATION	AREA (sq km)
within Noise Limited Contour	1092636	28350.9
not affected by terrain losses	1092414	28318.8
lost to NTSC IX	8485	573.9
lost to additional IX by ATV	908	188.6
lost to ATV IX only	976	216.7
lost to all IX	9393	762.6

Potential Interferring Stations Included in above Scenario 1

13N FL PANAMA CITY	BLCT	19900816KE	LIC
13N FL TAMPA	BLCT	1682	LIC
13A GA Savannah	CUR	PROPOSED	APR
*Percent Service lost without proposal:	0.6	to DTVPLN	DTVP0112
*Percent Service lost with proposal:	0.7	to DTVPLN	DTVP0112

#####



# Analysis of Interference to Affected Station 5

## NTSC Baseline Analysis

Channel	Call	City/State	Application	Ref. No.
13	WMBB	PANAMA CITY FL	DTVPLN	-NPLN0821

## Stations Potentially Affecting This Station

Chan	Call	City/State	Dist(km)	Status	Application	Ref. No.
12	WSFA	MONTGOMERY AL	194.8	PLN	DTVPLN	-NPLN0752
13	WVTMTV	BIRMINGHAM AL	373.2	PLN	DTVPLN	-NPLN0812
13	WTLV-DT	JACKSONVILLE FL	368.3	PLN	DTVPLN	-DTVP0112
13	WTVT	TAMPA FL	415.8	PLN	DTVPLN	-NPLN0822
13	WMAZTV	MACON GA	318.2	PLN	DTVPLN	-NPLN0823
13	WLOXTV	BILOXI MS	356.7	PLN	DTVPLN	-NPLN0842

Results for: 13N FL PANAMA CITY	DTVPLN	NPLN0821	PLN
	POPULATION	AREA (sq km)	
within Noise Limited Contour	580794	35990.2	
not affected by terrain losses	572124	35613.2	
lost to NTSC IX	60852	1860.9	
lost to additional IX by ATV	0	0.0	
lost to all IX	60852	1860.9	

## Analysis of current record

Channel	Call	City/State	Application	Ref. No.
13	WMBB	PANAMA CITY FL	BLCT	-19900816KE

## Stations Potentially Affecting This Station

Chan	Call	City/State	Dist(km)	Status	Application	Ref. No.
12	WSFA	MONTGOMERY AL	194.8	LIC	BLCT	-2576
12	WFXL-DT	ALBANY GA	182.0	CP	BPCDT	-20000427ABX
13	WVTM-TV	BIRMINGHAM AL	373.2	LIC	BLCT	-19801209KE
13	NEW	MONTGOMERY AL	239.2	APP	BNPET	-20020430AAC
13	WTLV	JACKSONVILLE FL	368.3	CP MOD	BMPCDT	-20000501ADK
13	WTLV-DT	JACKSONVILLE FL	368.3	PLN	DTVPLN	-DTVP0112
13	WTVT	TAMPA FL	415.8	LIC	BLCT	-1682
13	WMAZ-TV	MACON GA	318.2	LIC	BLCT	-2397
13	WLOX-TV	BILOXI MS	356.7	LIC	BLCT	-1455
13	WVAN-D.P	Savannah GA	410.2	APR	CUR	-PROPOSED

Proposal causes no interference

#####

# Analysis of Interference to Affected Station 6

## NTSC Baseline Analysis

Channel	Call	City/State	Application	Ref. No.
13	WMAZTV	MACON GA	DTVPLN	-NPLN0823

## Stations Potentially Affecting This Station

Chan	Call	City/State	Dist(km)	Status	Application	Ref. No.
------	------	------------	----------	--------	-------------	----------

12	WRDWT	AUGUSTA GA	175.6	PLN	DTVPLN	-NPLN0760
13	WVTMT	BIRMINGHAM AL	312.3	PLN	DTVPLN	-NPLN0812
13	WTLV-DT	JACKSONVILLE FL	334.8	PLN	DTVPLN	-DTVP0112
13	WMBB	PANAMA CITY FL	318.2	PLN	DTVPLN	-NPLN0821
13	WLOS	ASHEVILLE NC	306.1	PLN	DTVPLN	-NPLN0845

Results for: 13N GA MACON		DTVPLN	NPLN0823	PLN
		POPULATION	AREA (sq km)	
within Noise Limited Contour		678103	25905.5	
not affected by terrain losses		658816	24516.9	
lost to NTSC IX		69266	3640.0	
lost to additional IX by ATV		0	4.0	
lost to all IX		69266	3644.0	

# Analysis of current record

Channel	Call	City/State	Application	Ref. No.
13	WMAZ-TV	MACON GA	BLCT	-2397

## Stations Potentially Affecting This Station

Chan	Call	City/State	Dist(km)	Status	Application	Ref. No.
12	WFXL-DT	ALBANY GA	160.6	CP	BPCDT	-20000427ABX
12	WGTV-TV	ATHENS GA	129.0	APP	BPRM	-20010226ABP
12	WRDW-TV	AUGUSTA GA	175.6	LIC	BMLCT	-557
13	WVTM-TV	BIRMINGHAM AL	312.3	LIC	BLCT	-19801209KE
13	NEW	MONTGOMERY AL	263.0	APP	BNPET	-20020430AAC
13	WTLV	JACKSONVILLE FL	334.7	CP MOD	BMPCDT	-20000501ADK
13	WTLV-DT	JACKSONVILLE FL	334.8	PLN	DTVPLN	-DTVP0112
13	WMBB	PANAMA CITY FL	318.2	LIC	BLCT	-19900816KE
13	WLOS	ASHEVILLE NC	306.1	LIC	BLCT	-2599
13	WRCB-DT	CHATTANOOGA TN	312.8	CP	BPCDT	-20010502AAO
13	WRCBTV	CHATTANOOGA TN	312.8	APP	BPRM	-20000328AAG
13	WVAN-D.P	Savannah GA	194.1	APR	CUR	-PROPOSED

Total scenarios = 6

Result key: 5  
Scenario 1 Affected station 6  
Before Analysis

Results for: 13N GA MACON		BLCT	2397	LIC
		POPULATION	AREA (sq km)	
within Noise Limited Contour		678103	25905.5	
not affected by terrain losses		658816	24516.9	
lost to NTSC IX		69266	3640.0	
lost to additional IX by ATV		1449	76.3	
lost to all IX		70715	3716.3	

## Potential Interfering Stations Included in above Scenario 1

12N GA AUGUSTA	BMLCT	557	LIC
13N AL BIRMINGHAM	BLCT	19801209KE	LIC
13N FL PANAMA CITY	BLCT	19900816KE	LIC
13N NC ASHEVILLE	BLCT	2599	LIC
13A FL JACKSONVILLE	BMPCDT	20000501ADK	CP
13A TN CHATTANOOGA	BPCDT	20010502AAO	CP

After Analysis

Results for: 13N GA MACON	BLCT	2397	LIC
	POPULATION	AREA (sq km)	
within Noise Limited Contour	678103	25905.5	
not affected by terrain losses	658816	24516.9	
lost to NTSC IX	69266	3640.0	
lost to additional IX by ATV	5503	662.2	
lost to all IX	74769	4302.2	

Potential Interferring Stations Included in above Scenario 1

12N GA AUGUSTA	BMLCT	557	LIC
13N AL BIRMINGHAM	BLCT	19801209KE	LIC
13N FL PANAMA CITY	BLCT	19900816KE	LIC
13N NC ASHEVILLE	BLCT	2599	LIC
13A FL JACKSONVILLE	BMPCDT	20000501ADK	CP
13A TN CHATTANOOGA	BPCDT	20010502AAO	CP
13A GA Savannah	CUR	PROPOSED	APR
*Percent new DTV interference without proposal:		0.2	BLCT 2397
*Percent new DTV interference with proposal:		0.8	BLCT 2397

Result key: 6  
Scenario 2 Affected station 6  
Before Analysis

Results for: 13N GA MACON	BLCT	2397	LIC
	POPULATION	AREA (sq km)	
within Noise Limited Contour	678103	25905.5	
not affected by terrain losses	658816	24516.9	
lost to NTSC IX	69266	3640.0	
lost to additional IX by ATV	1191	16.1	
lost to all IX	70457	3656.1	

Potential Interferring Stations Included in above Scenario 2

12N GA AUGUSTA	BMLCT	557	LIC
13N AL BIRMINGHAM	BLCT	19801209KE	LIC
13N FL PANAMA CITY	BLCT	19900816KE	LIC
13N NC ASHEVILLE	BLCT	2599	LIC
13A FL JACKSONVILLE	DTVPLN	DTVP0112	PLN
13A TN CHATTANOOGA	BPCDT	20010502AAO	CP

After Analysis

Results for: 13N GA MACON	BLCT	2397	LIC
	POPULATION	AREA (sq km)	
within Noise Limited Contour	678103	25905.5	
not affected by terrain losses	658816	24516.9	
lost to NTSC IX	69266	3640.0	
lost to additional IX by ATV	5503	662.2	
lost to all IX	74769	4302.2	

Potential Interferring Stations Included in above Scenario 2

12N GA AUGUSTA	BMLCT	557	LIC	
13N AL BIRMINGHAM	BLCT	19801209KE	LIC	
13N FL PANAMA CITY	BLCT	19900816KE	LIC	
13N NC ASHEVILLE	BLCT	2599	LIC	
13A FL JACKSONVILLE	DTVPLN	DTVP0112	PLN	
13A TN CHATTANOOGA	BPCDT	20010502AAO	CP	
13A GA Savannah	CUR	PROPOSED	APR	
*Percent new DTV interference without proposal:			0.2	BLCT 2397
*Percent new DTV interference with proposal:			0.8	BLCT 2397

Result key: 7  
Scenario 3 Affected station 6  
Before Analysis

Results for: 13N GA MACON	BLCT	2397	LIC
	POPULATION	AREA (sq km)	
within Noise Limited Contour	678103	25905.5	
not affected by terrain losses	658816	24516.9	
lost to NTSC IX	70699	3716.3	
lost to additional IX by ATV	873	80.3	
lost to all IX	71572	3796.5	

Potential Interferring Stations Included in above Scenario 3

12N GA AUGUSTA	BMLCT	557	LIC
13N AL BIRMINGHAM	BLCT	19801209KE	LIC
13N AL MONTGOMERY	BNPET	20020430AAC	APP
13N FL PANAMA CITY	BLCT	19900816KE	LIC
13N NC ASHEVILLE	BLCT	2599	LIC
12A GA ATHENS	BPRM	20010226ABP	APP
13A FL JACKSONVILLE	BMPCDT	20000501ADK	CP
13A TN CHATTANOOGA	BPCDT	20010502AAO	CP

After Analysis

Results for: 13N GA MACON	BLCT	2397	LIC
	POPULATION	AREA (sq km)	
within Noise Limited Contour	678103	25905.5	
not affected by terrain losses	658816	24516.9	
lost to NTSC IX	70699	3716.3	
lost to additional IX by ATV	4927	666.2	
lost to all IX	75626	4382.5	

Potential Interferring Stations Included in above Scenario 3

12N GA AUGUSTA	BMLCT	557	LIC
13N AL BIRMINGHAM	BLCT	19801209KE	LIC
13N AL MONTGOMERY	BNPET	20020430AAC	APP
13N FL PANAMA CITY	BLCT	19900816KE	LIC
13N NC ASHEVILLE	BLCT	2599	LIC
12A GA ATHENS	BPRM	20010226ABP	APP
13A FL JACKSONVILLE	BMPCDT	20000501ADK	CP
13A TN CHATTANOOGA	BPCDT	20010502AAO	CP
13A GA Savannah	CUR	PROPOSED	APR
*Percent new DTV interference without proposal:			0.1 BLCT 2397
*Percent new DTV interference with proposal:			0.7 BLCT 2397

Result key: 8  
 Scenario 4 Affected station 6  
 Before Analysis

Results for: 13N GA MACON	BLCT	2397	LIC
	POPULATION	AREA (sq km)	
within Noise Limited Contour	678103	25905.5	
not affected by terrain losses	658816	24516.9	
lost to NTSC IX	70699	3716.3	
lost to additional IX by ATV	873	80.3	
lost to all IX	71572	3796.5	

Potential Interferring Stations Included in above Scenario 4

12N GA AUGUSTA	BMLCT	557	LIC
13N AL BIRMINGHAM	BLCT	19801209KE	LIC
13N AL MONTGOMERY	BNPET	20020430AAC	APP
13N FL PANAMA CITY	BLCT	19900816KE	LIC
13N NC ASHEVILLE	BLCT	2599	LIC
12A GA ATHENS	BPRM	20010226ABP	APP
13A FL JACKSONVILLE	BMPCDT	20000501ADK	CP
13A TN CHATTANOOGA	BPRM	20000328AAG	APP

After Analysis

Results for: 13N GA MACON	BLCT	2397	LIC
	POPULATION	AREA (sq km)	
within Noise Limited Contour	678103	25905.5	
not affected by terrain losses	658816	24516.9	
lost to NTSC IX	70699	3716.3	
lost to additional IX by ATV	4927	666.2	
lost to all IX	75626	4382.5	

Potential Interferring Stations Included in above Scenario 4

12N GA AUGUSTA	BMLCT	557	LIC
13N AL BIRMINGHAM	BLCT	19801209KE	LIC
13N AL MONTGOMERY	BNPET	20020430AAC	APP
13N FL PANAMA CITY	BLCT	19900816KE	LIC
13N NC ASHEVILLE	BLCT	2599	LIC
12A GA ATHENS	BPRM	20010226ABP	APP
13A FL JACKSONVILLE	BMPCDT	20000501ADK	CP
13A TN CHATTANOOGA	BPRM	20000328AAG	APP
13A GA Savannah	CUR	PROPOSED	APR
*Percent new DTV interference without proposal:		0.1	BLCT 2397
*Percent new DTV interference with proposal:		0.7	BLCT 2397

Result key: 9  
 Scenario 5 Affected station 6  
 Before Analysis

Results for: 13N GA MACON	BLCT	2397	LIC
	POPULATION	AREA (sq km)	
within Noise Limited Contour	678103	25905.5	

not affected by terrain losses	658816	24516.9
lost to NTSC IX	70699	3716.3
lost to additional IX by ATV	615	20.1
lost to all IX	71314	3736.3

Potential Interferring Stations Included in above Scenario 5

12N GA AUGUSTA	BMLCT	557	LIC
13N AL BIRMINGHAM	BLCT	19801209KE	LIC
13N AL MONTGOMERY	BNPET	20020430AAC	APP
13N FL PANAMA CITY	BLCT	19900816KE	LIC
13N NC ASHEVILLE	BLCT	2599	LIC
12A GA ATHENS	BPRM	20010226ABP	APP
13A FL JACKSONVILLE	DTVPLN	DTVP0112	PLN
13A TN CHATTANOOGA	BPCDT	20010502AAO	CP

After Analysis

Results for: 13N GA MACON	BLCT	2397	LIC
	POPULATION	AREA (sq km)	
within Noise Limited Contour	678103	25905.5	
not affected by terrain losses	658816	24516.9	
lost to NTSC IX	70699	3716.3	
lost to additional IX by ATV	4927	666.2	
lost to all IX	75626	4382.5	

Potential Interferring Stations Included in above Scenario 5

12N GA AUGUSTA	BMLCT	557	LIC
13N AL BIRMINGHAM	BLCT	19801209KE	LIC
13N AL MONTGOMERY	BNPET	20020430AAC	APP
13N FL PANAMA CITY	BLCT	19900816KE	LIC
13N NC ASHEVILLE	BLCT	2599	LIC
12A GA ATHENS	BPRM	20010226ABP	APP
13A FL JACKSONVILLE	DTVPLN	DTVP0112	PLN
13A TN CHATTANOOGA	BPCDT	20010502AAO	CP
13A GA Savannah	CUR	PROPOSED	APR
*Percent new DTV interference without proposal:	0.1	BLCT	2397
*Percent new DTV interference with proposal:	0.7	BLCT	2397

Result key: 10  
Scenario 6 Affected station 6  
Before Analysis

Results for: 13N GA MACON	BLCT	2397	LIC
	POPULATION	AREA (sq km)	
within Noise Limited Contour	678103	25905.5	
not affected by terrain losses	658816	24516.9	
lost to NTSC IX	70699	3716.3	
lost to additional IX by ATV	615	20.1	
lost to all IX	71314	3736.3	

Potential Interferring Stations Included in above Scenario 6

12N GA AUGUSTA	BMLCT	557	LIC
13N AL BIRMINGHAM	BLCT	19801209KE	LIC

13N AL MONTGOMERY	BNPET	20020430AAC	APP
13N FL PANAMA CITY	BLCT	19900816KE	LIC
13N NC ASHEVILLE	BLCT	2599	LIC
12A GA ATHENS	BPRM	20010226ABP	APP
13A FL JACKSONVILLE	DTVPLN	DTVP0112	PLN
13A TN CHATTANOOGA	BPRM	20000328AAG	APP

#### After Analysis

Results for: 13N GA MACON	BLCT	2397	LIC
	POPULATION	AREA (sq km)	
within Noise Limited Contour	678103	25905.5	
not affected by terrain losses	658816	24516.9	
lost to NTSC IX	70699	3716.3	
lost to additional IX by ATV	4927	666.2	
lost to all IX	75626	4382.5	

Potential Interfering Stations Included in above Scenario 6

12N GA AUGUSTA	BMLCT	557	LIC
13N AL BIRMINGHAM	BLCT	19801209KE	LIC
13N AL MONTGOMERY	BNPET	20020430AAC	APP
13N FL PANAMA CITY	BLCT	19900816KE	LIC
13N NC ASHEVILLE	BLCT	2599	LIC
12A GA ATHENS	BPRM	20010226ABP	APP
13A FL JACKSONVILLE	DTVPLN	DTVP0112	PLN
13A TN CHATTANOOGA	BPRM	20000328AAG	APP
13A GA Savannah	CUR	PROPOSED	APR
*Percent new DTV interference without proposal:	0.1	BLCT	2397
*Percent new DTV interference with proposal:	0.7	BLCT	2397

#####

#### Analysis of Interference to Affected Station 7

#### NTSC Baseline Analysis

Channel	Call	City/State	Application	Ref. No.
13	WLOS	ASHEVILLE NC	DTVPLN	-NPLN0845

#### Stations Potentially Affecting This Station

Chan	Call	City/State	Dist(km)	Status	Application	Ref. No.
12	WYMT-DT	HAZARD KY	200.2	PLN	DTVPLN	-DTVP0101
13	WMAZTV	MACON GA	306.1	PLN	DTVPLN	-NPLN0823
13	WBKO	BOWLING GREEN KY	376.7	PLN	DTVPLN	-NPLN0833
13	WBTW	FLORENCE SC	334.4	PLN	DTVPLN	-NPLN0861
13	WSETTV	LYNCHBURG VA	349.5	PLN	DTVPLN	-NPLN0872
13	WOWKTV	HUNTINGTON WV	345.8	PLN	DTVPLN	-NPLN0875

Results for: 13N NC ASHEVILLE	DTVPLN	NPLN0845	PLN
	POPULATION	AREA (sq km)	
within Noise Limited Contour	2429022	46770.0	
not affected by terrain losses	1860498	35054.3	
lost to NTSC IX	74617	1906.2	

lost to additional IX by ATV	0	0.0
lost to all IX	74617	1906.2

#### Analysis of current record

Channel	Call	City/State	Application	Ref. No.
13	WLOS	ASHEVILLE NC	BLCT	-2599

#### Stations Potentially Affecting This Station

Chan	Call	City/State	Dist(km)	Status	Application	Ref. No.
12	WYMT-DT	HAZARD KY	200.2	CP	BPCDT	-19990823LC
12	WYMT-DT	HAZARD KY	200.2	PLN	DTVPLN	-DTPV0101
13	WMAZ-TV	MACON GA	306.1	LIC	BLCT	-2397
13	WBKO	BOWLING GREEN KY	376.6	CP	BPCT	-20001129AAG
13	WKYT-DT	LEXINGTON KY	325.4	CP MOD	BMPCDT	-20010716AAH
13	WKYTTV	LEXINGTON KY	325.4	APP	BPRM	-20000419AAF
13	WBTW	FLORENCE SC	334.4	LIC	BLCT	-19800922KH
13	WRCB-DT	CHATTANOOGA TN	233.8	CP	BPCDT	-20010502AAO
13	WRCBTV	CHATTANOOGA TN	233.9	APP	BPRM	-20000328AAG
13	WSET-TV	LYNCHBURG VA	349.5	LIC	BLCT	-19820202KE
13	WOWK-TV	HUNTINGTON WV	345.8	APP	BPCT	-20020516AAC
13	WOWK-TV	HUNTINGTON WV	345.8	LIC	BLCT	-2422
13	WVAN-D.P	Savannah GA	379.3	APR	CUR	-PROPOSED

Proposal causes no interference

#####

#### Analysis of Interference to Affected Station 8

#### NTSC Baseline Analysis

Channel	Call	City/State	Application	Ref. No.
13	WBTW	FLORENCE SC	DTVPLN	-NPLN0861

#### Stations Potentially Affecting This Station

Chan	Call	City/State	Dist(km)	Status	Application	Ref. No.
12	WCTI	NEW BERN NC	199.0	PLN	DTVPLN	-NPLN0778
13	WLOS	ASHEVILLE NC	334.4	PLN	DTVPLN	-NPLN0845
13	WVECTV	HAMPTON VA	375.1	PLN	DTVPLN	-NPLN0871
13	WSETTV	LYNCHBURG VA	328.8	PLN	DTVPLN	-NPLN0872

Results for: 13N SC FLORENCE	DTVPLN	NPLN0861	PLN
	POPULATION	AREA (sq km)	
within Noise Limited Contour	1462431	44813.9	
not affected by terrain losses	1431298	43357.8	
lost to NTSC IX	111098	4412.4	
lost to additional IX by ATV	0	0.0	
lost to all IX	111098	4412.4	

#### Analysis of current record

Channel	Call	City/State	Application	Ref. No.
13	WBTW	FLORENCE SC	BLCT	-19800922KH

#### Stations Potentially Affecting This Station



Chan	Call	City/State	Dist(km)	Status	Application	Ref. No.
12	WCTI-TV	NEW BERN NC	199.0	LIC	BLCT	-19991220ACA
13	WLOS	ASHEVILLE NC	334.4	LIC	BLCT	-2599
13	WVEC-TV	HAMPTON VA	375.0	CP	BPCT	-19980605KF
13	WSET-TV	LYNCHBURG VA	328.8	LIC	BLCT	-19820202KE
13	WVAN-D.P	Savannah GA	326.2	APR	CUR	-PROPOSED

Total scenarios = 1

Result key: 11  
 Scenario 1 Affected station 8  
 Before Analysis

Results for: 13N SC FLORENCE	BLCT	19800922KH	LIC
	POPULATION	AREA (sq km)	
within Noise Limited Contour	1462431	44813.9	
not affected by terrain losses	1431298	43357.8	
lost to NTSC IX	111542	4468.2	
lost to additional IX by ATV	0	0.0	
lost to all IX	111542	4468.2	

Potential Interfering Stations Included in above Scenario 1

12N NC NEW BERN	BLCT	19991220ACA	LIC
13N NC ASHEVILLE	BLCT	2599	LIC
13N VA HAMPTON	BPCT	19980605KF	CP
13N VA LYNCHBURG	BLCT	19820202KE	LIC

After Analysis

Results for: 13N SC FLORENCE	BLCT	19800922KH	LIC
	POPULATION	AREA (sq km)	
within Noise Limited Contour	1462431	44813.9	
not affected by terrain losses	1431298	43357.8	
lost to NTSC IX	111542	4468.2	
lost to additional IX by ATV	693	123.7	
lost to all IX	112235	4591.9	

Potential Interfering Stations Included in above Scenario 1

12N NC NEW BERN	BLCT	19991220ACA	LIC
13N NC ASHEVILLE	BLCT	2599	LIC
13N VA HAMPTON	BPCT	19980605KF	CP
13N VA LYNCHBURG	BLCT	19820202KE	LIC
13A GA Savannah	CUR	PROPOSED	APR
*Percent new DTV interference without proposal:	0.0	BLCT	19800922KH
*Percent new DTV interference with proposal:	0.0	BLCT	19800922KH

#####

Analysis of Interference to Affected Station 9

Analysis of current record

Channel	Call	City/State	Application	Ref. No.
13	WVAN-D.P	Savannah GA	CUR	-PROPOSED

Stations Potentially Affecting This Station

Chan	Call	City/State	Dist(km)	Status	Application	Ref. No.
12	WTLV	JACKSONVILLE FL	208.3	LIC	BLCT	-19860102KE
12	WRDW-TV	AUGUSTA GA	141.8	LIC	BMLCT	-557
13	WTLV	JACKSONVILLE FL	208.3	CP MOD	BMPCDT	-20000501ADK
13	WTLV-DT	JACKSONVILLE FL	208.3	PLN	DTVPLN	-DTVP0112
13	WMBB	PANAMA CITY FL	410.2	LIC	BLCT	-19900816KE
13	WMAZ-TV	MACON GA	194.1	LIC	BLCT	-2397
13	WLOS	ASHEVILLE NC	379.3	LIC	BLCT	-2599
13	WBTW	FLORENCE SC	326.2	LIC	BLCT	-19800922KH

Total scenarios = 2

Result key: 12  
Scenario 1 Affected station 9  
Before Analysis

Results for: 13A GA Savannah	CUR	PROPOSED	APR
HAAT 293.0 m, ATV ERP 20.0 kW			
	POPULATION	AREA (sq km)	
within Noise Limited Contour	613546	26246.8	
not affected by terrain losses	613149	26137.8	
lost to NTSC IX	10637	981.2	
lost to additional IX by ATV	5375	638.0	
lost to ATV IX only	7908	948.9	
lost to all IX	16012	1619.2	

Potential Interferring Stations Included in above Scenario 1

13N GA MACON	BLCT	2397	LIC	
13N NC ASHEVILLE	BLCT	2599	LIC	
13N SC FLORENCE	BLCT	19800922KH	LIC	
13A FL JACKSONVILLE	BMPCDT	20000501ADK	CP	
*Percent Service lost without proposal:	0.0	to CUR	PROPOSED	
*Percent Service lost with proposal:	0.0	to CUR	PROPOSED	

Result key: 13  
Scenario 2 Affected station 9  
Before Analysis

Results for: 13A GA Savannah	CUR	PROPOSED	APR
HAAT 293.0 m, ATV ERP 20.0 kW			
	POPULATION	AREA (sq km)	
within Noise Limited Contour	613546	26246.8	
not affected by terrain losses	613149	26137.8	
lost to NTSC IX	10637	981.2	
lost to additional IX by ATV	3384	343.2	
lost to ATV IX only	5271	541.1	
lost to all IX	14021	1324.5	

Potential Interferring Stations Included in above Scenario 2

13N GA MACON	BLCT	2397	LIC	
13N NC ASHEVILLE	BLCT	2599	LIC	
13N SC FLORENCE	BLCT	19800922KH	LIC	
13A FL JACKSONVILLE	DTVPLN	DTVP0112	PLN	
*Percent Service lost without proposal:		0.0	to CUR	PROPOSED
*Percent Service lost with proposal:		0.0	to CUR	PROPOSED

#####

FINISHED FINISHED FINISHED FINISHED FINISHED FINISHED