

PRESENT & PROPOSED DAYTIME PRIMARY SERVICE CONTOURS

WIBR - BATON ROUGE, LA - Licensed - Dashed Lines

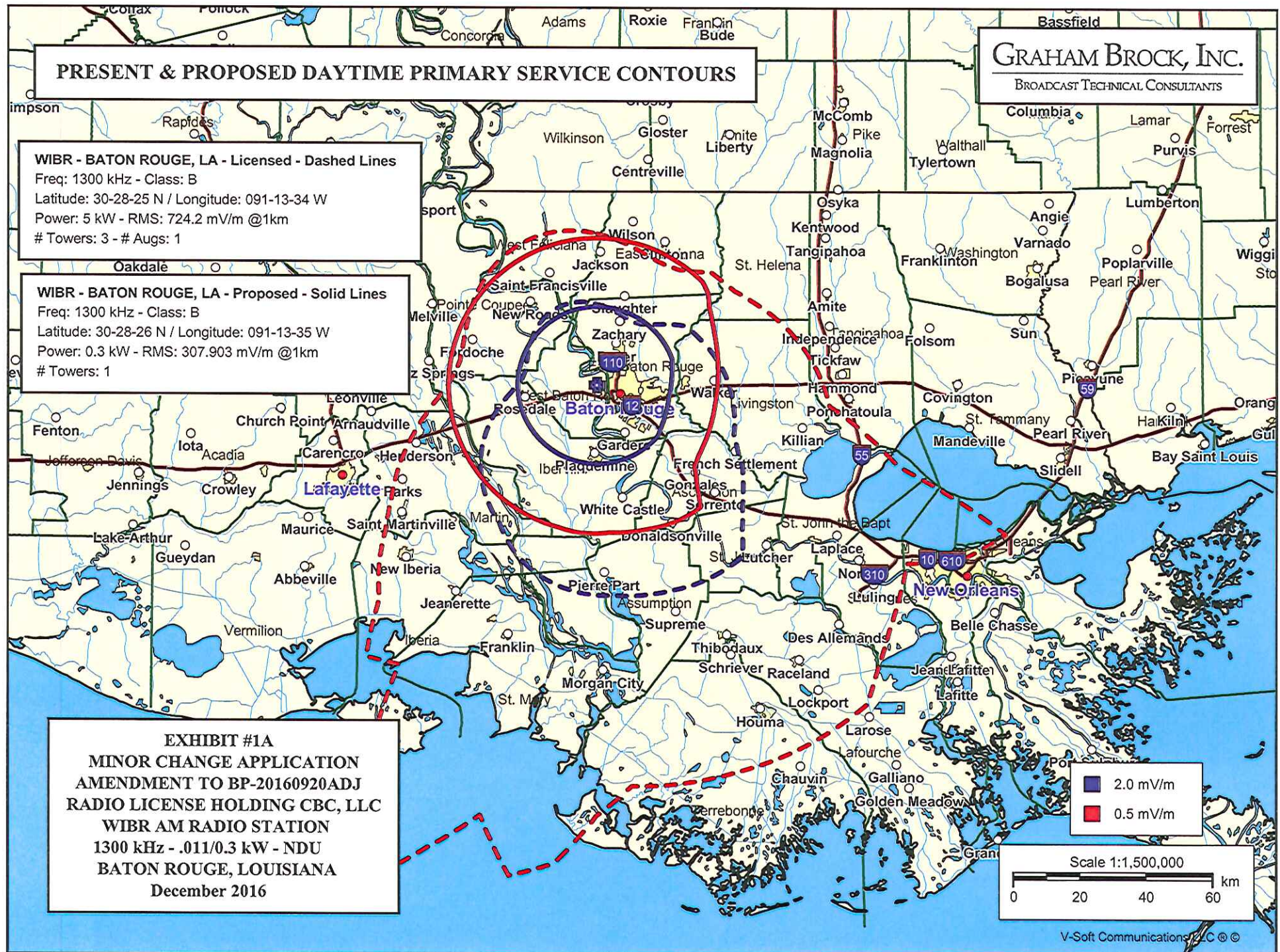
Freq: 1300 kHz - Class: B
Latitude: 30-28-25 N / Longitude: 091-13-34 W
Power: 5 kW - RMS: 724.2 mV/m @1km
Towers: 3 - # Augs: 1

WIBR - BATON ROUGE, LA - Proposed - Solid Lines

Freq: 1300 kHz - Class: B
Latitude: 30-28-26 N / Longitude: 091-13-35 W
Power: 0.3 kW - RMS: 307.903 mV/m @1km
Towers: 1

GRAHAM BROCK, INC.

BROADCAST TECHNICAL CONSULTANTS



PRESENT & PROPOSED DAYTIME CITY GRADE SERVICE CONTOURS

WIBR - BATON ROUGE, LA - Licensed - Dashed Lines
Freq: 1300 kHz - Class: B
Latitude: 30-28-25 N / Longitude: 091-13-34 W
Power: 5 kW - RMS: 724.2 mV/m @1km
Towers: 3 - # Augs: 1

WIBR - BATON ROUGE, LA - Proposed - Solid Lines
Freq: 1300 kHz - Class: B
Latitude: 30-28-26 N / Longitude: 091-13-35 W
Power: 0.3 kW - RMS: 307.903 mV/m @1km
Towers: 1

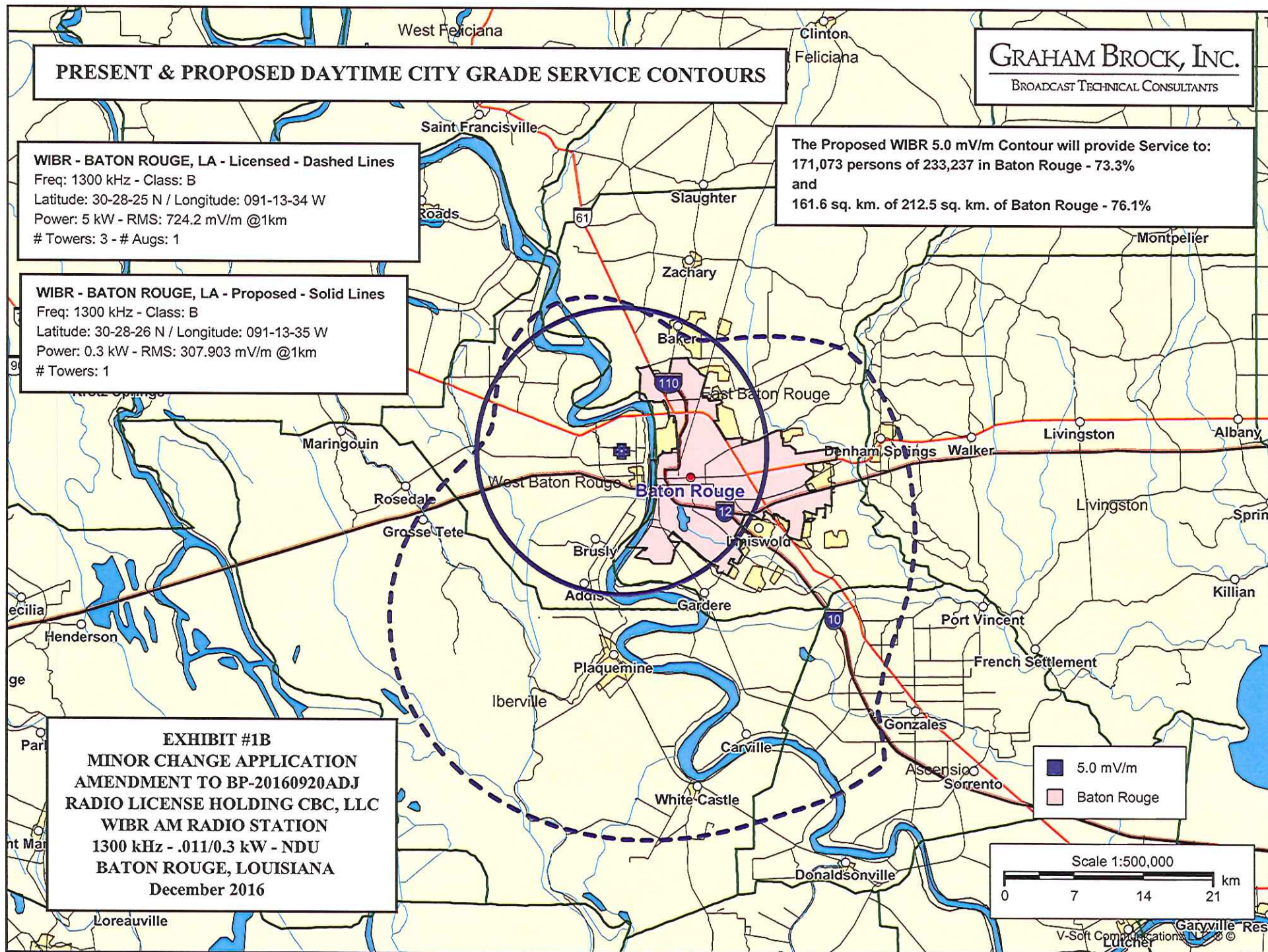
The Proposed WIBR 5.0 mV/m Contour will provide Service to:
171,073 persons of 233,237 in Baton Rouge - 73.3%
and
161.6 sq. km. of 212.5 sq. km. of Baton Rouge - 76.1%

EXHIBIT #1B
MINOR CHANGE APPLICATION
AMENDMENT TO BP-20160920ADJ
RADIO LICENSE HOLDING CBC, LLC
WIBR AM RADIO STATION
1300 kHz - .011/0.3 kW - NDU
BATON ROUGE, LOUISIANA
December 2016

5.0 mV/m
Baton Rouge

Scale 1:500,000

0 7 14 21 km



PRESENT & PROPOSED DAYTIME BANKETING CONTOURS

GRAHAM BROCK, INC.

BROADCAST TECHNICAL CONSULTANTS

WIBR - BATON ROUGE, LA - Licensed - Dashed Lines

Freq: 1300 kHz - Class: B

Latitude: 30-28-25 N / Longitude: 091-13-34 W

Power: 5 kW - RMS: 724.2 mV/m @1km

Towers: 3 - # Aucs: 1

WIBR - BATON ROUGE, LA - Proposed - Solid Lines

Freq: 1300 kHz - Class: B

Latitude: 30-28-26 N / Longitude: 091-13-35 W

Power: 0.3 kW - RMS: 307.903 mV/m @1km

Towers: 1

EXHIBIT #1C

MINOR CHANGE APPLICATION
AMENDMENT TO BP-20160920ADJ
RADIO LICENSE HOLDING CBC, LLC
WIBR AM RADIO STATION
1300 kHz - .011/0.3 kW - NDU
BATON ROUGE, LOUISIANA
December 2016

Within the Proposed WIBR 1000.0 mV/m Contour:
0 Persons - 2010 Census

1000.0 mV/m

Scale 1:24,000

0 0.33 0.67 1.0 km

PRESENT & PROPOSED NIGHTTIME INTERFERENCE FREE SERVICE CONTOURS

GRAHAM BROCK, INC.

BROADCAST TECHNICAL CONSULTANTS

WIBR - BATON ROUGE, LA - Licensed - Dashed Lines

Freq: 1300 kHz - Class: B

Latitude: 30-28-25 N / Longitude: 091-13-34 W

Power: 1 kW - RMS: 295.31 mV/m @1km

Towers: 3 - # Augs: 16

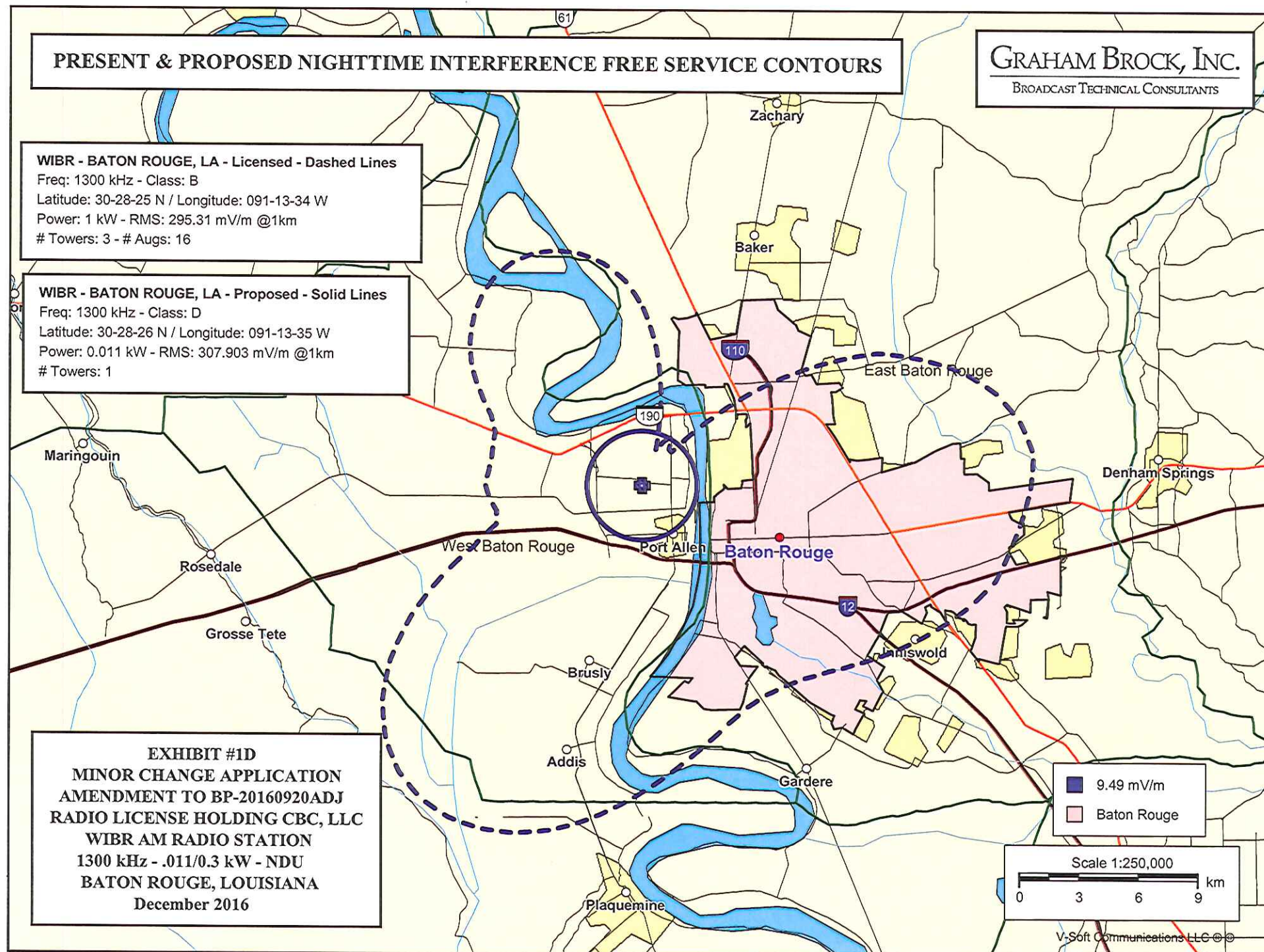
WIBR - BATON ROUGE, LA - Proposed - Solid Lines

Freq: 1300 kHz - Class: D

Latitude: 30-28-26 N / Longitude: 091-13-35 W

Power: 0.011 kW - RMS: 307.903 mV/m @1km

Towers: 1



GRAHAM BROCK, INC.

BROADCAST TECHNICAL CONSULTANTS

PRESENT & PROPOSED NIGHTTIME BLANKETING CONTOURS

WIBR - BATON ROUGE, LA - Licensed - Dashed Lines

Freq: 1300 kHz - Class: B

Latitude: 30-28-25 N / Longitude: 091-13-34 W

Power: 1 kW - RMS: 295.31 mV/m @1km

Towers: 3 - # Augs: 16

WIBR - BATON ROUGE, LA - Proposed - Solid Lines

Freq: 1300 kHz - Class: D

Latitude: 30-28-26 N / Longitude: 091-13-35 W

Power: 0.011 kW - RMS: 307.903 mV/m @1km

Towers: 1

EXHIBIT #1E

**MINOR CHANGE APPLICATION
AMENDMENT TO BP-20160920ADJ
RADIO LICENSE HOLDING CBC, LLC
WIBR AM RADIO STATION
1300 kHz - .011/0.3 kW - NDU
BATON ROUGE, LOUISIANA
December 2016**

Within the Proposed 1000.0 mV/m Contour
0 Persons - 2010 Census

9.49 mV/m
Baton Rouge

Scale 1:24,000

0 0.33 0.67 1.0 km

Copyright © 2016 Soft Communications LLC

MINOR CHANGE APPLICATION
AMENDMENT TO BP-20160920ADJ
RADIO LICENSE HOLDING CBC, LLC
WIBR AM RADIO STATION
1300 kHz - .011/0.3 kW - NDU
BATON ROUGE, LOUISIANA
December 2016

EXHIBIT #1F

Proposed Daytime Service Contours

North Latitude: 30° 28' 26"
West Longitude: 91° 13' 35"

Azimuth	Radiation (mV/m at one km)	Distances to Contours in Kilometers :			
		Contour levels in mV/m.			
		1000.000	5.000	2.000	.500
0.0	168.65	0.16	14.51	23.75	44.49
5.0	168.65	0.16	14.51	23.75	44.49
10.0	168.65	0.16	14.51	23.75	44.49
15.0	168.65	0.16	14.51	23.75	44.49
20.0	168.65	0.16	14.51	23.75	44.49
25.0	168.65	0.16	14.51	23.75	44.49
30.0	168.65	0.16	14.51	23.75	44.49
35.0	168.65	0.16	14.51	23.75	44.49
40.0	168.65	0.16	14.51	23.75	44.49
45.0	168.65	0.16	14.51	23.75	44.49
50.0	168.65	0.16	14.51	23.75	43.28
55.0	168.65	0.16	14.51	23.75	40.92
60.0	168.65	0.16	14.51	23.75	39.59
65.0	168.65	0.16	14.51	23.75	38.57
70.0	168.65	0.16	14.51	23.75	37.79
75.0	168.65	0.16	14.51	23.20	37.18
80.0	168.65	0.16	14.51	22.72	36.70
85.0	168.65	0.16	14.51	22.35	36.32
90.0	168.65	0.16	14.51	22.05	36.03
95.0	168.65	0.16	14.51	21.83	35.81
100.0	168.65	0.16	14.51	21.75	35.72
105.0	168.65	0.16	14.51	21.87	35.85
110.0	168.65	0.16	14.51	22.06	36.04
115.0	168.65	0.16	14.51	22.31	36.29
120.0	168.65	0.16	14.51	22.64	36.62
125.0	168.65	0.16	14.51	23.07	37.04
130.0	168.65	0.16	14.51	23.75	38.09
135.0	168.65	0.16	14.51	23.75	42.33
140.0	168.65	0.16	14.51	23.75	48.13
145.0	168.65	0.16	14.51	23.75	47.87
150.0	168.65	0.16	14.51	23.75	47.47
155.0	168.65	0.16	14.51	23.75	46.91
160.0	168.65	0.16	14.51	23.75	46.18
165.0	168.65	0.16	14.51	23.75	45.68
170.0	168.65	0.16	14.51	23.75	45.22
175.0	168.65	0.16	14.51	23.75	44.76

Ground Conductivity : FCC M-3

MINOR CHANGE APPLICATION
AMENDMENT TO BP-20160920ADJ
RADIO LICENSE HOLDING CBC, LLC
WIBR AM RADIO STATION
1300 kHz - .011/0.3 kW - NDU
BATON ROUGE, LOUISIANA
December 2016

EXHIBIT #1F (continued)

Proposed Daytime Service Contours

North Latitude: 30° 28' 26"
West Longitude: 91° 13' 35"

Azimuth	Radiation (mV/m at one km)	Distances to Contours in Kilometers :			
		Contour levels in mV/m.			
		1000.000	5.000	2.000	.500
180.0	168.65	0.16	14.51	23.75	44.92
185.0	168.65	0.16	14.51	23.75	44.94
190.0	168.65	0.16	14.51	23.75	44.80
195.0	168.65	0.16	14.51	23.75	44.50
200.0	168.65	0.16	14.51	23.75	44.49
205.0	168.65	0.16	14.51	23.75	44.49
210.0	168.65	0.16	14.51	23.75	44.49
215.0	168.65	0.16	14.51	23.75	44.49
220.0	168.65	0.16	14.51	23.75	44.49
225.0	168.65	0.16	14.51	23.75	44.49
230.0	168.65	0.16	14.51	23.75	44.49
235.0	168.65	0.16	14.51	23.75	44.49
240.0	168.65	0.16	14.51	23.75	44.49
245.0	168.65	0.16	14.51	23.75	44.49
250.0	168.65	0.16	14.51	23.75	44.49
255.0	168.65	0.16	14.51	23.75	44.49
260.0	168.65	0.16	14.51	23.75	44.49
265.0	168.65	0.16	14.51	23.75	44.49
270.0	168.65	0.16	14.51	23.75	44.49
275.0	168.65	0.16	14.51	23.75	44.49
280.0	168.65	0.16	14.51	23.75	44.49
285.0	168.65	0.16	14.51	23.75	44.49
290.0	168.65	0.16	14.51	23.75	44.49
295.0	168.65	0.16	14.51	23.75	44.49
300.0	168.65	0.16	14.51	23.75	44.49
305.0	168.65	0.16	14.51	23.75	44.49
310.0	168.65	0.16	14.51	23.75	44.49
315.0	168.65	0.16	14.51	23.75	44.49
320.0	168.65	0.16	14.51	23.75	44.49
325.0	168.65	0.16	14.51	23.75	44.49
330.0	168.65	0.16	14.51	23.75	44.49
335.0	168.65	0.16	14.51	23.75	44.49
340.0	168.65	0.16	14.51	23.75	44.49
345.0	168.65	0.16	14.51	23.75	44.49
350.0	168.65	0.16	14.51	23.75	44.49
355.0	168.65	0.16	14.51	23.75	44.49

Ground Conductivity : FCC M-3

MINOR CHANGE APPLICATION
AMENDMENT TO BP-20160920ADJ
RADIO LICENSE HOLDING CBC, LLC
WIBR AM RADIO STATION
1300 kHz - .011/0.3 kW - NDU
BATON ROUGE, LOUISIANA
December 2016

EXHIBIT #1G

Present Daytime Service Contours

North Latitude: 30° 28' 25"
 West Longitude: 91° 13' 34"

Azimuth	Radiation (mV/m at one km)	Distances to Contours in Kilometers :			
		Contour levels in mV/m.			
		1000.000	5.000	2.000	.500
0.0	180.93	0.18	15.11	24.59	45.83
5.0	172.18	0.17	14.68	24.00	44.88
10.0	163.59	0.16	14.25	23.40	43.92
15.0	155.70	0.15	13.84	22.82	43.01
20.0	149.14	0.15	13.49	22.34	42.23
25.0	145.07	0.14	13.27	22.02	41.74
30.0	145.57	0.14	13.29	22.06	41.80
35.0	153.79	0.15	13.74	22.68	42.79
40.0	173.09	0.17	14.73	24.06	44.98
45.0	205.52	0.20	16.25	26.16	48.35
50.0	251.24	0.24	18.16	28.77	49.00
55.0	309.02	0.30	20.28	31.65	50.06
60.0	376.96	0.36	22.46	32.75	52.32
65.0	452.85	0.43	24.60	33.71	54.92
70.0	534.07	0.50	25.68	34.84	57.65
75.0	618.24	0.58	26.33	36.04	60.38
80.0	703.02	0.66	27.00	37.24	63.01
85.0	786.17	0.73	27.68	38.40	65.49
90.0	865.68	0.80	28.34	39.50	67.76
95.0	939.87	0.86	28.95	40.51	69.82
100.0	1007.45	0.92	29.60	41.51	81.06
105.0	1067.59	0.97	30.35	42.56	93.28
110.0	1119.86	1.02	31.07	43.53	130.24
115.0	1164.25	1.06	31.76	46.39	122.03
120.0	1201.05	1.09	32.44	50.27	107.13
125.0	1230.81	1.11	33.14	53.35	110.65
130.0	1254.21	1.13	34.24	56.79	114.44
135.0	1272.01	1.15	36.09	61.48	119.39
140.0	1284.92	1.16	41.01	67.61	125.71
145.0	1293.60	1.16	40.92	67.58	125.81
150.0	1298.52	1.17	40.62	67.31	125.61
155.0	1299.99	1.17	40.09	66.79	125.11
160.0	1298.11	1.17	39.80	66.00	124.30
165.0	1292.76	1.16	39.73	65.37	123.59
170.0	1283.61	1.16	39.60	64.67	122.76
175.0	1270.14	1.14	39.43	63.86	121.74

Ground Conductivity : FCC M-3

MINOR CHANGE APPLICATION
AMENDMENT TO BP-20160920ADJ
RADIO LICENSE HOLDING CBC, LLC
WIBR AM RADIO STATION
1300 kHz - .011/0.3 kW - NDU
BATON ROUGE, LOUISIANA
December 2016

EXHIBIT #1G (continued)

North Latitude: 30° 28' 25"
West Longitude: 91° 13' 34"

Azimuth	Radiation (mV/m at one km)	Distances to Contours in Kilometers :			
		Contour levels in mV/m.			
		1000.000	5.000	2.000	.500
180.0	1251.72	1.13	39.18	63.54	130.33
185.0	1227.59	1.11	38.85	62.91	145.34
190.0	1197.02	1.08	38.42	61.95	150.81
195.0	1159.33	1.05	37.89	60.61	134.78
200.0	1114.01	1.01	37.24	58.86	149.35
205.0	1060.78	0.97	36.45	56.68	166.10
210.0	999.72	0.92	35.51	54.00	140.79
215.0	931.30	0.86	34.42	50.93	103.23
220.0	856.40	0.79	33.15	49.18	107.29
225.0	776.35	0.72	31.72	47.20	92.02
230.0	692.89	0.65	30.11	45.00	85.11
235.0	608.06	0.57	28.33	42.58	77.27
240.0	524.12	0.50	26.41	39.96	71.19
245.0	443.41	0.42	24.35	37.16	66.46
250.0	368.35	0.35	22.20	34.25	61.57
255.0	301.51	0.29	20.02	31.29	56.69
260.0	245.09	0.24	17.92	28.44	52.03
265.0	200.92	0.20	16.04	25.88	47.89
270.0	170.10	0.17	14.58	23.85	44.65
275.0	152.28	0.15	13.66	22.57	42.61
280.0	145.17	0.14	13.27	22.03	41.75
285.0	145.37	0.14	13.28	22.05	41.77
290.0	149.83	0.15	13.52	22.39	42.32
295.0	156.59	0.15	13.88	22.89	43.11
300.0	164.60	0.16	14.30	23.47	44.03
305.0	173.23	0.17	14.73	24.07	45.00
310.0	181.97	0.18	15.16	24.66	45.94
315.0	190.24	0.19	15.56	25.20	46.81
320.0	197.45	0.19	15.89	25.66	47.54
325.0	203.03	0.20	16.14	26.01	48.10
330.0	206.51	0.20	16.29	26.22	48.44
335.0	207.61	0.20	16.34	26.28	48.55
340.0	206.22	0.20	16.28	26.20	48.42
345.0	202.46	0.20	16.11	25.97	48.04
350.0	196.66	0.19	15.85	25.61	47.46
355.0	189.29	0.18	15.51	25.14	46.71

Ground Conductivity: FCC M-3

MINOR CHANGE APPLICATION
AMENDMENT TO BP-20160920ADJ
RADIO LICENSE HOLDING CBC, LLC
WIBR AM RADIO STATION
1300 kHz - .011/0.3 kW - NDU
BATON ROUGE, LOUISIANA
December 2016

EXHIBIT #1H

Proposed Nighttime Service Contours

North Latitude: 30° 28' 26"
West Longitude: 91° 13' 35"

Azimuth	Radiation (mV/m at one km)	Dist to Contours - km: Contour levels in mV/m.		Azimuth	Radiation (mV/m at one km)	Dist to Contours - km: Contour levels in mV/m.	
		1000.000	* 9.485			1000.000	* 9.485
0.0	32.29	0.10	2.76	180.0	32.29	0.10	2.76
5.0	32.29	0.10	2.76	185.0	32.29	0.10	2.76
10.0	32.29	0.10	2.76	190.0	32.29	0.10	2.76
15.0	32.29	0.10	2.76	195.0	32.29	0.10	2.76
20.0	32.29	0.10	2.76	200.0	32.29	0.10	2.76
25.0	32.29	0.10	2.76	205.0	32.29	0.10	2.76
30.0	32.29	0.10	2.76	210.0	32.29	0.10	2.76
35.0	32.29	0.10	2.76	215.0	32.29	0.10	2.76
40.0	32.29	0.10	2.76	220.0	32.29	0.10	2.76
45.0	32.29	0.10	2.76	225.0	32.29	0.10	2.76
50.0	32.29	0.10	2.76	230.0	32.29	0.10	2.76
55.0	32.29	0.10	2.76	235.0	32.29	0.10	2.76
60.0	32.29	0.10	2.76	240.0	32.29	0.10	2.76
65.0	32.29	0.10	2.76	245.0	32.29	0.10	2.76
70.0	32.29	0.10	2.76	250.0	32.29	0.10	2.76
75.0	32.29	0.10	2.76	255.0	32.29	0.10	2.76
80.0	32.29	0.10	2.76	260.0	32.29	0.10	2.76
85.0	32.29	0.10	2.76	265.0	32.29	0.10	2.76
90.0	32.29	0.10	2.76	270.0	32.29	0.10	2.76
95.0	32.29	0.10	2.76	275.0	32.29	0.10	2.76
100.0	32.29	0.10	2.76	280.0	32.29	0.10	2.76
105.0	32.29	0.10	2.76	285.0	32.29	0.10	2.76
110.0	32.29	0.10	2.76	290.0	32.29	0.10	2.76
115.0	32.29	0.10	2.76	295.0	32.29	0.10	2.76
120.0	32.29	0.10	2.76	300.0	32.29	0.10	2.76
125.0	32.29	0.10	2.76	305.0	32.29	0.10	2.76
130.0	32.29	0.10	2.76	310.0	32.29	0.10	2.76
135.0	32.29	0.10	2.76	315.0	32.29	0.10	2.76
140.0	32.29	0.10	2.76	320.0	32.29	0.10	2.76
145.0	32.29	0.10	2.76	325.0	32.29	0.10	2.76
150.0	32.29	0.10	2.76	330.0	32.29	0.10	2.76
155.0	32.29	0.10	2.76	335.0	32.29	0.10	2.76
160.0	32.29	0.10	2.76	340.0	32.29	0.10	2.76
165.0	32.29	0.10	2.76	345.0	32.29	0.10	2.76
170.0	32.29	0.10	2.76	350.0	32.29	0.10	2.76
175.0	32.29	0.10	2.76	355.0	32.29	0.10	2.76

* - Nighttime Interference Free Contour

GROUND CONDUCTIVITY: FCC M-3

MINOR CHANGE APPLICATION
AMENDMENT TO BP-20160920ADJ
RADIO LICENSE HOLDING CBC, LLC
WIBR AM RADIO STATION
1300 kHz - .011/0.3 kW - NDU
BATON ROUGE, LOUISIANA
December 2016

EXHIBIT #1I

Present Nighttime Service Contours

North Latitude: 30° 28' 25"
West Longitude: 91° 13' 34"

Azimuth	Radiation (mV/m at one km)	Dist to Contours km:		Azimuth	Radiation (mV/m at one km)	Dist to Contours km:	
		1000.000	* 9.485			1000.000	* 9.485
0.0	150.41	0.15	9.02	180.0	359.17	0.34	15.51
5.0	108.94	0.11	7.20	185.0	395.44	0.38	16.38
10.0	69.20	0.10	5.14	190.0	434.22	0.41	17.26
15.0	36.96	0.10	3.09	195.0	471.29	0.45	18.05
20.0	20.49	0.10	1.86	200.0	502.55	0.48	18.69
25.0	28.78	0.10	2.50	205.0	525.63	0.50	19.14
30.0	33.80	0.10	2.87	210.0	537.84	0.51	19.38
35.0	25.93	0.10	2.28	215.0	535.29	0.51	19.33
40.0	25.40	0.10	2.24	220.0	514.87	0.49	18.93
45.0	64.37	0.10	4.86	225.0	476.27	0.45	18.15
50.0	123.54	0.12	7.87	230.0	421.31	0.40	16.97
55.0	195.48	0.19	10.72	235.0	354.03	0.34	15.38
60.0	284.85	0.27	13.54	240.0	280.54	0.27	13.42
65.0	352.30	0.34	15.34	245.0	208.84	0.20	11.18
70.0	425.24	0.41	17.06	250.0	148.92	0.15	8.96
75.0	485.68	0.46	18.35	255.0	117.04	0.11	7.58
80.0	529.03	0.50	19.21	260.0	113.60	0.11	7.42
85.0	552.99	0.52	19.66	265.0	119.37	0.12	7.68
90.0	557.48	0.53	19.46	270.0	123.63	0.12	7.88
95.0	544.99	0.51	19.09	275.0	120.87	0.12	7.75
100.0	519.42	0.49	18.69	280.0	119.49	0.12	7.69
105.0	484.78	0.46	18.33	285.0	121.02	0.12	7.76
110.0	445.24	0.42	17.50	290.0	123.34	0.12	7.86
115.0	404.72	0.39	16.60	295.0	135.05	0.13	8.38
120.0	366.53	0.35	15.69	300.0	159.60	0.16	9.38
125.0	331.58	0.32	14.81	305.0	188.26	0.18	10.46
130.0	299.65	0.29	13.96	310.0	212.77	0.21	11.31
135.0	273.27	0.26	13.21	315.0	233.73	0.23	12.00
140.0	254.91	0.25	12.66	320.0	251.36	0.24	12.56
145.0	244.44	0.24	12.34	325.0	263.26	0.25	12.91
150.0	240.95	0.23	12.23	330.0	267.63	0.26	13.04
155.0	245.29	0.24	12.37	335.0	264.37	0.26	12.95
160.0	257.84	0.25	12.75	340.0	254.23	0.25	12.64
165.0	276.51	0.27	13.30	345.0	237.73	0.23	12.13
170.0	299.58	0.29	13.95	350.0	215.75	0.21	11.41
175.0	327.01	0.31	14.69	355.0	187.02	0.18	10.42

* - Nighttime Interference Free Contour
GROUND CONDUCTIVITY - FCC M-3

WIBR

Day and Night 1000 mV/m Contours

EXHIBIT #1J
MINOR CHANGE APPLICATION
AMENDMENT TO BP-20160920ADJ
RADIO LICENSE HOLDING CBC, LLC
WIBR AM RADIO STATION
1300 kHz - .011/0.3 kW - NDU
BATON ROUGE, LOUISIANA
December 2016

Google Earth

1000 ft



MINOR CHANGE APPLICATION
AMENDMENT TO BP-20160920ADJ
RADIO LICENSE HOLDING CBC, LLC
WIBR AM RADIO STATION
1300 kHz - .011/0.3 kW - NDU
BATON ROUGE, LOUISIANA
December 2016

EXHIBIT #1K

ID Stations Study at 30 28 26 N, 91 13 35 W, Search Distance = 16 km

Call	Service	City	State	Chan.	Power	Coordinates	Dist-km	Azimuth	File Number	
AM										
WIBR	D	BATON ROUGE	LA	1300	0005.000kW	302825N 911334W	000.0	139.5	BL14456	AM
WXOK	D	PORT ALLEN	LA	1460	0004.700kW	302825N 911334W	000.0	139.5	BL20090709AOZ	AM
WPYR	D	BATON ROUGE	LA	1380	0005.000kW	302739N 911323W	001.5	167.6	BML20120201ASD	AM
KBRH	D	BATON ROUGE	LA	1260	0005.000kW	302738N 911437W	002.2	228.1	BL19990125DD	AM
WPFC	D	BATON ROUGE	LA	1550	0005.000kW	303007N 911239W	003.5	025.5	BL	AM
WJBO	D	BATON ROUGE	LA	1150	0015.000kW	302747N 911610W	004.3	253.7	BML20120914AET	AM
FM										
KRVE	M	Brusly	LA	241C2	0005.000kW	302738N 911324W	001.5	168.8	BSTA20160815AAT	FM
K237EW	X	Port Allen	LA	237D	0000.250kW	302935N 911439W	002.7	321.4	BLFT20070308ABD	FM
WBRH	M	Baton Rouge	LA	212C3	0003.500kW	302636N 911054W	005.5	128.4	BLED20111003AMP	FM
K249DV	X	Baton Rouge	LA	249D	0000.250kW	302556N 911107W	006.1	139.6	BLFT20130107ABS	FM
WTQT-L	L	Baton Rouge	LA	291L1	0000.071kW	302641N 910920W	007.5	115.5	BLL20131125ADT	FM
KLSU	M	Baton Rouge	LA	216C3	0023.000kW	302437N 911037W	008.5	146.2	BLED20160401AAZ	FM
WLMZ-L	L	Baton Rouge	LA	253L1	0000.100kW	302709N 910818W	008.8	105.7	BNPL20131112AFB	FM
WHYR-L	L	Baton Rouge	LA	245L1	0000.025kW	302659N 910754W	009.5	106.5	BLL20110624AAA	FM
WRKF	M	Baton Rouge	LA	207C1	0028.000kW	302222N 911216W	011.4	169.4	BLED19910718KA	FM
WDGL	M	Baton Rouge	LA	251C	0100.000kW	302158N 911247W	012.0	173.9	BLH20160113ABS	FM
WTGE	M	Baton Rouge	LA	264C	0100.000kW	302158N 911247W	012.0	173.9	BLH20160113ABQ	FM
WMIY-L	L	Baton Rouge	LA	226L1	0000.100kW	302234N 910930W	012.7	149.0	BLL20150721ABO	FM
173970	L	Baton Rouge	LA	271L1	0000.021kW	302539N 910444W	015.1	110.0	BNPL20131114AQC	FM
K279AL	X	Baton Rouge	LA	279D	0000.019kW	302539N 910444W	015.1	110.0	BMLFT20160509AAQ	FM
W266CD	X	Baton Rouge	LA	266D	0000.027kW	302539N 910444W	015.1	110.0	BLFT20160425AAC	FM
WBRJ-L	L	Baton Rouge	LA	247L1	0000.095kW	302459N 910503W	015.1	115.1	BLL20100210AAI	FM
K258CH	X	Baker	LA	258D	0000.250kW	303605N 910924W	015.6	025.2	BLFT20160506AAH	FM
WBRP	M	Baker	LA	297A	0004.270kW	302826N 910338W	015.9	090.0	BLH20040120ADC	FM
TV										
WBXH-C	F	Baton Rouge	LA	39 D	0008.800kW	302636N 911054W	005.5	128.4	BLDTA20141104ADN	TV
KBTR-C	F	Baton Rouge	LA	41 D	0015.000kW	302556N 911107W	006.1	139.6	BLANK0000001582	TV
200332	G	Baton Rouge	LA	03	0000.005kW	302442N 911102W	008.0	149.5	BLANK00000011244	TV
KPBN-L	G	Baton Rouge	LA	14 D	0015.000kW	302700N 910759W	009.3	106.5	BLEDL20100111ADP	TV
WLFB-D	T	Baton Rouge	LA	25 3E	0355.000kW	302222N 911216W	011.4	169.4	BLEDL20101201ALR	TV
WAFB-D	T	Baton Rouge	LA	09 3C	0005.570kW	302158N 911247W	012.0	173.9	BLCDT20090622AAU	TV
KPBN-L	X	Baton Rouge	LA	11-T	0000.195kW	302602N 910509W	014.2	108.2	BLTVL19960409JB	TV

WIBR

Property Plat and Ground System

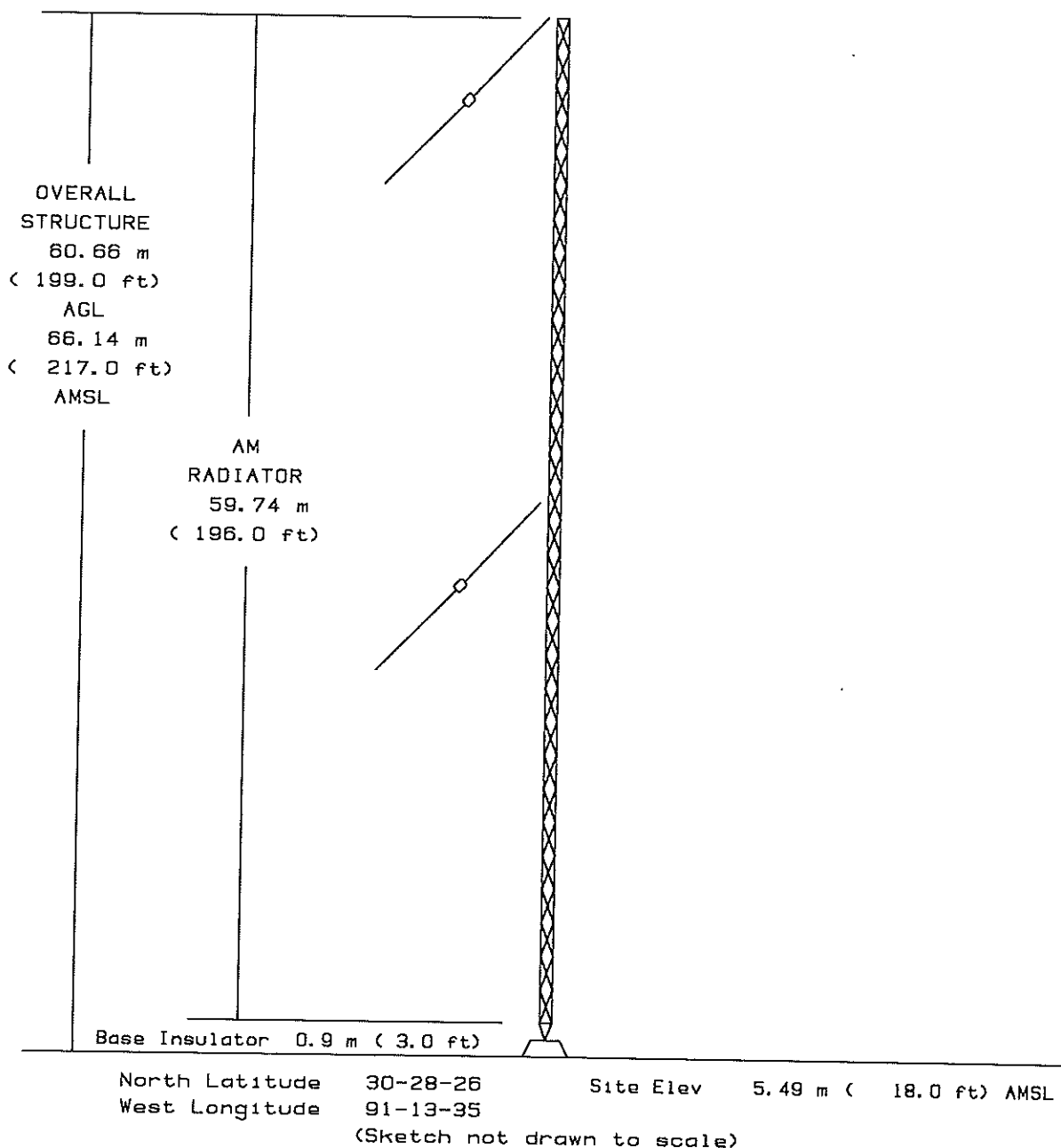
EXHIBIT #1L
MINOR CHANGE APPLICATION
AMENDMENT TO BP-20160920ADJ
RADIO LICENSE HOLDING CBC, LLC
WIBR AM RADIO STATION
1300 kHz - .011/0.3 kW - NDU
BATON ROUGE, LOUISIANA
December 2016

Extent of Ground System

Google Earth

800 ft





VERTICAL PLAN SKETCH

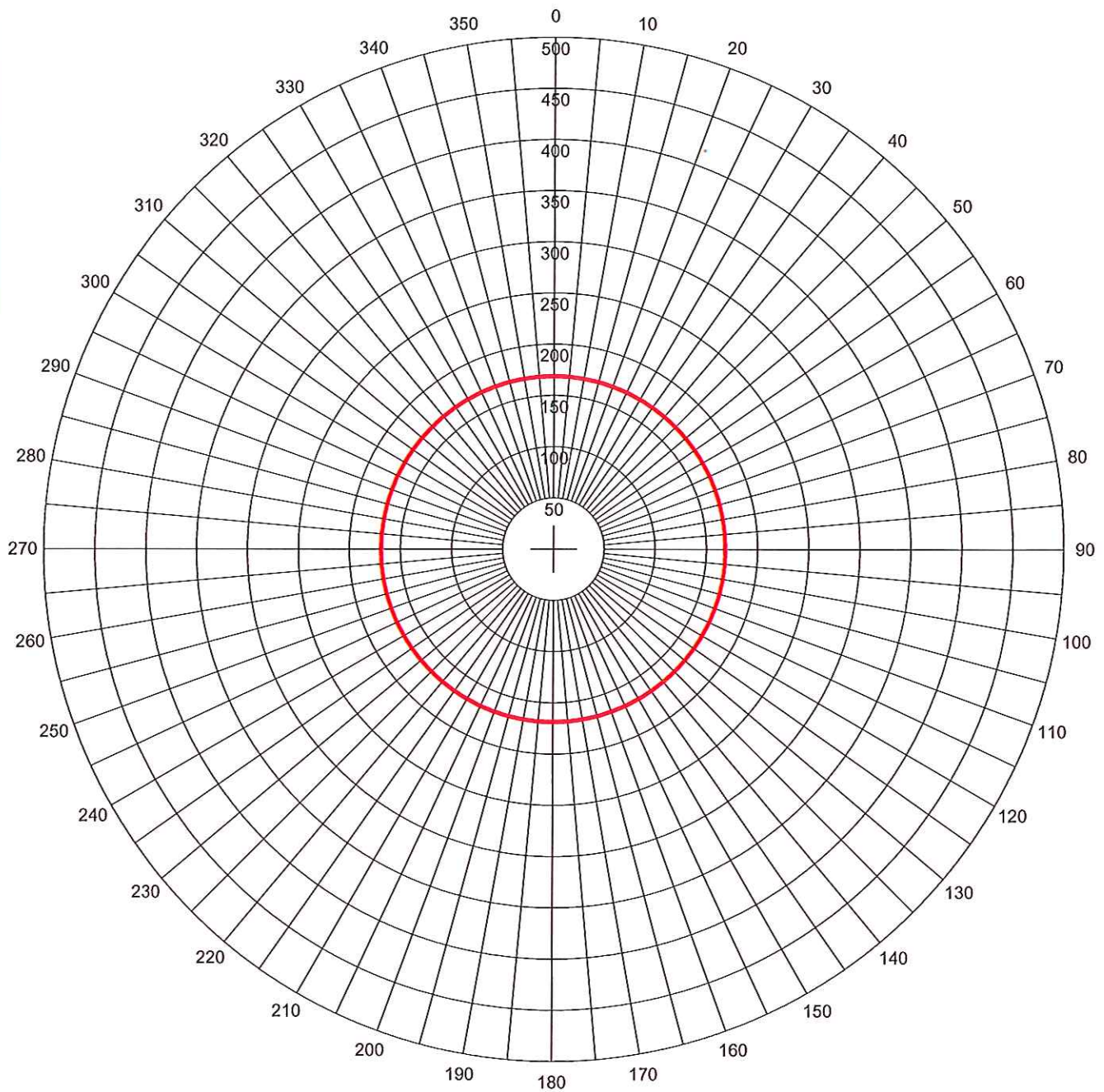
SITE ELEVATION - 5 m (18 ft) AMSL
TOP OF STRUCTURE - 61 m (199 ft) AGL
66 m (217 ft) AMSL
AM Radiator - 60 m (196 ft)

FIGURES ROUNDED TO NEAREST METER (FOOT).

EXHIBIT #1M
MINOR CHANGE APPLICATION
AMENDMENT TO BP-20160920ADJ
RADIO LICENSE HOLDING CBC, LLC
WIBR AM RADIO STATION
1300 kHz - .011/0.3 kW - NDU
BATON ROUGE, LOUISIANA
December 2016

GRAHAM BROCK, INC.

BROADCAST TECHNICAL CONSULTANTS



Erss = 168.65 mV/m@1km
 Theo RMS: 168.645 mV/m@1km

Theoretical Horizontal Plane Pattern

— Pattern (mV/m @ 1km)
 — Pattern X10

#	Field Ratio	Phase (deg)	Spacing (deg)	Orient (deg)	Height (deg)	Ref Switch	TL Switch	A (deg)	B (deg)	C (deg)	D (deg)
1	1.000	0.0	0.0	0.0	93.2	0	0	0.0	0.0	0.0	0.0

Call: WIBR
 Freq: 1300 kHz
 BATON ROUGE, LA, US
 Hours: D
 Lat: 30-28-25 N
 Lng: 091-13-34 W
 Power: 0.3 kW
 Theo RMS: 307.90 mV/m@1km

EXHIBIT #1N
MINOR CHANGE APPLICATION
AMENDMENT TO BP-20160920ADJ
RADIO LICENSE HOLDING CBC, LLC
WIBR AM RADIO STATION
1300 kHz - .011/0.3 kW - NDU
BATON ROUGE, LOUISIANA
December 2016