

Channel Study

REFERENCE		CH# 296D - 107.1 MHz, Pwr= 0.019 kW, HAAT= 77.1 M, COR= 113 M								DISPLAY DATES	
38 40 21.0 N.		Average Protected F(50-50)= 6.0 km								DATA	09-28-09
121 19 51.0 W.										SEARCH	09-28-09
CH CITY	CALL	TYPE STATE	ANT	AZI. <--	DIST FILE #	LAT. LNG.	Pwr(kW) HAAT(M)	INT(km) COR(M)	PRO(km) LICENSEE	*IN* (Overlap in km)	*OUT*
293B Sacramento	KBZC	LIC CA	CY	99.2 279.4	21.22 BLH19830216AD	38 38 30.0 121 05 25.0	50.000 125	7.3 299	73.1 Entercom Sacramento	9.13	-52.48*
297B Stockton	KSTN-FM	LIC CA	HX	202.7 22.4	102.34 BMLH20060721AAP	37 49 17.0 121 46 49.0	8.100 491	97.3 713	81.0 San Joaquin Broadcasting C	-1.46	8.47
295D Elk Grove	649728	APP CA	C	183.6 3.6	24.38 BNPFT20030317MNK	38 27 12.0 121 20 54.0	0.250	15.0 87	10.7 Eastern Sierra Broadcastin	2.94	4.69
295D Florin	641591	APP CA	C	183.6 3.6	24.38 BNPFT20030317EOF	38 27 12.0 121 20 54.0	0.023	8.8 96	6.2 Educational Media Foundati	9.20	9.15
298A Sutter Creek	DKSAC	VAC CA	N	124.0 304.3	55.69	38 23 30.0 120 48 06.0	6.000 100	3.9 479	42.7	46.36	12.71
295C Incline Village	KRNO	LIC NV	CY	60.0 240.9	144.01 BMLH20010806AAN	39 18 38.0 119 53 01.0	37.000 911	126.5 2987	86.1 Americom Las Vegas Limited	13.24	51.78
296D Yuba City	K296EX	LIC CA	DC	324.7 144.4	72.76 BLFT20080805AAX	39 12 20.0 121 49 09.0	0.010	51.0 651	13.9 Educational Media Foundati	15.46	37.83
295B San Francisco	KFRC-FM	LIC CA	C	228.5 47.8	136.87 BMLH20050811ABJ	37 51 04.0 122 29 50.0	80.000 305	109.1 369	88.2 Cbs Radio Stations Inc.	21.10	35.43
298B Colusa	KQPT	LIC CA	CN	308.6 128.0	110.56 BLH19860925KB	39 17 17.0 122 20 02.0	28.000 193	7.6 410	78.4 Mapleton License Of Chico,	96.43	31.57
299D Pleasanton, Etc.	KSAN-FM1	LIC CA	HN	210.4 30.1	101.69 BLFTB19900803TD	37 52 55.0 121 55 05.0	0.185	1.0 1155	37.9 Susquehanna Radio Corp.	94.13	63.52
296A Cloverdale	KSRT	LIC CA	CX	276.4 95.3	150.15 BLH20020509AAT	38 48 34.0 123 02 56.0	3.500 131	78.5 471	25.2 Lazer Licenses, Llc	64.96	102.55

Terrain database is NGDC 30 SEC Distance + R = 73.215 or FCC spacings in KM, Distance + M = Margin in KM  
Contour distances are on direct line to and from reference station. Reference Zone = 1A. With 3rd Adj  
Channels.

Ant Column: (D= DA Standard, Z= DA 73.215, N= Not DA 73.215, \_= Omni), Polarization (C,H,V,E),  
Beamtilt(Y,N,X)

""affixed to 'IN' or 'OUT' values = site inside protected contour

**Compliance with C.F.R. 74.1204**

The proposed FM Translator is located within the protected 60 dBu contour of second adjacent channel station KBZC channel 293B, Sacramento, CA. The predicted F(50-50) field strength of KBZC at the proposed translator site is 81.7 dBu, (see Exhibit 12A-1). Therefore, the respective predicted interfering contour generated by the proposed FM Translator is 121.7 dBu. This interfering contour extends approximately 25.1 meters from the proposed transmit antenna, and the area of overlap does not reach the ground (the antenna will be mounted at the 82 meter level on a 109 meter tower).

To confirm the absence of population within the interference aperture, EMF has examined the attached topographic map (see Exhibit 12A-2) and aerial photo (see Exhibit 12A-3), which indicate a lack of structures near the proposed tower which could be tall enough to enter the 25.1 meter interference aperture.

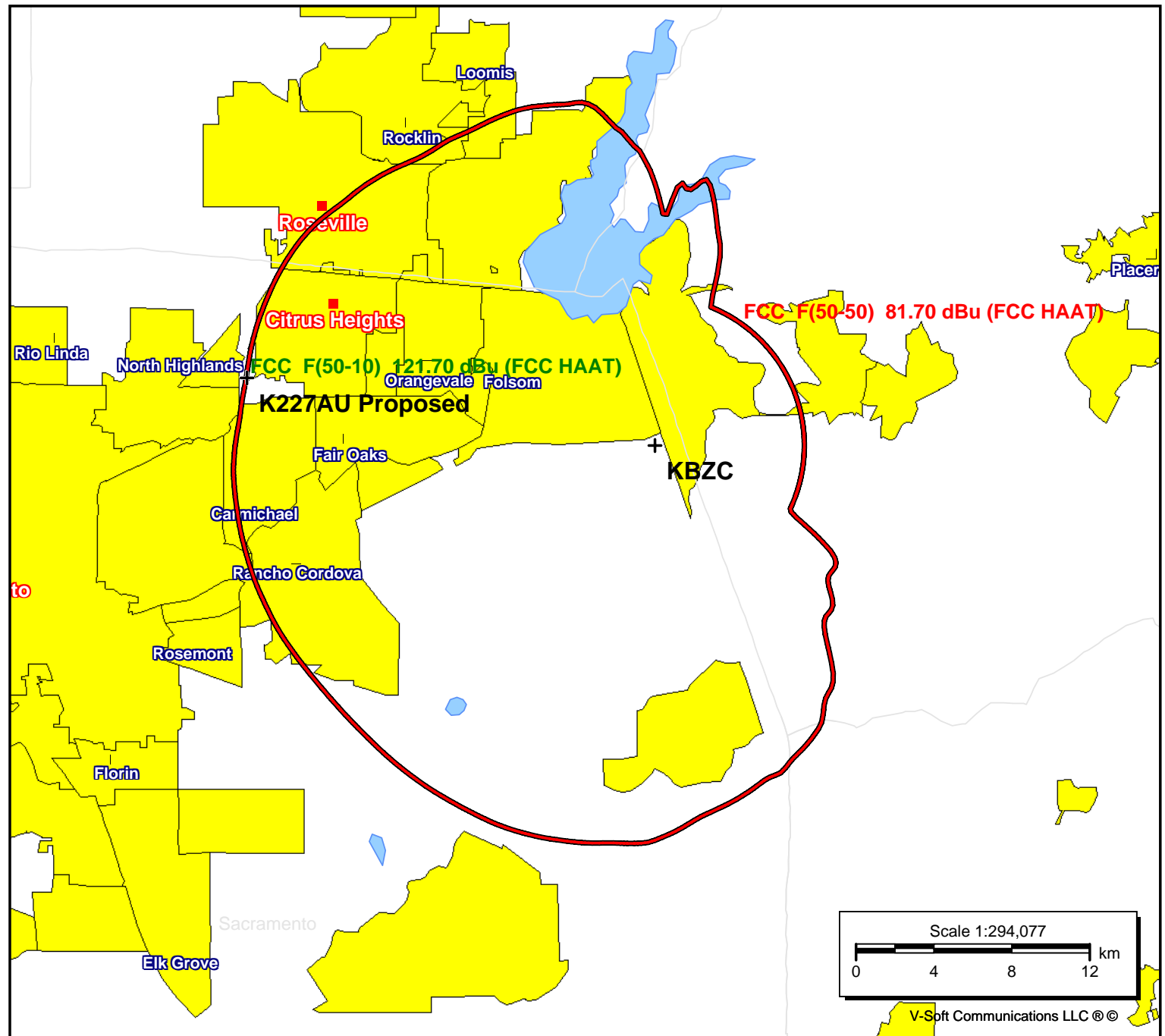
Therefore, EMF respectfully requests a waiver of C.F.R 74.1204 based on no population within the area of predicted interference.

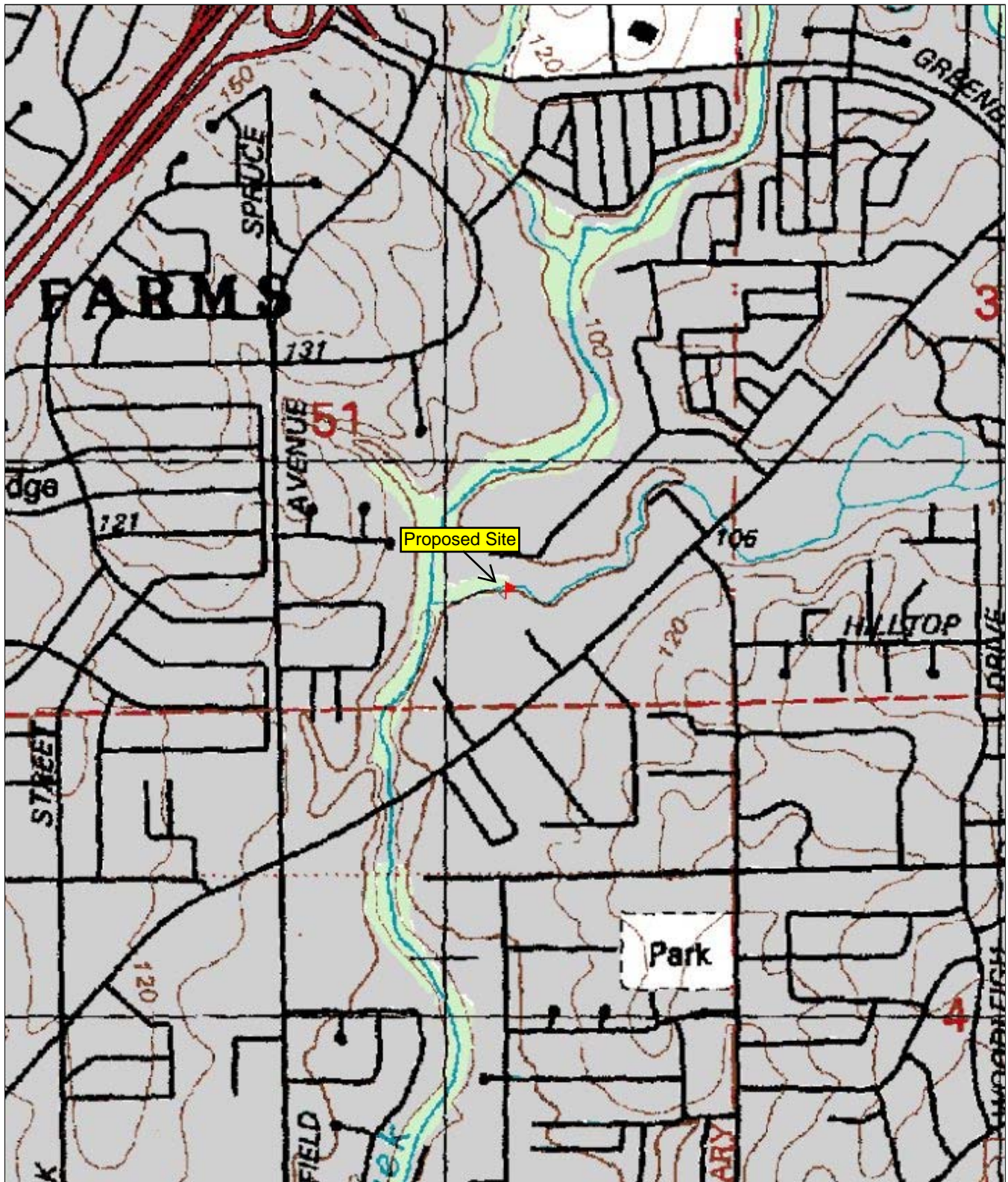
**K227AU Proposed**

Latitude: 38-40-21 N  
Longitude: 121-19-51 W  
ERP: 0.019 kW  
Channel: 296  
Frequency: 107.1 MHz  
AMSL Height: 113.0 m  
Horiz. Pattern: Omni  
Vert. Pattern: No  
Prop Model: None

**KBZC**

BLH19830216AD  
Latitude: 38-38-30 N  
Longitude: 121-05-25 W  
ERP: 50.00 kW  
Channel: 293  
Frequency: 106.5 MHz  
AMSL Height: 299.0 m  
Elevation: 238.0 m  
Horiz. Pattern: Omni  
Vert. Pattern: No  
Prop Model: None



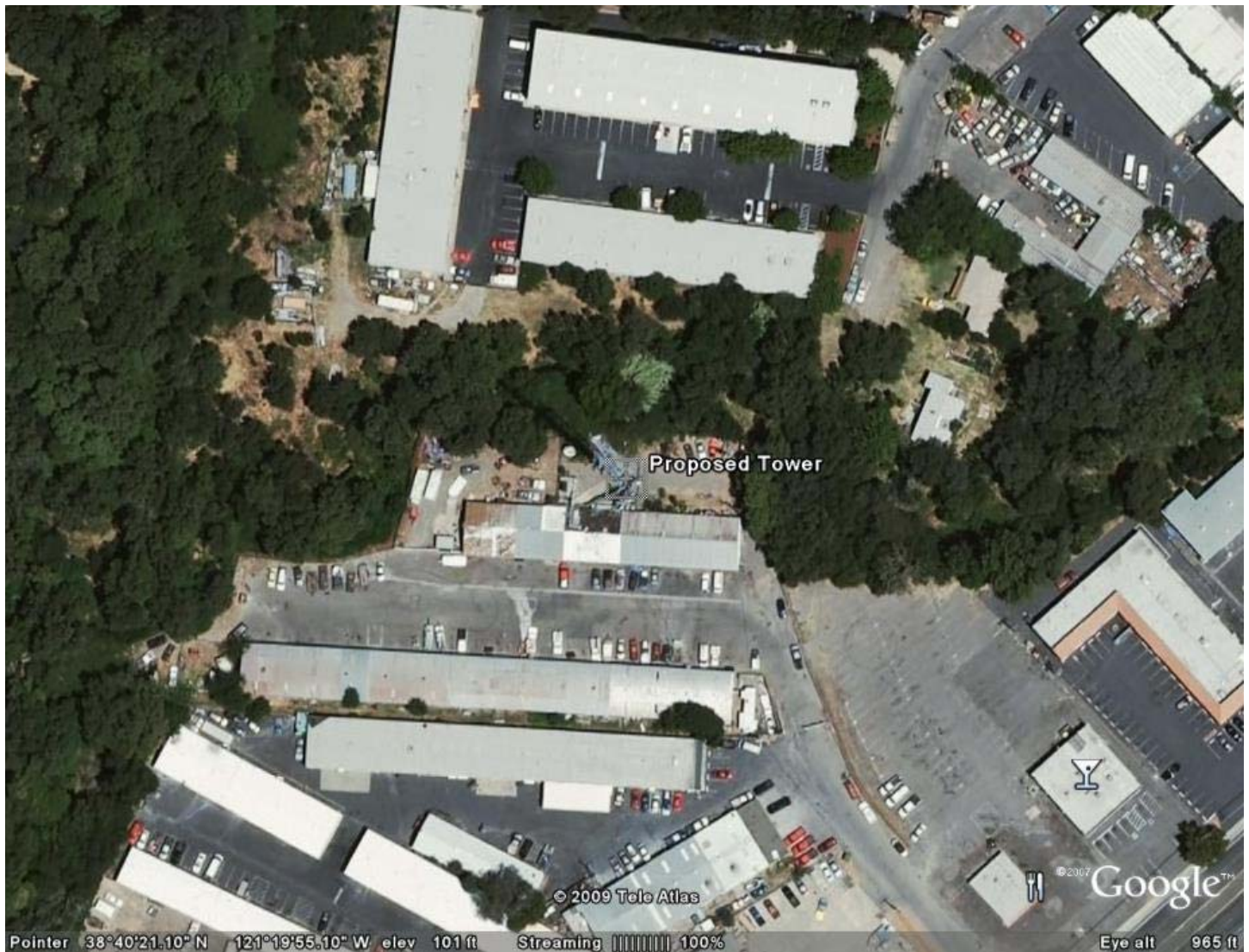


Tower ID: 1058155

Coordinates (NAD27): 38-40-21.45 N, 121-19-51.28 W

Coordinates (NAD83): 38-40-21.10 N, 121-19-55.10 W





Tower ID: 1058155

Coordinates (NAD27): 38-40-21.45 N, 121-19-51.28 W

Coordinates (NAD83): 38-40-21.10 N, 121-19-55.10 W

Status: Constructed

Structure Type: TOWER

Action Date: 08/19/2006

Construction Date: 09/10/2001

Location: 5831 Rosebud Lane (Rosebud #8627), Citrus Heights, CA

Height (AG): 108.50 m, Elevation: 30.80 m, Structure Height: 99.40 m

Circular Number: 70/7460-1K

FAA Number: 2005-AWP-5169-OE FAA Chapter: 4, 8, 12

Owner: American Tower, Inc.

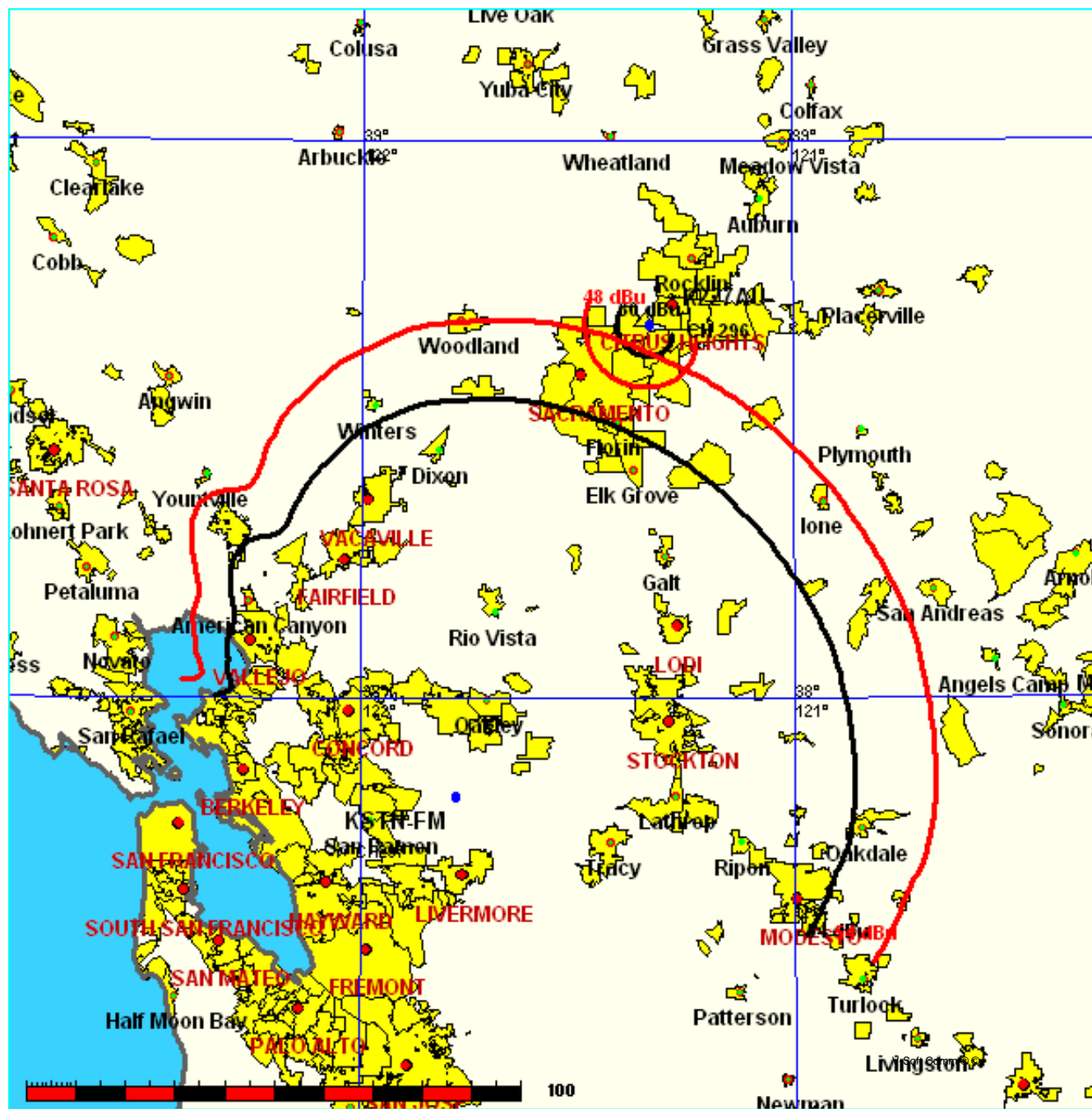
Address:

Regulatory Department  
4122 Factoria Blvd. S.E. Suite 405  
Bellevue, WA 98006

Phone: (425) 643-9624

K227AU CH 296 D  
0.019 kW 113 M COR  
Prot. = 60 dBu  
Intef. = 48 dBu

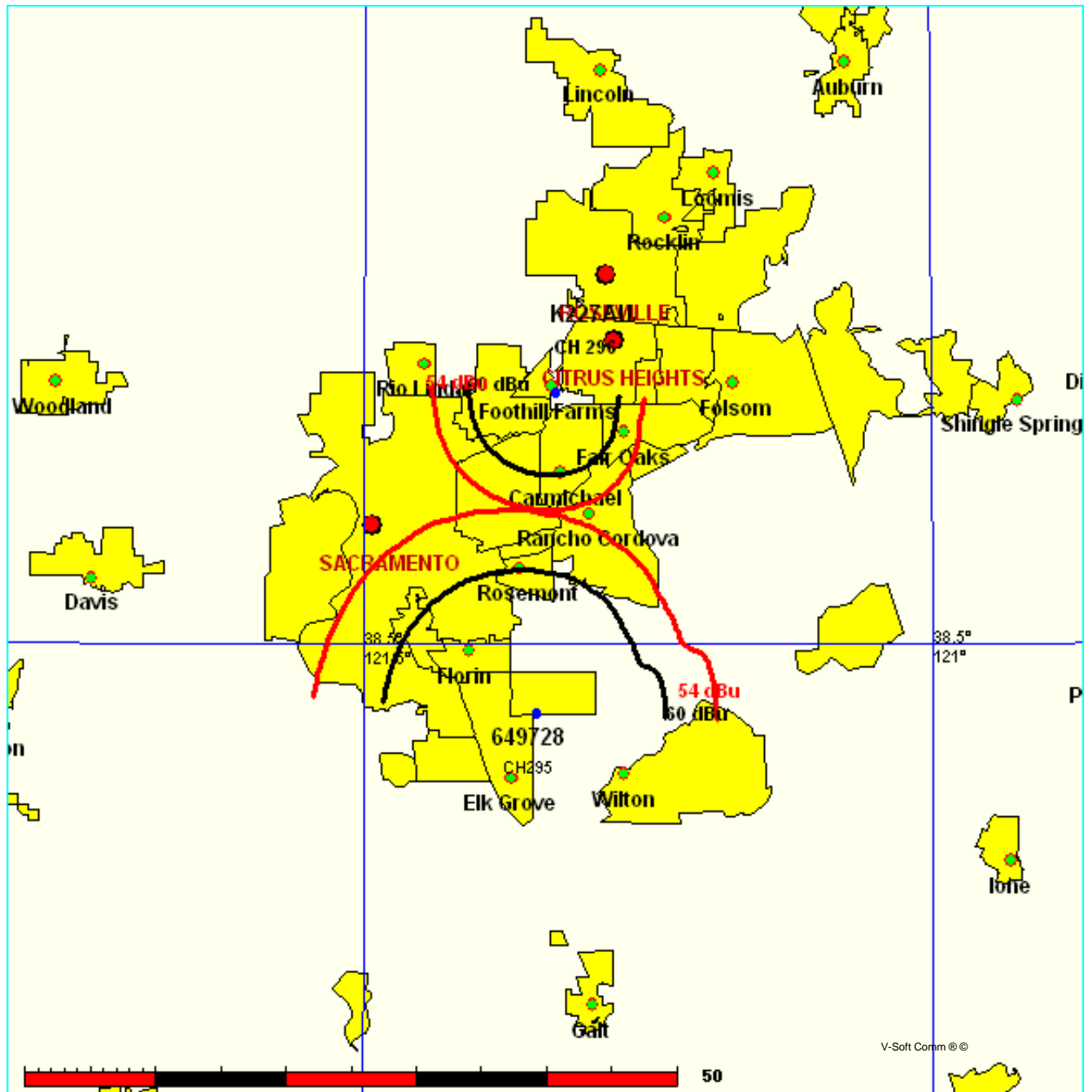
KSTN-FM CH 297 B BMLH20060721AAP  
8.1 kW, 713 M COR  
Prot. = 54 dBu  
Intef. = 54 dBu



FMCommander Single Allocation Study  
09-28-2009

K227AU CH 296 D  
0.019 kW 113 M COR  
Prot. = 60 dBu  
Intef. = 54 dBu

649728 CH 295 D BNPFT20030317MNK  
0.25 kW, 87 M COR  
Prot. = 60 dBu  
Intef. = 54 dBu



FMCommander Single Allocation Study  
09-28-2009

K227AU CH 296 D  
0.019 kW 113 M COR  
Prot. = 60 dBu  
Intef. = 54 dBu

641591 CH 295 D BNPFT20030317EOF  
0.023 kW, 96 M COR  
Prot. = 60 dBu  
Intef. = 54 dBu

