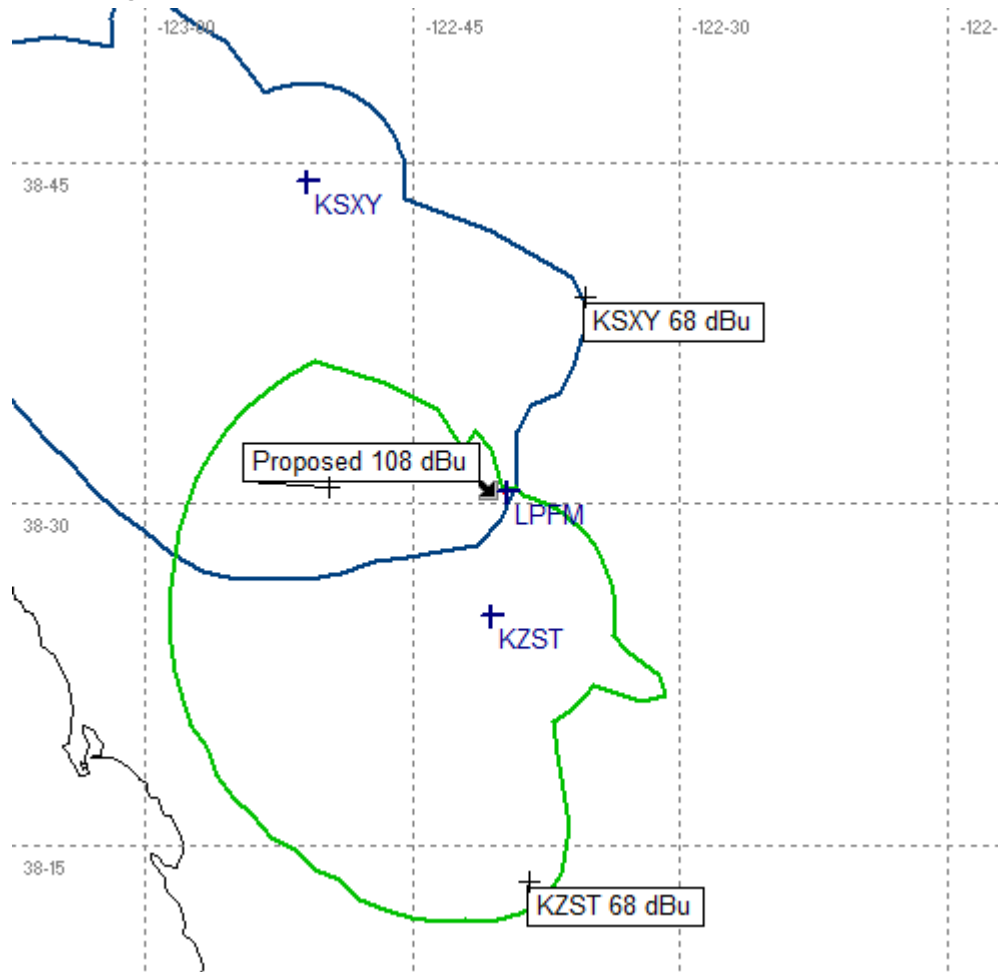


Santa Rosa, CA
100.5 MHz, Channel 263
Nov 14, 2013

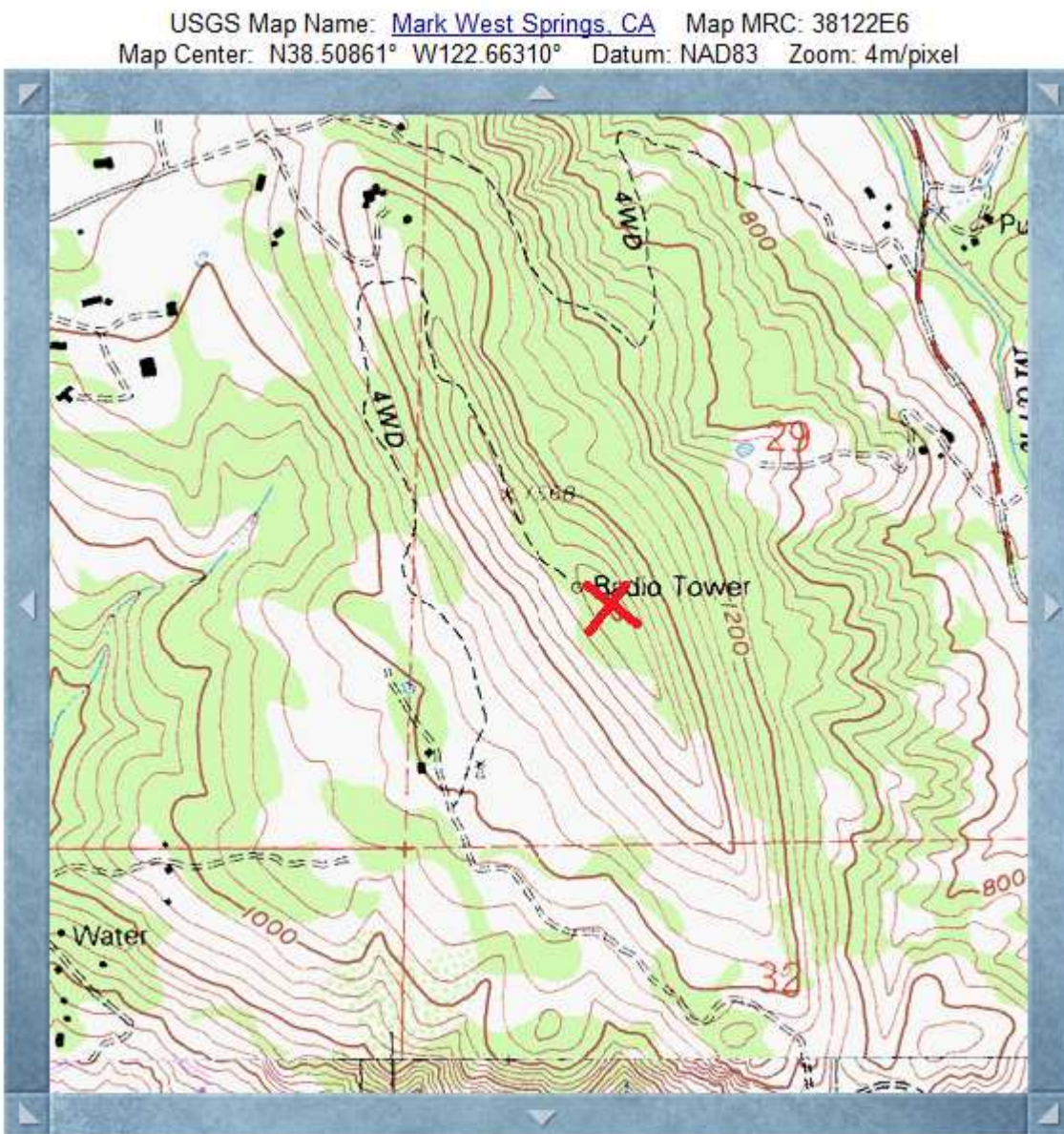
The applicant wishes to locate an LPFM on Channel 263 (100.5 MHz) at 7 meters AGL at an existing communication site on a pole at the following coordinates: 38-30-31-N, 122-39-43-W. According to the FCC's LPFM finder tool, channel 263 provisionally works for LPFM provided that it does not cause any interference to the 2nd adjacent stations KSNY and KZST.

The 108 dBu interfering contour is completely contained within the 68 dBu contours of KSNY and KZST. At an ERP of 2 watts at a HAAT of 266 meters, the interfering contour extends 40 meters from the antenna. Nevertheless, the proposed site is on top of an uninhabited mountaintop called Mt. Barham. There are not any homes, roads, or businesses within the interfering contour. Please see the topographic map below showing no homes, roads, or businesses near the tower.

Please see below the relationship of the 68 dBu contours for KSNY and KZST to the proposed 108 dBu interfering contour.



Please see below the topographic map representing the tower location atop Mt. Barham and not being next to population:



Due to lack of interference within the interfering contour, this proposal should be acceptable. The applicant requests a waiver to be able to operate on the 2nd adjacent channel to KSNV and KZST

Prepared by:

Keith Leitch
Engineer
707-479-9428