

FM DIRECTIONAL BROADCAST ANTENNA

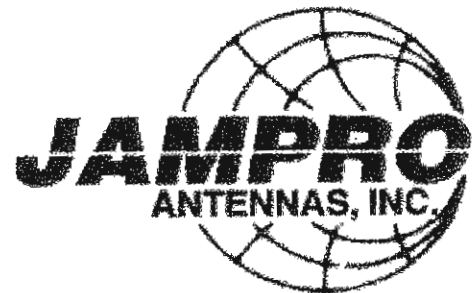
PROOF-OF-PERFORMANCE

MODEL JMPC-3 DA

SERIAL NUMBER 14811

KNHM

Bayside, CA



6340 Sky Creek Drive • Sacramento, California USA 95828
(916) 383-1177 phone • (916) 383-1182 fax



6340 Sky Creek Drive, Sacramento, California 95828
P.O. Box 292880, Sacramento, California 95829-2880

(916) 383-1177 FAX (916) 383-1182

TABLE OF CONTENTS

A.	Engineer's Statement	1,2
B.	Mechanical Drawings	3,4
C.	Composite Azimuth Pattern, Plot	5
D.	Composite Azimuth Pattern, Tabulation	6
E.	Azimuth Pattern, Horizontal & Vertical Polarizations, Plot	7
F.	Azimuth Pattern, Horizontal & Vertical Polarizations, Tabulation	8
G.	Elevation Plane Pattern, Plot	9
H.	Elevation Plane Pattern, Tabulation	10



6340 Sky Creek Drive, Sacramento, California 95828
P.O. Box 292880, Sacramento, California 95829-2880

(916) 383-1177 FAX (916) 383-1182

DATE: December 30, 2008

ANTENNA GAIN	H-pol	V-pol
relative	2.89	2.89
(dBd)	(4.62)	(4.62)

FM ANTENNA FOR:

STATION: KNHM

LOCATION: Bayside, CA

MODEL NUMBER: JMPG-3 DA

FREQUENCY & ERP: 91.5 MHz, 0.50 kW

ANTENNA INPUT POWER: 0.173 kW

ANTENNA BOOM HEADING: 220° T

RMS OF THE
AZIMUTH PATTERNS:

Composite	H-pol	V-pol
0.794	0.710	0.730

CERTIFICATION

This certification, along with the accompanying antenna specification sheet, antenna mounting sketches, and azimuth and elevation patterns, certifies the construction and measurement of the JAMPRO FM CP antenna to the station's requirements, as measured at the JAMPRO antenna site in Sacramento, California. The following is an outline of construction methods, pattern measurements, installation requirements, recommended maintenance and equipment used.

CONSTRUCTION

A standard CP FM antenna model was used and parasitic reflectors were added to create the required directional patterns. From experience and by repeated measurements, these elements were adjusted as to position until the final configuration was determined and the pattern requirements were met. These additional elements are steel, hot dipped galvanized and either bolted or welded in place. Measurements to establish their exact location are shown on the antenna mounting sketches.

MEASUREMENT

The full scale antenna was mounted on an exact duplicate of its final support at the station. We were careful to duplicate conduits, cables and anything peculiar to this mounting. This was then placed on a turntable at the JAMPRO antenna range. This directional antenna was used for receiving the radiation from a transmitting antenna that is elevated 25 feet above ground and located at a distance of 4,500 feet. This transmitting antenna is capable of transmitting either horizontal or vertical polarization. The frequency of the signal generator was accurately set to station frequency by use of a frequency counter. A spectrum analyzer was used to continuously measure field strength as the antenna under test was rotated. Field strength at each azimuth was then plotted.



6340 Sky Creek Drive, Sacramento, California 95828
P.O. Box 292880, Sacramento, California 95829-2880

(916) 383-1177 FAX (916) 383-1182

Station: **KNHM**

Model: **JMPC-3 DA**

INSTALLATION

The antenna must be installed in exactly the manner in which it was measured at the factory. This is shown in detail on the antenna mounting sketch, including the azimuth bearing of the elements. This boom must be verified by a surveyor at the site when installation is being completed. Good engineering practices should be followed in any details not covered by specific instructions.

MAINTENANCE

Annual or regular inspection should be made on the antenna system. At this time, tightness of U-bolts, or other fastenings, should be routinely checked. Any deterioration of the antenna due to lightning, or other causes should be promptly repaired.

EQUIPMENT

MODEL: -3000 Wavetek Signal Generator, Serial #66479
-1580 Scientific Atlanta pattern Recorder, Serial # 471, Cal'd 11/01/07
-8591E H.P. Spectrum Analyzer, Serial #3308A01312, Cal'd 12/18/07
-TUNED CAVITY DIPOLE

CONCLUSION

In the development of this pattern, JAMPRO antennas, Inc. observed known requirements of the FCC, as stated on the station construction permit.

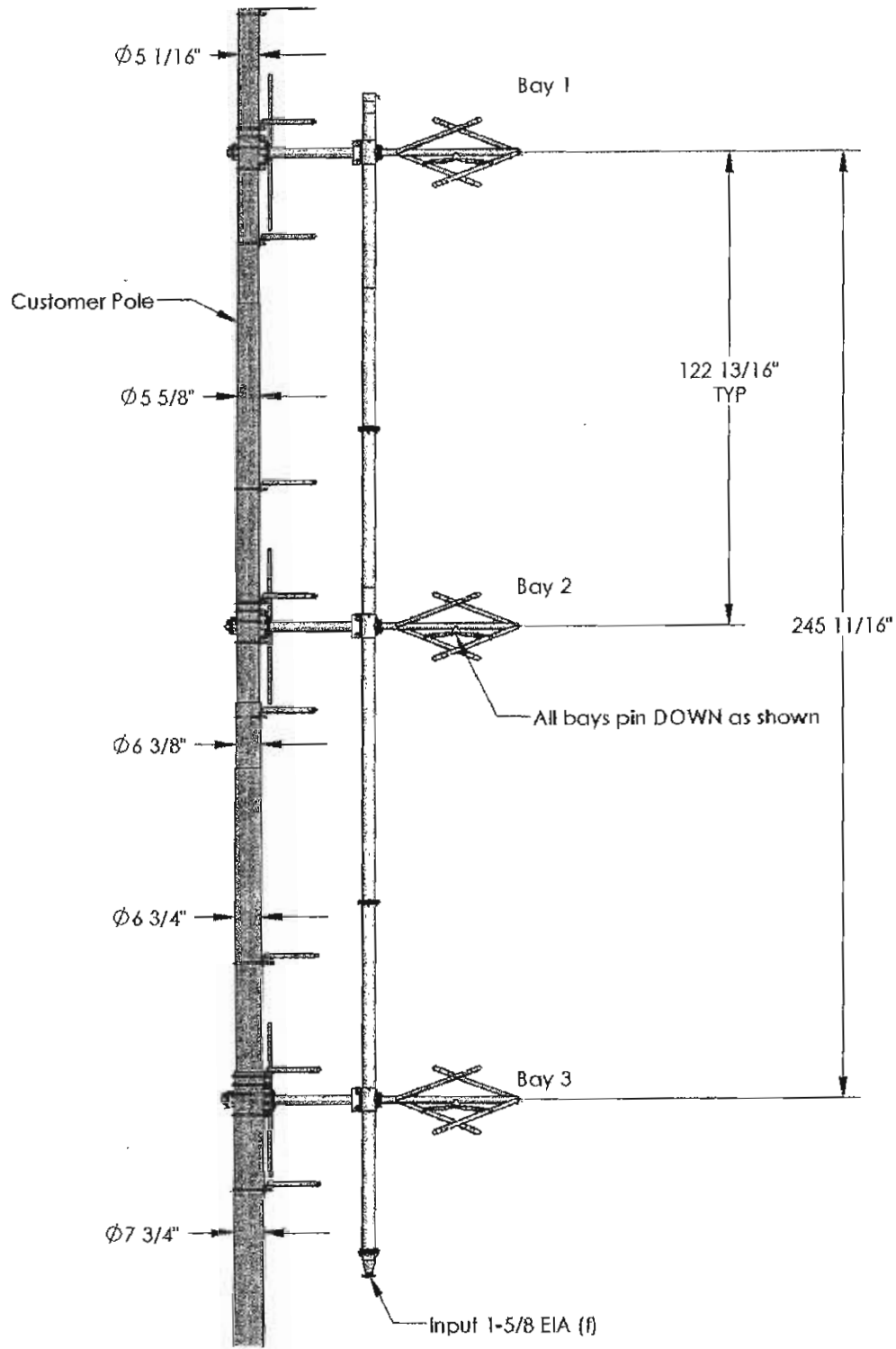
Gain figures and required input power to achieve station ERP, as well as other details, are found on the first page.

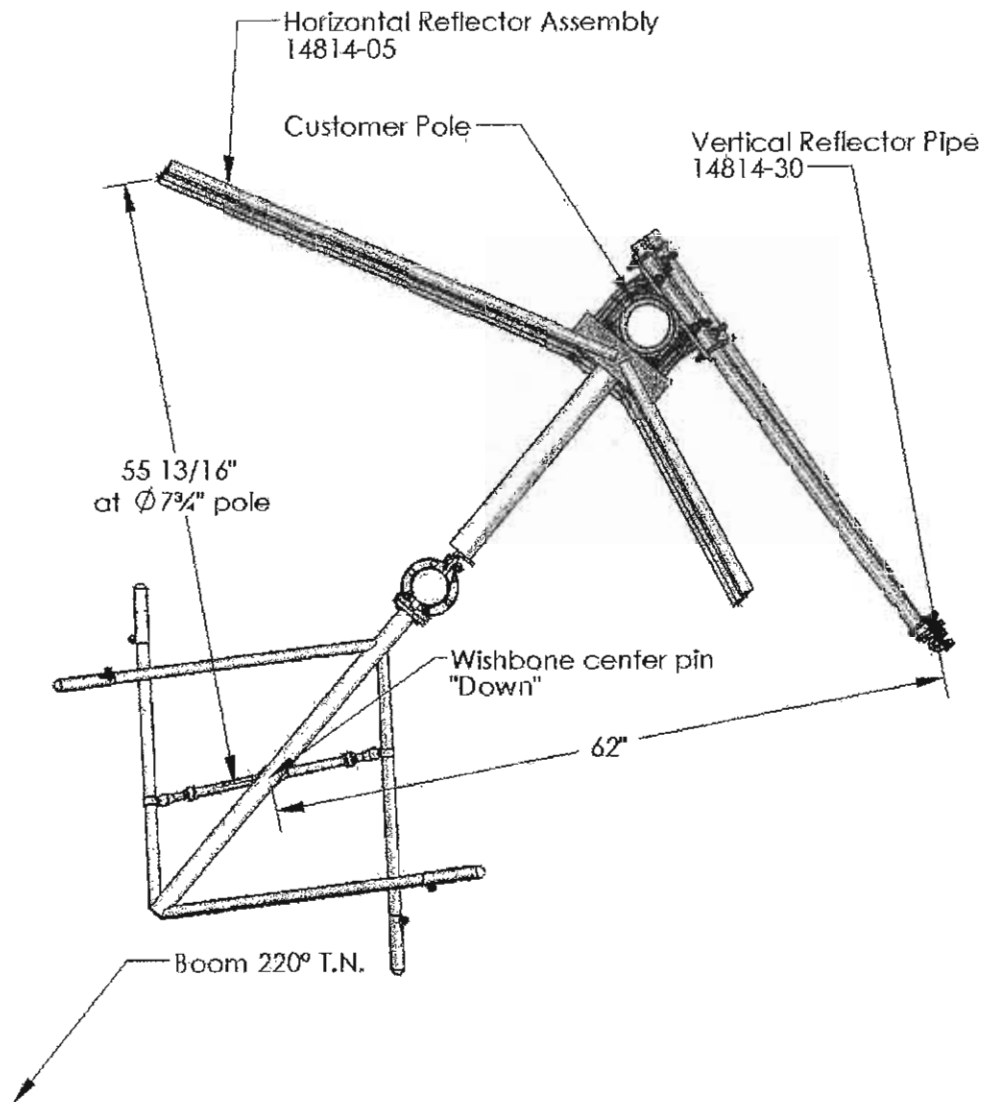
This certification, with its calculations were performed by J. Dane Jubera, B.S.E.E., Electrical Engineer, JAMPRO Antennas, Inc.

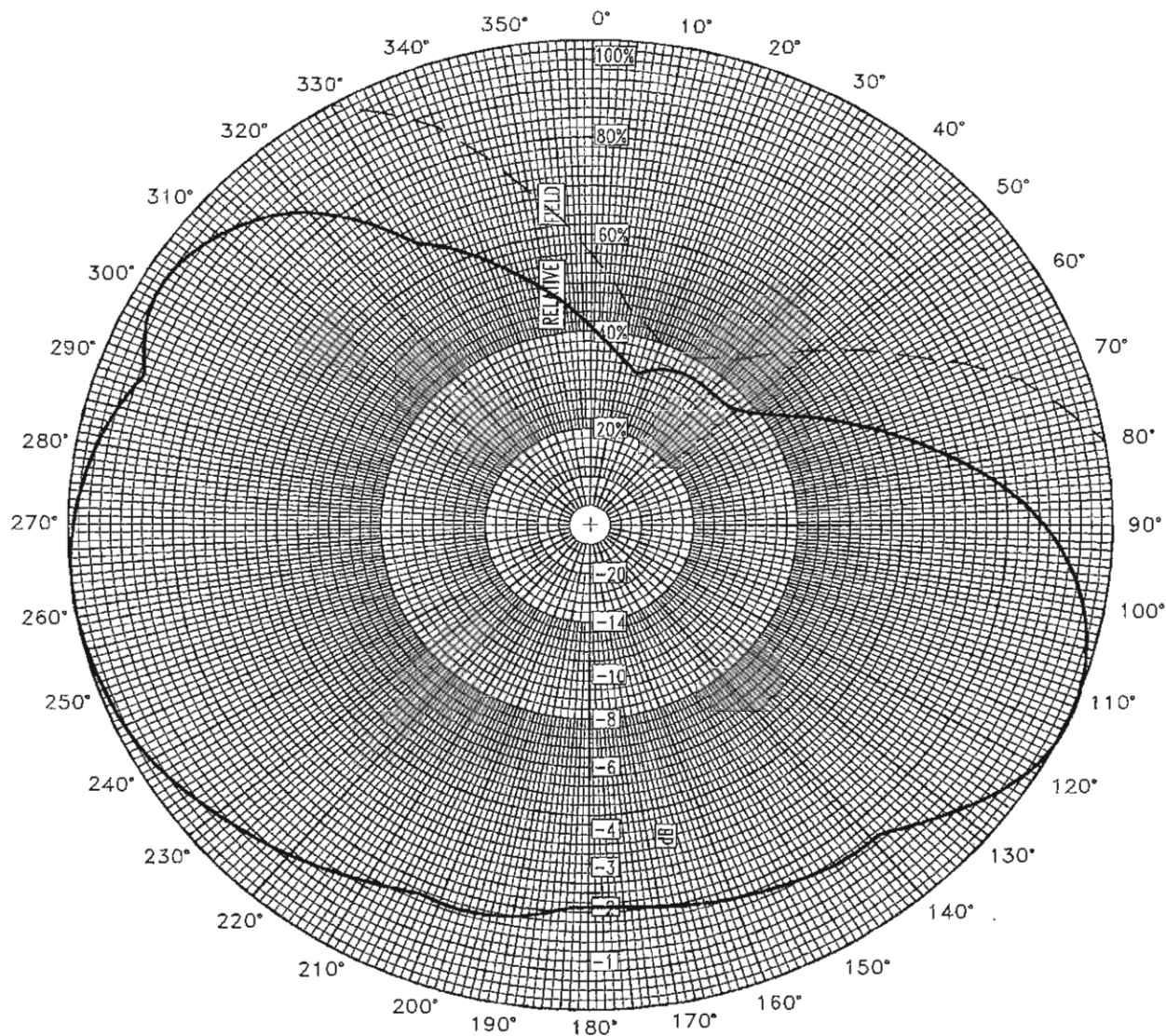
EXECUTED THIS 30 DAY OF December, 2008

BY:

J. Dane Jubera, B.S.E.E. JAMPRO Antennas, Inc.







Azimuth Pattern

Customer: KNHM

Date: December 4, 2008

Frequency: 91.5 MHz

Type Number: JMPC-3 DA

Notes:

COMPOSITE PATTERN ENVELOPE (H & V)



(916) 383-1177 Fax: (916) 383-1182

6340 Sky Creek Drive, Sacramento, CA 95828
P.O. Box 292880, Sacramento, CA 95829-2880



6340 Sky Creek Drive, Sacramento, California 95828
P.O. Box 292880, Sacramento, California 95829-2880

(916) 383-1177 FAX (916) 383-1182

KNHM

ERP = 0.50 kW

December 4, 2008

JMPC-3 DA

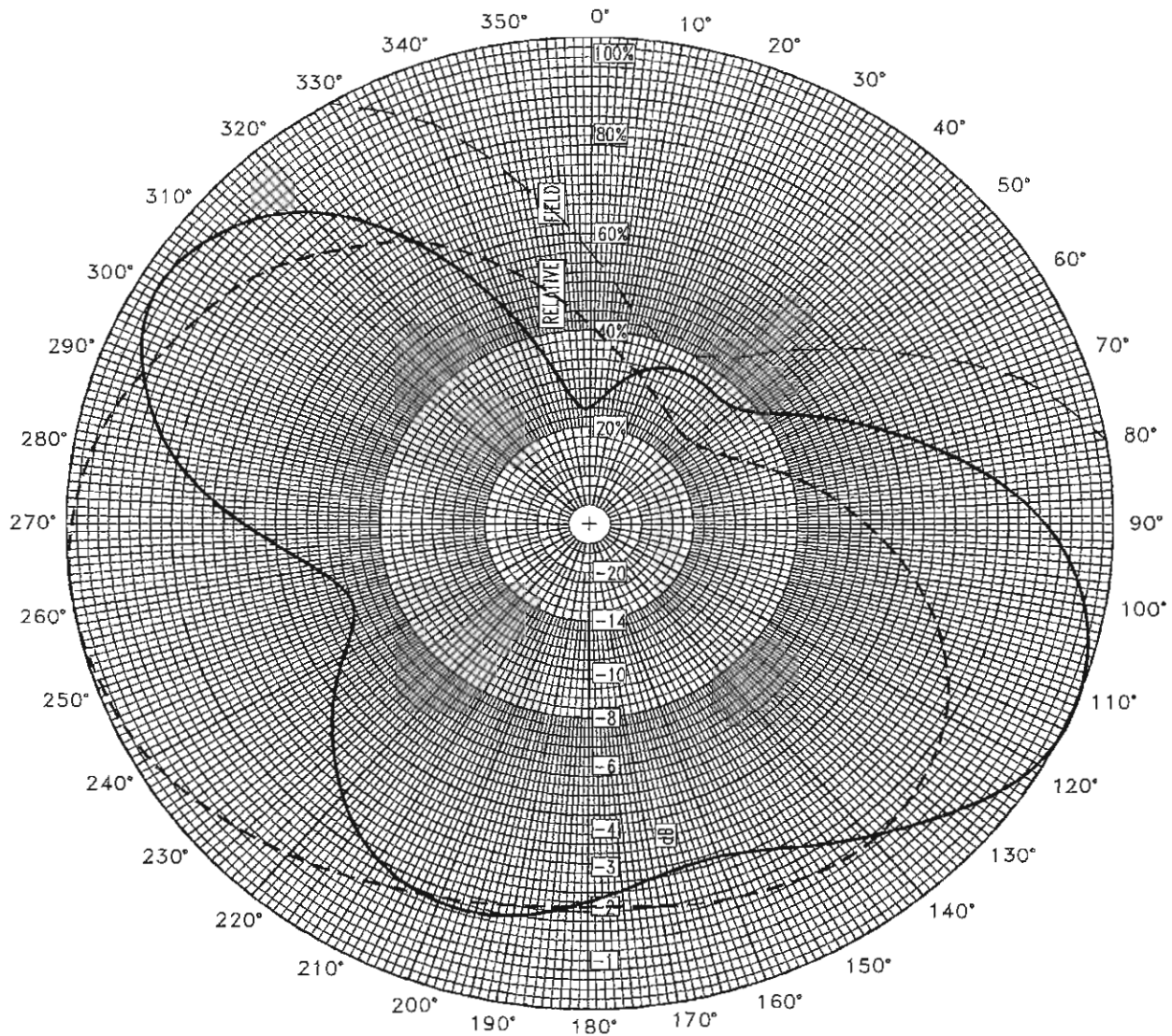
TABULATION OF RELATIVE FIELD

COMPOSITE MEASURED PATTERN (H & V)

BEARING	FIELD	ERP (kW)	dBk
0	0.410	0.08	-10.75
10	0.350	0.06	-12.13
20	0.340	0.06	-12.38
30	0.360	0.06	-11.88
40	0.360	0.06	-11.88
50	0.370	0.07	-11.65
60	0.450	0.10	-9.95
70	0.580	0.17	-7.74
80	0.730	0.27	-5.74
90	0.870	0.38	-4.22
100	0.960	0.46	-3.36
110	1.000	0.50	-3.01
120	0.990	0.49	-3.10
130	0.920	0.42	-3.73
140	0.850	0.36	-4.42
150	0.840	0.35	-4.52
160	0.820	0.34	-4.73
170	0.800	0.32	-4.95
180	0.790	0.31	-5.06
190	0.820	0.34	-4.73
200	0.830	0.34	-4.63
210	0.850	0.36	-4.42
220	0.890	0.40	-4.02
230	0.930	0.43	-3.64
240	0.970	0.47	-3.27
250	0.990	0.49	-3.10
260	1.000	0.50	-3.01
270	0.990	0.49	-3.10
280	0.960	0.46	-3.36
290	0.910	0.41	-3.83
300	0.960	0.46	-3.36
310	0.930	0.43	-3.64
320	0.840	0.35	-4.52
330	0.670	0.22	-6.49
340	0.580	0.17	-7.74
350	0.490	0.12	-9.21

Relative fields at other azimuths:

45	0.360	225	0.910
135	0.879	315	0.894



Azimuth Pattern

Customer: KNHM

Date: December 4, 2008

Frequency: 91.5 MHz

Type Number: JMPC-3 DA

Notes:

MEASURED PATTERN IN FULL SCALE

HPOL VPOL --- LIMITS



(916) 383-1177 Fax: (916) 383-1182
6340 Sky Creek Drive, Sacramento, CA 95828
P.O. Box 292880, Sacramento, CA 95829-2880



8340 Sky Creek Drive, Sacramento, California 95828
P.O. Box 282880, Sacramento, California 95828-2880

(916) 383-1177 FAX (916) 383-1182

KNHM

ERP = 0.50 kW

December 4, 2008

JMPC-3 DA

TABULATION OF MEASURED FIELDS

BEARING	HORIZONTAL POLARIZATION		VERTICAL POLARIZATION	
	FIELD	ERP(kW)	FIELD	ERP(kW)
0	0.240	0.03	0.410	0.08
10	0.290	0.04	0.350	0.08
20	0.340	0.06	0.310	0.05
30	0.360	0.06	0.280	0.04
40	0.360	0.06	0.260	0.03
50	0.370	0.07	0.260	0.03
60	0.450	0.10	0.290	0.04
70	0.580	0.17	0.350	0.06
80	0.730	0.27	0.440	0.10
90	0.870	0.38	0.530	0.14
100	0.960	0.46	0.630	0.20
110	1.000	0.50	0.720	0.26
120	0.990	0.49	0.790	0.31
130	0.920	0.42	0.830	0.34
140	0.840	0.35	0.850	0.36
150	0.770	0.30	0.840	0.35
160	0.730	0.27	0.820	0.34
170	0.740	0.27	0.800	0.32
180	0.780	0.30	0.790	0.31
190	0.620	0.34	0.800	0.32
200	0.830	0.34	0.820	0.34
210	0.800	0.32	0.850	0.36
220	0.730	0.27	0.890	0.40
230	0.640	0.20	0.930	0.43
240	0.540	0.15	0.970	0.47
250	0.480	0.12	0.990	0.49
260	0.530	0.14	1.000	0.50
270	0.660	0.22	0.990	0.49
280	0.810	0.33	0.960	0.46
290	0.910	0.41	0.910	0.41
300	0.960	0.46	0.860	0.37
310	0.930	0.43	0.810	0.33
320	0.840	0.35	0.740	0.27
330	0.670	0.22	0.670	0.22
340	0.470	0.11	0.580	0.17
350	0.290	0.04	0.490	0.12

MAXIMUM FIELDS:

115 1.000 0.50

265 1 0.50

MINIMUM FIELDS:

0 0.240 0.03

45 0.255 0.03

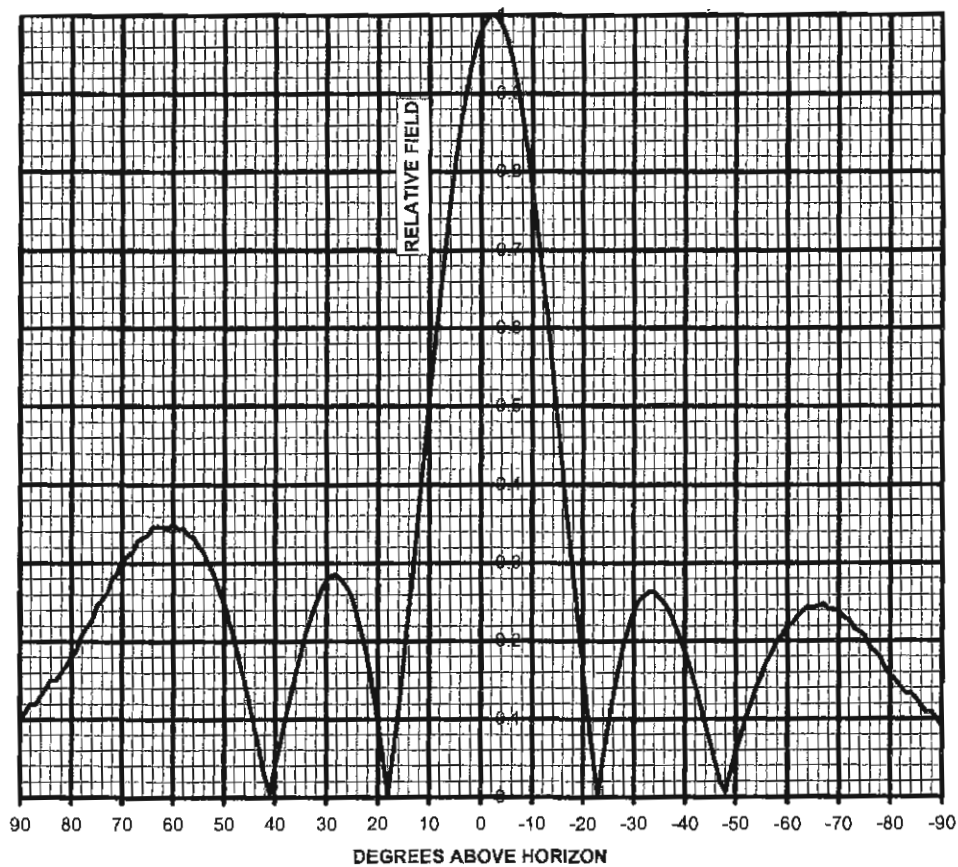


6340 Sky Creek Drive, Sacramento, California 95829
P.O. Box 292880, Sacramento, California 95829-2800

(916) 383-1177 FAX (916) 383-1182

PLOT OF ELEVATION PLANE PATTERN

STATION: KNHM 91.5 MHz JMPC-3 DA 1.00 lambda spacing





6340 Sky Creek Drive, Sacramento, California 95826
P.O. Box 282880, Sacramento, California 95829-2880

(916) 383-1177 FAX (916) 383-1182

TABULATION OF ELEVATION PLANE PATTERN

STATION: KNHM 91.5 MHz JMPC-3 DA 1.00 lambda spacing

<u>ELEVATION</u> <u>ANGLE</u>	<u>RELATIVE</u> <u>FIELD</u>	<u>ELEVATION</u> <u>ANGLE</u>	<u>RELATIVE</u> <u>FIELD</u>	<u>ELEVATION</u> <u>ANGLE</u>	<u>RELATIVE</u> <u>FIELD</u>
10	0.509	-25	0.092	-60	0.219
9	0.575	-26	0.131	-61	0.224
8	0.639	-27	0.164	-62	0.232
7	0.700	-28	0.195	-63	0.239
6	0.757	-29	0.219	-64	0.244
5	0.810	-30	0.238	-65	0.242
4	0.857	-31	0.252	-66	0.245
3	0.898	-32	0.258	-67	0.247
2	0.933	-33	0.263	-68	0.241
1	0.961	-34	0.263	-69	0.241
0	0.981	-35	0.256	-70	0.240
-1	0.995	-36	0.249	-71	0.230
-2	1.000	-37	0.238	-72	0.227
-3	0.997	-38	0.222	-73	0.216
-4	0.987	-39	0.205	-74	0.212
-5	0.970	-40	0.187	-75	0.207
-6	0.945	-41	0.166	-76	0.193
-7	0.913	-42	0.144	-77	0.187
-8	0.874	-43	0.118	-78	0.180
-9	0.830	-44	0.094	-79	0.165
-10	0.781	-45	0.069	-80	0.157
-11	0.727	-46	0.044	-81	0.150
-12	0.666	-47	0.018	-82	0.142
-13	0.609	-48	0.007	-83	0.134
-14	0.544	-49	0.032	-84	0.134
-15	0.478	-50	0.056	-85	0.126
-16	0.416	-51	0.079	-86	0.117
-17	0.350	-52	0.101	-87	0.109
-18	0.288	-53	0.121	-88	0.109
-19	0.224	-54	0.141	-89	0.100
-20	0.163	-55	0.157	-90	0.091
-21	0.105	-56	0.174		
-22	0.050	-57	0.186		
-23	0.001	-58	0.200		
-24	0.048	-59	0.208		