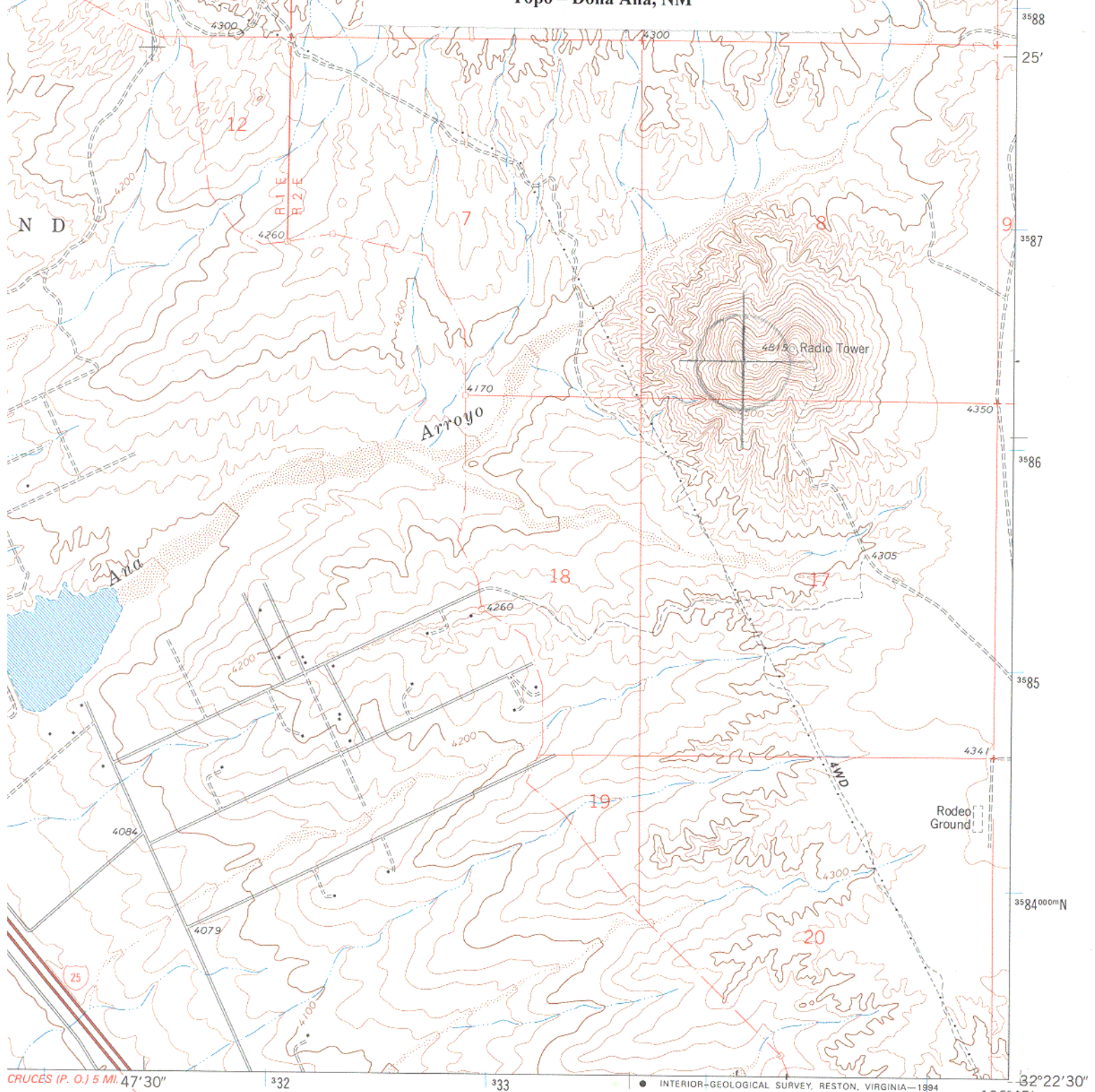


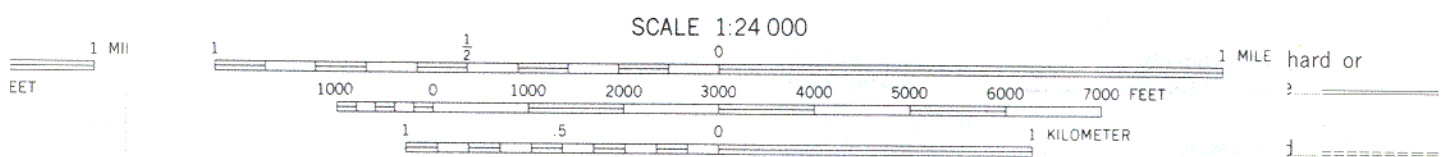
Topo – Dona Ana, NM



CRUCES (P. O.) 5 MI. 47' 30"

● INTERIOR-GEOLOGICAL SURVEY, RESTON, VIRGINIA-1994  
335000mE

32°22'30"  
106°45'



CONTOUR INTERVAL 20 FEET

SUPPLEMENTARY CONTOUR INTERVAL 10 FEET  
NATIONAL GEODETIC VERTICAL DATUM OF 1929

State Route

QUADRANGLE LOCATION

DOÑA ANA NM