

ENGINEERING TECHNICAL STATEMENT PREPARED BY WILLIAM T. GODFREY OF THE FIRM KESSLER AND GEHMAN ASSOCIATES, INC., TELECOMMUNICATIONS CONSULTING ENGINEERS IN CONNECTION WITH AN AMENDMENT TO THE CITRUS COUNTY ASSOCIATION FOR RETARDED CHILDREN'S (CCARC) DISPLACEMENT RELIEF APPLICATION ON FILE WITH THE FCC (BMPTTA-20020618AAR) FOR AUTHORITY TO MAKE CHANGES IN A CLASS A TELEVISION BROADCAST STATION (FCC FROM 301-CA).

The firm Kessler and Gehman Associates, Inc., has been retained by the Citrus County Association for Retarded Citizens (CCARC), Inc., Inverness, Florida in order to prepare engineering studies and the engineering portion of an amendment to the WYKE-CA displacement relief application on file with the FCC (BMPTTA - 20020618AAR) for authority to make changes in a Class A television broadcast station (FCC Form 301-CA). The WYKE-CA displacement application currently on file with the FCC was accepted for filing two days after the FCC accepted the WFTT-DT minor modification application for filing. The WFTT-DT minor modification parameters were not in the FCC database at the time the WYKE-CA displacement application was being prepared due to the fact that the FCC had just received the WFTT-DT application.

When the FCC placed the WFTT-DT minor modification application on Public Notice in the Daily Digest, we realized that the WFTT-DT application was received prior to the WYKE application, and therefore, the WFTT-DT application had precedence. When we initially performed the Longley-Rice interference studies, we determined that the proposed WYKE-CA Channel 47 facility would cause less than 0.5% interference to the WFTT-DT CP. However, when we noticed that WFTT proposed an increase in ERP from 200 kW non-directional to 1,000 kW directional, we were concerned and ran new studies. The new studies verified that the proposed WYKE-CA Channel 47 facility would cause a predicted 0.7% interference to the WFTT-DT minor modification application. Obviously, 0.7% interference is 0.2% above the authorized rounding tolerance. The CCARC decided to pursue an acceptance letter from WFTT but after weeks of delays without giving any idea of whether they would consider an acceptance letter, the CCARC decided it was time to move on and file an amendment application. Therefore, based on the fact that the WFTT-DT minor modification application was received by the FCC prior to the WYKE-CA displacement application and based on the fact that the WYKE-CA displacement application currently on file with the FCC would cause 0.2% interference above the allowable rounding tolerance percentage to the WFTT-DT minor modification application, the CCARC is filing this amendment to the WYKE-CA Channel 47+ application currently on file with the FCC in order to have a clean and file-acceptable application.

The CCARC is licensed to operate WYKE-LP on UHF, analog Channel 49 (no offset) with an ERP of 19.5 kW (horizontal) at an antenna height radiation center of 87.0 meters above average terrain in the vicinity of Crystal River, FL. The CCARC also has a construction permit ("CP") to build WYKE-LP on UHF, analog Channel 48 (zero offset) with an ERP of 20.2kW (horizontal) at an antenna height R/C of 87.0 meters AAT in the vicinity of Crystal River, FL. Please be advised that the CCARC does not plan to build the Channel 48 CP due to the fact that it will also be displaced by a DTV station. Therefore, the CH 48 CP should be dropped.

The CCARC submitted a Channel 26+ displacement relief application simultaneously with a Class A application on January 16, 2001. Since then, WYKE has been granted Class A status and the Channel 26+ displacement application has been granted a construction permit. Unfortunately, it has been discovered that the azimuth pattern submitted in the CH 26+ displacement application was rotated

approximately 230° more than desired and **it has also been discovered that the Channel 26+ Class A station is predicted to receive 3% interference from the WVEN-TV Channel 26 (co-channel) Daytona Beach CP facility.** Therefore, not only would the WYKE-CA CH 26+ facility lose a significant service population due to the fact that the main beam would be oriented over the ocean at 248° rather than over the desired area of interest at 030°, they would also experience an additional 3% reduction to their service population from the interference predicted to be received from the WVEN co-channel facility. The main beam cannot simply be rotated to the desired orientation because it would result in unacceptable interference to the WVEN-TV facility.

Initially, we performed studies to prepare a Class A application for WYKE and we determined that the licensed WYKE-LP Channel 49 facility would be displaced when the WVEN-DT (formerly WNTD-DT) facility went digital. We also determined that the WYKE-LP Channel 48 Construction Permit would be displaced when WOPX-DT and WFXU-DT constructed their digital stations. We performed interference studies ranging from in-core channels 2 through 51 and determined that the best channel available at the licensed site location is analog channel 47+. The proposed CH 47+ facility would not have its site within the protected contour of a co-channel or first adjacent channel TV broadcast station but the ratio in dB of its field strength to that of the WTEV-TV CH 47- broadcast station at the protected contour fails to meet the requirements specified in §74.705 of the FCC Rules. Therefore, as depicted in §74.705 of the FCC Rules, we are requesting a waiver of the interference protection rules. Terrain shielding and Longley-Rice terrain dependent propagation prediction methods demonstrated that the proposed facility would not cause unacceptable interference to the WTEV-TV CH 47- broadcast station, or any other station for that matter (See Exhibit 13).

Exhibit 12 is a LPTV study which identifies all stations that the proposed WYKE-CA CH 47+ facility would be short-spaced with. As you can see, the study results established that the proposed WYKE-CA CH 47+ facility would be short-spaced with the WFTT-DT CP CH 47 and the WTEV-TV CH 47 facilities. Since it was determined that short-spacing did exist, we performed a Longley-Rice study using a Sun Microsystems SPARC 5 computer work station loaded with the FCC's TV Interference and Spacing Analysis software (See Exhibit 13).

Exhibit 13 depicts the detailed Longley-Rice interference studies. As you can see, the proposed WYKE-CA Channel 47+ does not cause more than 0.4% interference to any station. The Low Power TV Study indicated that short-spacings existed with WFTT-DT and WTEV-TV. Apparently, at some point in time WBHS changed call signs to WFTT and as a result, the Low Power TV Studies reflect the WFTT call sign and the Longley-Rice studies reflect the WBHS and WFTT call signs. This is not a problem though because the true parameters are used regardless of call sign. As you can see by viewing the Longley-Rice studies exhibit, the proposed WYKE-CA is predicted to cause no more than 0.4% interference to WBHS /WFTT. The FCC Rules state that Class A station interference cannot decrease population in the DTV service area by more than 0.5%, therefore, the proposed WYKE-CA Channel 47+ facility complies with the Class A protection to DTV Rules with respect to WBHS/WFTT.

The Low Power TV Study also indicated that the proposed WYKE-CA CH 47+ facility would be short-spaced with WTEV-TV. Again, referring to the Longley-Rice exhibits, you can see that proposed WYKE-CA CH 47+ facility is predicted to cause 0.0% interference to the licensed WTEV-TV facility. Therefore, in accordance with the FCC's alternate protection means using terrain shielding and Longley-Rice, the proposed WYKE-CA CH 47+ facility complies with the NTSC TV protection from Class A TV rules.

The FCC Form 301-CA Certification section requires the following: a) Exhibit 4 explanation of Analog TV broadcast station protection; b) Exhibit 5 explanation of Digital TV station and DTV Table of Allotments protection; c) Exhibit 6 explanation of Low Power TV, TV translator, Class A, and Digital Class A station protection; d) Exhibit 7 explanation of Land mobile station protection; and e) Exhibit 8 explanation of Environmental Protection Act. The Longley-Rice studies (Exhibit 13) address the aforementioned exhibits 4 through 6 and 8. This engineering technical statement along with Exhibit 14 addresses the aforementioned Exhibit 7 (Land Mobile Protection). This engineering technical statement addresses the aforementioned Exhibit 8 (Environmental Protection Act).

Exhibit 14 is dedicated for the “Land mobile station protection” as per 47 C.F.R. §73.6020. Refer to Exhibit 14 for the Land Mobile Control Transmitter Locations. As you can see, the closest transmitter location to the proposed WYKE-CA Channel 47+ is in Miami, FL, which is approximately 414.9 km away. Therefore, the proposed WYKE-CA Channel 47+ does not cause interference to any applicable Land Mobile stations.

Attached Figures

The following list is an index of enclosed figures produced by calculations and engineering studies of the proposed WYKE-CA Channel 47+.

- 1) Exhibit 1 – Engineering Specifications
- 2) Exhibit 2 – Antenna Data
- 3) Exhibit 3 – Support Structure View (Tower Drawing)
- 4) Exhibit 4 – Azimuth Pattern
- 5) Exhibit 5 – Azimuth Pattern Tabulation
- 6) Exhibit 6 – Elevation Pattern (-2 to 5 degrees)
- 7) Exhibit 7 – Elevation Pattern (-10 to 90 degrees)
- 8) Exhibit 8 – Elevation Pattern Tabulation
- 9) Exhibit 9 – ERP/dBk Pattern
- 10) Exhibit 10 – Site Plotted on TOPO Map
- 11) Exhibit 11 – FCC Service Contour Plotted for WYKE-CA CH 47+
- 12) Exhibit 12 – Low Power TV Studies
- 13) Exhibit 13– Longley-Rice Interference Studies (WYKE-CA Channel 47+ Interference Studies (Pertains to Exhibits 4 – 6 in FCC Form 301-CA / Exhibits 1 -3 in Form 301-CA are not applicable for engineering).
- 14) Exhibit 14 – Land mobile station protection

Environmental Impact

The proposed construction will have no significant environmental impact as defined in §1.1307 of the FCC Rules. The transmitter, transmission line and antenna system will produce an ERP of 50.0 kW. Assuming that the maximum lobe of radiation is oriented at the base of the tower for WYKE-CA, it will produce a power density six feet above the ground of 0.094mW/cm^2 . This is only 4.22% of the maximum permissible exposure (MPE) authorized by the American National Standards Institute (ANSI). Since the proposed operation of WYKE-CA Channel 47+ would not exceed 5.0% of the MPE limit for population/uncontrolled at any point on the ground, WYKE-CA would not be considered a “significant

contributor” to the RF exposure environment pursuant to OET Bulletin 65, Edition 97-01. Therefore, contributions of exposure from other sources were not accounted for in this analysis. It is safe to conclude that the emissions will be insignificant and well within the maximum allowable requirements. If other antennas are placed on the tower in the future, the applicant will cooperate with those users by reducing or completely terminating the power to the antenna when maintenance workers are in danger from the electromagnetic radiation emanating from the antenna. The tower will be enclosed within a fence with warning signs posted at the locked gate.

Certification

The applicant accepts full responsibility for the elimination of any objectionable interference including that caused by intermodulation to facilities in existence or authorized prior to the grant of this application.

This technical statement was prepared by William T. Godfrey, Telecommunications Consultant with Kessler and Gehman Associates, Inc. having offices in Gainesville, Florida and has been working in the field of radio and television broadcast consulting since 1998. He graduated from the University of North Florida with a Bachelor of Arts degree in Criminal Justice and a minor in Mathematics and received a Commission in the Aviation Branch of the United States Army in 1993. As a Professional in the field of Telecommunications and as a Captain in the United States Army, he states under penalty of perjury that the information contained in this report is true and correct to the best of his knowledge and belief.



KESSLER AND GEHMAN ASSOCIATES, INC.

A handwritten signature in blue ink, reading "William T. Godfrey", is written over a horizontal line. Below the line, the name "WILLIAM T. GODFREY" is printed in a bold, sans-serif font.

Telecommunications Consultant

August 5, 2002

**WYKE-CA
CITRUS COUNTY, FLORIDA**

ENGINEERING SPECIFICATIONS

A. Transmitter Site:

Geographic coordinates:

North Latitude	28° 52' 55"
West Longitude	82° 31' 30"

Transmitter Site Address: **1315 N. Van Nortwick Rd.
Lecanto, FL 34461**

B. Main Studio Location: **4.7 miles ESE of Crystal River**

C. Proposed Facility:

NTSC Channel	Number	47
	Frequency	668-674 MHz

D. Antenna Height:

Height of Site Above Mean Sea Level (AMSL).....	15.8 M
Overall Height of Structure Above Ground.....	93.3 M
(including all appurtenances)	
Overall Height of Structure Above Mean Sea Level.....	109.1 M
(including all appurtenances)	
Height of Site Above Average Terrain	1.0 M
Antenna Height Radiation Center (R/C) Above Ground	88.2 M
Antenna Height R/C Above Mean Sea Level	104.0 M
Average of All Non-Odd Radials.....	18.0 M
Antenna Height R/C Above Average Terrain	86.0 M

E. System Parameters – Circular Polarization:

Transmitter Power Required	2.22 kW
Maximum Power Input to Antenna	1.64 kW
Total System Loss	1.30 dB
Transmission Line Efficiency.....	74.1%
Maximum Antenna Gain in Beam Maximum	14.83 dB
Maximum Antenna Gain in Horizontal Plane.....	14.79 dB
Maximum Effective Radiated Power	16.99 dBk
In Beam Maximum	50.0 kW
Maximum Effective Radiated Power	16.95 dBk
In Horizontal Plane	49.5 kW

**WYKE-CA CHANNEL 47+
CITRUS COUNTY, FLORIDA**

**DATA FOR PROPOSED ANALOG
DIRECTIONAL TRANSMITTING ANTENNA**

- A. **Antenna:** Dielectric TFU-16DSB-M (C), Horizontally Polarized, Directional (Cardioid) Antenna.
- B. **Electrical Beam Tilt:** 0.25°
- C. **Mechanical Beam Tilt:** None.
- D.

<u>Maximum Power Gain</u>	<u>Horizontal Polarization</u>
Maximum:	30.4 (14.83 dB)
Horizontal:	30.1 (14.79 dB)
- E. **Length:** 25.5 feet (7.8 meters) not including appurtenances.
- F. **Average Power:** 2.22 kW
- G. **Transmission Line:** 3 1/8" 50-ohm Heliax.
- H. **Transmission Line Loss:** 0.433 dB/100-feet
- I. **Total Transmission Line:** 300 feet
- J. **Transmission Line Attenuation:** 1.30 dB

ELEVATION VIEW

PROPOSED
DIELECTRIC
TFU-16DSB-M(C)
DIRECTIONAL (CARDIOID)
ANTENNA

GUYED TOWER AND
ANTENNA: LIGHTED
AND PAINTED IN
ACCORDANCE WITH
FCC REQUIREMENTS

SITE ELEVATION: 15.8 M AMSL

R/C

88.2 m
289.4 ft

92.1 m
302.1 ft

93.3 m
306.1 ft

OVERALL HEIGHT AGL:	93.3 M
OVERALL HEIGHT AMSL:	109.1 M
RADIATION CENTER AGL:	88.2 M
RADIATION CENTER AMSL:	104.0 M
RADIATION CENTER AAT:	86.0 M
AVG OF NON-ODD RADIALS:	18.0 M
SITE HEIGHT AAT:	1.0 M

COORDINATES NAD 27:
N. LATITUDE 28 ° 52 ' 55 "
W. LONGITUDE 82 ° 31 ' 30 "

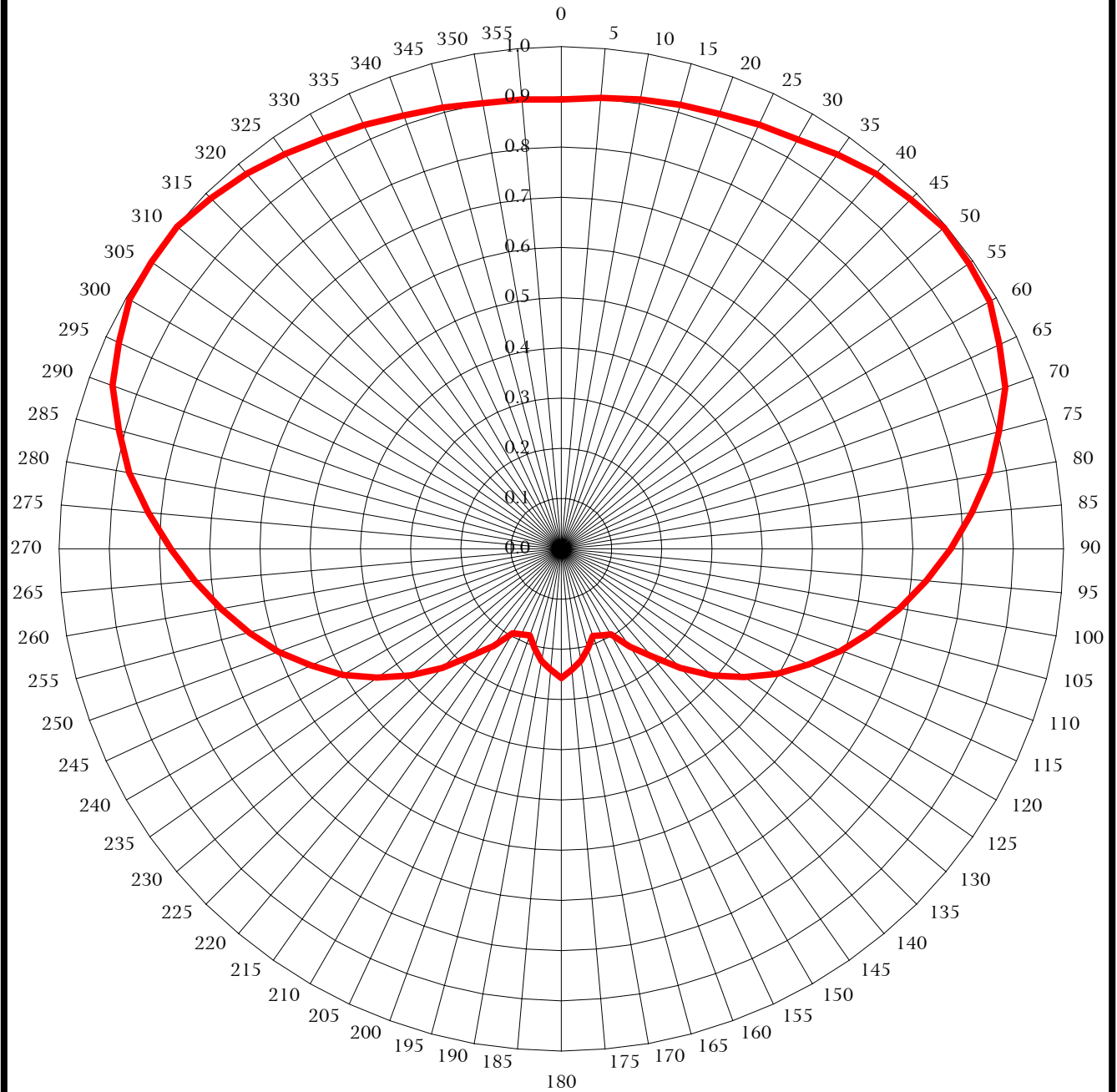
Antenna Structure Registration Number
1030485

NOTE: NOT TO SCALE

KESSLER & GEHMAN
TELECOMMUNICATIONS CONSULTING ENGINEERS
507 N.W. 60th Street, Suite C
Gainesville, Florida 32607

WYKE-CA CHANNEL 47+
CITRUS COUNTY, FLORIDA
20020802 EXHIBIT 3

AZIMUTH PATTERN (RELATIVE FIELD)



DIELECTRIC TFU-16-DSB-M (C)
030° ANTENNA ROTATION (NOT SHOWN)
RMS GAIN AT MAIN LOBE: 1.90 (2.793 dB)
FREQUENCY: 671 MHz

KESSLER & GEHMAN
TELECOMMUNICATIONS CONSULTING ENGINEERS
507 N.W. 60th Street, Suite C
Gainesville, Florida 32607

WYKE-CA CHANNEL 47+
CITRUS COUNTY, FLORIDA

20020802

EXHIBIT 4

WYKE-CA CHANNEL 47+
CITRUS COUNTY, FLORIDA

TABULATION OF RELATIVE FIELD FOR PROPOSED DIRECTIONAL ANTENNA

<u>AZIMUTH</u>	<u>RELATIVE FIELD</u>	<u>AZIMUTH</u>	<u>RELATIVE FIELD</u>
N000°E	0.895	N180°E	0.257
N010°E	0.908	N190°E	0.227
N020°E	0.921	N200°E	0.183
N030°E	0.942	N210°E	0.194
N040°E	0.974	N220°E	0.278
N050°E	0.995	N230°E	0.393
N060°E	0.985	N240°E	0.502
N070°E	0.940	N250°E	0.599
N080°E	0.865	N260°E	0.688
N090°E	0.775	N270°E	0.778
N100°E	0.684	N280°E	0.873
N110°E	0.593	N290°E	0.951
N120°E	0.497	N300°E	0.993
N130°E	0.392	N310°E	0.998
N140°E	0.280	N320°E	0.976
N150°E	0.197	N330°E	0.944
N160°E	0.184	N340°E	0.918
N170°E	0.226	N350°E	0.901

MAXIMUM OF 1.000 AT N305°E
MINIMUM OF 0.178 AT N205°E



WYKE-CA CHANNEL 47+
CITRUS COUNTY, FLORIDA

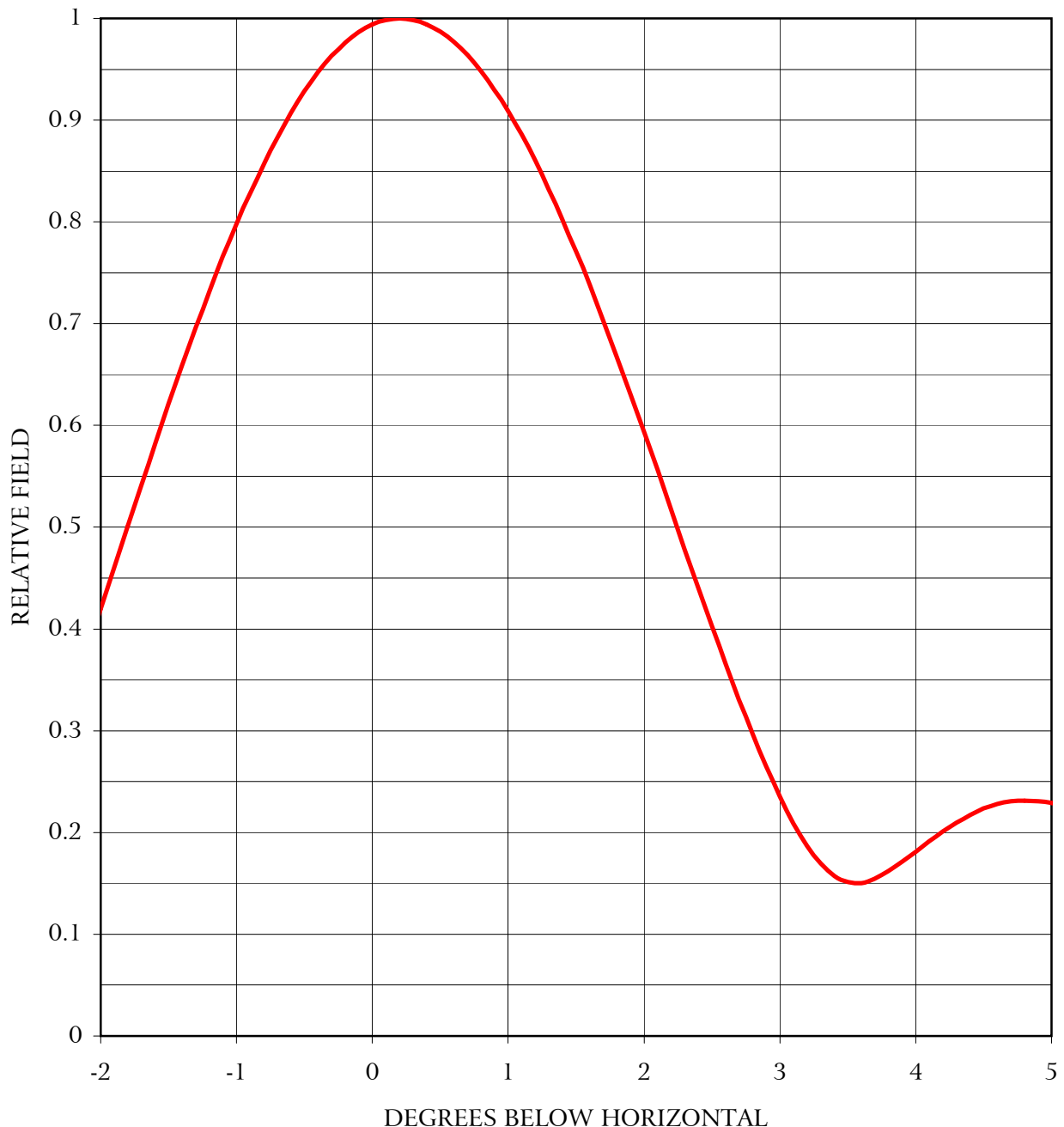
20020802

EXHIBIT 5

ELEVATION PATTERN

DATE: 02 AUG 2002
CALL LETTERS: WYKE-CA
LOCATION: CITRUS COUNTY, FL

CUSTOMER: CCARC
BEAM TILT: 0.25 DEGREES
FREQUENCY: 671.00 MHz



KESSLER & GEHMAN
TELECOMMUNICATIONS CONSULTING ENGINEERS
507 N.W. 60th Street, Suite C
Gainesville, Florida 32607

WYKE-CA CHANNEL 47+
CITRUS COUNTY, FLORIDA

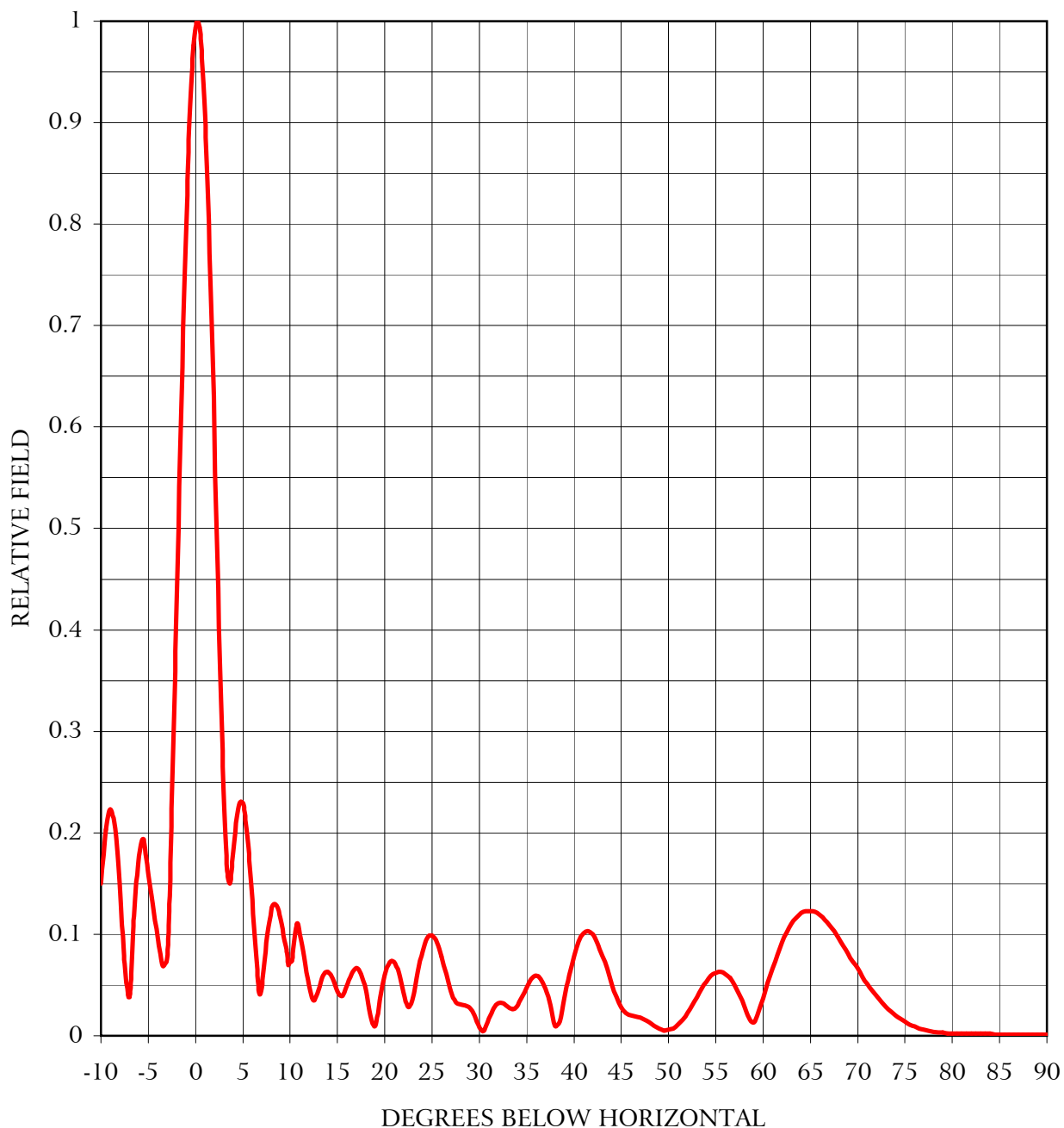
20020802

EXHIBIT 6

ELEVATION PATTERN

DATE: 02 AUG 2002
CALL LETTERS: WYKE-CA
LOCATION: CITRUS COUNTY, FL

CUSTOMER: CCARC
BEAM TILT: 0.25 DEGREES
FREQUENCY: 671.00 MHz



KESSLER & GEHMAN
TELECOMMUNICATIONS CONSULTING ENGINEERS
507 N.W. 60th Street, Suite C
Gainesville, Florida 32607

WYKE-CA CHANNEL 47+
CITRUS COUNTY, FLORIDA

20020802

EXHIBIT 7

WYKE-CA CHANNEL 47+

CITRUS COUNTY, FLORIDA

TABULATION OF ELEVATION PATTERN

ANGLE	FIELD	ANGLE	FIELD	ANGLE	FIELD	ANGLE	FIELD	ANGLE	FIELD	ANGLE	FIELD
-10.0	0.150	2.4	0.441	10.6	0.11	30.5	0.005	51	0.011	71.5	0.045
-9.5	0.203	2.6	0.366	10.8	0.11	31.0	0.017	52	0.016	72.0	0.039
-9.0	0.223	2.8	0.297	11.0	0.10	31.5	0.027	52	0.023	72.5	0.033
-8.5	0.204	3.0	0.235	11.5	0.08	32.0	0.032	53	0.030	73.0	0.028
-8.0	0.150	3.2	0.187	12.0	0.05	32.5	0.032	53	0.038	73.5	0.024
-7.5	0.071	3.4	0.157	12.5	0.04	33.0	0.029	54	0.046	74.0	0.020
-7.0	0.039	3.6	0.150	13.0	0.05	33.5	0.026	54	0.053	74.5	0.017
-6.5	0.118	3.8	0.162	13.5	0.06	34.0	0.029	55	0.059	75.0	0.014
-6.0	0.177	4.0	0.181	14.0	0.06	34.5	0.038	55	0.062	75.5	0.011
-5.5	0.194	4.2	0.201	14.5	0.06	35.0	0.048	56	0.063	76.0	0.009
-5.0	0.159	4.4	0.217	15.0	0.04	35.5	0.056	56	0.061	76.5	0.007
-4.5	0.130	4.6	0.228	15.5	0.04	36.0	0.059	57	0.057	77.0	0.006
-4.0	0.097	4.8	0.231	16.0	0.05	36.5	0.056	57	0.050	77.5	0.005
-3.5	0.069	5.0	0.229	16.5	0.06	37.0	0.046	58	0.040	78.0	0.004
-3.0	0.076	5.2	0.220	17.0	0.07	37.5	0.030	58	0.029	78.5	0.003
-2.8	0.123	5.4	0.205	17.5	0.06	38.0	0.010	59	0.018	79.0	0.003
-2.6	0.188	5.6	0.185	18.0	0.05	38.5	0.014	59	0.013	79.5	0.002
-2.4	0.261	5.8	0.161	18.5	0.02	39.0	0.037	60	0.023	80.0	0.002
-2.2	0.339	6.0	0.134	19.0	0.01	39.5	0.060	60	0.037	80.5	0.002
-2.0	0.420	6.2	0.106	19.5	0.04	40.0	0.079	61	0.052	81.0	0.002
-1.8	0.501	6.4	0.078	20.0	0.06	40.5	0.093	61	0.066	81.5	0.002
-1.6	0.582	6.6	0.054	20.5	0.07	41.0	0.101	62	0.080	82.0	0.002
-1.4	0.659	6.8	0.041	21.0	0.07	41.5	0.103	62	0.092	82.5	0.002
-1.2	0.732	7.0	0.047	21.5	0.06	42.0	0.100	63	0.102	83.0	0.002
-1.0	0.798	7.2	0.064	22.0	0.04	42.5	0.091	63	0.110	83.5	0.002
-0.8	0.857	7.4	0.083	22.5	0.03	43.0	0.079	64	0.116	84.0	0.002
-0.6	0.907	7.6	0.100	23.0	0.04	43.5	0.066	64	0.121	84.5	0.001
-0.4	0.947	7.8	0.113	23.5	0.06	44.0	0.051	65	0.123	85.0	0.001
-0.2	0.976	8.0	0.123	24.0	0.08	44.5	0.038	65	0.123	85.5	0.001
0.0	0.994	8.2	0.129	24.5	0.10	45.0	0.028	66	0.122	86.0	0.001
0.2	1.000	8.4	0.130	25.0	0.10	45.5	0.022	66	0.119	86.5	0.001
0.4	0.994	8.6	0.128	25.5	0.09	46.0	0.020	67	0.114	87.0	0.001
0.6	0.977	8.8	0.123	26.0	0.08	46.5	0.019	67	0.109	87.5	0.001
0.8	0.948	9.0	0.115	26.5	0.06	47.0	0.018	68	0.103	88.0	0.001
1.0	0.909	9.2	0.105	27.0	0.04	47.5	0.016	68	0.096	88.5	0.001
1.2	0.860	9.4	0.094	27.5	0.03	48.0	0.013	69	0.088	89.0	0.001
1.4	0.802	9.6	0.085	28.0	0.03	48.5	0.010	69	0.081	89.5	0.001
1.6	0.738	9.8	0.070	28.5	0.03	49.0	0.007	70	0.073	90.0	0.001
1.8	0.667	10.0	0.073	29.0	0.03	49.5	0.005	70	0.066		
2.0	0.593	10.2	0.074	29.5	0.02	50.0	0.006	71	0.058		
2.2	0.517	10.4	0.090	30.0	0.01	50.5	0.007	71	0.051		

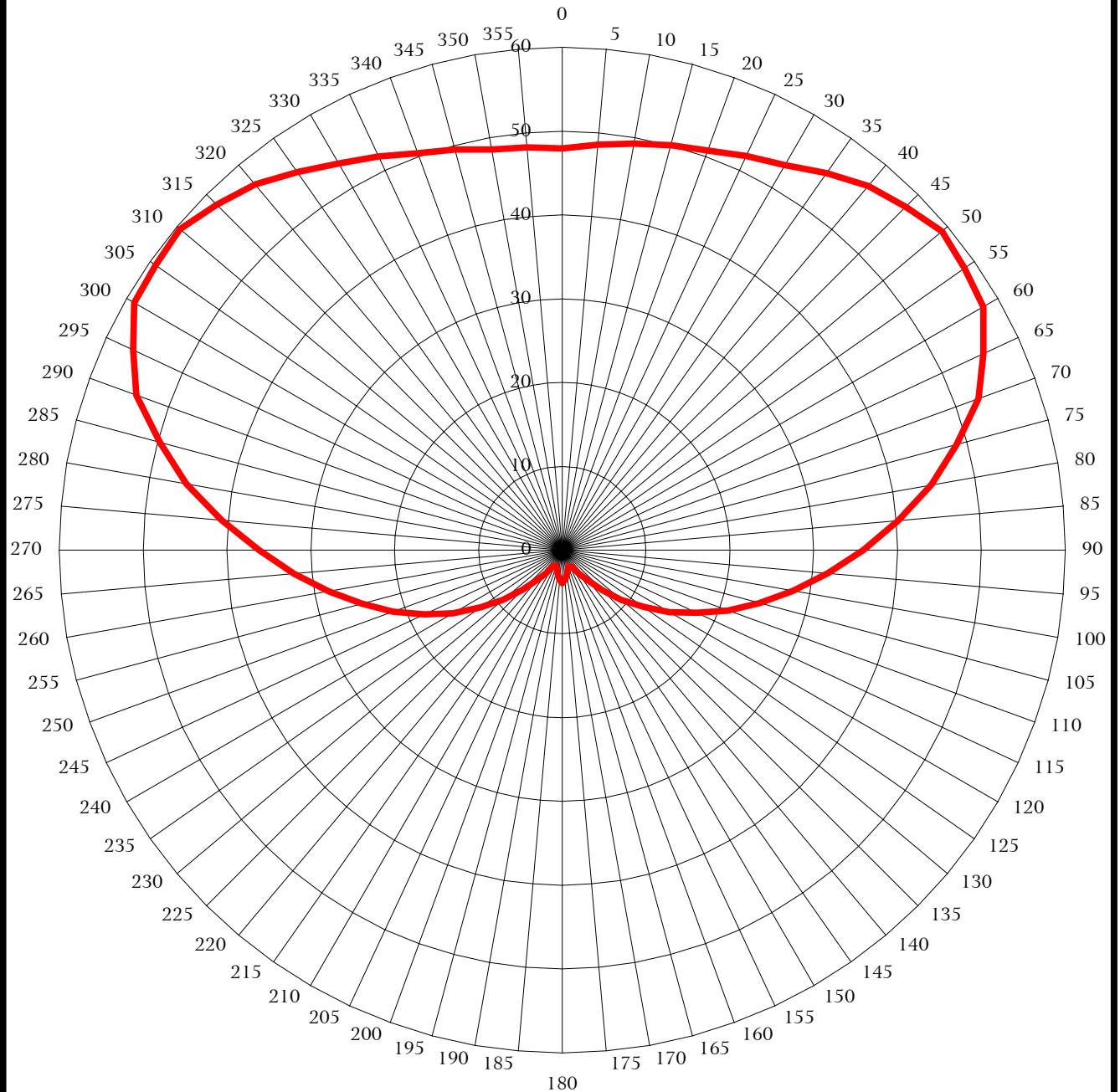
KESSLER & GEHMAN
 TELECOMMUNICATIONS CONSULTING ENGINEERS
 507 N.W. 60th Street, Suite C
 Gainesville, Florida 32607

WYKE-CA CH 47+
CITRUS COUNTY, FLORIDA

20020802

EXHIBIT 8

ERP - dBk



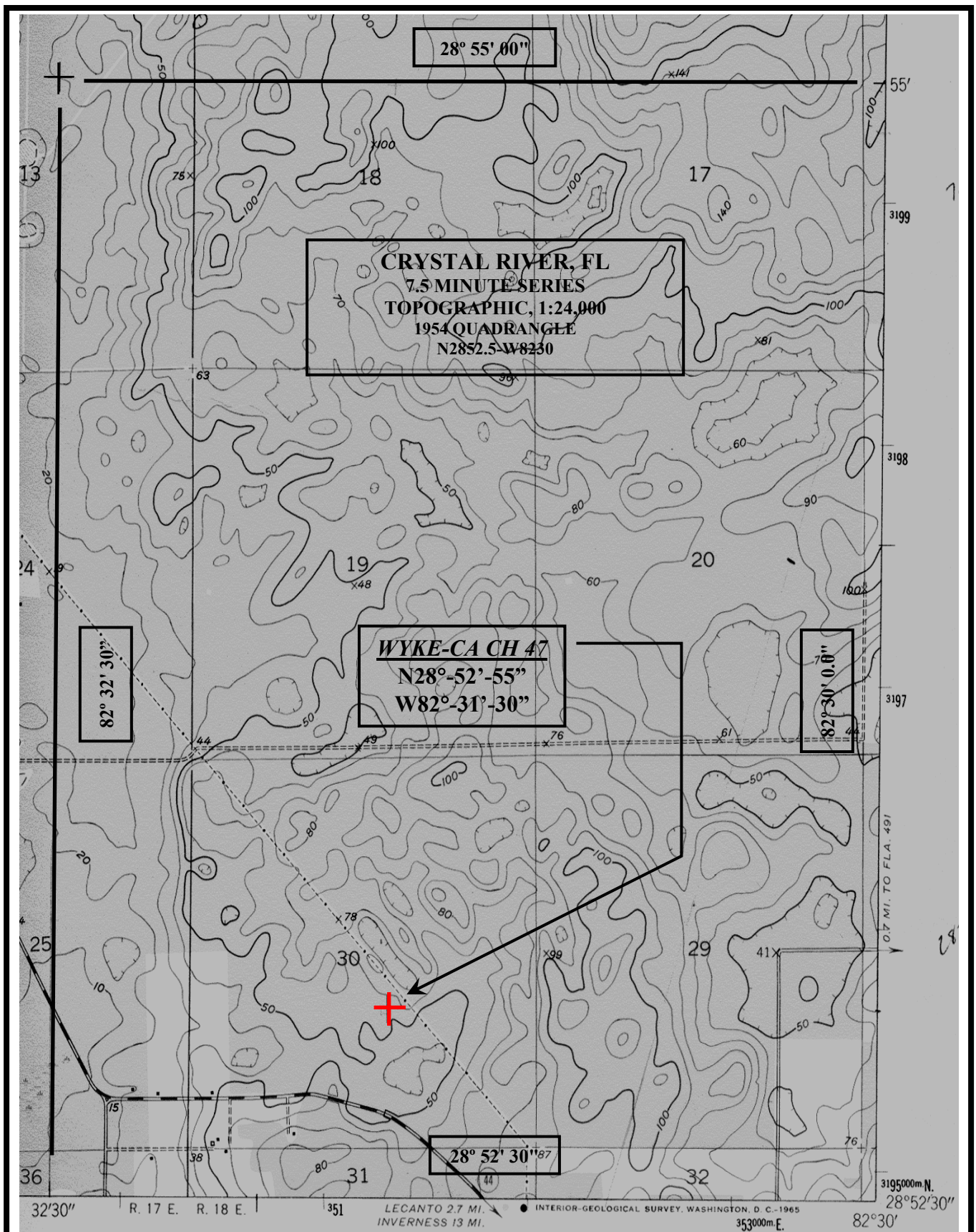
DIELECTRIC TFU-16-DSB-M (C)
030° ANTENNA ROTATION (NOT SHOWN)
RMS GAIN AT MAIN LOBE: 1.90 (2.793 dB)
FREQUENCY: 671 MHz

KESSLER & GEHMAN
TELECOMMUNICATIONS CONSULTING ENGINEERS
507 N.W. 60th Street, Suite C
Gainesville, Florida 32607

WYKE-CA CHANNEL 47+
CITRUS COUNTY, FLORIDA

20020802

EXHIBIT 9



KESSLER & GEHMAN

TELECOMMUNICATIONS CONSULTING ENGINEERS

507 N.W. 60th Street, Suite C
Gainesville, Florida 32607

WYKE-CA CHANNEL 47+

CITRUS COUNTY, FL

20020802

EXHIBIT 10

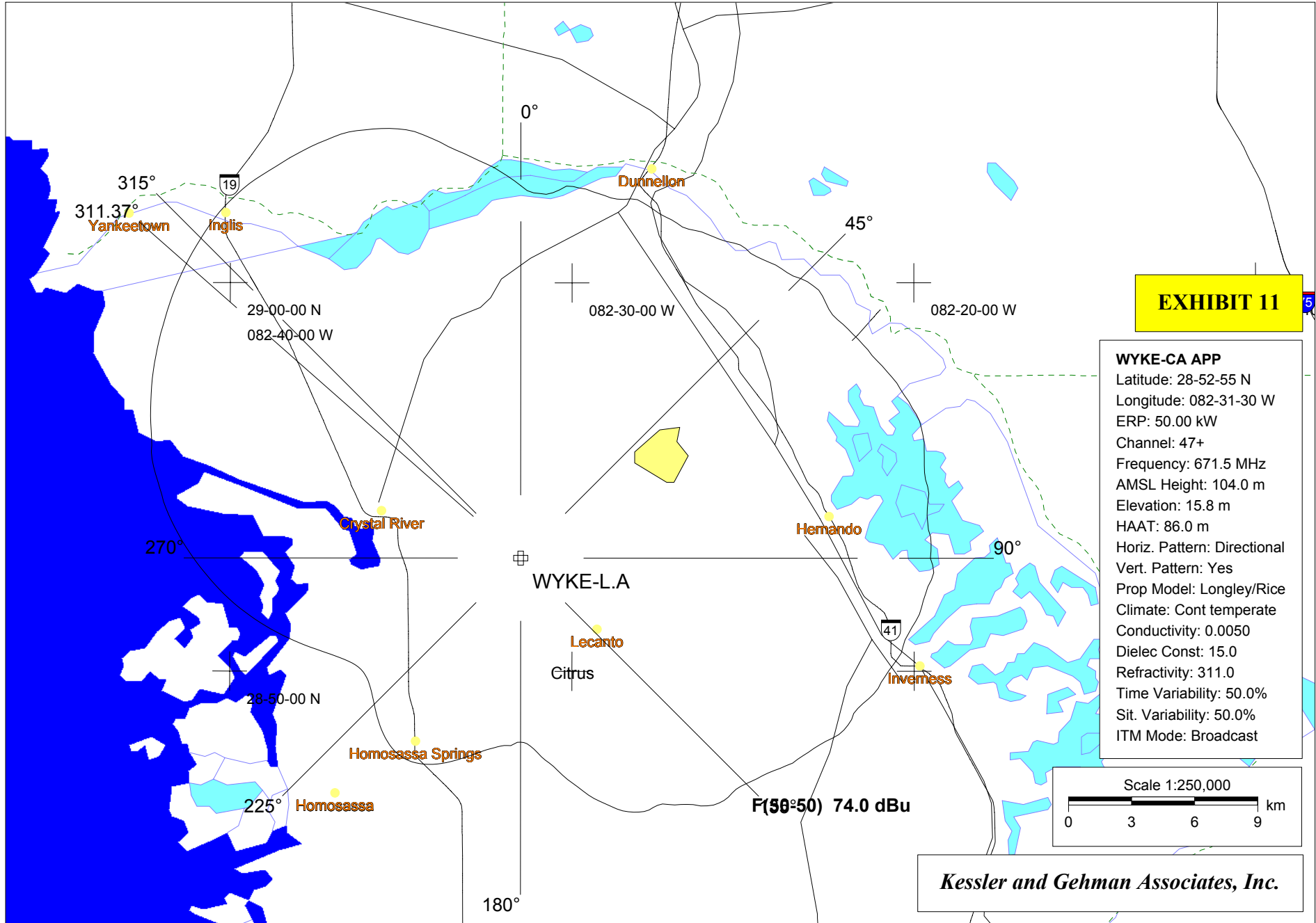


EXHIBIT 11

WYKE-CA APP
Latitude: 28-52-55 N
Longitude: 082-31-30 W
ERP: 50.00 kW
Channel: 47+
Frequency: 671.5 MHz
AMSL Height: 104.0 m
Elevation: 15.8 m
HAAT: 86.0 m
Horiz. Pattern: Directional
Vert. Pattern: Yes
Prop Model: Longley/Rice
Climate: Cont temperate
Conductivity: 0.0050
Dielec Const: 15.0
Refractivity: 311.0
Time Variability: 50.0%
Sit. Variability: 50.0%
ITM Mode: Broadcast

***** TV CHANNEL INTERFERENCE STUDY *****

Job title: WYKE-CA Channel 47+ LPTV Studies
 Proposed latitude: N 28 52 55.00
 Proposed longitude: W 82 31 30.00
 Proposed transmit antenna elevation(AMSL): 104.0 meters
 Proposed maximum ERP: 50.0000 kW
 Proposed offset: + offset
 Proposed zone: 3

Proposed channel: 47

CH	Call	Record	City	ST	Z	Status	Bear.	Dist.	Reqd. Dist.	Result
54o	ALLOTM	3508	LEHIGH ACRES	FL	3	ADD	157.4	263.9	0.0	
32o	WMOR-TV	3524	LAKELAND	FL	3	LIC	153.9	128.8	63.6	
Existing WMOR-T F(50,50) 64 dBu 63.6 km										
48o	ALLOTM	3525	SEBRING	FL	3		145.2	186.9	0.0	
45-	WLCB-TV	3582	LEESBURG	FL	3	LIC	108.0	72.3	32.0	
32 km distance separation requirement from Part 74.705(b) (5)										
45-	WLCB-TV	3583	LEESBURG	FL	3	CP MOD	108.0	72.3	32.0	
32 km distance separation requirement from Part 74.705(b) (5)										
46	WLCB-TV	3585	LEESBURG	FL	3	CP	102.8	144.6	122.5	
Prop F(50,10) 89 dBu 9.0 km + WLCB-T F(50,90) 41 dBu 113.5 km = 122.5										
Prop F(50,50) 74 dBu 22.0 km + WLCB-T F(50,50) 89 dBu 38.2 km = 60.3										
47o	W47AL	3586	ORLANDO	FL	0	LIC	104.5	103.3	100.8	2.6
Prop F(50,10) 46 dBu 81.8 km + W47AL F(50,50) 74 dBu 19.0 km = 100.8										
Prop F(50,50) 74 dBu 21.9 km + W47AL F(50,10) 46 dBu 66.7 km = 88.6										
48	WOPX	3587	MELBOURNE	FL	3	CP	122.3	162.6	120.2	
Prop F(50,10) 89 dBu 8.1 km + WOPX F(50,90) 41 dBu 112.1 km = 120.2										
Prop F(50,50) 74 dBu 19.9 km + WOPX F(50,50) 89 dBu 37.9 km = 57.8										
46	WLCB-TV	3601	LEESBURG	FL	0	CPAPP	91.8	73.3	57.8	
Prop F(50,10) 89 dBu 9.3 km + WLCB-T F(50,90) 41 dBu 48.5 km = 57.8										
Prop F(50,50) 74 dBu 22.7 km + WLCB-T F(50,50) 89 dBu 6.5 km = 29.2										
42o	ALLOTM	3616	PALATKA	FL	3		45.2	121.2	0.0	
48-	WJGV-LP	3617	PALATKA	FL	0	LIC	45.7	111.5	29.7	
Prop F(50,10) 89 dBu 9.0 km + WJGV-L F(50,50) 74 dBu 19.0 km = 27.9										
Prop F(50,50) 74 dBu 22.0 km + WJGV-L F(50,50) 89 dBu 7.8 km = 29.7										
47-	WTEV-TV	3657	JACKSONVILLE	FL	3	LIC	30.7	180.3	211.4	-31.1
Prop F(50,10) 36 dBu 133.2 km + WTEV-T F(50,50) 64 dBu 78.2 km = 211.4										
Prop F(50,50) 74 dBu 21.7 km + WTEV-T F(50,10) 46 dBu 206.9 km = 228.6										
42o	WXPX	4007	BRADENTON	FL	3	APP	167.6	120.6	32.0	
32 km distance separation requirement from Part 74.705(b) (5)										
42o	WXPX	4008	BRADENTON	FL	3	APP	167.6	120.6	32.0	

32 km distance separation requirement from Part 74.705(b) (5)

44+ WTOG 4009 ST. PETERSBURG FL 3 LIC 167.7 119.4 32.0
32 km distance separation requirement from Part 74.705(b) (5)

47 WFTT 4010 TAMPA FL 3 CP 167.4 118.1 267.5 -149.4
Prop F(50,10) 20 dBu 171.2 km + WFTT F(50,90) 41 dBu 96.3 km = 267.5
Prop F(50,50) 74 dBu 12.2 km + WFTT F(50,10) 29 dBu 255.7 km = 267.8

50o WFTT 4014 TAMPA FL 3 LIC 167.4 118.1 32.0
32 km distance separation requirement from Part 74.705(b) (5)

50o WFTT 4015 TAMPA FL 3 CP 167.4 118.1 32.0
32 km distance separation requirement from Part 74.705(b) (5)

47 WFTT 4040 TAMPA FL 0 CPAPP 167.4 118.1 220.2 -102.1
Prop F(50,10) 20 dBu 171.2 km + WFTT F(50,90) 41 dBu 49.0 km = 220.2
Prop F(50,50) 74 dBu 12.2 km + WFTT F(50,10) 29 dBu 188.9 km = 201.1

46+ W46BQ 4054 PORT RICHEY, ETC. FL 0 LIC 195.3 64.1 17.1
Prop F(50,10) 89 dBu 4.2 km + W46BQ F(50,50) 74 dBu 12.9 km = 17.1
Prop F(50,50) 74 dBu 10.0 km + W46BQ F(50,50) 89 dBu 5.6 km = 15.6

48+ W48AY 4056 OLDSMAR FL 0 LIC 187.8 94.3 27.1
Prop F(50,10) 89 dBu 3.9 km + W48AY F(50,50) 74 dBu 23.1 km = 27.1
Prop F(50,50) 74 dBu 9.4 km + W48AY F(50,50) 89 dBu 9.5 km = 18.9

51- WOGX 4094 OCALA FL 3 LIC 19.5 56.1 32.0
32 km distance separation requirement from Part 74.705(b) (5)

33o ALLOTM 4434 VALDOSTA GA 3 341.7 228.0 0.0

47+ WWWF-LP 4878 TALLAHASSEE FL 0 LIC 316.9 246.7 238.3 8.3
Prop F(50,10) 29 dBu 174.6 km + WWWF-L F(50,50) 74 dBu 34.5 km = 209.1
Prop F(50,50) 74 dBu 22.1 km + WWWF-L F(50,10) 29 dBu 216.2 km = 238.3

***** End of channel 47 study *****

TV INTERFERENCE and SPACING ANALYSIS PROGRAM

Date: 08-01-2002 Time: 10:08:14

Record Selected for Analysis

WYKE-CA CUR -PROPOSED Inglis-yankeetown FL US
 Channel 47 ERP 50.0 kW HAAT 00086 m RCAMSL 00104 m
 Latitude 028-52-55 Longitude 0082-31-30
 Status Zone Border Offset +
 Dir Antenna Make CDB Model 000000000000001 Beam tilt N Ref Azimuth 30.0
 Last update 00000000 Cutoff date 00000000 Docket
 Comments
 Applicant

Cell Size for Service Analysis 2.0 km/side

Distance Increments for Longley-Rice Analysis 1.00 km

Not full service station

Maximum height/power limits not checked

Azimuth (Deg)	ERP (kW)	HAAT (m)	74.0 dBu F(50,50) (km)
0.0	44.557	69.0	17.9
45.0	41.816	79.5	19.0
90.0	48.511	78.3	19.6
135.0	20.384	78.8	15.3
180.0	1.940	83.4	8.8
225.0	2.101	102.2	9.9
270.0	12.600	103.6	15.6
315.0	41.587	100.7	21.6

Evaluation from Class A Station

Contour overlap to station

WTEV-TV 47 JACKSONVILLE FL BLCT 19881116KG

D/U ratio at contour 26.3 dB

Offset Proposed + Offset Protected - Required D/U ratio: 28.0

Radial 180.0 degrees

Bearing to point on contour 50.0 degrees

D/U ratio at contour 24.7 dB

Radial 190.0 degrees

Bearing to point on contour 45.0 degrees

D/U ratio at contour 23.6 dB

Radial 200.0 degrees

Bearing to point on contour 38.8 degrees

D/U ratio at contour 23.2 dB

Radial 210.0 degrees

Bearing to point on contour 31.5 degrees
D/U ratio at contour 23.6 dB
Radial 220.0 degrees
Bearing to point on contour 24.0 degrees
D/U ratio at contour 24.7 dB
Radial 230.0 degrees
Bearing to point on contour 17.5 degrees
D/U ratio at contour 26.2 dB
Radial 240.0 degrees
Bearing to point on contour 12.1 degrees

Contour overlap to station

WBHS-DT 47 TAMPA FL BPCDT 19980806KH
D/U ratio at contour -21.0 dB
Offset Proposed + Offset Protected Required D/U ratio: 2.0
Radial 0.0 degrees
Bearing to point on contour 128.9 degrees
D/U ratio at contour -14.0 dB
Radial 10.0 degrees
Bearing to point on contour 117.7 degrees
D/U ratio at contour -7.6 dB
Radial 20.0 degrees
Bearing to point on contour 114.3 degrees
D/U ratio at contour -3.4 dB
Radial 30.0 degrees
Bearing to point on contour 114.4 degrees
D/U ratio at contour -0.1 dB
Radial 40.0 degrees
Bearing to point on contour 116.2 degrees
D/U ratio at contour -0.9 dB
Radial 320.0 degrees
Bearing to point on contour 220.3 degrees
D/U ratio at contour -9.7 dB
Radial 330.0 degrees
Bearing to point on contour 213.9 degrees
D/U ratio at contour -15.6 dB
Radial 340.0 degrees
Bearing to point on contour 195.1 degrees
D/U ratio at contour -23.2 dB
Radial 350.0 degrees
Bearing to point on contour 157.6 degrees

Contour overlap to station

WBHS-DT 47 TAMPA FL DTVPLN DTVP1290
D/U ratio at contour -19.7 dB
Offset Proposed + Offset Protected Required D/U ratio: 2.0
Radial 0.0 degrees
Bearing to point on contour 132.1 degrees
D/U ratio at contour -13.3 dB
Radial 10.0 degrees
Bearing to point on contour 120.4 degrees
D/U ratio at contour -7.4 dB
Radial 20.0 degrees
Bearing to point on contour 116.5 degrees
D/U ratio at contour -3.3 dB
Radial 30.0 degrees
Bearing to point on contour 116.2 degrees

D/U ratio at contour -0.1 dB
 Radial 40.0 degrees
 Bearing to point on contour 117.6 degrees
 D/U ratio at contour -0.9 dB
 Radial 320.0 degrees
 Bearing to point on contour 217.9 degrees
 D/U ratio at contour -9.2 dB
 Radial 330.0 degrees
 Bearing to point on contour 210.9 degrees
 D/U ratio at contour -13.6 dB
 Radial 340.0 degrees
 Bearing to point on contour 192.3 degrees
 D/U ratio at contour -21.3 dB
 Radial 350.0 degrees
 Bearing to point on contour 158.7 degrees

Contour overlap to station
 WFTT-DT 47 TAMPA FL BMPCDT 20020603ABD
 D/U ratio at contour -22.9 dB
 Offset Proposed + Offset Protected Required D/U ratio: 2.0
 Radial 0.0 degrees
 Bearing to point on contour 123.9 degrees
 D/U ratio at contour -14.6 dB
 Radial 10.0 degrees
 Bearing to point on contour 114.8 degrees
 D/U ratio at contour -7.7 dB
 Radial 20.0 degrees
 Bearing to point on contour 114.1 degrees
 D/U ratio at contour -3.3 dB
 Radial 30.0 degrees
 Bearing to point on contour 116.2 degrees
 D/U ratio at contour 0.0 dB
 Radial 40.0 degrees
 Bearing to point on contour 119.1 degrees
 D/U ratio at contour -0.6 dB
 Radial 320.0 degrees
 Bearing to point on contour 224.0 degrees
 D/U ratio at contour -10.2 dB
 Radial 330.0 degrees
 Bearing to point on contour 219.3 degrees
 D/U ratio at contour -19.1 dB
 Radial 340.0 degrees
 Bearing to point on contour 200.6 degrees
 D/U ratio at contour -26.6 dB
 Radial 350.0 degrees
 Bearing to point on contour 155.2 degrees

Contour Overlap Evaluation from Class A Complete

Proposed facility OK to FCC Monitoring Stations

Proposed facility OK toward West Virginia quite zone

Proposed facility OK toward Table Mountain

Proposed facility is beyond the Canadian coordination distance

Proposed facility is beyond the Mexican coordination distance

Proposed station is OK toward AM broadcast stations

Start of Interference Analysis

Channel	Proposed Station Call	City/State	ARN	
47	WYKE-CA	Inglis-yankeetown FL	CUR	PROPOSED

Stations Potentially Affected by Proposed Station

Chan	Call	City/State	Dist(km)	Status	Application	Ref. No.
32	WWWB	LAKELAND FL	129.1		BLCT	-19961018KF
33	W33BL	CHIEFLAND FL	70.8	LIC	BLTTL	-19960415IC
33	WBXG-LP	GAINESVILLE FL	85.3	CP	BPTTL	-20010710AAL
33	WBXG-CA	GAINESVILLE FL	84.0	APP	BMPTTA	-20020510AAK
40	WTMO-LP	KISSIMMEE FL	114.6	LIC	BLTTL	-19931025ID
40	WWSB	SARASOTA FL	148.2	CP	BPCT	-19991012AAS
40	WWSB	SARASOTA FL	148.0	LIC	BLCT	-19790920KI
43	WJXE-LP	GAINESVILLE FL	96.3	CP	BPTTL	-JG0601QD
44	WTOG	ST. PETERSBURG FL	119.7	LIC	BLCT	-19990415KI
45	WYPN-CA	GAINESVILLE FL	75.3	CP	BMJPTTA	-20011219AAA
45	WLCB-TV	LEESBURG FL	72.2	CP MOD	BMPET	-20000717AAM
45	WLCB-TV	LEESBURG FL	72.2	LIC	BLET	-20001212AAT
46	WLCB-DT	LEESBURG FL	144.3	CP	BPEDT	-20000428ACP
46	WLCB-DT	LEESBURG FL	73.1	PLN	DTVPLN	-DTVP1256
47	WYHS-DT	HOLLYWOOD FL	396.5	PLN	DTVPLN	-DTVP1288
47	WAMI-DT	HOLLYWOOD FL	395.6	APP	BMPCDT	-20011022AAN
47	WAMI-DT	HOLLYWOOD FL	396.4	CP	BPCDT	-19981030KF
47	WAMI-DT	HOLLYWOOD FL	395.6	APP	BMPCDT	-20011022AAN
47	WTEV-TV	JACKSONVILLE FL	180.6	LIC	BLCT	-19881116KG
47	WPCT-DT	PANAMA CITY BEACH FL	346.3	PLN	DTVPLN	-DTVP1289
47	WBHS-DT	TAMPA FL	118.4	CP	BPCDT	-19980806KH
47	WBHS-DT	TAMPA FL	118.4	PLN	DTVPLN	-DTVP1290
47	WFTT-DT	TAMPA FL	118.4	APP	BMPCDT	-20020603ABD
48	WFXU-DT	LIVE OAK FL	191.4	PLN	DTVPLN	-DTVP1319
48	WOPX-DT	MELBOURNE FL	162.5	CP	BPCDT	-19990507KH
48	WIRB-DT	MELBOURNE FL	162.5	PLN	DTVPLN	-DTVP1320
48	W48AY	OLDSMAR FL	94.5	LIC	BLTTL	-19950515IB
48	WJGV-LP	PALATKA FL	111.5	LIC	BLTTL	-20010614ADP
50	WBHS-TV	TAMPA FL	118.4	CP	BPCT	-19960710KG
50	WBHS-TV	TAMPA FL	118.4	LIC	BLCT	-19880616KH
55	WACX	LEESBURG FL	117.4	LIC	BLCT	-19860319KE

%%%

Analysis of Interference to Affected Station 1

NTSC Baseline Analysis

Channel	Call	City/State	Application Ref. No.
---------	------	------------	----------------------

Stations Potentially Affecting This Station

Chan	Call	City/State	Dist(km)	Status	Application	Ref. No.
24	WTSP-DT	ST. PETERSBURG FL	88.6	PLN	DTVPLN	-DTVP0528
25	WBSV-DT	VENICE FL	92.0	PLN	DTVPLN	-DTVP0563
29	WFTS-DT	TAMPA FL	30.9	PLN	DTVPLN	-DTVP0697
30	WBCC-DT	COCOA FL	114.1	PLN	DTVPLN	-DTVP0733
31	WGPU-DT	FORT MYERS FL	115.1	PLN	DTVPLN	-DTVP0769
31	WOGX-DT	OCALA FL	173.2	PLN	DTVPLN	-DTVP0770
32	WAWS-DT	JACKSONVILLE FL	274.1	PLN	DTVPLN	-DTVP0808
32	WBFS-DT	MIAMI FL	270.1	PLN	DTVPLN	-DTVP0809
32	WFSU-DT	TALLAHASSEE FL	381.2	PLN	DTVPLN	-DTVP0810
33	WCEU-DT	NEW SMYRNA BEACH FL	167.4	PLN	DTVPLN	-DTVP0845
33	WRXY-DT	TICE FL	117.9	PLN	DTVPLN	-DTVP0846
34	WUSF-DT	TAMPA FL	31.0	PLN	DTVPLN	-DTVP0880
35	WFTX-DT	CAPE CORAL FL	116.7	PLN	DTVPLN	-DTVP0915
39	WFTV-DT	ORLANDO FL	119.3	PLN	DTVPLN	-DTVP1026
40	WACX-DT	LEESBURG FL	135.2	PLN	DTVPLN	-DTVP1059
46	WLCB-DT	LEESBURG FL	114.9	PLN	DTVPLN	-DTVP1256
47	WBHS-DT	TAMPA FL	30.9	PLN	DTVPLN	-DTVP1290
30	WGPU	FORT MYERS FL	115.1	PLN	DTVPLN	-NPLN0256
36	WFTX	CAPE CORAL FL	116.7	PLN	DTVPLN	-NPLN0266
24	WMFETV	ORLANDO FL	119.3	PLN	DTVPLN	-NPLN0343
25	WPBF	TEQUESTA FL	172.6	PLN	DTVPLN	-NPLN0346
35	WOFL	ORLANDO FL	119.9	PLN	DTVPLN	-NPLN0365
40	WWSB	SARASOTA FL	51.6	PLN	DTVPLN	-NPLN0370
46	WTVK	NAPLES FL	160.4	PLN	DTVPLN	-NPLN0378

Results for: 32N FL LAKELAND

DTVPLN NPLN0359

PLN

	POPULATION	AREA (sq km)
within Noise Limited Contour	2428627	17464.5
not affected by terrain losses	2428627	17464.5
lost to NTSC IX	0	0.0
lost to additional IX by ATV	0	0.0
lost to all IX	0	0.0

Analysis of current record

Channel	Call	City/State	Application	Ref. No.
32	WWWB	LAKELAND FL	BLCT	-19961018KF

Stations Potentially Affecting This Station

Chan	Call	City/State	Dist(km)	Status	Application	Ref. No.
24	WMFE-TV	ORLANDO FL	119.3	CP	BPET	-20010615BEH
24	WTSP-DT	ST. PETERSBURG FL	88.6	PLN	DTVPLN	-DTVP0528
24	WTSP	ST. PETERSBURG FL	88.6	CP MOD	BMPCDT	-20000501AFO
25	WPBF	TEQUESTA FL	172.6	LIC	BLCT	-19990817LC
25	WVEA-DT	VENICE FL	30.8	CP	BPCDT	-19991029ACK
25	WBSV-DT	VENICE FL	92.0	PLN	DTVPLN	-DTVP0563
29	WFTS-DT	TAMPA FL	30.9	CP MOD	BMPCDT	-19991230ABA
29	WFTS-DT	TAMPA FL	30.9	PLN	DTVPLN	-DTVP0697
30	WBCC	COCOA FL	122.2	CP	BPEDT	-20000427ACN
30	WBCC-DT	COCOA FL	114.1	PLN	DTVPLN	-DTVP0733
30	WGPU	FORT MYERS FL	115.1	LIC	BLET	-19830630KG
31	WGPU-DT	FORT MYERS FL	115.1	PLN	DTVPLN	-DTVP0769

31	WOGX	OCALA FL	173.1	CP MOD	BMPCDT	-20010320AAK
31	WOGX-DT	OCALA FL	173.2	PLN	DTVPLN	-DTVP0770
32	WAWS-DT	JACKSONVILLE FL	274.0	CP MOD	BMPCDT	-20020219AAJ
32	WAWS-DT	JACKSONVILLE FL	274.1	PLN	DTVPLN	-DTVP0808
32	WBFS-DT	MIAMI FL	270.0	CP MOD	BMPCDT	-20011010AAG
32	WBFS-DT	MIAMI FL	270.1	PLN	DTVPLN	-DTVP0809
32	WFSU-DT	TALLAHASSEE FL	381.2	PLN	DTVPLN	-DTVP0810
33	WCEU	NEW SMYRNA BEACH FL	122.2	CP	BPEDT	-20000412AAQ
33	WCEU-DT	NEW SMYRNA BEACH FL	167.4	PLN	DTVPLN	-DTVP0845
33	WRXY-DT	TICE FL	117.9	CP	BPCDT	-19991028AFP
33	WRXY-DT	TICE FL	117.9	PLN	DTVPLN	-DTVP0846
34	WUSF-DT	TAMPA FL	31.0	CP	BPEDT	-19991217ACB
34	WUSF-DT	TAMPA FL	31.0	PLN	DTVPLN	-DTVP0880
35	WFTX	CAPE CORAL FL	116.8	CP	BPCDT	-19991028ADX
35	WFTX-DT	CAPE CORAL FL	116.7	PLN	DTVPLN	-DTVP0915
35	WOFL	ORLANDO FL	119.9	CP	BPCT	-19960626KE
36	WFTX	CAPE CORAL FL	116.8	CP	BPCT	-20000912AAI
39	960919LB	CRYSTAL RIVER FL	103.2	APP	BPEDT	-19960919LB
39	WFTV	ORLANDO FL	119.4	LIC	BLCDT	-20010430ABF
39	WFTV-DT	ORLANDO FL	119.3	PLN	DTVPLN	-DTVP1026
39	WFTV	ORLANDO FL	119.4	CP MOD	BMPCDT	-19991018ABA
40	WACX	LEESBURG FL	118.8	CP	BPCDT	-19991004ABN
40	WACX-DT	LEESBURG FL	135.2	PLN	DTVPLN	-DTVP1059
40	WWSB	SARASOTA FL	51.5	CP	BPCT	-19991012AAS
46	WLCB-DT	LEESBURG FL	118.8	CP	BPEDT	-20000428ACP
46	WLCB-DT	LEESBURG FL	114.9	PLN	DTVPLN	-DTVP1256
46	WTVK	NAPLES FL	117.9	CP	BPCT	-19991123AGQ
47	WBHS-DT	TAMPA FL	30.9	CP	BPCDT	-19980806KH
47	WBHS-DT	TAMPA FL	30.9	PLN	DTVPLN	-DTVP1290
47	WFTT-DT	TAMPA FL	30.9	APP	BMPCDT	-20020603ABD
47	WYKE-CA	Inglis-yankeetown FL	129.1		CUR	-PROPOSED

Proposal causes no interference

#####

Analysis of Interference to Affected Station 2

Analysis of current record

Channel	Call	City/State	Application	Ref. No.
33	W33BL	CHIEFLAND FL	BLTTL	-19960415IC

Stations Potentially Affecting This Station

Chan	Call	City/State	Dist(km)	Status	Application	Ref. No.
25	WJXX	ORANGE PARK FL	117.5	LIC	BLCT	-19971016KF
26	WNTD	DAYTONA BEACH FL	128.7	CP	BPCT	-19960709KS
31	WOGX	OCALA FL	47.8	CP MOD	BMPCDT	-20010320AAK
31	WOGX-DT	OCALA FL	47.5	PLN	DTVPLN	-DTVP0770
32	WAWS-DT	JACKSONVILLE FL	149.3	CP MOD	BMPCDT	-20020219AAJ
32	WAWS-DT	JACKSONVILLE FL	149.3	PLN	DTVPLN	-DTVP0808
32	WWWB	LAKELAND FL	199.8		BLCT	-19961018KF
32	WFSU-DT	TALLAHASSEE FL	200.0	PLN	DTVPLN	-DTVP0810
33	WDFX-DT	OZARK AL	331.5	CP	BPCDT	-19991018AAK
33	WDFX-DT	OZARK AL	331.5	PLN	DTVPLN	-DTVP0840
33	WCEU	NEW SMYRNA BEACH FL	194.7	CP	BPEDT	-20000412AAQ

33	WCEU-DT	NEW SMYRNA BEACH FL	163.2	PLN	DTVPLN	-DTVP0845
33	WRXY-DT	TICE FL	314.4	CP	BPCDT	-19991028AFP
33	WRXY-DT	TICE FL	314.4	PLN	DTVPLN	-DTVP0846
34	WJWB-DT	JACKSONVILLE FL	149.6	CP	BPCDT	-19991025AEM
34	WJWB-DT	JACKSONVILLE FL	149.6	PLN	DTVPLN	-DTVP0878
34	WUSF-DT	TAMPA FL	187.9	CP	BPEDT	-19991217ACB
34	WUSF-DT	TAMPA FL	187.9	PLN	DTVPLN	-DTVP0880
36	WUFT-DT	GAINESVILLE FL	47.8	PLN	DTVPLN	-DTVP0951
40	WTWC-TV	TALLAHASSEE FL	175.2	CP	BPCT	-20000804ADI
41	960724KW	LAKE CITY FL	108.6	APP	BPET	-19960724KW
47	WTEV-TV	JACKSONVILLE FL	149.3	LIC	BLCT	-19881116KG
48	WFXU-DT	LIVE OAK FL	121.9	PLN	DTVPLN	-DTVP1319
47	WYKE-CA	Inglis-yankeetown FL	70.8		CUR	-PROPOSED

Proposal causes no interference

#####

Analysis of Interference to Affected Station 3

Analysis of current record

Channel	Call	City/State	Application	Ref. No.
33	WBXG-LP	GAINESVILLE FL	BPTTL	-20010710AAL

Stations Potentially Affecting This Station

Chan	Call	City/State	Dist(km)	Status	Application	Ref. No.
25	WJXX	ORANGE PARK FL	76.1	LIC	BLCT	-19971016KF
26	WNTD	DAYTONA BEACH FL	98.0	CP	BPCT	-19960709KS
30	WAWS	JACKSONVILLE FL	108.2	CP MOD	BMPCT	-20011120AAF
31	WOGX	OCALA FL	32.9	CP MOD	BMPCDT	-20010320AAK
31	WOGX-DT	OCALA FL	32.8	PLN	DTVPLN	-DTVP0770
32	WAWS-DT	JACKSONVILLE FL	108.2	CP MOD	BMPCDT	-20020219AAJ
32	WAWS-DT	JACKSONVILLE FL	108.2	PLN	DTVPLN	-DTVP0808
32	WWWB	LAKELAND FL	205.9		BLCT	-19961018KF
33	WDFX-DT	OZARK AL	352.1	CP	BPCDT	-19991018AAK
33	WDFX-DT	OZARK AL	352.1	PLN	DTVPLN	-DTVP0840
33	WCEU	NEW SMYRNA BEACH FL	175.0	CP	BPEDT	-20000412AAQ
33	WCEU-DT	NEW SMYRNA BEACH FL	133.0	PLN	DTVPLN	-DTVP0845
33	WRXY-DT	TICE FL	323.5	CP	BPCDT	-19991028AFP
33	WRXY-DT	TICE FL	323.5	PLN	DTVPLN	-DTVP0846
33	WEBA-DT	ALLENDALE SC	405.6	PLN	DTVPLN	-DTVP0864
34	WJWB-DT	JACKSONVILLE FL	108.4	CP	BPCDT	-19991025AEM
34	WJWB-DT	JACKSONVILLE FL	108.4	PLN	DTVPLN	-DTVP0878
34	WUSF-DT	TAMPA FL	200.2	CP	BPEDT	-19991217ACB
34	WUSF-DT	TAMPA FL	200.2	PLN	DTVPLN	-DTVP0880
36	WUFT-DT	GAINESVILLE FL	7.7	PLN	DTVPLN	-DTVP0951
40	WACX-DT	LEESBURG FL	133.5	PLN	DTVPLN	-DTVP1059
40	WTWC-TV	TALLAHASSEE FL	188.6	CP	BPCT	-20000804ADI
41	960724KW	LAKE CITY FL	74.9	APP	BPET	-19960724KW
47	WTEV-TV	JACKSONVILLE FL	108.2	LIC	BLCT	-19881116KG
48	WFXU-DT	LIVE OAK FL	115.8	PLN	DTVPLN	-DTVP1319
47	WYKE-CA	Inglis-yankeetown FL	85.3		CUR	-PROPOSED

Proposal causes no interference

#####

Analysis of Interference to Affected Station 4

Analysis of current record

Channel	Call	City/State	Application	Ref. No.
33	WBXG-CA	GAINESVILLE FL	BMPTTA	-20020510AAK

Stations Potentially Affecting This Station

Chan	Call	City/State	Dist(km)	Status	Application	Ref. No.
25	WJXX	ORANGE PARK FL	76.8	LIC	BLCT	-19971016KF
26	WNTD	DAYTONA BEACH FL	97.4	CP	BPCT	-19960709KS
30	WAWS	JACKSONVILLE FL	109.0	CP MOD	BMPCT	-20011120AAF
31	WOGX	OCALA FL	31.6	CP MOD	BMPCDT	-20010320AAK
31	WOGX-DT	OCALA FL	31.5	PLN	DTVPLN	-DTVP0770
32	WAWS-DT	JACKSONVILLE FL	109.0	CP MOD	BMPCDT	-20020219AAJ
32	WAWS-DT	JACKSONVILLE FL	109.0	PLN	DTVPLN	-DTVP0808
32	WWWB	LAKELAND FL	204.7		BLCT	-19961018KF
33	WDFX-DT	OZARK AL	352.8	CP	BPCDT	-19991018AAK
33	WDFX-DT	OZARK AL	352.8	PLN	DTVPLN	-DTVP0840
33	WCEU	NEW SMYRNA BEACH FL	174.1	CP	BPEDT	-20000412AAQ
33	WCEU-DT	NEW SMYRNA BEACH FL	132.4	PLN	DTVPLN	-DTVP0845
33	WRXY-DT	TICE FL	322.2	CP	BPCDT	-19991028AFP
33	WRXY-DT	TICE FL	322.2	PLN	DTVPLN	-DTVP0846
33	WEBA-DT	ALLENDALE SC	406.8	PLN	DTVPLN	-DTVP0864
34	WJWB-DT	JACKSONVILLE FL	109.2	CP	BPCDT	-19991025AEM
34	WJWB-DT	JACKSONVILLE FL	109.2	PLN	DTVPLN	-DTVP0878
34	WUSF-DT	TAMPA FL	198.9	CP	BPEDT	-19991217ACB
34	WUSF-DT	TAMPA FL	198.9	PLN	DTVPLN	-DTVP0880
36	WUFT-DT	GAINESVILLE FL	8.9	PLN	DTVPLN	-DTVP0951
40	WACX-DT	LEESBURG FL	132.7	PLN	DTVPLN	-DTVP1059
40	WTWC-TV	TALLAHASSEE FL	189.4	CP	BPCT	-20000804ADI
41	960724KW	LAKE CITY FL	76.1	APP	BPET	-19960724KW
47	WTEV-TV	JACKSONVILLE FL	109.0	LIC	BLCT	-19881116KG
48	WFXU-DT	LIVE OAK FL	117.0	PLN	DTVPLN	-DTVP1319
47	WYKE-CA	Inglis-yankeetown FL	84.0		CUR	-PROPOSED

Proposal causes no interference

#####

Analysis of Interference to Affected Station 5

Analysis of current record

Channel	Call	City/State	Application	Ref. No.
40	WTMO-LP	KISSIMMEE FL	BLTTL	-19931025ID

Stations Potentially Affecting This Station

Chan	Call	City/State	Dist(km)	Status	Application	Ref. No.
32	WWWB	LAKELAND FL	72.0		BLCT	-19961018KF
33	WCEU	NEW SMYRNA BEACH FL	52.3	CP	BPEDT	-20000412AAQ
33	WCEU-DT	NEW SMYRNA BEACH FL	97.0	PLN	DTVPLN	-DTVP0845
38	WTTA	ST. PETERSBURG FL	93.3	CP	BPCT	-19950629KQ

39	960919LB	CRYSTAL RIVER FL	92.6	APP	BPEDT	-19960919LB
39	WFTV	ORLANDO FL	50.5	LIC	BLCDDT	-20010430ABF
39	WFTV-DT	ORLANDO FL	49.1	PLN	DTVPLN	-DTVP1026
39	WFTV	ORLANDO FL	50.5	CP MOD	BMPCDT	-19991018ABA
40	WPPB-TV	BOCA RATON FL	294.4	APP	BPRM	-20000328AAE
40	WPPB-DT	BOCA RATON FL	294.4	APP	BMPEDT	-20020201AAY
40	WACX	LEESBURG FL	49.0	CP	BPCDDT	-19991004ABN
40	WACX-DT	LEESBURG FL	65.3	PLN	DTVPLN	-DTVP1059
40	WWSB	SARASOTA FL	122.2	CP	BPCT	-19991012AAS
40	WTWC-TV	TALLAHASSEE FL	351.0	CP	BPCT	-20000804ADI
41	WZVN-DT	NAPLES FL	172.5	CP MOD	BMPCDT	-20020227ABM
41	WRBW-DT	ORLANDO FL	52.3	CP	BPCDDT	-20000501ADF
41	WRBW-DT	ORLANDO FL	49.3	PLN	DTVPLN	-DTVP1094
42	WXPX	BRADENTON FL	94.7	APP	BPCT	-20020215AAZ
42	WFCT-DT	BRADENTON FL	128.1	PLN	DTVPLN	-DTVP1124
42	WXPX	BRADENTON FL	94.7	APP	BPCT	-19980708KH
42	WXPX	BRADENTON FL	94.7	CP	BPCDDT	-19990602KF
43	WBSF	MELBOURNE FL	59.0	LIC	BLCT	-19980422KG
44	WTOG	ST. PETERSBURG FL	94.5	LIC	BLCT	-19990415KI
47	WBHS-DT	TAMPA FL	93.3	CP	BPCDDT	-19980806KH
47	WBHS-DT	TAMPA FL	93.3	PLN	DTVPLN	-DTVP1290
47	WFTT-DT	TAMPA FL	93.3	APP	BMPCDT	-20020603ABD
48	WOPX-DT	MELBOURNE FL	48.1	CP	BPCDDT	-19990507KH
48	WIRB-DT	MELBOURNE FL	48.1	PLN	DTVPLN	-DTVP1320
54	NEW	LEHIGH ACRES FL	186.4	ADD	BPRM	-19960725AAB
54	WEDU-DT	TAMPA FL	94.4	PLN	DTVPLN	-DTVP1472
55	WACX	LEESBURG FL	65.3	LIC	BLCT	-19860319KE
47	WYKE-CA	Inglis-yankeetown FL	114.6		CUR	-PROPOSED

Proposal causes no interference

#####

Analysis of Interference to Affected Station 6

NTSC Baseline Analysis

Channel	Call	City/State	Application	Ref. No.
40	WWSB	SARASOTA FL	DTVPLN	-NPLN0370

Stations Potentially Affecting This Station

Chan	Call	City/State	Dist(km)	Status	Application	Ref. No.
33	WRXY-DT	TICE FL	102.7	PLN	DTVPLN	-DTVP0846
39	WFTV-DT	ORLANDO FL	170.5	PLN	DTVPLN	-DTVP1026
40	WACX-DT	LEESBURG FL	183.0	PLN	DTVPLN	-DTVP1059
41	WZVN-DT	NAPLES FL	145.7	PLN	DTVPLN	-DTVP1093
41	WRBW-DT	ORLANDO FL	170.2	PLN	DTVPLN	-DTVP1094
42	WFCT-DT	BRADENTON FL	20.2	PLN	DTVPLN	-DTVP1124
47	WBHS-DT	TAMPA FL	33.2	PLN	DTVPLN	-DTVP1290
48	WIRB-DT	MELBOURNE FL	135.8	PLN	DTVPLN	-DTVP1320
54	WEDU-DT	TAMPA FL	31.8	PLN	DTVPLN	-DTVP1472
32	WWWB	LAKELAND FL	51.6	PLN	DTVPLN	-NPLN0359
38	WTTA	ST. PETERSBURG FL	33.2	PLN	DTVPLN	-NPLN0367
40	WTWCTV	TALLAHASSEE FL	382.5	PLN	DTVPLN	-NPLN0371
44	WTOG	ST. PETERSBURG FL	31.8	PLN	DTVPLN	-NPLN0375
55	WACX	LEESBURG FL	183.0	PLN	DTVPLN	-NPLN0389

Results for: 40N FL SARASOTA DTVPLN NPLN0370 PLN

	POPULATION	AREA (sq km)
within Noise Limited Contour	1999081	13432.4
not affected by terrain losses	1999081	13432.4
lost to NTSC IX	142016	481.4
lost to additional IX by ATV	4147	24.1
lost to all IX	146163	505.5

Analysis of current record

Channel	Call	City/State	Application	Ref. No.
40	WWSB	SARASOTA FL	BPCT	-19991012AAS

Stations Potentially Affecting This Station

Chan	Call	City/State	Dist(km)	Status	Application	Ref. No.
32	WWWB	LAKELAND FL	51.5		BLCT	-19961018KF
33	WRXY-DT	TICE FL	102.4	CP	BPCDT	-19991028AFP
33	WRXY-DT	TICE FL	102.4	PLN	DTVPLN	-DTVP0846
38	WTTA	ST. PETERSBURG FL	33.3	CP	BPCT	-19950629KQ
39	960919LB	CRYSTAL RIVER FL	125.2	APP	BPEDT	-19960919LB
39	WFTV	ORLANDO FL	170.8	LIC	BLCDT	-20010430ABF
39	WFTV-DT	ORLANDO FL	170.4	PLN	DTVPLN	-DTVP1026
39	WFTV	ORLANDO FL	170.8	CP MOD	BMPCDT	-19991018ABA
40	WPPB-TV	BOCA RATON FL	278.2	APP	BPRM	-20000328AAE
40	WPPB-DT	BOCA RATON FL	278.2	APP	BMPEDT	-20020201AAY
40	WACX	LEESBURG FL	170.0	CP	BPCDT	-19991004ABN
40	WACX-DT	LEESBURG FL	183.0	PLN	DTVPLN	-DTVP1059
40	WTWC-TV	TALLAHASSEE FL	380.8	CP	BPCT	-20000804ADI
41	WZVN-DT	NAPLES FL	100.8	CP MOD	BMPCDT	-20020227ABM
41	WZVN-DT	NAPLES FL	145.4	PLN	DTVPLN	-DTVP1093
41	WRBW-DT	ORLANDO FL	173.4	CP	BPCDT	-20000501ADF
41	WRBW-DT	ORLANDO FL	170.1	PLN	DTVPLN	-DTVP1094
42	WXPX	BRADENTON FL	31.0	APP	BPCT	-20020215AAZ
42	WFCT-DT	BRADENTON FL	19.9	PLN	DTVPLN	-DTVP1124
42	WXPX	BRADENTON FL	31.0	APP	BPCT	-19980708KH
42	WXPX	BRADENTON FL	31.0	CP	BPCDT	-19990602KF
44	WTOG	ST. PETERSBURG FL	31.9	LIC	BLCT	-19990415KI
47	WBHS-DT	TAMPA FL	33.3	CP	BPCDT	-19980806KH
47	WBHS-DT	TAMPA FL	33.3	PLN	DTVPLN	-DTVP1290
47	WFTT-DT	TAMPA FL	33.4	APP	BMPCDT	-20020603ABD
48	WOPX-DT	MELBOURNE FL	135.7	CP	BPCDT	-19990507KH
48	WIRB-DT	MELBOURNE FL	135.7	PLN	DTVPLN	-DTVP1320
54	NEW	LEHIGH ACRES FL	129.3	ADD	BPRM	-19960725AAB
54	WEDU-DT	TAMPA FL	31.9	PLN	DTVPLN	-DTVP1472
55	WACX	LEESBURG FL	183.0	LIC	BLCT	-19860319KE
47	WYKE-CA	Inglis-yankeetown FL	148.2		CUR	-PROPOSED

Proposal causes no interference

#####

Analysis of Interference to Affected Station 7

Analysis of current record

Channel	Call	City/State	Application	Ref. No.
---------	------	------------	-------------	----------

40 WWSB SARASOTA FL BLCT -19790920KI

Stations Potentially Affecting This Station

Chan	Call	City/State	Dist(km)	Status	Application	Ref. No.
32	WWWB	LAKELAND FL	51.6		BLCT	-19961018KF
33	WRXY-DT	TICE FL	102.7	CP	BPCDT	-19991028AFP
33	WRXY-DT	TICE FL	102.7	PLN	DTVPLN	-DTVP0846
38	WTTA	ST. PETERSBURG FL	33.2	CP	BPCT	-19950629KQ
39	960919LB	CRYSTAL RIVER FL	125.0	APP	BPEDT	-19960919LB
39	WFTV	ORLANDO FL	170.8	LIC	BLCDT	-20010430ABF
39	WFTV-DT	ORLANDO FL	170.5	PLN	DTVPLN	-DTVP1026
39	WFTV	ORLANDO FL	170.8	CP MOD	BMPCDT	-19991018ABA
40	WPPB-TV	BOCA RATON FL	278.5	APP	BPRM	-20000328AAE
40	WPPB-DT	BOCA RATON FL	278.5	APP	BMPEDT	-20020201AAY
40	WACX	LEESBURG FL	170.1	CP	BPCDT	-19991004ABN
40	WACX-DT	LEESBURG FL	183.0	PLN	DTVPLN	-DTVP1059
40	WTWC-TV	TALLAHASSEE FL	380.6	CP	BPCT	-20000804ADI
41	WZVN-DT	NAPLES FL	101.2	CP MOD	BMPCDT	-20020227ABM
41	WZVN-DT	NAPLES FL	145.7	PLN	DTVPLN	-DTVP1093
41	WRBW-DT	ORLANDO FL	173.5	CP	BPCDT	-20000501ADF
41	WRBW-DT	ORLANDO FL	170.2	PLN	DTVPLN	-DTVP1094
42	WXPX	BRADENTON FL	30.9	APP	BPCT	-20020215AAZ
42	WFCT-DT	BRADENTON FL	20.2	PLN	DTVPLN	-DTVP1124
42	WXPX	BRADENTON FL	30.9	APP	BPCT	-19980708KH
42	WXPX	BRADENTON FL	30.9	CP	BPCDT	-19990602KF
44	WTOG	ST. PETERSBURG FL	31.8	LIC	BLCT	-19990415KI
47	WBHS-DT	TAMPA FL	33.2	CP	BPCDT	-19980806KH
47	WBHS-DT	TAMPA FL	33.2	PLN	DTVPLN	-DTVP1290
47	WFTT-DT	TAMPA FL	33.3	APP	BMPCDT	-20020603ABD
48	WOPX-DT	MELBOURNE FL	135.8	CP	BPCDT	-19990507KH
48	WIRB-DT	MELBOURNE FL	135.8	PLN	DTVPLN	-DTVP1320
54	NEW	LEHIGH ACRES FL	129.6	ADD	BPRM	-19960725AAB
54	WEDU-DT	TAMPA FL	31.8	PLN	DTVPLN	-DTVP1472
55	WACX	LEESBURG FL	183.0	LIC	BLCT	-19860319KE
47	WYKE-CA	Inglis-yankeetown FL	148.0		CUR	-PROPOSED

Proposal causes no interference

#####

Analysis of Interference to Affected Station 8

Analysis of current record

Channel	Call	City/State	Application	Ref. No.
43	WJXE-LP	GAINESVILLE FL	BPTTL	-JG0601QD

Stations Potentially Affecting This Station

Chan	Call	City/State	Dist(km)	Status	Application	Ref. No.
36	WUFT-DT	GAINESVILLE FL	3.4	PLN	DTVPLN	-DTVP0951
39	960919LB	CRYSTAL RIVER FL	117.5	APP	BPEDT	-19960919LB
40	WACX-DT	LEESBURG FL	137.7	PLN	DTVPLN	-DTVP1059
41	960724KW	LAKE CITY FL	63.7	APP	BPET	-19960724KW
42	WJXT-DT	JACKSONVILLE FL	99.7	PLN	DTVPLN	-DTVP1125
43	WGIQ	LOUISVILLE AL	364.9	LIC	BLET	-19921016KG

43	WBSF	MELBOURNE FL	214.2	LIC	BLCT	-19980422KG
43	WVAG-DT	VALDOSTA GA	184.8	CP	BPCDT	-20010731ABH
43	WGVP-DT	VALDOSTA GA	184.8	PLN	DTVPLN	-DTVP1160
44	WJEB-DT	JACKSONVILLE FL	98.9	CP	BPEDT	-20000428ACG
44	WJEB-DT	JACKSONVILLE FL	99.0	PLN	DTVPLN	-DTVP1194
44	WJEB-TV	JACKSONVILLE FL	99.0	APP	BPET	-20020523AAR
44	WGVP	VALDOSTA GA	184.8	LIC	BLCT	-19951107KI
45	WLCB-TV	LEESBURG FL	129.9	CP MOD	BMPET	-20000717AAM
46	WLCB-DT	LEESBURG FL	114.4	PLN	DTVPLN	-DTVP1256
47	WTEV-TV	JACKSONVILLE FL	98.9	LIC	BLCT	-19881116KG
51	WOGX	OCALA FL	42.6	LIC	BLCT	-19831107KI
57	WFXU	LIVE OAK FL	108.4	LIC	BLCT	-19980715KE
47	WYKE-CA	Inglis-yankeetown FL	96.3		CUR	-PROPOSED

Proposed station is beyond the site to
nearest cell evaluation distance

#####

Analysis of Interference to Affected Station 9

NTSC Baseline Analysis

Channel	Call	City/State	Application	Ref. No.
44	WTOG	ST. PETERSBURG FL	DTVPLN	-NPLN0375

Stations Potentially Affecting This Station

Chan	Call	City/State	Dist(km)	Status	Application	Ref. No.
42	WFCT-DT	BRADENTON FL	46.9	PLN	DTVPLN	-DTVP1124
44	WPPB-DT	BOCA RATON FL	291.0	PLN	DTVPLN	-DTVP1193
44	WJEB-DT	JACKSONVILLE FL	280.3	PLN	DTVPLN	-DTVP1194
45	WTVK-DT	NAPLES FL	168.6	PLN	DTVPLN	-DTVP1227
46	WLCB-DT	LEESBURG FL	124.2	PLN	DTVPLN	-DTVP1256
47	WBHS-DT	TAMPA FL	1.4	PLN	DTVPLN	-DTVP1290
48	WIRB-DT	MELBOURNE FL	115.9	PLN	DTVPLN	-DTVP1320
52	WWSB-DT	SARASOTA FL	31.8	PLN	DTVPLN	-DTVP1433
59	WTOG-DT	ST. PETERSBURG FL	0.0	PLN	DTVPLN	-DTVP1570
36	WFTX	CAPE CORAL FL	123.8	PLN	DTVPLN	-NPLN0266
43	WBSF	MELBOURNE FL	142.9	PLN	DTVPLN	-NPLN0373
45	WLCBTV	LEESBURG FL	124.2	PLN	DTVPLN	-NPLN0376
51	WOGX	OCALA FL	170.1	PLN	DTVPLN	-NPLN0386
44	WGVP	VALDOSTA GA	386.3	PLN	DTVPLN	-NPLN0487

Results for: 44N FL ST. PETERSBURG	DTVPLN	NPLN0375	PLN
	POPULATION	AREA (sq km)	
within Noise Limited Contour	3123779	28343.6	
not affected by terrain losses	3123651	28335.6	
lost to NTSC IX	41583	1396.0	
lost to additional IX by ATV	0	0.0	
lost to all IX	41583	1396.0	

Analysis of current record

Channel	Call	City/State	Application	Ref. No.
44	WTOG	ST. PETERSBURG FL	BLCT	-19990415KI

Stations Potentially Affecting This Station

Chan	Call	City/State	Dist(km)	Status	Application	Ref. No.
36	WFTX	CAPE CORAL FL	123.8	CP	BPCT	-20000912AAI
41	WZVN-DT	NAPLES FL	122.5	CP MOD	BMPCDT	-20020227ABM
42	WXPX	BRADENTON FL	1.2	APP	BPCT	-20020215AAZ
42	WFCT-DT	BRADENTON FL	46.8	PLN	DTVPLN	-DTVP1124
42	WXPX	BRADENTON FL	1.2	APP	BPCT	-19980708KH
42	WXPX	BRADENTON FL	1.2	CP	BPCDT	-19990602KF
43	WBSF	MELBOURNE FL	143.0	LIC	BLCT	-19980422KG
44	WPPB-DT	BOCA RATON FL	291.0	CP	BPEDT	-19991028ACM
44	WPPB-DT	BOCA RATON FL	291.0	PLN	DTVPLN	-DTVP1193
44	WJEB-DT	JACKSONVILLE FL	280.7	CP	BPEDT	-20000428ACG
44	WJEB-DT	JACKSONVILLE FL	280.4	PLN	DTVPLN	-DTVP1194
44	WJEB-TV	JACKSONVILLE FL	280.4	APP	BPET	-20020523AAR
44	WGVP	VALDOSTA GA	386.4	LIC	BLCT	-19951107KI
45	WLCB-TV	LEESBURG FL	104.1	CP MOD	BMPET	-20000717AAM
45	WTVK	NAPLES FL	125.0	CP	BPCDT	-19991029AFN
45	WTVK-DT	NAPLES FL	168.5	PLN	DTVPLN	-DTVP1227
46	WLCB-DT	LEESBURG FL	124.2	PLN	DTVPLN	-DTVP1256
46	WTVK	NAPLES FL	125.0	CP	BPCT	-19991123AGQ
47	WBHS-DT	TAMPA FL	1.5	CP	BPCDT	-19980806KH
47	WBHS-DT	TAMPA FL	1.5	PLN	DTVPLN	-DTVP1290
47	WFTT-DT	TAMPA FL	1.5	APP	BMPCDT	-20020603ABD
48	WOPX-DT	MELBOURNE FL	115.9	CP	BPCDT	-19990507KH
48	WIRB-DT	MELBOURNE FL	115.9	PLN	DTVPLN	-DTVP1320
51	WOGX	OCALA FL	170.1	LIC	BLCT	-19831107KI
52	WWSB-DT	SARASOTA FL	31.9	CP	BPCDT	-19991014AAY
52	WWSB-DT	SARASOTA FL	31.8	PLN	DTVPLN	-DTVP1433
59	WTOG	ST PETERSBURG FL	2.1	CP	BPCDT	-19991027ABV
59	WTOG-DT	ST. PETERSBURG FL	0.1	PLN	DTVPLN	-DTVP1570
47	WYKE-CA	Inglis-yankeetown FL	119.7		CUR	-PROPOSED

Proposal causes no interference

#####

Analysis of Interference to Affected Station 10

Analysis of current record

Channel	Call	City/State	Application	Ref. No.
45	WYPN-CA	GAINESVILLE FL	BMJPTTA	-20011219AAA

Stations Potentially Affecting This Station

Chan	Call	City/State	Dist(km)	Status	Application	Ref. No.
38	WJCT-DT	JACKSONVILLE FL	110.0	CP	BPEDT	-19991220ACE
38	WJCT-DT	JACKSONVILLE FL	110.0	PLN	DTVPLN	-DTVP0986
38	WTTA	ST. PETERSBURG FL	188.3	CP	BPCT	-19950629KQ
42	WJXT-DT	JACKSONVILLE FL	110.4	PLN	DTVPLN	-DTVP1125
44	WJEB-DT	JACKSONVILLE FL	110.0	CP	BPEDT	-20000428ACG
44	WJEB-DT	JACKSONVILLE FL	110.0	PLN	DTVPLN	-DTVP1194
44	WJEB-TV	JACKSONVILLE FL	110.0	APP	BPET	-20020523AAR
44	WTOG	ST. PETERSBURG FL	189.7	LIC	BLCT	-19990415KI
45	WLCB-TV	LEESBURG FL	106.8	CP MOD	BMPET	-20000717AAM
45	WTVK	NAPLES FL	310.0	CP	BPCDT	-19991029AFN

45	WTVK-DT	NAPLES FL	352.6	PLN	DTVPLN	-DTVP1227
45	WGNM-TV	MACON GA	377.6	APP	BPRM	-20010226ABO
45	WMAZ-DT	MACON GA	376.4	PLN	DTVPLN	-DTVP1229
46	WLCB-DT	LEESBURG FL	160.1	CP	BPEDT	-20000428ACP
46	WLCB-DT	LEESBURG FL	92.0	PLN	DTVPLN	-DTVP1256
46	WCTV	THOMASVILLE GA	200.3	APP	BPRM	-20000328AAL
46	WCTV-DT	THOMASVILLE GA	200.3	CP	BPCDT	-20001113ABJ
47	WTEV-TV	JACKSONVILLE FL	109.9	LIC	BLCT	-19881116KG
48	WFXU-DT	LIVE OAK FL	130.9	PLN	DTVPLN	-DTVP1319
49	WNTD	DATYONA FL	118.8	CP	BPCDT	-19991029AER
49	WNTD-DT	DAYTONA BEACH FL	84.8	PLN	DTVPLN	-DTVP1345
52	WTGL-TV	COCOA FL	160.1	APP	BPCT	-20010808AAW
52	WTGL-TV	COCOA FL	193.4	LIC	BLCT	-19821006KG
53	WGFL	HIGH SPRINGS FL	26.5	LIC	BLCT	-19970926KE
59	WJEB-TV	JACKSONVILLE FL	110.0	LIC	BLET	-19910604KE
47	WYKE-CA	Inglis-yankeetown FL	75.3		CUR	-PROPOSED

Proposed station is beyond the site to
nearest cell evaluation distance

#####

Analysis of Interference to Affected Station 11

NTSC Baseline Analysis

Channel	Call	City/State	Application	Ref. No.
45	WLCBTV	LEESBURG FL	DTVPLN	-NPLN0376

Stations Potentially Affecting This Station

Chan	Call	City/State	Dist(km)	Status	Application	Ref. No.
41	WRBW-DT	ORLANDO FL	74.8	PLN	DTVPLN	-DTVP1094
44	WJEB-DT	JACKSONVILLE FL	158.7	PLN	DTVPLN	-DTVP1194
45	WTVK-DT	NAPLES FL	271.2	PLN	DTVPLN	-DTVP1227
46	WLCB-DT	LEESBURG FL	0.0	PLN	DTVPLN	-DTVP1256
47	WBHS-DT	TAMPA FL	122.8	PLN	DTVPLN	-DTVP1290
48	WIRB-DT	MELBOURNE FL	106.2	PLN	DTVPLN	-DTVP1320
49	WNTD-DT	DAYTONA BEACH FL	54.7	PLN	DTVPLN	-DTVP1345
59	WTOG-DT	ST. PETERSBURG FL	124.2	PLN	DTVPLN	-DTVP1570
52	WTGLTV	COCOA FL	104.1	PLN	DTVPLN	-NPLN0278
38	WTTA	ST. PETERSBURG FL	122.8	PLN	DTVPLN	-NPLN0367
43	WBSF	MELBOURNE FL	104.1	PLN	DTVPLN	-NPLN0373
44	WTOG	ST. PETERSBURG FL	124.2	PLN	DTVPLN	-NPLN0375
45	WHFT	MIAMI FL	355.6	PLN	DTVPLN	-NPLN0377
53	WGFL	HIGH SPRINGS FL	115.5	PLN	DTVPLN	-NPLN0387
59	WJEBTV	JACKSONVILLE FL	158.7	PLN	DTVPLN	-NPLN0394

Results for: 45N FL LEESBURG	DTVPLN	NPLN0376	PLN
	POPULATION	AREA (sq km)	
within Noise Limited Contour	1424957	11550.6	
not affected by terrain losses	1424957	11550.6	
lost to NTSC IX	5933	650.4	
lost to additional IX by ATV	0	0.0	
lost to all IX	5933	650.4	

Analysis of current record

Channel	Call	City/State	Application Ref. No.
45	WLCB-TV	LEESBURG FL	BMPET -20000717AAM

Stations Potentially Affecting This Station

Chan	Call	City/State	Dist(km)	Status	Application Ref. No.
38	WTTA	ST. PETERSBURG FL	102.7	CP	BPCT -19950629KQ
41	WRBW-DT	ORLANDO FL	74.7	CP	BPCDT -20000501ADF
41	WRBW-DT	ORLANDO FL	73.6	PLN	DTVPLN -DTVP1094
42	WXPX	BRADENTON FL	104.9	APP	BPCT -20020215AAZ
42	WXPX	BRADENTON FL	104.9	APP	BPCT -19980708KH
42	WXPX	BRADENTON FL	104.9	CP	BPCDT -19990602KF
43	WBSF	MELBOURNE FL	98.0	LIC	BLCT -19980422KG
44	WJEB-DT	JACKSONVILLE FL	179.6	CP	BPEDT -20000428ACG
44	WJEB-DT	JACKSONVILLE FL	179.1	PLN	DTVPLN -DTVP1194
44	WJEB-TV	JACKSONVILLE FL	179.1	APP	BPET -20020523AAR
44	WTOG	ST. PETERSBURG FL	104.1	LIC	BLCT -19990415KI
45	WHFT-TV	MIAMI FL	340.1	LIC	BLCT -19951208KF
45	WTVK	NAPLES FL	210.6	CP	BPCDT -19991029AFN
45	WTVK-DT	NAPLES FL	251.6	PLN	DTVPLN -DTVP1227
46	WLCB-DT	LEESBURG FL	72.8	CP	BPEDT -20000428ACP
46	WLCB-DT	LEESBURG FL	20.5	PLN	DTVPLN -DTVP1256
47	WBHS-DT	TAMPA FL	102.7	CP	BPCDT -19980806KH
47	WBHS-DT	TAMPA FL	102.7	PLN	DTVPLN -DTVP1290
47	WFTT-DT	TAMPA FL	102.7	APP	BMPCDT -20020603ABD
48	WOPX-DT	MELBOURNE FL	94.3	CP	BPCDT -19990507KH
48	WIRB-DT	MELBOURNE FL	94.3	PLN	DTVPLN -DTVP1320
49	WNTO	DATYONA FL	55.8	CP	BPCDT -19991029AER
49	WNTO-DT	DAYTONA BEACH FL	74.5	PLN	DTVPLN -DTVP1345
52	WTGL-TV	COCOA FL	72.8	APP	BPCT -20010808AAW
52	WTGL-TV	COCOA FL	97.9	LIC	BLCT -19821006KG
52	WWSB-DT	SARASOTA FL	135.8	CP	BPCDT -19991014AAY
52	WWSB-DT	SARASOTA FL	135.7	PLN	DTVPLN -DTVP1433
53	WTGL-TV	COCOA FL	72.8	APP	BPRM -20010511ABR
53	WTGL-DT	COCOA FL	72.8	APP	BPCDT -20000428ABS
53	WGFL	HIGH SPRINGS FL	128.4	LIC	BLCT -19970926KE
59	WJEB-TV	JACKSONVILLE FL	179.1	LIC	BLET -19910604KE
59	WTOG	ST PETERSBURG FL	102.1	CP	BPCDT -19991027ABV
59	WTOG-DT	ST. PETERSBURG FL	104.1	PLN	DTVPLN -DTVP1570
60	960920YT	SEBRING FL	136.0	APP	BPCT -19960920YT
47	WYKE-CA	Inglis-yankeetown FL	72.2	CUR	-PROPOSED

Proposal causes no interference

#####

Analysis of Interference to Affected Station 12

Analysis of current record

Channel	Call	City/State	Application Ref. No.
45	WLCB-TV	LEESBURG FL	BLET -20001212AAT

Stations Potentially Affecting This Station

Chan	Call	City/State	Dist(km)	Status	Application Ref. No.
------	------	------------	----------	--------	----------------------

38	WTTA	ST. PETERSBURG FL	102.7	CP	BPCT	-19950629KQ
41	WRBW-DT	ORLANDO FL	74.7	CP	BPCDT	-20000501ADF
41	WRBW-DT	ORLANDO FL	73.6	PLN	DTVPLN	-DTVP1094
42	WXPX	BRADENTON FL	104.9	APP	BPCT	-20020215AAZ
42	WXPX	BRADENTON FL	104.9	APP	BPCT	-19980708KH
42	WXPX	BRADENTON FL	104.9	CP	BPCDT	-19990602KF
43	WBSF	MELBOURNE FL	98.0	LIC	BLCT	-19980422KG
44	WJEB-DT	JACKSONVILLE FL	179.6	CP	BPEDT	-20000428ACG
44	WJEB-DT	JACKSONVILLE FL	179.1	PLN	DTVPLN	-DTVP1194
44	WJEB-TV	JACKSONVILLE FL	179.1	APP	BPET	-20020523AAR
44	WTOG	ST. PETERSBURG FL	104.1	LIC	BLCT	-19990415KI
45	WHFT-TV	MIAMI FL	340.1	LIC	BLCT	-19951208KF
45	WTVK	NAPLES FL	210.6	CP	BPCDT	-19991029AFN
45	WTVK-DT	NAPLES FL	251.6	PLN	DTVPLN	-DTVP1227
46	WLCB-DT	LEESBURG FL	72.8	CP	BPEDT	-20000428ACP
46	WLCB-DT	LEESBURG FL	20.5	PLN	DTVPLN	-DTVP1256
47	WBHS-DT	TAMPA FL	102.7	CP	BPCDT	-19980806KH
47	WBHS-DT	TAMPA FL	102.7	PLN	DTVPLN	-DTVP1290
47	WFTT-DT	TAMPA FL	102.7	APP	BMPCDT	-20020603ABD
48	WOPX-DT	MELBOURNE FL	94.3	CP	BPCDT	-19990507KH
48	WIRB-DT	MELBOURNE FL	94.3	PLN	DTVPLN	-DTVP1320
49	WNTD	DATYONA FL	55.8	CP	BPCDT	-19991029AER
49	WNTD-DT	DAYTONA BEACH FL	74.5	PLN	DTVPLN	-DTVP1345
52	WTGL-TV	COCOA FL	72.8	APP	BPCT	-20010808AAW
52	WTGL-TV	COCOA FL	97.9	LIC	BLCT	-19821006KG
52	WWSB-DT	SARASOTA FL	135.8	CP	BPCDT	-19991014AAY
52	WWSB-DT	SARASOTA FL	135.7	PLN	DTVPLN	-DTVP1433
53	WTGL-TV	COCOA FL	72.8	APP	BPRM	-20010511ABR
53	WTGL-DT	COCOA FL	72.8	APP	BPCDT	-20000428ABS
53	WGFL	HIGH SPRINGS FL	128.4	LIC	BLCT	-19970926KE
59	WJEB-TV	JACKSONVILLE FL	179.1	LIC	BLET	-19910604KE
59	WTOG	ST PETERSBURG FL	102.1	CP	BPCDT	-19991027ABV
59	WTOG-DT	ST. PETERSBURG FL	104.1	PLN	DTVPLN	-DTVP1570
60	960920YT	SEBRING FL	136.0	APP	BPCT	-19960920YT
47	WYKE-CA	Inglis-yankeetown FL	72.2		CUR	-PROPOSED

Proposal causes no interference

#####

Analysis of Interference to Affected Station 13

DTV Baseline Analysis

Channel	Call	City/State	Application	Ref. No.
46	WLCB-DT	LEESBURG FL	DTVPLN	-DTVP1256

Stations Potentially Affecting This Station

Chan	Call	City/State	Dist(km)	Status	Application	Ref. No.
46	WHFT-DT	MIAMI FL	355.6	PLN	DTVPLN	-DTVP1257
46	WVAN-DT	SAVANNAH GA	365.6	PLN	DTVPLN	-DTVP1258
47	WBHS-DT	TAMPA FL	122.8	PLN	DTVPLN	-DTVP1290
45	WLCBTV	LEESBURG FL	0.0	PLN	DTVPLN	-NPLN0376
46	WTVK	NAPLES FL	271.2	PLN	DTVPLN	-NPLN0378
46	WPCT	PANAMA CITY BEACH FL	414.2	PLN	DTVPLN	-NPLN0379
47	WTEVTV	JACKSONVILLE FL	158.7	PLN	DTVPLN	-NPLN0381

Results for: 46A FL LEESBURG DTVPLN DTVP1256 PLN
 HAAT 138.0 m, ATV ERP 133.0 kW

	POPULATION	AREA (sq km)
within Noise Limited Contour	1427663	11554.6
not affected by terrain losses	1427663	11554.6
lost to NTSC IX	0	0.0
lost to additional IX by ATV	0	0.0
lost to ATV IX only	0	0.0
lost to all IX	0	0.0

NTSC Baseline Analysis

Channel	Call	City/State	Application	Ref. No.
45	WLCBTV	LEESBURG FL	DTVPLN	-NPLN0376

Stations Potentially Affecting This Station

Chan	Call	City/State	Dist(km)	Status	Application	Ref. No.
41	WRBW-DT	ORLANDO FL	74.8	PLN	DTVPLN	-DTV1094
44	WJEB-DT	JACKSONVILLE FL	158.7	PLN	DTVPLN	-DTV1194
45	WTVK-DT	NAPLES FL	271.2	PLN	DTVPLN	-DTV1227
46	WLCB-DT	LEESBURG FL	0.0	PLN	DTVPLN	-DTV1256
47	WBHS-DT	TAMPA FL	122.8	PLN	DTVPLN	-DTV1290
48	WIRB-DT	MELBOURNE FL	106.2	PLN	DTVPLN	-DTV1320
49	WNTD-DT	DAYTONA BEACH FL	54.7	PLN	DTVPLN	-DTV1345
59	WTOG-DT	ST. PETERSBURG FL	124.2	PLN	DTVPLN	-DTV1570
52	WTGLTV	COCOA FL	104.1	PLN	DTVPLN	-NPLN0278
38	WTTA	ST. PETERSBURG FL	122.8	PLN	DTVPLN	-NPLN0367
43	WBSF	MELBOURNE FL	104.1	PLN	DTVPLN	-NPLN0373
44	WTOG	ST. PETERSBURG FL	124.2	PLN	DTVPLN	-NPLN0375
45	WHFT	MIAMI FL	355.6	PLN	DTVPLN	-NPLN0377
53	WGFL	HIGH SPRINGS FL	115.5	PLN	DTVPLN	-NPLN0387
59	WJEBTV	JACKSONVILLE FL	158.7	PLN	DTVPLN	-NPLN0394

Results for: 45N FL LEESBURG DTVPLN NPLN0376 PLN
 POPULATION AREA (sq km)

within Noise Limited Contour	1424957	11550.6
not affected by terrain losses	1424957	11550.6
lost to NTSC IX	5933	650.4
lost to additional IX by ATV	0	0.0
lost to all IX	5933	650.4

Analysis of current record

Channel	Call	City/State	Application	Ref. No.
46	WLCB-DT	LEESBURG FL	BPEDT	-20000428ACP

Stations Potentially Affecting This Station

Chan	Call	City/State	Dist(km)	Status	Application	Ref. No.
45	WLCB-TV	LEESBURG FL	72.8	CP MOD	BMPET	-20000717AAM
45	WTVK	NAPLES FL	212.1	CP	BPCDT	-19991029AFN
46	WHFT-DT	MIAMI FL	302.0	CP	BPCDT	-19990706KG
46	WHFT-DT	MIAMI FL	302.0	PLN	DTVPLN	-DTV1257
46	WTVK	NAPLES FL	212.1	CP	BPCT	-19991123AGQ
46	WVAN-DT	SAVANNAH GA	399.0	PLN	DTVPLN	-DTV1258
46	WCTV	THOMASVILLE GA	360.4	APP	BPRM	-20000328AAL
46	WCTV-DT	THOMASVILLE GA	360.4	CP	BPCDT	-20001113ABJ

47	WTEV-TV	JACKSONVILLE FL	193.5	LIC	BLCT	-19881116KG
47	WBHS-DT	TAMPA FL	142.1	CP	BPCDT	-19980806KH
47	WBHS-DT	TAMPA FL	142.1	PLN	DTVPLN	-DTVP1290
47	WFTT-DT	TAMPA FL	142.1	APP	BMPCDT	-20020603ABD
47	WYKE-CA	Inglis-yankeetown FL	144.3		CUR	-PROPOSED

Proposal causes no interference

#####

Analysis of Interference to Affected Station 14

Analysis of current record

Channel	Call	City/State	Application	Ref. No.
46	WLCB-DT	LEESBURG FL	DTVPLN	-DTVP1256

Stations Potentially Affecting This Station

Chan	Call	City/State	Dist(km)	Status	Application	Ref. No.
45	WLCB-TV	LEESBURG FL	20.5	CP MOD	BMPET	-20000717AAM
46	WHFT-DT	MIAMI FL	355.6	CP	BPCDT	-19990706KG
46	WHFT-DT	MIAMI FL	355.6	PLN	DTVPLN	-DTVP1257
46	WTVK	NAPLES FL	230.6	CP	BPCT	-19991123AGQ
46	WPCT	PANAMA CITY BEACH FL	414.2	LIC	BLCT	-19950410KE
46	WVAN-DT	SAVANNAH GA	365.6	PLN	DTVPLN	-DTVP1258
46	WCTV	THOMASVILLE GA	290.1	APP	BPRM	-20000328AAL
46	WCTV-DT	THOMASVILLE GA	290.1	CP	BPCDT	-20001113ABJ
47	WTEV-TV	JACKSONVILLE FL	158.7	LIC	BLCT	-19881116KG
47	WBHS-DT	TAMPA FL	122.8	CP	BPCDT	-19980806KH
47	WBHS-DT	TAMPA FL	122.8	PLN	DTVPLN	-DTVP1290
47	WFTT-DT	TAMPA FL	122.8	APP	BMPCDT	-20020603ABD
47	WYKE-CA	Inglis-yankeetown FL	73.1		CUR	-PROPOSED

Proposal causes no interference

#####

Analysis of Interference to Affected Station 15

DTV Baseline Analysis

Channel	Call	City/State	Application	Ref. No.
47	WYHS-DT	HOLLYWOOD FL	DTVPLN	-DTVP1288

Stations Potentially Affecting This Station

Chan	Call	City/State	Dist(km)	Status	Application	Ref. No.
46	WHFT-DT	MIAMI FL	4.6	PLN	DTVPLN	-DTVP1257
47	WBHS-DT	TAMPA FL	291.4	PLN	DTVPLN	-DTVP1290
46	WTVK	NAPLES FL	150.5	PLN	DTVPLN	-NPLN0378

Results for: 47A FL HOLLYWOOD	DTVPLN	DTVP1288	PLN
HAAT 264.0 m, ATV ERP 97.4 kW			
	POPULATION	AREA (sq km)	
within Noise Limited Contour	3582763	13813.6	
not affected by terrain losses	3582763	13813.6	

lost to NTSC IX	0	0.0
lost to additional IX by ATV	0	0.0
lost to ATV IX only	0	0.0
lost to all IX	0	0.0

NTSC Baseline Analysis

Channel	Call	City/State	Application Ref. No.
69	WYHSTV	HOLLYWOOD FL	DTVPLN -NPLN0399

Stations Potentially Affecting This Station

Chan	Call	City/State	Dist(km)	Status	Application Ref. No.
61	WFGC	PALM BEACH FL	88.6	PLN	DTVPLN -NPLN0395
67	WHBI	LAKE WORTH FL	85.4	PLN	DTVPLN -NPLN0398

Results for: 69N FL HOLLYWOOD	DTVPLN	NPLN0399	PLN
	POPULATION	AREA (sq km)	
within Noise Limited Contour	3582763	13805.6	
not affected by terrain losses	3582763	13805.6	
lost to NTSC IX	0	0.0	
lost to additional IX by ATV	0	0.0	
lost to all IX	0	0.0	

Analysis of current record

Channel	Call	City/State	Application Ref. No.
47	WYHS-DT	HOLLYWOOD FL	DTVPLN -DTVP1288

Stations Potentially Affecting This Station

Chan	Call	City/State	Dist(km)	Status	Application Ref. No.
46	WHFT-DT	MIAMI FL	4.6	CP	BPCDT -19990706KG
46	WHFT-DT	MIAMI FL	4.6	PLN	DTVPLN -DTVP1257
46	WTVK	NAPLES FL	182.2	CP	BPCT -19991123AGQ
47	WBHS-DT	TAMPA FL	291.4	CP	BPCDT -19980806KH
47	WBHS-DT	TAMPA FL	291.4	PLN	DTVPLN -DTVP1290
47	WFTT-DT	TAMPA FL	291.4	APP	BMPCDT -20020603ABD
47	WYKE-CA	Inglis-yankeetown FL	396.5	CUR	-PROPOSED

Proposal causes no interference

#####

Analysis of Interference to Affected Station 16

Analysis of current record

Channel	Call	City/State	Application Ref. No.
47	WAMI-DT	HOLLYWOOD FL	BMPCDT -20011022AAN

Stations Potentially Affecting This Station

Chan	Call	City/State	Dist(km)	Status	Application Ref. No.
46	WHFT-DT	MIAMI FL	2.1	CP	BPCDT -19990706KG
46	WHFT-DT	MIAMI FL	2.1	PLN	DTVPLN -DTVP1257
46	WTVK	NAPLES FL	182.5	CP	BPCT -19991123AGQ
47	WBHS-DT	TAMPA FL	290.9	CP	BPCDT -19980806KH
47	WBHS-DT	TAMPA FL	290.9	PLN	DTVPLN -DTVP1290

47	WFTT-DT	TAMPA FL	290.9	APP	BMPCDT	-20020603ABD
47	WYKE-CA	Inglis-yankeetown FL	395.6		CUR	-PROPOSED

Proposal causes no interference

#####

Analysis of Interference to Affected Station 17

Analysis of current record

Channel	Call	City/State	Application Ref. No.
47	WAMI-DT	HOLLYWOOD FL	BPCDT -19981030KF

Stations Potentially Affecting This Station

Chan	Call	City/State	Dist(km)	Status	Application Ref. No.
46	WHFT-DT	MIAMI FL	4.5	CP	BPCDT -19990706KG
46	WHFT-DT	MIAMI FL	4.5	PLN	DTVPLN -DTVP1257
46	WTVK	NAPLES FL	182.1	CP	BPCT -19991123AGQ
47	WBHS-DT	TAMPA FL	291.3	CP	BPCDT -19980806KH
47	WBHS-DT	TAMPA FL	291.3	PLN	DTVPLN -DTVP1290
47	WFTT-DT	TAMPA FL	291.2	APP	BMPCDT -20020603ABD
47	WYKE-CA	Inglis-yankeetown FL	396.4		CUR -PROPOSED

Proposal causes no interference

#####

Analysis of Interference to Affected Station 18

Analysis of current record

Channel	Call	City/State	Application Ref. No.
47	WAMI-DT	HOLLYWOOD FL	BMPCDT -20011022AAN

Stations Potentially Affecting This Station

Chan	Call	City/State	Dist(km)	Status	Application Ref. No.
46	WHFT-DT	MIAMI FL	2.1	CP	BPCDT -19990706KG
46	WHFT-DT	MIAMI FL	2.1	PLN	DTVPLN -DTVP1257
46	WTVK	NAPLES FL	182.5	CP	BPCT -19991123AGQ
47	WBHS-DT	TAMPA FL	290.9	CP	BPCDT -19980806KH
47	WBHS-DT	TAMPA FL	290.9	PLN	DTVPLN -DTVP1290
47	WFTT-DT	TAMPA FL	290.9	APP	BMPCDT -20020603ABD
47	WYKE-CA	Inglis-yankeetown FL	395.6		CUR -PROPOSED

Proposal causes no interference

#####

Analysis of Interference to Affected Station 19

NTSC Baseline Analysis

Channel	Call	City/State	Application Ref. No.
47	WTEVTV	JACKSONVILLE FL	DTVPLN -NPLN0381

Stations Potentially Affecting This Station

Chan	Call	City/State	Dist(km)	Status	Application	Ref. No.
44	WJEB-DT	JACKSONVILLE FL	0.1	PLN	DTVPLN	-DTVP1194
46	WLCB-DT	LEESBURG FL	158.7	PLN	DTVPLN	-DTVP1256
47	WPCT-DT	PANAMA CITY BEACH FL	404.6	PLN	DTVPLN	-DTVP1289
47	WBHS-DT	TAMPA FL	278.9	PLN	DTVPLN	-DTVP1290
47	WTVM-DT	COLUMBUS GA	380.7	PLN	DTVPLN	-DTVP1291
48	WFXU-DT	LIVE OAK FL	141.7	PLN	DTVPLN	-DTVP1319
49	WNTD-DT	DAYTONA BEACH FL	110.3	PLN	DTVPLN	-DTVP1345
51	WOGX	OCALA FL	125.9	PLN	DTVPLN	-NPLN0386

Results for: 47N FL JACKSONVILLE DTVPLN NPLN0381 PLN

	POPULATION	AREA (sq km)
within Noise Limited Contour	1019124	18850.6
not affected by terrain losses	1019124	18850.6
lost to NTSC IX	0	0.0
lost to additional IX by ATV	650	4.0
lost to all IX	650	4.0

Analysis of current record

Channel	Call	City/State	Application	Ref. No.
47	WTEV-TV	JACKSONVILLE FL	BLCT	-19881116KG

Stations Potentially Affecting This Station

Chan	Call	City/State	Dist(km)	Status	Application	Ref. No.
44	WJEB-DT	JACKSONVILLE FL	0.6	CP	BPEDT	-20000428ACG
44	WJEB-DT	JACKSONVILLE FL	0.1	PLN	DTVPLN	-DTVP1194
44	WJEB-TV	JACKSONVILLE FL	0.1	APP	BPET	-20020523AAR
46	WLCB-DT	LEESBURG FL	193.5	CP	BPEDT	-20000428ACP
46	WLCB-DT	LEESBURG FL	158.7	PLN	DTVPLN	-DTVP1256
47	WPCT-DT	PANAMA CITY BEACH FL	404.6	PLN	DTVPLN	-DTVP1289
47	WBHS-DT	TAMPA FL	278.9	CP	BPCDT	-19980806KH
47	WBHS-DT	TAMPA FL	278.9	PLN	DTVPLN	-DTVP1290
47	WFTT-DT	TAMPA FL	278.9	APP	BMPCDT	-20020603ABD
47	WTVM-DT	COLUMBUS GA	380.7	PLN	DTVPLN	-DTVP1291
47	WCSC-TV	CHARLESTON SC	343.3	APP	BPRM	-20000731AAA
47	WCSC-DT	CHARLESTON SC	343.3	CP	BMPCDT	-20000501ADT
48	WFXU-DT	LIVE OAK FL	141.7	PLN	DTVPLN	-DTVP1319
49	WNTD-DT	DAYTONA BEACH FL	110.3	PLN	DTVPLN	-DTVP1345
51	WOGX	OCALA FL	125.9	LIC	BLCT	-19831107KI
61	960920WR	GAINESVILLE FL	120.7	APP	BPCT	-19960920WR
61	960920LI	GAINESVILLE FL	134.6	APP	BPCT	-19960920LI
47	WYKE-CA	Inglis-yankeetown FL	180.6		CUR	-PROPOSED

Proposal causes no interference

#####

Analysis of Interference to Affected Station 20

DTV Baseline Analysis

Channel	Call	City/State	Application	Ref. No.
47	WPCT-DT	PANAMA CITY BEACH FL	DTVPLN	-DTVP1289

Stations Potentially Affecting This Station

Chan	Call	City/State	Dist(km)	Status	Application	Ref. No.
47	WPMI-DT	MOBILE AL	185.8	PLN	DTVPLN	-DTVP1283
47	WTVM-DT	COLUMBUS GA	256.2	PLN	DTVPLN	-DTVP1291
48	WRJM-DT	TROY AL	202.6	PLN	DTVPLN	-DTVP1313
46	WPCT	PANAMA CITY BEACH FL	0.0	PLN	DTVPLN	-NPLN0379
47	WTEVTV	JACKSONVILLE FL	404.6	PLN	DTVPLN	-NPLN0381

Results for: 47A FL PANAMA CITY BEACH DTVPLN DTVP1289 PLN
 HAAT 59.0 m, ATV ERP 50.0 kW

	POPULATION	AREA (sq km)
within Noise Limited Contour	85588	1417.8
not affected by terrain losses	85588	1417.8
lost to NTSC IX	0	0.0
lost to additional IX by ATV	0	0.0
lost to ATV IX only	0	0.0
lost to all IX	0	0.0

NTSC Baseline Analysis

Channel	Call	City/State	Application	Ref. No.
46	WPCT	PANAMA CITY BEACH FL	DTVPLN	-NPLN0379

Stations Potentially Affecting This Station

Chan	Call	City/State	Dist(km)	Status	Application	Ref. No.
38	WFSG-DT	PANAMA CITY FL	24.8	PLN	DTVPLN	-DTVP0987
39	NEW	DOTHAN AL	134.2	PLN	DTVPLN	-NPLN0073
42	WJHG-DT	PANAMA CITY FL	44.7	PLN	DTVPLN	-DTVP1126
45	WJTC-DT	PENSACOLA FL	176.2	PLN	DTVPLN	-DTVP1228
46	WMCFL-DT	MONTGOMERY AL	249.9	PLN	DTVPLN	-DTVP1250
47	WPMI-DT	MOBILE AL	185.8	PLN	DTVPLN	-DTVP1283
47	WPCT-DT	PANAMA CITY BEACH FL	0.0	PLN	DTVPLN	-DTVP1289
49	WAWD-DT	FORT WALTON BEACH FL	73.4	PLN	DTVPLN	-DTVP1346
60	NEW	DOTHAN AL	128.9	PLN	DTVPLN	-NPLN0096
53	WPAN	FORT WALTON BEACH FL	119.1	PLN	DTVPLN	-NPLN0281

Results for: 46N FL PANAMA CITY BEACH DTVPLN NPLN0379 PLN
 POPULATION AREA (sq km)

within Noise Limited Contour	85588	1417.8
not affected by terrain losses	85588	1417.8
lost to NTSC IX	0	0.0
lost to additional IX by ATV	0	4.0
lost to all IX	0	4.0

Analysis of current record

Channel	Call	City/State	Application	Ref. No.
47	WPCT-DT	PANAMA CITY BEACH FL	DTVPLN	-DTVP1289

Stations Potentially Affecting This Station

Chan	Call	City/State	Dist(km)	Status	Application	Ref. No.
46	WPCT	PANAMA CITY BEACH FL	0.0	LIC	BLCT	-19950410KE
46	WCTV	THOMASVILLE GA	184.3	APP	BPRM	-20000328AAL
46	WCTV-DT	THOMASVILLE GA	184.3	CP	BPCDT	-20001113ABJ
47	WPMI	MOBILE AL	181.7	CP MOD	BMPCDT	-20010213ABQ

47	WPMI-DT	MOBILE AL	185.8	PLN	DTVPLN	-DTVP1283
47	WTEV-TV	JACKSONVILLE FL	404.6	LIC	BLCT	-19881116KG
47	WTVM-DT	COLUMBUS GA	256.2	PLN	DTVPLN	-DTVP1291
47	960724KS	HATTIESBURG MS	366.7	APP	BPET	-19960724KS
48	WRJM-TV	TROY AL	209.3	APP	BPCT	-20020606AAC
48	WRJM-DT	TROY AL	202.6	PLN	DTVPLN	-DTVP1313
48	WRJM-DT	TROY AL	209.3	CP	BPCDT	-19991101AKR
48	960405XK	DESTIN FL	56.1	APP	BPCT	-19960405XK
48	NEW	DESTIN FL	56.1	ADD	BPRM	-20000717AFP
48	WFXU-DT	LIVE OAK FL	181.7	CP	BPCDT	-19981028KF
47	WYKE-CA	Inglis-yankeetown FL	346.3		CUR	-PROPOSED

Proposal causes no interference

#####

Analysis of Interference to Affected Station 21

DTV Baseline Analysis

Channel	Call	City/State	Application	Ref. No.
47	WBHS-DT	TAMPA FL	DTVPLN	-DTVP1290

Stations Potentially Affecting This Station

Chan	Call	City/State	Dist(km)	Status	Application	Ref. No.
46	WLCB-DT	LEESBURG FL	122.8	PLN	DTVPLN	-DTVP1256
47	WYHS-DT	HOLLYWOOD FL	291.4	PLN	DTVPLN	-DTVP1288
48	WIRB-DT	MELBOURNE FL	115.2	PLN	DTVPLN	-DTVP1320
46	WTVK	NAPLES FL	169.7	PLN	DTVPLN	-NPLN0378
47	WTEVTV	JACKSONVILLE FL	278.9	PLN	DTVPLN	-NPLN0381

Results for: 47A FL TAMPA DTVPLN DTVP1290 PLN
 HAAT 445.0 m, ATV ERP 149.0 kW

	POPULATION	AREA (sq km)
within Noise Limited Contour	3052283	26088.9
not affected by terrain losses	3052283	26088.9
lost to NTSC IX	474	16.0
lost to additional IX by ATV	17785	727.9
lost to ATV IX only	17785	727.9
lost to all IX	18259	743.9

NTSC Baseline Analysis

Channel	Call	City/State	Application	Ref. No.
50	WBHSTV	TAMPA FL	DTVPLN	-NPLN0384

Stations Potentially Affecting This Station

Chan	Call	City/State	Dist(km)	Status	Application	Ref. No.
42	WFCT-DT	BRADENTON FL	48.2	PLN	DTVPLN	-DTVP1124
46	WLCB-DT	LEESBURG FL	122.8	PLN	DTVPLN	-DTVP1256
47	WBHS-DT	TAMPA FL	0.0	PLN	DTVPLN	-DTVP1290
48	WIRB-DT	MELBOURNE FL	115.2	PLN	DTVPLN	-DTVP1320
49	WNTD-DT	DAYTONA BEACH FL	177.2	PLN	DTVPLN	-DTVP1345
50	WTVX-DT	FORT PIERCE FL	201.3	PLN	DTVPLN	-DTVP1373
50	WTLH-DT	BAINBRIDGE GA	364.5	PLN	DTVPLN	-DTVP1374
51	WTGL-DT	COCOA FL	142.1	PLN	DTVPLN	-DTVP1403

52	WWSB-DT	SARASOTA FL	33.2	PLN	DTVPLN	-DTVP1433
53	WINK-DT	FORT MYERS FL	125.9	PLN	DTVPLN	-DTVP1455
54	WEDU-DT	TAMPA FL	1.4	PLN	DTVPLN	-DTVP1472
57	WTTA-DT	ST. PETERSBURG FL	0.0	PLN	DTVPLN	-DTVP1528
43	WBSF	MELBOURNE FL	142.1	PLN	DTVPLN	-NPLN0373
49	WRXYTV	TICE FL	126.2	PLN	DTVPLN	-NPLN0382
51	WOGX	OCALA FL	168.7	PLN	DTVPLN	-NPLN0386
65	WRBW	ORLANDO FL	142.3	PLN	DTVPLN	-NPLN0397

Results for: 50N FL TAMPA

	POPULATION	AREA (sq km)
within Noise Limited Contour	3052180	26104.8
not affected by terrain losses	3051231	26072.9
lost to NTSC IX	94484	2563.7
lost to additional IX by ATV	10633	256.0
lost to all IX	105117	2819.7

Analysis of current record

Channel	Call	City/State	Application	Ref. No.
47	WBHS-DT	TAMPA FL	BPCDT	-19980806KH

Stations Potentially Affecting This Station

Chan	Call	City/State	Dist(km)	Status	Application	Ref. No.
46	WLCB-DT	LEESBURG FL	142.1	CP	BPEDT	-20000428ACP
46	WLCB-DT	LEESBURG FL	122.8	PLN	DTVPLN	-DTVP1256
46	WTVK	NAPLES FL	126.2	CP	BPCT	-19991123AGQ
47	WYHS-DT	HOLLYWOOD FL	291.4	PLN	DTVPLN	-DTVP1288
47	WAMI-DT	HOLLYWOOD FL	290.9	APP	BMPCDT	-20011022AAN
47	WAMI-DT	HOLLYWOOD FL	291.3	CP	BPCDT	-19981030KF
47	WAMI-DT	HOLLYWOOD FL	290.9	APP	BMPCDT	-20011022AAN
47	WTEV-TV	JACKSONVILLE FL	278.9	LIC	BLCT	-19881116KG
48	WOPX-DT	MELBOURNE FL	115.2	CP	BPCDT	-19990507KH
48	WIRB-DT	MELBOURNE FL	115.2	PLN	DTVPLN	-DTVP1320
47	WYKE-CA	Inglis-yankeetown FL	118.4		CUR	-PROPOSED

Total scenarios = 2

Result key: 1
 Scenario 1 Affected station 21
 Before Analysis

Results for: 47A FL TAMPA

	POPULATION	AREA (sq km)
HAAT 443.0 m, ATV ERP 200.0 kW		
within Noise Limited Contour	3094770	27444.8
not affected by terrain losses	3094770	27444.8
lost to NTSC IX	306	16.0
lost to additional IX by ATV	32321	1163.9
lost to ATV IX only	32321	1163.9
lost to all IX	32627	1179.9

Potential Interfering Stations Included in above Scenario 1

47N FL JACKSONVILLE	BLCT	19881116KG	LIC
46A FL LEESBURG	BPEDT	20000428ACP	CP

48A FL MELBOURNE BPCDT 19990507KH CP

After Analysis

Results for: 47A FL TAMPA BPCDT 19980806KH CP
HAAT 443.0 m, ATV ERP 200.0 kW

	POPULATION	AREA (sq km)
within Noise Limited Contour	3094770	27444.8
not affected by terrain losses	3094770	27444.8
lost to NTSC IX	10884	280.0
lost to additional IX by ATV	32321	1163.9
lost to ATV IX only	32321	1163.9
lost to all IX	43205	1443.8

Potential Interferring Stations Included in above Scenario 1

47N FL JACKSONVILLE	BLCT	19881116KG	LIC
46A FL LEESBURG	BPEDT	20000428ACP	CP
48A FL MELBOURNE	BPCDT	19990507KH	CP
47N FL Inglis-yankeetown	CUR	PROPOSED	
*Percent Service lost without proposal:	-0.9	to BPCDT	19980806KH
*Percent Service lost with proposal:	-0.6	to BPCDT	19980806KH

Result key: 2
Scenario 2 Affected station 21
Before Analysis

Results for: 47A FL TAMPA BPCDT 19980806KH CP
HAAT 443.0 m, ATV ERP 200.0 kW

	POPULATION	AREA (sq km)
within Noise Limited Contour	3094770	27444.8
not affected by terrain losses	3094770	27444.8
lost to NTSC IX	306	16.0
lost to additional IX by ATV	21409	819.9
lost to ATV IX only	21409	819.9
lost to all IX	21715	835.9

Potential Interferring Stations Included in above Scenario 2

47N FL JACKSONVILLE	BLCT	19881116KG	LIC
46A FL LEESBURG	BPEDT	20000428ACP	CP
48A FL MELBOURNE	DTVPLN	DTVP1320	PLN

After Analysis

Results for: 47A FL TAMPA BPCDT 19980806KH CP
HAAT 443.0 m, ATV ERP 200.0 kW

	POPULATION	AREA (sq km)
within Noise Limited Contour	3094770	27444.8
not affected by terrain losses	3094770	27444.8
lost to NTSC IX	10884	280.0
lost to additional IX by ATV	21409	819.9
lost to ATV IX only	21409	819.9
lost to all IX	32293	1099.9

Potential Interferring Stations Included in above Scenario 2

47N FL JACKSONVILLE	BLCT	19881116KG	LIC
46A FL LEESBURG	BPEDT	20000428ACP	CP
48A FL MELBOURNE	DTVPLN	DTVP1320	PLN
47N FL Inglis-yankeetown	CUR	PROPOSED	
*Percent Service lost without proposal:		-1.3 to BPCDT	19980806KH
*Percent Service lost with proposal:		-0.9 to BPCDT	19980806KH

#####

Analysis of Interference to Affected Station 22

Analysis of current record

Channel	Call	City/State	Application	Ref. No.
47	WBHS-DT	TAMPA FL	DTVPLN	-DTVP1290

Stations Potentially Affecting This Station

Chan	Call	City/State	Dist(km)	Status	Application	Ref. No.
46	WLCB-DT	LEESBURG FL	142.1	CP	BPEDT	-20000428ACP
46	WLCB-DT	LEESBURG FL	122.8	PLN	DTVPLN	-DTVP1256
46	WTVK	NAPLES FL	126.2	CP	BPCT	-19991123AGQ
47	WYHS-DT	HOLLYWOOD FL	291.4	PLN	DTVPLN	-DTVP1288
47	WAMI-DT	HOLLYWOOD FL	290.9	APP	BMPCDT	-20011022AAN
47	WAMI-DT	HOLLYWOOD FL	291.3	CP	BPCDT	-19981030KF
47	WAMI-DT	HOLLYWOOD FL	290.9	APP	BMPCDT	-20011022AAN
47	WTEV-TV	JACKSONVILLE FL	278.9	LIC	BLCT	-19881116KG
48	WOPX-DT	MELBOURNE FL	115.2	CP	BPCDT	-19990507KH
48	WIRB-DT	MELBOURNE FL	115.2	PLN	DTVPLN	-DTVP1320
47	WYKE-CA	Inglis-yankeetown FL	118.4		CUR	-PROPOSED

Total scenarios = 2

Result key: 3
Scenario 1 Affected station 22
Before Analysis

Results for: 47A FL TAMPA DTVPLN DTVP1290 PLN

HAAT 445.0 m, ATV ERP 149.0 kW	
	POPULATION AREA (sq km)
within Noise Limited Contour	3052283 26088.9
not affected by terrain losses	3052283 26088.9
lost to NTSC IX	474 16.0
lost to additional IX by ATV	26616 1043.9
lost to ATV IX only	26616 1043.9
lost to all IX	27090 1059.9

Potential Interfering Stations Included in above Scenario 1

47N FL JACKSONVILLE	BLCT	19881116KG	LIC
46A FL LEESBURG	BPEDT	20000428ACP	CP
47A FL HOLLYWOOD	BPCDT	19981030KF	CP
48A FL MELBOURNE	BPCDT	19990507KH	CP

After Analysis

Results for: 47A FL TAMPA DTVPLN DTVP1290 PLN
 HAAT 445.0 m, ATV ERP 149.0 kW

	POPULATION	AREA (sq km)
within Noise Limited Contour	3052283	26088.9
not affected by terrain losses	3052283	26088.9
lost to NTSC IX	9938	228.0
lost to additional IX by ATV	26616	1043.9
lost to ATV IX only	26616	1043.9
lost to all IX	36554	1271.8

Potential Interferring Stations Included in above Scenario 1

47N FL JACKSONVILLE	BLCT	19881116KG	LIC
46A FL LEESBURG	BPEDT	20000428ACP	CP
47A FL HOLLYWOOD	BPCDT	19981030KF	CP
48A FL MELBOURNE	BPCDT	19990507KH	CP
47N FL Inglis-yankeetown	CUR	PROPOSED	
*Percent Service lost without proposal:	0.3	to DTVPLN	DTVP1290
*Percent Service lost with proposal:	0.6	to DTVPLN	DTVP1290

Result key: 4
 Scenario 2 Affected station 22
 Before Analysis

Results for: 47A FL TAMPA DTVPLN DTVP1290 PLN
 HAAT 445.0 m, ATV ERP 149.0 kW

	POPULATION	AREA (sq km)
within Noise Limited Contour	3052283	26088.9
not affected by terrain losses	3052283	26088.9
lost to NTSC IX	474	16.0
lost to additional IX by ATV	20620	851.9
lost to ATV IX only	20620	851.9
lost to all IX	21094	867.9

Potential Interferring Stations Included in above Scenario 2

47N FL JACKSONVILLE	BLCT	19881116KG	LIC
46A FL LEESBURG	BPEDT	20000428ACP	CP
47A FL HOLLYWOOD	BPCDT	19981030KF	CP
48A FL MELBOURNE	DTVPLN	DTVP1320	PLN

After Analysis

Results for: 47A FL TAMPA DTVPLN DTVP1290 PLN
 HAAT 445.0 m, ATV ERP 149.0 kW

	POPULATION	AREA (sq km)
within Noise Limited Contour	3052283	26088.9
not affected by terrain losses	3052283	26088.9
lost to NTSC IX	9938	228.0
lost to additional IX by ATV	20620	851.9
lost to ATV IX only	20620	851.9
lost to all IX	30558	1079.9

Potential Interfering Stations Included in above Scenario 2

47N FL JACKSONVILLE	BLCT	19881116KG	LIC
46A FL LEESBURG	BPEDT	20000428ACP	CP
47A FL HOLLYWOOD	BPCDT	19981030KF	CP
48A FL MELBOURNE	DTVPLN	DTVP1320	PLN
47N FL Inglis-yankeetown	CUR	PROPOSED	
*Percent Service lost without proposal:		0.1	to DTVPLN DTVP1290
*Percent Service lost with proposal:		0.4	to DTVPLN DTVP1290

#####

Analysis of Interference to Affected Station 23

Analysis of current record

Channel	Call	City/State	Application Ref. No.
47	WFTT-DT	TAMPA FL	BMPCDT -20020603ABD

Stations Potentially Affecting This Station

Chan	Call	City/State	Dist(km)	Status	Application Ref. No.
46	WLCB-DT	LEESBURG FL	142.1	CP	BPEDT -20000428ACP
46	WLCB-DT	LEESBURG FL	122.8	PLN	DTVPLN -DTVP1256
46	WTVK	NAPLES FL	126.2	CP	BPCT -19991123AGQ
47	WYHS-DT	HOLLYWOOD FL	291.4	PLN	DTVPLN -DTVP1288
47	WAMI-DT	HOLLYWOOD FL	290.9	APP	BMPCDT -20011022AAN
47	WAMI-DT	HOLLYWOOD FL	291.2	CP	BPCDT -19981030KF
47	WAMI-DT	HOLLYWOOD FL	290.9	APP	BMPCDT -20011022AAN
47	WTEV-TV	JACKSONVILLE FL	278.9	LIC	BLCT -19881116KG
48	WOPX-DT	MELBOURNE FL	115.2	CP	BPCDT -19990507KH
48	WIRB-DT	MELBOURNE FL	115.2	PLN	DTVPLN -DTVP1320
47	WYKE-CA	Inglis-yankeetown FL	118.4	CUR	-PROPOSED

Total scenarios = 2

Result key: 5
 Scenario 1 Affected station 23
 Before Analysis

Results for: 47A FL TAMPA BMPCDT 20020603ABD APP

HAAT 317.0 m, ATV ERP 1000.0 kW

	POPULATION	AREA (sq km)
within Noise Limited Contour	3024858	26292.5
not affected by terrain losses	3024760	26280.5
lost to NTSC IX	789	12.0
lost to additional IX by ATV	21319	356.0
lost to ATV IX only	22024	364.0
lost to all IX	22108	368.0

Potential Interfering Stations Included in above Scenario 1

47N FL JACKSONVILLE	BLCT	19881116KG	LIC
46A FL LEESBURG	BPEDT	20000428ACP	CP

48A FL MELBOURNE BPCDT 19990507KH CP

After Analysis

Results for: 47A FL TAMPA BMPCDT 20020603ABD APP
HAAT 317.0 m, ATV ERP 1000.0 kW

	POPULATION	AREA (sq km)
within Noise Limited Contour	3024858	26292.5
not affected by terrain losses	3024760	26280.5
lost to NTSC IX	13158	519.9
lost to additional IX by ATV	21319	356.0
lost to ATV IX only	22024	364.0
lost to all IX	34477	875.9

Potential Interferring Stations Included in above Scenario 1

47N FL JACKSONVILLE	BLCT	19881116KG	LIC
46A FL LEESBURG	BPEDT	20000428ACP	CP
48A FL MELBOURNE	BPCDT	19990507KH	CP
47N FL Inglis-yankeetown	CUR	PROPOSED	
*Percent Service lost without proposal:	1.0	to BMPCDT	20020603ABD
*Percent Service lost with proposal:	1.4	to BMPCDT	20020603ABD

Result key: 6
Scenario 2 Affected station 23
Before Analysis

Results for: 47A FL TAMPA BMPCDT 20020603ABD APP
HAAT 317.0 m, ATV ERP 1000.0 kW

	POPULATION	AREA (sq km)
within Noise Limited Contour	3024858	26292.5
not affected by terrain losses	3024760	26280.5
lost to NTSC IX	789	12.0
lost to additional IX by ATV	13893	260.0
lost to ATV IX only	14598	268.0
lost to all IX	14682	272.0

Potential Interferring Stations Included in above Scenario 2

47N FL JACKSONVILLE	BLCT	19881116KG	LIC
46A FL LEESBURG	BPEDT	20000428ACP	CP
48A FL MELBOURNE	DTVPLN	DTVP1320	PLN

After Analysis

Results for: 47A FL TAMPA BMPCDT 20020603ABD APP
HAAT 317.0 m, ATV ERP 1000.0 kW

	POPULATION	AREA (sq km)
within Noise Limited Contour	3024858	26292.5
not affected by terrain losses	3024760	26280.5
lost to NTSC IX	13158	519.9
lost to additional IX by ATV	13893	260.0
lost to ATV IX only	14598	268.0
lost to all IX	27051	779.9

Potential Interferring Stations Included in above Scenario 2

47N FL JACKSONVILLE	BLCT	19881116KG	LIC
46A FL LEESBURG	BPEDT	20000428ACP	CP
48A FL MELBOURNE	DTVPLN	DTVP1320	PLN
47N FL Inglis-yankeetown	CUR	PROPOSED	
*Percent Service lost without proposal:		0.8	to BMPCDT 20020603ABD
*Percent Service lost with proposal:		1.2	to BMPCDT 20020603ABD

#####

Analysis of Interference to Affected Station 24

DTV Baseline Analysis

Channel	Call	City/State	Application Ref. No.
48	WFXU-DT	LIVE OAK FL	DTVPLN -DTVP1319

Stations Potentially Affecting This Station

Chan	Call	City/State	Dist(km)	Status	Application Ref. No.
48	WRJM-DT	TROY AL	338.8	PLN	DTVPLN -DTVP1313
48	WIRB-DT	MELBOURNE FL	328.7	PLN	DTVPLN -DTVP1320
48	WNGM-DT	ATHENS GA	405.1	PLN	DTVPLN -DTVP1321
49	WNTD-DT	DAYTONA BEACH FL	202.8	PLN	DTVPLN -DTVP1345
47	WTEVTV	JACKSONVILLE FL	141.7	PLN	DTVPLN -NPLN0381
49	WTLH	BAINBRIDGE GA	114.8	PLN	DTVPLN -NPLN0383

Results for: 48A FL LIVE OAK DTVPLN DTVP1319 PLN

HAAT 137.0 m, ATV ERP 50.0 kW

	POPULATION	AREA (sq km)
within Noise Limited Contour	160500	8562.5
not affected by terrain losses	160500	8562.5
lost to NTSC IX	0	0.0
lost to additional IX by ATV	0	0.0
lost to ATV IX only	0	0.0
lost to all IX	0	0.0

NTSC Baseline Analysis

Channel	Call	City/State	Application Ref. No.
57	WFXU	LIVE OAK FL	DTVPLN -NPLN0392

Stations Potentially Affecting This Station

Chan	Call	City/State	Dist(km)	Status	Application Ref. No.
50	WTLH-DT	BAINBRIDGE GA	114.8	PLN	DTVPLN -DTVP1374
57	WSFA-DT	MONTGOMERY AL	338.8	PLN	DTVPLN -DTVP1526
57	WTTA-DT	ST. PETERSBURG FL	309.8	PLN	DTVPLN -DTVP1528
49	WTLH	BAINBRIDGE GA	114.8	PLN	DTVPLN -NPLN0383
59	WJEBTV	JACKSONVILLE FL	141.8	PLN	DTVPLN -NPLN0394

Results for: 57N FL LIVE OAK DTVPLN NPLN0392 PLN

	POPULATION	AREA (sq km)
within Noise Limited Contour	160500	8562.5
not affected by terrain losses	160500	8562.5
lost to NTSC IX	0	0.0

lost to additional IX by ATV	0	0.0
lost to all IX	0	0.0

Analysis of current record

Channel	Call	City/State	Application	Ref. No.
48	WFXU-DT	LIVE OAK FL	DTVPLN	-DTVP1319

Stations Potentially Affecting This Station

Chan	Call	City/State	Dist(km)	Status	Application	Ref. No.
47	WTEV-TV	JACKSONVILLE FL	141.7	LIC	BLCT	-19881116KG
48	WRJM-TV	TROY AL	325.8	APP	BPCT	-20020606AAC
48	WRJM-DT	TROY AL	338.8	PLN	DTVPLN	-DTVP1313
48	WRJM-DT	TROY AL	325.8	CP	BPCDT	-19991101AKR
48	960405XK	DESTIN FL	307.4	APP	BPCT	-19960405XK
48	NEW	DESTIN FL	307.4	ADD	BPRM	-20000717AFP
48	WOPX-DT	MELBOURNE FL	328.7	CP	BPCDT	-19990507KH
48	WIRB-DT	MELBOURNE FL	328.7	PLN	DTVPLN	-DTVP1320
48	WUVG-DT	ATHENS GA	382.8	CP MOD	BMPCDT	-20020118AAD
48	WNGM-DT	ATHENS GA	405.1	PLN	DTVPLN	-DTVP1321
49	WNTD-DT	DAYTONA BEACH FL	202.8	PLN	DTVPLN	-DTVP1345
49	WTLH	BAINBRIDGE GA	93.3	LIC	BLCT	-20011102ABB
47	WYKE-CA	Inglis-yankeetown FL	191.4		CUR	-PROPOSED

Proposed station is beyond the site to
nearest cell evaluation distance

#####

Analysis of Interference to Affected Station 25

DTV Baseline Analysis

Channel	Call	City/State	Application	Ref. No.
48	WIRB-DT	MELBOURNE FL	DTVPLN	-DTVP1320

Stations Potentially Affecting This Station

Chan	Call	City/State	Dist(km)	Status	Application	Ref. No.
47	WBHS-DT	TAMPA FL	115.2	PLN	DTVPLN	-DTVP1290
48	WFXU-DT	LIVE OAK FL	328.7	PLN	DTVPLN	-DTVP1319
49	WNTD-DT	DAYTONA BEACH FL	137.3	PLN	DTVPLN	-DTVP1345
49	WFGC-DT	PALM BEACH FL	173.5	PLN	DTVPLN	-DTVP1347
49	WRXYTV	TICE FL	159.7	PLN	DTVPLN	-NPLN0382

Results for: 48A FL MELBOURNE DTVPLN DTVP1320 PLN
HAAT 472.0 m, ATV ERP 171.0 kW

	POPULATION	AREA (sq km)
within Noise Limited Contour	2155470	27684.6
not affected by terrain losses	2155470	27684.6
lost to NTSC IX	0	0.0
lost to additional IX by ATV	34979	223.5
lost to ATV IX only	34979	223.5
lost to all IX	34979	223.5

NTSC Baseline Analysis

Channel	Call	City/State	Application Ref. No.
56	WIRB	MELBOURNE FL	DTVPLN -NPLN0390

Stations Potentially Affecting This Station

Chan	Call	City/State	Dist(km)	Status	Application Ref. No.
48	WIRB-DT	MELBOURNE FL	0.0	PLN	DTVPLN -DTVP1320
49	WNTO-DT	DAYTONA BEACH FL	137.3	PLN	DTVPLN -DTVP1345
52	WWSB-DT	SARASOTA FL	135.8	PLN	DTVPLN -DTVP1433
54	WEDU-DT	TAMPA FL	115.9	PLN	DTVPLN -DTVP1472
55	WPTV-DT	WEST PALM BEACH FL	190.0	PLN	DTVPLN -DTVP1492
57	WTTA-DT	ST. PETERSBURG FL	115.2	PLN	DTVPLN -DTVP1528
58	WCPX-DT	ORLANDO FL	56.6	PLN	DTVPLN -DTVP1547
59	WTOG-DT	ST. PETERSBURG FL	115.9	PLN	DTVPLN -DTVP1570
49	WRXYTV	TICE FL	159.7	PLN	DTVPLN -NPLN0382
55	WACX	LEESBURG FL	93.9	PLN	DTVPLN -NPLN0389

Results for: 56N FL MELBOURNE	DTVPLN	NPLN0390	PLN
	POPULATION	AREA (sq km)	
within Noise Limited Contour	2155470	27672.6	
not affected by terrain losses	2154672	27668.6	
lost to NTSC IX	252468	2849.1	
lost to additional IX by ATV	36234	259.4	
lost to all IX	288702	3108.4	

Analysis of current record

Channel	Call	City/State	Application Ref. No.
48	WOPX-DT	MELBOURNE FL	BPCDT -19990507KH

Stations Potentially Affecting This Station

Chan	Call	City/State	Dist(km)	Status	Application Ref. No.
47	WBHS-DT	TAMPA FL	115.2	CP	BPCDT -19980806KH
47	WBHS-DT	TAMPA FL	115.2	PLN	DTVPLN -DTVP1290
47	WFTT-DT	TAMPA FL	115.2	APP	BMPCDT -20020603ABD
48	WFXU-DT	LIVE OAK FL	398.4	CP	BPCDT -19981028KF
48	WFXU-DT	LIVE OAK FL	328.7	PLN	DTVPLN -DTVP1319
49	WNTO	DAYTONA FL	93.9	CP	BPCDT -19991029AER
49	WNTO-DT	DAYTONA BEACH FL	137.3	PLN	DTVPLN -DTVP1345
49	WFGC	PALM BEACH FL	190.2	CP	BPCDT -19991028ABC
49	WFGC-DT	PALM BEACH FL	173.5	PLN	DTVPLN -DTVP1347
49	WRXY-TV	TICE FL	159.7	APP	BPCT -20020520AAU
49	WRXY-TV	TICE FL	159.7	LIC	BLCT -19950208KE
47	WYKE-CA	Inglis-yankeetown FL	162.5	CUR	-PROPOSED

Proposal causes no interference

#####

Analysis of Interference to Affected Station 26

Analysis of current record

Channel	Call	City/State	Application Ref. No.
48	WIRB-DT	MELBOURNE FL	DTVPLN -DTVP1320

Stations Potentially Affecting This Station

Chan	Call	City/State	Dist(km)	Status	Application	Ref. No.
47	WBHS-DT	TAMPA FL	115.2	CP	BPCDT	-19980806KH
47	WBHS-DT	TAMPA FL	115.2	PLN	DTVPLN	-DTVP1290
47	WFTT-DT	TAMPA FL	115.2	APP	BMPCDT	-20020603ABD
48	WFXU-DT	LIVE OAK FL	398.4	CP	BPCDT	-19981028KF
48	WFXU-DT	LIVE OAK FL	328.7	PLN	DTVPLN	-DTVP1319
49	WNTD	DATYONA FL	93.9	CP	BPCDT	-19991029AER
49	WNTD-DT	DAYTONA BEACH FL	137.3	PLN	DTVPLN	-DTVP1345
49	WFGC	PALM BEACH FL	190.2	CP	BPCDT	-19991028ABC
49	WFGC-DT	PALM BEACH FL	173.5	PLN	DTVPLN	-DTVP1347
49	WRXY-TV	TICE FL	159.7	APP	BPCT	-20020520AAU
49	WRXY-TV	TICE FL	159.7	LIC	BLCT	-19950208KE
47	WYKE-CA	Inglis-yankeetown FL	162.5		CUR	-PROPOSED

Proposal causes no interference

#####

Analysis of Interference to Affected Station 27

Analysis of current record

Channel	Call	City/State	Application	Ref. No.
48	W48AY	OLDSMAR FL	BLTTL	-19950515IB

Stations Potentially Affecting This Station

Chan	Call	City/State	Dist(km)	Status	Application	Ref. No.
40	WWSB	SARASOTA FL	60.9	CP	BPCT	-19991012AAS
45	WLCB-TV	LEESBURG FL	108.3	CP MOD	BMPET	-20000717AAM
46	WLCB-DT	LEESBURG FL	125.5	PLN	DTVPLN	-DTVP1256
47	WBHS-DT	TAMPA FL	44.4	CP	BPCDT	-19980806KH
47	WBHS-DT	TAMPA FL	44.4	PLN	DTVPLN	-DTVP1290
47	WFTT-DT	TAMPA FL	44.4	APP	BMPCDT	-20020603ABD
48	WFXU-DT	LIVE OAK FL	320.1	CP	BPCDT	-19981028KF
48	WFXU-DT	LIVE OAK FL	281.4	PLN	DTVPLN	-DTVP1319
48	WOPX-DT	MELBOURNE FL	150.3	CP	BPCDT	-19990507KH
48	WIRB-DT	MELBOURNE FL	150.3	PLN	DTVPLN	-DTVP1320
49	WNTD	DATYONA FL	163.3	CP	BPCDT	-19991029AER
49	WNTD-DT	DAYTONA BEACH FL	179.0	PLN	DTVPLN	-DTVP1345
49	WRXY-TV	TICE FL	163.2	APP	BPCT	-20020520AAU
49	WRXY-TV	TICE FL	163.2	LIC	BLCT	-19950208KE
50	WBHS-TV	TAMPA FL	44.4	CP	BPCT	-19960710KG
52	WWSB-DT	SARASOTA FL	60.9	CP	BPCDT	-19991014AAY
52	WWSB-DT	SARASOTA FL	60.6	PLN	DTVPLN	-DTVP1433
55	WACX	LEESBURG FL	163.3	LIC	BLCT	-19860319KE
62	WBSV-TV	VENICE FL	45.8	CP	BPCT	-19980706KI
63	960917KI	PALATKA FL	194.9	APP	BPCT	-19960917KI
63	960920IB	PALATKA FL	207.0	APP	BPCT	-19960920IB
47	WYKE-CA	Inglis-yankeetown FL	94.5		CUR	-PROPOSED

Proposal causes no interference

#####

Analysis of Interference to Affected Station 28

Analysis of current record

Channel	Call	City/State	Application	Ref. No.
48	WJGV-LP	PALATKA FL	BLTTL	-20010614ADP

Stations Potentially Affecting This Station

Chan	Call	City/State	Dist(km)	Status	Application	Ref. No.
40	WACX	LEESBURG FL	125.6	CP	BPCDT	-19991004ABN
40	WACX-DT	LEESBURG FL	82.0	PLN	DTVPLN	-DTVP1059
41	960724KW	LAKE CITY FL	91.2	APP	BPET	-19960724KW
41	WRBW-DT	ORLANDO FL	124.5	CP	BPCDT	-20000501ADF
41	WRBW-DT	ORLANDO FL	126.5	PLN	DTVPLN	-DTVP1094
44	WJEB-DT	JACKSONVILLE FL	78.9	CP	BPEDT	-20000428ACG
44	WJEB-DT	JACKSONVILLE FL	78.5	PLN	DTVPLN	-DTVP1194
45	WLCB-TV	LEESBURG FL	100.7	CP MOD	BMPET	-20000717AAM
46	WLCB-DT	LEESBURG FL	125.6	CP	BPEDT	-20000428ACP
46	WLCB-DT	LEESBURG FL	80.4	PLN	DTVPLN	-DTVP1256
47	WTEV-TV	JACKSONVILLE FL	78.4	LIC	BLCT	-19881116KG
47	WBHS-DT	TAMPA FL	200.8	CP	BPCDT	-19980806KH
47	WBHS-DT	TAMPA FL	200.8	PLN	DTVPLN	-DTVP1290
47	WFTT-DT	TAMPA FL	200.8	APP	BMPCDT	-20020603ABD
48	WFXU-DT	LIVE OAK FL	250.4	CP	BPCDT	-19981028KF
48	WFXU-DT	LIVE OAK FL	165.9	PLN	DTVPLN	-DTVP1319
48	WOPX-DT	MELBOURNE FL	174.4	CP	BPCDT	-19990507KH
48	WIRB-DT	MELBOURNE FL	174.4	PLN	DTVPLN	-DTVP1320
49	WNTD	DATYONA FL	82.0	CP	BPCDT	-19991029AER
49	WNTD-DT	DAYTONA BEACH FL	38.3	PLN	DTVPLN	-DTVP1345
51	WOGX	OCALA FL	65.9	LIC	BLCT	-19831107KI
52	WTGL-TV	COCOA FL	125.6	APP	BPCT	-20010808AAW
55	WACX	LEESBURG FL	82.0	LIC	BLCT	-19860319KE
62	WBSV-TV	VENICE FL	203.2	CP	BPCT	-19980706KI
63	960917KI	PALATKA FL	0.0	APP	BPCT	-19960917KI
63	960920IB	PALATKA FL	13.1	APP	BPCT	-19960920IB
47	WYKE-CA	Inglis-yankeetown FL	111.5		CUR	-PROPOSED

Proposal causes no interference

#####

Analysis of Interference to Affected Station 29

NTSC Baseline Analysis

Channel	Call	City/State	Application	Ref. No.
50	WBHSTV	TAMPA FL	DTVPLN	-NPLN0384

Stations Potentially Affecting This Station

Chan	Call	City/State	Dist(km)	Status	Application	Ref. No.
42	WFCT-DT	BRADENTON FL	48.2	PLN	DTVPLN	-DTVP1124
46	WLCB-DT	LEESBURG FL	122.8	PLN	DTVPLN	-DTVP1256
47	WBHS-DT	TAMPA FL	0.0	PLN	DTVPLN	-DTVP1290
48	WIRB-DT	MELBOURNE FL	115.2	PLN	DTVPLN	-DTVP1320
49	WNTD-DT	DAYTONA BEACH FL	177.2	PLN	DTVPLN	-DTVP1345
50	WTVX-DT	FORT PIERCE FL	201.3	PLN	DTVPLN	-DTVP1373

50	WTLH-DT	BAINBRIDGE GA	364.5	PLN	DTVPLN	-DTVP1374
51	WTGL-DT	COCOA FL	142.1	PLN	DTVPLN	-DTVP1403
52	WWSB-DT	SARASOTA FL	33.2	PLN	DTVPLN	-DTVP1433
53	WINK-DT	FORT MYERS FL	125.9	PLN	DTVPLN	-DTVP1455
54	WEDU-DT	TAMPA FL	1.4	PLN	DTVPLN	-DTVP1472
57	WTTA-DT	ST. PETERSBURG FL	0.0	PLN	DTVPLN	-DTVP1528
43	WBSF	MELBOURNE FL	142.1	PLN	DTVPLN	-NPLN0373
49	WRXYTV	TICE FL	126.2	PLN	DTVPLN	-NPLN0382
51	WOGX	OCALA FL	168.7	PLN	DTVPLN	-NPLN0386
65	WRBW	ORLANDO FL	142.3	PLN	DTVPLN	-NPLN0397

Results for: 50N FL TAMPA		DTVPLN	NPLN0384	PLN
	POPULATION	AREA (sq km)		
within Noise Limited Contour	3052180	26104.8		
not affected by terrain losses	3051231	26072.9		
lost to NTSC IX	94484	2563.7		
lost to additional IX by ATV	10633	256.0		
lost to all IX	105117	2819.7		

Analysis of current record

Channel	Call	City/State	Application	Ref. No.
50	WBHS-TV	TAMPA FL	BPCT	-19960710KG

Stations Potentially Affecting This Station

Chan	Call	City/State	Dist(km)	Status	Application	Ref. No.
42	WXPX	BRADENTON FL	2.5	APP	BPCT	-20020215AAZ
42	WFCT-DT	BRADENTON FL	48.2	PLN	DTVPLN	-DTVP1124
42	WXPX	BRADENTON FL	2.5	APP	BPCT	-19980708KH
42	WXPX	BRADENTON FL	2.5	CP	BPCDT	-19990602KF
43	WBSF	MELBOURNE FL	142.1	LIC	BLCT	-19980422KG
46	WLCB-DT	LEESBURG FL	122.8	PLN	DTVPLN	-DTVP1256
47	WBHS-DT	TAMPA FL	0.0	CP	BPCDT	-19980806KH
47	WBHS-DT	TAMPA FL	0.0	PLN	DTVPLN	-DTVP1290
47	WFTT-DT	TAMPA FL	0.0	APP	BMPCDT	-20020603ABD
48	WOPX-DT	MELBOURNE FL	115.2	CP	BPCDT	-19990507KH
48	WIRB-DT	MELBOURNE FL	115.2	PLN	DTVPLN	-DTVP1320
49	WNTD	DATYONA FL	151.3	CP	BPCDT	-19991029AER
49	WNTD-DT	DAYTONA BEACH FL	177.2	PLN	DTVPLN	-DTVP1345
49	WRXY-TV	TICE FL	126.2	APP	BPCT	-20020520AAU
49	WRXY-TV	TICE FL	126.2	LIC	BLCT	-19950208KE
50	WTVX	FORT PIERCE FL	201.4	CP	BPCDT	-19991027ABY
50	WTVX-DT	FORT PIERCE FL	201.3	PLN	DTVPLN	-DTVP1373
50	WTLH-DT	BAINBRIDGE GA	356.4	CP	BPCDT	-19980928KH
50	WTLH-DT	BAINBRIDGE GA	364.5	PLN	DTVPLN	-DTVP1374
51	WTGL-DT	COCOA FL	142.1	PLN	DTVPLN	-DTVP1403
51	WOGX	OCALA FL	168.7	LIC	BLCT	-19831107KI
52	WWSB-DT	SARASOTA FL	33.3	CP	BPCDT	-19991014AAY
52	WWSB-DT	SARASOTA FL	33.2	PLN	DTVPLN	-DTVP1433
53	WINK-DT	FORT MYERS FL	125.9	PLN	DTVPLN	-DTVP1455
54	WEDU-DT	TAMPA FL	1.4	PLN	DTVPLN	-DTVP1472
57	WTTA-DT	ST. PETERSBURG FL	0.0	CP	BPCDT	-19991007AAX
57	WTTA-DT	ST. PETERSBURG FL	0.0	PLN	DTVPLN	-DTVP1528
64	960711LK	INVERNESS FL	102.9	APP	BPCT	-19960711LK
65	WRBW	ORLANDO FL	145.5	CP	BPCT	-20000501ABK
47	WYKE-CA	Inglis-yankeetown FL	118.4	CUR		-PROPOSED

Proposal causes no interference

#####

Analysis of Interference to Affected Station 30

Analysis of current record

Channel	Call	City/State	Application	Ref. No.
50	WBHS-TV	TAMPA FL	BLCT	-19880616KH

Stations Potentially Affecting This Station

Chan	Call	City/State	Dist(km)	Status	Application	Ref. No.
42	WXPX	BRADENTON FL	2.5	APP	BPCT	-20020215AAZ
42	WFCT-DT	BRADENTON FL	48.2	PLN	DTVPLN	-DTVP1124
42	WXPX	BRADENTON FL	2.5	APP	BPCT	-19980708KH
42	WXPX	BRADENTON FL	2.5	CP	BPCDT	-19990602KF
43	WBSF	MELBOURNE FL	142.1	LIC	BLCT	-19980422KG
46	WLCB-DT	LEESBURG FL	122.8	PLN	DTVPLN	-DTVP1256
47	WBHS-DT	TAMPA FL	0.0	CP	BPCDT	-19980806KH
47	WBHS-DT	TAMPA FL	0.0	PLN	DTVPLN	-DTVP1290
47	WFTT-DT	TAMPA FL	0.0	APP	BMPCDT	-20020603ABD
48	WOPX-DT	MELBOURNE FL	115.2	CP	BPCDT	-19990507KH
48	WIRB-DT	MELBOURNE FL	115.2	PLN	DTVPLN	-DTVP1320
49	WNTD	DATYONA FL	151.3	CP	BPCDT	-19991029AER
49	WNTD-DT	DAYTONA BEACH FL	177.2	PLN	DTVPLN	-DTVP1345
49	WRXY-TV	TICE FL	126.2	APP	BPCT	-20020520AAU
49	WRXY-TV	TICE FL	126.2	LIC	BLCT	-19950208KE
50	WTVX	FORT PIERCE FL	201.4	CP	BPCDT	-19991027ABY
50	WTVX-DT	FORT PIERCE FL	201.3	PLN	DTVPLN	-DTVP1373
50	WTLH-DT	BAINBRIDGE GA	356.4	CP	BPCDT	-19980928KH
50	WTLH-DT	BAINBRIDGE GA	364.5	PLN	DTVPLN	-DTVP1374
51	WTGL-DT	COCOA FL	142.1	PLN	DTVPLN	-DTVP1403
51	WOGX	OCALA FL	168.7	LIC	BLCT	-19831107KI
52	WWSB-DT	SARASOTA FL	33.3	CP	BPCDT	-19991014AAY
52	WWSB-DT	SARASOTA FL	33.2	PLN	DTVPLN	-DTVP1433
53	WINK-DT	FORT MYERS FL	125.9	PLN	DTVPLN	-DTVP1455
54	WEDU-DT	TAMPA FL	1.4	PLN	DTVPLN	-DTVP1472
57	WTTA-DT	ST. PETERSBURG FL	0.0	CP	BPCDT	-19991007AAX
57	WTTA-DT	ST. PETERSBURG FL	0.0	PLN	DTVPLN	-DTVP1528
64	960711LK	INVERNESS FL	102.9	APP	BPCT	-19960711LK
65	WRBW	ORLANDO FL	145.5	CP	BPCT	-20000501ABK
47	WYKE-CA	Inglis-yankeetown FL	118.4		CUR	-PROPOSED

Proposal causes no interference

#####

Analysis of Interference to Affected Station 31

NTSC Baseline Analysis

Channel	Call	City/State	Application	Ref. No.
55	WACX	LEESBURG FL	DTVPLN	-NPLN0389

Stations Potentially Affecting This Station

Chan	Call	City/State	Dist(km)	Status	Application	Ref. No.
48	WIRB-DT	MELBOURNE FL	93.9	PLN	DTVPLN	-DTVP1320
51	WTGL-DT	COCOA FL	78.9	PLN	DTVPLN	-DTVP1403
54	WEDU-DT	TAMPA FL	152.6	PLN	DTVPLN	-DTVP1472
55	WPTV-DT	WEST PALM BEACH FL	281.2	PLN	DTVPLN	-DTVP1492
58	WCPX-DT	ORLANDO FL	41.7	PLN	DTVPLN	-DTVP1547
52	WTGLTV	COCOA FL	78.9	PLN	DTVPLN	-NPLN0278
56	WIRB	MELBOURNE FL	93.9	PLN	DTVPLN	-NPLN0390

Results for: 55N FL LEESBURG DTVPLN NPLN0389 PLN

	POPULATION	AREA (sq km)
within Noise Limited Contour	2033163	24304.7
not affected by terrain losses	2033151	24300.7
lost to NTSC IX	68075	1662.6
lost to additional IX by ATV	721	20.1
lost to all IX	68796	1682.7

Analysis of current record

Channel	Call	City/State	Application	Ref. No.
55	WACX	LEESBURG FL	BLCT	-19860319KE

Stations Potentially Affecting This Station

Chan	Call	City/State	Dist(km)	Status	Application	Ref. No.
48	WOPX-DT	MELBOURNE FL	93.9	CP	BPCDT	-19990507KH
48	WIRB-DT	MELBOURNE FL	93.9	PLN	DTVPLN	-DTVP1320
51	WTGL-DT	COCOA FL	78.9	PLN	DTVPLN	-DTVP1403
52	WTGL-TV	COCOA FL	43.7	APP	BPCT	-20010808AAW
52	WTGL-TV	COCOA FL	78.9	LIC	BLCT	-19821006KG
53	WTGL-TV	COCOA FL	43.7	APP	BPRM	-20010511ABR
53	WTGL-DT	COCOA FL	43.7	APP	BPCDT	-20000428ABS
54	WEDU-DT	TAMPA FL	152.6	PLN	DTVPLN	-DTVP1472
55	WPTV-DT	WEST PALM BEACH FL	281.2	PLN	DTVPLN	-DTVP1492
55	WPTV	WEST PALM BEACH FL	281.2	CP MOD	BMPCDT	-20011025ABN
56	WOPX	MELBOURNE FL	93.9	LIC	BLCT	-19980327KF
58	WKMG-DT	ORLANDO FL	42.9	LIC	BLCDT	-20010515ABB
58	WCPX-DT	ORLANDO FL	41.7	PLN	DTVPLN	-DTVP1547
62	WBSV-TV	VENICE FL	153.2	CP	BPCT	-19980706KI
63	960917KI	PALATKA FL	82.0	APP	BPCT	-19960917KI
63	960920IB	PALATKA FL	85.4	APP	BPCT	-19960920IB
47	WYKE-CA	Inglis-yankeetown FL	117.4		CUR	-PROPOSED

Proposal causes no interference

#####

Analysis of Interference to Affected Station 32

Analysis of current record

Channel	Call	City/State	Application	Ref. No.
47	WYKE-CA	Inglis-yankeetown FL	CUR	-PROPOSED

Stations Potentially Affecting This Station

Chan	Call	City/State	Dist(km)	Status	Application	Ref. No.
------	------	------------	----------	--------	-------------	----------

39	960919LB	CRYSTAL RIVER FL	26.0	APP	BPEDT	-19960919LB
40	WACX-DT	LEESBURG FL	117.4	PLN	DTVPLN	-DTVP1059
40	WWSB	SARASOTA FL	148.2	CP	BPCT	-19991012AAS
44	WTOG	ST. PETERSBURG FL	119.7	LIC	BLCT	-19990415KI
45	WLCB-TV	LEESBURG FL	72.2	CP MOD	BMPET	-20000717AAM
46	WLCB-DT	LEESBURG FL	144.3	CP	BPEDT	-20000428ACP
46	WLCB-DT	LEESBURG FL	73.1	PLN	DTVPLN	-DTVP1256
47	WYHS-DT	HOLLYWOOD FL	396.5	PLN	DTVPLN	-DTVP1288
47	WAMI-DT	HOLLYWOOD FL	395.6	APP	BMPCDT	-20011022AAN
47	WAMI-DT	HOLLYWOOD FL	396.4	CP	BPCDT	-19981030KF
47	WAMI-DT	HOLLYWOOD FL	395.6	APP	BMPCDT	-20011022AAN
47	WTEV-TV	JACKSONVILLE FL	180.6	LIC	BLCT	-19881116KG
47	WPCT-DT	PANAMA CITY BEACH FL	346.3	PLN	DTVPLN	-DTVP1289
47	WBHS-DT	TAMPA FL	118.4	CP	BPCDT	-19980806KH
47	WBHS-DT	TAMPA FL	118.4	PLN	DTVPLN	-DTVP1290
47	WFTT-DT	TAMPA FL	118.4	APP	BMPCDT	-20020603ABD
48	WFXU-DT	LIVE OAK FL	191.4	PLN	DTVPLN	-DTVP1319
48	WOPX-DT	MELBOURNE FL	162.5	CP	BPCDT	-19990507KH
48	WIRB-DT	MELBOURNE FL	162.5	PLN	DTVPLN	-DTVP1320
49	WNTD	DATYONA FL	117.4	CP	BPCDT	-19991029AER
49	WNTD-DT	DAYTONA BEACH FL	109.8	PLN	DTVPLN	-DTVP1345
50	WBHS-TV	TAMPA FL	118.4	CP	BPCT	-19960710KG
51	WOGX	OCALA FL	56.2	LIC	BLCT	-19831107KI
54	WEDU-DT	TAMPA FL	119.6	PLN	DTVPLN	-DTVP1472
55	WACX	LEESBURG FL	117.4	LIC	BLCT	-19860319KE
61	960920WR	GAINESVILLE FL	83.2	APP	BPCT	-19960920WR
61	960920LI	GAINESVILLE FL	126.1	APP	BPCT	-19960920LI
62	WBSV-TV	VENICE FL	120.9	CP	BPCT	-19980706KI

Total scenarios = 2

Result key: 7
 Scenario 1 Affected station 32
 Before Analysis

Results for: 47N FL Inglis-yankeetown	CUR	PROPOSED
	POPULATION	AREA (sq km)
within Noise Limited Contour	52504	782.7
not affected by terrain losses	52504	782.7
lost to NTSC IX	0	0.0
lost to additional IX by ATV	1091	12.0
lost to all IX	1091	12.0

Potential Interferring Stations Included in above Scenario 1

47A FL TAMPA	BPCDT	19980806KH	CP	
*Percent new DTV interference without proposal:		0.0	CUR	PROPOSED
*Percent new DTV interference with proposal:		0.0	CUR	PROPOSED

Result key: 8
 Scenario 2 Affected station 32
 Before Analysis

Results for: 47N FL Inglis-yankeetown	CUR	PROPOSED
	POPULATION	AREA (sq km)

within Noise Limited Contour	52504	782.7
not affected by terrain losses	52504	782.7
lost to NTSC IX	0	0.0
lost to additional IX by ATV	2079	36.1
lost to all IX	2079	36.1

Potential Interferring Stations Included in above Scenario 2

47A FL TAMPA	BMPCDT	20020603ABD	APP		
*Percent new DTV interference without proposal:		0.0	CUR		PROPOSED
*Percent new DTV interference with proposal:		0.0	CUR		PROPOSED

#####

FINISHED FINISHED FINISHED FINISHED FINISHED FINISHED

PART 22--PUBLIC MOBILE SERVICES--Table of Contents

Subpart E--Paging and Radiotelephone Service

Sec. 22.625 Transmitter locations.

This section governs where point-to-multipoint transmitters on the channels listed in Sec. 22.621 may be located.

(a) 928-960 MHz. In this frequency range, the required minimum distance separation between co-channel fixed transmitters is 113 kilometers (70 miles). However, this requirement may be waived if the applicant submits an engineering analysis that shows that no interference would be caused to either system. In such a case, a developmental authorization may be issued (see Sec. 22.415). If no interference is experienced during the term of the developmental authorization, the licensee may apply for a regular authorization.

(b) 470-512 MHz. The purpose of the rule in paragraph (b)(1) of this section is to define the areas in which the 470-512 MHz channels are allocated for public mobile use. The purpose of the rules in paragraphs (b)(2) and (b)(3) of this section is to reduce the likelihood that interference to television reception from public mobile operations on these channels will occur.

(1) Control transmitter locations. Control transmitter locations must be within 80 kilometers (50 miles) of the designated locations in this paragraph.

Urban area	N. latitude	W. longitude
Boston, MA.....	42°21'24.4"	71°03'22.2"
Chicago, IL.....	41°52'28.1"	87°38'22.2"
Cleveland, OH.....	41°29'51.2"	81°41'49.5"
Dallas, TX.....	32°47'09.5"	96°47'38.0"
Detroit, MI.....	42°19'48.1"	83°02'56.7"
Houston, TX.....	29°45'26.8"	95°21'37.8"
Los Angeles, CA.....	34°03'15.0"	18°14'31.3"
Miami, FL.....	25°46'38.6"	80°11'31.2"
New York, NY.....	40°45'06.4"	73°59'37.5"
Philadelphia, PA.....	39°56'58.4"	75°09'19.6"

Urban area	N. latitude	W. longitude
Pittsburg, PA.....	40°26'19.2"	79°59'59.2"
San Francisco-Oakland, CA.....	37°46'38.7"	122°24'43.9"
Washington, DC.....	38°53'51.4"	77°00'31.9"

NOTE: Coordinates are referenced to North American Datum 1983 (NAD 83).

KESSLER & GEHMAN
 TELECOMMUNICATIONS CONSULTING ENGINEERS
 507 N.W. 60th Street, Suite C
 Gainesville, Florida 32607

WYKE-CA CHANNEL 47+

INGLIS-YANKEETOWN, FL

20020802

EXHIBIT 14