

EXHIBIT 13 - 74.1204 OVERLAP SHOWING

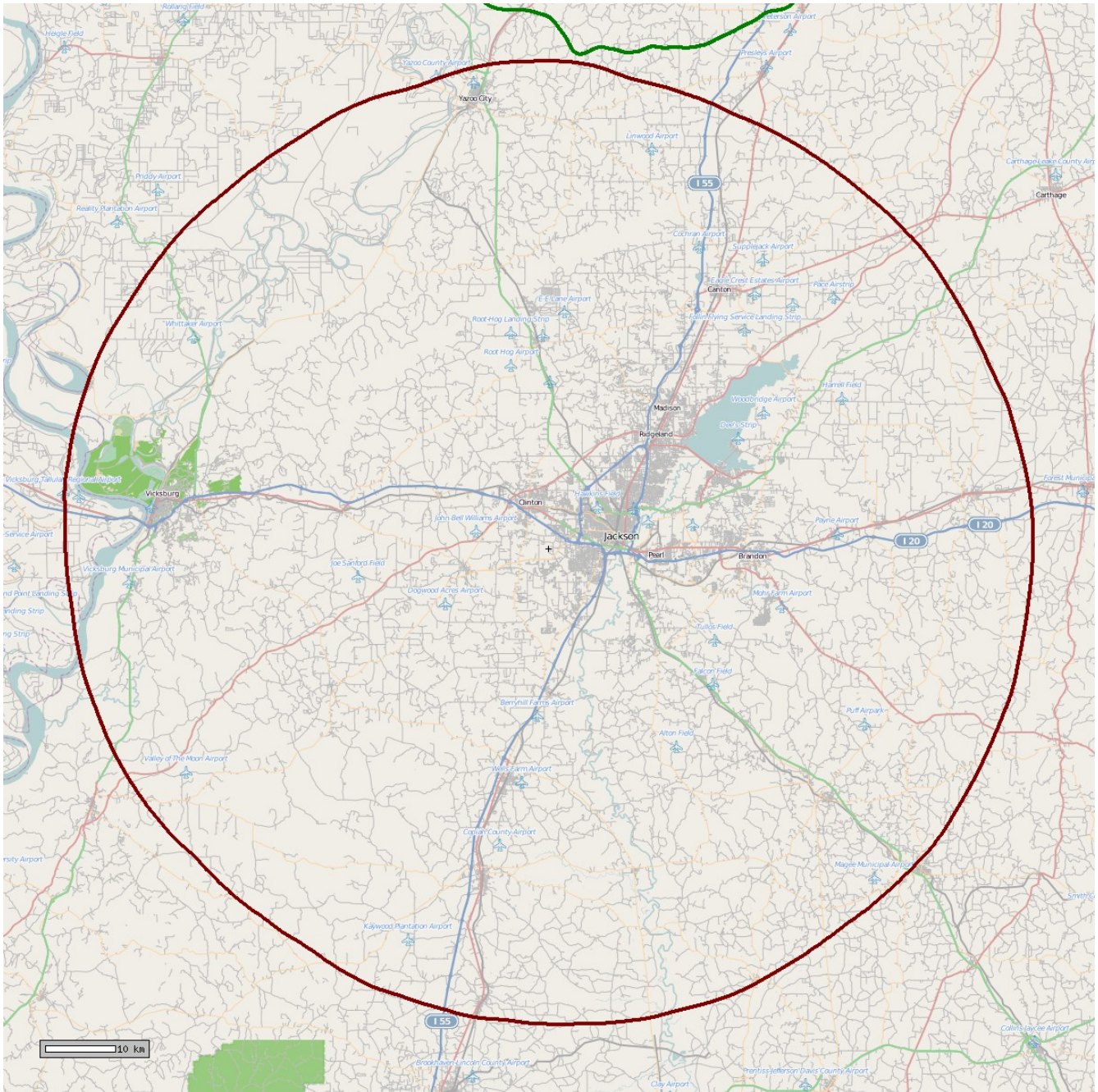


Figure 1: The map above depicts the F(50,50) 60 dBu contour of station WAGR-FM at Lexington, Mississippi (Facility ID 21155, green contour) and the F(50,10) 40 dBu contour of the proposed W294AT fill-in translator (red contour). As shown above, no prohibited overlap is predicted between the two facilities.

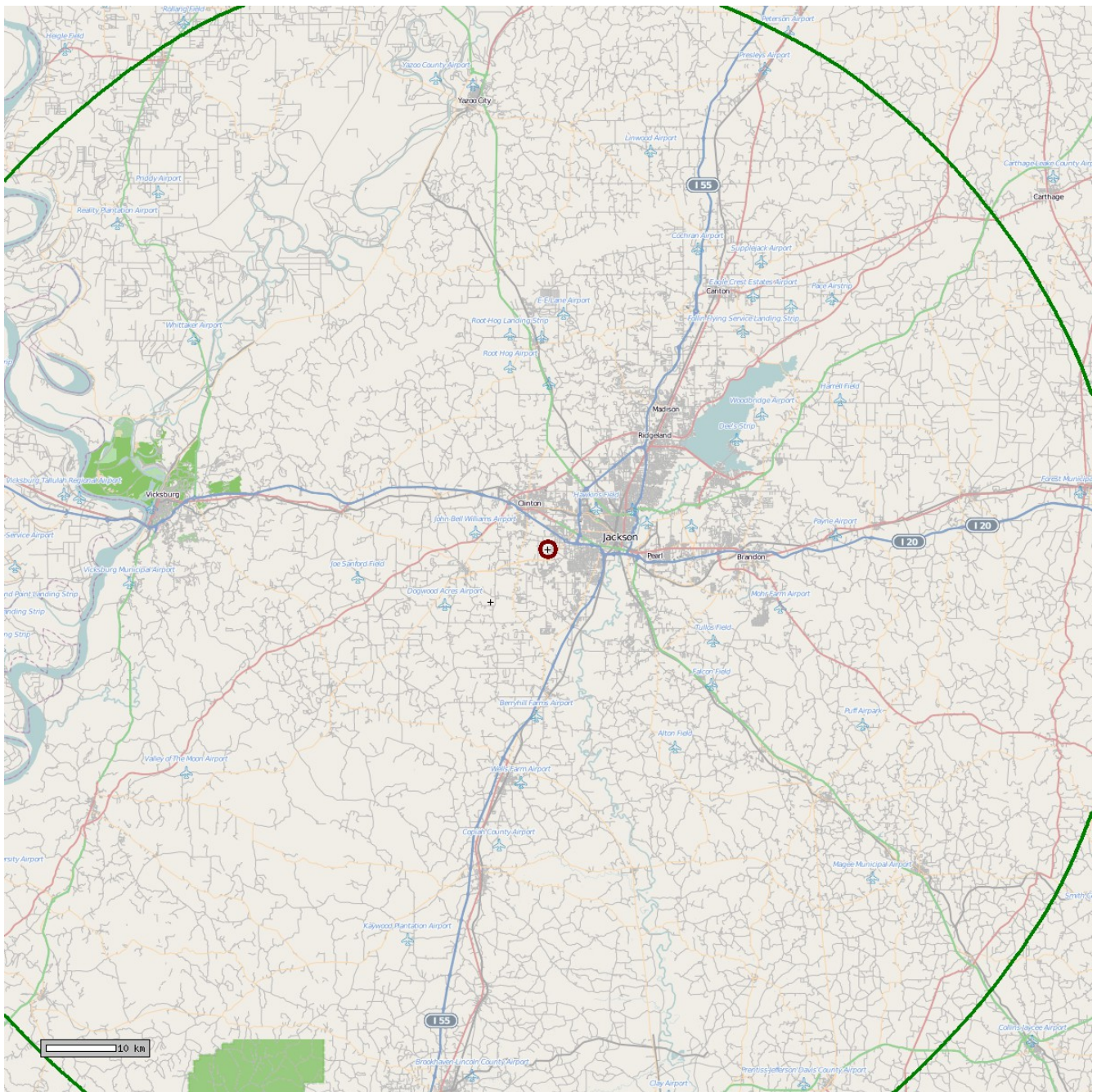


Figure 2: The map above depicts the F(50,50) 60 dBu contour of station WMSI-FM at Jackson, Mississippi (Facility ID 59822, green contour) and the F(50,10) 100 dBu contour of the proposed W294AT fill-in translator (red contour). Although the interfering contour of the proposed W294AT facility falls within the protected contour of WYAB, said predicted interference will not reach the ground level using the facilities described herein.