

EXHIBIT 12

Western Inspirational Broadcasters, Inc.

February, 2006

Application to make changes in

FM Translator

K203BJ

Chester, CA

(Application Reference Number: 20060131BCR)

Waiver Request of Section 74.1204,

And

Showing of Compliance

The proposed FM translator is located within the protected 60 dBu F(50,50) contour of second adjacent channel stations KTOR, Channel 259, facility ID #82891, and KWLJ, Channel 255, facility ID #54981 (see figure 1).

KTOR, Westwood, CA

The predicted F(50,50) field strength of KTOR at the proposed translator site is 121 dBu (free space equation). Using the Undesired-to-Desired method for calculating proposed interference, the proposed interfering contour with respect to KTOR is 161 dBu (121 + 40)(free space equation). The 161 dBu F(50,10) interfering contour would, in the worst case at the maximum radial, extend less than one meter from the transmitting antenna. Since the proposed transmitting antenna is located 4.6 meters above ground level, the area of interference would not reach the ground.

KWLJ, Chester, CA

The predicted F(50,50) field strength of KWLJ at the proposed translator site is 116 dBu (free space equation). Using the Undesired-to-Desired method for calculating proposed interference, the proposed interfering contour with respect to KWLJ is 156 dBu (116 + 40)(free space equation). The 156 dBu F(50,10) interfering contour would, in the worst case at the maximum radial, extend one meter from the transmitting antenna. Since the proposed transmitting antenna is located 4.6 meters above ground level, the area of interference would not reach the ground.

To further support this waiver request, an interference area represented by a 0.5 km circle around the proposed translator site has been plotted on a section of the 7.5 min CanyonDam Topographical Map (see figure 2). As is evident from the map, this is a remote site located within a National forest, and no population inhabits the interference area.

Exhibit 12, Page 2

Since no population inhabits the interference area, Western Inspirational Broadcasters, Inc. respectfully requests a waiver of the FM translator contour overlap regulations with respect to second-adjacent channel stations KTOR and KWLJ.

Western Inspirational Broadcasters, Inc.
Carson City, NV

K203BJ @ 257

REFERENCE		CH# 257D - 99.3 MHz, Pwr= 0.055 kW, HAAT=0.0M, COR= 2284 M								DISPLAY DATES	
40 14 22 N. 121 01 54 W.		Average Protected F(50-50)= 4.8 km Ave. F(50-10) 40 dBu= 15.5 54 dBu= 6.9 80 dBu= 1.5 100 dBu= .5								DATA	02-24-06
										SEARCH	02-24-06
CH CITY	CALL	TYPE STATE	AZI. <--	DIST FILE #	LAT. LNG.	Pwr(kW) HAAT(M)	COR(M) INT(km)	PRO(km) LICENSEE	*IN* (Overlap in km)	*OUT*	
255C0 Chester	KWLJ	LIC NCX CA	123.8 303.8	1.22 BLED20051229ABF	40 14 00 121 01 11	12.000 793	2274 6.7	76.5 Educational Media Foundati	-22.21*	-75.58*	
259A Westwood	KTOR	LIC CX CA	123.2 303.2	0.06 BLH20030515AAX	40 14 21 121 01 52	0.090 849	2291 0.7	30.0 Sierra Radio, Inc.	-16.72*	-30.22*	
257D Susanville	K257EK	CP C CA	55.3 235.6	40.04 BMPFT20051212ADD	40 26 36 120 38 35	0.012 -69	1407 10.6	3.3 John Regh	22.26	4.63	
257B1 Grass Valley	KLVS	LIC CX CA	173.8 353.9	107.61 BMLED20051011AOQ	39 16 33 120 53 49	13.000 104	1160 100.4	40.0 Educational Media Foundati	-6.73	5.78	
257B1 Grass Valley	KLVS.C	CP NCX CA	177.0 357.1	110.46 BPED20010321ACN	39 14 45 120 57 56	1.000 295	1187 85.4	36.3 Educational Media Foundati	12.16	15.12	
257C2 Shasta Lake City	KNNN	LIC NC CA	290.6 109.6	134.40 BLH20010605AAC	40 39 15 122 31 12	1.600 753	996 129.2	54.4 Regent Licensee Of Redding	-15.76	9.21	
257D Verdi	K257CW	LIC DHN NV	128.0 308.7	118.92 BLFT19861014TO	39 34 38 119 56 19	0.021 630	2434 60.5	17.7 Americom Las Vegas Limited	39.01	34.86	
255D Portola	KWLUF1	LIC C CA	135.7 316.0	72.92 BLFTB20020326ABS	39 46 09 120 26 08	0.015 496	2218 0.3	14.0 Educational Media Foundati	51.21	58.58	

ERP and HAAT on direct-line with reference station.

***affixed to 'IN' or 'Out' values = site inside protected contour.

Figure 1

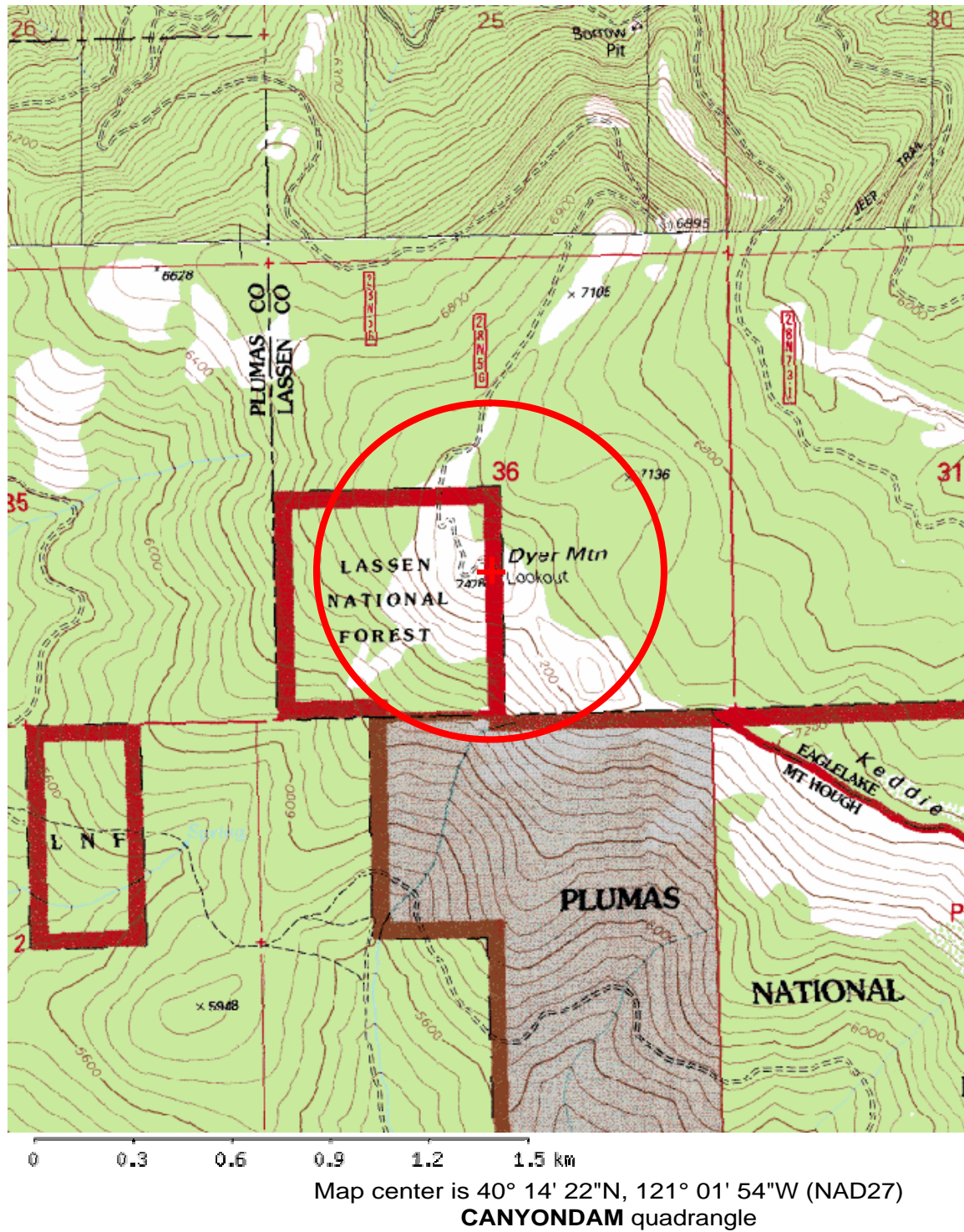


Figure 2

**Waiver Request of Section 74.1235(b)(2),
Seeking “grandfathering” of current power**

With this application, Western Inspirational Broadcasters, Inc. (WIBI) is seeking a waiver of the power limitations as set forth in CFR 74.1235(b)(2), and continued “grandfathering” to retain the currently authorized ERP.

In support of this request, WIBI submits the following:

1. There will be no change in the location, or center of radiation of the proposed translator.
2. Translator K203BJ’s “displacement” by KJCQ necessitates a frequency change.
3. A reduction in power to 10 watts ERP from its current transmitter site, as required by 74.1235(b)(2) would result in a significant reduction of the 1 mV/m service contour such that it would fall short of the city of license by a significant distance.
4. A reduction in power of the magnitude required under 74.1235(b)(2) would jeopardize the operation of FM translator K213BF, Quincy, CA, which receives its input over-the-air from K203BJ. In all likelihood, a reduction in power at K203BJ is likely to introduce significant noise in, or eliminate operation of, this downline translator.
5. An alternative site closer to the city of license is not available without sacrificing the elevation advantage which currently assures reliable, consistent reception of the over-the-air signal from the primary station.
6. A “white area waiver” request is not possible due to the proximity of other NCE signals in Immediate area.

The antenna pattern of the proposed translator has been modified so as to give contour protection to licensed co-channel signals in the area, i.e. K257EK, Susanville, CA; KLVS, Grass Valley, CA; and KNNN, Shasta Lake City, CA. This modified pattern will, however, continue to provide coverage over the service area quite similar to that currently provided (see figure 3).

For the above cited reasons, WIBI respectfully requests a waiver of the FM translator power limitations and continued “grandfathering” of the currently licensed ERP for FM Translator K203BJ.

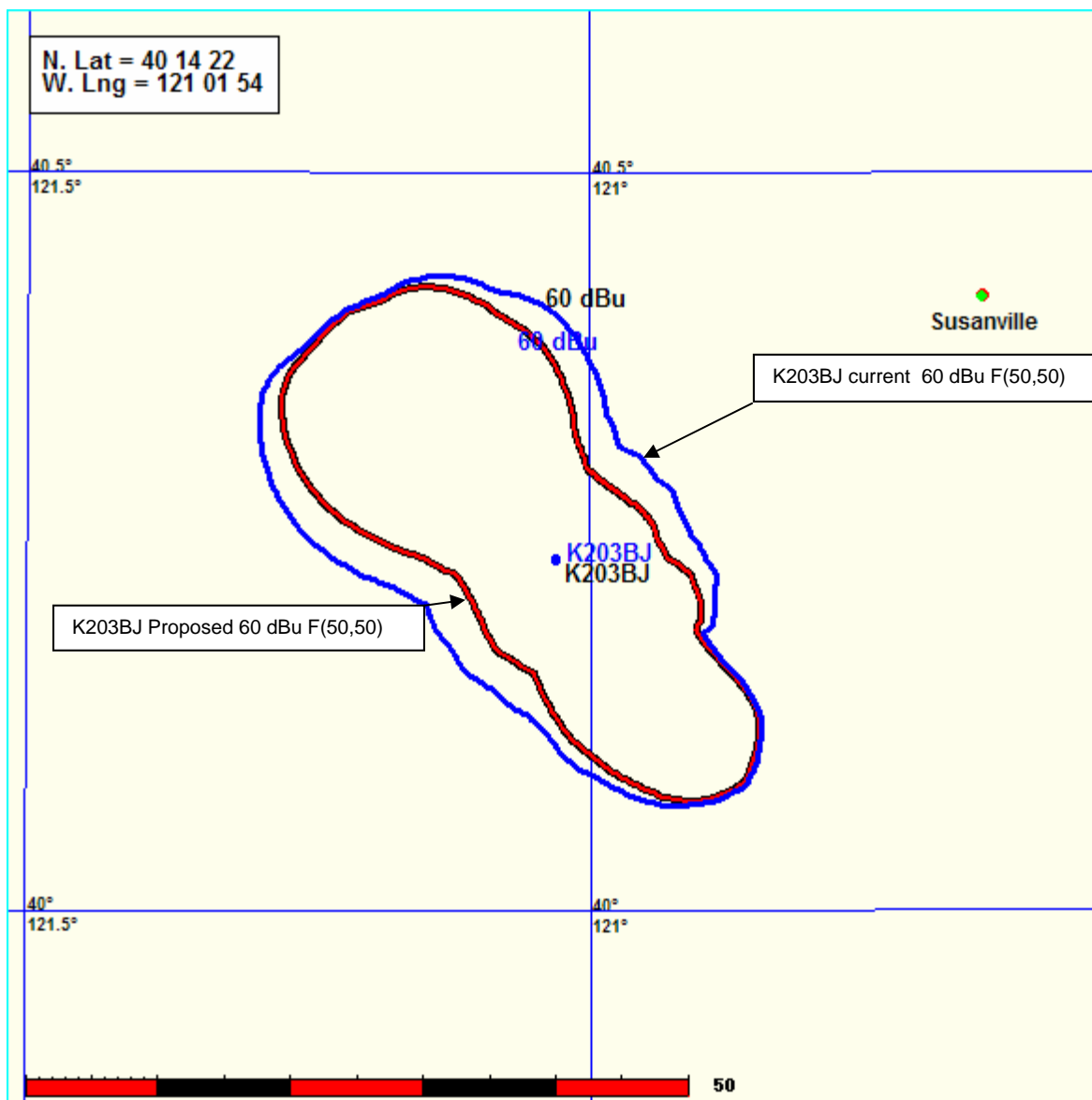


Figure 3

This document was created with Win2PDF available at <http://www.daneprairie.com>.
The unregistered version of Win2PDF is for evaluation or non-commercial use only.