

**ENVIRONMENTAL COMPLINACE**  
**KCMT 1.10 KW VERP 1342 M AMSL CH. 221**  
**ARIZONA LOTUS CORP.**  
**GREEN VALLEY, ARIZONA**

The emergency facility for KCMT (Facility ID No. 2746) is located at an established communications site on top of Tucson Mountain. As demonstrated in the aerial photo provided as Figure 1, this mountaintop site is isolated from any populated areas and the only road that provides access is gated. Figure 2 depicts that the gate is locked and a sign is posted to limit access to “authorized four wheel drive vehicles only.” It also shows that RF warning signage is posted at the point along the access road where exposure may exceed the general public limit. In addition to the site having restricted access, warning signs to establish awareness of the potential for general and occupational exposure are posted at appropriate intervals throughout the site. A few examples of the multiple RF warning signs that are posted at the site are included in Figure 3.

The transmitting antenna is side-mounted on an existing tower. The criteria outlined in Section 1.1307(a) for certain types of facilities that may significantly affect the environment do not apply in this case since the size of the existing tower was not substantially increased by the collocation of KCMT’s emergency antenna. Furthermore, the temporary facility complies with the rules regarding human exposure to radio-frequency (RF) energy as set forth in Section 1.1307(b). Specifically, the maximum ground-level exposure value of  $289 \mu\text{W}/\text{cm}^2$  calculated using the FM Model software, assuming a single element Type 1 FM radiator, does not exceed the maximum permissible limit set forth in Section 1.1310 for the controlled site.

All persons authorized to access the controlled site will be protected from excessive exposure to RF fields in accordance with the methods recommended in OET-65. Any work to be performed at the site will be coordinated. Preventative steps to avoid exposure in excess of the guideline shall include reducing power or shutting down the facility.





feet |—————| 900  
meters |—————| 200

FIGURE 1  
AERIAL PHOTO OF THE TUCSON  
MOUNTAIN COMMUNICATIONS SITE





FIGURE 2  
PHOTO SHOWING ACCESS ROAD TO THE  
TUCSON MOUNTAIN COMMUNICATIONS SITE  
IS RESTRICTED



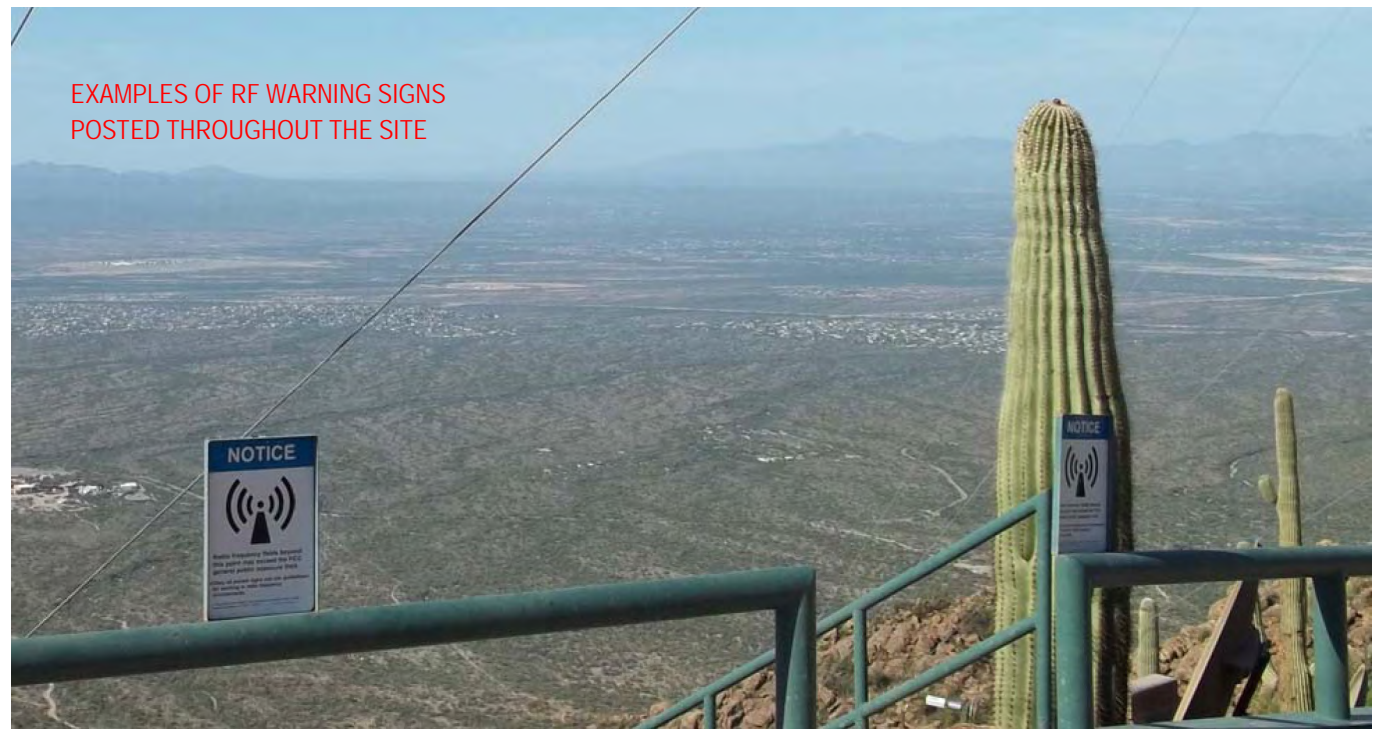


FIGURE 3  
PHOTOS OF THE TUCSON MOUNTAIN  
COMMUNICATIONS SITE SHOWING THAT  
RF WARNING SIGNS ARE POSTED