

Exhibit 11 To FCC 349

**Barry L. Hardin
2688 Majestic Oaks Court
Beavercreek, OH 45431**

**W268AX
Facility ID Number 147951
March 1, 2007**



Audio Division

FM Query Results

(202)-418-2700

FCC > MB > Audio Division > FM Query

AM Query

TV Query

FCC site map

FM Query results are derived from the public files at <http://www.fcc.gov/mb/databases/cdbs>. Requests to correct data should be referred to [Dale Bickel, dale.bickel@fcc.gov](mailto:dale.bickel@fcc.gov). Comments on the FM Query may be referred to [Dale Bickel, dale.bickel@fcc.gov](mailto:dale.bickel@fcc.gov).

- This list is best printed in LANDSCAPE mode.
- Use the TEXT SIZE input on the [FM Query](#) page to change the text size in the list below, for easier printing or viewing.
- Click on the blue Call Sign or blue Facility ID Number to retrieve more detailed information from the FM Query, including access to the CDBS database records pertaining to that station.
- Pending amendments to applications are listed following the initial application record.
- Records for stations outside the USA are derived from international notifications.
- The FCC does not collect information on the types of programming (jazz, talk, Top40, etc.) aired on radio broadcast stations, or about specific programs.
- License, application, and construction permit (CP) coordinates shown in the FM Query are NAD 27 coordinates.
- Antenna Structure Registration (ASR) coordinates are NAD 83.

Thu Mar 1 14:29:59 2007 Eastern time

Search Parameters

Search radius: 93.00 km
Center lat / lon: N 39 49 32.00 W 84 8 59.00
Lower Channel 264
Upper Channel 276

WEEC	264	B	FM	100.7	MHz	LIC	SPRINGFIELD	OH	US	BLH-19920806KC	-	73726	50.	kW	143.	m	457.	m	134.	m	N 39 57 42.00	W 83 52 5.00	-	28.44	km	17.67	mi	57.71°	WORLD EVANGELISTIC ENTERPRISE CORP.
WEEC	264	B	FA	100.7	MHz	USE	SPRINGFIELD	OH	US	---	-	73726	-	kW	-	m	-	m	-	m	N 39 57 44.00	W 83 51 49.00	-	28.79	km	17.89	mi	58.00°	-
W264BW	264	D	FX	100.7	MHz	CP MOD	NORWOOD	OH	US	BMPFT-20061229AAJ	-	139210	0.027	kW	0.	m	251.	m	41.	m	N 39 8 58.00	W 84 28 9.00	1001554	79.94	km	49.67	mi	200.14°	EDUCATIONAL MEDIA FOUNDATION
WIZF	265	A	FA	100.9	MHz	USE	ERLANGER	KY	US	---	-	5893	-	kW	-	m	-	m	-	m	N 39 6 18.00	W 84 33 24.00	-	87.33	km	54.26	mi	203.69°	-
-	266	A	FA	101.1	MHz	USE	ERLANGER	KY	US	RM-11113	05-17	-	-	kW	-	m	-	m	-	m	N 39 6 18.00	W 84 33 24.00	-	87.33	km	54.26	mi	203.69°	-
WIZF	266	A	FM	101.1	MHz	LIC	ERLANGER	KY	US	BLH-20060721AAQ	-	5893	2.5	kW	155.	m	379.	m	120.	m	N 39 6 18.00	W 84 33 25.00	1011742	87.34	km	54.27	mi	203.70°	BLUE CHIP BROADCASTING LICENSES, LTD.
WWCD	266	A	FA	101.1	MHz	USE	GROVE CITY	OH	US	---	84-231	28644	-	kW	-	m	-	m	-	m	N 39 49 40.00	W 83 4 20.00	-	92.25	km	57.32	mi	89.50°	-
NEW	266	D	FX	101.1	MHz	APP	HILLSBORO	OH	US	BNPFT-20030310BDR	-	139539	0.055	kW	0.	m	352.	m	17.	m	N 39 12 8.00	W 83 36 45.00	-	83.21	km	51.70	mi	146.21°	WORLD EVANGELISTIC ENTERPRISE CORPORAT
NEW	266	D	FX	101.1	MHz	APP	HILLSBORO	OH	US	BNPFT-20030314BQH	-	140101	0.25	kW	0.	m	387.	m	65.	m	N 39 12 56.00	W 83 37 37.00	1218749	81.29	km	50.51	mi	146.36°	CITICASTERS LICENSES, L.P.
W266BB	266	D	FX	101.1	MHz	CP	WEST CHESTER	OH	US	BNPFT-20030828BHN	-	148560	0.08	kW	0.	m	291.	m	53.	m	N 39 27 48.00	W 84 22 37.00	1012366	44.70	km	27.77	mi	205.85°	CITICASTERS LICENSES, L.P.
WFMG	267	B1	FA	101.3	MHz	USE	RICHMOND	IN	US	---	05-17	41845	-	kW	-	m	-	m	-	m	N 39 55 9.00	W 84 57 47.00	-	70.36	km	43.72	mi	278.79°	-
-	267	B1	FA	101.3	MHz	RSV	RICHMOND	IN	US	RM-11113	05-17	-	-	kW	-	m	-	m	-	m	N 39 55 9.00	W 84 57 47.00	-	70.36	km	43.72	mi	278.79°	-
WFMG	267	B1	FM	101.3	MHz	LIC	RICHMOND	IN	US	BLH-20060613ACE	-	41845	20.5	kW	83.	m	397.	m	95.	m	N 39 49 41.00	W 84 55 57.00	1031399	67.02	km	41.64	mi	270.49°	RODGERS BROADCASTING CORPORATION
WCWT-FM	268	D	FM	101.5	MHz	LIC	CENTERVILLE	OH	US	BLED-19880819KD	-	9780	0.009	kW	59.	m	334.	m	18.	m	N 39 37 38.00	W 84 8 54.00	-	22.02	km	13.68	mi	179.69°	CENTERVILLE CITY BOARD OF EDUCATION
W268AR	268	D	FX	101.5	MHz	CP	WILMINGTON	OH	US	BNPFT-20030807AHV	-	138927	0.013	kW	0.	m	410.	m	86.	m	N 39 30 6.00	W 83 50 33.00	1014846	44.59	km	27.71	mi	143.77°	EDUCATIONAL MEDIA FOUNDATION
WKSX	268	A	FM	101.5	MHz	APP	ENON	OH	US	BPH-20070119AGI	-	10113	6.	kW	71.	m	348.	m	74.	m	N 39 52 49.00	W 84 3 56.00	1012223	9.42	km	5.86	mi	49.71°	BLUE CHIP BROADCASTING LICENSES, LTD
W268AX	268	D	FX	101.5	MHz	LIC	HUBER HEIGHTS	OH	US	BLFT-20070119ADV	-	147951	0.106	kW	0.	m	307.	m	51.	m	N 39 49 32.30	W 84 8 59.20	1011072	0.01	km	0.01	mi	0.00°	BARRY L. HARDIN
WKSX	268	A	FA	101.5	MHz	RSV	ENON	OH	US	---	-	10113	-	kW	-	m	-	m	-	m	N 39 49 58.00	W 83 48 40.00	-	29.00	km	18.02	mi	88.30°	-
W269BP	269	D	FX	101.7	MHz	CP MOD	RICHMOND	IN	US	BMPFT-20050615ACC	-	148424	0.027	kW	0.	m	355.	m	52.	m	N 39 50 13.00	W 84 52 27.00	1205738	62.03	km	38.54	mi	271.40°	EDUCATIONAL MEDIA FOUNDATION
WKSX	269	A	FM	101.7	MHz	LIC	URBANA	OH	US	BLH-19950324KD	-	10113	3.2	kW	124.	m	453.	m	108.	m	N 40 2 57.00	W 83 46 6.00	-	40.98	km	25.46	mi	52.47°	BLUE CHIP BROADCASTING LICENSES, LTD
WKSX	269	A	FA	101.7	MHz	USE	URBANA	OH	US	---	-	10113	-	kW	-	m	-	m	-	m	N 40 6 12.00	W 83 42 52.00	-	48.32	km	30.02	mi	50.08°	-
W269BY	269	D	FX	101.7	MHz	CP	DUBLIN	OH	US	BNPFT-20030828BGV	-	142360	0.25	kW	0.	m	332.	m	55.	m	N 40 5 40.00	W 83 8 34.00	1065840	91.07	km	56.59	mi	70.47°	CITICASTERS LICENSES, L.P.
WKRQ	270	B	FA	101.9	MHz	USE	CINCINNATI	OH	US	---	-	11276	-	kW	-	m	-	m	-	m	N 39 6 58.00	W 84 30 5.00	-	84.38	km	52.43	mi	201.05°	-
WKRQ	270	B	FM	101.9	MHz	LIC	CINCINNATI	OH	US	BLH-19991004ABU	-	11276	16.	kW	264.	m	483.	m	247.	m	N 39 6 59.00	W 84 30 7.00	1019014	84.37	km	52.42	mi	201.09°	CBS RADIO STATIONS INC.
WKRQ	270	B	FS	101.9	MHz	LIC	CINCINNATI	OH	US	BXLH-20051118ABH	-	11276	16.	kW	190.3	m	413.3	m	176.8	m	N 39 6 59.00	W 84 30 7.00	1019014	84.37	km	52.42	mi	201.09°	CBS RADIO STATIONS INC.
WIMT	271	B	FA	102.1	MHz	USE	LIMA	OH	US	---	-	37497	-	kW	-	m	-	m	-	m	N 40 38 3.00	W 84 12 29.00	-	89.92	km	55.88	mi	356.87°	-
WIMT	271	B	FM	102.1	MHz	LIC	LIMA	OH	US	BMLH-20050707ADI	-	37497	11.	kW	323.	m	590.	m	327.	m	N 40 38 3.00	W 84 12 29.00	1012273	89.92	km	55.88	mi	356.87°	JACOR BROADCASTING CORPORATION
WKLN	272	A	FM	102.3	MHz	LIC	WILMINGTON	OH	US	BMLH-19880617KA	-	58372	3.	kW	91.	m	413.	m	79.	m	N 39 21 54.00	W 83 46 8.00	-	60.70	km	37.72	mi	147.37°	VERNON R. BALDWIN, INC.
WKLN	272	A	FA	102.3	MHz	USE	WILMINGTON	OH	US	---	-	58372	-	kW	-	m	-	m	-	m	N 39 21 54.00	W 83 46 8.00	-	60.70	km	37.72	mi	147.37°	-
W272BY	272	D	FX	102.3	MHz	CP MOD	CINCINNATI	OH	US	BMPFT-20060109ABF	-	144693	0.099	kW	0.	m	347.	m	60.	m	N 39 11 32.00	W 84 34 16.00	1230430	79.10	km	49.15	mi	207.31°	EDUCATIONAL MEDIA FOUNDATION
W272CD	272	D	FX	102.3	MHz	CP MOD	DAYTON	OH	US	BMPFT-20070216AAA	-	157110	0.012	kW	0.	m	336.	m	50.	m	N 39 45 46.00	W 84 5 11.00	1017628	8.83	km	5.49	mi	142.20°	SPIRIT COMMUNICATIONS, INC.
NEW	273	D	FX	102.5	MHz	APP	LAWRENCEVILLE	OH	US	BNPFT-20030317MVS	-	158589	0.01	kW	0.	m	446.	m	120.	m	N 39 57 42.00	W 83 52 5.00	1014018	28.44	km	17.67	mi	57.71°	NORTHWEST COMMUNITY RADIO PROJECT

WEBN	274	B	FM	102.7	MHz	LIC	CINCINNATI	OH	US	BLH-19981112KL	-	29734	16.	kW	264.	m	483.	m	247.	m	N	39	6	59.00	W	84	30	7.00	1019014	84.37	km	52.42	mi	201.09°	JACOR BROADCASTING CORPORATION	
WEBN	274	B	FA	102.7	MHz	USE	CINCINNATI	OH	US	---	-	29734	-	kW	-	m	-	m	-	m	N	39	7	31.00	W	84	29	57.00	-	83.36	km	51.80	mi	201.18°	-	
WEBN	274	B	FS	102.7	MHz	LIC	CINCINNATI	OH	US	BXLH-20060906AAK	-	29734	17.	kW	175.	m	395.	m	136.	m	N	39	6	18.00	W	84	33	25.00	1011742	87.34	km	54.27	mi	203.70°	JACOR BROADCASTING CORPORATION	
WDHT	275	B	FM	102.9	MHz	LIC	SPRINGFIELD	OH	US	BLH-19870511KC	-	60252	50.	kW	150.	m	460.	m	137.	m	N	39	57	11.00	W	83	52	7.00	-	27.90	km	17.34	mi	59.32°	BLUE CHIP BROADCASTING LICENSES, LTD	
WDHT	275	B	FA	102.9	MHz	USE	SPRINGFIELD	OH	US	---	-	60252	-	kW	-	m	-	m	-	m	N	39	57	11.00	W	83	52	7.00	-	27.90	km	17.34	mi	59.32°	-	
WDHT	275	B	FM	102.9	MHz	APP	URBANA	OH	US	BPH-20070119AGF	-	60252	50.	kW	150.	m	460.	m	137.	m	N	39	57	11.00	W	83	52	7.00	1051725	27.90	km	17.34	mi	59.32°	BLUE CHIP BROADCASTING LICENSES, LTD	
NEW	276	D	FX	103.1	MHz	APP	CINCINNATI	OH	US	BNPFT-20030317BDU	-	141511	0.028	kW	DA	0.	m	495.	m	222.	m	N	39	12	1.00	W	84	31	22.00	1014277	76.48	km	47.52	mi	204.83°	EDUCATIONAL MEDIA FOUNDATION
NEW	276	D	FX	103.1	MHz	APP	SHARONVILLE	OH	US	BNPFT-20030317AJZ	-	142489	0.013	kW		0.	m	302.	m	70.	m	N	39	17	38.00	W	84	26	6.00	1017793	63.92	km	39.72	mi	202.56°	THE PRESIDENT & TRUSTEES OF MIAMI UNIV

*** 40 FM Records within 93.00 km distance of 39° 49' 32.00" N, 84° 8' 59.00" W ***

Related Nonbroadcast Facilities: ULS Search

Using a broadcast station's facility ID number, you may search in the WTB's ULS database for nonbroadcast station records that are related to radio and TV broadcast stations, such as microwave facilities. Use the [ULS Radio Services List](#) to determine the nonbroadcast station's service. Not every AM, FM, or TV broadcast station will have related nonbroadcast operations.

Facility ID Number

Search ULS

Clear

Output will appear in a new browser window. [Alternate Form](#)

[Return to FM Query Data Entry screen](#)

Quick Links to Audio Division Information

Retrieve

FCC Home		Search		Updates		E-Filing		Initiatives		For Consumers		Find People
--------------------------	--	------------------------	--	-------------------------	--	--------------------------	--	-----------------------------	--	-------------------------------	--	-----------------------------

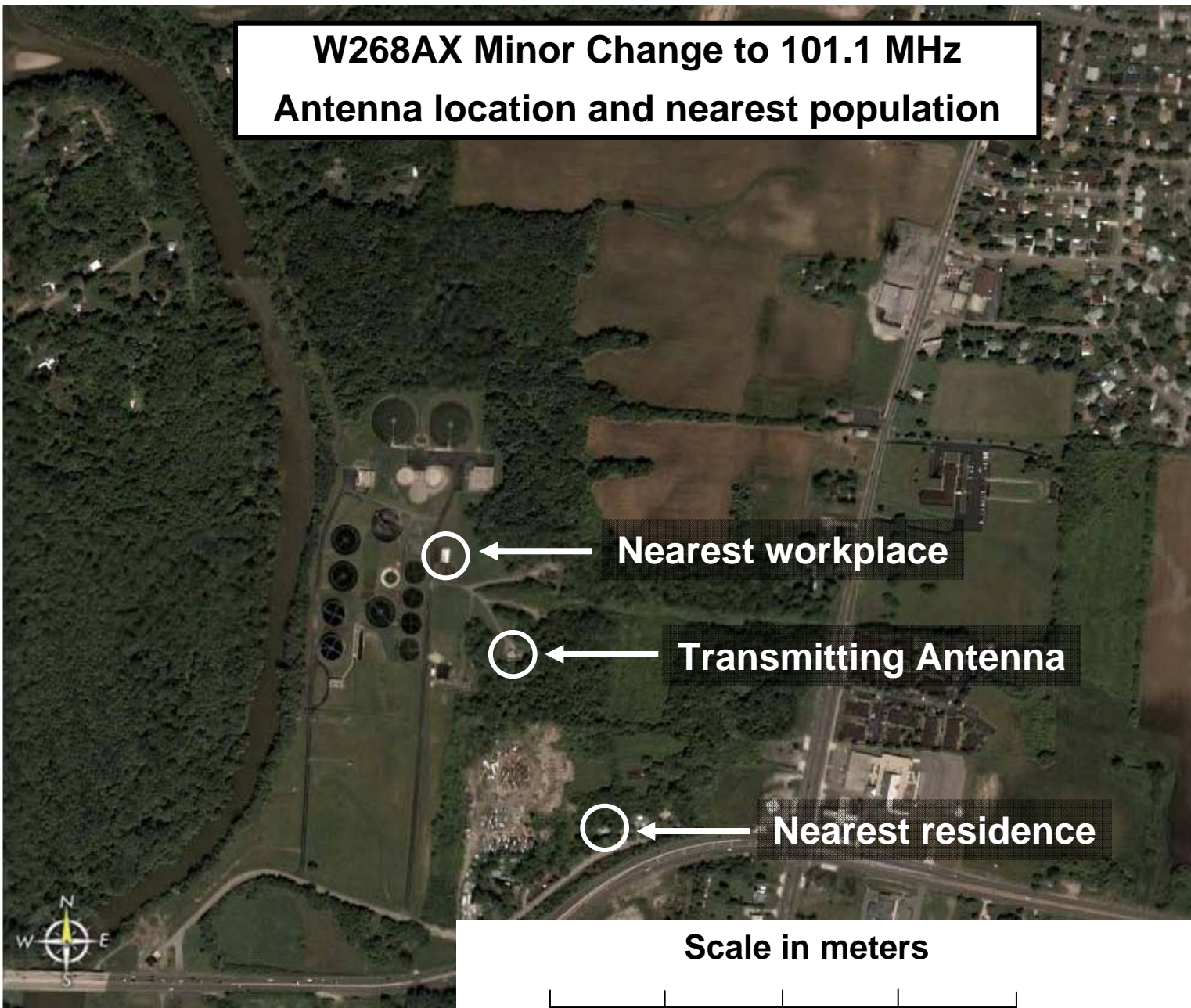
Please send comments via standard mail to the Federal Communications Commission, Consumer and Governmental Affairs Bureau, 445 12th Street, S.W., Washington, D.C., 20554. Questions can also be answered by calling the FCC's National Call Center, toll free, at 1-888-Call FCC (1-888-225-5322).

Federal Communications Commission
445 12th Street SW
Washington, DC 20554
[More FCC Contact Information...](#)

Phone: 1-888-CALL-FCC (1-888-225-5322)
TTY: 1-888-TELL-FCC (1-888-835-5322)
Fax: 1-866-418-0232
E-mail: fccinfo@fcc.gov

- [Privacy Policy](#)
- [Website Policies & Notices](#)
- [Required Browser Plug-ins](#)
- [Freedom of Information Act](#)

W268AX Minor Change to 101.1 MHz
Antenna location and nearest population



0 150 300 450 600

Interference Contour Calculations

Take W268AX's ERP at a given HAAT, looking at 101.1 MHz to ensure that the translator's interference contour will not overlap the protected contour of other stations. If the distance of the protected contour plus the distance of the worst-case interference contour is less than the distance between stations, there is no possible overlap as determined by Rule 74.1204.

Station and Call Sign	Facility ID #	Station Class	Station Freq.	Azimuth Deg.	Dist. km	Prot. Contr.		W268AX Interf. Contour				Clearance km
						dBu	km	W	m	dBu	km	
WEEC, Springfield, OH (LIC)	73726	B	100.7	57.7	28.4	54	65.1	No interference over a populated area. Analysis below.				
WIZF, Erlanger, KY (LIC)	5893	A	101.1	203.7	87.3	60	28.3	53	65	40	23.6	35.4
WWCD, Grove City, OH (LIC)	28644	A	101.1	90.4	93.7	60	28.3	104	46	40	23.5	41.9
WWCD, Grove City, OH (USED)	28644	A	101.1	89.5	92.2	60	28.3	104	46	40	23.5	37.7
New, Hillsboro, OH (APP)	139539	FX	101.1	146.2	83.2	60	5.6	85	45	40	22.1	55.5
New, Hillsboro, OH (APP)	140101	FX	101.1	146.4	81.3	60	<3.0	85	45	40	22.1	>56.2
WFMG Richmond, IN (USED)	41845	B1	101.3	270.2	66.9	57	52.1	57	43	51	9.9	4.9
WFMG Richmond, IN (RSV)	41845	B1	101.3	278.8	70.4	57	52.1	63	44	51	10.3	8.0
WFMG Richmond, IN (LIC)	41845	B1	101.3	270.5	67.0	57	52.1	57	43	51	9.9	5.0
WCWT, Centerville, OH	9780	D	101.5	179.7	22.0	60	4.4	62	31	100	0.6	17.0
WKSW, Enon, OH (APP)	9780	D	101.5	49.7	9.4	60	28.3	No interference over a populated area. Analysis below.				
W268AR, Wilmington, OH	138927	FX	101.5	143.8	44.6	60	6.5	87	43	100	0.7	37.4
W269BP, Richmond, IN	148424	FX	101.7	271.4	62.0	60	4.1	58	43	100	0.5	57.4
WKSW, Urbana, OH (LIC)	10113	A	101.7	52.5	41.0	60	28.3	103	31	100	0.7	12.0
WKSW, Urbana, OH (USED)	10113	A	101.7	50.1	48.3	60	28.3	103	30	100	0.7	19.3

Notes:

Translator, Facility ID # 139539 has applied to run 55W ERP at 40m HAAT. Therefore their 60dBu protected contour is 5.6 km.

Translator, Facility ID # 140101 has applied to run less than 1W ERP at 88m HAAT in the direction of W268AX (326.4 degrees) through a directional antenna. Therefore their 60dBu protected contour in this azimuth is less than 3.0 km.

W268AR, Facility ID # 138927, has a CP to run 13W ERP at 108m HAAT. Therefore their 60dBu protected contour is 6.5 km.

W269BP, Facility ID # 148424, has a CP to run 27W ERP at 31m HAAT. Therefore their 60dBu protected contour is 4.1 km.

WKSW (APP) and WEEC (LIC) Interference Analysis:

The proposed translator is within the 60 dbu contour of upper second adjacent station WKSW (APP) channel 268. The WKSW (APP) contour at the translator site is 78.158 dbu f(50,50). Using the ratio of 100:1 (translator to WKSW) on the second adjacent channel, the interference contour affecting WKSW (APP) extends to the 118.158 dbu (78.158 dbu + 40 dbu) contour. Using the free space equation, the predicted interference area extends 90 meters from the antenna, only in its main lobe.

The proposed translator is within the 54 dbu contour of lower second adjacent station WEEC (LIC) channel 264. The WEEC (LIC) contour at the translator site is 76.546 dbu f(50,50). Using the ratio of 100:1 (translator to WEEC) on the second adjacent channel, the interference contour affecting WEEC (LIC) extends to the 116.546 dbu (76.546 dbu + 40 dbu) contour. Using the free space equation, the predicted interference area extends 108 meters from the antenna, only in its main lobe. For analytical purposes, this is used as the "worst case" interference contour.

The interference area will never reach the nearest residence, which is 259 meters from the base of the tower and is 264 meters from the radiation center (51 meters AGL). The interference area will never reach the nearest place of employment, which is 152 meters from the base of the tower and is 160 meters from the radiation center (51 meters AGL). Considering this closest inhabited structure, the downward radiated power of the 2-bay array at a negative 19 degrees is approximately 45% of that in the main lobe directed to the horizon, so the actual interference contour will be much less than the "worst case" calculation.

Therefore, the application is in compliance with the following: *74.1204 (d) the provisions of this section concerning prohibited overlap will not apply where the area of such overlap lies entirely over water. In addition, an application otherwise precluded by this section will be accepted if it can be demonstrated that no actual interference will occur due to intervening terrain, lack of population or such other factors as may be applicable.*

This “Minor Change in a licensed facility” only changes the operating frequency of Facility # 147951, and includes a new interference analysis per the previous pages.

The following items are provided for reference only.

They are completely unchanged from the granted application BMPFT 20061219AAA, as licensed by BLFT 20070119ADV.


[FCC Home](#) | [Search](#) | [Updates](#) | [E-Filing](#) | [Initiatives](#) | [For Consumers](#) | [Find People](#)


Antenna Structure Registration


[FCC](#) > [WTB](#) > [ASR](#) > [Online Systems](#) > ASR Search

[FCC Site Map](#)

ASR Registration Search

Registration 1011072

[? HELP](#)
[New Search](#) [Return to Results](#) [Printable Page](#) [Reference Copy](#) [Map Registration](#)

Registration Detail

Reg Number	1011072	Status	Granted
File Number	A0519008	Constructed	06/01/1975
FAA Study	2002-AGL-7190-OE	EMI	No
FAA Issue Date	02/27/2003	NEPA	No

Antenna Structure

Structure Type TOWER - Free standing or Guyed Structure used for Communications Purposes

Location (in NAD83 Coordinates - [Convert to NAD27](#))

Lat/Long	39-49-32.3 N 084-08-59.2 W	0.58 km (0.36 mi) NW of Needmore Road and Old Troy Pike (Hooks Corner)
City, State	HUBER HEIGHTS , OH	
Center of AM Array		

Heights (meters)

Elevation of Site Above Mean Sea Level	Overall Height Above Ground (AGL)
255.9	111.6
Overall Height Above Mean Sea Level	Overall Height Above Ground w/o Appurtenances
367.5	109.8

Painting and Lighting Specifications

FCC Paragraphs 1, 3, 12, 21

Owner & Contact Information

FRN	0015571052	Licensee ID	L00023956
Assignor FRN	0008590069	Assignor ID	L00652314

Owner

City of Huber Heights, OH
 Attention To: John L. Geiger
 6131 Taylorsville Rd
 Huber Heights , OH 45424

P: (937)233-1423
 E: john.geiger@ci.huber-heights.oh.us

Contact

Geiger , John L
 6131 TAYLORSVILLE RD

P: (937)233-1423
 E: john.geiger@ci.huber-heights.oh.us

Huber Heights , OH 45424

Last Action Status

Status	Granted	Received	10/03/2006
Purpose	Change Owner	Entered	10/03/2006
Mode	Interactive		

Related Applications

10/03/2006 [A0519008](#) - Change Owner (OC)
03/12/2003 [A0315472](#) - Modification (MD)
03/12/2003 [A0315484](#) - Duplicate (DU)
[All related applications \(6\)](#)

Comments

Comments

None

Automated Letters

10/04/2006 [Ownership Change](#), Reference 527246
10/04/2006 [Authorization](#), Reference 527282
03/15/2004 [Construction Reminder](#), Reference 323283
[All letters \(9\)](#)

ASR Help

[ASR License Glossary](#) - [FAQ](#) - [Online Help](#) - [Documentation](#) - [Technical Support](#)

ASR Online Systems

[TOWAIR](#)- [CORES](#) - [ASR Online Filing](#) - [Application Search](#) - [Registration Search](#)

About ASR

[Privacy Statement](#) - [About ASR](#) - [ASR Home](#)

Registration Search

By Registration Number

[FCC](#) | [Wireless](#) | [ULS](#) | [CORES](#)

[Help](#) | [Tech Support](#)

Federal Communications Commission
445 12th Street SW
Washington, DC 20554

Phone: 1-888-CALL-FCC (1-888-225-5322)
TTY: 1-888-TELL-FCC (1-888-835-5322)
E-mail: fccinfo@fcc.gov



Audio Division

(202)-418-2700

Antenna Height Above Average Terrain (HAAT) / Contour Calculations

[FCC](#) > [MB](#) > [Audio Division](#) > [HAAT/Contour Calculations](#)

[FCC](#)

Antenna Height Above Average Terrain Calculations -- Input

Latitude **39 49 32.3 North**
Longitude **84 8 59.2 West** (NAD 27)

Height of antenna radiation center above mean sea level [RCAMSL] = **306.9** meters

Number of Evenly Spaced Radials = 12 0° is referenced to True North

Results:

Calculated HAAT= 40. meters

(Antenna Height Above Average Terrain)
using the 30 second FCC/NGDC terrain data)

Antenna Radiation Center Heights Above Individual Radials:

0.0°	47.4 meters
30.0°	19.0 meters
60.0°	36.8 meters
90.0°	46.3 meters
120.0°	41.0 meters
150.0°	46.2 meters
180.0°	30.5 meters
210.0°	66.9 meters
240.0°	42.4 meters
270.0°	43.0 meters
300.0°	29.0 meters
330.0°	29.9 meters

Note that the maximum ERP as permitted by Rule 74.1235 is 120 watts or more; except at 210 +/- 15 degrees, where the maximum ERP is 55 watts



Audio Division

(202)-418-2700

Antenna Height Above Average Terrain (HAAT) / Contour Calculations

[FCC](#) > [MB](#) > [Audio Division](#) > [HAAT/Contour Calculations](#)

[FCC](#)

Antenna Height Above Average Terrain Calculations -- Input

Latitude **39 49 32.3 North**
Longitude **84 8 59.2 West** (NAD 27)

Height of antenna radiation center above mean sea level [RCAMSL] = **306.9** meters

For Radials Used In The Interference Contour Calculations

Antenna Radiation Center Heights Above Individual Radials:

3.0°	39.5 meters
4.0°	35.6 meters
50.0°	30.0 meters
51.0°	30.2 meters
52.0°	30.7 meters
53.0°	31.4 meters
89.0°	45.6 meters
90.0°	46.3 meters
91.0°	46.3 meters
98.0°	45.7 meters
143.0°	42.5 meters
144.0°	43.5 meters
146.0°	45.2 meters
147.0°	45.8 meters
179.0°	31.0 meters
180.0°	30.5 meters
201.0°	63.9 meters
202.0°	63.9 meters
203.0°	64.2 meters
204.0°	64.8 meters
270.0°	43.0 meters
271.0°	43.3 meters
272.0°	43.5 meters
278.0°	44.1 meters
279.0°	44.0 meters
356.0°	55.2 meters
357.0°	53.7 meters

TX station: BGK77/2

Site name:

Frequency: 98.00 MHz

Vertical diagram at an azimuth of 0° degrees

Dep (°)	Er (%)	ERP (W)	Dep (°)	Er (%)	ERP (W)	Dep (°)	Er (%)	ERP (W)
0.0	100.0	778.1	60.0	61.7	295.8	120.0	48.9	185.7
2.0	99.6	771.9	62.0	64.9	328.0	122.0	45.4	160.3
4.0	98.4	753.4	64.0	67.9	358.3	124.0	41.7	135.3
6.0	96.4	723.5	66.0	70.5	387.2	126.0	37.9	111.8
8.0	93.7	683.0	68.0	73.0	415.0	128.0	34.0	89.8
10.0	90.2	633.6	70.0	75.1	438.9	130.0	29.8	69.2
12.0	86.1	576.9	72.0	76.8	458.6	132.0	25.4	50.3
14.0	81.3	514.9	74.0	78.2	475.6	134.0	20.8	33.7
16.0	76.0	449.7	76.0	79.1	486.5	136.0	16.0	19.9
18.0	70.2	383.3	78.0	79.6	492.8	138.0	11.0	9.3
20.0	63.9	317.8	80.0	80.0	498.2	140.0	5.8	2.6
22.0	57.3	255.1	82.0	80.1	499.5	142.0	0.6	0.0
24.0	50.3	197.0	84.0	80.0	498.5	144.0	4.6	1.7
26.0	43.2	145.1	86.0	79.8	495.2	146.0	9.9	7.7
28.0	35.9	100.4	88.0	79.3	489.7	148.0	15.2	18.1
30.0	28.5	63.4	90.0	78.7	482.3	150.0	20.5	32.8
32.0	21.1	34.5	92.0	78.0	473.0	152.0	25.8	51.7
34.0	13.6	14.5	94.0	77.0	461.9	154.0	30.9	74.2
36.0	6.3	3.1	96.0	75.8	447.1	156.0	35.9	100.5
38.0	0.9	0.1	98.0	74.2	428.8	158.0	40.9	130.2
40.0	7.9	4.8	100.0	72.5	409.1	160.0	45.6	162.1
42.0	14.6	16.6	102.0	71.0	391.9	162.0	50.1	195.5
44.0	21.1	34.6	104.0	69.3	373.2	164.0	54.3	229.4
46.0	27.3	58.0	106.0	67.4	353.2	166.0	58.1	262.7
48.0	33.2	85.8	108.0	65.3	332.0	168.0	61.5	294.3
50.0	38.8	117.2	110.0	63.1	309.5	170.0	64.5	323.3
52.0	44.1	151.5	112.0	60.3	283.3	172.0	66.9	348.5
54.0	49.1	187.7	114.0	57.4	256.6	174.0	68.9	369.1
56.0	53.7	224.4	116.0	54.6	232.1	176.0	70.3	384.4
58.0	57.9	260.4	118.0	51.9	209.2	178.0	71.1	393.8

TX station: BGK77/2

Site name:

Frequency: 98.00 MHz

Horizontal diagram at 0.0° depres. (Total antenna)

Az (°)	Er (%)	ERP (W)	Az (°)	Er (%)	ERP (W)	Az (°)	Er (%)	ERP (W)
0.0	98.3	778.1	120.0	79.2	505.6	240.0	80.2	518.5
10.0	98.3	778.1	130.0	76.2	468.0	250.0	85.3	585.4
20.0	98.3	778.1	140.0	73.2	431.7	260.0	90.9	666.0
30.0	98.8	786.1	150.0	71.0	406.5	270.0	95.3	731.2
40.0	98.8	786.1	160.0	70.2	397.0	280.0	97.3	762.3
50.0	99.2	792.9	170.0	70.2	397.0	290.0	98.3	778.1
60.0	100.0	805.3	180.0	70.2	397.0	300.0	100.0	805.3
70.0	99.1	791.4	190.0	70.2	397.0	310.0	99.2	792.9
80.0	96.3	746.7	200.0	70.2	397.0	320.0	98.8	786.1
90.0	92.3	685.7	210.0	71.2	408.4	330.0	98.8	786.1
100.0	87.3	613.2	220.0	73.2	431.7	340.0	98.3	778.1
110.0	83.2	558.1	230.0	77.2	480.4	350.0	98.3	778.1

NICOM BKG-Series	Two-Bay: 0.90 efficiency
-------------------------	---------------------------------

True Azimuth (degrees)	ERP with 118W at antenna (watts)	Antenna Reference (degrees)	Relative Field (E)	Power Gain (G)	Max ERP per 74.1235 (watts)
0	104.5	310	0.992	0.98	120
10	103.7	320	0.988	0.98	120
20	103.7	330	0.988	0.98	250
30	102.6	340	0.983	0.97	250
40	102.6	350	0.983	0.97	250
50	102.6	0	0.983	0.97	170
60	102.6	10	0.983	0.97	170
70	102.6	20	0.983	0.97	170
80	103.7	30	0.988	0.98	120
90	103.7	40	0.988	0.98	120
100	104.5	50	0.992	0.98	120
110	106.2	60	1.000	1.00	120
120	104.3	70	0.991	0.98	120
130	98.5	80	0.963	0.93	120
140	90.5	90	0.923	0.85	120
150	80.9	100	0.873	0.76	120
160	73.5	110	0.832	0.69	120
170	66.6	120	0.792	0.63	250
180	61.7	130	0.762	0.58	250
190	56.9	140	0.732	0.54	250
200	53.5	150	0.710	0.50	55
210	52.3	160	0.702	0.49	55
220	52.3	170	0.702	0.49	55
230	52.3	180	0.702	0.49	120
240	52.3	190	0.702	0.49	120
250	52.3	200	0.702	0.49	120
260	53.8	210	0.712	0.51	120
270	56.9	220	0.732	0.54	120
280	63.3	230	0.772	0.60	120
290	68.3	240	0.802	0.64	250
300	77.3	250	0.853	0.73	250
310	87.8	260	0.909	0.83	250
320	96.5	270	0.953	0.91	250
330	100.5	280	0.973	0.95	250
340	102.6	290	0.983	0.97	250
350	106.2	300	1.000	1.00	120