

W248CA CP Mod

Bradenton, FL
BNPFT20130819AFP
Latitude: 27-32-41 N
Longitude: 082-34-28 W
ERP: 0.02 kW
HAAT: 9 m
Channel: 248
Frequency: 97.5 MHz
AMSL Height: 12.88 m
Elevation: 2.88 m
Horiz. Pattern: Directional
Vert. Pattern: No
Prop Model: FCC Model
Loc. Variability: 50.0%
Time Variability: 50.0%
HAAT Mthd: FCC

WPCV

Winter Haven, FL
BLH19890908KA
Latitude: 28-07-35 N
Longitude: 081-33-03 W
ERP: 100.00 kW
Channel: 248
Frequency: 97.5 MHz
AMSL Height: 340.0 m
Elevation: 26.0 m
Horiz. Pattern: Omni
Vert. Pattern: No
Prop Model: FCC Model
Loc. Variability: 50.0%
Time Variability: 50.0%
HAAT Mthd: FCC

EXHIBIT 13-B

Section 74.1204 Contour Protection
WPCV CH248C0 Winter Haven, FL

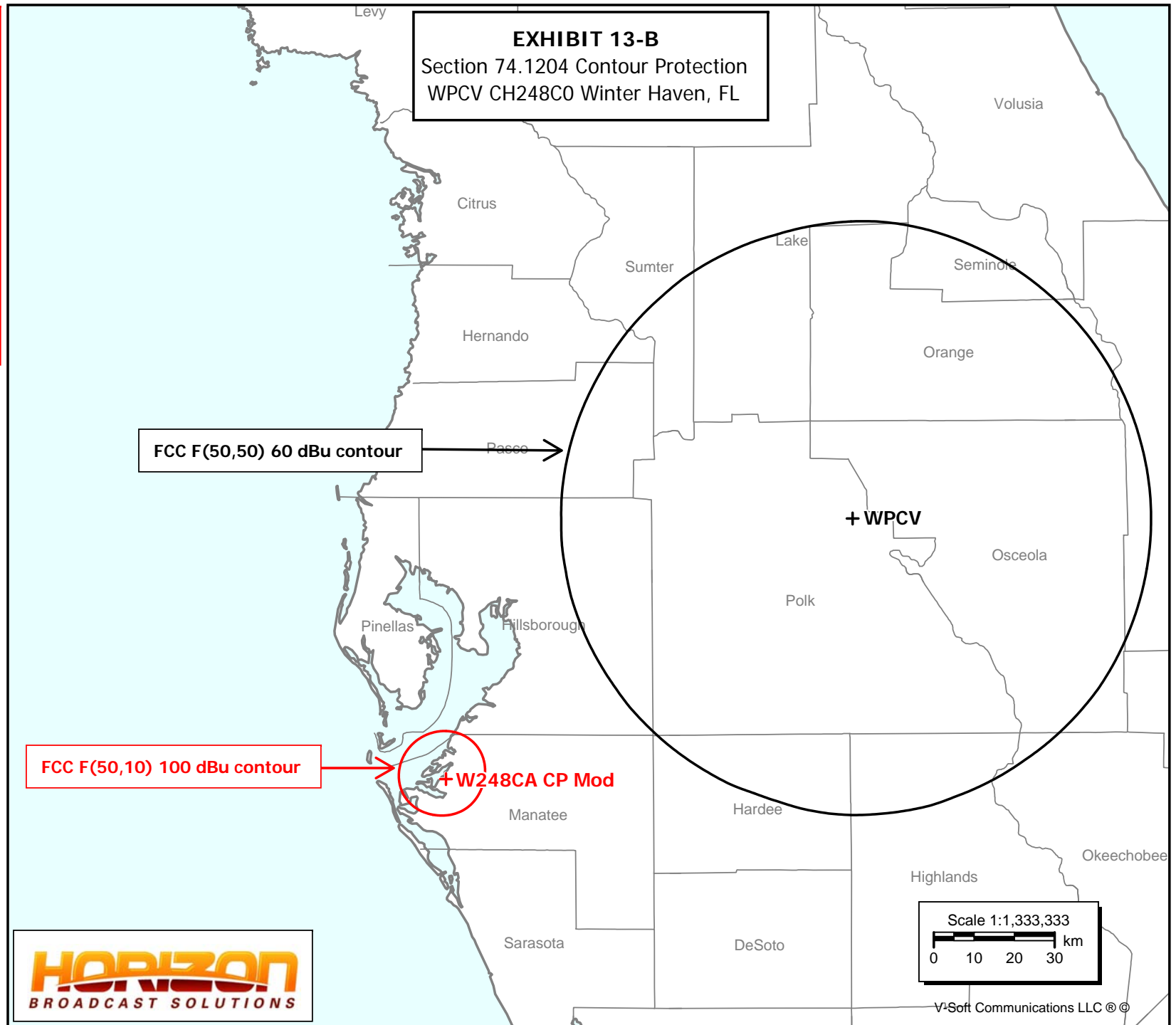


Exhibit 13-C
Section 74.1204
Contour Protection to WXTB

This comprehensive exhibit has been prepared to demonstrate that the W248CA modification will not cause prohibited interference to WXTB, Channel 250C, Clearwater, FL. The WXTB F(50,50) protected contour at the W248CA application site is 64.2 dBu. Therefore the W248CA F(50,10) interfering contour with respect to WXTB is the 104.2 dBu contour. Using the FCC's FM propagation curves program (see attached), the 104.2 dBu contour was calculated to extend 196 meters from the W248CA antenna.

Attached are Google Earth screen shots showing the W248CA tower site and the surrounding area. The nearest occupied building is a residence located 266 meters east of the W248CA antenna location at it's nearest point. Therefore the 196 meter interfering contour does not reach any populated areas.

The attached Google Earth screen shots show no occupied buildings within 196 meters of the antenna location.

It is believed that the proposed modification to W248CA will not cause prohibited interference to WXTB as no interference reaches any areas where there are occupied buildings.

W248CA CP Mod

Bradenton, FL
BNPFT20130819AFP
Latitude: 27-32-41 N
Longitude: 082-34-28 W
ERP: 0.02 kW
HAAT: 9 m
Channel: 248
Frequency: 97.5 MHz
AMSL Height: 12.88 m
Elevation: 2.88 m
Horiz. Pattern: Omni
Vert. Pattern: No
Prop Model: FCC Model
Loc. Variability: 50.0%
Time Variability: 50.0%
HAAT Mthd: FCC

WXTB

Winter Haven, FL
BLH20090706AFW
Latitude: 28-10-56 N
Longitude: 082-46-06 W
ERP: 100.00 kW
Channel: 250
Frequency: 97.9 MHz
AMSL Height: 461.0 m
Elevation: 3.0 m
Horiz. Pattern: Omni
Vert. Pattern: No
Prop Model: FCC Model
Loc. Variability: 50.0%
Time Variability: 50.0%
HAAT Mthd: FCC

EXHIBIT 13-C

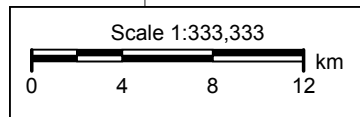
Section 74.1204 Contour Protection
WXTB CH250C Clearwater, FL

+W248CA CP Mod

WXTB FCC F(50,50)
64.2 dBu contour

Manatee

HORIZON
BROADCAST SOLUTIONS



V-Soft Communications LLC ©

Screen 3 - Results

Results of Calculation

HAAT less than 30 meters
reset to 30 meters for calculations

Distance to Contour = 0.196 kilometers

[Back to Numeric Entries](#)

[Back to Initial Selections](#)

Input Data from Screens 1 and 2

ERP = 0.020 kW

HAAT = 9.0 meters

Field Strength = 104.1 dBu

Distances are in **meters and kilometers**

Power is in **kW (kilowatts)**

Field Strength is in **dBu**

FM and NTSC TV Channels 2 through 6

F(50,10) for interfering contours selected

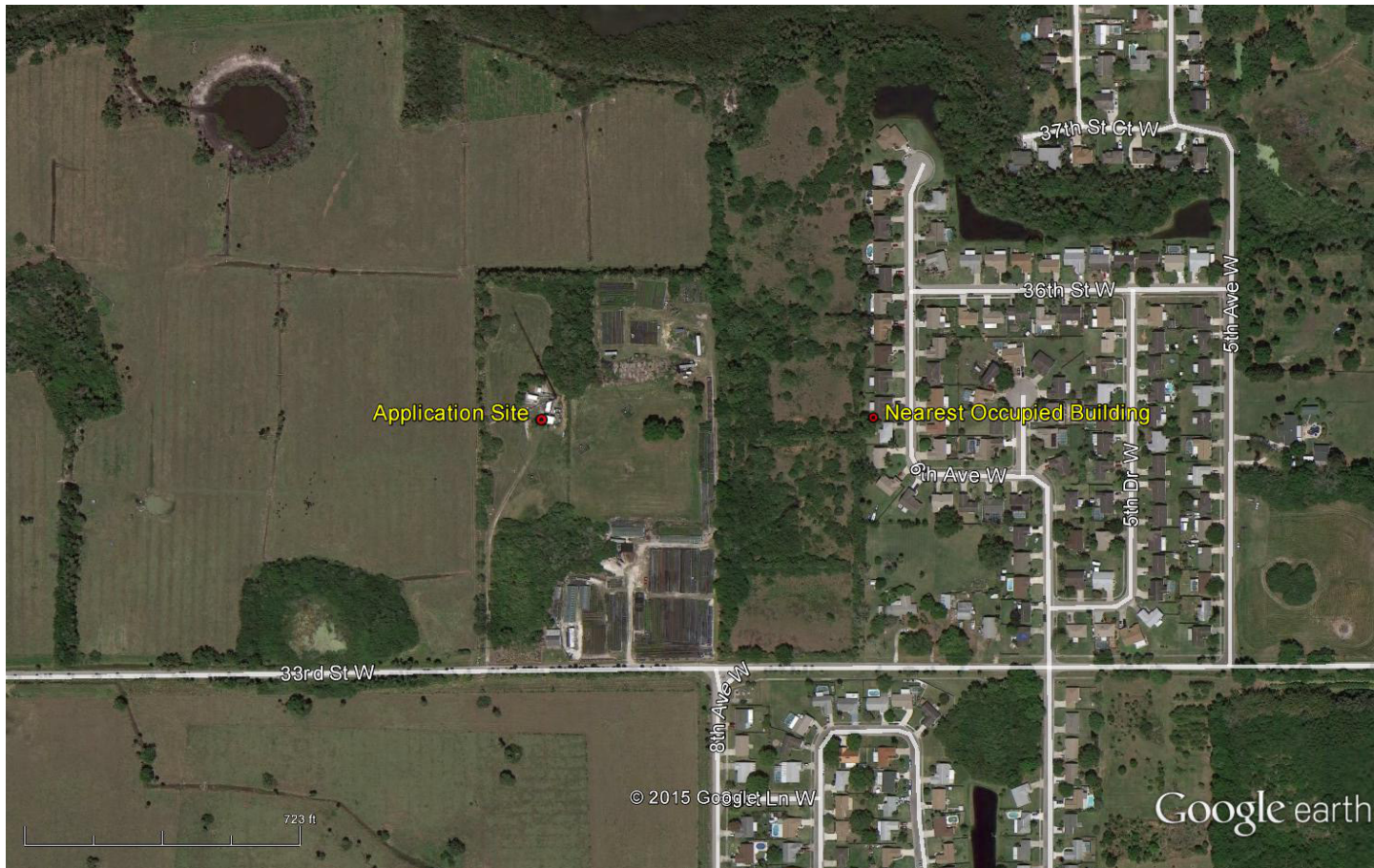
Find Distance, given a Field Strength



Google earth

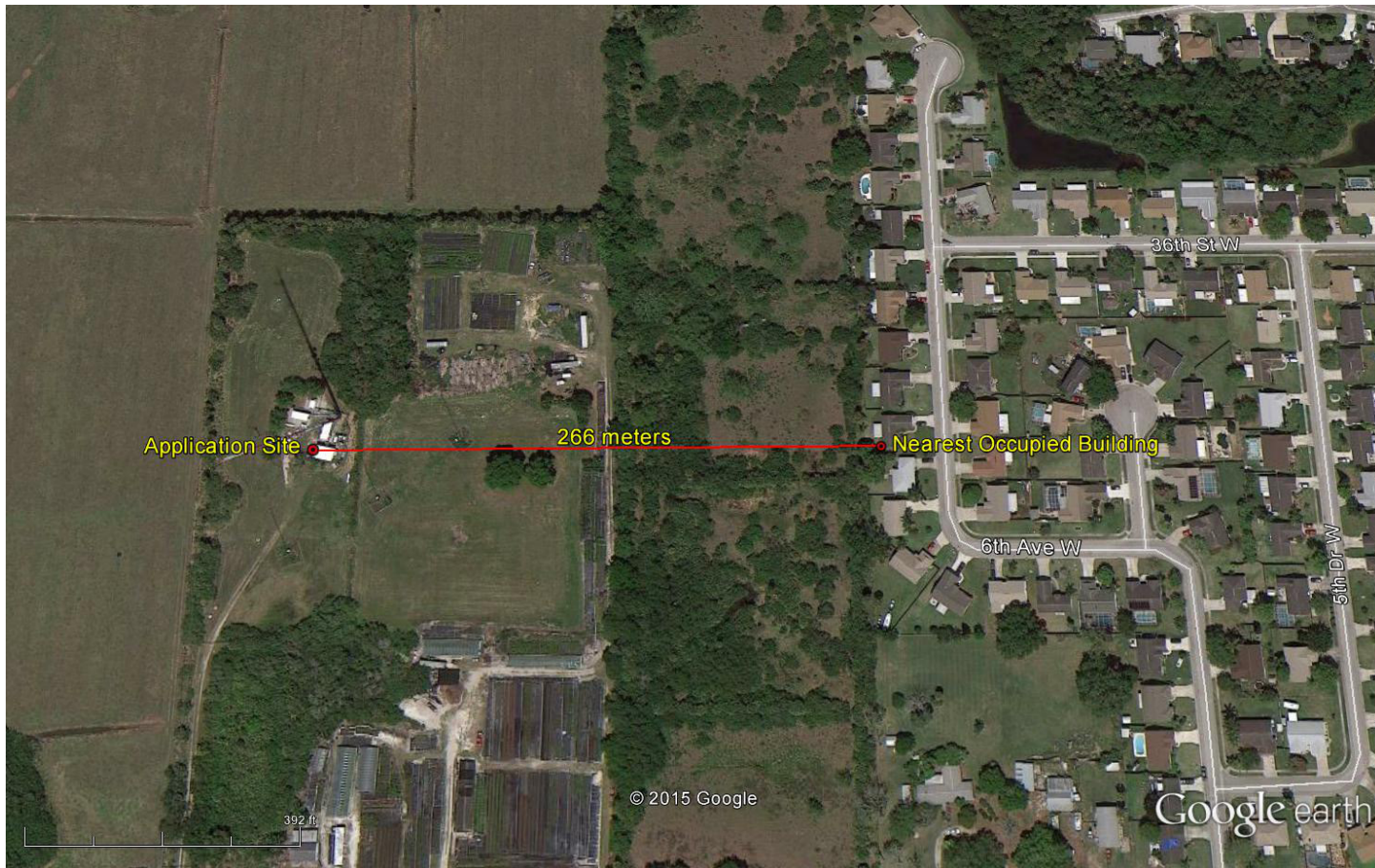
feet 200
meters 60





Google earth





Google earth

feet
meters



Exhibit 13-D
Section 74.1204
Contour Protection to W246CY Bradenton, FL
CP Mod BMPFT-20151201ALY

This comprehensive exhibit has been prepared to demonstrate that the W248CA modification will not cause prohibited interference to the CP modification for W246CY, Channel 246D, Bradenton, FL. The W246CY F(50,50) protected contour at the W248CA application site is 66.2 dBu. Therefore the W248CA F(50,10) interfering contour with respect to WXTB is the 106.2 dBu contour. Using the FCC's FM propagation curves program (see attached), the 106.2 dBu contour was calculated to extend 155 meters from the W248CA antenna.

Attached are Google Earth screen shots showing the W248CA tower site and the surrounding area. The nearest occupied building is a residence located 266 meters east of the W248CA antenna location at it's nearest point. Therefore the 155 meter interfering contour does not reach any populated areas.

The attached Google Earth screen shots show no occupied buildings within 155 meters of the antenna location.

It is believed that the proposed modification to W248CA will not cause prohibited interference to W246CY as no interference reaches any areas where there are occupied buildings.

W248CA CP Mod

Bradenton, FL
BNPFT20130819AFP
Latitude: 27-32-42 N
Longitude: 082-34-29 W
ERP: 0.02 kW
HAAT: 9 m
Channel: 248
Frequency: 97.5 MHz
AMSL Height: 12.0 m
Elevation: 2.0 m
Horiz. Pattern: Directional
Vert. Pattern: No
Prop Model: None

W246CY.CP

Bradenton, FL
BNPFT20130828AAD
Latitude: 27-28-31 N
Longitude: 082-32-11 W
ERP: 0.015 kW
Channel: 246
Frequency: 97.1 MHz
AMSL Height: 113.0 m
Elevation: 5.0 m
Horiz. Pattern: Omni
Vert. Pattern: No
Prop Model: None

W246CY Appl.

Bradenton, FL
BMPFT20151201ALY
Latitude: 27-35-26 N
Longitude: 082-31-28 W
ERP: 0.25 kW
HAAT: 0.0 m
Channel: 246
Frequency: 97.1 MHz
AMSL Height: 63.0 m
Elevation: 7.0 m
Horiz. Pattern: Directional
Vert. Pattern: No
Prop Model: None

EXHIBIT 13-D

Section 74.1204 Contour Protection
W246CY CH 246D Bradenton, FL

FCC F(50,50) 66.2 dBu contour

FCC F(50,50) 60 dBu contour

FCC F(50,10) 100 dBu contour

FCC F(50,50) 60 dBu contour

+ W246CY Appl.

W248CA CP Mod

+ W246CY.CP

HORIZON
BROADCAST SOLUTIONS

Scale 1:200,000
0 2 4 6 km

V-Soft Communications LLC ©



Federal Communications Commission

[Home](#) / [The FCC](#) / [FCC Encyclopedia](#) / [FM and TV Propagation Curves](#)

FM and TV Propagation Curves

[Print](#)[Email](#)

Screen 3 - Results

Results of Calculation

HAAT less than 30 meters
reset to 30 meters for calculations

Distance to Contour = 0.155 kilometers

[Back to Numeric Entries](#)[Back to Initial Selections](#)

Input Data from Screens 1 and 2

ERP = 0.020 kW

HAAT = 9.0 meters

Field Strength = 106.1 dBu

Distances are in **meters and kilometers**

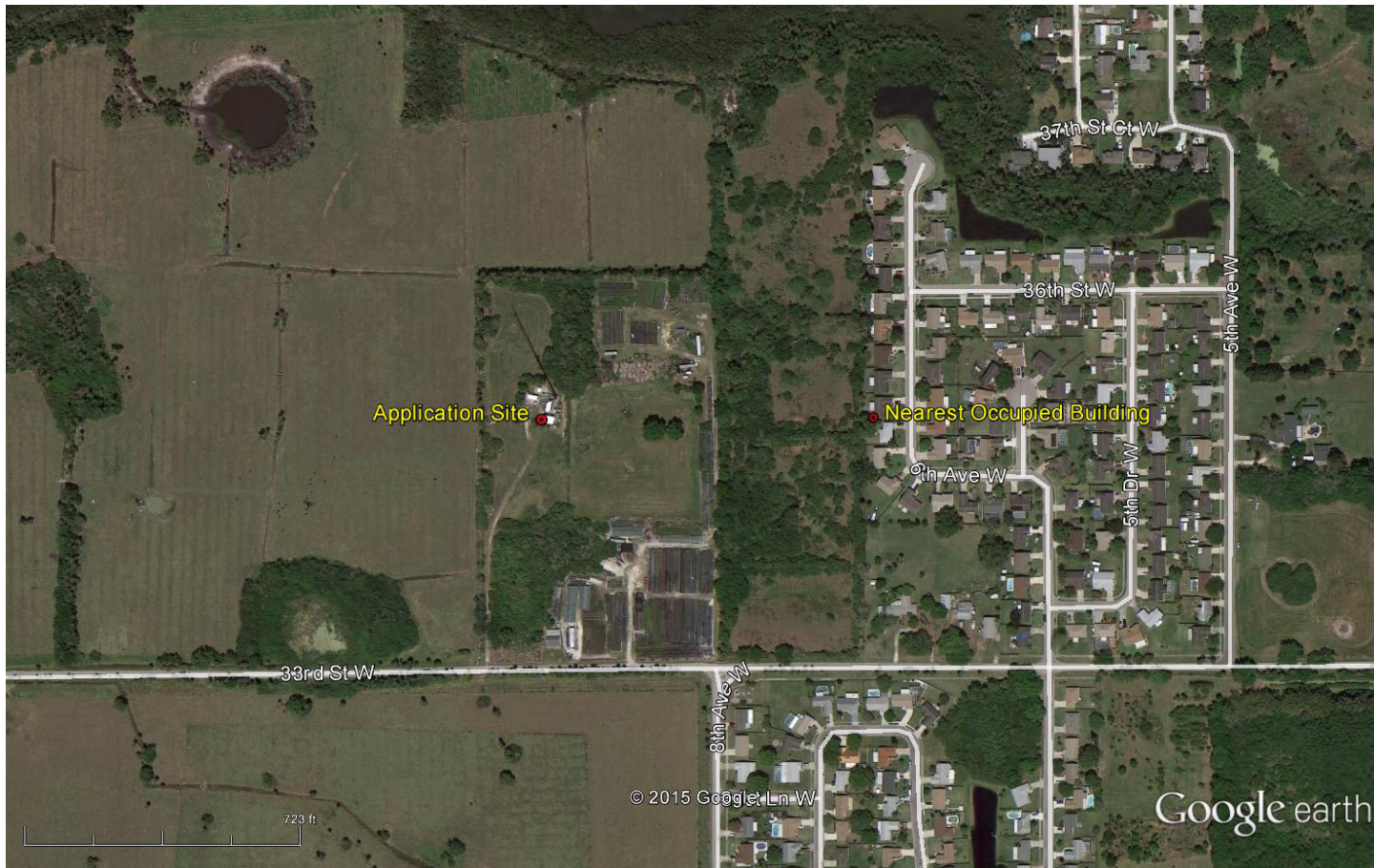
Power is in **kW (kilowatts)**

Field Strength is in **dBu**

FM and NTSC TV Channels 2 through 6

F(50,10) for interfering contours selected

Find Distance, given a Field Strength



Google earth

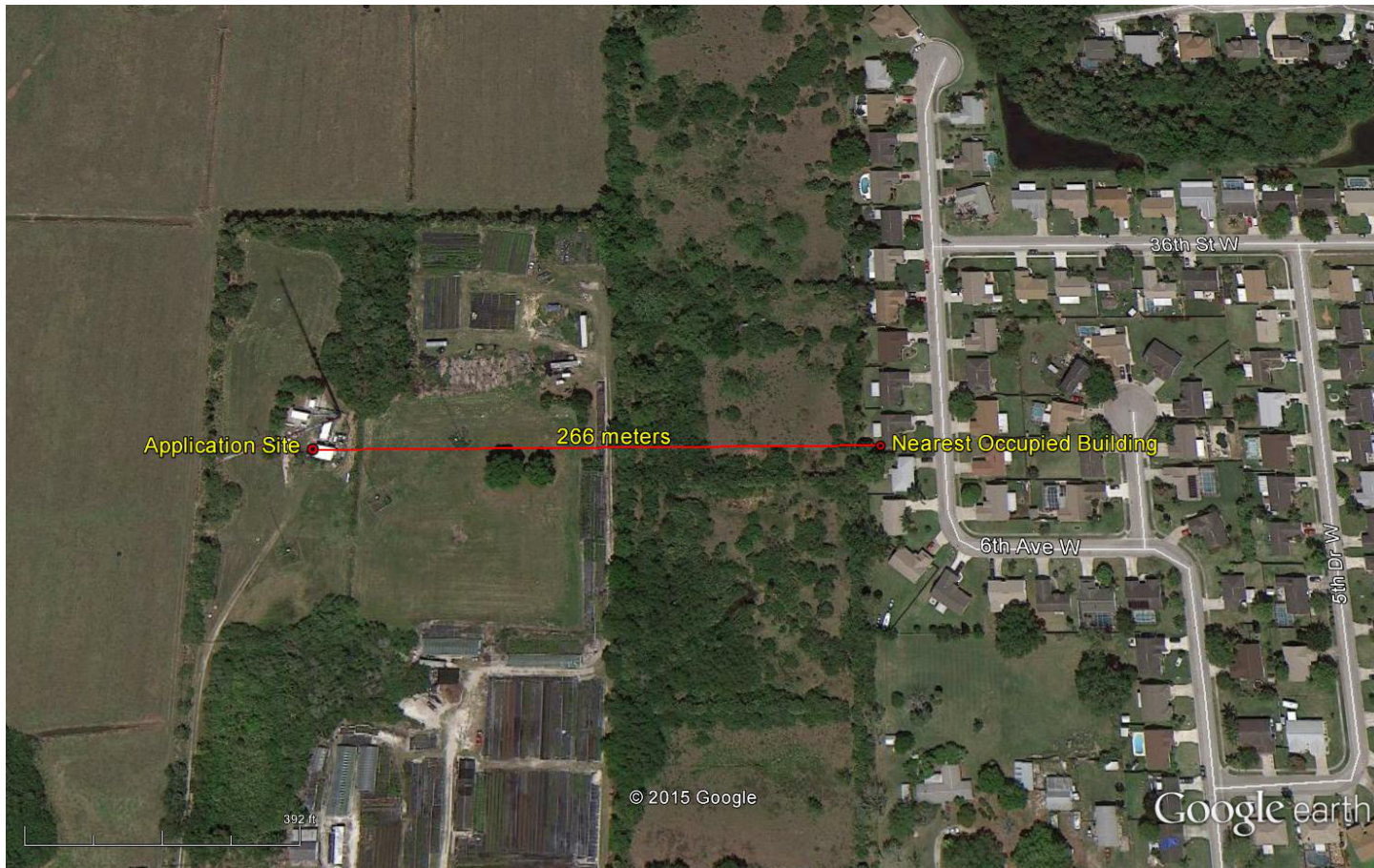




Google earth

feet 200
meters 60





Google earth

feet
meters



W248CA CP Mod

Bradenton, FL
BNPFT20130819AFP
Latitude: 27-32-41 N
Longitude: 082-34-28 W
ERP: 0.02 kW
HAAT: 9 m
Channel: 248
Frequency: 97.5 MHz
AMSL Height: 12.88 m
Elevation: 2.88 m
Horiz. Pattern: Directional
Vert. Pattern: No
Prop Model: None

W247AF

Sarasota, FL
BLFT20000218ABF
Latitude: 27-20-22 N
Longitude: 082-27-56 W
ERP: 0.08 kW
Channel: 247
Frequency: 97.3 MHz
AMSL Height: 55.0 m
Elevation: 8.0 m
Horiz. Pattern: Omni
Vert. Pattern: No
Prop Model: None

EXHIBIT 13-E

Section 74.1204 Contour Protection
W247AF CH247D Sarasota, FL

FCC F(50,10) 54 dBu contour

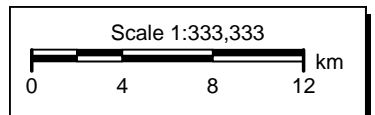
+ W248CA CP Mod

FCC F(50,50) 60 dBu contour

+ W247AF

Manatee

HORIZON
BROADCAST SOLUTIONS



V-Soft Communications LLC ©