

Exhibit 13.1 - Copy of Existing Antenna Structure Registration

**Registration Detail**

Reg Number	1057248	Status	Constructed
File Number	A0067284	Constructed	01/01/1981
EMI	No	Dismantled	
NEPA	No		

Antenna Structure

Structure Type BTWR - Building with Tower

Location (in NAD83 Coordinates)

Lat/Long 30-13-50.0 N 093-13-12.0 W

City, State LAKE CHARLES , LA

Zip 70601

Center of AM Array

Address ONE LAKESHORE DR

County CALCASIEU

Position of Tower in
Array**Heights (meters)**

Elevation of Site Above Mean Sea Level

3.0

Overall Height Above Ground (AGL)

114.3

Overall Height Above Mean Sea Level

117.3

Overall Height Above Ground w/o Appurtenances

96.0

Painting and Lighting Specifications

None

FAA Notification

FAA Study 86-ASW-1352-OE

FAA Issue Date 02/23/1987

Owner & Contact Information

FRN

Owner Entity Type

Owner

HIBERNIA NATIONAL BANK
 Attention To: ED DE LATTE
 313 CARONDELET ST
 NEW ORLEANS , LA 70130

P: (504)533-2542
 F:
 E:

Contact

P:
 F:
 E:

Last Action Status

Status Constructed

Received 10/05/1998

Purpose New

Entered 10/06/1998

Mode Mail In (Manual)

Related Applications

10/05/1998 A0067284 - New (NE)

Comments**Comments**

None

History**Date****Event**

None

Automated Letters

None

Exhibit 13.2

Vertical Plan of Antenna System

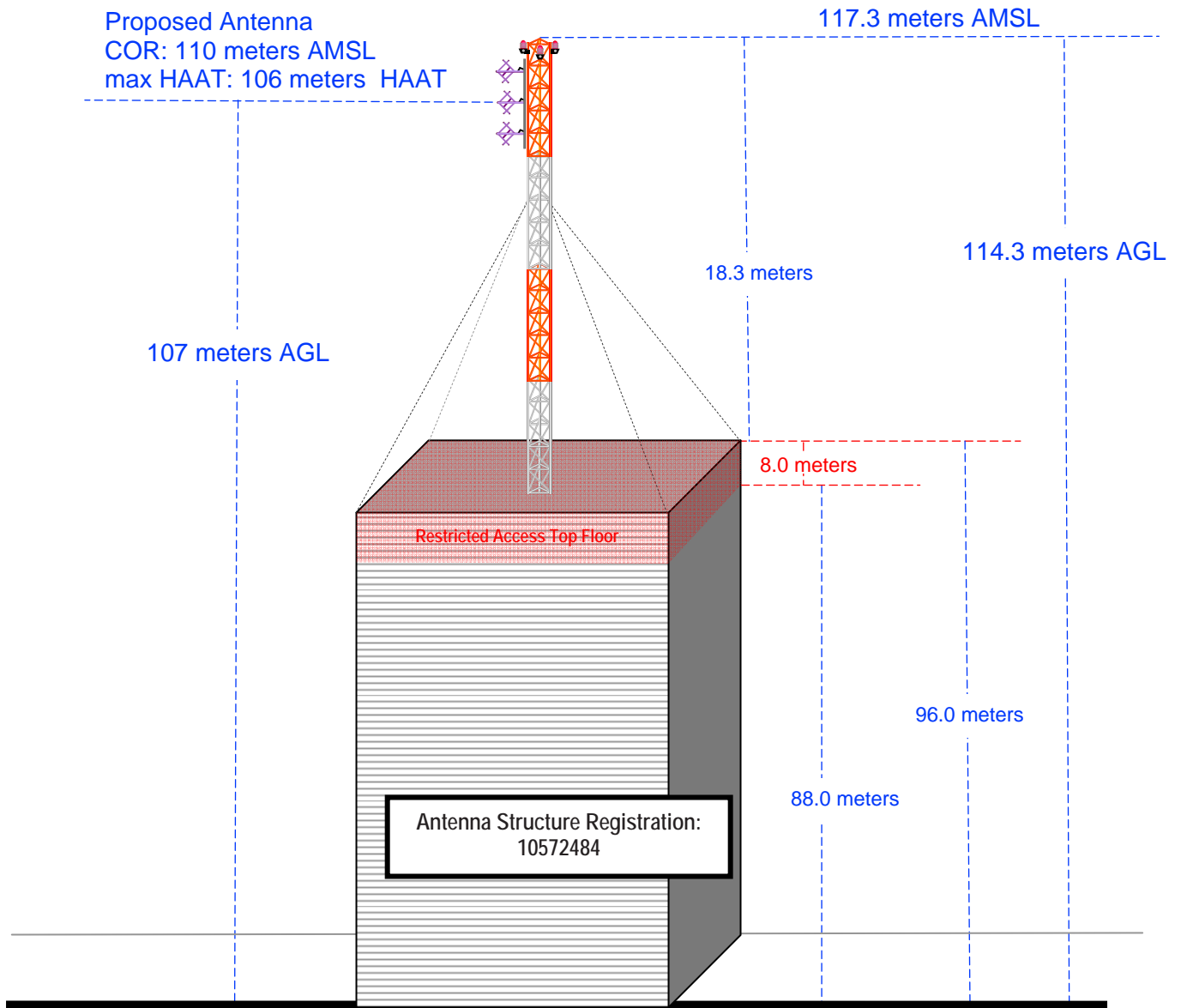
The site is located at One Lakeshore Drive,
the city of Lake Charles, Calcasieu County, Louisiana.

Site Location (NAD 27)

NL: 30° 13' 49"

WL: 93° 13' 11"

30-13-50.0NL; 93-13-12.0 WL (NAD83)



Ground Elevation = 3.0 m AMSL
Drawing is not to Scale

MUNN-REESE, INC.
Broadcast Engineering Consultants
Coldwater, MI 49036

Exhibit 13.3 Present vs. Proposed Service Contour Study

APP263D.short-form
Lake Charles, LA
BNPFT20030317LXE
Facility ID: 156145
Latitude: 30-14-09 N
Longitude: 093-12-15 W
ERP: 0.25 kW
Channel: 263D
Frequency: 100.5 MHz
AMSL Height: 106.0 m
Horiz. Pattern: Omni

60 dBµ Contour
Total Population: 131,422
Total Area: 547 sq. km

APP261D.long-form
Lake Charles, LA
Proposed Operation
Facility ID: 156145
Latitude: 30-13-49 N
Longitude: 093-13-11 W
ERP: 0.25 kW
Channel: 261D
Frequency: 100.1 MHz
AMSL Height: 110.0 m
Horiz. Pattern: Omni

60 dBµ Contour
Total Population: 136,656
Total Area: 554 sq. km

NGDC 30 SEC Terrain Database
U.S. Census 2010 PL Database

Scale 1:175,000



Short-Form 60 dBµ F(50:50) Contour

Long-Form 60 dBµ F(50:50) Contour

APP263D.short-form

Westlake

APP261D.long-form

Lake Charles

Moss Bluff

Sulphur

Carlyss

Prien

Exhibit 13.4 Proposed vs. Primary Service Contour Study

Terrain

0 179 m

NGDC 30 SEC Terrain Database
U.S. Census 2010 PL Database

KAYT(FM)
Jena, LA
BLED20001219ABM
Facility ID: 18556
Latitude: 31-33-55 N
Longitude: 092-33-00 W
ERP: 70.00 kW
Channel: 201C1
Frequency: 88.1 MHz
AMSL Height: 355.0 m
Horiz. Pattern: Omni

APP261D.long-form
Lake Charles, LA
Proposed Operation
Facility ID: 156145
Latitude: 30-13-49 N
Longitude: 093-13-11 W
ERP: 0.25 kW
Channel: 261D
Frequency: 100.1 MHz
AMSL Height: 110.0 m
Horiz. Pattern: Omni

KAYT(FM)

Primary 60 dBμ F(50:50) Contour

Long-Form 60 dBμ F(50:50) Contour

APP261D.long-form

Primary 27 dBμ F(50:50) Contour

Scale 1:750,000

0 10 20 30 km

Exhibit 13.5

Tabulation of Proposed Translator Allocation

Black Media Works, Inc.											
REFERENCE		CH# 261D - 100.1 MHz, Pwr= 0.25 kW, HAAT= 109.4 M, COR= 110 M							DISPLAY DATES		
30 13 49.0 N.		Average Protected F(50-50)= 13.44 km							DATA 03-25-13		
93 13 11.0 W.		Omni-directional							SEARCH 03-26-13		
CH	CALL	TYPE	ANT	AZI	DIST	LAT	PWR(kW)	INT(km)	PRO(km)	*IN*	*OUT*
CITY	STATE			<--	FILE #	LNG	HAAT(M)	COR(M)	LICENSEE	(Overlap in km)	
258C0	KNGT	LIC NCX		281.2	34.90	30 17 26.0	100.000	11.1	76.8	10.4	-43.0*<
Lake Charles	LA			101.0	BLH20100923AGD	93 34 35.0	357	363	Townsquare Media Lake Char		
263D	649423	APP_C		67.5	1.61	30 14 09.0	0.250	1.1	13.2	-13.0*<	-12.7*<
Lake Charles	LA			247.5	BNPFT20030317LXE	93 12 15.0	105	106	Black Media Works, Inc.		
262C0	KRRV-FM	LIC_C_		37.4	112.59	31 01 59.0	100.000	107.1	73.8	-8.0<	18.6
Alexandria	LA			217.7	BMLH20060510ABB	92 30 08.0	321	355	Cenla Broadcasting Licensi		
260C	KTDY	LIC_CN		91.0	138.64	30 12 06.0	100.000	105.6	72.8	19.5	45.6
Lafayette	LA			271.7	BLH19980323KF	91 46 37.0	300	306	Townsquare Media Of Lafaye		
264C	KKHT-FM	LIC_CX		261.3	127.25	30 03 05.0	100.000	13.7	91.8	100.1	34.3
Lumberton	TX			80.7	BLH20111020ACS	94 31 37.0	595	609	Salem Media Of Illinois, L		
260C2	KSHN	LIC_CY		261.3	127.25	30 03 05.0	26.500	77.7	52.6	36.1	54.4
Liberty	TX			80.7	BLH19911001KD	94 31 37.0	207	221	Trinity River Valley Broad		
208C2	KITA	LIC_VX		94.6	56.66	30 11 17.0	19.000	13.7	92.0	14.5R	42.2M
Iota	LA			274.9	BMLED20081014ADM	92 37 55.0	132	134	Educational Media Foundati		
261C2	KYBI	LIC_CX		311.9	185.07	31 20 05.0	20.000	127.7	51.9	43.9	87.1
Lufkin	TX			131.2	BLH20080305ABF	94 40 10.0	240	319	Kasa Family Limited Partne		
262C	KILT-FM	LIC_C_		252.3	232.40	29 34 34.0	100.000	136.0	91.4	82.9	120.7
Houston	TX			71.2	BMLH20060127AEX	95 30 36.0	585	605	Cbs Radio Texas Inc.		
260D	K260AS	LIC_C_		318.5	110.87	30 58 31.0	0.040	7.6	5.4	89.8	85.2
Jasper	TX			138.1	BLFT20070629CCJ	93 59 24.0	42	125	Gerald R. Proctor		
264C	WTGE	LIC_CY		86.2	186.86	30 19 35.0	100.000	12.2	84.1	161.1	101.7
Baton Rouge	LA			267.2	BLH19910114KC	91 16 36.0	457	459	Guaranty Broadcasting Comp		
260A	KTEZ	LIC_CX		351.0	160.36	31 39 17.0	6.000	44.3	28.7	102.8	111.8
Zwolle	LA			170.9	BLH20020712ABL	93 29 04.0	100	187	Baldrige-dumas Communi cat		
264C	WTGE	CP_CY		85.0	193.21	30 21 58.0	100.000	12.3	84.5	167.4	107.6
Baton Rouge	LA			266.0	BPH20121101ADK	91 12 47.0	459	465	Guaranty Broadcasting Comp		
207C3	KAVK	LIC_CX		352.5	146.31	31 32 05.0	12.000	13.7	92.0	11.5R	134.8M
Many	LA			172.3	BLED20020628AAG	93 25 21.0	130	224	American Family Associatio		
264C3	KZBL	LIC NCX		6.0	176.03	31 48 17.0	25.000	3.9	37.5	158.9	137.4
Natchitoches	LA			186.1	BLH20020415AAN	93 01 27.0	84	121	Baldrige-dumas Communi cat		
261C2	KRVV	LIC_CN		24.1	298.22	32 40 20.0	50.000	137.5	52.0	147.5	200.7
Bastrop	LA			204.8	BLH19900611KD	91 55 06.0	150	171	Holiday Broadcasting Of L		
208C3	KAEC	CP_DCX		39.3	159.44	31 20 06.0	17.000	13.7	92.0	11.5R	147.9M
Alexandria	LA			219.9	BNPED20071019AWC	92 09 19.0	95	110	Enterprise Corporation Of		

Terrain database is NGDC 30 SEC , R= 73.215 qualifying spacings or FCC minimum spacings in KM, M= Margin in KM
 Contour distances are on direct line to and from reference station. Reference zone= West Zone, Co to 3rd adjacent.
 All separation margins (if shown) include rounding
 Ant Column: (D= DA Standard, Z= DA 73.215, N= Not DA 73.215, _= Omni), Polarization (C,H,V,E), Beamtilt(Y,N,X)
 ""affixed to 'IN' or 'OUT' values = site inside protected contour.
 < = Station meets FCC minimum distance spacing for its class.
 < = Contour Overlap

Blue Highlighted Text denotes the BNPFT-20030317LXE - Lake Charles, LA, facility to be modified by this Form 349 filing.
 This facility need not be protected.

Yellow highlighted text denotes a §74.1204(d) Third Adjacent Channel Given Interference Waiver Request toward KNGT(FM) - Lake Charles, LA (CH258C0) as included in **Exhibit(s) 13.6** and **13.7**. Full protection will be afforded the facility as the proposed interference area will not reach the ground nor publicly accessible floors of the roof/building based tower when taking into account the vertical radiation pattern of the proposed antenna.

Exhibit 13.6

§74.1204(d) 3rd Adjacent Channel

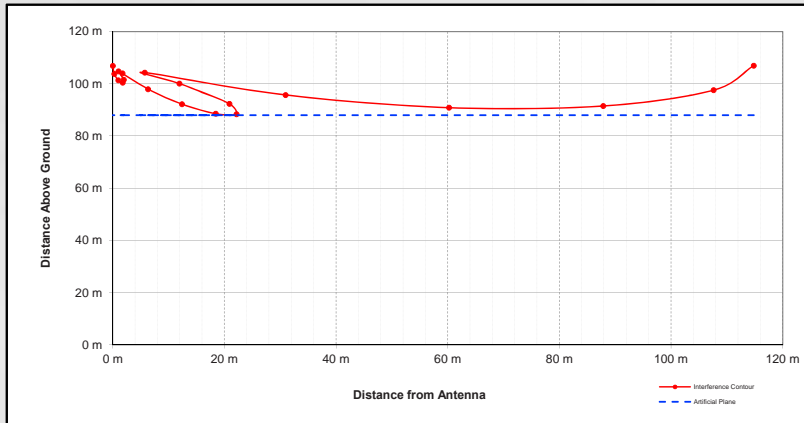
Given Interference Waiver Request

Study Toward KNGT(FM)- Lake Charles, LA

Terrain
0 28 m

NGDC 30 SEC Terrain Database
U.S. Census 2010 PL Database

KNGT(FM)
+



Proposed Antenna: 3 Bay PSI FML-3ODD Three-quarter Spaced								
Proposed Power: 0.25 kW								
Antenna Height AGL: 107 meters								
Interference Contour: 119.7 dBu f(50:10)								
Artificial Ground Plane Height: 88 meters								
Distance (Free Space) Equation: $= (10^4 \times (106.92 - [\text{desired dBu}] + [\text{ERP in dBk}] / 20)) \times 1000$								
Field Strength (dBu) Equation: $= 106.92 - (20 \times (\text{LOG10}(\text{DistMeters} / 1000))) + [\text{ERP in dBk}]$								
Depression Angle Below Horizon	Antenna Relative Field	ERP in kW	ERP in dBk	Distance from Ant. to Interference Contour	Distance from Ant. to Artificial Plane	Field Strength in dBu @ Artificial Plane	Distance from Ant. to Ground Level	Field Strength in dBu @ Ground Level
0°	1.000	0.250	-6.02	114.81 m	infinite	---	---	---
-5°	0.941	0.221	-6.55	108.03 m	218.00 m	113.60 dBu	1227.69 m	98.59 dBu
-10°	0.777	0.151	-8.21	89.21 m	109.42 m	117.93 dBu	616.19 m	102.91 dBu
-15°	0.543	0.074	-11.32	62.34 m	73.41 m	118.28 dBu	413.42 m	103.27 dBu
-20°	0.287	0.021	-16.86	32.95 m	55.55 m	115.16 dBu	312.85 m	100.15 dBu
-25°	0.055	0.001	-31.21	6.31 m	44.96 m	102.65 dBu	253.18 m	87.64 dBu
-30°	0.120	0.004	-24.44	13.78 m	38.00 m	110.89 dBu	214.00 m	95.87 dBu
-35°	0.222	0.012	-19.09	25.49 m	33.13 m	117.42 dBu	186.55 m	102.41 dBu
-40°	0.252	0.016	-17.99	28.93 m	29.56 m	119.51 dBu	166.46 m	104.50 dBu
-45°	0.227	0.013	-18.90	26.06 m	26.87 m	119.43 dBu	151.32 m	104.42 dBu
-50°	0.168	0.007	-21.51	19.29 m	24.80 m	117.52 dBu	139.68 m	102.50 dBu
-55°	0.096	0.002	-26.38	11.02 m	23.19 m	113.24 dBu	130.62 m	98.22 dBu
-60°	0.030	0.000	-36.48	3.44 m	21.94 m	103.62 dBu	123.55 m	88.60 dBu
-65°	0.021	0.000	-39.58	2.41 m	20.96 m	100.91 dBu	118.06 m	85.90 dBu
-70°	0.050	0.001	-32.04	5.74 m	20.22 m	108.76 dBu	113.87 m	93.75 dBu
-75°	0.059	0.001	-30.60	6.77 m	19.67 m	110.44 dBu	110.77 m	95.43 dBu
-80°	0.050	0.001	-32.04	5.74 m	19.29 m	109.17 dBu	108.65 m	94.16 dBu
-85°	0.028	0.000	-37.08	3.21 m	19.07 m	104.23 dBu	107.41 m	89.22 dBu
-90°	0.001	0.000	-66.02	0.11 m	19.00 m	75.32 dBu	107.00 m	60.31 dBu

The Interference Contour corresponding to the KNGT(FM) - Lake Charles, NY Protected Contour at the proposed Translator site has been calculated to be no less than the 119.7 dBu F(50:10) Interference Contour corresponding to the worst case KNGT(FM) 79.7 dBu F(50:50) Protected Contour. This represents the proposed interference contour which falls wholly within the 40:1 dBu ratio. As seen on the map and associated vertical protection study, full protection will be afforded KNGT(FM) as the calculated interference area will not reach the ground nor a 88 meter artificial plane representing the top publicly accessible floor of the 96 meter (315 foot) rooftop antenna mounted building when taking into account the downward radiation characteristics of the antenna as supplied by the antenna manufacturer. A copy of the antenna manufacturer's vertical radiation pattern has been included in **Exhibit 13.7**.

KNGT(FM)
Lake Charles, LA
BLH20100923AGD
Facility ID: 53643
Latitude: 30-17-26 N
Longitude: 093-34-35 W
ERP: 100.00 kW
Channel: 258C0
Frequency: 99.5 MHz
AMSL Height: 362.7 m
Horiz. Pattern: Omni

APP261D.long-form
Lake Charles, LA
Proposed Operation
Facility ID: 156145
Latitude: 30-13-49 N
Longitude: 093-13-11 W
ERP: 0.25 kW
Channel: 261D
Frequency: 100.1 MHz
AMSL Height: 110.0 m
Horiz. Pattern: Omni

79.7 dBu F(50:50)

APP261D.long-form

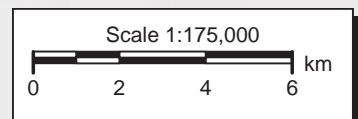


Exhibit 13.7 - Manufacturer's Vertical Radiation Pattern Data

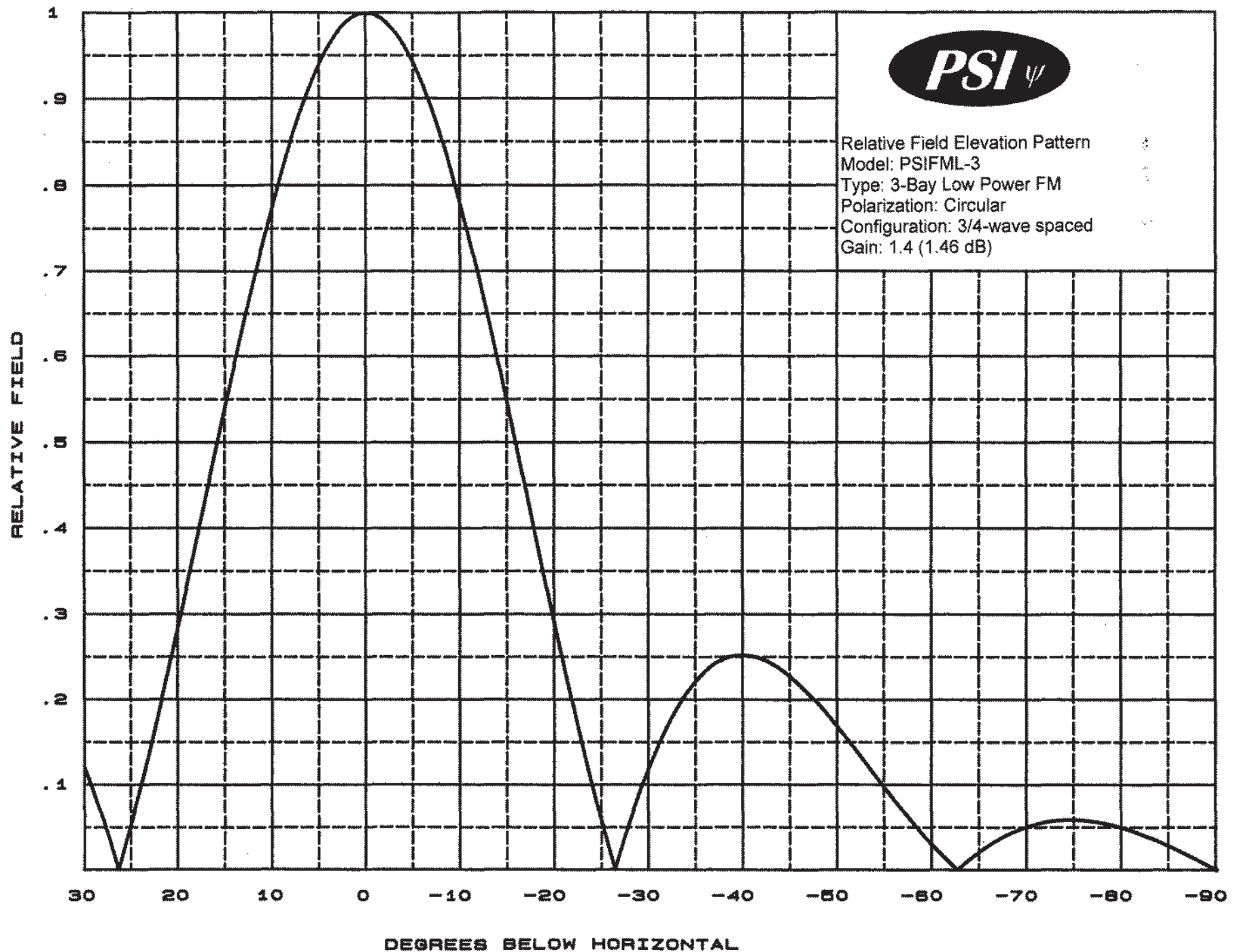


Exhibit 13.7 - Manufacturer's Vertical Radiation Pattern Data



Propagation Systems Inc.

Elevation Pattern Tabulation

Antenna: PSIFML-3 Special

Bay spacing: 3/4 wave

Angle	Field	dB	Angle	Field	dB	Angle	Field	dB
-90.00	0.001	-60.000	-50.00	0.168	-15.500	-10.00	0.777	-2.194
-89.00	0.006	-44.795	-49.00	0.181	-14.829	-9.00	0.817	-1.761
-88.00	0.012	-38.775	-48.00	0.194	-14.240	-8.00	0.853	-1.379
-87.00	0.017	-35.329	-47.00	0.206	-13.714	-7.00	0.886	-1.049
-86.00	0.023	-32.869	-46.00	0.217	-13.266	-6.00	0.916	-0.766
-85.00	0.028	-31.047	-45.00	0.227	-12.881	-5.00	0.941	-0.529
-84.00	0.033	-29.622	-44.00	0.235	-12.562	-4.00	0.962	-0.338
-83.00	0.038	-28.467	-43.00	0.242	-12.308	-3.00	0.978	-0.190
-82.00	0.042	-27.510	-42.00	0.248	-12.126	-2.00	0.990	-0.085
-81.00	0.046	-26.705	-41.00	0.251	-12.010	-1.00	0.998	-0.021
-80.00	0.050	-26.073	-40.00	0.252	-11.968	0.00	1.000	0.000
-79.00	0.053	-25.559	-39.00	0.251	-12.004	1.00	0.998	-0.021
-78.00	0.055	-25.169	-38.00	0.248	-12.126	2.00	0.990	-0.085
-77.00	0.057	-24.887	-37.00	0.242	-12.336	3.00	0.978	-0.190
-76.00	0.058	-24.682	-36.00	0.233	-12.657	4.00	0.962	-0.338
-75.00	0.059	-24.614	-35.00	0.222	-13.092	5.00	0.941	-0.529
-74.00	0.059	-24.637	-34.00	0.207	-13.676	6.00	0.916	-0.766
-73.00	0.058	-24.772	-33.00	0.190	-14.432	7.00	0.886	-1.049
-72.00	0.056	-25.027	-32.00	0.170	-15.414	8.00	0.853	-1.379
-71.00	0.054	-25.411	-31.00	0.146	-16.700	9.00	0.817	-1.759
-70.00	0.050	-25.968	-30.00	0.120	-18.427	10.00	0.777	-2.194
-69.00	0.046	-26.733	-29.00	0.090	-20.871	11.00	0.734	-2.683
-68.00	0.041	-27.731	-28.00	0.058	-24.704	12.00	0.689	-3.233
-67.00	0.035	-29.081	-27.00	0.023	-32.754	13.00	0.642	-3.848
-66.00	0.028	-30.954	-26.00	0.015	-36.745	14.00	0.593	-4.534
-65.00	0.021	-33.656	-25.00	0.055	-25.217	15.00	0.543	-5.301
-64.00	0.012	-38.221	-24.00	0.098	-20.213	16.00	0.492	-6.156
-63.00	0.003	-50.816	-23.00	0.142	-16.928	17.00	0.441	-7.116
-62.00	0.007	-42.949	-22.00	0.189	-14.460	18.00	0.389	-8.196
-61.00	0.018	-34.880	-21.00	0.238	-12.484	19.00	0.338	-9.425
-60.00	0.030	-30.546	-20.00	0.287	-10.839	20.00	0.287	-10.834
-59.00	0.042	-27.541	-19.00	0.338	-9.425	21.00	0.238	-12.484
-58.00	0.055	-25.217	-18.00	0.389	-8.199	22.00	0.189	-14.460
-57.00	0.068	-23.307	-17.00	0.441	-7.116	23.00	0.143	-16.919
-56.00	0.082	-21.711	-16.00	0.492	-6.159	24.00	0.098	-20.200
-55.00	0.096	-20.335	-15.00	0.543	-5.301	25.00	0.055	-25.193
-54.00	0.111	-19.124	-14.00	0.593	-4.536	26.00	0.015	-36.745
-53.00	0.125	-18.051	-13.00	0.642	-3.850	27.00	0.023	-32.754
-52.00	0.140	-17.106	-12.00	0.689	-3.234	28.00	0.058	-24.704
-51.00	0.154	-16.253	-11.00	0.734	-2.683	29.00	0.090	-20.871
						30.00	0.120	-18.438