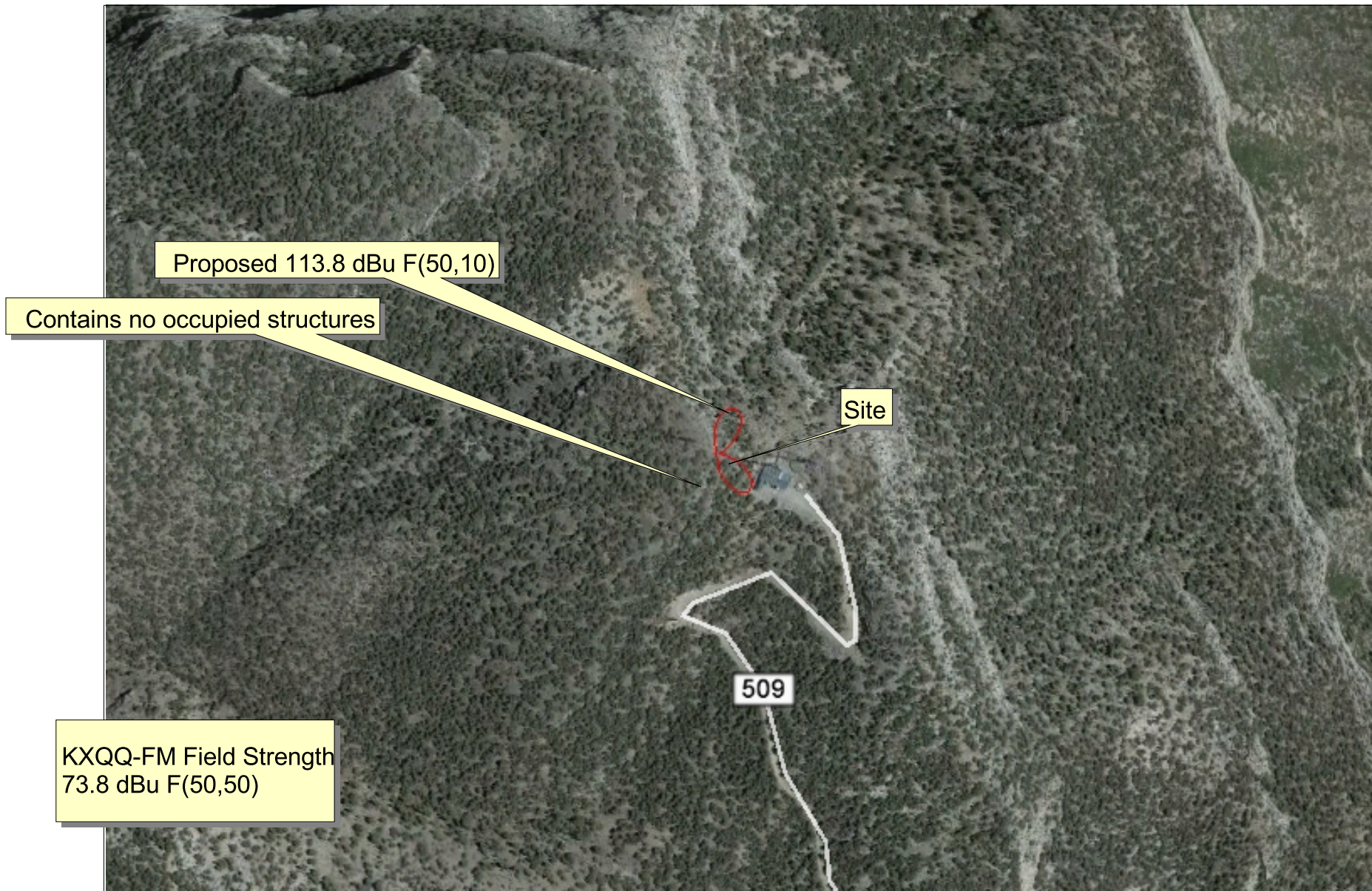


**Table 1****K267BZ, AMENDMENT TO APPLICATION: Proposed Channel 265****Channel Study**

Chan	Class	Call Letters	Type	Status	City	State	Country	Owner	Distance (km)	Bearing TO (deg)	Req. Dist. (km)	Clearance (km)	Field Strength (dBu)
263	C	KXQQ-FM	FM	LIC	HENDERSON	NV	US	CBS RADIO STATIONS INC.	45.0	83.7	75.5	-30.5	73.8 (see note and Figure 2)
265	D	K265EZ	FX	CP MOD	HENDERSON	NV	US	LOTUS BROADCASTING CORP.	45.0	83.8	48.1	-3.2	38.4 (only received interference)
265	D	K265EZ	FX	LIC	HENDERSON	NV	US	LOTUS BROADCASTING CORP.	45.0	83.8	22.7	22.2	38.4
265	D	K265CJ	FX	CP	LAUGHLIN	NV	US	SMOKE AND MIRRORS, LLC	104.4	139.2	62.9	41.5	1.1
265	D	K265CJ	FX	LIC	LAUGHLIN	NV	US	SMOKE AND MIRRORS, LLC	104.4	139.2	61.8	42.6	1.0
266	L1	KVXL-LP	FL	LIC	LAS VEGAS	NV	US	LIBERTY BAPTIST CHURCH OF L	35.0	42.9	25.9	9.1	27.7
267	D	K267BZ	FX	LIC	HALLORAN SPRINGS	CA	US	ONDAS DE VIDA, INC.	42.7	151.2	28.6	14.1	52.7
268	D	K268CS	FX	LIC	LAS VEGAS	NV	US	SOUTHERN NEVADA EDUCATIO	41.3	92.9	15.7	25.6	43.0
268	B	KIXF	FM	LIC	BAKER	CA	US	KHWY, INC.	70.1	213.1	48.2	21.9	43.8

**NOTE: (SEE FIGURE 2)**

(with respect to KXQQ-FM) 2nd adjacent KXQQ-FM has a field strength of 73.8 dBu F(50,50) at the proposed site. Therefore the proposed translator's interfering contour is the 113.8 dBu F(50,10) contour. The proposed translator's 113.8 dBu F(50,10) extends 35 meters horizontally from the tower and does not contain any structures or population. Therefore this proposal is compliant with the allowance of Rule 74.1204(d).



**Figure 2**  
**K267BZ, HALLORAN SPRINGS, CA: (AMENDMENT) MINOR CHANGE TO A LICENSED FACILITY**  
**2nd adjacent channel study with respect to KXQQ-FM**