

TECHNICAL EXHIBIT
POST-TRANSITION STA REQUEST
STATION KICU-DT
SAN JOSE, CALIFORNIA
CH 36 500 KW (MAX-DA) 640 M

Technical Narrative

This Technical Exhibit supports a request for Special Temporary Authority (STA) for digital television (DTV) station KICU-DT at San Jose, California. This STA requests post-transition digital television STA operation on channel 36 at San Jose with a directional effective radiated power of 500 kilowatts.¹

Proposed Facilities

Station KICU-DT proposes to operate DTV STA channel 36 from its DTV transmitter site. The antenna height above average terrain for the channel 36 DTV STA operation is 640 meters.

The proposed DTV transmitter site will be located at its analog transmitter site. Therefore, the proposed site location is:

37° 29' 17" North Latitude
121° 51' 59" West Longitude

A sketch of antenna and pertinent elevations are included as Figure 1.

¹ This STA request is for a facility similar to that proposed in an auxiliary application for construction permit, BXPCDT-20080812AAC.

Figure 2 is a map showing the DTV predicted coverage contours for both the herein proposed STA and its Appendix B allotment. As can be seen, the proposed STA noise-limited contour is entirely encompassed by its proposed maximization application. The extent of the contour has been calculated using the normal FCC prediction method. The San Jose city limits were derived from information contained in the 2000 U.S. Census of Population and Housing.

Population Served

The herein proposed KICU-DT facility is predicted to serve 6,351,000 persons, post-transition based upon the 2000 Census. KICU-TV's associated analog facility is predicted to serve 5,698,357 persons. KICU-DT's associated Appendix B facility is predicted to serve 6,601,000 persons. KICU-DT's current Channel 52 digital operation is predicted to serve 6,230,000 persons. Therefore, the herein proposed KICU-DT STA facility would serve 96.2% of the KICU-DT's Appendix B population and over 100% of its analog and current digital population.

Radiofrequency Electromagnetic Field Exposure

The proposed KICU-DT facilities were evaluated in terms of potential radiofrequency electromagnetic field exposure at ground level to workers and the general public. The radiation center for the proposed KICU-DT STA antenna is located 129 meters above ground level. The maximum effective radiated power is 500 kilowatts. A "worst-case"

relative field value of 0.1 is assumed for the antenna's downward radiation. The calculated power density at a point 2 meters above ground level is less than 0.015 mW/cm². This is less than 5 percent of the Commission's recommended limit of 0.40 mW/cm² for channel 36 for an "uncontrolled" environment.

Access to the transmitting site will be restricted and appropriately marked with warning signs. As this is a multi-user site, an agreement will control access to the site. In the event that workers or other authorized personnel enter restricted areas or climb the tower, appropriate measures will be taken to assure worker safety with respect to radio frequency radiation exposure. Such measures include reducing the average exposure by spreading out the work over a longer period of time, wearing "accepted" RFR protective clothing and/or RFR exposure monitors or scheduling work when the stations are at reduced power or shut down. The proposed KICU-DT operation appears to be otherwise categorically excluded from environmental processing.

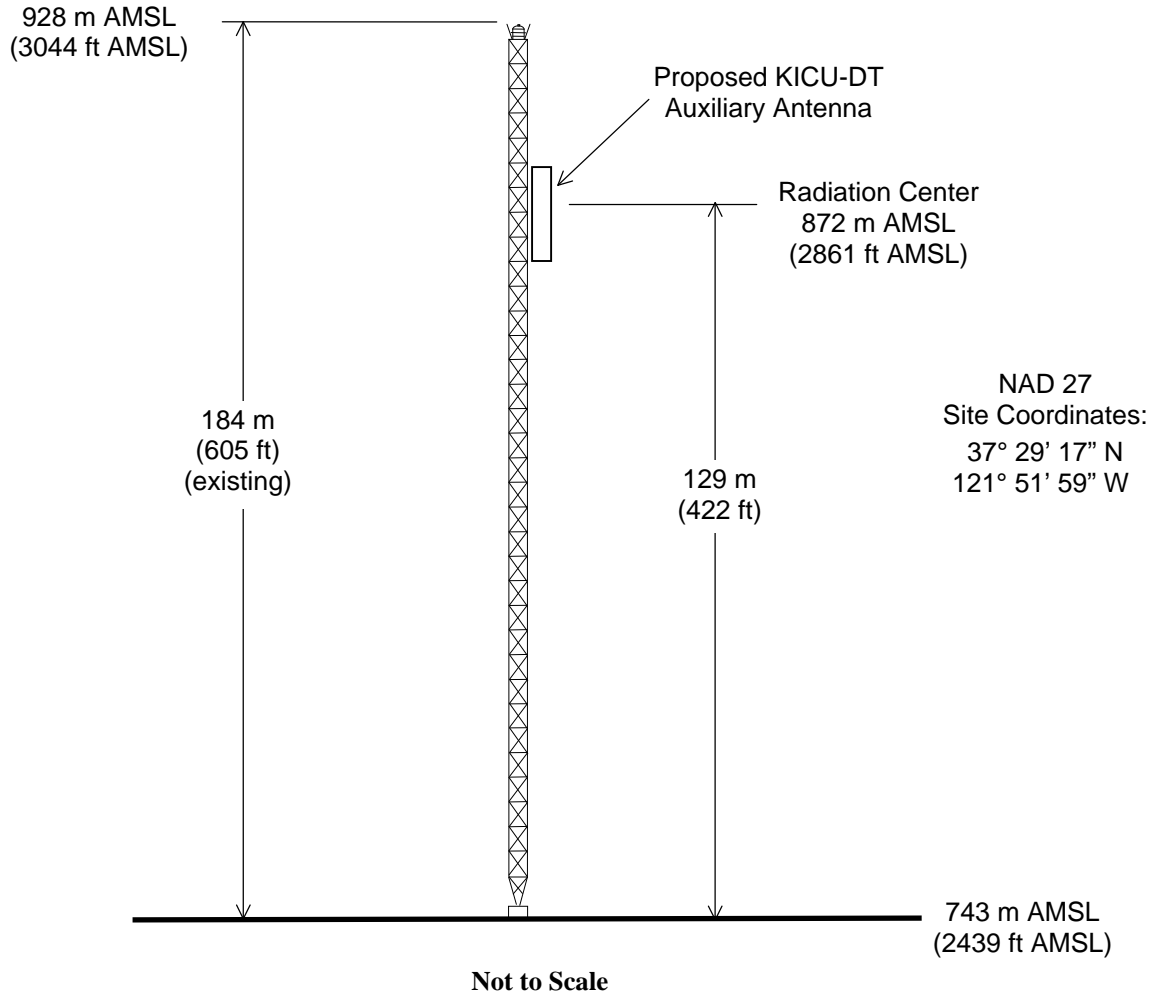
It is noted that this statement only addresses the potential for radiofrequency electromagnetic field exposure. All other aspects of the environmental processing analysis will be or already have been provided to the FCC by the tower owner.

Charles Cooper

du Treil, Lundin & Rackley, Inc.
201 Fletcher Avenue
Sarasota, Florida 32437



ASR: 1019291



ANTENNA AND SUPPORTING STRUCTURE

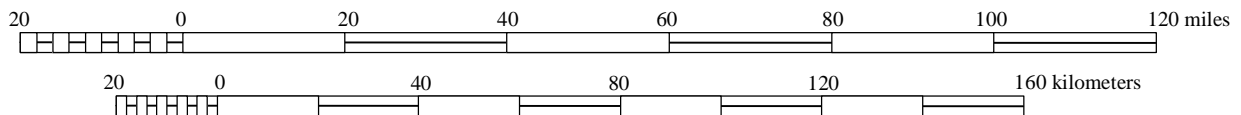
DTV STATION KICU-DT – AUXILIARY FACILITY

SAN JOSE, CALIFORNIA

CH 36 500 KW (MAX-DA) 640 M

du Treil, Lundin & Rackley, Inc. Sarasota, Florida

Figure 2



PREDICTED COVERAGE CONTOURS

STATION KICU-DT - PROPOSED STA

SAN JOSE, CALIFORNIA

CH 36 500 KW-DA 640 M

du Treil, Lundin & Rackley, Inc Sarasota, Florida

TECHNICAL EXHIBIT
 POST-TRANSITION STA REQUEST
 STATION KICU-DT
 SAN JOSE, CALIFORNIA
 CH 36 500 KW (MAX-DA) 640 M

Post-Transition OET-69 Interference Analysis

TW Census data selected 2000
 Post Transition Data Base Selected /export/home/cdb/pt_tvdb.sff

TV INTERFERENCE and SPACING ANALYSIS PROGRAM

Date: 12-18-2008 Time: 09:27:50

Record Selected for Analysis

KICU USERRECORD-01 SAN JOSE CA US
 Channel 36 ERP 500. kW HAAT 646. m RCAMSL 00872 m
 Latitude 037-29-17 Longitude 0121-51-59
 Status APP Zone 2 Border
 Dir Antenna Make CDB Model 0000000090463 Beam tilt N Ref Azimuth 0.
 Last update Cutoff date Docket
 Comments
 Applicant

Cell Size for Service Analysis 2.0 km/side

Distance Increments for Longley-Rice Analysis 1.00 km

Facility does not meet maximum height/power limits
 Channel 36 ERP = 500.00 HAAT = 646.

Azimuth (Deg)	ERP (kW)	HAAT (m)	41.0 dBu F(50,90) (km)
0.0	66.613	684.8	99.8
45.0	29.040	483.4	83.3
90.0	66.613	274.8	74.0
135.0	436.645	404.6	98.8
180.0	444.799	812.7	122.3
225.0	397.157	860.6	122.9
270.0	441.675	858.8	123.9
315.0	433.066	786.6	121.1

Evaluation toward Class A Stations

Contour overlap to Class A station
 KAXT-CA 22 SANTA CLARA-SAN JOSE CA BLTTA 20031010AAT

Class A Evaluation Complete

SPACING VIOLATION FOUND BETWEEN STATION

KICU 36 SAN JOSE CA USERRECORD01

and station

SHORT TO: KSPX 29 SACRAMENTO CA BPCT 20031002AEJ
 038-15-54 0121-29-24
 Req. separation => 24.1 <= 96.6 Actual separation 92.4 Short 4.2(68.3) km

Figure 3

SHORT TO: KMTP-TV 32 SAN FRANCISCO CA BLET 19910910KE
 037-45-20 0122-27- 5
 Req. separation => 24.1 <= 96.6 Actual separation 59.6 Short 37.0(35.5) km

SHORT TO: KCRA-TV 35 SACRAMENTO CA BLCDT 20040122ADR
 038-14-50 0121-30- 3
 Req. separation => 24.0 <= 110.0 Actual separation 90.2 Short 19.8(66.2) km

SHORT TO: KCRA-TV 35 SACRAMENTO CA DTVPLN DTVPl280
 38 -15-54 121 -29-24
 Req. separation => 24.0 <= 110.0 Actual separation 92.4 Short 17.6(68.4) km

SHORT TO: KCRA-TV 35 SACRAMENTO CA BPCDT 20080208AEM
 038-15-54 0121-29-24
 Req. separation => 24.0 <= 110.0 Actual separation 92.4 Short 17.6(68.4) km

SHORT TO: KCBA 35 SALINAS CA BLCT 19811022KE
 036-45-22 0121-30- 5
 Req. separation => 12.0 <= 106.0 Actual separation 87.5 Short 18.5(75.5) km

SHORT TO: KICU-TV 36 SAN JOSE CA DTVPLN DTVPl318
 37 -29-17 121 -51-59
 Req. separation 223.7 Actual separation 0.0 Short 223.7 km

SHORT TO: KICU-TV 36 SAN JOSE CA BLCT 19881116KE
 037-29-17 0121-51-59
 Req. separation 244.6 Actual separation 0.0 Short 244.6 km

SHORT TO: KFRE-TV 36 SANGER CA BLCDT 20060421AAI
 037-04-37 0119-26- 1
 Req. separation 223.7 Actual separation 220.5 Short 3.2 km

SHORT TO: KFRE-TV 36 SANGER CA DTVPLN DTVPl319
 37 -04-37 119 -26-01
 Req. separation 223.7 Actual separation 220.5 Short 3.2 km

SHORT TO: KCNS 38 SAN FRANCISCO CA BMLCT 19980916KE
 037-45-20 0122-27- 5
 Req. separation => 24.1 <= 96.6 Actual separation 59.6 Short 37.0(35.5) km

SHORT TO: KTXL 40 SACRAMENTO CA BLCT 19851112KI
 038-16-18 0121-30-18
 Req. separation => 24.1 <= 96.6 Actual separation 92.6 Short 4.0(68.5) km

SHORT TO: KBCW 44 SAN FRANCISCO CA BLCT 19881220KG
 037-45-20 0122-27- 5
 Req. separation => 24.1 <= 96.6 Actual separation 59.6 Short 37.0(35.5) km

LANDMOBILE SPACING VIOLATIONS FOUND

NONE

Proposed facility OK to FCC Monitoring Stations

Proposed facility OK toward West Virginia quiet zone

Proposed facility OK toward Table Mountain

Proposed facility is beyond the Canadian coordination distance

Proposed facility is beyond the Mexican coordination distance

Proposed station is OK toward AM broadcast stations

Start of Interference Analysis

Figure 3

Channel	Proposed Station Call	City/State	ARN
36	KICU	SAN JOSE CA	USERRECORD01

Stations Potentially Affected by Proposed Station

Chan	Call	City/State	Dist(km)	Status	Application	Ref. No.
22	KAXT-CA	SANTA CLARA-SAN JOSE CA	20.8	LIC	BLTTA	-20031010AAT
28	KFTL-CA	SAN FRANCISCO, ETC. CA	54.7	LIC	BLTTA	-20050105ACB
28	KDTV-CA	SANTA ROSA CA	145.4	LIC	BLTTA	-20030212AAT
33	KDJT-CA	SALINAS CA	87.5	APP	BPTTA	-20080804ABR
33	KDJT-CA	SALINAS-MONTEREY, ET CA	50.7	LIC	BLTTL	-19931014JE
33	KDJT-CA	SALINAS/MONTEREY,ETC CA	87.5	APP	BSTA	-20061120ABM
33	KDJT-CA	SALINAS/MONTEREY,ETC CA	87.5	APP	BSTA	-20060822AIZ
35	KCRA-TV	SACRAMENTO CA	90.3	LIC	BLCDT	-20040122ADR
35	KCRA-TV	SACRAMENTO CA	92.5	PLN	DTVPLN	-DTVP1280
35	KCRA-TV	SACRAMENTO CA	92.5	CP	BPCDT	-20080208AEM
36	KJCN-LP	PASO ROBLES CA	260.1	LIC	BLTTL	-19870602IA
36	KFRE-TV	SANGER CA	219.9	LIC	BLCDT	-20060421AAI
36	KFRE-TV	SANGER CA	219.9	PLN	DTVPLN	-DTVP1319

%%%

Analysis of Interference to Affected Station 1

Analysis of current record

Channel	Call	City/State	Application	Ref. No.
22	KAXT-CA	SANTA CLARA-SAN JOSE CA	BLTTA	-20031010AAT

Stations Potentially Affecting This Station

Chan	Call	City/State	Dist(km)	Status	Application	Ref. No.
14	KTNC-TV	CONCORD CA	63.7	CP MOD	BMPCDT	-20080222ABB
14	KTNC-TV	CONCORD CA	63.7	PLN	DTVPLN	-DTVP0491
15	KBSV	CERES CA	39.5	APP	BMPEDT	-20081002ABR
15	KBSV	CERES CA	50.4	PLN	DTVPLN	-DTVP0517
15	KBSV	CERES CA	39.7	CP MOD	BMPEDT	-20080716AGS
18	KUVS-TV	MODESTO CA	126.6	PLN	DTVPLN	-DTVP0631
18	KUVS-TV	MODESTO CA	126.6	LIC	BLCDT	-20020906ABH
19	KBWB	SAN FRANCISCO CA	78.0	PLN	DTVPLN	-DTVP0666
19	KUVS-TV	MODESTO CA	126.6	LIC	BLCT	-20011012ABT
19	KOFY-TV	SAN FRANCISCO CA	78.0	CP	BPCDT	-20080619ADG
19	KOFY-TV	SAN FRANCISCO CA	78.0	LIC	BLCDT	-20000421ABF
20	KOFY-TV	SAN FRANCISCO CA	78.0	LIC	BLCT	-19851206KM
21	KMAX-TV	SACRAMENTO CA	104.3	CP	BPCDT	-20080620ABK
21	KMAX-TV	SACRAMENTO CA	107.2	PLN	DTVPLN	-DTVP0751
21	KMAX-TV	SACRAMENTO CA	107.2	LIC	BLCDT	-20041018ABT
22	KRCB	COTATI CA	135.0	LIC	BLET	-20070905AAG
22	KZMM-CA	FRESNO CA	207.6	LIC	BLTTA	-20050525ARK
22	K22FR	SACRAMENTO CA	154.5	LIC	BLTT	-20061204ADU
22	KMBY-LP	SOLEDAD CA	145.0	LIC	BLTTL	-20080626AAU
22	KMBY-LP	SOLEDAD CA	88.4	APP	BPTTL	-20081125AVG
22	KDTS-LP	STOCKTON CA	64.6	APP	BDISTTL	-20061121AKD
23	KBSV	CERES CA	76.4	LIC	BLET	-19960319KE
23	KMUV-LP	MONTEREY CA	66.9	LIC	BLTTL	-20070402KPQ
25	KOVR	STOCKTON CA	104.3	CP	BPCDT	-20080620ABM
25	KOVR	STOCKTON CA	104.3	PLN	DTVPLN	-DTVP0915
25	KOVR	STOCKTON CA	104.3	LIC	BLCDT	-20050516ANE
25	KQET	WATSONVILLE CA	66.9	PLN	DTVPLN	-DTVP0916
25	KQET	WATSONVILLE CA	66.9	APP	BFRCT	-20050811AAH
25	KQET	WATSONVILLE CA	66.9	CP	BPEDT	-20080314ACH
25	KQET	WATSONVILLE CA	66.9	CP	BPET	-20040803ACB
26	KTSF	SAN FRANCISCO CA	72.3	LIC	BLCT	-2507
26	KTFK-TV	STOCKTON CA	104.3	CP MOD	BMPCDT	-20080616ACI
26	KTFK-TV	STOCKTON CA	104.3	PLN	DTVPLN	-DTVP0947
29	KPIX-TV	SAN FRANCISCO CA	78.0	LIC	BLCDT	-19990301KF
29	KPIX-TV	SAN FRANCISCO CA	78.0	PLN	DTVPLN	-DTVP1065
29	KPIX-TV	SAN FRANCISCO CA	78.0	CP MOD	BMPCDT	-20080603AAG
30	KQED	SAN FRANCISCO CA	78.0	LIC	BLEDT	-20000601ADY
30	KQED	SAN FRANCISCO CA	78.0	PLN	DTVPLN	-DTVP1102
30	KQED	SAN FRANCISCO CA	78.0	CP	BPEDT	-20080314ACI
36	KICU-TV	SAN JOSE CA	20.8	PLN	DTVPLN	-DTVP1318
36	KICU-TV	SAN JOSE CA	20.8	LIC	BLCT	-19881116KE
36	KICU	SAN JOSE CA	20.8	APP	USERRECORD-01	

Proposal causes no interference

Figure 3

#####

Analysis of Interference to Affected Station 2

Analysis of current record

Channel	Call	City/State	Application	Ref. No.
28	KFTL-CA	SAN FRANCISCO, ETC. CA	BLTTA	-20050105ACB

Stations Potentially Affecting This Station

Chan	Call	City/State	Dist(km)	Status	Application	Ref. No.
21	KMAX-TV	SACRAMENTO CA	102.2	CP	BPCDT	-20080620ABK
21	KMAX-TV	SACRAMENTO CA	104.7	PLN	DTVPLN	-DTVP0751
21	KMAX-TV	SACRAMENTO CA	104.7	LIC	BLCDDT	-20041018ABT
25	KOVR	STOCKTON CA	102.2	CP	BPCDT	-20080620ABM
25	KOVR	STOCKTON CA	102.2	PLN	DTVPLN	-DTVP0915
25	KOVR	STOCKTON CA	102.2	LIC	BLCDDT	-20050516ANE
25	KQET	WATSONVILLE CA	132.4	PLN	DTVPLN	-DTVP0916
25	KQET	WATSONVILLE CA	132.4	APP	BFRCDT	-20050811AAH
25	KQET	WATSONVILLE CA	132.4	CP	BPEDT	-20080314ACH
25	KQET	WATSONVILLE CA	132.4	CP	BPET	-20040803ACB
26	KTSF	SAN FRANCISCO CA	0.1	LIC	BLCT	-2507
26	KTFK-TV	STOCKTON CA	102.2	CP MOD	BMPCDT	-20080616ACI
26	KTFK-TV	STOCKTON CA	102.2	PLN	DTVPLN	-DTVP0947
27	KTSF	SAN FRANCISCO CA	0.1	CP	BPCDT	-20080620ALV
27	KTSF	SAN FRANCISCO CA	0.1	PLN	DTVPLN	-DTVP0987
27	KTSF	SAN FRANCISCO CA	0.1	LIC	BLCDDT	-20050131AOD
28	KKPM-CA	CHICO CA	177.0	LIC	BLTTA	-20040805ABM
28	KBVU	EUREKA CA	362.9	CP MOD	BMPCDT	-20051220AIY
28	KBVU	EUREKA CA	362.9	PLN	DTVPLN	-DTVP1027
28	KDTV-CA	SANTA ROSA CA	108.9	LIC	BLTTA	-20030212AAT
28	KMMW-LP	STOCKTON CA	157.4	CP	BDISTTL	-20060403AOS
28	KMPH-TV	VISALIA CA	334.6	LIC	BLCDDT	-20030204AGN
28	KMPH-TV	VISALIA CA	334.6	PLN	DTVPLN	-DTVP1029
29	KSPX	SACRAMENTO CA	104.7	APP	BPCT	-20031002AEJ
29	KPIX-TV	SAN FRANCISCO CA	7.7	LIC	BLCDDT	-19990301KF
29	KPIX-TV	SAN FRANCISCO CA	7.7	PLN	DTVPLN	-DTVP1065
29	KPIX-TV	SAN FRANCISCO CA	7.7	CP MOD	BMPCDT	-20080603AAG
30	KQED	SAN FRANCISCO CA	7.7	LIC	BLEDT	-20000601ADY
30	KQED	SAN FRANCISCO CA	7.7	PLN	DTVPLN	-DTVP1102
30	KQED	SAN FRANCISCO CA	7.7	CP	BPEDT	-20080314ACI
31	KSMS-TV	MONTEREY CA	132.4	CP	BPCDT	-19991101AFU
31	KSMS-TV	MONTEREY CA	132.4	PLN	DTVPLN	-DTVP1131
31	KSMS-TV	MONTEREY CA	132.4	APP	BPCDT	-20081215ACX
31	KMAX-TV	SACRAMENTO CA	104.7	LIC	BLCT	-20021125AAK
32	KMTP-TV	SAN FRANCISCO CA	7.7	LIC	BLET	-19910910KE
32	KFTY	SANTA ROSA CA	110.5	CP	BPCDT	-20080313ACF
32	KFTY	SANTA ROSA CA	110.5	PLN	DTVPLN	-DTVP1173
35	KCRA-TV	SACRAMENTO CA	102.7	LIC	BLCDDT	-20040122ADR
35	KCRA-TV	SACRAMENTO CA	104.7	PLN	DTVPLN	-DTVP1280
35	KCRA-TV	SACRAMENTO CA	104.7	CP	BPCDT	-20080208AEM
36	KICU-TV	SAN JOSE CA	54.7	PLN	DTVPLN	-DTVP1318
42	KTNC-TV	CONCORD CA	52.3	LIC	BLCT	-19830630KF
43	NEW	SACRAMENTO CA	139.7	APP	BNPEDT	-20030922AFV
43	KCSM-TV	SAN MATEO CA	7.7	LIC	BLEDT	-20030822AFZ
43	KCSM-TV	SAN MATEO CA	7.7	PLN	DTVPLN	-DTVP1529
43	KCSM-TV	SAN MATEO CA	7.7	CP	BPEDT	-20080825AAV
36	KICU	SAN JOSE CA	54.7	APP	USERRECORD-01	

Proposal causes no interference

#####

Analysis of Interference to Affected Station 3

Analysis of current record

Channel	Call	City/State	Application	Ref. No.
28	KDTV-CA	SANTA ROSA CA	BLTTA	-20030212AAT

Stations Potentially Affecting This Station

Chan	Call	City/State	Dist(km)	Status	Application	Ref. No.
21	KMAX-TV	SACRAMENTO CA	107.5	CP	BPCDT	-20080620ABK
21	KMAX-TV	SACRAMENTO CA	107.1	PLN	DTVPLN	-DTVP0751
21	KMAX-TV	SACRAMENTO CA	107.1	LIC	BLCDDT	-20041018ABT
25	KOVR	STOCKTON CA	107.5	CP	BPCDT	-20080620ABM
25	KOVR	STOCKTON CA	107.5	PLN	DTVPLN	-DTVP0915

Figure 3

25	KOVR	STOCKTON CA	107.5	LIC	BLCDDT	-20050516ANE
26	KTFK-TV	STOCKTON CA	107.5	CP MOD	BMPCDDT	-20080616ACI
26	KTFK-TV	STOCKTON CA	107.5	PLN	DTVPLN	-DTVP0947
27	KTSF	SAN FRANCISCO CA	108.9	CP	BPCDDT	-20080620ALV
27	KTSF	SAN FRANCISCO CA	108.9	PLN	DTVPLN	-DTVP0987
27	KTSF	SAN FRANCISCO CA	108.9	LIC	BLCDDT	-20050131AOD
28	KKPM-CA	CHICO CA	92.0	CP	BDFCDDTA	-20081031ABI
28	KKPM-CA	CHICO CA	92.0	LIC	BLTTA	-20040805ABM
28	KBVU	EUREKA CA	257.8	CP MOD	BMPCDDT	-20051220AIY
28	KBVU	EUREKA CA	257.8	PLN	DTVPLN	-DTVP1027
28	KFTL-CA	SAN FRANCISCO, ETC. CA	108.9	LIC	BLTTA	-20050105ACB
28	KMMW-LP	STOCKTON CA	175.2	CP	BDISTTL	-20060403AOS
29	KSPX	SACRAMENTO CA	107.1	APP	BPCT	-20031002AEJ
29	KPIX-TV	SAN FRANCISCO CA	101.1	LIC	BLCDDT	-19990301KF
29	KPIX-TV	SAN FRANCISCO CA	101.1	PLN	DTVPLN	-DTVP1065
29	KPIX-TV	SAN FRANCISCO CA	101.2	CP MOD	BMPCDDT	-20080603AAG
30	KQED	SAN FRANCISCO CA	101.2	LIC	BLEDT	-20000601ADY
30	KQED	SAN FRANCISCO CA	101.2	PLN	DTVPLN	-DTVP1102
30	KQED	SAN FRANCISCO CA	101.2	CP	BPEDT	-20080314ACI
32	KFTY	SANTA ROSA CA	2.0	CP	BPCDDT	-20080313ACF
32	KFTY	SANTA ROSA CA	2.0	PLN	DTVPLN	-DTVP1173
35	KCRA-TV	SACRAMENTO CA	107.1	LIC	BLCDDT	-20040122ADR
35	KCRA-TV	SACRAMENTO CA	107.1	PLN	DTVPLN	-DTVP1280
35	KCRA-TV	SACRAMENTO CA	107.1	CP	BPCDDT	-20080208AEM
36	KICU-TV	SAN JOSE CA	145.4	PLN	DTVPLN	-DTVP1318
42	KTNC-TV	CONCORD CA	105.4	LIC	BLCT	-19830630KF
43	NEW	SACRAMENTO CA	128.3	APP	BNPEDT	-20030922AFV
43	KCSM-TV	SAN MATEO CA	101.2	LIC	BLEDT	-20030822AFZ
43	KCSM-TV	SAN MATEO CA	101.2	PLN	DTVPLN	-DTVP1529
43	KCSM-TV	SAN MATEO CA	101.2	CP	BPEDT	-20080825AAV
43	K43AF	UKIAH CA	65.9	LIC	BLTT	-19830125IL
36	KICU	SAN JOSE CA	145.4	APP	USERRECORD-01	

Proposed station is beyond the site to
nearest cell evaluation distance

#####

Analysis of Interference to Affected Station 4

Analysis of current record

Channel	Call	City/State	Application	Ref. No.
33	KDJT-CA	SALINAS CA	BPTTA	-20080804ABR

Stations Potentially Affecting This Station

Chan	Call	City/State	Dist(km)	Status	Application	Ref. No.
25	KQET	WATSONVILLE CA	0.0	PLN	DTVPLN	-DTVP0916
25	KQET	WATSONVILLE CA	0.0	APP	BFRCT	-20050811AAH
25	KQET	WATSONVILLE CA	0.0	CP	BPEDT	-20080314ACH
26	KTSF	SAN FRANCISCO CA	132.3	LIC	BLCT	-2507
29	KPIX-TV	SAN FRANCISCO CA	139.3	LIC	BLCDDT	-19990301KF
29	KPIX-TV	SAN FRANCISCO CA	139.3	PLN	DTVPLN	-DTVP1065
29	KPIX-TV	SAN FRANCISCO CA	139.3	CP MOD	BMPCDDT	-20080603AAG
30	KQED	SAN FRANCISCO CA	139.3	LIC	BLEDT	-20000601ADY
30	KQED	SAN FRANCISCO CA	139.3	PLN	DTVPLN	-DTVP1102
30	KQED	SAN FRANCISCO CA	139.3	CP	BPEDT	-20080314ACI
31	KSMS-TV	MONTEREY CA	0.0	CP	BPCDDT	-19991101AFU
31	KSMS-TV	MONTEREY CA	0.0	PLN	DTVPLN	-DTVP1131
31	KSMS-TV	MONTEREY CA	0.0	APP	BPCDDT	-20081215ACX
32	KION-TV	MONTEREY CA	26.8	LIC	BLCDDT	-20030604ACO
32	KION-TV	MONTEREY CA	26.8	PLN	DTVPLN	-DTVP1172
32	KION-TV	MONTEREY CA	26.8	APP	BPCDDT	-19991201AAR
33	KBAK-TV	BAKERSFIELD CA	298.9	LIC	BLCDDT	-20060628ABK
33	KBAK-TV	BAKERSFIELD CA	298.9	PLN	DTVPLN	-DTVP1208
33	KCSO-LP	SACRAMENTO CA	166.3	LIC	BLTTL	-20020503AAV
33	KMTP-TV	SAN FRANCISCO CA	139.3	CP	BPEDT	-20000501AGF
33	KMTP-TV	SAN FRANCISCO CA	139.3	PLN	DTVPLN	-DTVP1209
33	KTAS	SAN LUIS OBISPO CA	172.7	LIC	BLCT	-19900416KF
36	KICU-TV	SAN JOSE CA	87.5	PLN	DTVPLN	-DTVP1318
41	KKPX	SAN JOSE CA	132.4	LIC	BLCDDT	-20021108ABD
41	KKPX	SAN JOSE CA	132.4	PLN	DTVPLN	-DTVP1462
48	KSTS	SAN JOSE CA	88.8	APP	BPCT	-20001215ABL
48	KSTS	SAN JOSE CA	88.8	LIC	BLCT	-19990721KE
36	KICU	SAN JOSE CA	87.5	APP	USERRECORD-01	

Proposed station is beyond the site to
nearest cell evaluation distance

Figure 3

#####

Analysis of Interference to Affected Station 5

Analysis of current record

Channel	Call	City/State	Application Ref. No.
33	KDJT-CA	SALINAS-MONTEREY, ET CA	BLTTL -19931014JE

Stations Potentially Affecting This Station

Chan	Call	City/State	Dist(km)	Status	Application Ref. No.
25	KOVR	STOCKTON CA	135.3	CP	BPCDT -20080620ABM
25	KOVR	STOCKTON CA	135.3	PLN	DTVPLN -DTVP0915
25	KOVR	STOCKTON CA	135.3	LIC	BLCDDT -20050516ANE
25	KQET	WATSONVILLE CA	39.0	PLN	DTVPLN -DTVP0916
25	KQET	WATSONVILLE CA	38.9	APP	BFRCDT -20050811AAH
25	KQET	WATSONVILLE CA	38.9	CP	BPEDT -20080314ACH
26	KTSF	SAN FRANCISCO CA	93.4	LIC	BLCT -2507
26	KTFK-TV	STOCKTON CA	135.3	CP MOD	BMPCDDT -20080616ACI
26	KTFK-TV	STOCKTON CA	135.3	PLN	DTVPLN -DTVP0947
29	KPIX-TV	SAN FRANCISCO CA	100.4	LIC	BLCDDT -19990301KF
29	KPIX-TV	SAN FRANCISCO CA	100.4	PLN	DTVPLN -DTVP1065
29	KPIX-TV	SAN FRANCISCO CA	100.3	CP MOD	BMPCDDT -20080603AAG
30	KQED	SAN FRANCISCO CA	100.3	LIC	BLEDT -20000601ADY
30	KQED	SAN FRANCISCO CA	100.3	PLN	DTVPLN -DTVP1102
30	KQED	SAN FRANCISCO CA	100.3	CP	BPEDT -20080314ACI
31	KSMS-TV	MONTEREY CA	38.9	CP	BPCDT -19991101AFU
31	KSMS-TV	MONTEREY CA	38.9	PLN	DTVPLN -DTVP1131
31	KSMS-TV	MONTEREY CA	38.9	APP	BPCDT -20081215ACX
32	KION-TV	MONTEREY CA	57.5	LIC	BLCDDT -20030604ACO
32	KION-TV	MONTEREY CA	57.5	PLN	DTVPLN -DTVP1172
32	KION-TV	MONTEREY CA	57.5	APP	BPCDT -19991201AAR
32	KMTP-TV	SAN FRANCISCO CA	100.4	LIC	BLET -19910910KE
33	KBAK-TV	BAKERSFIELD CA	334.2	LIC	BLCDDT -20060628ABK
33	KBAK-TV	BAKERSFIELD CA	334.2	PLN	DTVPLN -DTVP1208
33	KCSO-LP	SACRAMENTO CA	150.6	LIC	BLTTL -20020503AAV
33	KMTP-TV	SAN FRANCISCO CA	100.3	CP	BPEDT -20000501AGF
33	KMTP-TV	SAN FRANCISCO CA	100.4	PLN	DTVPLN -DTVP1209
33	KTAS	SAN LUIS OBISPO CA	211.2	LIC	BLCT -19900416KF
34	KFSF-TV	VALLEJO CA	100.3	LIC	BLCDDT -20030620ABV
34	KFSF-TV	VALLEJO CA	100.3	PLN	DTVPLN -DTVP1242
34	KFSF-TV	VALLEJO CA	100.3	APP	BPCDT -20081031AAE
35	KCRA-TV	SACRAMENTO CA	136.0	LIC	BLCDDT -20040122ADR
35	KCRA-TV	SACRAMENTO CA	138.2	PLN	DTVPLN -DTVP1280
35	KCRA-TV	SACRAMENTO CA	138.2	CP	BPCDT -20080208AEM
36	KICU-TV	SAN JOSE CA	50.7	PLN	DTVPLN -DTVP1318
40	KTXL	SACRAMENTO CA	138.7	PLN	DTVPLN -DTVP1426
40	KTXL	SACRAMENTO CA	138.7	CP MOD	BMPCDDT -20080620ADJ
41	KKPX	SAN JOSE CA	93.5	LIC	BLCDDT -20021108ABD
41	KKPX	SAN JOSE CA	93.5	PLN	DTVPLN -DTVP1462
47	KTLN-TV	NOVATO CA	143.6	CP	BPCDT -19991026ABE
47	KTLN-TV	NOVATO CA	143.6	PLN	DTVPLN -DTVP1668
48	KSPX	SACRAMENTO CA	138.2	LIC	BLCDDT -20050110ABB
48	KSPX	SACRAMENTO CA	138.2	PLN	DTVPLN -DTVP1700
48	KSTS	SAN JOSE CA	52.0	APP	BPCT -20001215ABL
48	KSTS	SAN JOSE CA	52.0	LIC	BLCT -19990721KE
36	KICU	SAN JOSE CA	50.7	APP	USERRECORD-01

Proposed station is beyond the site to
nearest cell evaluation distance

#####

Analysis of Interference to Affected Station 6

Analysis of current record

Channel	Call	City/State	Application Ref. No.
33	KDJT-CA	SALINAS/MONTEREY,ETC CA	BSTA -20061120ABM

Stations Potentially Affecting This Station

Chan	Call	City/State	Dist(km)	Status	Application Ref. No.
25	KQET	WATSONVILLE CA	0.0	PLN	DTVPLN -DTVP0916
25	KQET	WATSONVILLE CA	0.0	APP	BFRCDT -20050811AAH
25	KQET	WATSONVILLE CA	0.0	CP	BPEDT -20080314ACH

Figure 3

26	KTSF	SAN FRANCISCO CA	132.3	LIC	BLCT	-2507
29	KPIX-TV	SAN FRANCISCO CA	139.3	LIC	BLCDDT	-19990301KF
29	KPIX-TV	SAN FRANCISCO CA	139.3	PLN	DTVPLN	-DTVP1065
29	KPIX-TV	SAN FRANCISCO CA	139.3	CP MOD	BMPCDT	-20080603AAG
30	KQED	SAN FRANCISCO CA	139.3	LIC	BLEDT	-20000601ADY
30	KQED	SAN FRANCISCO CA	139.3	PLN	DTVPLN	-DTVP1102
30	KQED	SAN FRANCISCO CA	139.3	CP	BPEDT	-20080314ACI
31	KSMS-TV	MONTEREY CA	0.0	CP	BPCDDT	-19991101AFU
31	KSMS-TV	MONTEREY CA	0.0	PLN	DTVPLN	-DTVP1131
31	KSMS-TV	MONTEREY CA	0.0	APP	BPCDDT	-20081215ACX
32	KION-TV	MONTEREY CA	26.8	LIC	BLCDDT	-20030604ACO
32	KION-TV	MONTEREY CA	26.8	PLN	DTVPLN	-DTVP1172
32	KION-TV	MONTEREY CA	26.8	APP	BPCDDT	-19991201AAR
33	KBAK-TV	BAKERSFIELD CA	298.9	LIC	BLCDDT	-20060628ABK
33	KBAK-TV	BAKERSFIELD CA	298.9	PLN	DTVPLN	-DTVP1208
33	KCSO-LP	SACRAMENTO CA	166.3	LIC	BLTTL	-20020503AAV
33	KMTP-TV	SAN FRANCISCO CA	139.3	CP	BPEDT	-20000501AGF
33	KMTP-TV	SAN FRANCISCO CA	139.3	PLN	DTVPLN	-DTVP1209
33	KTAS	SAN LUIS OBISPO CA	172.7	LIC	BLCT	-19900416KF
36	KICU-TV	SAN JOSE CA	87.5	PLN	DTVPLN	-DTVP1318
41	KKPX	SAN JOSE CA	132.4	LIC	BLCDDT	-20021108ABD
41	KKPX	SAN JOSE CA	132.4	PLN	DTVPLN	-DTVP1462
48	KSTS	SAN JOSE CA	88.8	APP	BPCT	-20001215ABL
48	KSTS	SAN JOSE CA	88.8	LIC	BLCT	-19990721KE
36	KICU	SAN JOSE CA	87.5	APP	USERRECORD-01	

Proposed station is beyond the site to
nearest cell evaluation distance

#####

Analysis of Interference to Affected Station 7

Analysis of current record

Channel	Call	City/State	Application Ref. No.
33	KDJT-CA	SALINAS/MONTEREY,ETC CA	BSTA -20060822AIZ

Stations Potentially Affecting This Station

Chan	Call	City/State	Dist(km)	Status	Application Ref. No.
25	KQET	WATSONVILLE CA	0.0	PLN	DTVPLN -DTVP0916
25	KQET	WATSONVILLE CA	0.0	APP	BFRCDT -20050811AAH
25	KQET	WATSONVILLE CA	0.0	CP	BPEDT -20080314ACH
26	KTSF	SAN FRANCISCO CA	132.3	LIC	BLCT -2507
29	KPIX-TV	SAN FRANCISCO CA	139.3	LIC	BLCDDT -19990301KF
29	KPIX-TV	SAN FRANCISCO CA	139.3	PLN	DTVPLN -DTVP1065
29	KPIX-TV	SAN FRANCISCO CA	139.3	CP MOD	BMPCDT -20080603AAG
30	KQED	SAN FRANCISCO CA	139.3	LIC	BLEDT -20000601ADY
30	KQED	SAN FRANCISCO CA	139.3	PLN	DTVPLN -DTVP1102
30	KQED	SAN FRANCISCO CA	139.3	CP	BPEDT -20080314ACI
31	KSMS-TV	MONTEREY CA	0.0	CP	BPCDDT -19991101AFU
31	KSMS-TV	MONTEREY CA	0.0	PLN	DTVPLN -DTVP1131
31	KSMS-TV	MONTEREY CA	0.0	APP	BPCDDT -20081215ACX
32	KION-TV	MONTEREY CA	26.8	LIC	BLCDDT -20030604ACO
32	KION-TV	MONTEREY CA	26.8	PLN	DTVPLN -DTVP1172
32	KION-TV	MONTEREY CA	26.8	APP	BPCDDT -19991201AAR
33	KBAK-TV	BAKERSFIELD CA	298.9	LIC	BLCDDT -20060628ABK
33	KBAK-TV	BAKERSFIELD CA	298.9	PLN	DTVPLN -DTVP1208
33	KCSO-LP	SACRAMENTO CA	166.3	LIC	BLTTL -20020503AAV
33	KMTP-TV	SAN FRANCISCO CA	139.3	CP	BPEDT -20000501AGF
33	KMTP-TV	SAN FRANCISCO CA	139.3	PLN	DTVPLN -DTVP1209
33	KTAS	SAN LUIS OBISPO CA	172.7	LIC	BLCT -19900416KF
36	KICU-TV	SAN JOSE CA	87.5	PLN	DTVPLN -DTVP1318
41	KKPX	SAN JOSE CA	132.4	LIC	BLCDDT -20021108ABD
41	KKPX	SAN JOSE CA	132.4	PLN	DTVPLN -DTVP1462
48	KSTS	SAN JOSE CA	88.8	APP	BPCT -20001215ABL
48	KSTS	SAN JOSE CA	88.8	LIC	BLCT -19990721KE
36	KICU	SAN JOSE CA	87.5	APP	USERRECORD-01

Proposed station is beyond the site to
nearest cell evaluation distance

#####

Analysis of Interference to Affected Station 8

Figure 3

Analysis of current record

Channel	Call	City/State	Application	Ref. No.
35	KCRA-TV	SACRAMENTO CA	BLCDT	-20040122ADR

Stations Potentially Affecting This Station

Chan	Call	City/State	Dist(km)	Status	Application	Ref. No.
34	KGPE	FRESNO CA	224.6	LIC	BLCDT	-20030702ABJ
34	KGPE	FRESNO CA	224.6	PLN	DTVPLN	-DTVP1239
34	KFSF-TV	VALLEJO CA	99.6	LIC	BLCDT	-20030620ABV
34	KFSF-TV	VALLEJO CA	99.6	PLN	DTVPLN	-DTVP1242
34	KFSF-TV	VALLEJO CA	99.6	APP	BPCDT	-20081031AAE
36	KICU-TV	SAN JOSE CA	90.3	PLN	DTVPLN	-DTVP1318
36	KFRE-TV	SANGER CA	223.6	LIC	BLCDT	-20060421AAI
36	KFRE-TV	SANGER CA	223.6	PLN	DTVPLN	-DTVP1319
36	KICU	SAN JOSE CA	90.3	APP	USERRECORD-01	

Total scenarios = 3

Result key: 1

Scenario 1 Affected station 8

Before Analysis

Results for: 35A CA SACRAMENTO BLCDT 20040122ADR LIC

HAAT 462.0 m, ATV ERP 1000.0 kW

	POPULATION	AREA (sq km)
within Noise Limited Contour	9065362	39559.8
not affected by terrain losses	5609554	34069.1
lost to NTSC IX	0	0.0
lost to additional IX by ATV	775548	881.9
lost to ATV IX only	775548	881.9
lost to all IX	775548	881.9

Potential Interfering Stations Included in above Scenario 1

34A CA VALLEJO	BLCDT	20030620ABV	LIC
36A CA SAN JOSE	DTVPLN	DTVP1318	PLN

After Analysis

Results for: 35A CA SACRAMENTO BLCDT 20040122ADR LIC

HAAT 462.0 m, ATV ERP 1000.0 kW

	POPULATION	AREA (sq km)
within Noise Limited Contour	9065362	39559.8
not affected by terrain losses	5609554	34069.1
lost to NTSC IX	0	0.0
lost to additional IX by ATV	747257	834.0
lost to ATV IX only	747257	834.0
lost to all IX	747257	834.0

Potential Interfering Stations Included in above Scenario 1

34A CA VALLEJO	BLCDT	20030620ABV	LIC
36A CA SAN JOSE	USERRECORD01		APP

Percent new IX = -0.5852%

Result key: 2

Scenario 2 Affected station 8

Before Analysis

Results for: 35A CA SACRAMENTO BLCDT 20040122ADR LIC

HAAT 462.0 m, ATV ERP 1000.0 kW

	POPULATION	AREA (sq km)
within Noise Limited Contour	9065362	39559.8
not affected by terrain losses	5609554	34069.1
lost to NTSC IX	0	0.0
lost to additional IX by ATV	775548	881.9
lost to ATV IX only	775548	881.9
lost to all IX	775548	881.9

Potential Interfering Stations Included in above Scenario 2

34A CA VALLEJO	DTVPLN	DTVP1242	PLN
36A CA SAN JOSE	DTVPLN	DTVP1318	PLN

After Analysis

Results for: 35A CA SACRAMENTO BLCDT 20040122ADR LIC

Figure 3

```

HAAT 462.0 m, ATV ERP 1000.0 kW
      POPULATION  AREA (sq km)
within Noise Limited Contour  9065362  39559.8
not affected by terrain losses 5609554  34069.1
lost to NTSC IX                0        0.0
lost to additional IX by ATV    747257   834.0
lost to ATV IX only            747257   834.0
lost to all IX                 747257   834.0

Potential Interfering Stations Included in above Scenario 2

34A CA VALLEJO      DTVPLN  DTVP1242  PLN
36A CA SAN JOSE     USERRECORD01  APP

Percent new IX = -0.5852%

Result key: 3
Scenario 3 Affected station 8
Before Analysis

Results for: 35A CA SACRAMENTO      BLCDT  20040122ADR  LIC
      HAAT 462.0 m, ATV ERP 1000.0 kW
      POPULATION  AREA (sq km)
within Noise Limited Contour  9065362  39559.8
not affected by terrain losses 5609554  34069.1
lost to NTSC IX                0        0.0
lost to additional IX by ATV    793348   969.6
lost to ATV IX only            793348   969.6
lost to all IX                 793348   969.6

Potential Interfering Stations Included in above Scenario 3

34A CA VALLEJO      BPCDT  20081031AAE  APP
36A CA SAN JOSE     DTVPLN  DTVP1318  PLN

After Analysis

Results for: 35A CA SACRAMENTO      BLCDT  20040122ADR  LIC
      HAAT 462.0 m, ATV ERP 1000.0 kW
      POPULATION  AREA (sq km)
within Noise Limited Contour  9065362  39559.8
not affected by terrain losses 5609554  34069.1
lost to NTSC IX                0        0.0
lost to additional IX by ATV    765057   925.7
lost to ATV IX only            765057   925.7
lost to all IX                 765057   925.7

Potential Interfering Stations Included in above Scenario 3

34A CA VALLEJO      BPCDT  20081031AAE  APP
36A CA SAN JOSE     USERRECORD01  APP

Percent new IX = -0.5874%

Worst case new IX -0.5852% Scenario 1

#####

Analysis of Interference to Affected Station 9

Analysis of current record
Channel  Call  City/State  Application Ref. No.
35      KCRA-TV  SACRAMENTO CA  DTVPLN  -DTVP1280

Stations Potentially Affecting This Station

Chan  Call  City/State  Dist(km) Status Application Ref. No.
34    KGPE  FRESNO CA  225.0    LIC  BLCDT  -20030702ABJ
34    KGPE  FRESNO CA  225.0    PLN  DTVPLN -DTVP1239
34    KFSF-TV VALLEJO CA  101.5    LIC  BLCDT  -20030620ABV
34    KFSF-TV VALLEJO CA  101.5    PLN  DTVPLN -DTVP1242
34    KFSF-TV VALLEJO CA  101.5    APP  BPCDT  -20081031AAE
36    KICU-TV SAN JOSE CA  92.5     PLN  DTVPLN -DTVP1318
36    KFRE-TV SANGER CA  224.0    LIC  BLCDT  -20060421AAI
36    KFRE-TV SANGER CA  224.0    PLN  DTVPLN -DTVP1319
36    KICU   SAN JOSE CA  92.5     APP  USERRECORD-01

Total scenarios = 3

```

Figure 3

Result key: 4
Scenario 1 Affected station 9
Before Analysis

Results for: 35A CA SACRAMENTO DTVPLN DTVP1280 PLN
HAAT 591.0 m, ATV ERP 1000.0 kW

	POPULATION	AREA (sq km)
within Noise Limited Contour	9710741	45895.4
not affected by terrain losses	6106488	38950.1
lost to NTSC IX	0	0.0
lost to additional IX by ATV	1082406	1066.0
lost to ATV IX only	1082406	1066.0
lost to all IX	1082406	1066.0

Potential Interfering Stations Included in above Scenario 1

34A CA VALLEJO	BLCDT	20030620ABV	LIC
36A CA SAN JOSE	DTVPLN	DTVP1318	PLN

After Analysis

Results for: 35A CA SACRAMENTO DTVPLN DTVP1280 PLN
HAAT 591.0 m, ATV ERP 1000.0 kW

	POPULATION	AREA (sq km)
within Noise Limited Contour	9710741	45895.4
not affected by terrain losses	6106488	38950.1
lost to NTSC IX	0	0.0
lost to additional IX by ATV	1037509	1017.6
lost to ATV IX only	1037509	1017.6
lost to all IX	1037509	1017.6

Potential Interfering Stations Included in above Scenario 1

34A CA VALLEJO	BLCDT	20030620ABV	LIC
36A CA SAN JOSE	USERRECORD01		APP

Percent new IX = -0.8936%

Result key: 5
Scenario 2 Affected station 9
Before Analysis

Results for: 35A CA SACRAMENTO DTVPLN DTVP1280 PLN
HAAT 591.0 m, ATV ERP 1000.0 kW

	POPULATION	AREA (sq km)
within Noise Limited Contour	9710741	45895.4
not affected by terrain losses	6106488	38950.1
lost to NTSC IX	0	0.0
lost to additional IX by ATV	1082406	1066.0
lost to ATV IX only	1082406	1066.0
lost to all IX	1082406	1066.0

Potential Interfering Stations Included in above Scenario 2

34A CA VALLEJO	DTVPLN	DTVP1242	PLN
36A CA SAN JOSE	DTVPLN	DTVP1318	PLN

After Analysis

Results for: 35A CA SACRAMENTO DTVPLN DTVP1280 PLN
HAAT 591.0 m, ATV ERP 1000.0 kW

	POPULATION	AREA (sq km)
within Noise Limited Contour	9710741	45895.4
not affected by terrain losses	6106488	38950.1
lost to NTSC IX	0	0.0
lost to additional IX by ATV	1037509	1017.6
lost to ATV IX only	1037509	1017.6
lost to all IX	1037509	1017.6

Potential Interfering Stations Included in above Scenario 2

34A CA VALLEJO	DTVPLN	DTVP1242	PLN
36A CA SAN JOSE	USERRECORD01		APP

Percent new IX = -0.8936%

Result key: 6
Scenario 3 Affected station 9

Figure 3

Before Analysis

Results for: 35A CA SACRAMENTO DTVPLN DTVP1280 PLN
 HAAT 591.0 m, ATV ERP 1000.0 kW

	POPULATION	AREA (sq km)
within Noise Limited Contour	9710741	45895.4
not affected by terrain losses	6106488	38950.1
lost to NTSC IX	0	0.0
lost to additional IX by ATV	1106184	1158.9
lost to ATV IX only	1106184	1158.9
lost to all IX	1106184	1158.9

Potential Interfering Stations Included in above Scenario 3

34A CA VALLEJO	BPCDT	20081031AAE	APP
36A CA SAN JOSE	DTVPLN	DTVPL1318	PLN

After Analysis

Results for: 35A CA SACRAMENTO DTVPLN DTVP1280 PLN
 HAAT 591.0 m, ATV ERP 1000.0 kW

	POPULATION	AREA (sq km)
within Noise Limited Contour	9710741	45895.4
not affected by terrain losses	6106488	38950.1
lost to NTSC IX	0	0.0
lost to additional IX by ATV	1075406	1118.5
lost to ATV IX only	1075406	1118.5
lost to all IX	1075406	1118.5

Potential Interfering Stations Included in above Scenario 3

34A CA VALLEJO	BPCDT	20081031AAE	APP
36A CA SAN JOSE	USERRECORD01		APP

Percent new IX = -0.6155%

Worst case new IX -0.6155% Scenario 3

#####

Analysis of Interference to Affected Station 10

Analysis of current record

Channel	Call	City/State	Application	Ref. No.
35	KCRA-TV	SACRAMENTO CA	BPCDT	-20080208AEM

Stations Potentially Affecting This Station

Chan	Call	City/State	Dist(km)	Status	Application	Ref. No.
34	KGPE	FRESNO CA	225.0	LIC	BLCDDT	-20030702ABJ
34	KGPE	FRESNO CA	225.0	PLN	DTVPLN	-DTVPL1239
34	KFSF-TV	VALLEJO CA	101.5	LIC	BLCDDT	-20030620ABV
34	KFSF-TV	VALLEJO CA	101.5	PLN	DTVPLN	-DTVPL1242
34	KFSF-TV	VALLEJO CA	101.5	APP	BPCDDT	-20081031AAE
36	KICU-TV	SAN JOSE CA	92.5	PLN	DTVPLN	-DTVPL1318
36	KFRE-TV	SANGER CA	224.0	LIC	BLCDDT	-20060421AAI
36	KFRE-TV	SANGER CA	224.0	PLN	DTVPLN	-DTVPL1319
36	KICU	SAN JOSE CA	92.5	APP	USERRECORD-01	

Total scenarios = 3

Result key: 7

Scenario 1 Affected station 10

Before Analysis

Results for: 35A CA SACRAMENTO BPCDT 20080208AEM CP
 HAAT 579.0 m, ATV ERP 1000.0 kW

	POPULATION	AREA (sq km)
within Noise Limited Contour	9653589	45233.3
not affected by terrain losses	6071463	38497.9
lost to NTSC IX	0	0.0
lost to additional IX by ATV	1087579	1082.2
lost to ATV IX only	1087579	1082.2
lost to all IX	1087579	1082.2

Potential Interfering Stations Included in above Scenario 1

Figure 3

34A CA VALLEJO	BLCDT	20030620ABV	LIC
36A CA SAN JOSE	DTVPLN	DTVP1318	PLN

After Analysis

Results for: 35A CA SACRAMENTO BPCDT 20080208AEM CP
 HAAT 579.0 m, ATV ERP 1000.0 kW

	POPULATION	AREA (sq km)
within Noise Limited Contour	9653589	45233.3
not affected by terrain losses	6071463	38497.9
lost to NTSC IX	0	0.0
lost to additional IX by ATV	1033549	1009.5
lost to ATV IX only	1033549	1009.5
lost to all IX	1033549	1009.5

Potential Interfering Stations Included in above Scenario 1

34A CA VALLEJO	BLCDT	20030620ABV	LIC
36A CA SAN JOSE	USERRECORD01		APP

Percent new IX = -1.0841%

Result key: 8
 Scenario 2 Affected station 10
 Before Analysis

Results for: 35A CA SACRAMENTO BPCDT 20080208AEM CP
 HAAT 579.0 m, ATV ERP 1000.0 kW

	POPULATION	AREA (sq km)
within Noise Limited Contour	9653589	45233.3
not affected by terrain losses	6071463	38497.9
lost to NTSC IX	0	0.0
lost to additional IX by ATV	1087579	1082.2
lost to ATV IX only	1087579	1082.2
lost to all IX	1087579	1082.2

Potential Interfering Stations Included in above Scenario 2

34A CA VALLEJO	DTVPLN	DTVP1242	PLN
36A CA SAN JOSE	DTVPLN	DTVP1318	PLN

After Analysis

Results for: 35A CA SACRAMENTO BPCDT 20080208AEM CP
 HAAT 579.0 m, ATV ERP 1000.0 kW

	POPULATION	AREA (sq km)
within Noise Limited Contour	9653589	45233.3
not affected by terrain losses	6071463	38497.9
lost to NTSC IX	0	0.0
lost to additional IX by ATV	1033549	1009.5
lost to ATV IX only	1033549	1009.5
lost to all IX	1033549	1009.5

Potential Interfering Stations Included in above Scenario 2

34A CA VALLEJO	DTVPLN	DTVP1242	PLN
36A CA SAN JOSE	USERRECORD01		APP

Percent new IX = -1.0841%

Result key: 9
 Scenario 3 Affected station 10
 Before Analysis

Results for: 35A CA SACRAMENTO BPCDT 20080208AEM CP
 HAAT 579.0 m, ATV ERP 1000.0 kW

	POPULATION	AREA (sq km)
within Noise Limited Contour	9653589	45233.3
not affected by terrain losses	6071463	38497.9
lost to NTSC IX	0	0.0
lost to additional IX by ATV	1102066	1154.9
lost to ATV IX only	1102066	1154.9
lost to all IX	1102066	1154.9

Potential Interfering Stations Included in above Scenario 3

34A CA VALLEJO	BPCDT	20081031AAE	APP
36A CA SAN JOSE	DTVPLN	DTVP1318	PLN

After Analysis

Figure 3

Results for: 35A CA SACRAMENTO BPCDT 20080208AEM CP
HAAT 579.0 m, ATV ERP 1000.0 kW

	POPULATION	AREA (sq km)
within Noise Limited Contour	9653589	45233.3
not affected by terrain losses	6071463	38497.9
lost to NTSC IX	0	0.0
lost to additional IX by ATV	1063516	1102.4
lost to ATV IX only	1063516	1102.4
lost to all IX	1063516	1102.4

Potential Interfering Stations Included in above Scenario 3

34A CA VALLEJO BPCDT 20081031AAE APP
36A CA SAN JOSE USERRECORD01 APP

Percent new IX = -0.7757%

Worst case new IX -0.7757% Scenario 3

#####

Analysis of Interference to Affected Station 11

Analysis of current record

Channel	Call	City/State	Application	Ref. No.
36	KJCN-LP	PASO ROBLES CA	BLTTL	-19870602IA

Stations Potentially Affecting This Station

Chan	Call	City/State	Dist(km)	Status	Application	Ref. No.
34	KTAS	SAN LUIS OBISPO CA	0.0	LIC	BLCDDT	-20070222AAX
34	KTAS	SAN LUIS OBISPO CA	0.0	PLN	DTVPLN	-DTVP1241
35	K35ER	SANTA MARIA CA	51.7	LIC	BLTTL	-19980902JD
35	K35ER	SANTA MARIA CA	65.8	APP	BSTA	-20071221AAD
36	KBFK-LP	BAKERSFIELD CA	173.7	LIC	BLTTL	-20040219ACE
36	KNBC	LOS ANGELES CA	268.1	CP	BPCDDT	-20050406ACJ
36	KNBC	LOS ANGELES CA	268.1	PLN	DTVPLN	-DTVP1317
36	KNBC	LOS ANGELES CA	268.1	LIC	BLCDDT	-19981123KG
36	KICU-TV	SAN JOSE CA	260.1	PLN	DTVPLN	-DTVP1318
36	KICU-TV	SAN JOSE CA	260.1	LIC	BLCT	-19881116KE
36	KFRE-TV	SANGER CA	220.0	LIC	BLCDDT	-20060421AAI
36	KFRE-TV	SANGER CA	220.0	PLN	DTVPLN	-DTVP1319
36	KICU	SAN JOSE CA	260.1	APP	USERRECORD-01	

Proposal causes no interference

#####

Analysis of Interference to Affected Station 12

Analysis of current record

Channel	Call	City/State	Application	Ref. No.
36	KFRE-TV	SANGER CA	BLCDDT	-20060421AAI

Stations Potentially Affecting This Station

Chan	Call	City/State	Dist(km)	Status	Application	Ref. No.
35	KCRA-TV	SACRAMENTO CA	223.6	LIC	BLCDDT	-20040122ADR
35	KCRA-TV	SACRAMENTO CA	224.0	PLN	DTVPLN	-DTVP1280
35	KCRA-TV	SACRAMENTO CA	224.0	CP	BPCDDT	-20080208AEM
36	KNBC	LOS ANGELES CA	340.2	CP	BPCDDT	-20050406ACJ
36	KNBC	LOS ANGELES CA	340.2	PLN	DTVPLN	-DTVP1317
36	KNBC	LOS ANGELES CA	340.2	LIC	BLCDDT	-19981123KG
36	KICU-TV	SAN JOSE CA	219.9	PLN	DTVPLN	-DTVP1318
36	KICU	SAN JOSE CA	219.9	APP	USERRECORD-01	

Total scenarios = 3

Result key: 10

Scenario 1 Affected station 12

Before Analysis

Results for: 36A CA SANGER BLCDDT 20060421AAI LIC

	POPULATION	AREA (sq km)
HAAT 607.0 m, ATV ERP 360.0 kW		

Figure 3

within Noise Limited Contour	1453694	31044.2
not affected by terrain losses	1439164	27130.1
lost to NTSC IX	0	0.0
lost to additional IX by ATV	62	160.4
lost to ATV IX only	62	160.4
lost to all IX	62	160.4

Potential Interfering Stations Included in above Scenario 1

36A CA LOS ANGELES	BPCDT	20050406ACJ	CP
36A CA SAN JOSE	DTVPLN	DTVP1318	PLN

After Analysis

Results for: 36A CA SANGER BLCDT 20060421AAI LIC

HAAT 607.0 m, ATV ERP 360.0 kW

	POPULATION	AREA (sq km)
within Noise Limited Contour	1453694	31044.2
not affected by terrain losses	1439164	27130.1
lost to NTSC IX	0	0.0
lost to additional IX by ATV	62	132.3
lost to ATV IX only	62	132.3
lost to all IX	62	132.3

Potential Interfering Stations Included in above Scenario 1

36A CA LOS ANGELES	BPCDT	20050406ACJ	CP
36A CA SAN JOSE	USERRECORD01		APP

Percent new IX = 0.0000%

Result key: 11

Scenario 2 Affected station 12

Before Analysis

Results for: 36A CA SANGER BLCDT 20060421AAI LIC

HAAT 607.0 m, ATV ERP 360.0 kW

	POPULATION	AREA (sq km)
within Noise Limited Contour	1453694	31044.2
not affected by terrain losses	1439164	27130.1
lost to NTSC IX	0	0.0
lost to additional IX by ATV	62	160.4
lost to ATV IX only	62	160.4
lost to all IX	62	160.4

Potential Interfering Stations Included in above Scenario 2

36A CA LOS ANGELES	DTVPLN	DTVP1317	PLN
36A CA SAN JOSE	DTVPLN	DTVP1318	PLN

After Analysis

Results for: 36A CA SANGER BLCDT 20060421AAI LIC

HAAT 607.0 m, ATV ERP 360.0 kW

	POPULATION	AREA (sq km)
within Noise Limited Contour	1453694	31044.2
not affected by terrain losses	1439164	27130.1
lost to NTSC IX	0	0.0
lost to additional IX by ATV	62	132.3
lost to ATV IX only	62	132.3
lost to all IX	62	132.3

Potential Interfering Stations Included in above Scenario 2

36A CA LOS ANGELES	DTVPLN	DTVP1317	PLN
36A CA SAN JOSE	USERRECORD01		APP

Percent new IX = 0.0000%

Result key: 12

Scenario 3 Affected station 12

Before Analysis

Results for: 36A CA SANGER BLCDT 20060421AAI LIC

HAAT 607.0 m, ATV ERP 360.0 kW

	POPULATION	AREA (sq km)
within Noise Limited Contour	1453694	31044.2
not affected by terrain losses	1439164	27130.1
lost to NTSC IX	0	0.0
lost to additional IX by ATV	62	160.4

Figure 3

```

lost to ATV IX only          62      160.4
lost to all IX               62      160.4

Potential Interfering Stations Included in above Scenario      3

36A CA LOS ANGELES          BLCDT      19981123KG      LIC
36A CA SAN JOSE             DTVPLN      DTVP1318      PLN

After Analysis

Results for: 36A CA SANGER          BLCDT      20060421AAI      LIC
HAAT  607.0 m, ATV ERP  360.0 kW
      POPULATION      AREA (sq km)
within Noise Limited Contour      1453694      31044.2
not affected by terrain losses      1439164      27130.1
lost to NTSC IX                    0          0.0
lost to additional IX by ATV        62         132.3
lost to ATV IX only                 62         132.3
lost to all IX                     62         132.3

Potential Interfering Stations Included in above Scenario      3

36A CA LOS ANGELES          BLCDT      19981123KG      LIC
36A CA SAN JOSE             USERRECORD01      APP

Percent new IX =      0.0000%

Worst case new IX      0.0000% Scenario      1

#####

Analysis of Interference to Affected Station  13

Analysis of current record
Channel      Call      City/State      Application Ref. No.
36      KFRE-TV      SANGER CA      DTVPLN      -DTVPL1319

Stations Potentially Affecting This Station

Chan      Call      City/State      Dist(km) Status      Application Ref. No.
35      KCRA-TV      SACRAMENTO CA      223.6      LIC      BLCDT      -20040122ADR
35      KCRA-TV      SACRAMENTO CA      224.0      PLN      DTVPLN      -DTVPL1280
35      KCRA-TV      SACRAMENTO CA      224.0      CP      BPCDT      -20080208AEM
36      KNBC      LOS ANGELES CA      340.2      CP      BPCDT      -20050406ACJ
36      KNBC      LOS ANGELES CA      340.2      PLN      DTVPLN      -DTVPL1317
36      KNBC      LOS ANGELES CA      340.2      LIC      BLCDT      -19981123KG
36      KICU-TV      SAN JOSE CA      219.9      PLN      DTVPLN      -DTVPL1318
36      KICU      SAN JOSE CA      219.9      APP      USERRECORD-01

Total scenarios =      3

Result key:      13
Scenario      1      Affected station      13
Before Analysis

Results for: 36A CA SANGER          DTVPLN      DTVPL1319      PLN
HAAT  600.0 m, ATV ERP  372.0 kW
      POPULATION      AREA (sq km)
within Noise Limited Contour      1454605      31128.5
not affected by terrain losses      1440768      27230.4
lost to NTSC IX                    0          0.0
lost to additional IX by ATV        62         152.4
lost to ATV IX only                 62         152.4
lost to all IX                     62         152.4

Potential Interfering Stations Included in above Scenario      1

36A CA LOS ANGELES          BPCDT      20050406ACJ      CP
36A CA SAN JOSE             DTVPLN      DTVPL1318      PLN

After Analysis

Results for: 36A CA SANGER          DTVPLN      DTVPL1319      PLN
HAAT  600.0 m, ATV ERP  372.0 kW
      POPULATION      AREA (sq km)
within Noise Limited Contour      1454605      31128.5
not affected by terrain losses      1440768      27230.4

```

Figure 3

lost to NTSC IX	0	0.0
lost to additional IX by ATV	60	120.3
lost to ATV IX only	60	120.3
lost to all IX	60	120.3

Potential Interfering Stations Included in above Scenario 1

36A CA LOS ANGELES	BPCDT	20050406ACJ	CP
36A CA SAN JOSE	USERRECORD01		APP

Percent new IX = -0.0001%

Result key: 14

Scenario 2 Affected station 13

Before Analysis

Results for: 36A CA SANGER DTVPLN DTVP1319 PLN

HAAT 600.0 m, ATV ERP 372.0 kW		
	POPULATION	AREA (sq km)
within Noise Limited Contour	1454605	31128.5
not affected by terrain losses	1440768	27230.4
lost to NTSC IX	0	0.0
lost to additional IX by ATV	62	152.4
lost to ATV IX only	62	152.4
lost to all IX	62	152.4

Potential Interfering Stations Included in above Scenario 2

36A CA LOS ANGELES	DTVPLN	DTVP1317	PLN
36A CA SAN JOSE	DTVPLN	DTVP1318	PLN

After Analysis

Results for: 36A CA SANGER DTVPLN DTVP1319 PLN

HAAT 600.0 m, ATV ERP 372.0 kW		
	POPULATION	AREA (sq km)
within Noise Limited Contour	1454605	31128.5
not affected by terrain losses	1440768	27230.4
lost to NTSC IX	0	0.0
lost to additional IX by ATV	60	120.3
lost to ATV IX only	60	120.3
lost to all IX	60	120.3

Potential Interfering Stations Included in above Scenario 2

36A CA LOS ANGELES	DTVPLN	DTVP1317	PLN
36A CA SAN JOSE	USERRECORD01		APP

Percent new IX = -0.0001%

Result key: 15

Scenario 3 Affected station 13

Before Analysis

Results for: 36A CA SANGER DTVPLN DTVP1319 PLN

HAAT 600.0 m, ATV ERP 372.0 kW		
	POPULATION	AREA (sq km)
within Noise Limited Contour	1454605	31128.5
not affected by terrain losses	1440768	27230.4
lost to NTSC IX	0	0.0
lost to additional IX by ATV	62	152.4
lost to ATV IX only	62	152.4
lost to all IX	62	152.4

Potential Interfering Stations Included in above Scenario 3

36A CA LOS ANGELES	BLCDT	19981123KG	LIC
36A CA SAN JOSE	DTVPLN	DTVP1318	PLN

After Analysis

Results for: 36A CA SANGER DTVPLN DTVP1319 PLN

HAAT 600.0 m, ATV ERP 372.0 kW		
	POPULATION	AREA (sq km)
within Noise Limited Contour	1454605	31128.5
not affected by terrain losses	1440768	27230.4
lost to NTSC IX	0	0.0
lost to additional IX by ATV	60	120.3
lost to ATV IX only	60	120.3
lost to all IX	60	120.3

Figure 3

```

Potential Interfering Stations Included in above Scenario      3

36A CA LOS ANGELES          BLCDT      19981123KG    LIC
36A CA SAN JOSE             USERRECORD01        APP

Percent new IX =      -0.0001%

Worst case new IX      -0.0001% Scenario      1

#####

Analysis of Interference to Affected Station  14

Analysis of current record
Channel      Call      City/State      Application Ref. No.
  36      KICU      SAN JOSE CA      USERRECORD-01

Stations Potentially Affecting This Station

Chan      Call      City/State      Dist(km) Status Application Ref. No.
  35      KCRA-TV      SACRAMENTO CA      90.3    LIC      BLCDT      -20040122ADR
  35      KCRA-TV      SACRAMENTO CA      92.5    PLN      DTVPLN     -DTVP1280
  35      KCRA-TV      SACRAMENTO CA      92.5    CP       BPCDT      -20080208AEM
  36      KFRE-TV      SANGER CA      219.9   LIC      BLCDT      -20060421AAI
  36      KFRE-TV      SANGER CA      219.9   PLN      DTVPLN     -DTVP1319

Total scenarios =      6

Result key:      16
Scenario      1 Affected station      14
Before Analysis

Results for: 36A CA SAN JOSE      USERRECORD01      APP
HAAT  646.0 m, ATV ERP  500.0 kW
      POPULATION      AREA (sq km)
within Noise Limited Contour      7601094      36514.1
not affected by terrain losses      6681769      27543.0
lost to NTSC IX      0      0.0
lost to additional IX by ATV      330670      2526.3
lost to ATV IX only      330670      2526.3
lost to all IX      330670      2526.3

Potential Interfering Stations Included in above Scenario      1

35A CA SACRAMENTO          BLCDT      20040122ADR    LIC
36A CA SANGER              BLCDT      20060421AAI    LIC

Result key:      17
Scenario      2 Affected station      14
Before Analysis

Results for: 36A CA SAN JOSE      USERRECORD01      APP
HAAT  646.0 m, ATV ERP  500.0 kW
      POPULATION      AREA (sq km)
within Noise Limited Contour      7601094      36514.1
not affected by terrain losses      6681769      27543.0
lost to NTSC IX      0      0.0
lost to additional IX by ATV      337430      2554.5
lost to ATV IX only      337430      2554.5
lost to all IX      337430      2554.5

Potential Interfering Stations Included in above Scenario      2

35A CA SACRAMENTO          BLCDT      20040122ADR    LIC
36A CA SANGER              DTVPLN     DTVP1319      PLN

Result key:      18
Scenario      3 Affected station      14
Before Analysis

Results for: 36A CA SAN JOSE      USERRECORD01      APP
HAAT  646.0 m, ATV ERP  500.0 kW
      POPULATION      AREA (sq km)
within Noise Limited Contour      7601094      36514.1
not affected by terrain losses      6681769      27543.0
lost to NTSC IX      0      0.0

```

Figure 3

lost to additional IX by ATV	334248	2538.4
lost to ATV IX only	334248	2538.4
lost to all IX	334248	2538.4

Potential Interfering Stations Included in above Scenario 3

35A CA SACRAMENTO	DTVPLN	DTVP1280	PLN
36A CA SANGER	BLCDT	20060421AAI	LIC

Result key: 19
Scenario 4 Affected station 14
Before Analysis

Results for: 36A CA SAN JOSE USERRECORD01 APP
HAAT 646.0 m, ATV ERP 500.0 kW

	POPULATION	AREA (sq km)
within Noise Limited Contour	7601094	36514.1
not affected by terrain losses	6681769	27543.0
lost to NTSC IX	0	0.0
lost to additional IX by ATV	341008	2566.6
lost to ATV IX only	341008	2566.6
lost to all IX	341008	2566.6

Potential Interfering Stations Included in above Scenario 4

35A CA SACRAMENTO	DTVPLN	DTVP1280	PLN
36A CA SANGER	DTVPLN	DTVP1319	PLN

Result key: 20
Scenario 5 Affected station 14
Before Analysis

Results for: 36A CA SAN JOSE USERRECORD01 APP
HAAT 646.0 m, ATV ERP 500.0 kW

	POPULATION	AREA (sq km)
within Noise Limited Contour	7601094	36514.1
not affected by terrain losses	6681769	27543.0
lost to NTSC IX	0	0.0
lost to additional IX by ATV	333968	2534.4
lost to ATV IX only	333968	2534.4
lost to all IX	333968	2534.4

Potential Interfering Stations Included in above Scenario 5

35A CA SACRAMENTO	BPCDT	20080208AEM	CP
36A CA SANGER	BLCDT	20060421AAI	LIC

Result key: 21
Scenario 6 Affected station 14
Before Analysis

Results for: 36A CA SAN JOSE USERRECORD01 APP
HAAT 646.0 m, ATV ERP 500.0 kW

	POPULATION	AREA (sq km)
within Noise Limited Contour	7601094	36514.1
not affected by terrain losses	6681769	27543.0
lost to NTSC IX	0	0.0
lost to additional IX by ATV	340728	2562.6
lost to ATV IX only	340728	2562.6
lost to all IX	340728	2562.6

Potential Interfering Stations Included in above Scenario 6

35A CA SACRAMENTO	BPCDT	20080208AEM	CP
36A CA SANGER	DTVPLN	DTVP1319	PLN

#####

FINISHED FINISHED FINISHED FINISHED FINISHED FINISHED

APPENDIX

TRANSMITTING ANTENNA HORIZONTAL & VERTICAL PLANE PATTERNS