

**W249CC, TOCCOA, GA: MINOR MODIFICATION OF CONSTRUCTION PERMIT**  
**Proposed 100 dBu F(50,10) - contains no population by remaining above buildings**



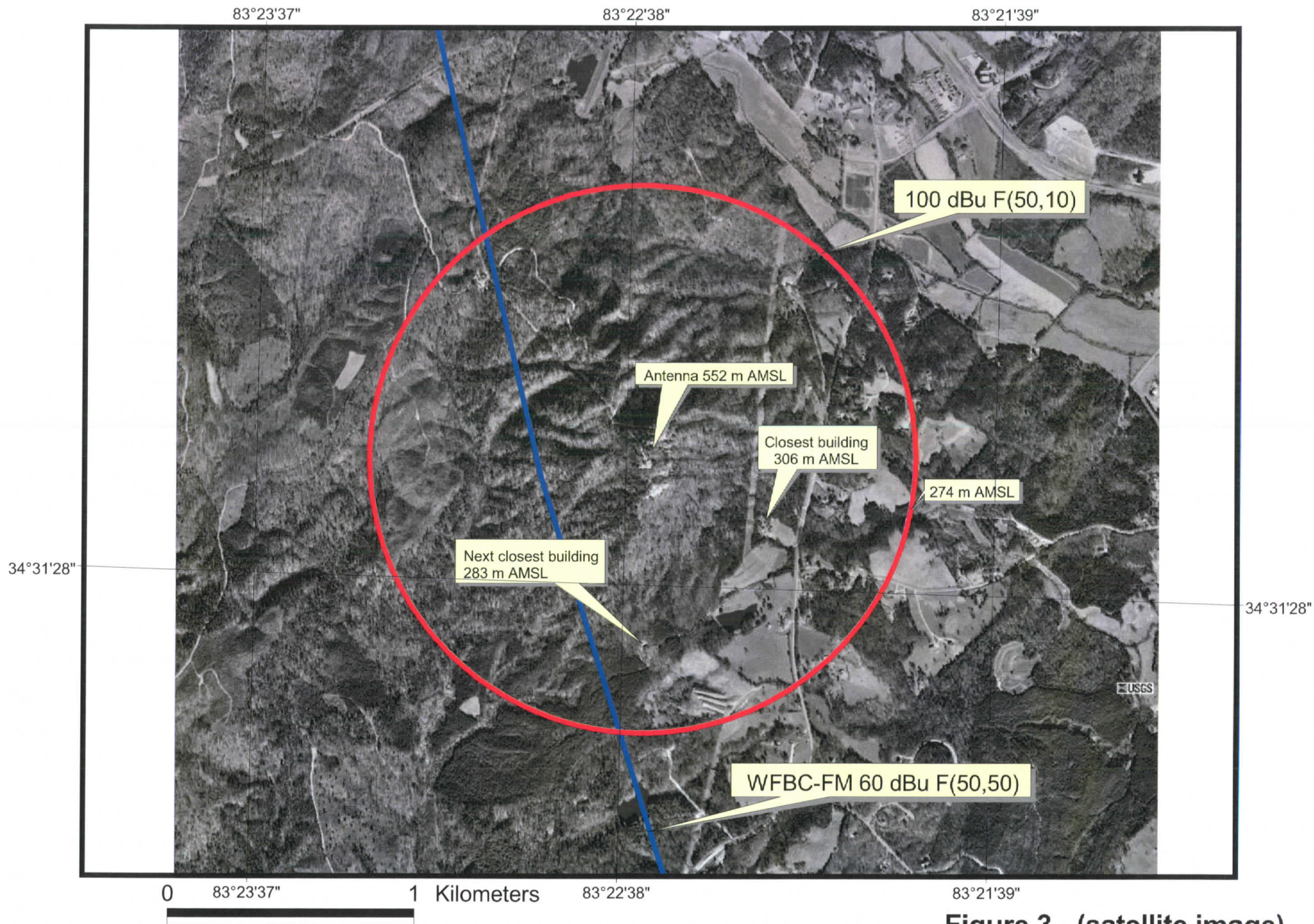


Figure 3 - (satellite image)

**W249CC, TOCCOA, GA: MINOR MODIFICATION OF CONSTRUCTION PERMIT**  
**Proposed 100 dBu F(50,10) - contains no population by remaining above buildings**

Antenna Mfg.: Shively Labs

Antenna Type: 6812-2

Station: none

Frequency: 93.1

Channel #: 226

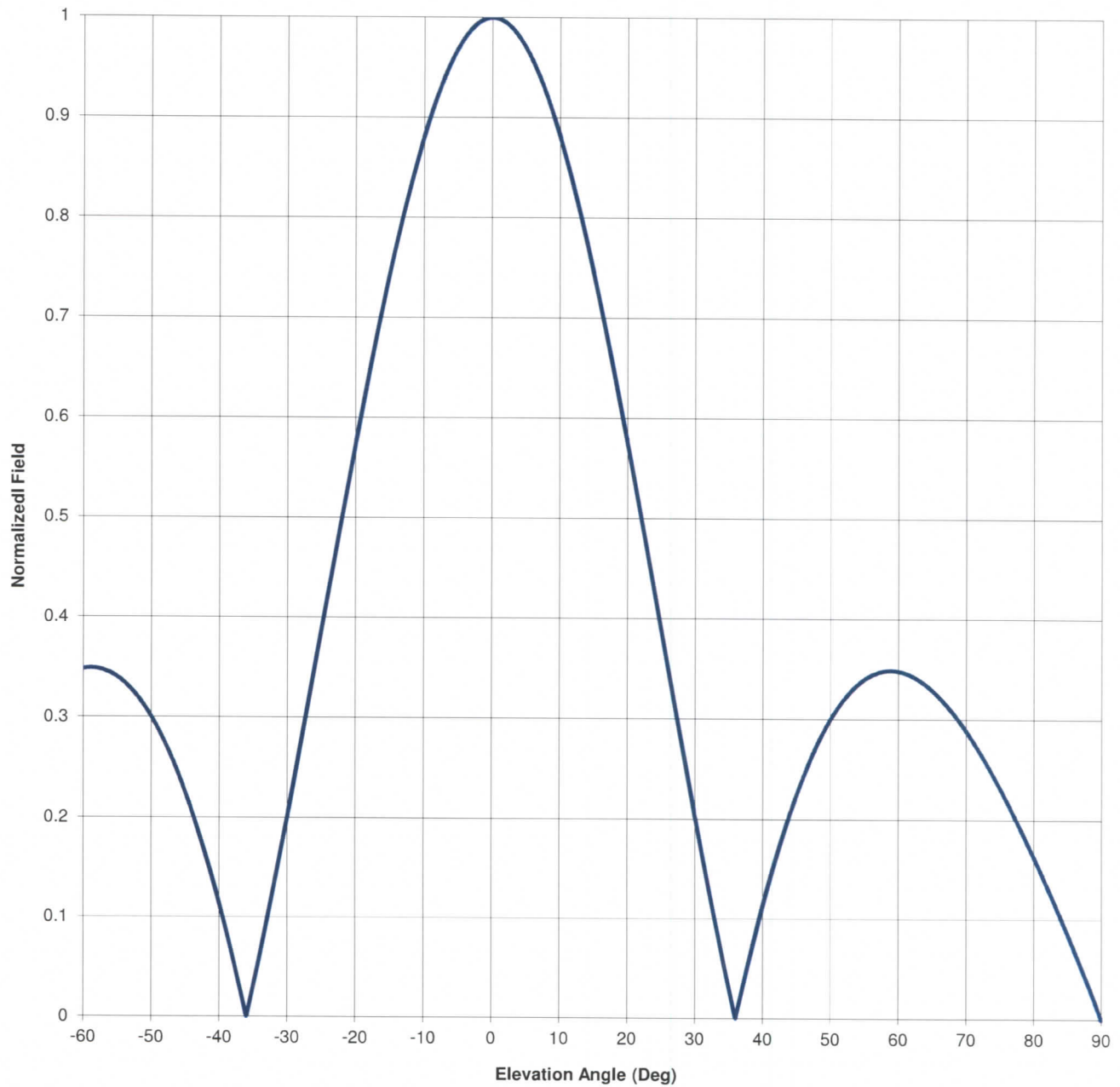
Figure: 3

Date: 11/23/2011

Beam Tilt 0

Gain (Max) 1.005 0.022 dB

Gain (Horizon) 1.005 0.022 dB





Antenna Mfg.: Shively Labs  
Antenna Type: 6812-2

Date: 11/23/2011

Station: none  
Frequency: 93.1  
Channel #: 226

Beam Tilt 0  
Gain (Max) 1.005  
Gain (Horizon) 1.005

0.022 dB  
0.022 dB

Figure: 3

| Angle of Depression (Deg) | Relative Field | Angle of Depression (Deg) | Relative Field | Angle of Depression (Deg) | Relative Field | Angle of Depression (Deg) | Relative Field |
|---------------------------|----------------|---------------------------|----------------|---------------------------|----------------|---------------------------|----------------|
| -90                       | 0.000          | -44                       | 0.206          | 0                         | 1.000          | 46                        | 0.243          |
| -89                       | 0.018          | -43                       | 0.185          | 1                         | 0.999          | 47                        | 0.260          |
| -88                       | 0.036          | -42                       | 0.163          | 2                         | 0.995          | 48                        | 0.275          |
| -87                       | 0.052          | -41                       | 0.139          | 3                         | 0.989          | 49                        | 0.288          |
| -86                       | 0.069          | -40                       | 0.114          | 4                         | 0.980          | 50                        | 0.300          |
| -85                       | 0.085          | -39                       | 0.087          | 5                         | 0.969          | 51                        | 0.311          |
| -84                       | 0.101          | -38                       | 0.060          | 6                         | 0.956          | 52                        | 0.320          |
| -83                       | 0.117          | -37                       | 0.031          | 7                         | 0.941          | 53                        | 0.328          |
| -82                       | 0.133          | -36                       | 0.000          | 8                         | 0.923          | 54                        | 0.335          |
| -81                       | 0.148          | -35                       | 0.031          | 9                         | 0.903          | 55                        | 0.340          |
| -80                       | 0.163          | -34                       | 0.063          | 10                        | 0.881          | 56                        | 0.344          |
| -79                       | 0.177          | -33                       | 0.097          | 11                        | 0.857          | 57                        | 0.347          |
| -78                       | 0.191          | -32                       | 0.131          | 12                        | 0.832          | 58                        | 0.349          |
| -77                       | 0.205          | -31                       | 0.166          | 13                        | 0.804          | 59                        | 0.349          |
| -76                       | 0.219          | -30                       | 0.202          | 14                        | 0.775          | 60                        | 0.348          |
| -75                       | 0.232          | -29                       | 0.239          | 15                        | 0.745          | 61                        | 0.346          |
| -74                       | 0.244          | -28                       | 0.276          | 16                        | 0.713          | 62                        | 0.344          |
| -73                       | 0.256          | -27                       | 0.313          | 17                        | 0.680          | 63                        | 0.340          |
| -72                       | 0.267          | -26                       | 0.351          | 18                        | 0.646          | 64                        | 0.335          |
| -71                       | 0.278          | -25                       | 0.388          | 19                        | 0.611          | 65                        | 0.329          |
| -70                       | 0.289          | -24                       | 0.426          | 20                        | 0.575          | 66                        | 0.323          |
| -69                       | 0.298          | -23                       | 0.464          | 21                        | 0.538          | 67                        | 0.315          |
| -68                       | 0.307          | -22                       | 0.501          | 22                        | 0.501          | 68                        | 0.307          |
| -67                       | 0.315          | -21                       | 0.538          | 23                        | 0.464          | 69                        | 0.298          |
| -66                       | 0.323          | -20                       | 0.575          | 24                        | 0.426          | 70                        | 0.289          |
| -65                       | 0.329          | -19                       | 0.611          | 25                        | 0.388          | 71                        | 0.278          |
| -64                       | 0.335          | -18                       | 0.646          | 26                        | 0.351          | 72                        | 0.267          |
| -63                       | 0.340          | -17                       | 0.680          | 27                        | 0.313          | 73                        | 0.256          |
| -62                       | 0.344          | -16                       | 0.713          | 28                        | 0.276          | 74                        | 0.244          |
| -61                       | 0.346          | -15                       | 0.745          | 29                        | 0.239          | 75                        | 0.232          |
| -60                       | 0.348          | -14                       | 0.775          | 30                        | 0.202          | 76                        | 0.219          |
| -59                       | 0.349          | -13                       | 0.804          | 31                        | 0.166          | 77                        | 0.205          |
| -58                       | 0.349          | -12                       | 0.832          | 32                        | 0.131          | 78                        | 0.191          |
| -57                       | 0.347          | -11                       | 0.857          | 33                        | 0.097          | 79                        | 0.177          |
| -56                       | 0.344          | -10                       | 0.881          | 34                        | 0.063          | 80                        | 0.163          |
| -55                       | 0.340          | -9                        | 0.903          | 35                        | 0.031          | 81                        | 0.148          |
| -54                       | 0.335          | -8                        | 0.923          | 36                        | 0.000          | 82                        | 0.133          |
| -53                       | 0.328          | -7                        | 0.941          | 37                        | 0.031          | 83                        | 0.117          |
| -52                       | 0.320          | -6                        | 0.956          | 38                        | 0.060          | 84                        | 0.101          |
| -51                       | 0.311          | -5                        | 0.969          | 39                        | 0.087          | 85                        | 0.085          |
| -50                       | 0.300          | -4                        | 0.980          | 40                        | 0.114          | 86                        | 0.069          |
| -49                       | 0.288          | -3                        | 0.989          | 41                        | 0.139          | 87                        | 0.052          |
| -48                       | 0.275          | -2                        | 0.995          | 42                        | 0.163          | 88                        | 0.036          |
| -47                       | 0.260          | -1                        | 0.999          | 43                        | 0.185          | 89                        | 0.018          |
| -46                       | 0.243          | 0                         | 1.000          | 44                        | 0.206          | 90                        | 0.000          |
| -45                       | 0.225          |                           |                | 45                        | 0.225          |                           |                |

