

## **Page #1, Waiver Request of Section 74.1204**

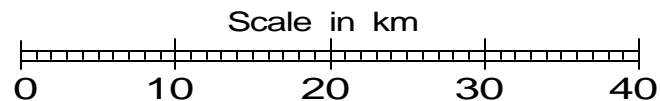
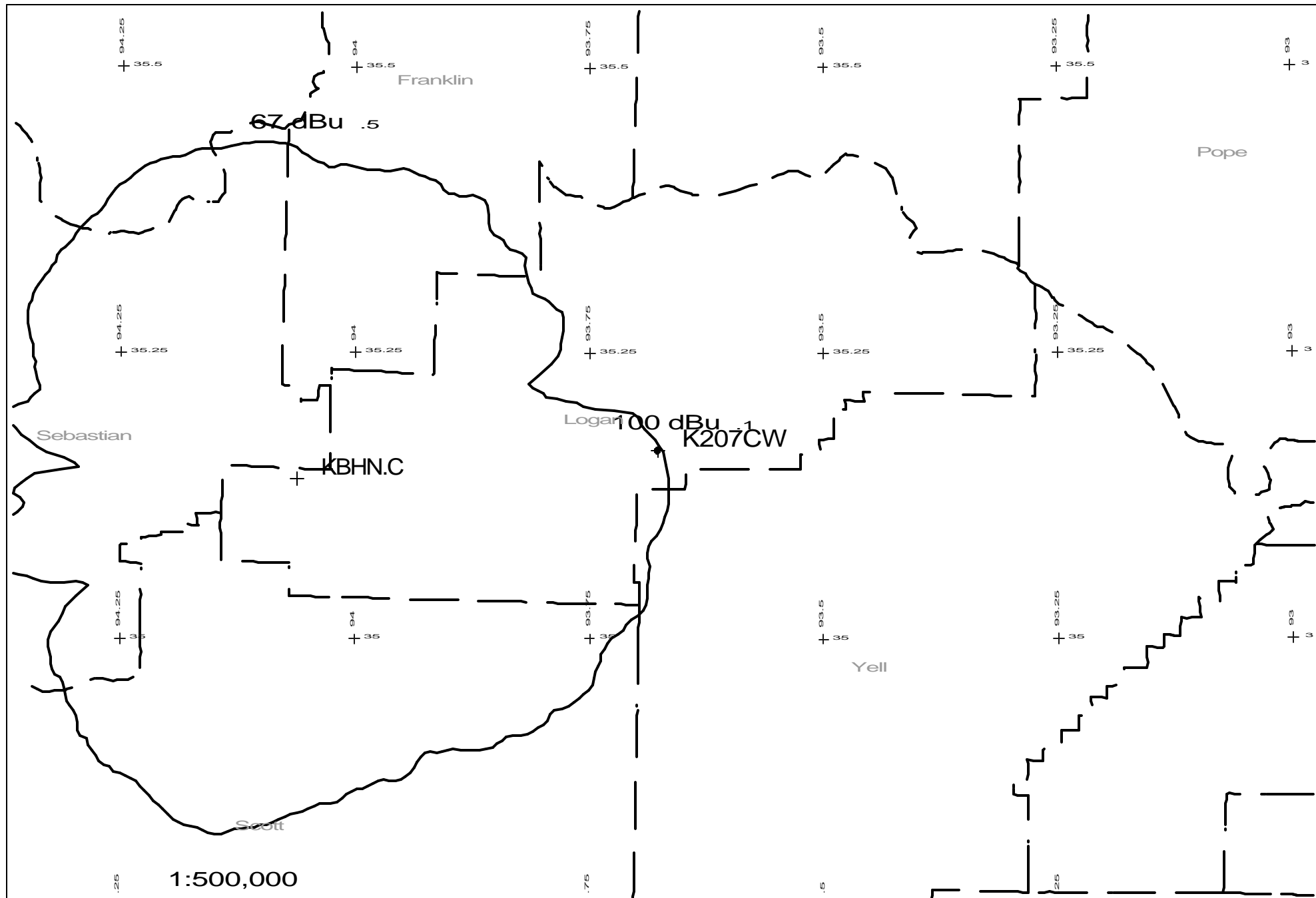
K207CW, Paris, AR 10 Watts ERP

Calvary Chapel of Twin Falls, Inc. 3/4

The proposed site is contained entirely inside the service contour of second-adjacent station KBHN, Booneville, AR

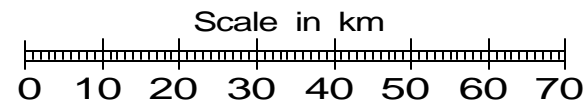
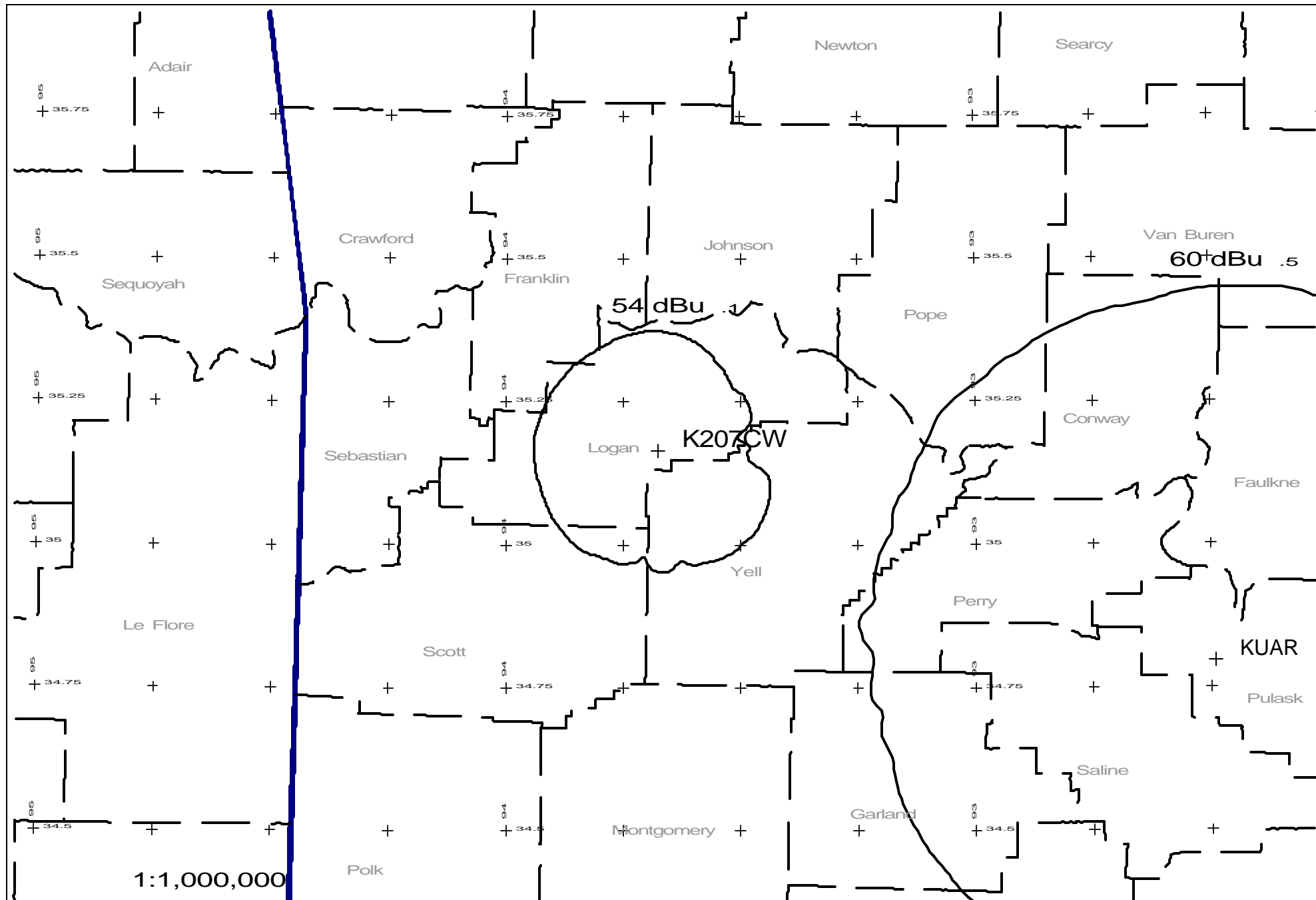
### **KBHN**

The proposed site is contained entirely inside the service contour of second-adjacent Station KBHN.CP, Channel 209, Class C1, 59 kW, Booneville, AR . As shown by the map on **page #2** of this waiver request, the level of the second-adjacent station KBHN arriving protected F(50,50) signal at the proposed transmitter site is in 67-dBu Using the Undesired-to-Desired method for calculating proposed interference (the basis of the FCC current contour overlap regulations and an acceptable method for the purposes of determining lack of interference for an FM Translator), the proposed interfering contour with respect to KBHN is 107-dBu (free-space contour method employed). This means that the 107-dBu interfering signal would, in the worst case at the maximum radial, extend 101 meters, or .101 km, from the base of the tower. The cable on this tower will not be changed and will remain at 89 meters AGL. The interference contour, once it hits the ground will be very slight and since this tower is located on Magazine Mt. and there is no population around the tower, no interference is anticipated. The 2.5 Min section of the Topo Map Blue Mountain, AR is included with a .1 km circle is drawn around the tower site. The only buildings located near the site are associated with equipment on the towers. Since no population inhabits this interference area, Calvary Chapel of Twin Falls, Inc. respectfully requests a waiver of the FM translator contour overlap regulations with respect to second-adjacent channel station KBHN.



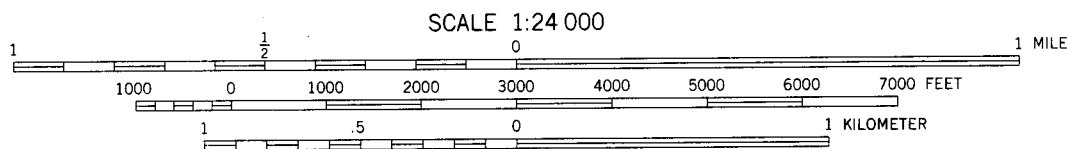
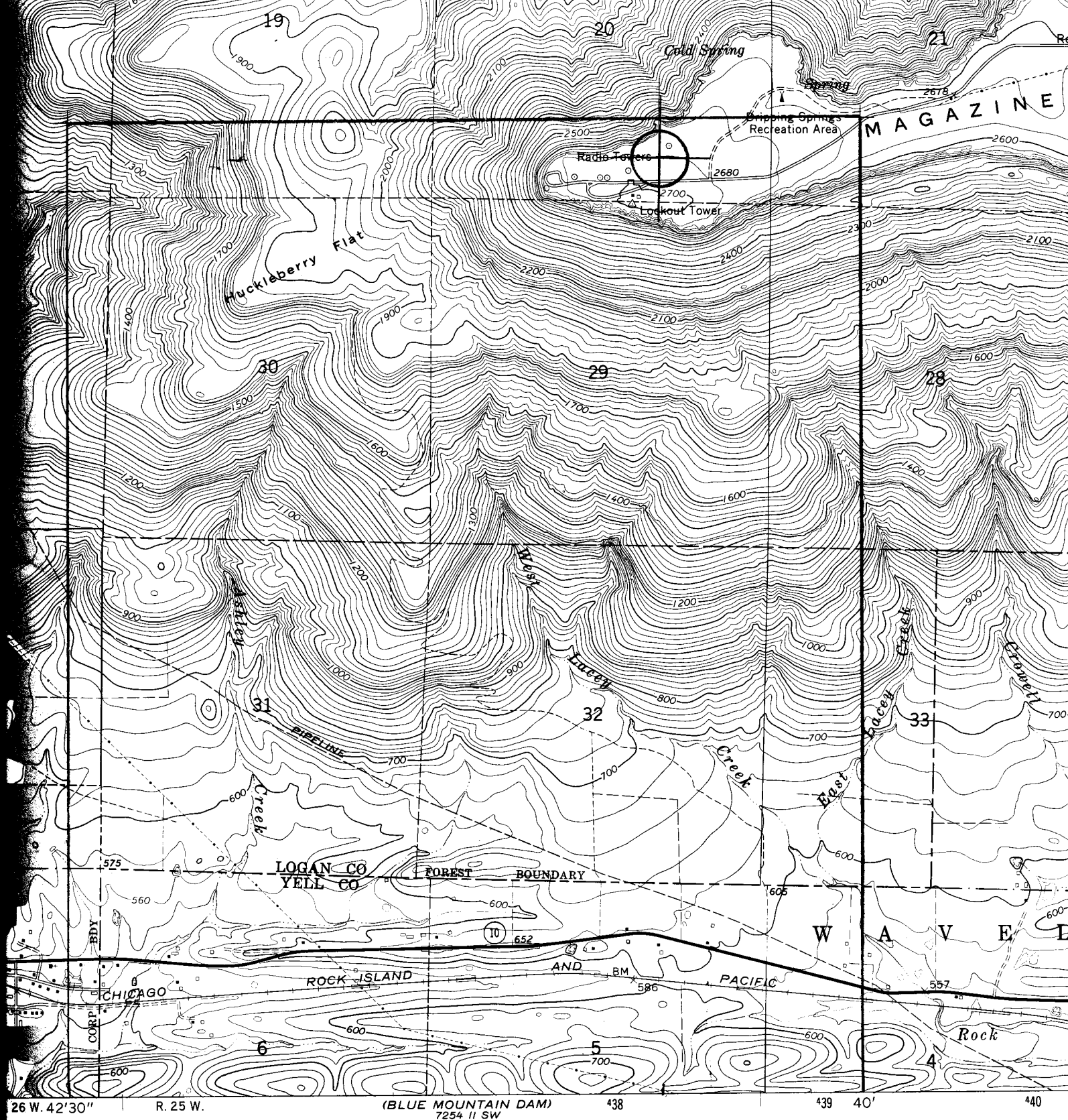
K207CW 207D .01kW 912M AMSL  
N. Lat. 35 09 54 W. Lng. 93 40 38

K207CW  
CCTF - 03/04



K207CW 207D .01kW 912M AMSL  
N. Lat. 35 09 54 W. Lng. 93 40 38

K207CW  
CCTF - 03/04



CONTOUR INTERVAL 20 FEET  
NATIONAL GEODETIC VERTICAL DATUM OF 1929

THIS MAP COMPLIES WITH NATIONAL MAP ACCURACY STANDARDS  
FOR SALE BY U. S. GEOLOGICAL SURVEY, DENVER, COLORADO 80225, OR RESTON, VIRGINIA 22092  
AND ARKANSAS GEOLOGICAL COMMISSION, LITTLE ROCK, ARKANSAS 72204  
A FOLDER DESCRIBING TOPOGRAPHIC MAPS AND SYMBOLS IS AVAILABLE ON REQUEST

