

University of Massachusetts Boston
New FM Broadcast Facility Proposal for Gloucester, Massachusetts

Exhibit 21 for Section VII

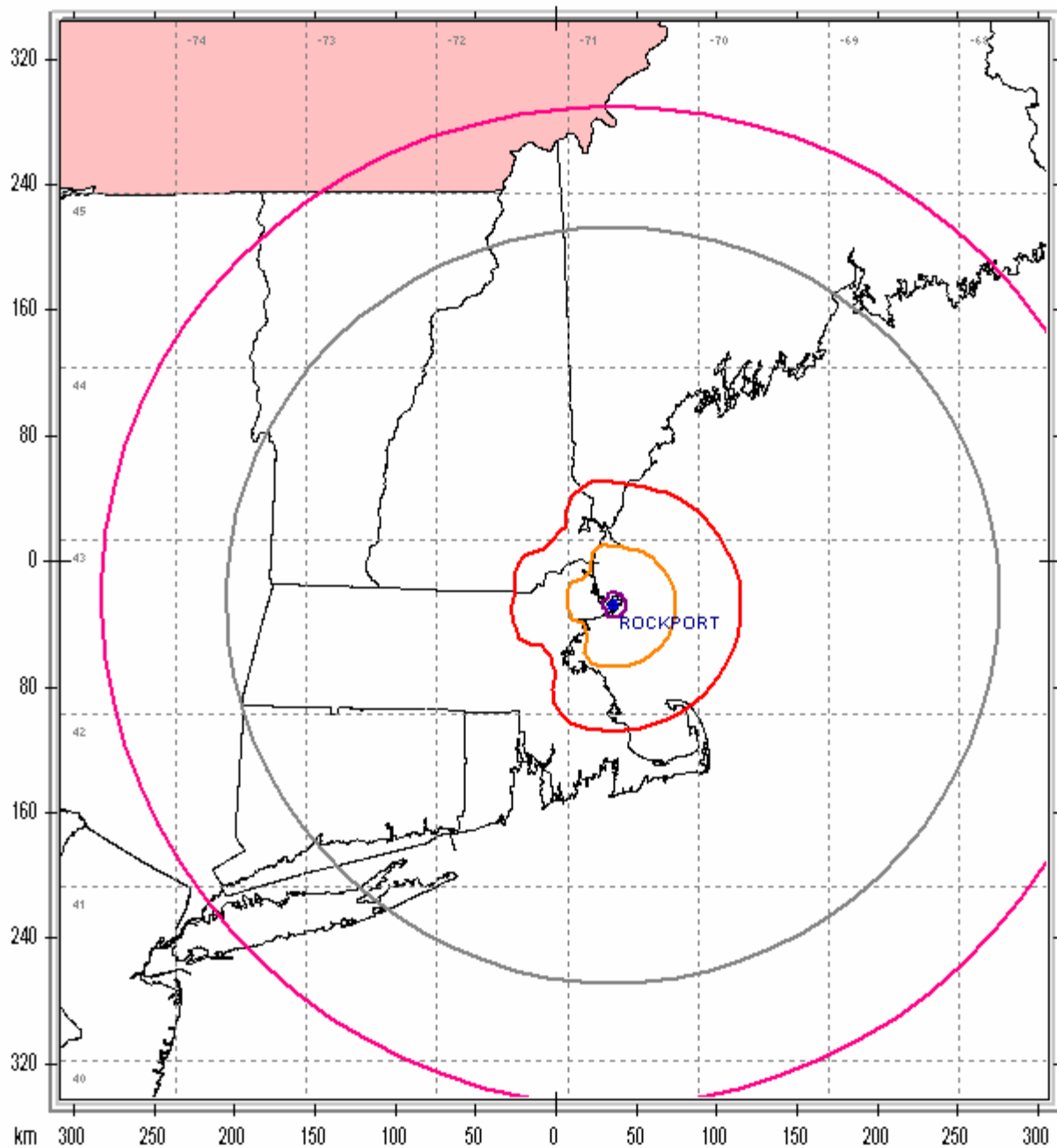
International Borders / Protection of Canadian/Mexican Stations

The proposed facility is within 320km of the US/Canada border (red circular contour on accompanying plot), and thus within the range where US facilities must protect Canadian/Mexican facilities. The proposed facility is not within 242 km of the border (gray circular contour on plot)

There are no relevant Canadian facilities to this application:

- Pursuant to 73.207 (b)(2), the “worst-case scenario” of a Class A protecting a Class C station requires 242km of distance; the proposed facility is more than 242km from the border and thus, inherently meets the minimum distance separation.
- The nearest proposed facility’s interfering contour is well distant from the border; and thus well distant from any possible protected contours of Canadian stations.

Gloucester 91.5 / Ch 218 - US/Canada Protection



Interfering Contours: Red=34dBu, Orange=48dBu, Purple=74dBu, Blue=94dBu

Protections: Red = Co-channel, Orange = First Adjacent, Purple = Second Adjacent, Blue = Third Adjacent
 Facility is more than 242km from the border.

State Borders Lat/Lon Grid

Map Scale: 1:4343776 1 cm = 43.44 km V/H Size: 687.12 x 614.54 km

Pink = 320km Radius / Grey = 242km Radius